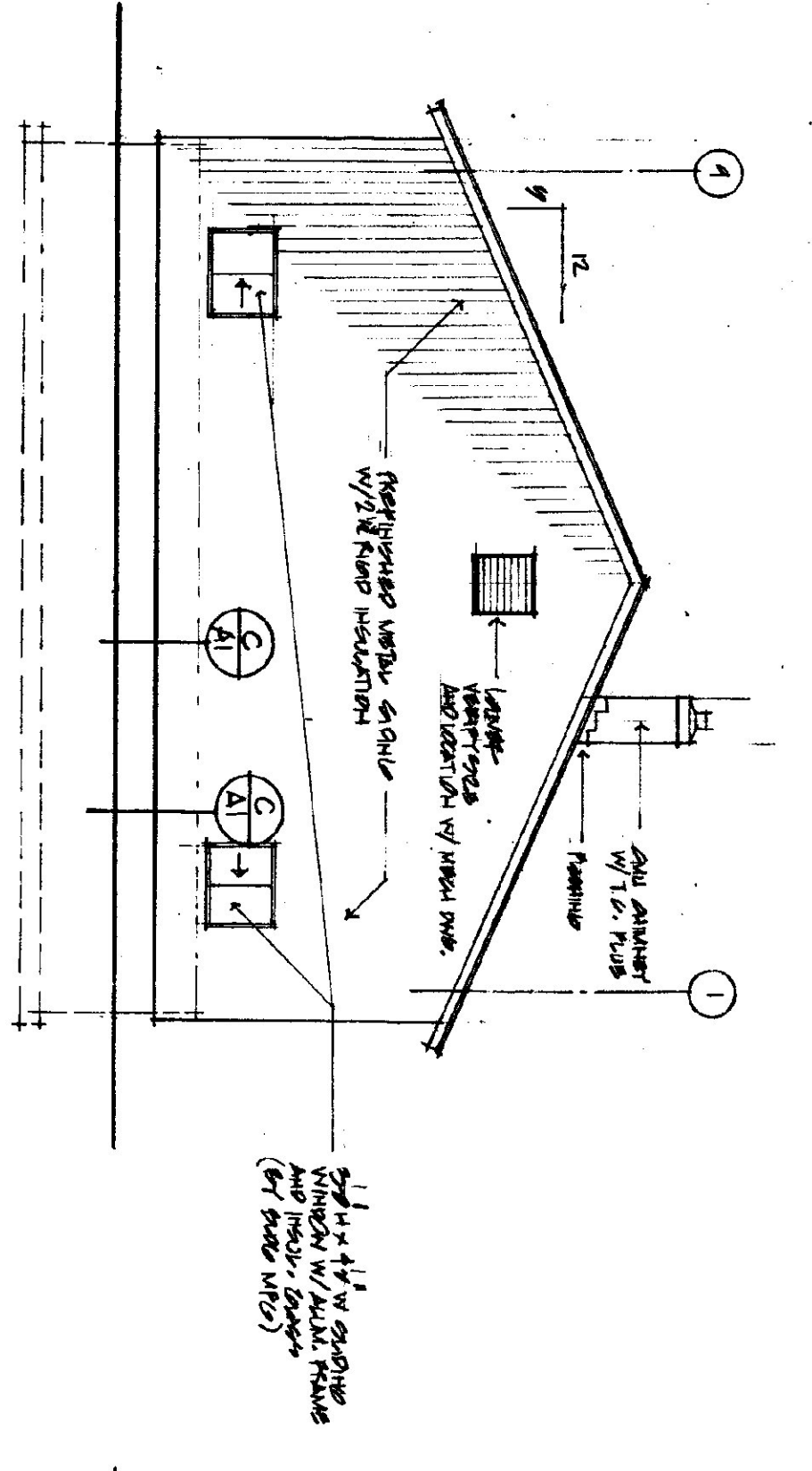
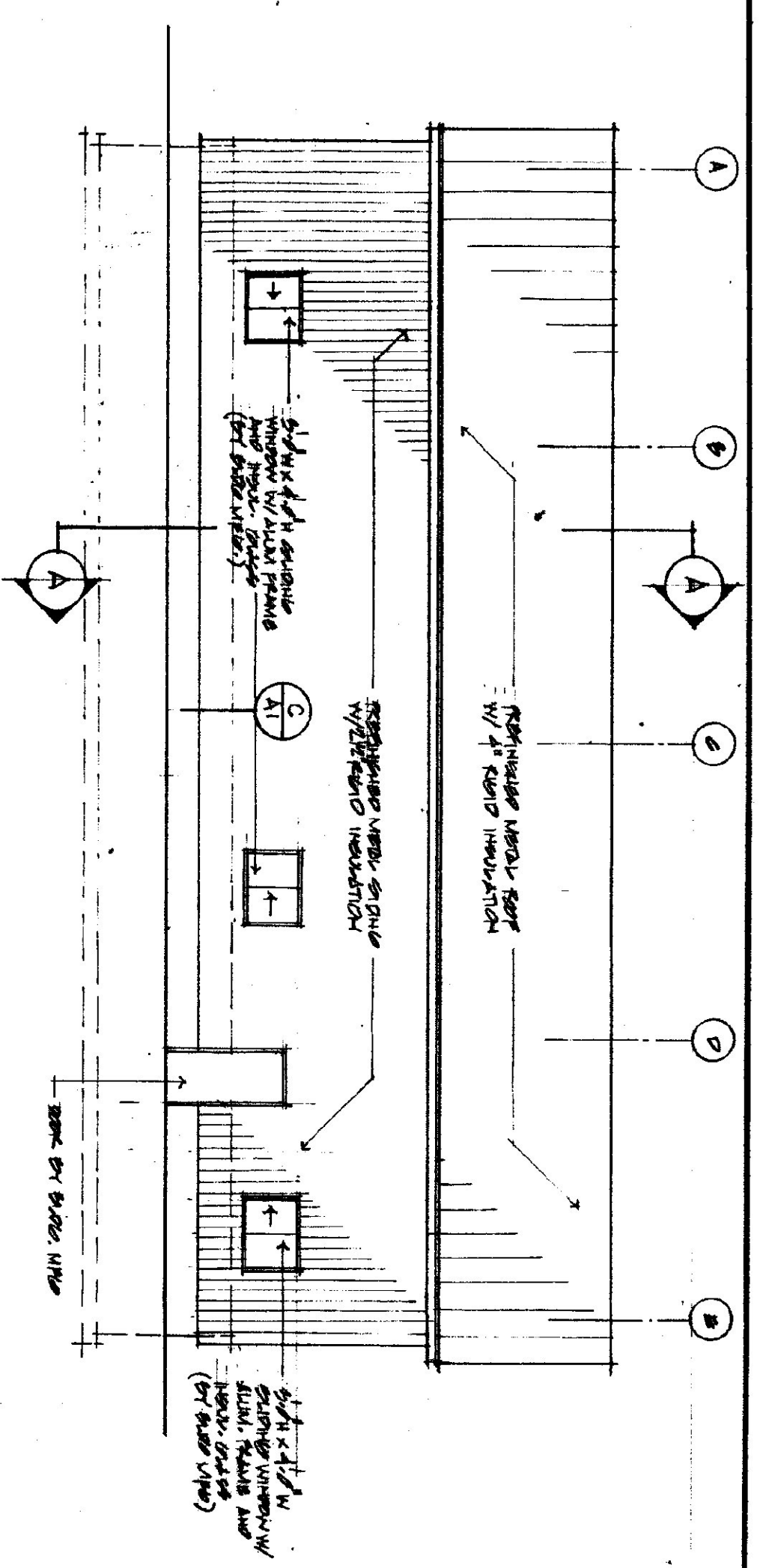


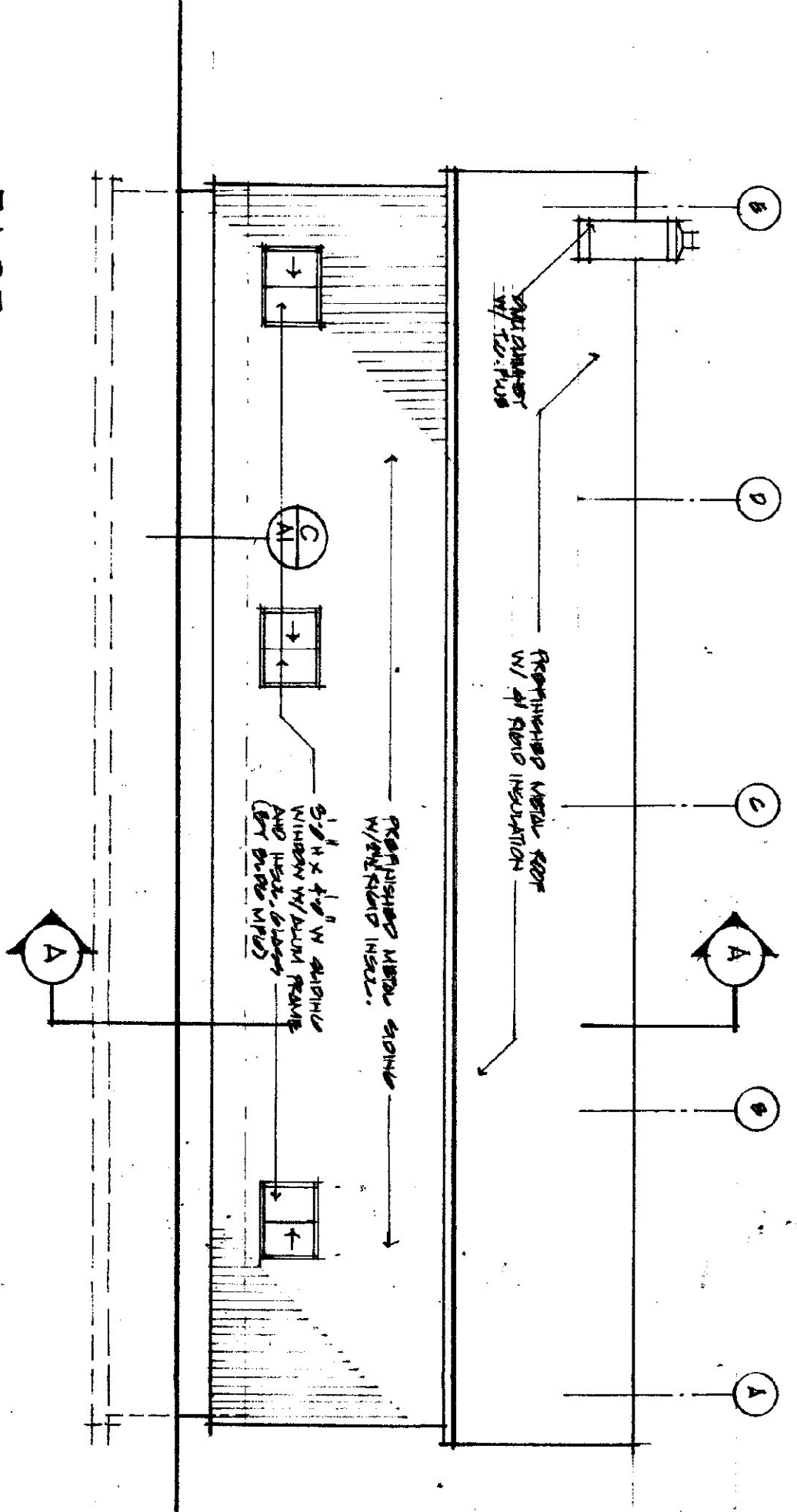
SECTION A



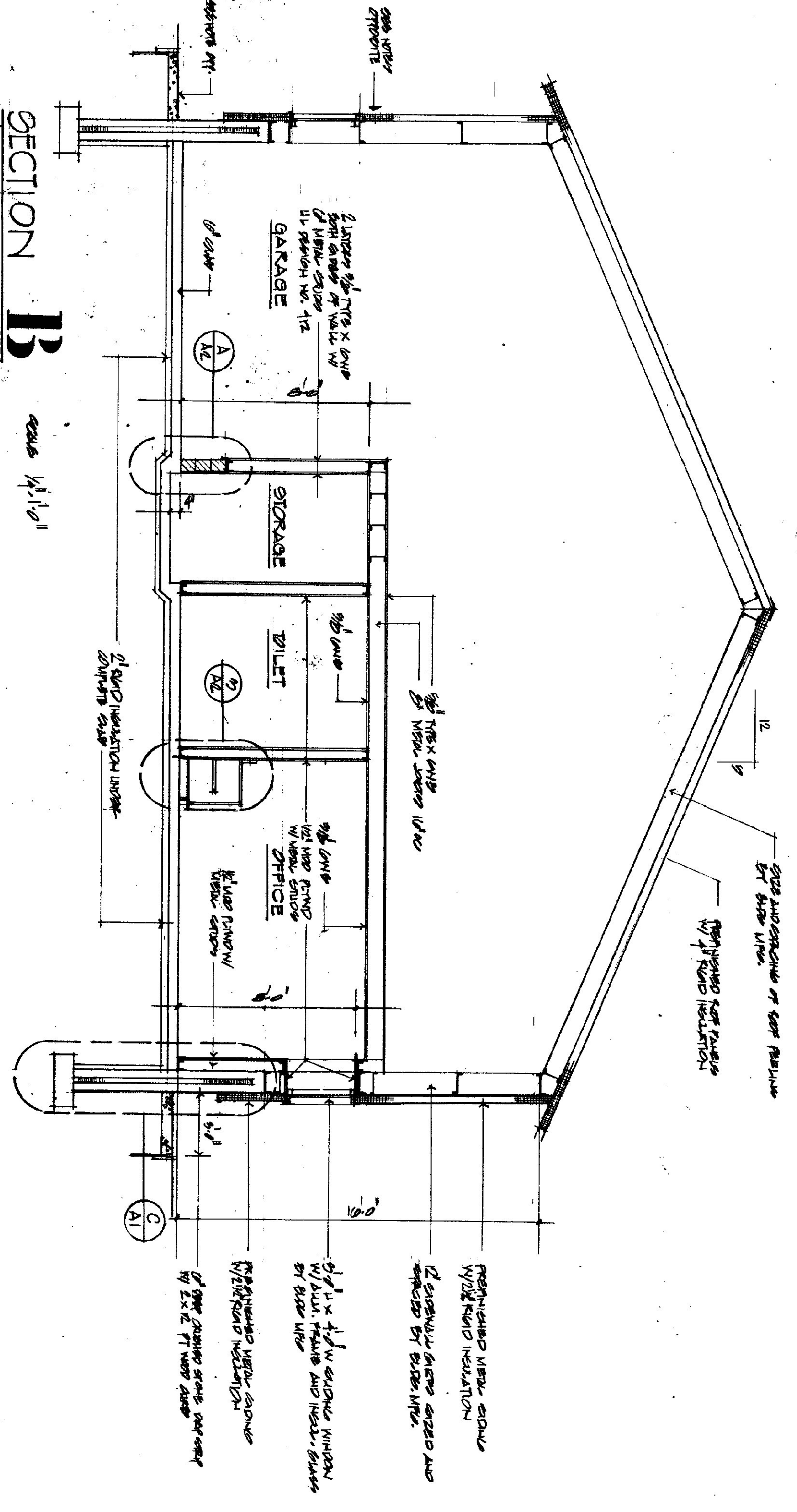
SOUTH



WEST



EAST



SECTION B

Scale 1/4" = 1'-0"

REGISTERED ARCHITECT
 STATE OF VERMONT
 PROJECT: WINGWOMEN GARAGE & SALTED
 VT ROUTE 112 WATERBURY VERMONT
 TITLE: SECTION A - BIERKUP ELEVATIONS

APRIL 2009

CHARLES E. METZ
 ARCHITECT
 THE GRIST MILL
 BRADFORD VT 05033

DRAWING: A-3