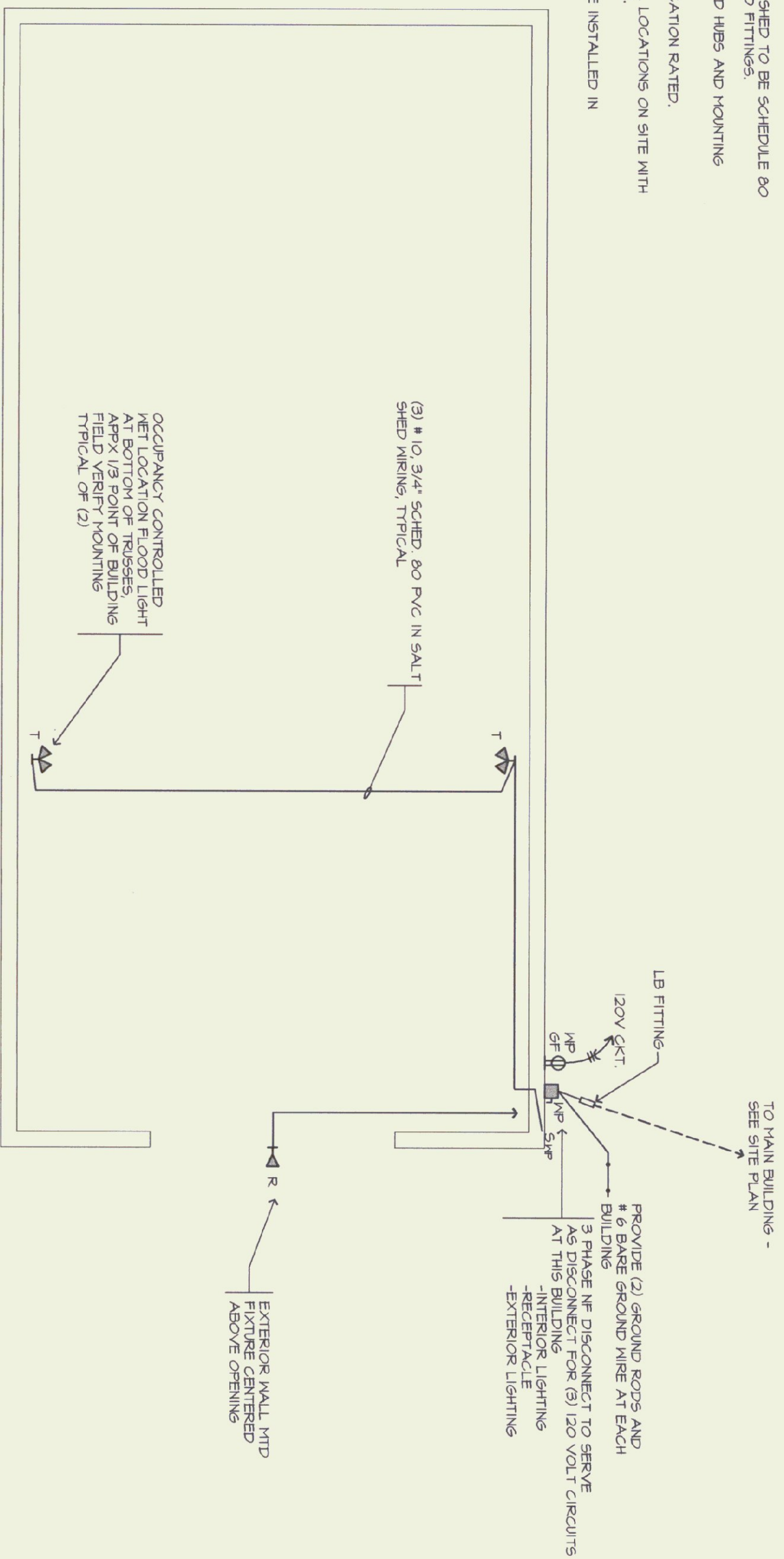
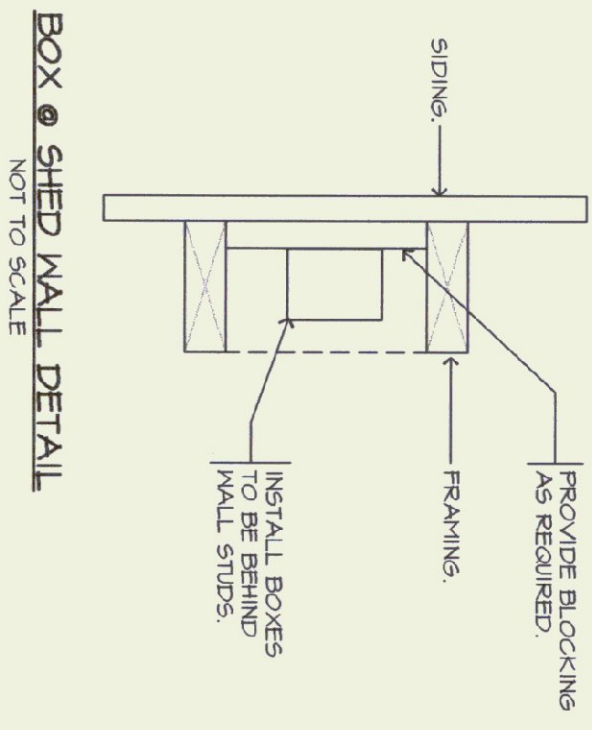


- SALT SHED WIRING NOTES**
1. WIRING WITHIN STORAGE SHED TO BE SCHEDULE 80 PVC CONDUIT WITH GLEED FITTINGS.
  2. BOXES TO INCLUDE GLEED HBS AND MOUNTING EARS.
  3. WIRING TO BE DAMP LOCATION RATED.
  4. FIELD VERIFY ALL FINAL LOCATIONS ON SITE WITH OWNER REPRESENTATIVE.
  5. CONDUIT IN BOXES TO BE INSTALLED IN BETWEEN WOOD STUDS.

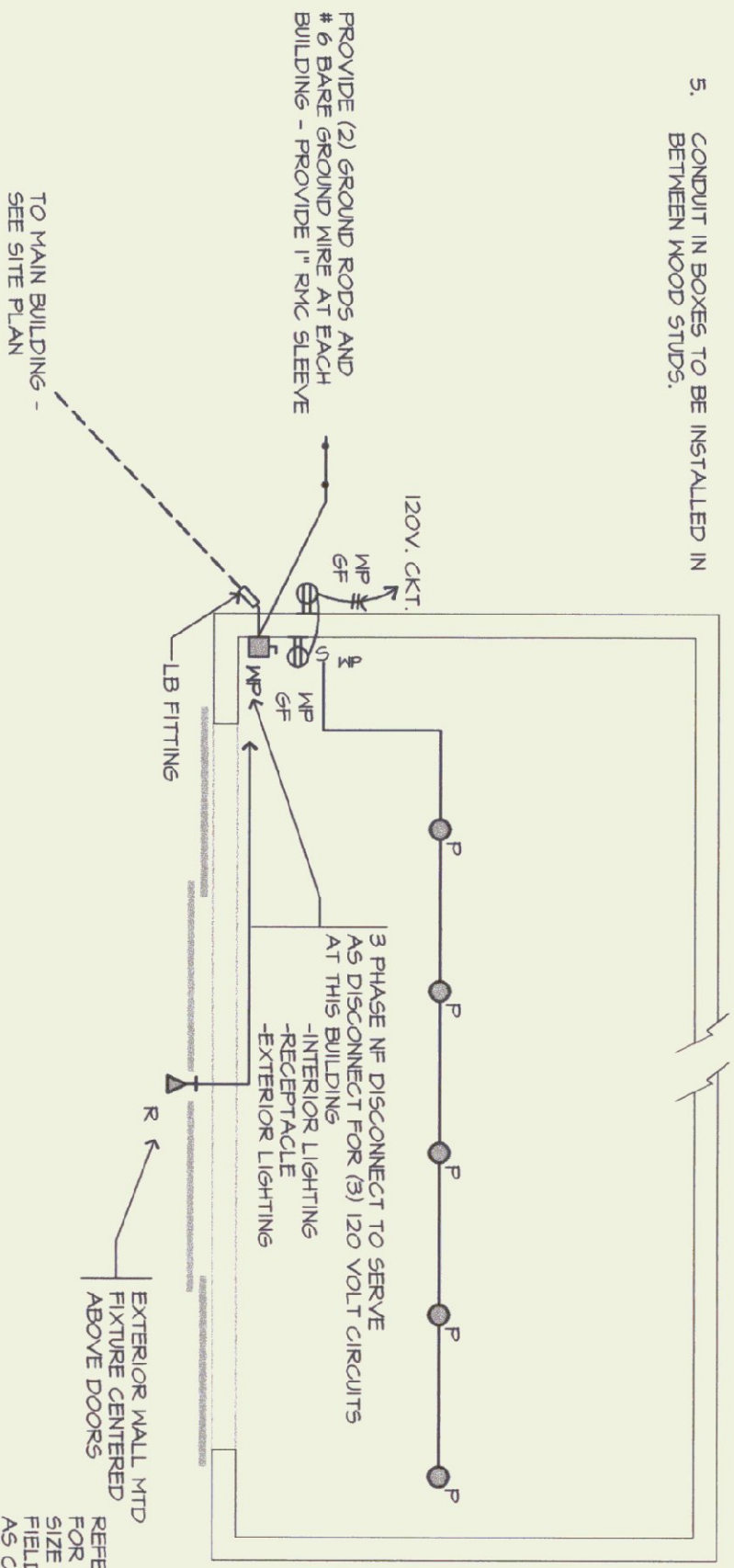


**SALT SHED ELECTRICAL PLAN (TOP OF 2)**  
SCALE: 1/8"=1'-0"

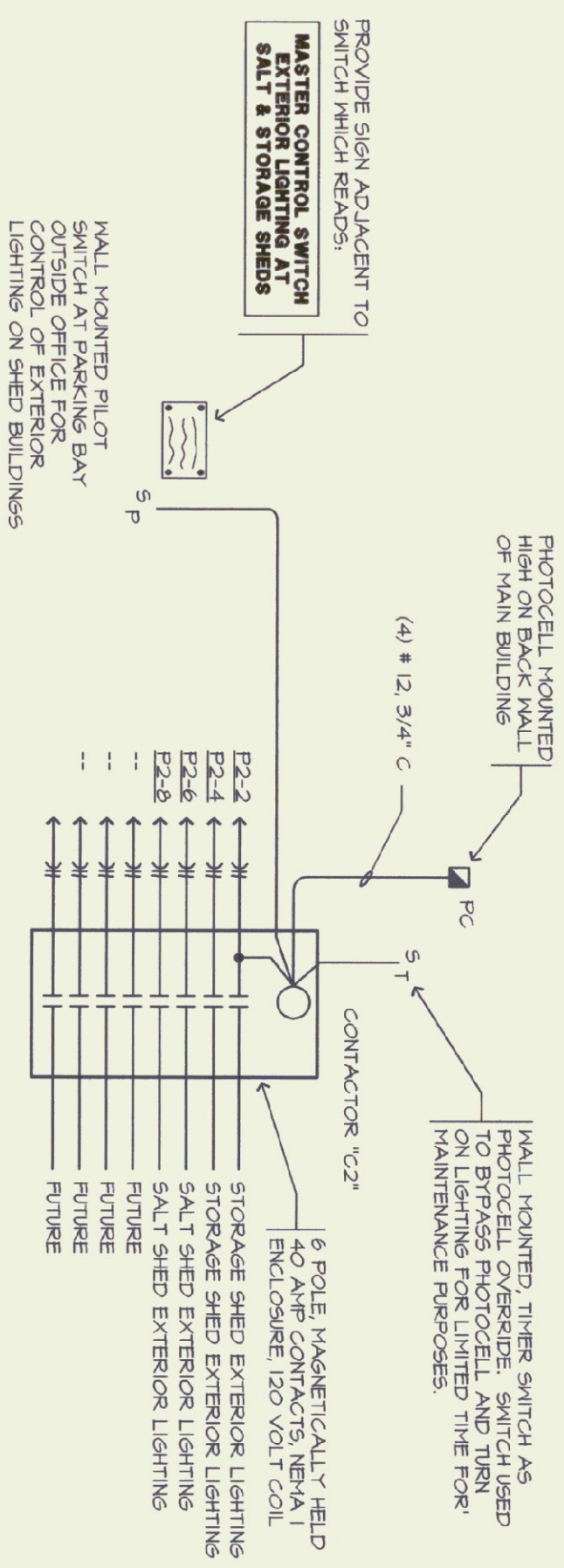


**BOX SHED WALL DETAIL**  
NOT TO SCALE

- STORAGE SHED WIRING NOTES**
1. WIRING WITHIN STORAGE SHED TO BE RMC CONDUIT WITH THREADED FITTINGS.
  2. BOXES TO INCLUDE THREADED HBS AND MOUNTING EARS.
  3. WIRING TO BE DAMP LOCATION RATED.
  4. FIELD VERIFY ALL FINAL LOCATIONS ON SITE WITH OWNER REPRESENTATIVE.
  5. CONDUIT IN BOXES TO BE INSTALLED IN BETWEEN WOOD STUDS.



**STORAGE SHED ELECTRICAL PLAN (TOP OF 2)**  
SCALE: 1/8"=1'-0"



**EXTERIOR LIGHTING CONTROL DIAGRAM**  
NOT TO SCALE

- RELOCATE BUILDING EXTERIOR LIGHTING CONTROL NOTES**
1. PHOTOCELL BUNDLES THAT THESE FIXTURES ARE NOT LEFT ON DURING DAYLIGHT HOURS.
  2. 5 MIN TIMER PERHITS PC OVERSIDE FOR MAINTENANCE.
  3. PILOT LIGHT TOGGLE SW ALLOWS OWNERS TO TURN LIGHTS ON FROM WITHIN MAIN BUILDING.



**mv engineering associates**  
pa  
00364  
mechanical electrical consulting engineers  
po box 764 keene, new hampshire 03491  
603 352 7007 fax 352 7005  
www.mvengineering.com

**D&W**  
DORE AND WHITTIER, INC.  
Architects • Project Managers  
1785 WILLISTON RD, STE 5  
S. BURLINGTON, VT 05403  
Phone: (802) 863-1428  
Fax: (802) 863-6955  
1400 HANCOCK STREET  
QUINCY, MA 02169  
Phone: (617) 471-2897  
Fax: (617) 471-2516

STATE OF VERMONT  
DEPARTMENT OF BUILDINGS  
AND GENERAL SERVICES  
AGENCY OF ADMINISTRATION  
MONTPELIER, VERMONT

AGENCY OF TRANSPORTATION  
HIGHGATE MAINTENANCE FACILITY  
HIGHGATE VERMONT

REVISIONS	SCALE:
DATE: 09/24/01	AS SHOWN
DRAWN BY: CTS	
APPR. BY: WRW	

HIGHGATE  
MAINTENANCE  
GARAGE  
ELECTRICAL  
SHED PLANS

E-5

37 OF 37