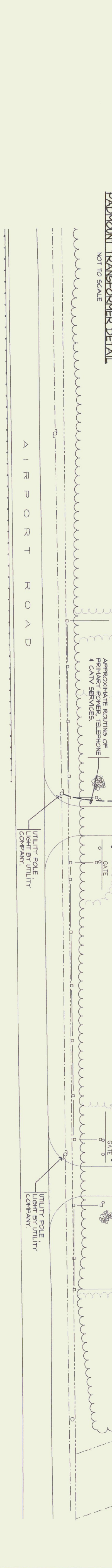
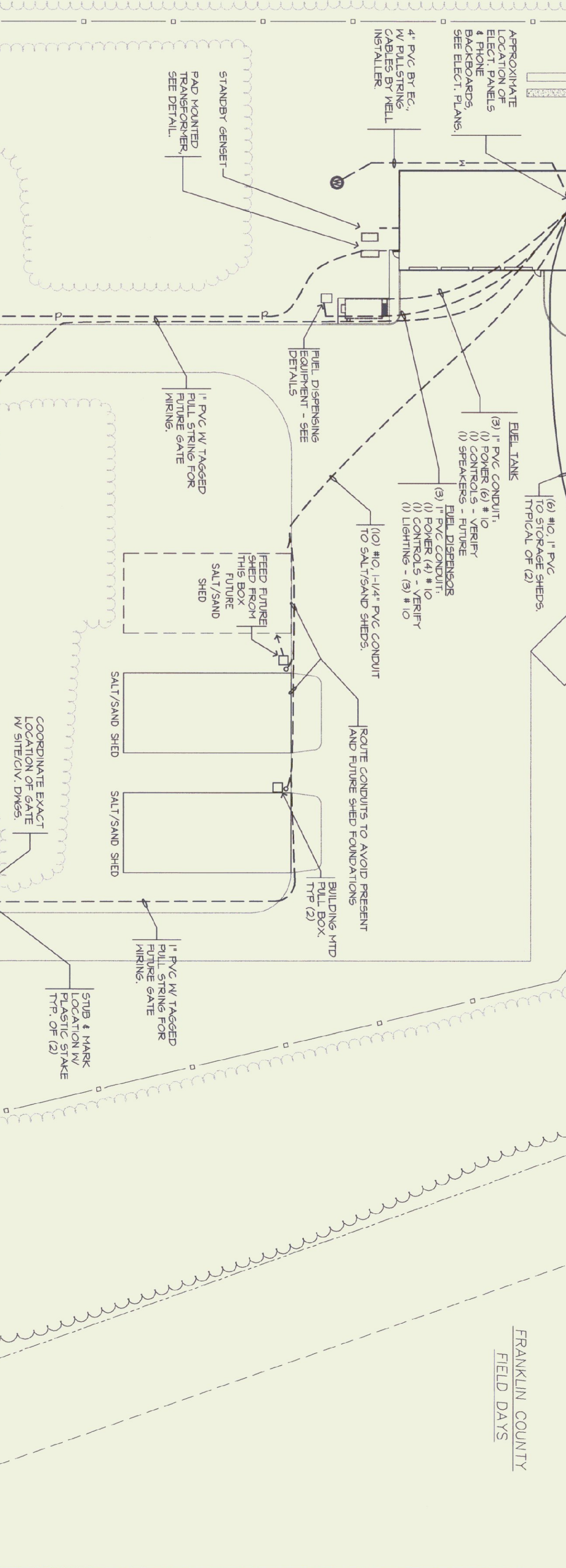
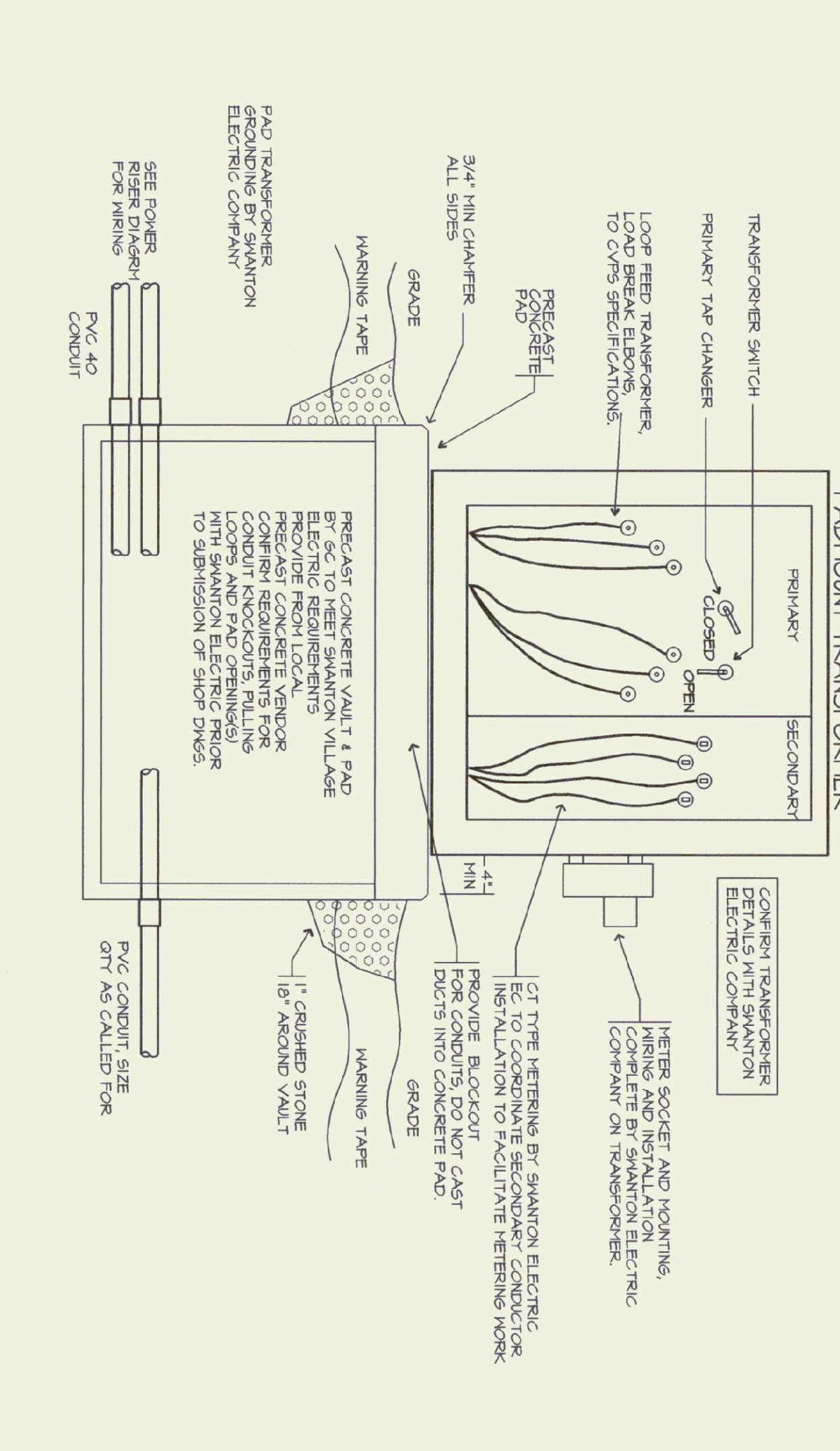
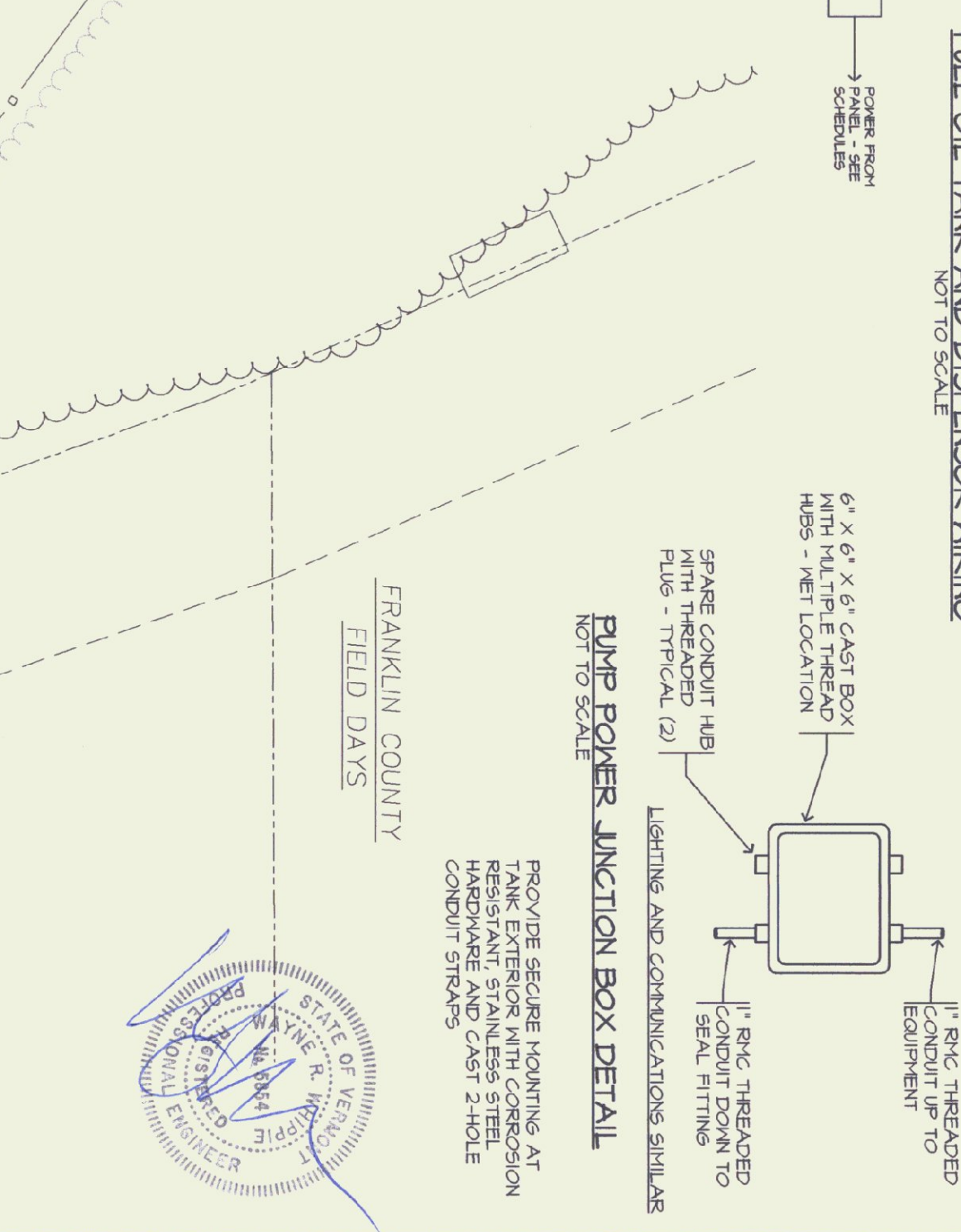
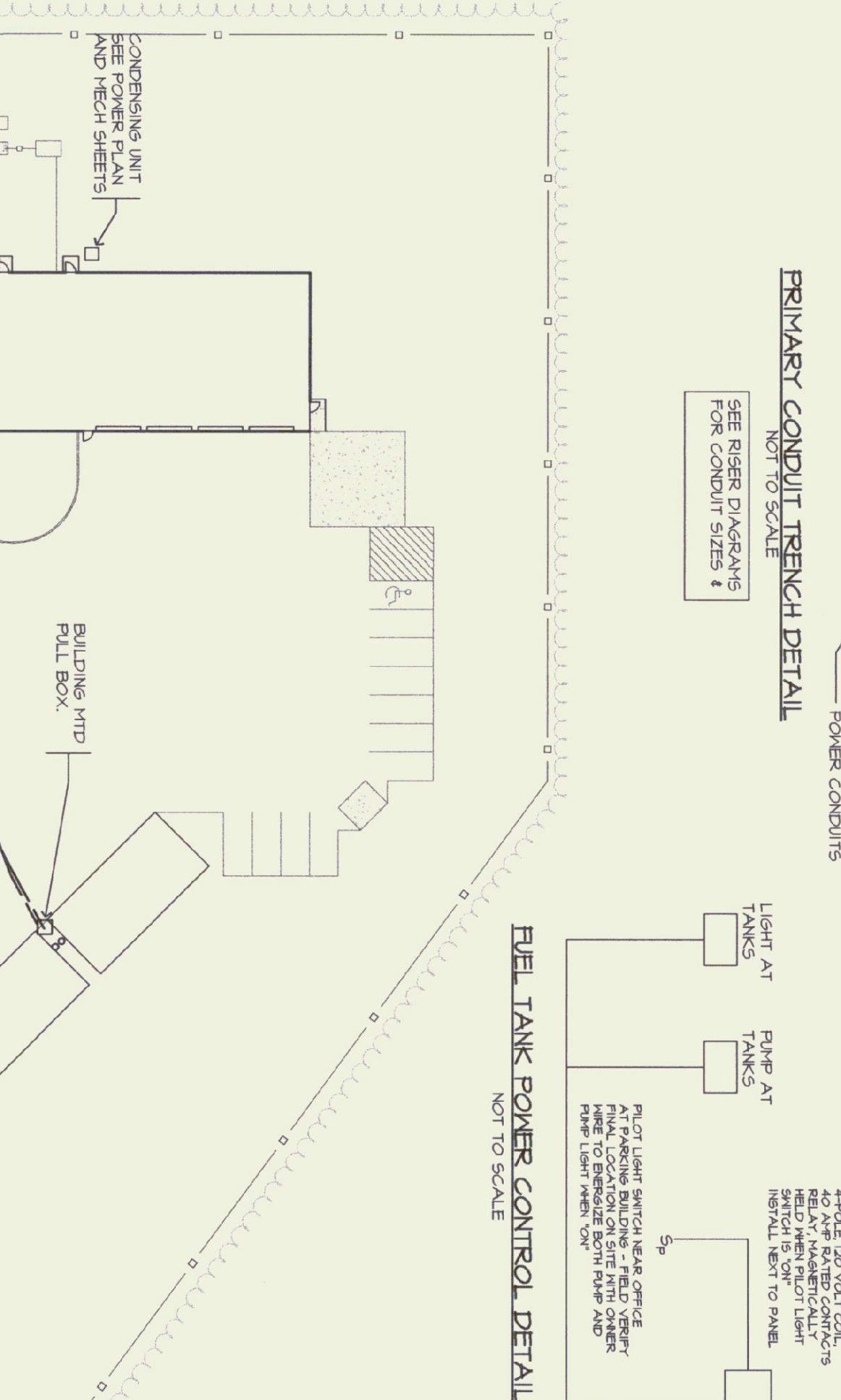
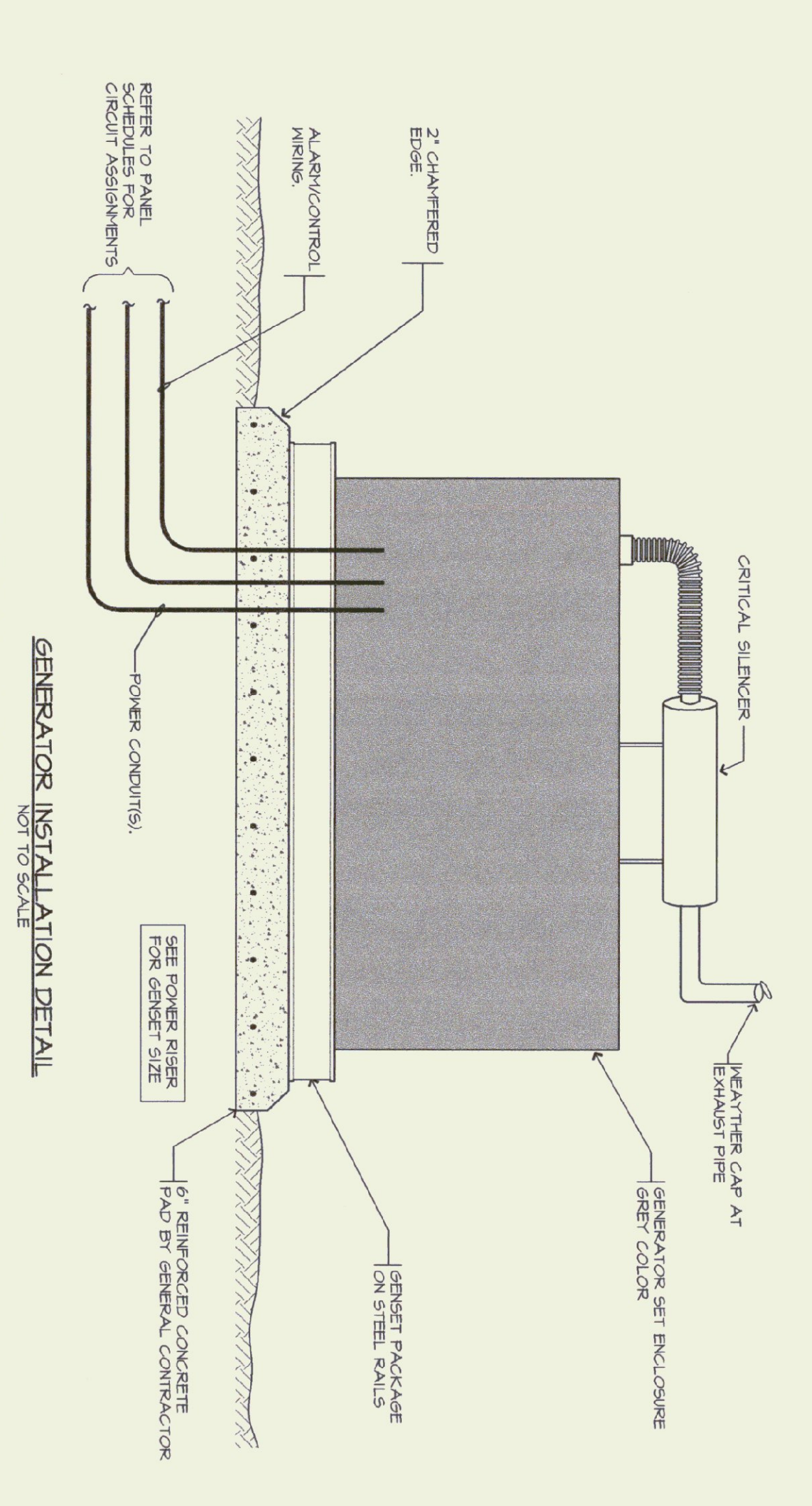


vw engineering associates
00369
mechanical electrical consulting engineers
po box 761 keene, new hampshire 03431
603 352 7007 fax 352 7005
www.vwengineering.com



AGENCY OF TRANSPORTATION
HIGHGATE MAINTENANCE FACILITY
HIGHGATE VERMONT

STATE OF VERMONT
DEPARTMENT OF BUILDINGS AND GENERAL SERVICES
AGENCY OF ADMINISTRATION
MONTPELIER, VERMONT

1795 WILLISTON RD, STE 5
S. BURLINGTON, VT 05403
Phone: (802) 863-1428
Fax: (802) 863-6955

1400 HANCOCK STREET
QUINCY, MA 02169
Phone: (617) 471-2887
Fax: (617) 471-2516

D&W
DORE AND WHITTIER, INC.
Architects • Project Managers

REVISIONS	AS SHOWN
DATE:	09/24/01
DRAWN BY:	CTS
APPR. BY:	WRW

SCALE: AS SHOWN

DATE: 09/24/01

DRAWN BY: CTS

APPR. BY: WRW

33 OF 37