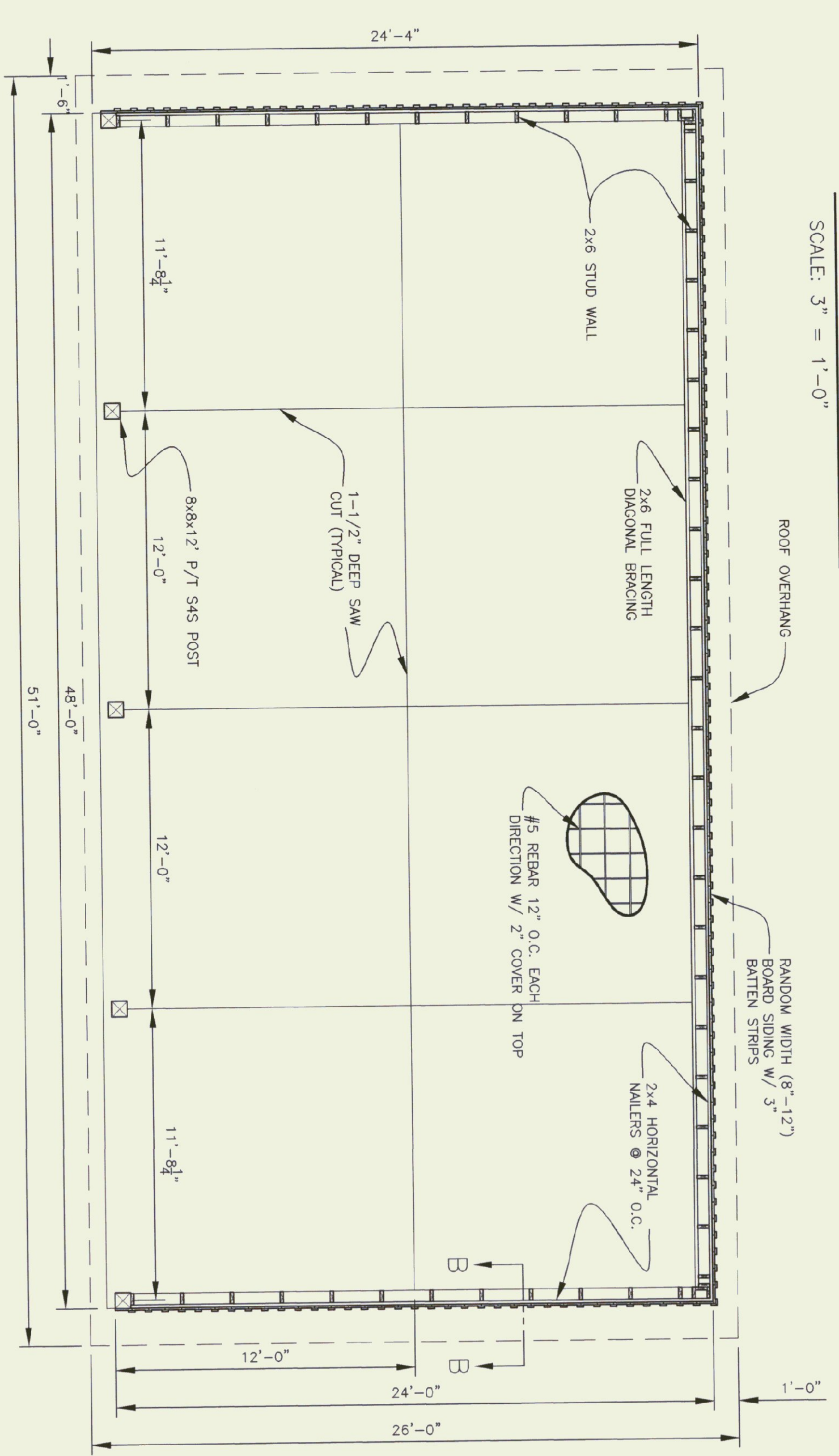
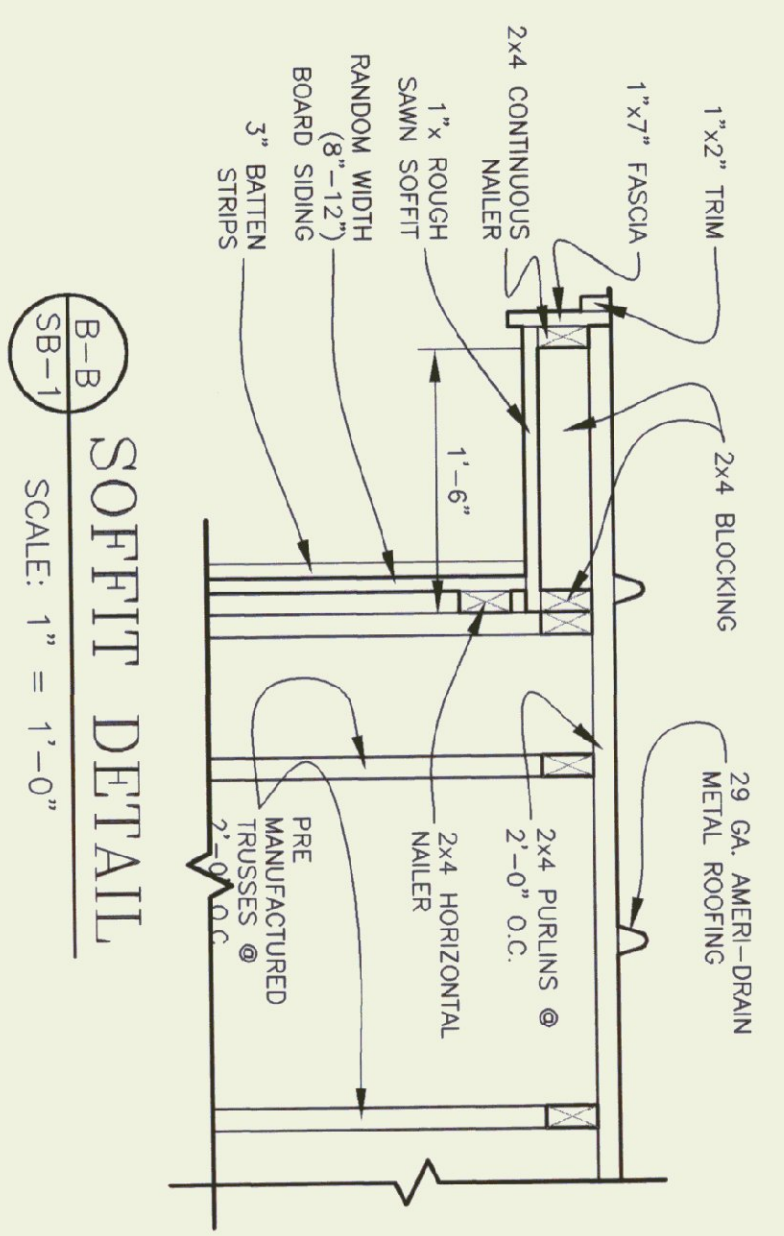


NOTES:
POST BASE TO BE FABRICATED FROM 1/4" PLATE STEEL PRIME & PAINTED BLACK BEFORE INSTALLATION.



SHED PLAN

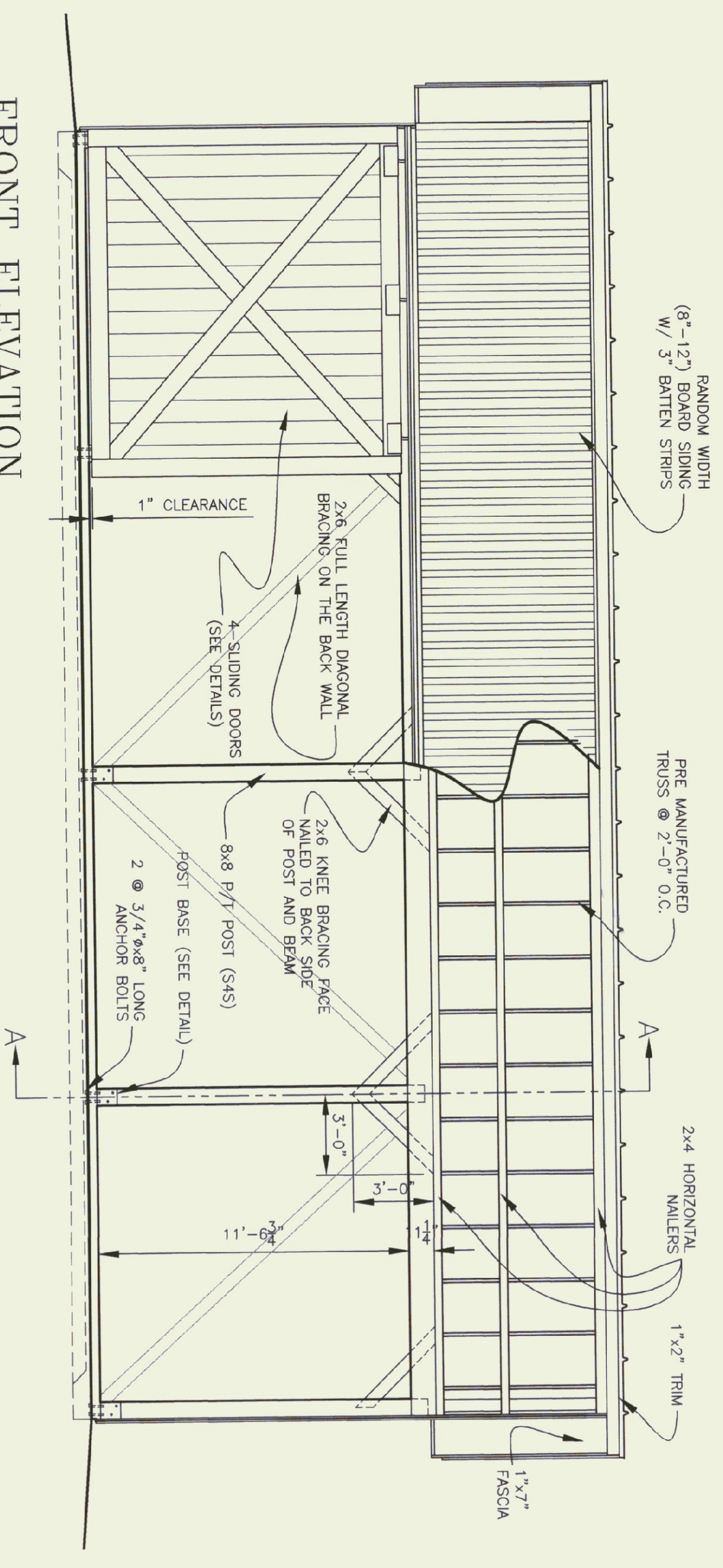
SCALE: 1/4" = 1'-0"

POST BASE DETAIL

SCALE: 3" = 1'-0"

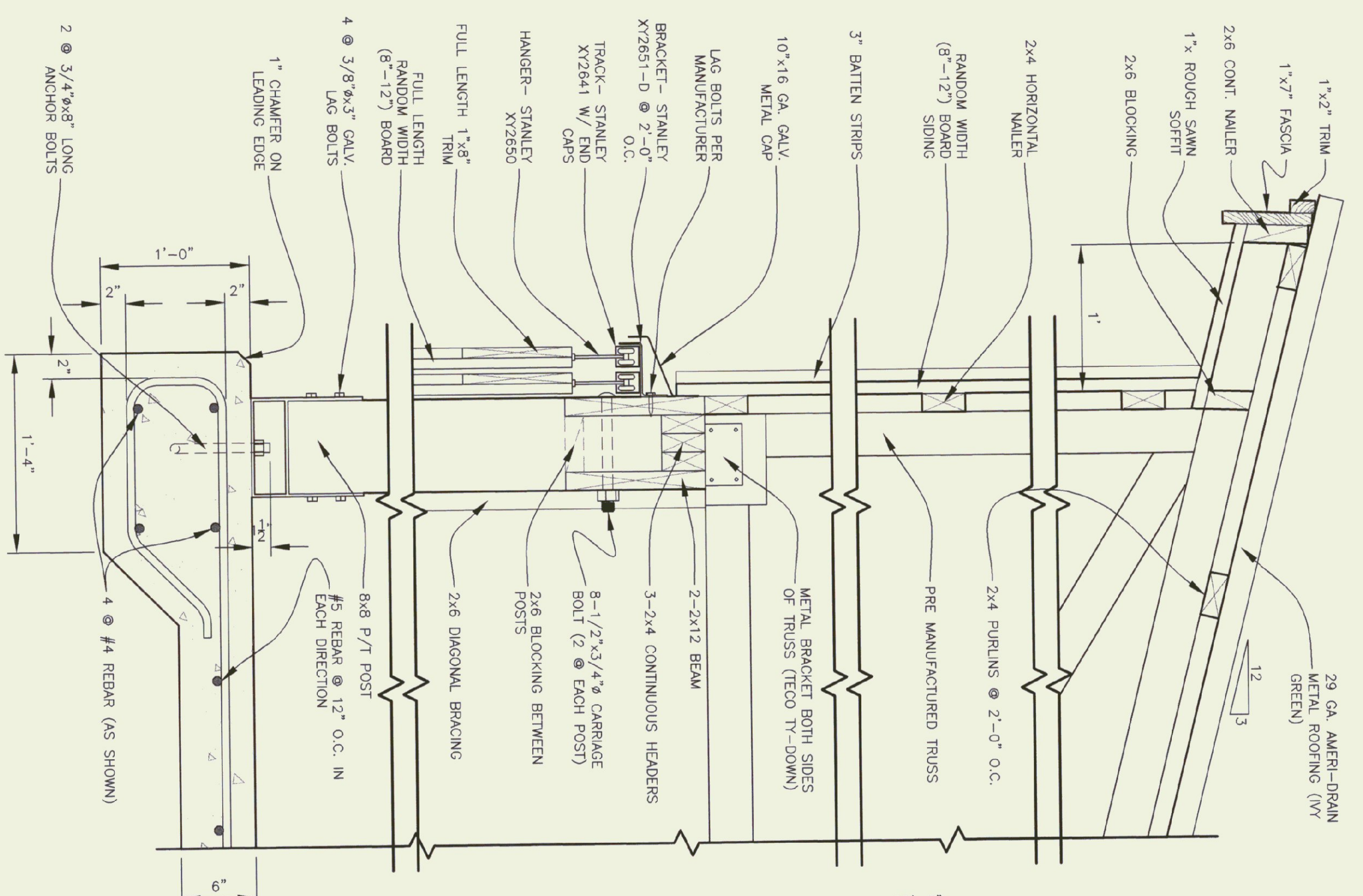
SOFFIT DETAIL

SCALE: 1" = 1'-0"



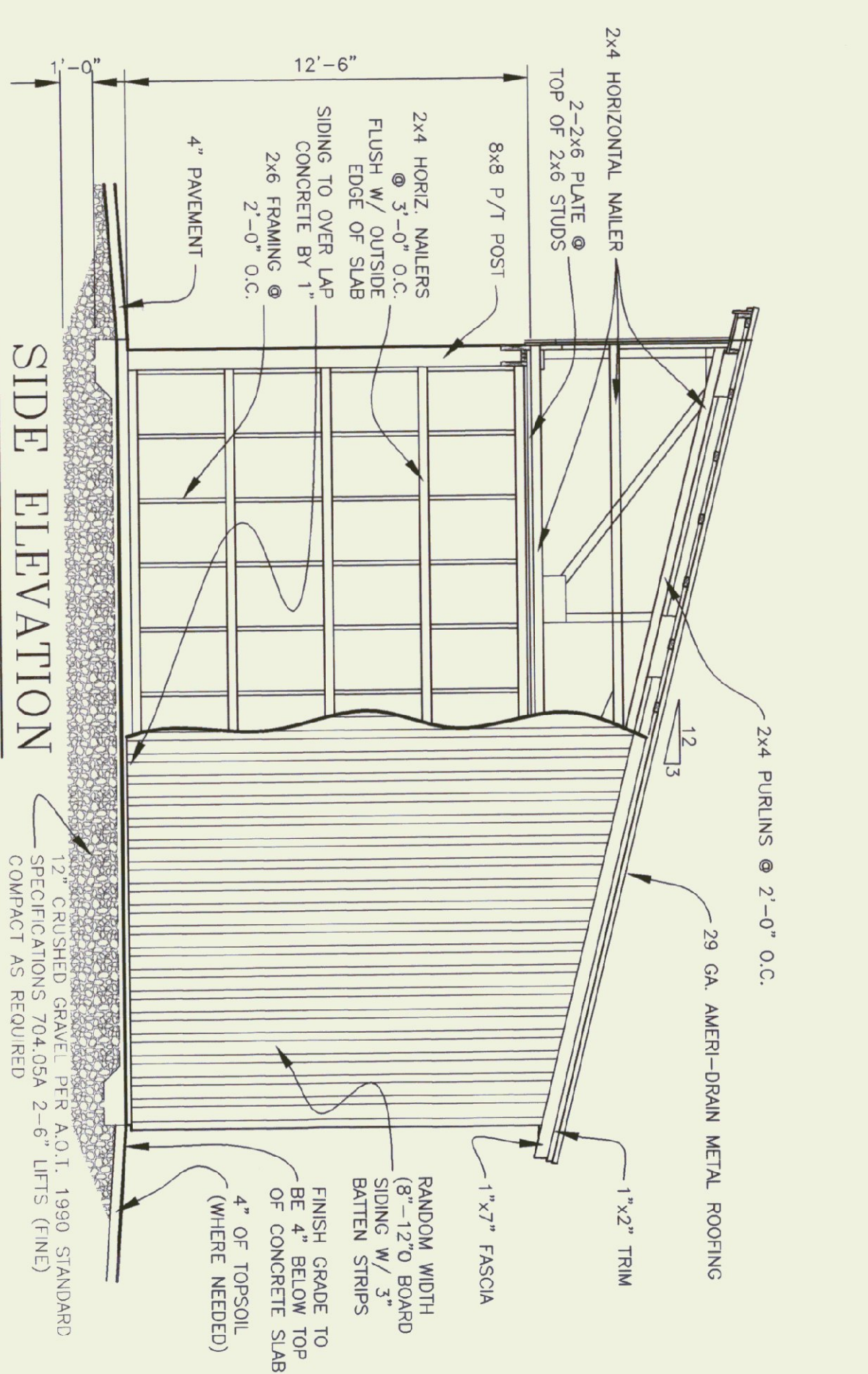
FRONT ELEVATION

SCALE: 1/4" = 1'-0"



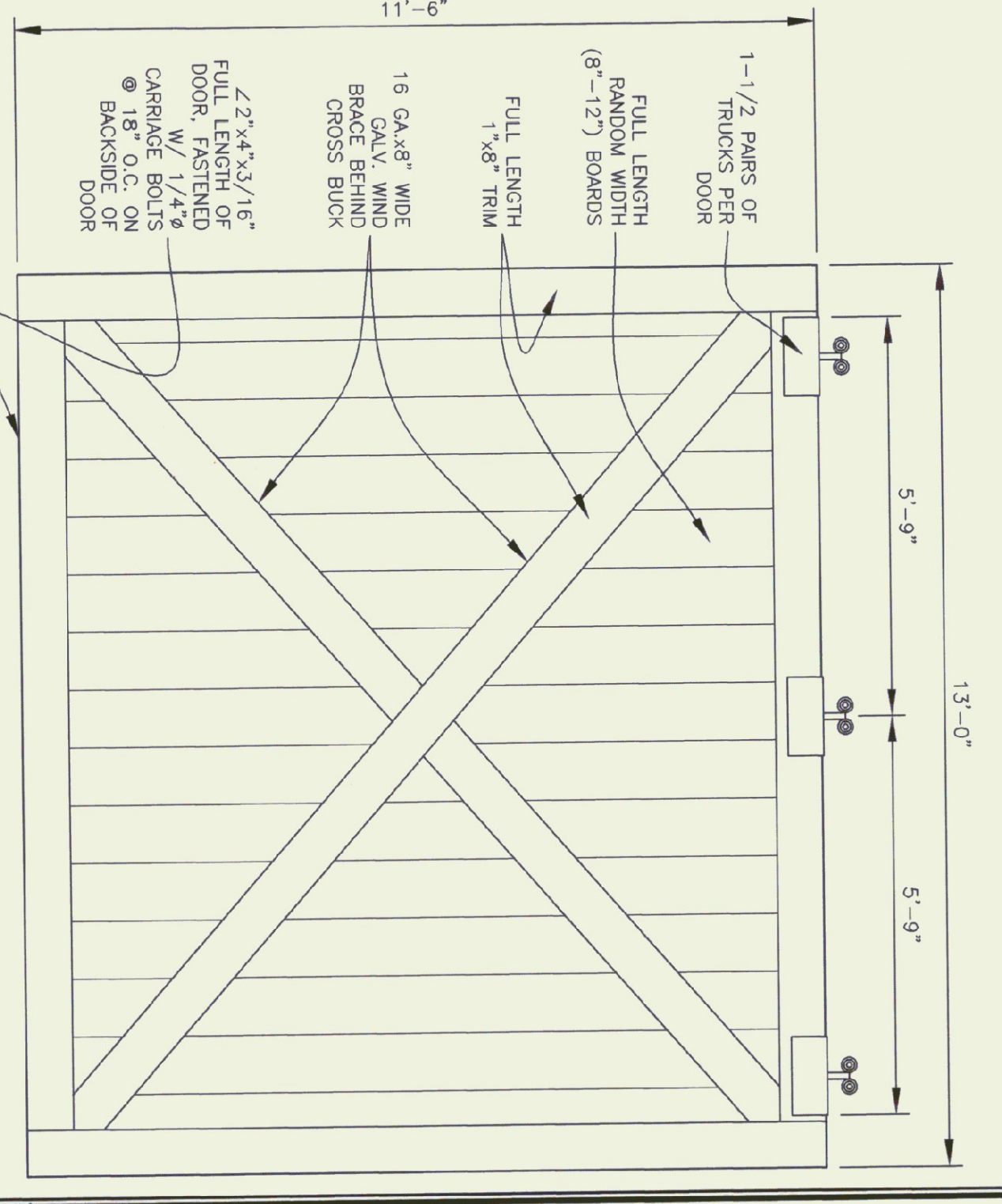
SECTION A-A

SCALE: 1-1/2" = 1'-0"



SIDE ELEVATION

SCALE: 1/4" = 1'-0"



DOOR DETAIL

SCALE: 1/2" = 1'-0"

GENERAL NOTES

TRUSS NOTES
TRUSS MANUFACTURER TO PROVIDE DEPT. OF STATE BUILDINGS ENGINEER A SET OF ENGINEERED & STAMPED DRAWINGS FOR APPROVAL PRIOR TO TRUSS MANUFACTURE.
TRUSS MANUFACTURER TO PROVIDE THE CONTRACTOR WITH ALL NECESSARY INSTRUCTIONS FOR PROPER TRUSS INSTALLATION, ANCHORAGE, BRACING, LIFTING, ECT.
TRUSS DESIGN LOADS IN ACCORDANCE WITH THE 1987 B.O.C.A. FOR VERMONT.

MINIMUM LOADS:
LIVE - PER 1987 B.O.C.A. FOR VERMONT (40 PSF MIN.)
DEAD - AS CALCULATED FROM TRUSS & ROOF MATERIAL
5 PSF ON BOTTOM CHORD
WIND - 25 PSF
DIAGONAL WIND BRACING PER TRUSS MANUFACTURE.

LUMBER NOTES:
FRAMING MEMBERS TO BE KILN DRIED CONSTRUCTION GRADE SPRUCE S4S 19% MOISTURE CONTENT.
PLATES & NAILERS IN CONTACT WITH CONCRETE TO BE CCA 0.40 TREATED BOARD & BATTEN SIDING, TRIM, AND SOFFIT MATERIAL TO BE NATIVE ROUGH SAWN WHITE PINE, SPRUCE, EASTERN FIR OR RED PINE. BOARDS TO BE RANDOM WIDTH 8'-12" - BATTEN 3".
BOARD SIDING & BATTEN STRIPS TO BE FULL LENGTH (NO HORIZONTAL JOINTS).

FINISH NOTES:
ALL FASTENERS TO BE GALVANIZED AND SHALL BE APPROPRIATELY SIZED.
ALL BOARDS & BATTEN TO BE STAINED WITH ONE COAT (ALL SURFACES) PRIOR TO INSTALLATION. AFTER INSTALLATION EXTERIOR SIDING TO RECEIVE ONE ADDITIONAL COAT OF STAIN.
ROOFING COLOR: IVY GREEN (BY AMERI-DRAIN)
STAIN TO BE OLIVAMP OIL BASE SEMI-TRANSPARENT OXFORD BROWN #713.

CONCRETE NOTES: PER A.O.T. STANDARD.
STRENGTH: 3500 PSI
FINISH: FLOATED
CURING METHOD: PER TABLE 501.17A



STATE OF VERMONT
Department of Buildings
and General Services
Agency of Administration
Montpelier, Vermont

AGENCY OF TRANSPORTATION
HIGHGATE MAINTENANCE FACILITY
24'x48' STORAGE SHED
VERMONT

REVISIONS
9/1/99 BTM
10/15/99 ADW
09/05/01 BTM

SCALE: As Noted
DATE: 09/24/01
DRAWN BY: Brad McAvoy
APPR. BY:
A.O.T.
24'x48'
STORAGE SHED
HIGHGATE