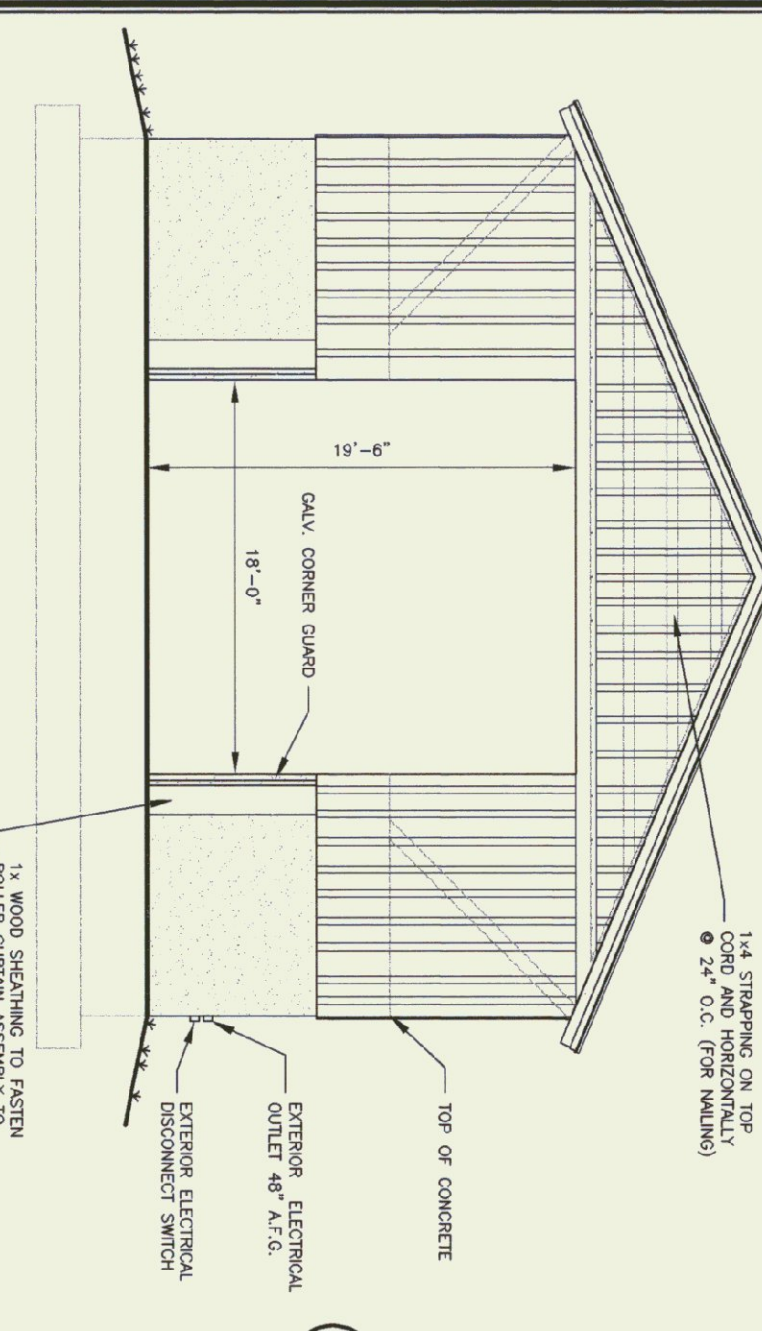
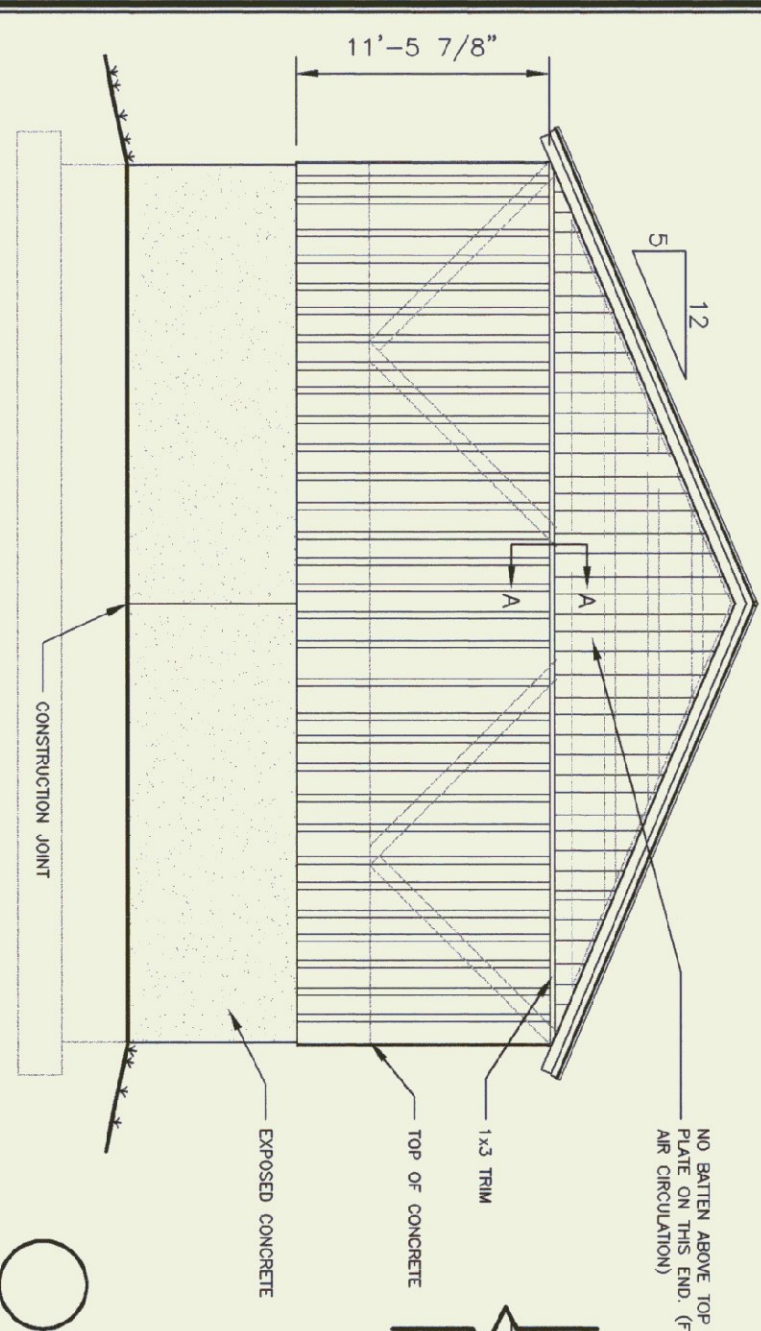


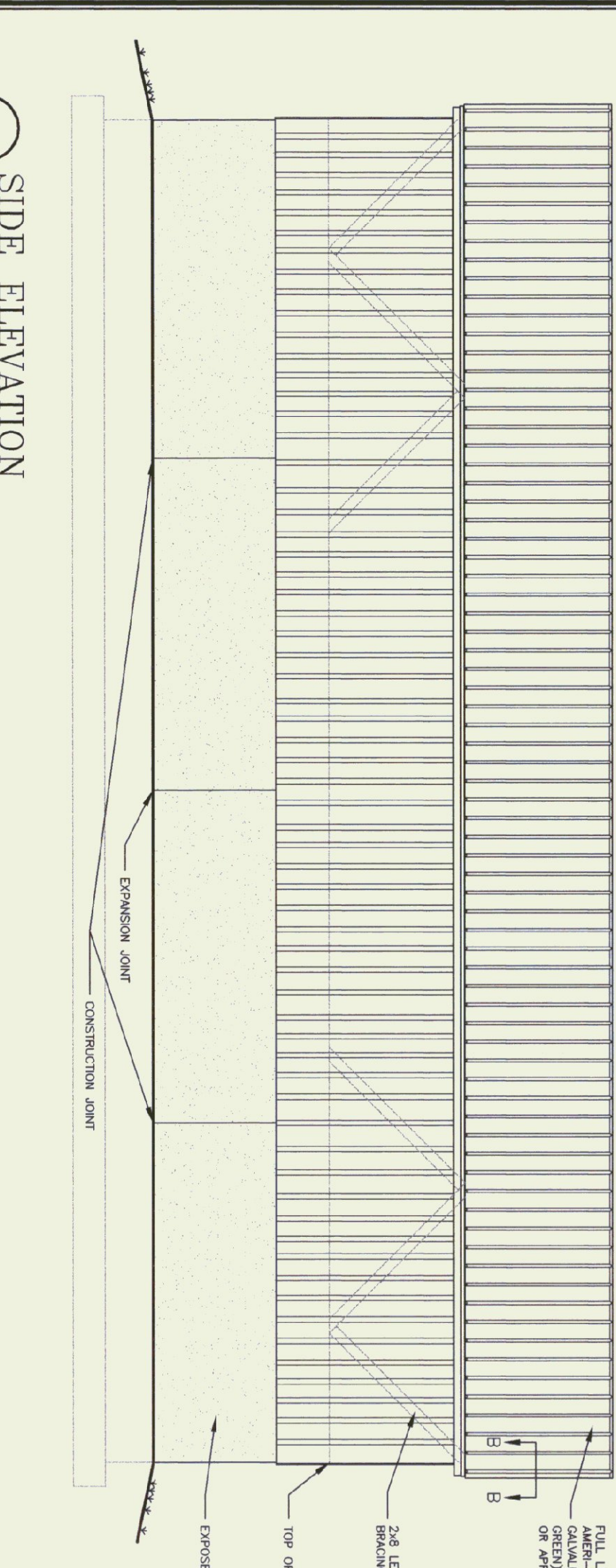
FOUNDATION PLAN
SCALE 1/8" = 1'-0"



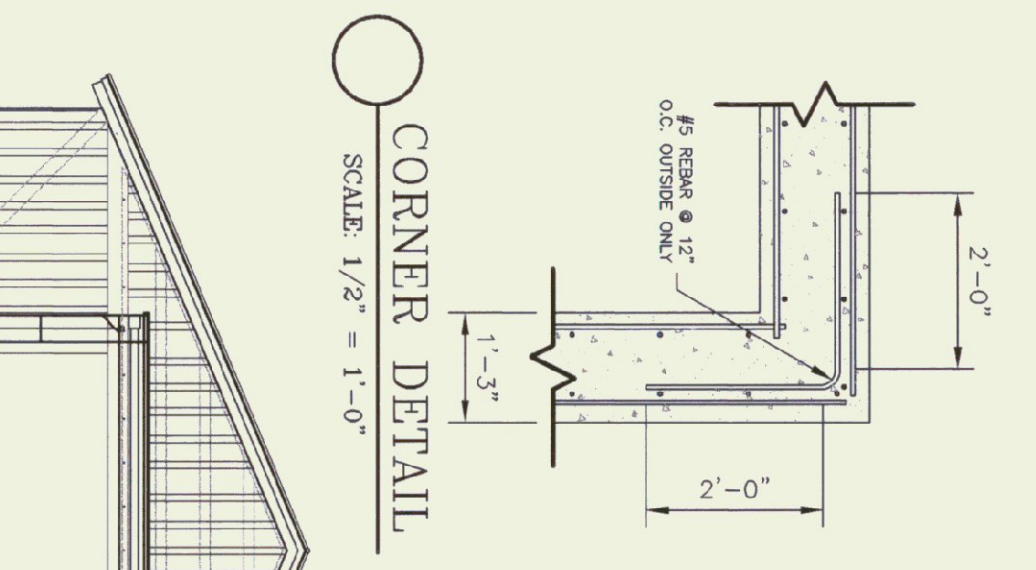
FRONT ELEVATION
SCALE 1/8" = 1'-0"



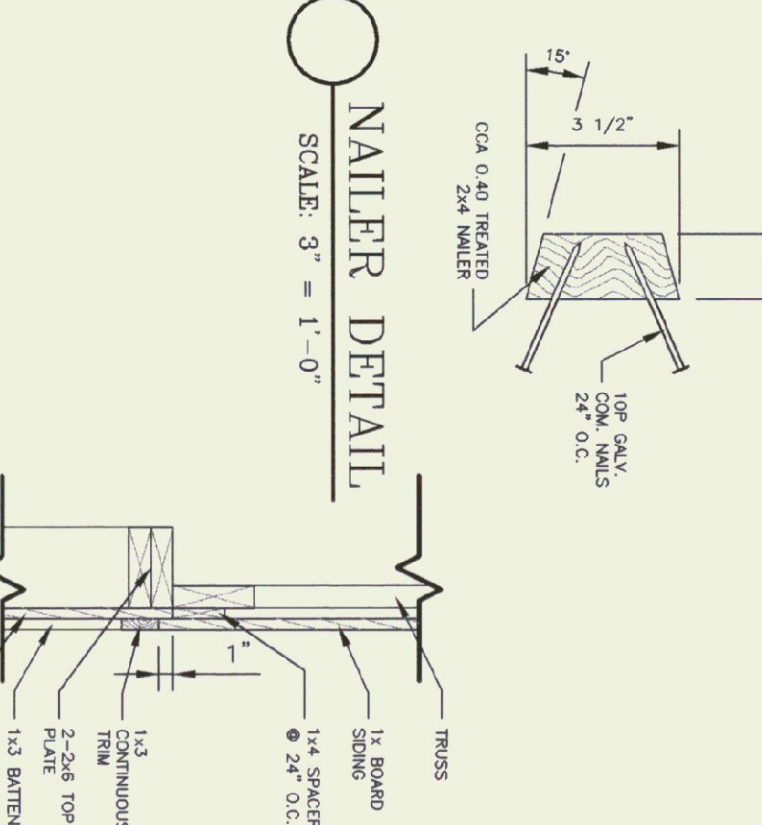
BACK ELEVATION
SCALE 1/8" = 1'-0"



SIDE ELEVATION
SCALE 1/8" = 1'-0"

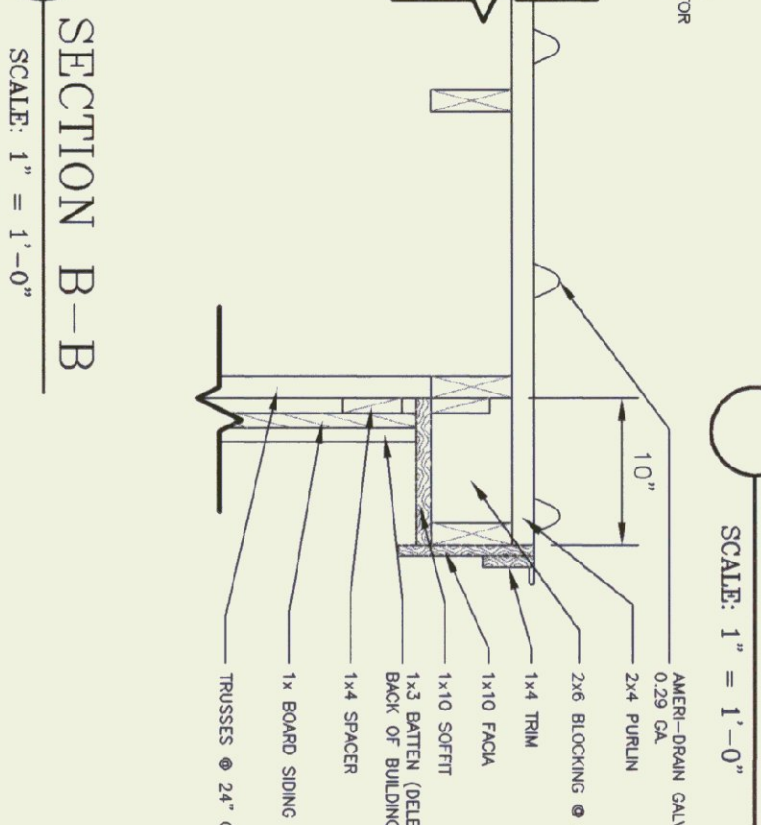


CORNER DETAIL
SCALE 1/2" = 1'-0"

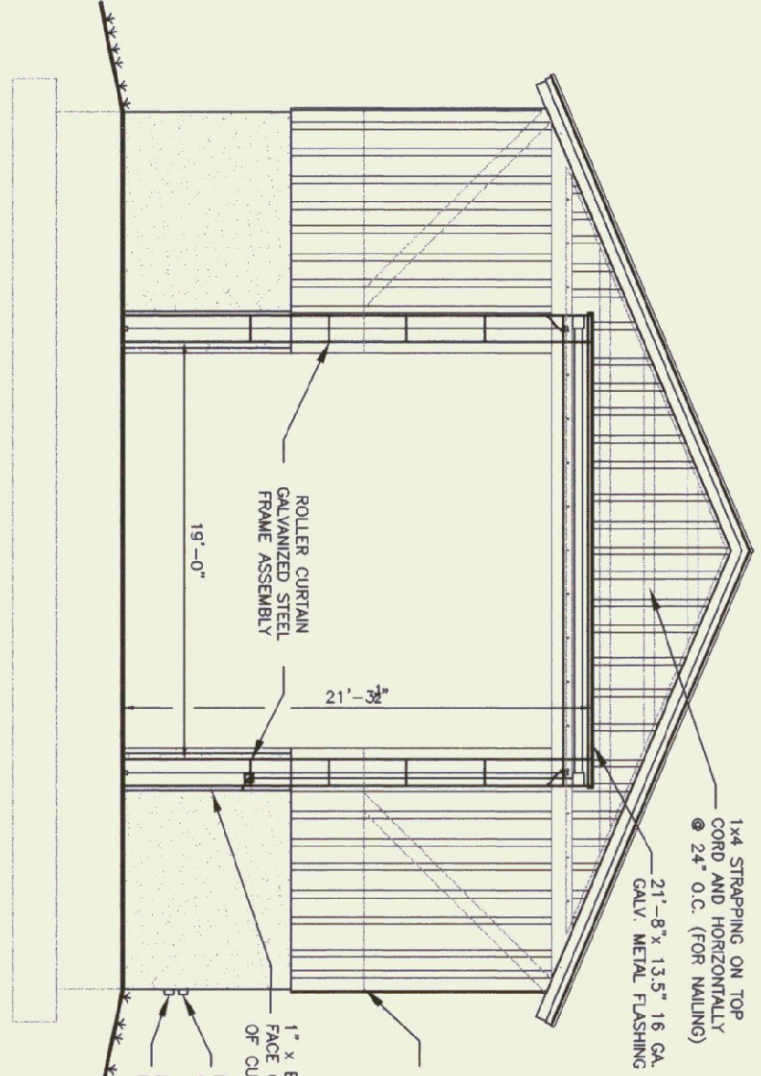


NAILER DETAIL
SCALE 3" = 1'-0"

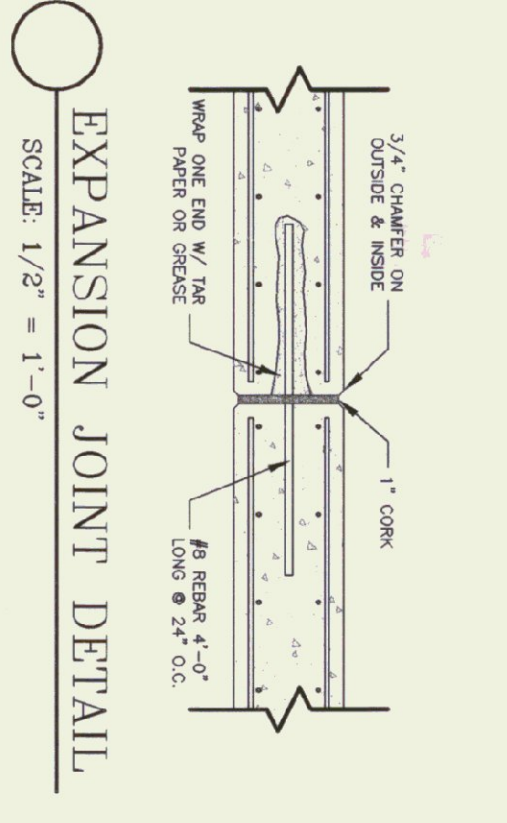
SECTION A-A
SCALE 1" = 1'-0"



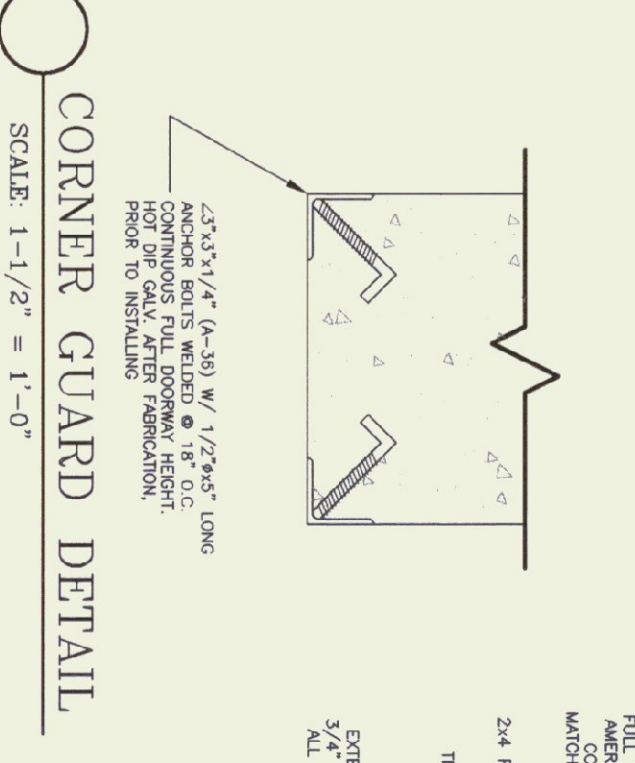
SECTION B-B
SCALE 1" = 1'-0"



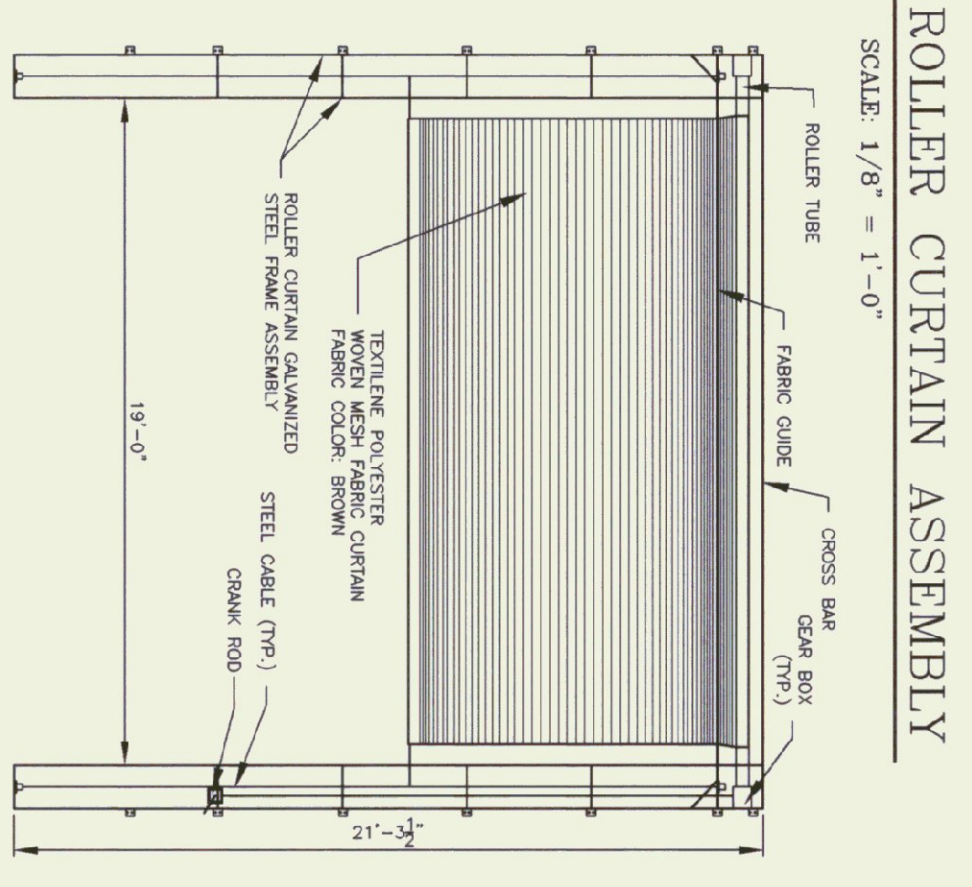
ROLLER CURTAIN ASSEMBLY
SCALE 1/8" = 1'-0"



EXPANSION JOINT DETAIL
SCALE 1/2" = 1'-0"



CORNER GUARD DETAIL
SCALE 1-1/2" = 1'-0"



NEW ROLLER CURTAIN
SCALE: N.T.S.

GENERAL NOTES:

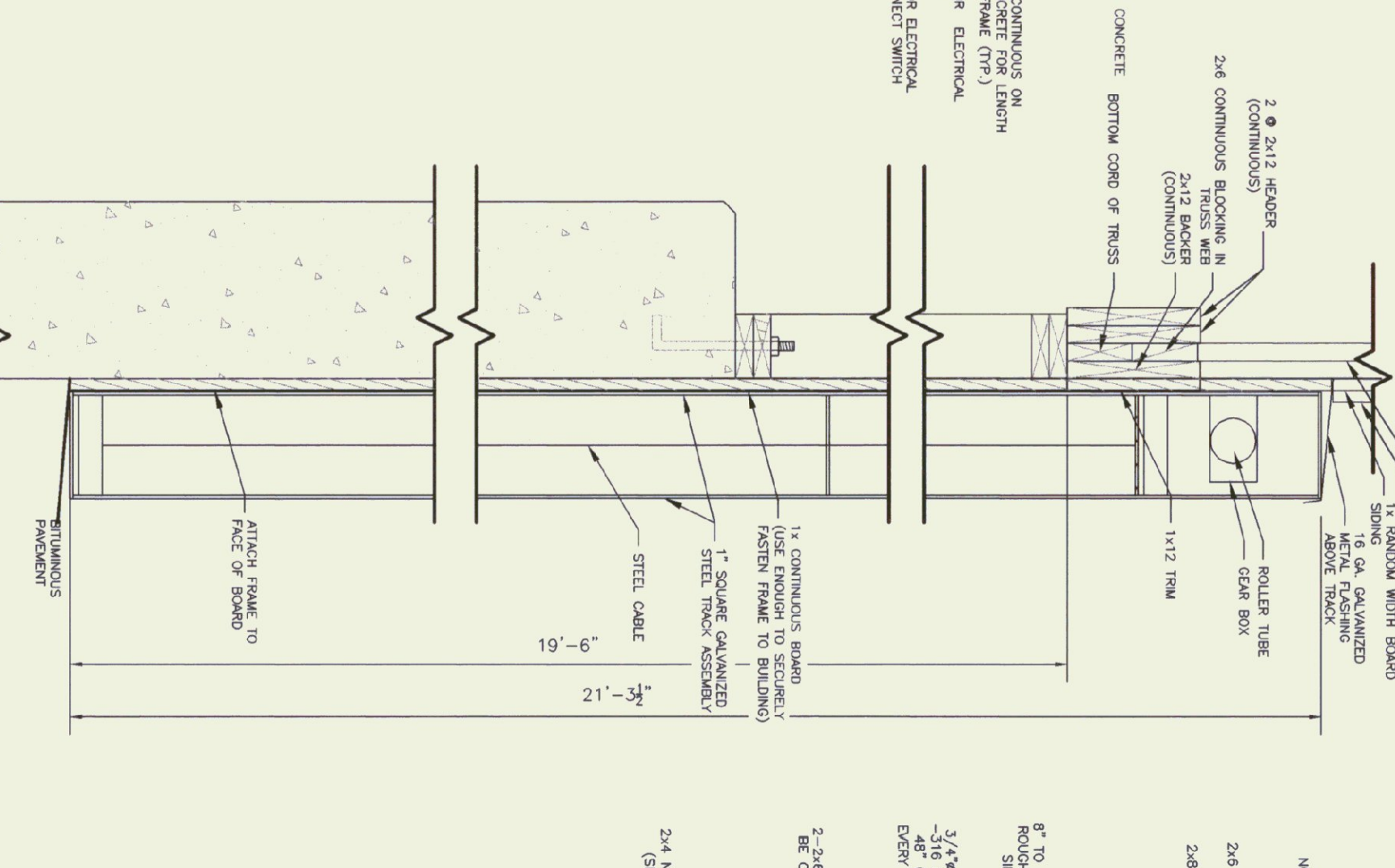
ALL MATERIALS TO BE FURNISHED BY THE CONTRACTOR.
ALL CHANGED METAL, EXCEPT GALVANIZED, (CORNER ANGLES, DOOR GUIDES, BRACKETS, ETC.) SHALL BE PAINTED FLAT BLACK (2 MILS THICK, DRY, AND OVER RUST INHIBITING PRIMER).
ALL ELECTRICAL WORK SHALL COMPLY WITH N.E.C.
ALL FRAMING AND ROOFING & BATTERY SINKING MATERIALS SHALL BE FASTENED USING APPROPRIATELY SIZED GALVANIZED FASTENERS AND ACCORDING TO INDUSTRY STANDARDS.
ALL ROOFING WORK, BACK-FILL, WATERFALL, FLOOR MATERIAL, ETC. TO BE SUBMITTAL TO THE LUMP SUM BIDDING PROCESS.
ROOFING COLOR - IV GREEN (AHSR-DRAWN)

TRUSS NOTES:

TRUSS MANUFACTURER TO SUBMIT TO THE PROJECT ENGINEER A FULL SET OF ENGINEERED AND STAMPED DRAWINGS FOR APPROVAL PRIOR TO TRUSS MANUFACTURE.
TRUSS MANUFACTURER TO PROVIDE THE CONTRACTOR WITH ALL THE NECESSARY INSTRUCTIONS FOR PROPER TRUSS INSTALLATION, APPROVAL, BRACING, LIFTING, ETC.
TRUSS DESIGN IN ACCORDANCE WITH THE 1987 B.O.C.A. FOR VENTNOR MINIMUM LOADS:
LIVE - 40 P.S.F. - PER 1994 VENTNOR FIRE PROTECTION CODE
DEAD - 40 P.S.F. - AS CALCULATED FROM TRUSS AND ROOF MATERIALS AND IN ADDITION 5 P.S.F. ON BOTTOM CHORDS
WIND - 25 P.S.F.
DIAGONAL BRACING PER TRUSS MANUFACTURER AND PER MANUAL TRUSS BRACING DETAIL IN SPECIFICATIONS.

LUMBER NOTES:

FRAMING MEMBERS TO BE KILN DRIED CONIST GRADE SPOUCE S4S MAX 18% MOISTURE CONTENT.
PLATES & NAILERS IN CONTACT WITH CONCRETE TO BE CCA 0.40 PRESURIZED TREATED.
ROOFING & BATTERY SINKING TO BE WATERTIGHT ROUGH SAWN ECTION FR, SPOUCE, WHITE PINE, OR RED PINE.
ROOFING SINKING & SPOUCE TO BE FULL LENGTH (NO JOINTS). SPOUCE TO BE KILN DRIED TO MAXIMUM MOISTURE CONTENT BEFORE SHIP IS APPLIED.
ALL FASTENERS TO BE GALVANIZED.
GENERAL CONTRACTORS HAVE THE OPTION OF USING VENTNOR CONNECTIONS, INDUSTRIES FOR ROUGH-SAWN LUMBER.
CONTACT: STEVEN WAREFIELD
103 SO. MAIN ST., WINDSOR, VERMONT 05371-1031 TEL: 241-4419 FAX: 241-5914



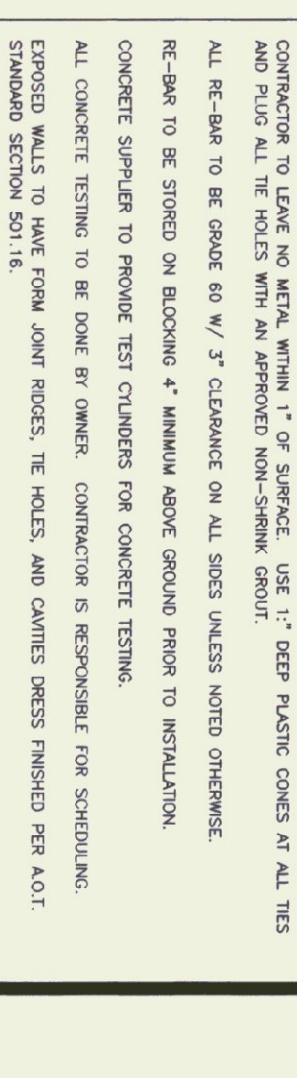
CURTAIN TRACK & GUIDE DETAIL
SCALE 1" = 1'-0"

FINISH NOTES:

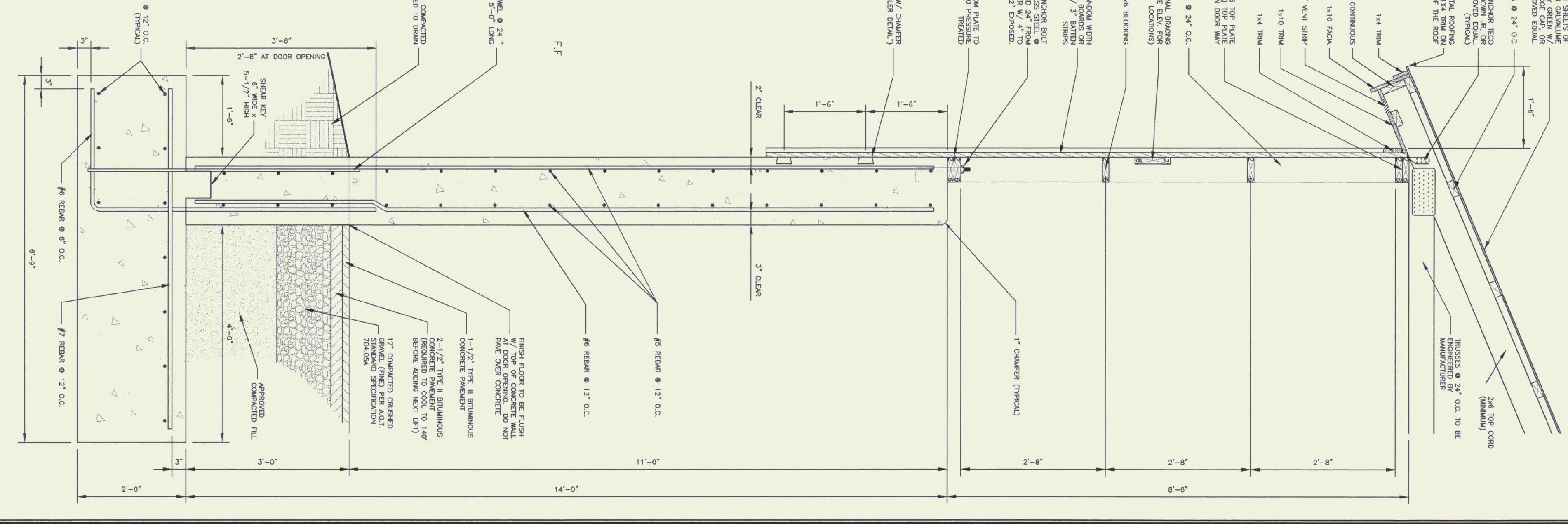
ROOFING COLOR - IV GREEN (AHSR-DRAWN)
ALL BOARDS & BATTENS TO BE STAINED WITH ONE COAT ON ALL SURFACES PRIOR TO INSTALLATION.
AFTER INSTALLATION EXTERIOR STAINING TO RESERVE ONE (1) ADDITIONAL COAT OF STAIN, STAIN TO BE SHEENED UNLESS ORDERED BROWN OR EQUAL. FIRST COAT WILL BE SEMI-TRANSPARENT & THE SECOND COAT WILL BE HIGH GLOSS STAIN.

CONCRETE NOTES:

CONCRETE TO BE CLASS "B" PER A.O.T. STANDARD SPECIFICATION TABLE 501.0.4 WITH 5# ± 1# AIR ENHANCER AND 2"-4" SLUMP.
1/2" V-CORNS IN EXPOSED FACE OF CONSTRUCTION JOINTS.
GALVANIZED I-BEAM CAST INTO WALL CORNERS AT FLOOR OPENINGS.
RE-PAIR TO BE CONTINUOUS THROUGH CONSTRUCTION JOINTS.
NO CONSTRUCTION OR EXPANSION JOINTS REQUIRED IN FOOTINGS.
CONTRACTOR TO LAKE NO METAL WITHIN 1" OF SURFACE. USE 1" DEEP PLASTIC CONES AT ALL TIES AND PLUG ALL THE HOLES WITH AN APPROVED NON-SINKING GROUT.
ALL RE-BAR TO BE GRADE 60 W/ 2" CLEARANCE ON ALL SIDES UNLESS NOTED OTHERWISE.
RE-BAR TO BE STORED ON BLOOMING 1" MINIMUM ABOVE GROUND PRIOR TO INSTALLATION.
CONCRETE SUPPLIER TO PROVIDE TEST CYLINDERS FOR CONCRETE TESTING.
ALL CONCRETE TESTING TO BE DONE BY OWNER. CONTRACTOR IS RESPONSIBLE FOR SCHEDULING STANDARD SECTION 501.16.
EXPOSED WALLS TO HAVE FORM JOINT RECESSES, THE RECESSES AND CHANGES DRESS FINISHED PER A.O.T. STANDARD SECTION 501.16.
WALL FORMS SHALL BE LEFT IN PLACE FOR 72 HOURS MINIMUM.
FOOTING FORMS SHALL REMAIN IN PLACE FOR 24 HOURS MINIMUM.
CONCRETE CURING SHALL FOLLOW IMMEDIATELY AFTER REMOVAL PER A.O.T. STANDARD 501.17.
WATER CURING WILL BE REQUIRED, UNLESS ALTERNATE MEANS OF CURING IS APPROVED, IN WRITING, BY THE PROJECT ENGINEER.



WALL SECTION (TYP.)
SCALE: 3/4" = 1'-0"



TYPICAL OF 2
SCALE: 3/4" = 1'-0"