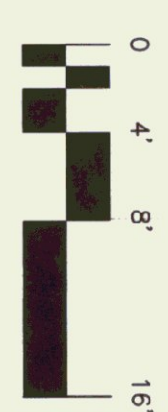


MAIN LEVEL PLAN

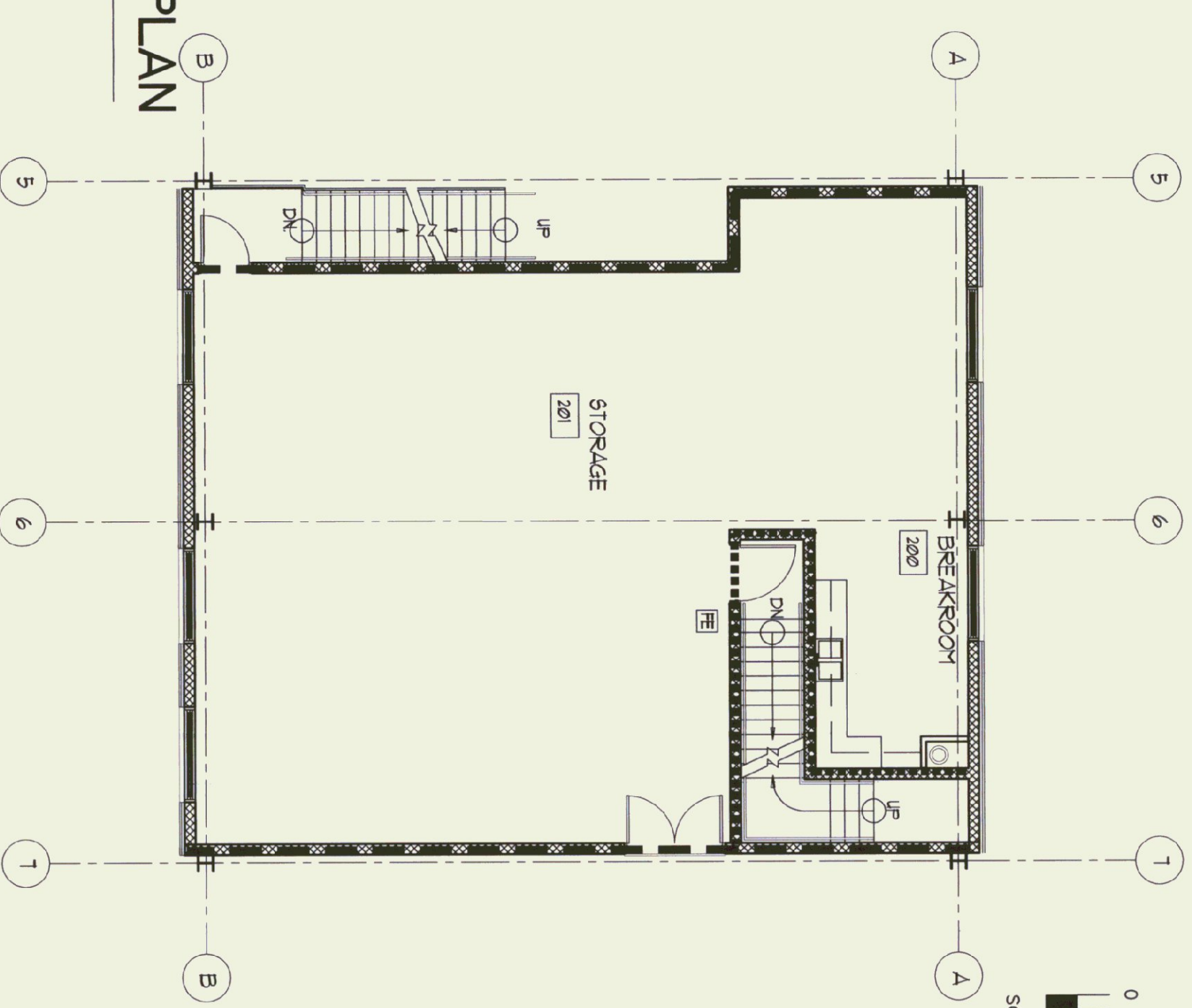
1/8" = 1'-0"



SCALE: 1/8" = 1'-0"

UPPER LEVEL PLAN

1/8" = 1'-0"



BOCA BUILDING REQUIREMENTS - 1996 EDITION

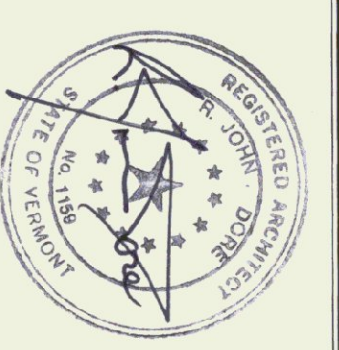
OCCUPANCY TYPE: B - STORAGE, ORDINARY HAZARD
 CONSTRUCTION TYPE: 2C, UNPROTECTED
 BASE HEIGHT AND AREA LIMITATIONS
 2 STORIES AT 30'
 8400 SF
 ALLOWED AREA INCREASE
 DESIGNED AREA
 STREET FRONTAGE
 STREET FRONTAGE PERMITS
 33% ACCESSIBLE PERIMETER
 28X 8400 SF = 2352 SF
 TOTAL ALLOWED AREA
 8400 SF + 2352 SF = 10752 SF

NFPA 101 BUILDING REQUIREMENTS - 1997 EDITION

CLASSIFICATION - STORAGE, ORDINARY HAZARD
 EXITS REQUIRED - MIN 2 REQUIRED
 MAX TRAVEL DISTANCE TO EXITS 200 FEET
 DEAD END CORRIDORS NOT EXCEED 50 FEET
 COMMON PATH FOR ORDINARY HAZARD 50 FEET
 CLASS 1/4 FINISH REQUIRED
 DESIGN FLOOR LOAD OF MEZZANINE = 75 PSF

LEGEND

- TWO HOUR FIRE SEPARATION WALL
- ONE HOUR FIRE SEPARATION WALL
- AOT SUPPLIED FIRE EXTINGUISHERS



AGENCY OF TRANSPORTATION
 HIGHGATE MAINTENANCE FACILITY
 HIGHGATE VERMONT



STATE OF VERMONT
 DEPARTMENT OF BUILDINGS
 AND GENERAL SERVICES
 AGENCY OF ADMINISTRATION
 MONTPELIER, VERMONT



D&W
 DORE AND WHITTIER, INC.
 Architects • Project Managers

1795 WILLISTON RD. STE. 5
 S. BURLINGTON, VT 05403
 Phone: (817) 471-2297
 Fax: (817) 471-2516

REVISIONS
SCALE: 1/8" = 1'-0"
DATE: 9/24/01
DRAWN BY: <i>AMD</i>
APPR. BY: <i>AMD</i>

HIGHGATE
 MAINTENANCE
 GARAGE

CODE PLANS

A-0.1

16 OF 37