

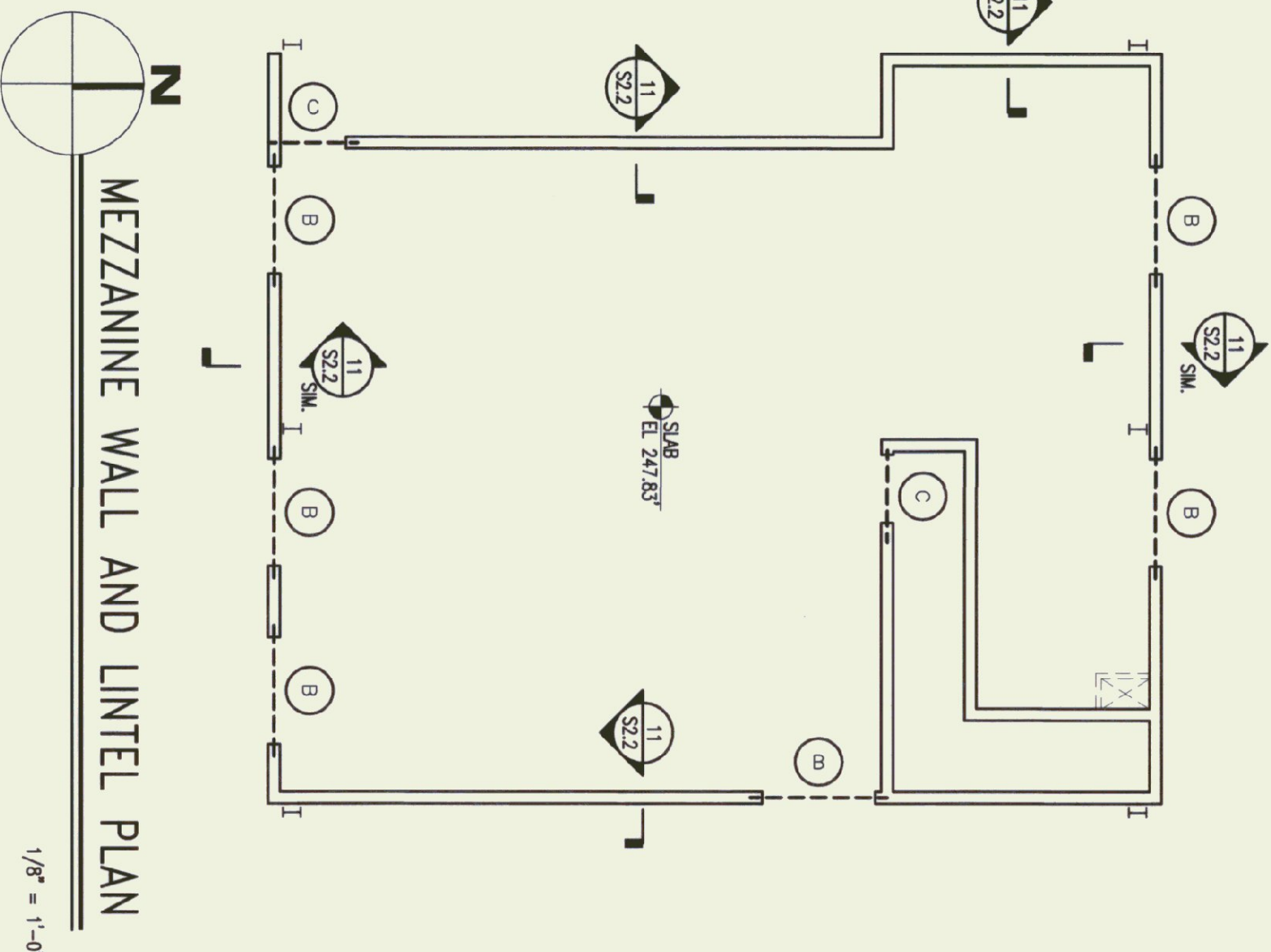
MAIN LEVEL WALL AND LINTEL PLAN
 1/8" = 1'-0"



1/8" = 1'-0"

NOTES:

- 1) CMU WALLS (FULLY GROUT ALL REINFORCED CORES)
 EXTERIOR WALLS: 8" CMU WITH #5'S AT 24" O.C.
 NOTE: CMU WALL SECTIONS BETWEEN GARAGE DOORS TO HAVE #5'S IN EACH CORE
 INTERIOR WALLS: 8" CMU WITH #5'S AT 24" O.C.
 NOTE: CMU WALL SECTIONS BETWEEN GARAGE DOORS TO HAVE #5'S IN EACH CORE
 (SEE ARCHITECTURAL DRAWINGS FOR LOCATION OF WALL THRESH.)
- 2) INSTALL CONTINUOUS BOND BEAM AT MIDDLE OF WALL HEIGHT AND TOP OF ALL WALLS WITH (2) #4'S CONTINUOUS AND STANDARD W/D BAR-D-WALL TRUSS REINFORCEMENT
 GROUT FILL ALL CORES AND ALL SPACES PER MANUFACTURER'S DIRECTIONS.
- 3) CMU WALL CONTROL JOINTS TO BE LOCATED AT 25'-0" o.c. MAX.
- 4) LINTELS IN MASONRY WALL OPENINGS:
 - A) LINTEL "A" - SEE DETAIL 6/SZ2
 - B) LINTEL "B" - SEE DETAIL 6/SZ2
 - C) LINTEL "C" - SEE DETAIL 6/SZ2
 - D) LINTEL "D" - SEE DETAIL 5/SZ2
- 5) MEZZANINE SLAB: 8" PRE-CAST HOLLOW CORE SLAB WITH 2" CONCRETE TOPPING.
 TOPPING TO HAVE FIBROUS CONCRETE REINFORCEMENT AS MANUFACTURED BY REBERSON COMPANY
 OR APPROVED EQUIVALENT AND FIBROUS CONCRETE REINFORCEMENT AT A RATE OF 1.3 lbs. PER CUBIC YARD
 OF CONCRETE PER MANUFACTURER'S INSTRUCTIONS. TOP OF TOPPING ELEVATION = TOP OF SLAB ELEV. PROVIDED ON PLAN.
 HOLLOW CORE SLAB TO BE DESIGNED FOR A LIVE LOAD CAPACITY OF 125 psf AND MAXIMUM SPAN OF 27'-0"
- 6) TOP OF EXTERIOR CMU WALLS AND EAST & WEST MEZZANINE CMU WALLS TO HAVE GROUT FILL WITH
 DIAPHRAGM STEEL PLATE (SEE DETAIL 4/SZ2). TOP OF DIAPHRAGM STEEL PLATE ELEVATION TO BE
 UNDERSIDE OF ROOF DECK (NOTE: TOP OF WALLS ON LINES "1" AND "11" AND EAST & WEST MEZZ. ARE SLOPING).



MEZZANINE WALL AND LINTEL PLAN
 1/8" = 1'-0"



1/8" = 1'-0"

ENGINEERING VENTURES INC.
 908 Flynn Avenue, Suite 2A
 Burlington, VT 05401
 Tel: 802.863.8856
 Fax: 802.863.8808
 EngineeringVentures.com

D&W
 DORE AND WHITTIER, INC.
 Architects • Project Managers
 1795 WILLISTON RD, STE 5
 S. BURLINGTON, VT 05403
 Phone: (802) 863-1428
 Fax: (802) 863-6955
 1400 HANCOCK STREET
 QUINCY, MA 02169
 Phone: (617) 471-2897
 Fax: (617) 471-2516



STATE OF VERMONT
 DEPARTMENT OF BUILDINGS
 AND GENERAL SERVICES
 AGENCY OF ADMINISTRATION
 MONTPELIER, VERMONT



AGENCY OF TRANSPORTATION
 HIGHGATE MAINTENANCE FACILITY
 HIGHGATE VERMONT

REVISIONS

SCALE: AS NOTED
 DATE: 9/24/01
 DRAWN BY: WP/MJ
 APPR. BY: WP/KW

HIGHGATE
 MAINTENANCE
 GARAGE
 WALL
 PLAN

S-1.1

10 OF 37

