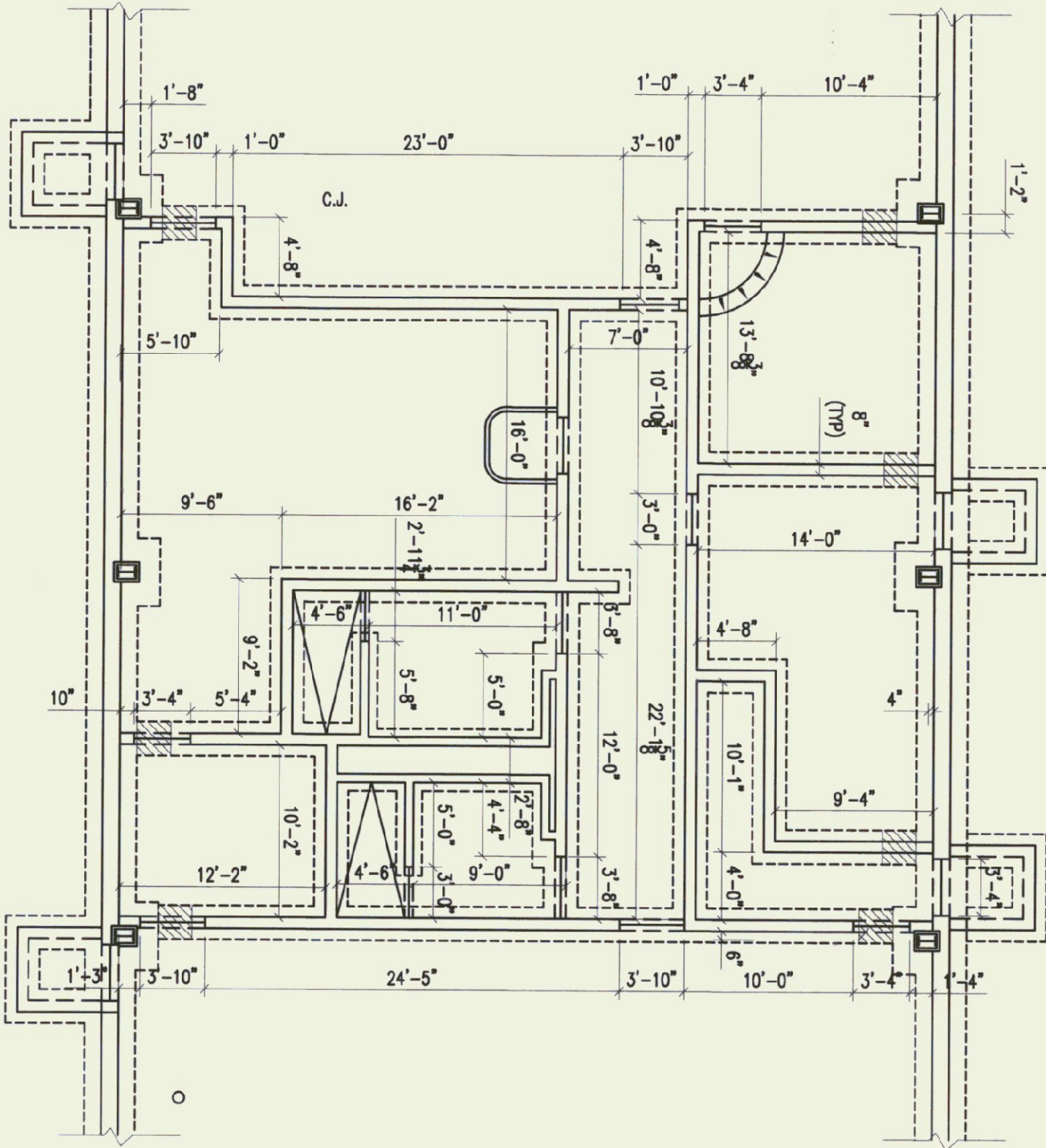


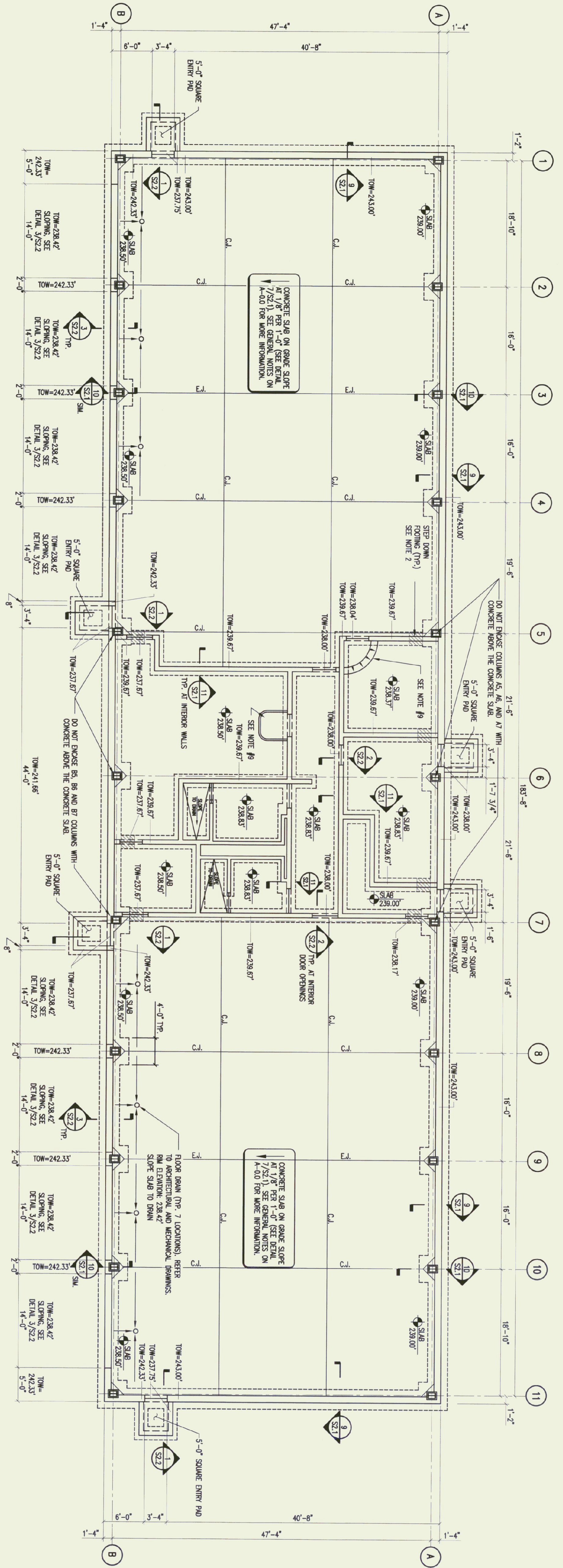
FOUNDATION PARTIAL PLAN - CORE AREA

1/8" = 1'-0"



FOUNDATION PLAN

1/8" = 1'-0"



NOTES:

- 1) TOP OF FOOTING AT EXTERIOR WALL [234.50']
- 2) TOP OF FOOTING AT INTERIOR WALL [238.50']
- 3) TOP OF REFS ON COLUMN LINE 'A' TO BE AT ELEVATION 238.17'
- 4) ALL COLUMNS TO BE W/2x4x4.
- 5) ON GRADE CONCRETE SLABS IN PARKING AND MECHANICAL BAYS TO SLOPE DOWN AT 1/8" PER 1'-0" FROM REAR OF BUILDING, TO THE FRONT.
- 6) ON GRADE CONCRETE SLABS IN PARKING AND MECHANICAL BAYS TO HAVE IN SLAB INWARD HEADING SYSTEM, SEE MECHANICAL DRAWINGS.
- 7) C.I. - CONTROL JOINT, OR CONSTRUCTION JOINT, SEE DETAIL 6/S-21
- E.I. - EXPANSION JOINT, SEE DETAIL 6/S-21

BASIS OF DESIGN

BUILDING CODE: 1986 BOCA CODE

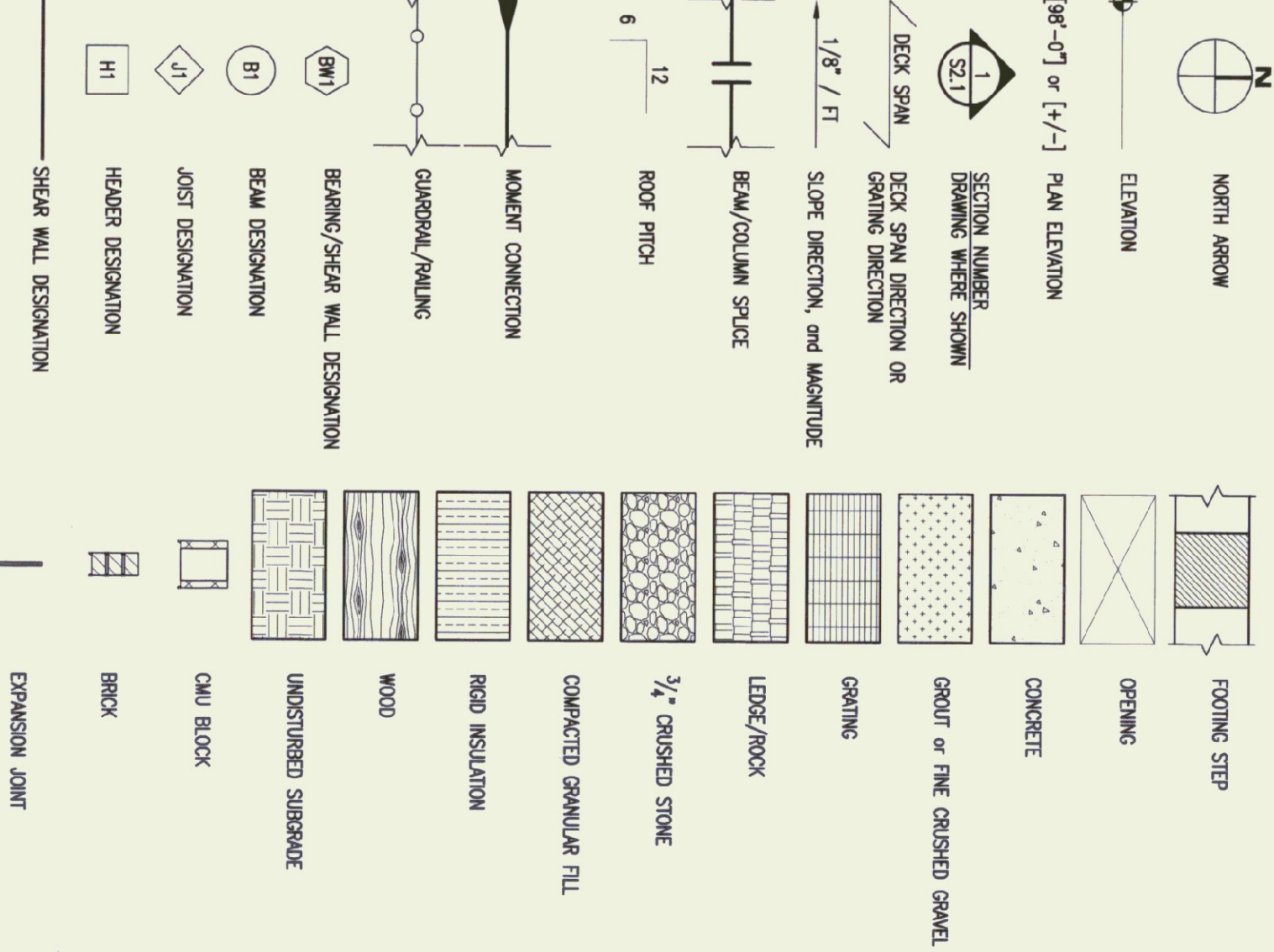
DEAD LOADS	20 psf
ROOF LOADS	20 psf
LIVE LOADS	40 psf
MEZANINE LIVE LOAD	125 psf
SNOW LOADS	40 psf
WIND LOADS	40 psf
EXPLOSIVE CATEGORY	II
EXPLOSIVE FACTOR	1.15
EXPLOSIVE CATEGORY	III
EXPLOSIVE FACTOR	0.15
SEISMIC PERFORMANCE CATEGORY	C
SEISMIC PERFORMANCE FACTOR	0.0833
ASSUMED SOIL BEARING CAPACITY	3000 psf

STRUCTURAL DRAWING LIST

- S1.0 FOUNDATION PLAN
- S1.1 WALL PLAN
- S1.2 ROOF FRAMING PLAN
- S2.1 STRUCTURAL DETAILS
- S2.2 STRUCTURAL DETAILS
- S3.1 STRUCTURAL DETAILS

DRAWING LEGEND

NOTE: NOT ALL SYMBOLS AND NOTATIONS USED



ABBREVIATIONS

AB	ANCHOR BOLT	NS	NEAR SIDE
AF	ABOVE FINISH FLOOR	OC	ON CENTER
AL	ALUMINUM	PF	PER DESIGNATION
BF	BOTTOM OF FOOTING	PL	PLATE
DMG	DRAWING	SS	STAINLESS STEEL
ELEV	ELEVATION	STD	STANDARD
EF	EACH FACE	TOC	TOP OF CONCRETE
ES	EACH SIDE	TOP	TOP OF FOOTING
EW	EACH WAY	TOS	TOP OF STEEL
EQ	EQUAL	TOSL	TOP OF SHEET
EX	EXISTING	TOW	TOP OF WALL
FJ	FOOTING DESIGNATION	TYP	TYPICAL
FND	FOUNDATION	UNO	UNLESS NOTED OTHERWISE
FS	FAR SIDE	VF	VERIFY IN FIELD
NIC	NOT IN CONTRACT		



ENGINEERING VENTURES INC
208 Flynn Avenue, Suite 2A
Burlington, VT 05401
Tel: 802.863.8388
Fax: 802.863.8388
EngineeringVentures.com

D&W
DORE AND WHITTIER, INC.
Architects • Project Managers
1785 WILLISTON RD, STE 5
S. BURLINGTON, VT 05603
Phone: (802) 863-1428
Fax: (802) 863-4955
1400 HANCOCK STREET
QUINCY, MA 02169
Phone: (617) 471-5297
Fax: (617) 471-2516

AGENCY OF TRANSPORTATION
HIGHGATE MAINTENANCE FACILITY
HIGHGATE VERMONT



STATE OF VERMONT
DEPARTMENT OF BUILDINGS
AND GENERAL SERVICES
AGENCY OF ADMINISTRATION
MONTPELIER, VERMONT



SCALE: AS NOTED
DATE: 9/24/01
DRAWN BY: WP/MJ
APPR. BY: WP/RW

REVISIONS

--	--	--

HIGHGATE
MAINTENANCE
GARAGE
FOUNDATION
PLAN
S-1.0
9 OF 37