

MEZZANINE LEVEL NEW WORK PLAN

SCALE: 1/8" = 1'-0"

HORIZONTAL SCALE IN FEET



KEYED NOTES:

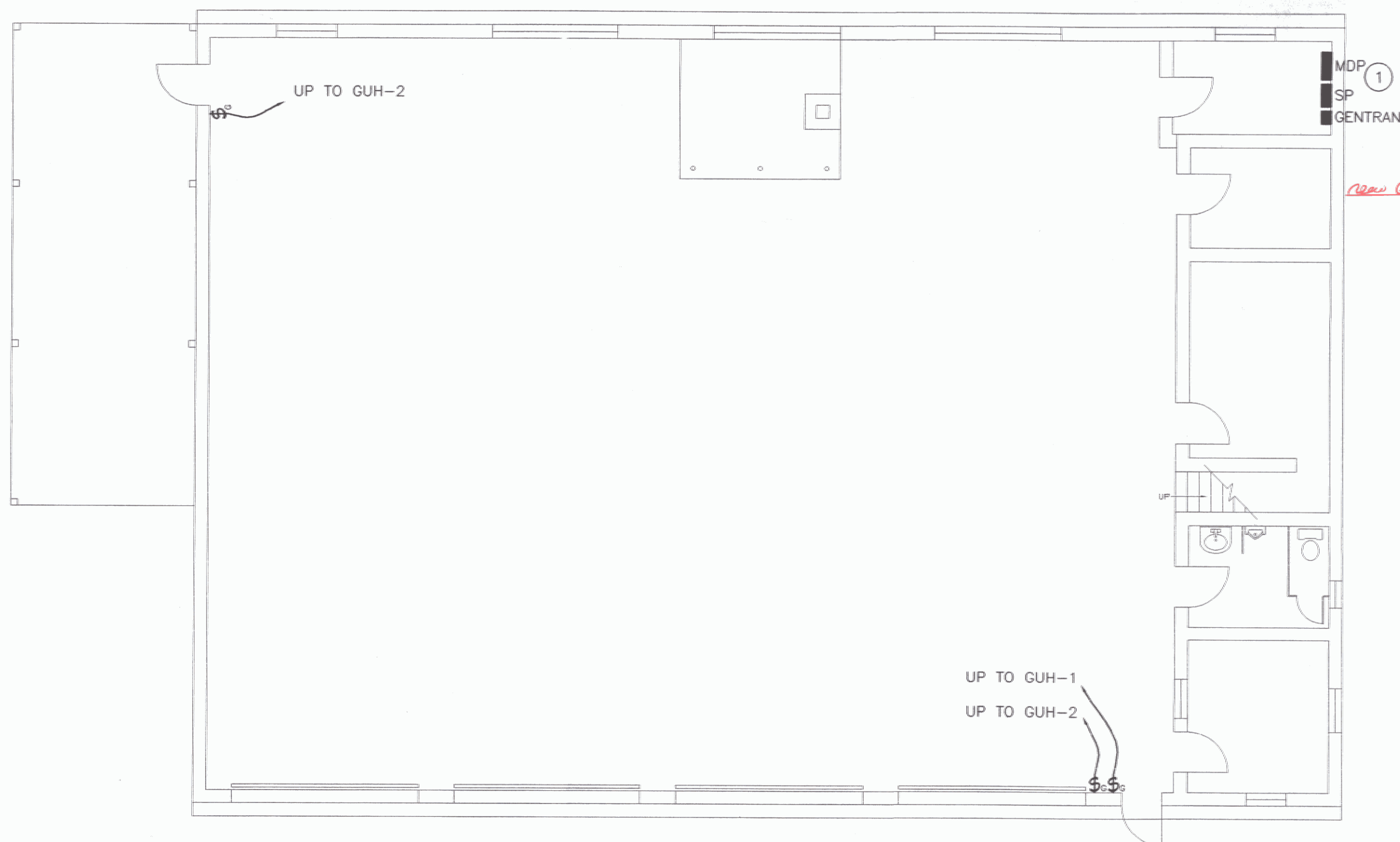
- ① THE EXISTING SUBPANEL "SP" IS CURRENTLY FED WITH A 2-POLE 100A BREAKER FROM PANEL MDP. THIS FEED FOR PANEL "SP" PASSES THRU THE XFER SWITCH. THE TRANSFER SWITCH IS NOT CONNECTED TO ANY OTHER SUPPLY. REMOVE THE XFER SWITCH, & REWIRE THE FEED TO PANEL "SP" FROM PANEL "MDP". REUSE THE EXISTING 100-AMP BREAKER & USE (3) #2 COPPER CONDUCTORS & A #4 GROUND. PROVIDE A NEUTRAL BAR IN PANEL "SP", & SEPARATE THE GROUNDS & NEUTRALS IN THIS PANEL. THE PANEL IS A 16-SPACE SQUARE D LOADCENTER.
- ② PROVIDE NEW 20A, 240V CIRCUIT & CIRCUIT BREAKER FROM PANEL SP FOR NEW GAS UNIT HEATER.
- ③ PROVIDE EMERGENCY SHUT-OFF SWITCHES FOR EACH GAS HEATER, SWITCH SHALL HAVE RED "GAS" PLATE. USE 2-POLE SWITCHES FOR 240V UNITS.

GENERAL NOTES:

- A. ANY PLACE WHERE THE CONTRACTOR PENETRATES, CUTS AND/OR REMOVES WALLS, CEILINGS, OR WOODWORK, CONTRACTOR IS TO REPLACE, PATCH AND PAINT FINISH SURFACES TO ORIGINAL FINISHES.
- B. FIELD VERIFY ALL DIMENSIONS BEFORE COMMENCEMENT OF WORK IS TO BEGIN. NOTIFY ENGINEER OF ANY ERRORS.
- C. REFER TO THE MECHANICAL PLANS FOR FINAL LOCATIONS OF EQUIPMENT. COORDINATE LOCATIONS OF ALL THE ELECTRICAL CONNECTIONS WITH MC PRIOR TO ELECTRICAL ROUGH-IN WIRING.
- D. EC TO PROVIDE AND INSTALL ALL DISCONNECT SWITCHES, MC TO PROVIDE ALL MOTOR STARTERS, EC TO INSTALL.

GENTRAN PANEL SCHEDULE

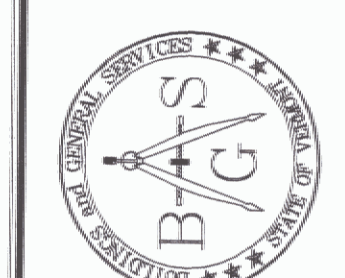
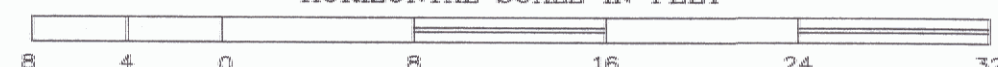
CKT NO.	KW LOAD	DESCRIPTION	BREAKER		BREAKER		DESCRIPTION	KW LOAD	CKT NO.
			P	AMP	AMP	P			
1	<E>	FUEL PUMP	1	15	15	1	SPARE		2
3	<E>	OVERHEAD DOOR	1	15	15	1	SPARE		4
5	0.7	GUH-3	1	15	15	1	LIGHTS	<E>	6
7	2.4	GUH-2	2	20	15	1	LIGHTS	<E>	8
9		(OLD WATER PUMP CKT)			15	1	OVERHEAD DOOR	<E>	10



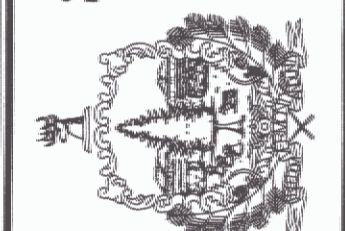
FIRST FLOOR NEW WORK PLAN

SCALE: 1/8" = 1'-0"

HORIZONTAL SCALE IN FEET



STATE OF VERMONT
 Department of Buildings
 and General Services
 Agency of Administration
 Montpelier, Vermont



Pearson & Associates
 MECHANICAL & ELECTRICAL ENGINEERS
 P.O. BOX 610 STOWE, VERMONT 05672
 TEL. (802) 253-9607 FAX. (802) 253-9290
 EMAIL: pearson@stowevt.net

AGENCY OF TRANSPORTATION
 NORTH HERO MAINTENANCE
 GARAGE & OFFICE RENOVATIONS
 NORTH HERO VERMONT

REVISIONS
 SCALE: AS SHOWN
 DATE: DEC. 2004
 DRAWN BY: ASG
 APPR. BY: EEP

AGENCY OF TRANSPORTATION
 GARAGE & OFFICES
 ELECTRICAL NEW WORK & DETAILS

