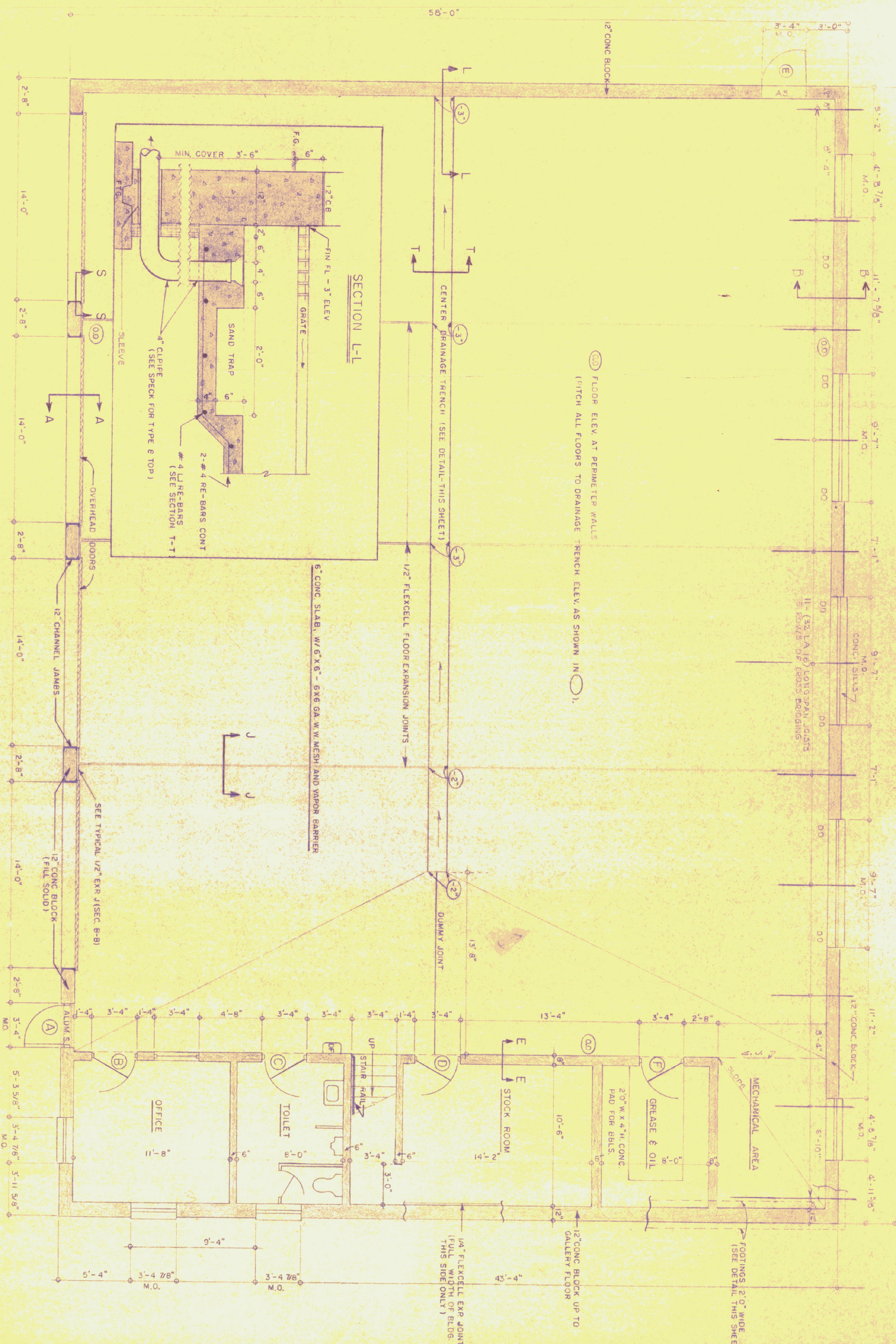
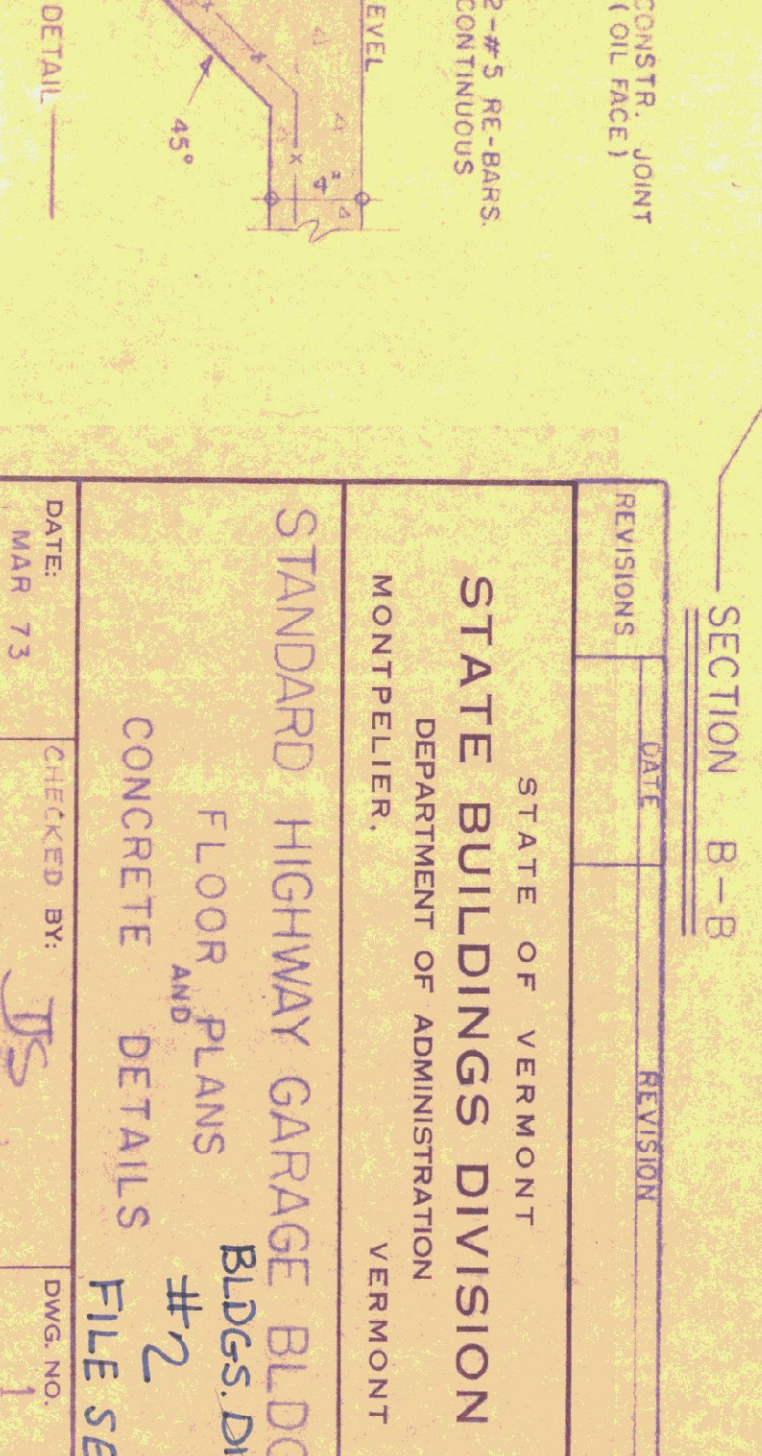
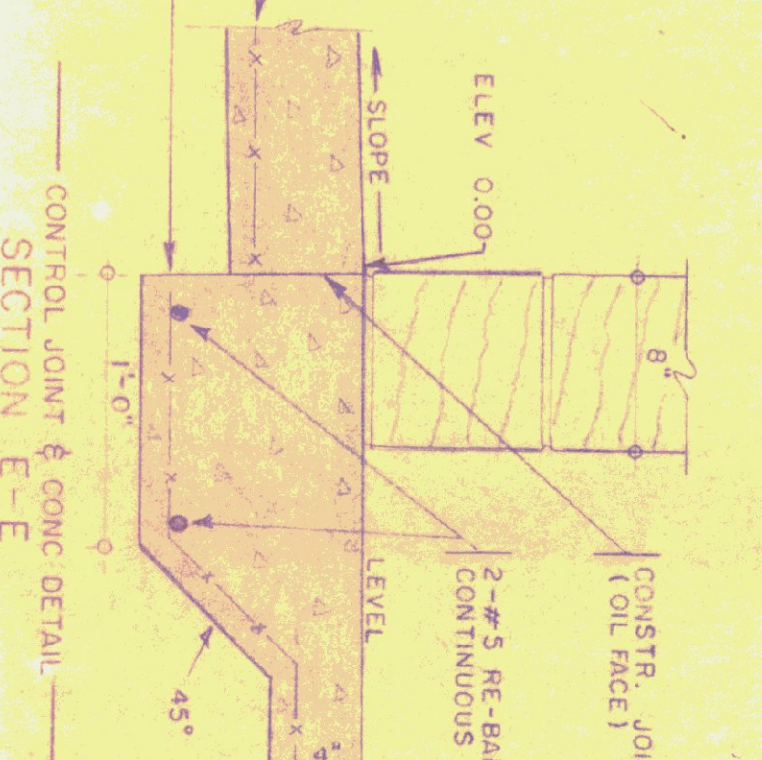
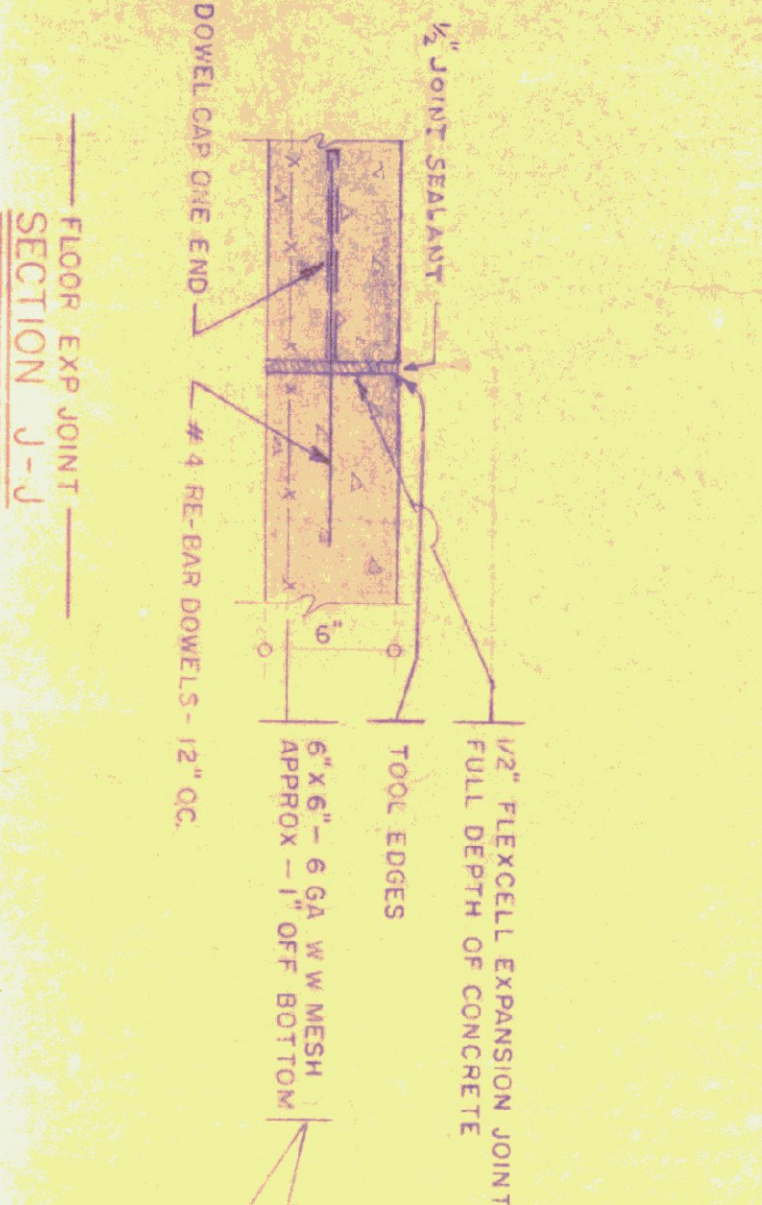
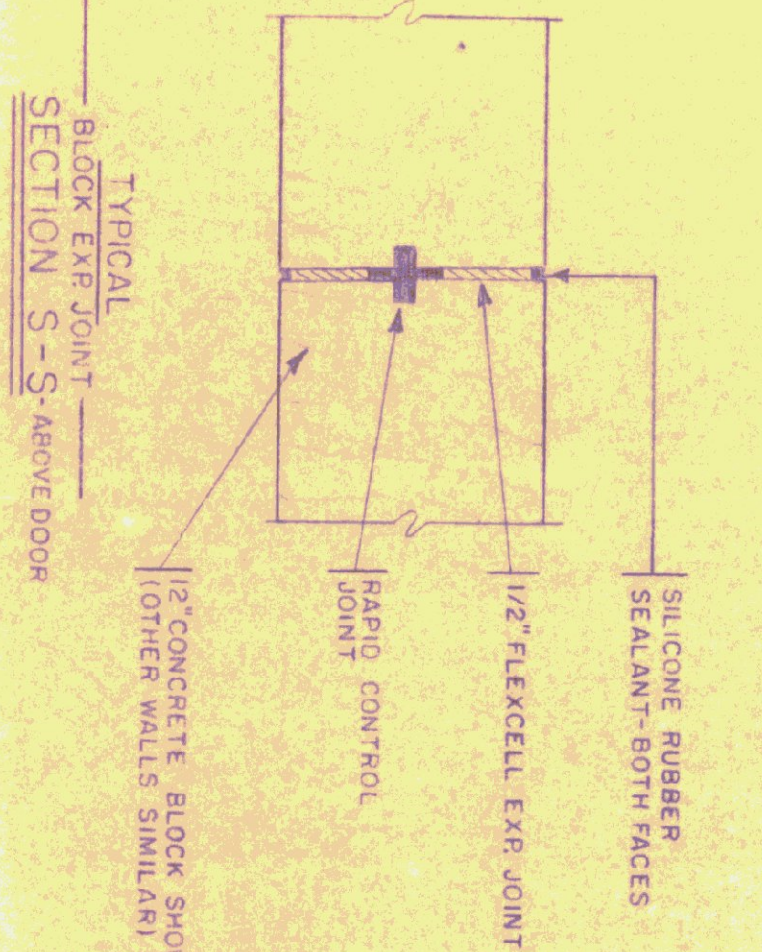
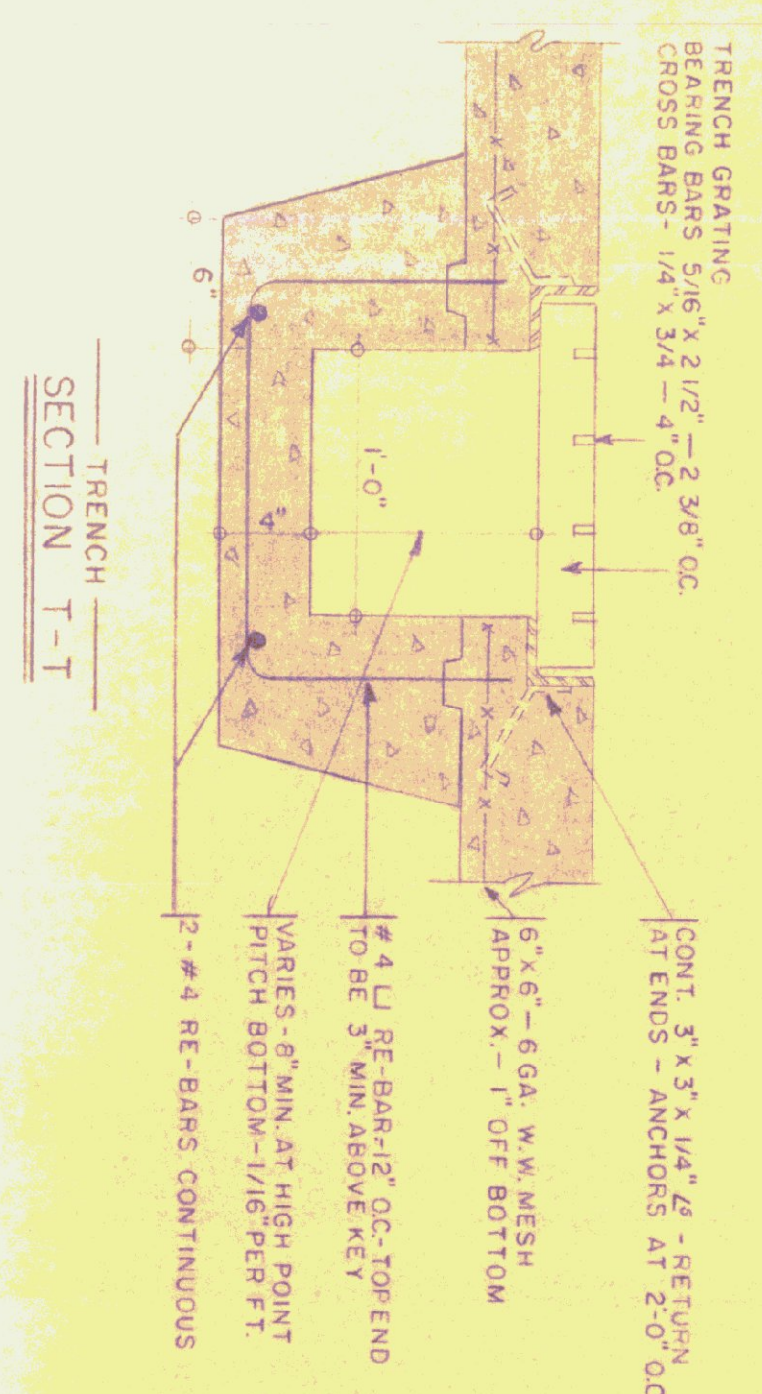


FOUR-BAY DIMENSION: 85'-4" (FOR EACH ADDED BAY ADD 16'-0")



**PLAN**  
SCALE 1/4" = 1'-0"  
SECTIONS SCALE 1/2" = 1'-0"



**GENERAL NOTES**

ALL CONCRETE SHALL BE 3000 LB PSI AT 28 DAYS / MAX SLUMP OF 4"  
ALL EXPOSED CONCRETE WALLS SHALL BE RIBBED.  
CONSTRUCTION JOINTS FOR WALLS TO HAVE 1/2" V-JT IN EXPOSED FACE.  
ALL CONCRETE TO BE CURED, SWG TO BE COVERED WITH SISALKRAFT.  
EXPANSION JOINTS TO HAVE TOoled EDGES.

STATE OF VERMONT DEPARTMENT OF ADMINISTRATION VERMONT	
STANDARD HIGHWAY GARAGE BLDG. FLOOR PLANS CONCRETE DETAILS	
#2 FILE SET	
DATE: MAR 73	CHECKED BY: JS
DRAWN BY: STAFFORD	APPROVED BY: [Signature]
DWG. NO. 1	OF