



- 1) COMPACTED BACKFILL
- 2) PIPE BEDDING - COMPACTED SAND, GRAVEL OR CRUSHED STONE.
- 3) 30" MINIMUM
- 4) 6" MINIMUM
- 5) MARKING TAPE - SEE SPECIFICATIONS
- 6) MAINTAIN MIN. 12" SEPARATION BETWEEN CONDUITS (TYP)

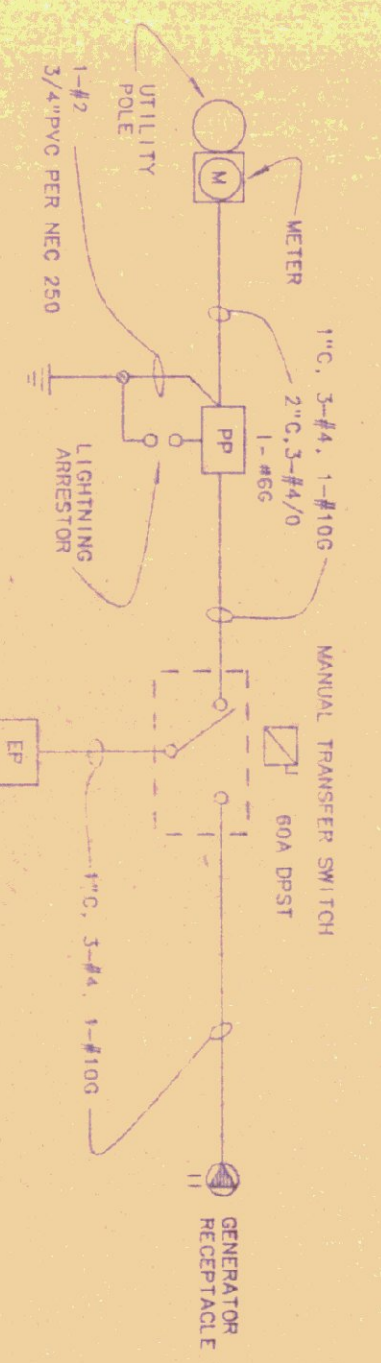
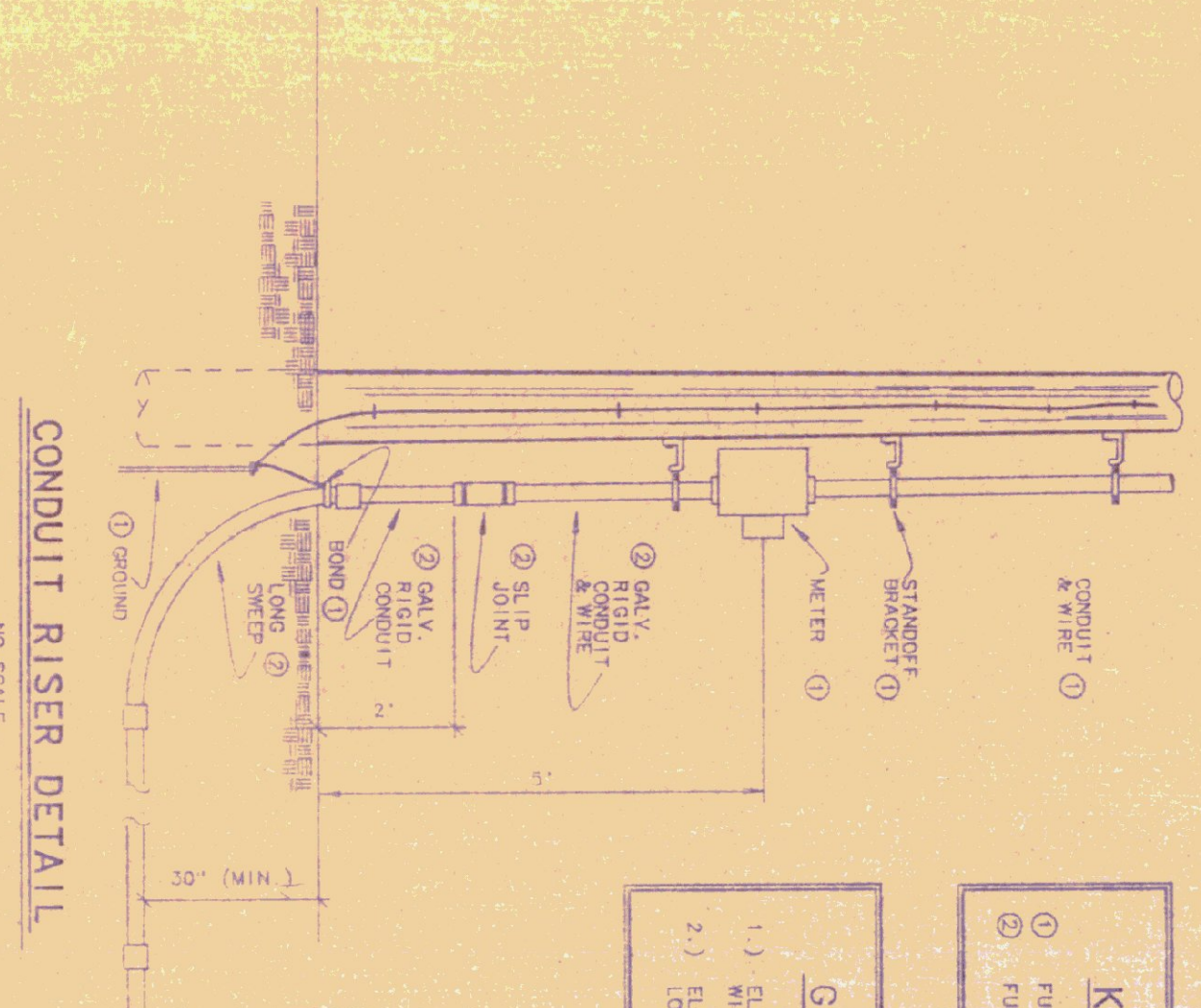
UNDERGROUND SERVICE TRENCH DETAIL
NO SCALE

KEYED NOTES

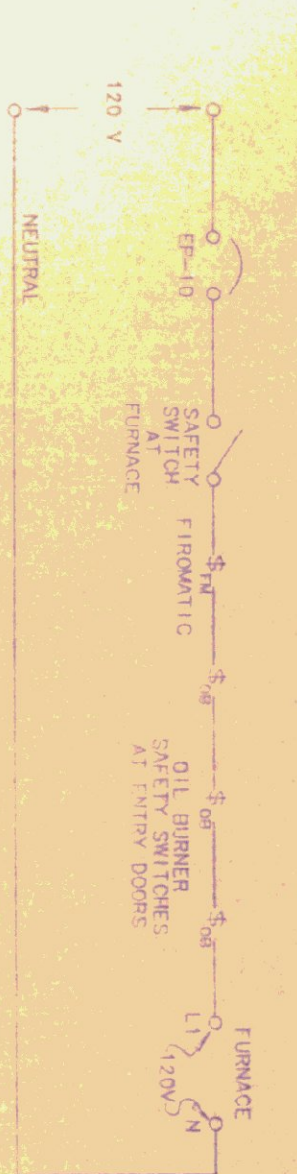
1) FINISHED & INSTALLED BY ENSBURG FALLS WATER & LIGHT DEPT.
FURNISHED AND INSTALLED BY E.C.

GENERAL NOTES

1.) ELECTRICAL CONTRACTOR TO CO-ORDINATE SERVICE INSTALLATION WITH ENSBURG FALLS WATER & LIGHT DEPT.
2.) ELECTRICAL CONTRACTOR PROVIDES CONDUIT & WIRE TO LONG SIDE OF BOX.



ELECTRIC SERVICE ONE LINE DIAGRAM
NO SCALE



OIL BURNER ONE LINE DIAGRAM
NO SCALE

PANEL DESIGNATORS

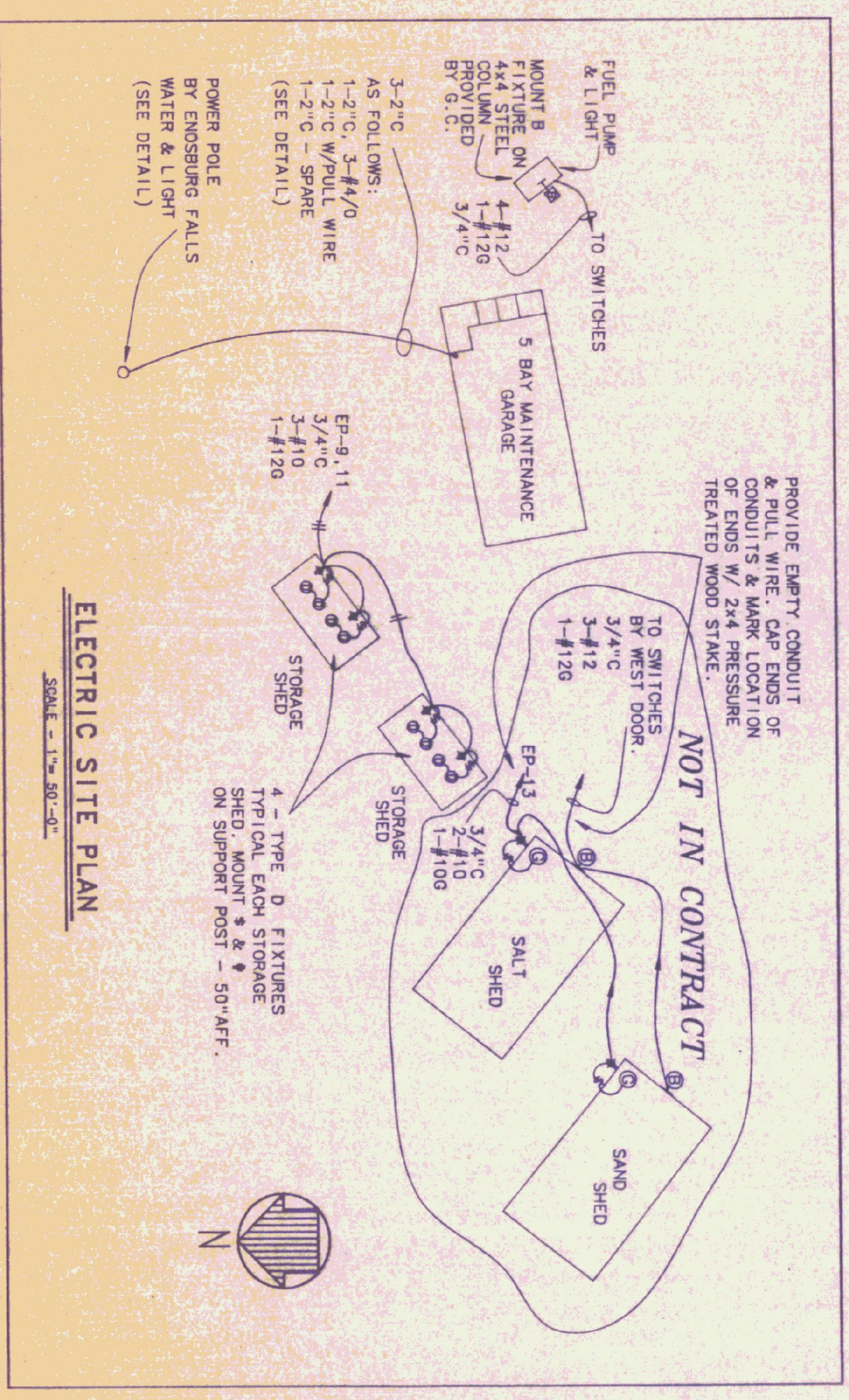
PANEL: PP MOUNTING: SURFACE MAINS: 200 AMP, 2 P, MAIN CIRCUIT BREAKER, 120/240 V, 1 PH, 3W BRANCHES: AS SHOWN CONNECTED LOAD: 35 KW

| CKT NO. | KW LOAD | DESCRIPTION | BREAKER | | BREAKER | | DESCRIPTION | KW LOAD | CKT NO. |
|---------|---------|----------------|---------|-----|---------|-----|-----------------|---------|---------|
| | | | P | AMP | P | AMP | | | |
| 1 | 1.0 | WATER HEATER | 1 | 20 | 1 | 20 | LIGHTING | 1.4 | 2 |
| 3 | .5 | WOOD FURNACE | 2 | 20 | 2 | 20 | AIR COMPRESSION | 5 | 4 |
| 5 | | | | | | | | | 6 |
| 7 | .2 | CING. PUMP | 1 | 15 | 2 | 30 | EXHAUST FAN | 1.5 | 8 |
| 9 | 10.0 | WELDING OUTLET | 2 | 60 | | | | | 10 |
| 11 | | | | | 20 | 1 | RECEPTACLES | 1.2 | 12 |
| 13 | .5 | RECEPTACLES | 1 | 20 | 20 | 1 | RECEPTACLES | 1.2 | 14 |
| 15 | .5 | RECEPTACLES | 1 | 20 | 20 | 1 | RECEPTACLES | .7 | 16 |
| 17 | 1.4 | RECEPTACLES | 1 | 20 | 20 | 1 | SPARE | | 18 |
| 19 | 9.6 | PANEL, EP | 2 | 60 | 20 | 1 | SPARE | | 20 |
| 21 | | SPACE | | | | | SPACE | | 22 |
| 23 | | SPACE | | | | | SPACE | | 24 |
| 25 | | SPACE | | | | | SPACE | | 26 |
| 27 | | SPACE | | | | | SPACE | | 28 |
| 29 | | SPACE | | | | | SPACE | | 30 |
| 31 | | SPACE | | | | | SPACE | | 32 |
| 33 | | SPACE | | | | | SPACE | | 34 |
| 35 | | SPACE | | | | | SPACE | | 36 |
| 37 | | SPACE | | | | | SPACE | | 38 |
| 39 | | SPACE | | | | | SPACE | | 40 |

PANEL DESIGNATORS

PANEL: EP MOUNTING: SURFACE MAINS: 60 A, 2 P, MCB, 120/240 V, 1 PH, 3 W BRANCHES: AS SHOWN CONNECTED LOAD: 9.6 KW

| CKT NO. | KW LOAD | DESCRIPTION | BREAKER | | BREAKER | | DESCRIPTION | KW LOAD | CKT NO. |
|---------|---------|-----------------|---------|-----|---------|-----|-------------------------------|---------|---------|
| | | | P | AMP | P | AMP | | | |
| 1 | .6 | LIGHTING | 1 | 20 | 20 | 1 | RECEPTACLES | 1.0 | 2 |
| 3 | .8 | LIGHTING | 1 | 20 | 40 | 1 | OVERHEAD DOORS | 1.5 | 4 |
| 5 | .3 | OUTSD. LIGHTING | 1 | 20 | 30 | 1 | OVERHEAD DOORS | 1.0 | 6 |
| 7 | | SPARE | 1 | 20 | 20 | 1 | OIL TRANS. PUMP | .5 | 8 |
| 9 | .6 | STORAGE SHED#1 | 1 | 20 | 20 | 1 | OIL FURNACE | .5 | 10 |
| 11 | .6 | STORAGE SHED#2 | 1 | 20 | 20 | 1 | GAS PUMPLIGHT (NEUTRAL DISC.) | 1.3 | 12 |
| 13 | .2 | SALT/SAND SHED | 1 | 20 | 20 | 1 | SPACE | | 14 |
| 15 | .2 | SALT/SAND SHED | 1 | 20 | 20 | 1 | SPACE | | 16 |
| 17 | | SPACE | 1 | 20 | 20 | 1 | SPACE | | 18 |
| 19 | | SPACE | | | | | SPACE | | 20 |
| 21 | | SPACE | | | | | SPACE | | 22 |
| 23 | | SPACE | | | | | SPACE | | 24 |



ELECTRIC SITE PLAN
SCALE: 1"=30'-0"

ENSURBURG - AS BUILTS

Pearson & Associates
MECHANICAL & ELECTRICAL ENGINEERS
P.O. BOX 610 STOWE, VERMONT 05672
TEL. (802) 253-9607 FAX (802) 253-9290

STATE OF VERMONT
DEPARTMENT OF STATE BUILDINGS
AGENCY OF ADMINISTRATION
MONTPELIER VERMONT
SITE PLAN, SCHEDULES & DETAILS
VERMONT AGENCY OF TRANSPORTATION
5 BAY MAINTENANCE GARAGE
ENSURBURG FALLS
DATE: 08/03/91 SCALE: AS SHOWN REV. 1: E-3
DRAWN BY: B.W.M. APPROVED BY: 24 OF 24

