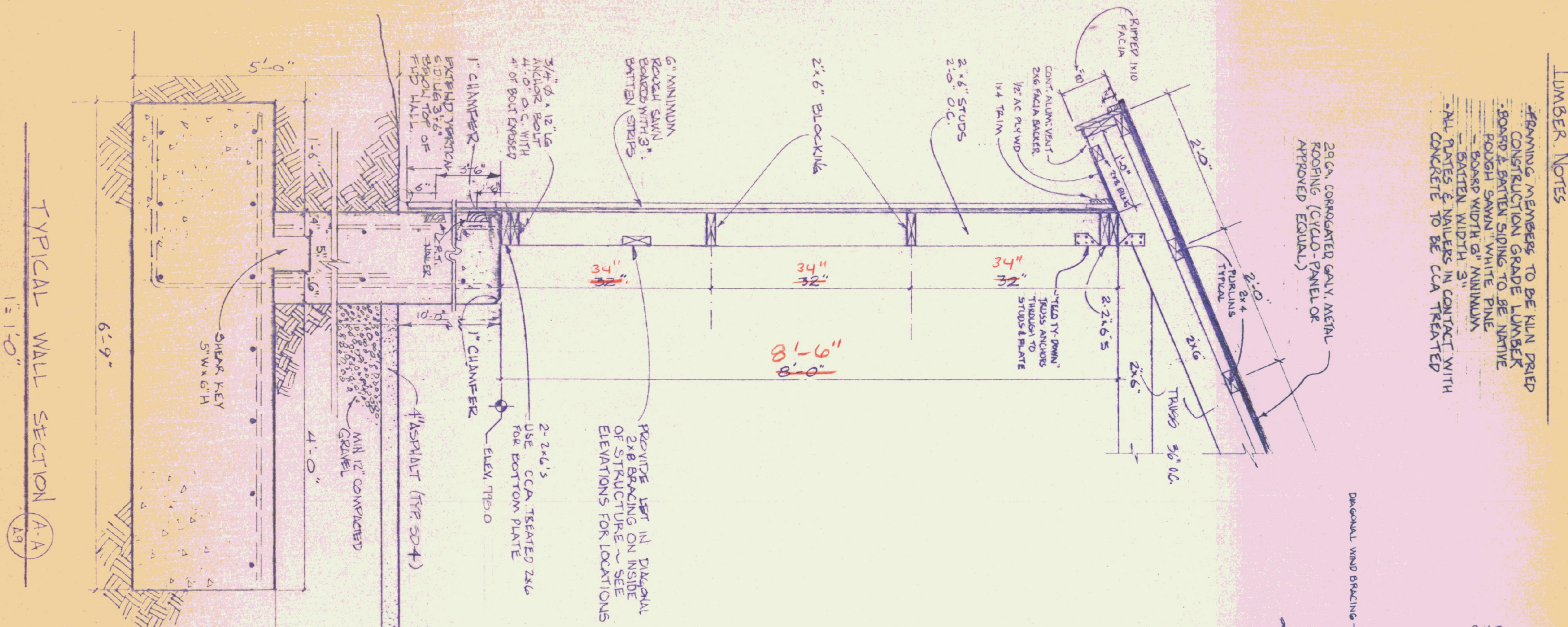


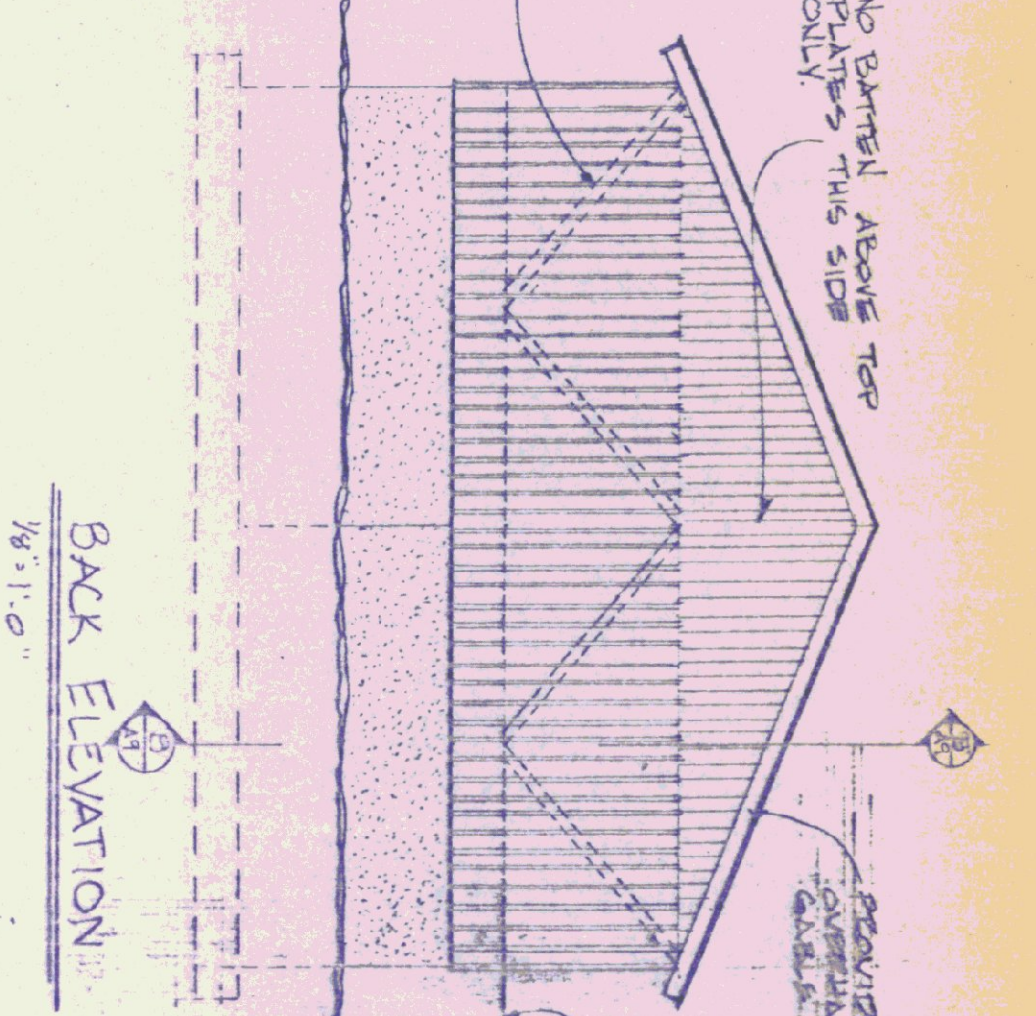
**LUMBER NOTES**

FRAMING MEMBERS TO BE KILN DRIED  
CONSTRUCTION GRADE LUMBER  
BOARD & BATTEN SIDING TO BE NATIVE  
ROUGH SAWN WHITE PINE  
- BATTEN WIDTH 3"  
- ALL PLATES & NAILERS IN CONTACT WITH  
CONCRETE TO BE CCA TREATED

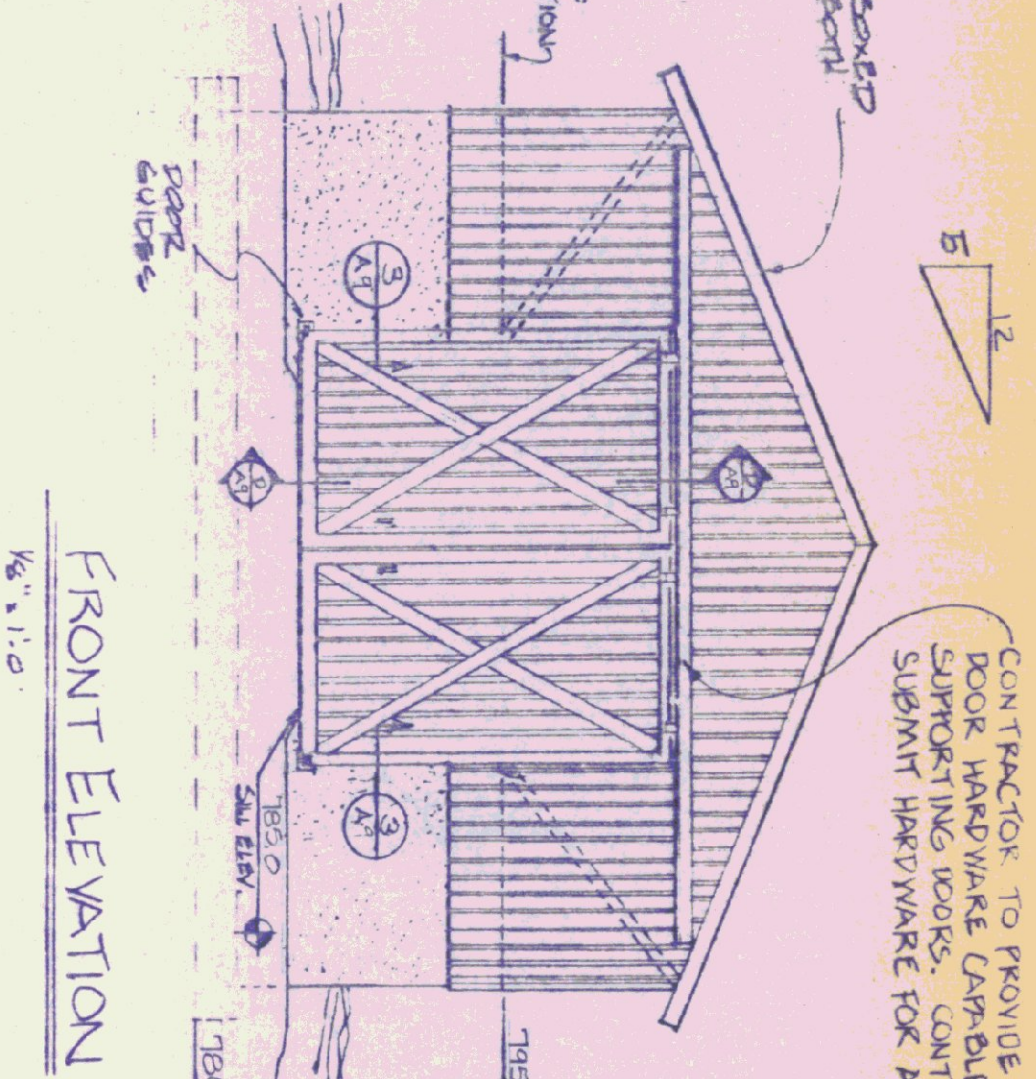
20 GA CORRUGATED GALV METAL  
ROOFING (CYCLO PANEL OR  
APPROVED EQUAL)



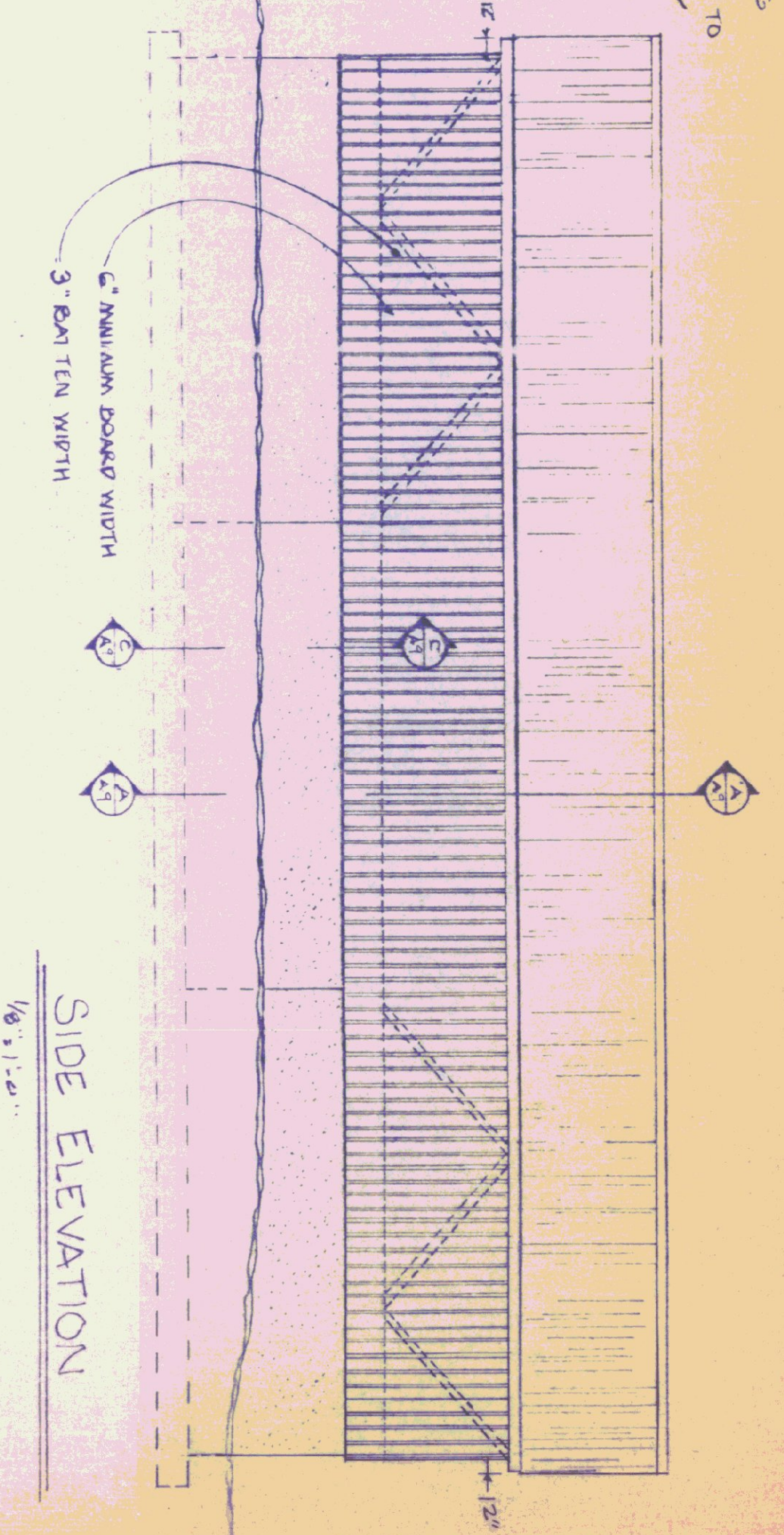
TYPICAL WALL SECTION A-A  
1" = 1'-0"



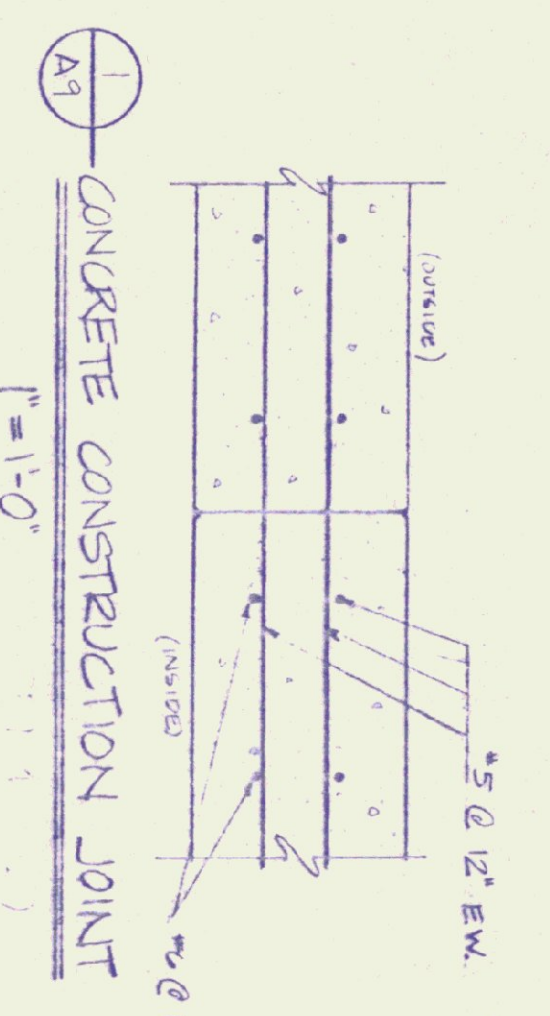
BACK ELEVATION  
1/8" = 1'-0"



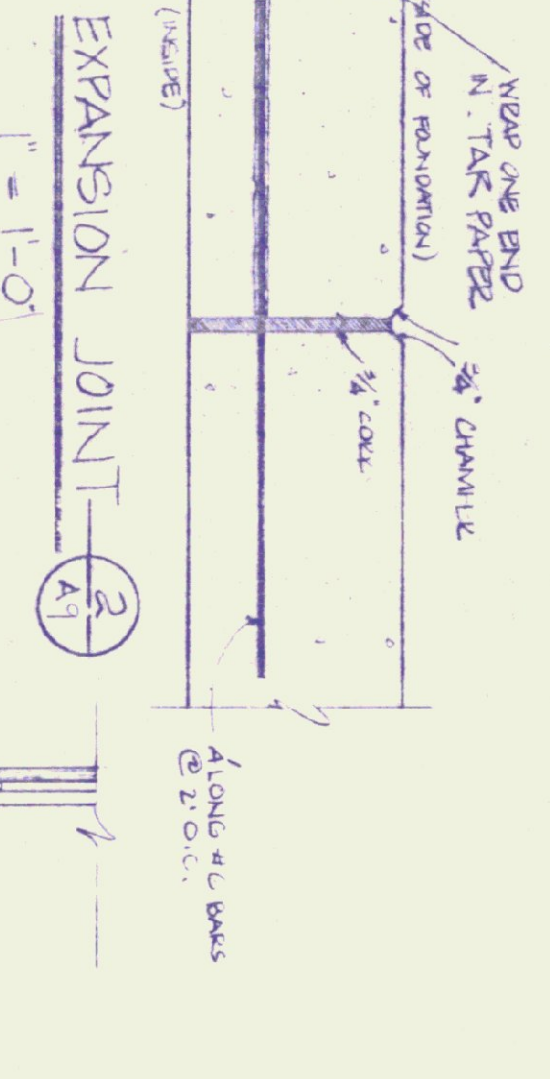
FRONT ELEVATION  
1/8" = 1'-0"



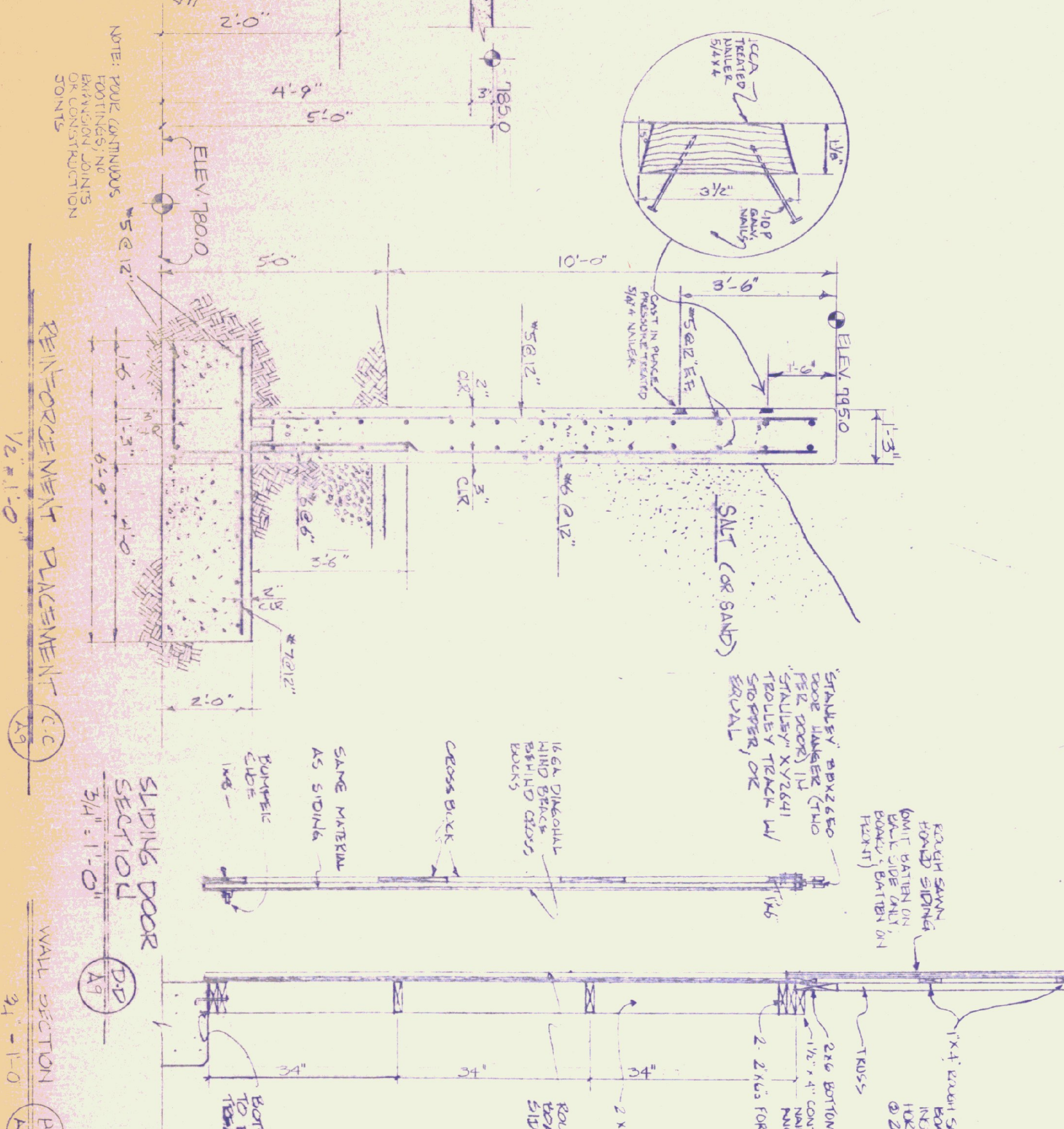
SIDE ELEVATION  
1/8" = 1'-0"



CONCRETE CONSTRUCTION JOINT  
1" = 1'-0"



EXPANSION JOINT  
1" = 1'-0"



REINFORCEMENT PLACEMENT C-C  
1/2" = 1'-0"

WALL SECTION B-B  
3/4" = 1'-0"

TYPICAL OF TWO

NOTE: POLE CONTIGUOUS FOOTINGS/NO BRACING CONNECTIONS

KEY  
- - - - - DETAIL OR SECTION NO.  
- - - - - SHEET NO. DETAIL ON

CONCRETE NOTES  
- 3500 PSI AT 28 DAYS  
- MAXIMUM SLUMP OF 4"  
- EXPOSED WALLS TO BE DRESS FINISHED  
- 1/2" V-JOINTS IN EXPOSED FACE OF CONSTRUCTION JOINTS  
- 3/4" CHAMFER IN OUTER FACE OF EXPANSION JOINTS  
- 4" IRON CAST INTO WALL CORNERS AT GARAGE DOOR FOR STRUCTURAL PROTECTION

TRUSS NOTES  
1) TRUSS MANUFACTURER IS RESPONSIBLE FOR ENGINEERING TRUSS.  
2) TRUSS MANUFACTURER TO PROVIDE THE DIVISION OF STATE BUILDINGS A SET OF ENGINEERED & STAMPED TRUSS DRAWINGS FOR THE DIVISION'S APPROVAL BEFORE TRUSS MANUFACTURE.  
3) TRUSS MANUFACTURER TO PROVIDE CONTRACTOR WITH ALL NECESSARY INSTRUCTIONS FOR PROPER TRUSS INSTALLATION: I.E. ANCHORAGE TO WALL PLATES & STUDS, LATERAL & STABILITY BRACING FOR WIND, ETC.  
4) TRUSS DESIGN LOADS IN ACCORDANCE WITH THE 1991 D.O.C.A. MINIMUM LOADS:  
LIVE - 50 P.S.F. FOR SNOW  
DEAD - AS CALCULATED FROM ROOF MATERIALS, CEILING MATERIALS, & MECHANICAL EQUIP.  
WIND - 25 P.S.F.

STATE OF VERMONT  
DEPARTMENT OF STATE BUILDINGS  
AGENCY OF ADMINISTRATION  
MONTPELIER, VERMONT

SAND AND SALT SHED  
VERMONT AGENCY OF TRANSPORTATION  
5 BAY MAINTENANCE GARAGE  
ENOSBURG FALLS, VERMONT

DATE: MAY 20, 1991  
DRAWN BY: S. REMICK  
SCALE: AS NOTED  
APPROVED BY: F. REITZ  
REVISIONS:  
ENG. NO. A-9  
13 OF 24