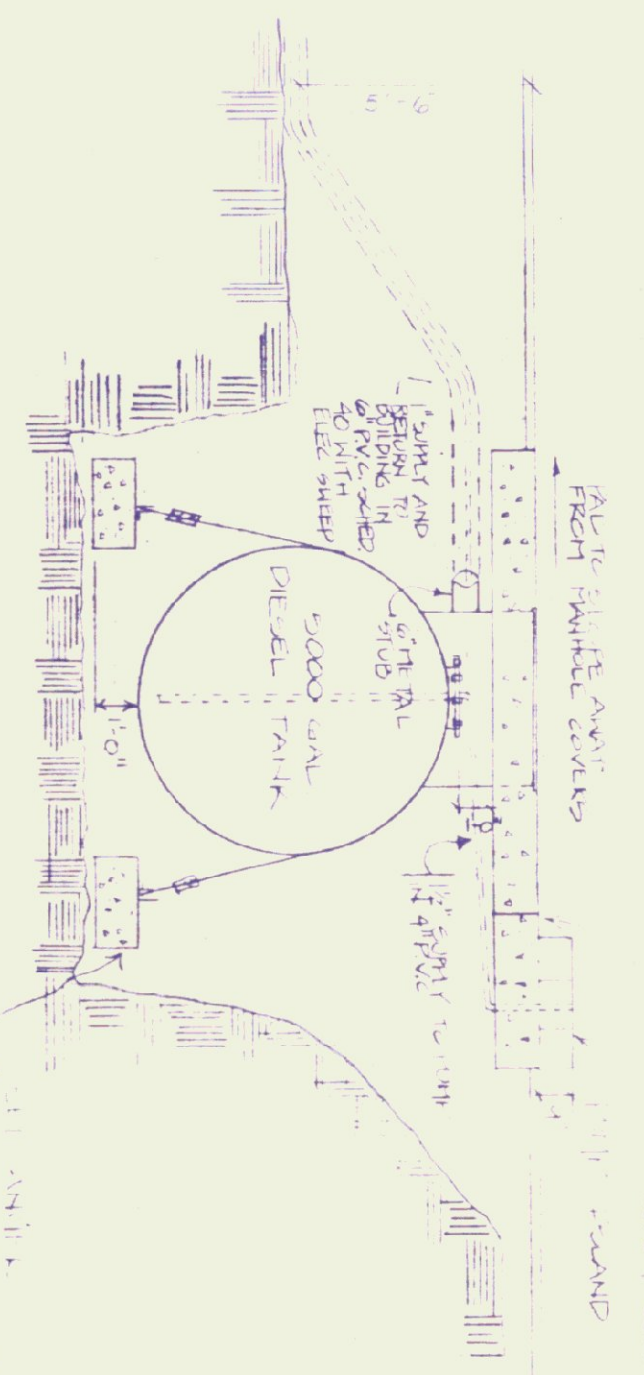
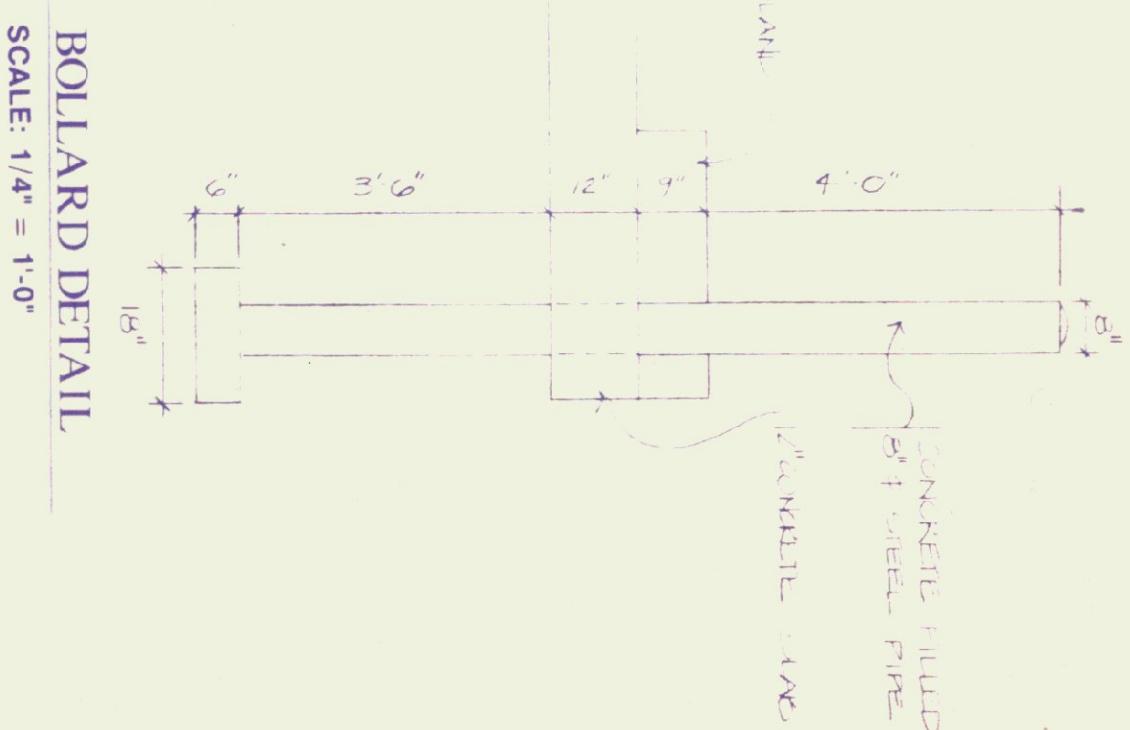


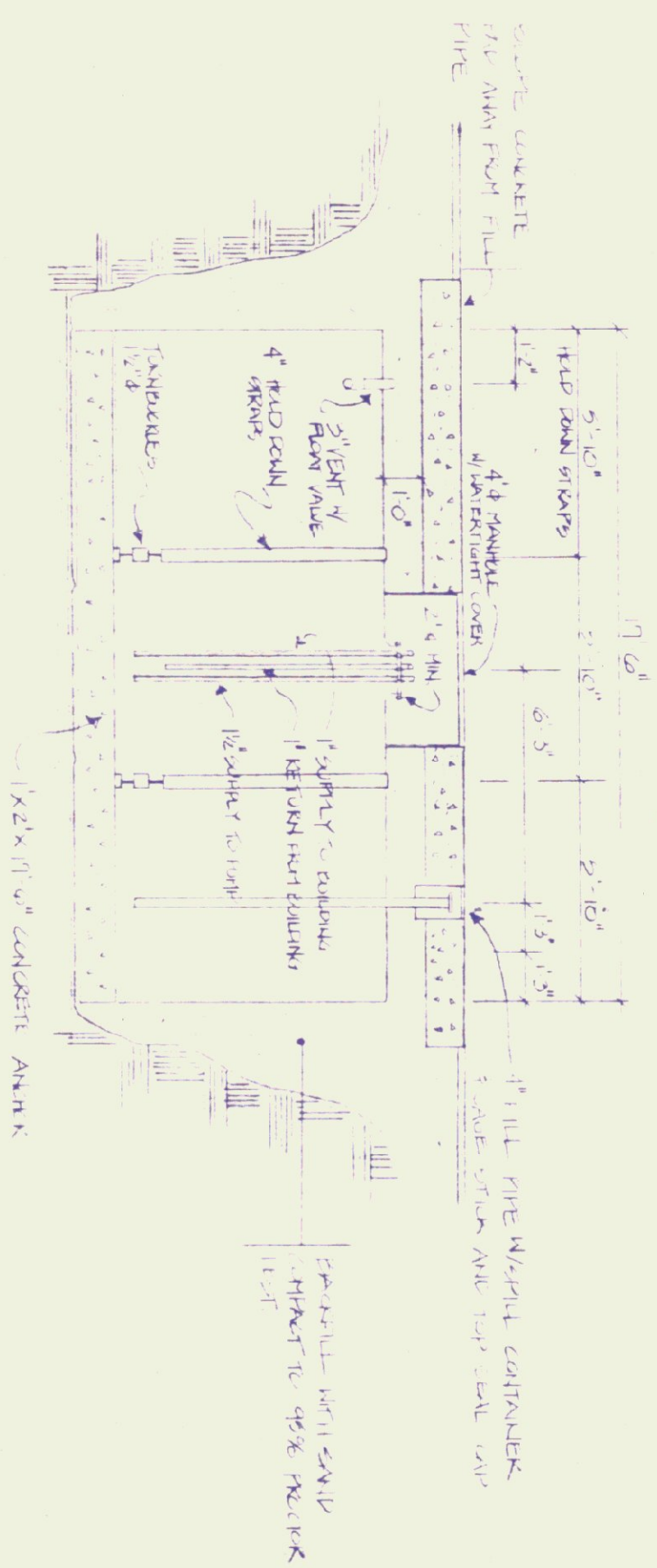
SLAB PLAN
SCALE: 1/4" = 1'-0"



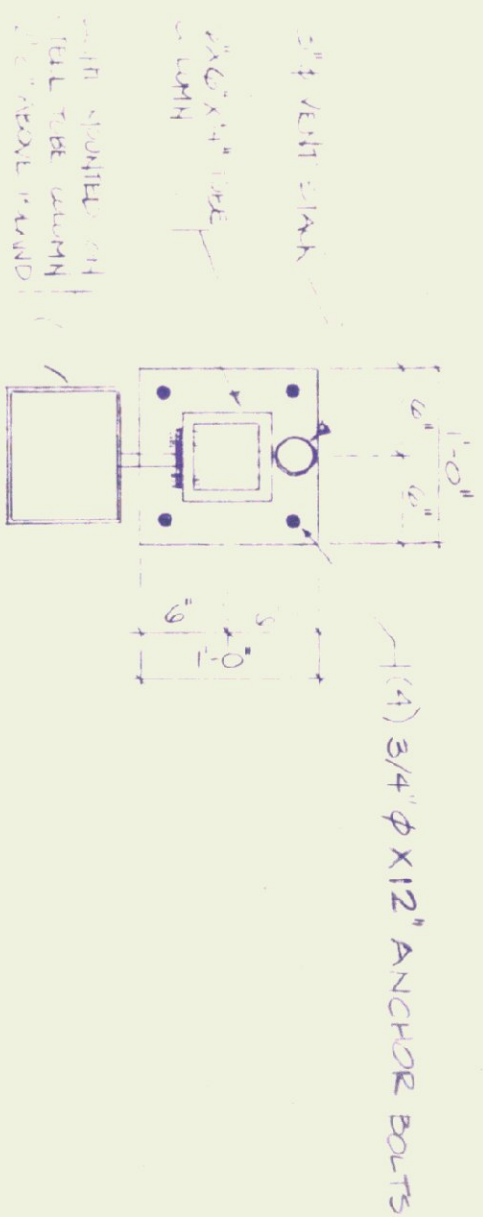
SECTION 1
SCALE: 1/4" = 1'-0"



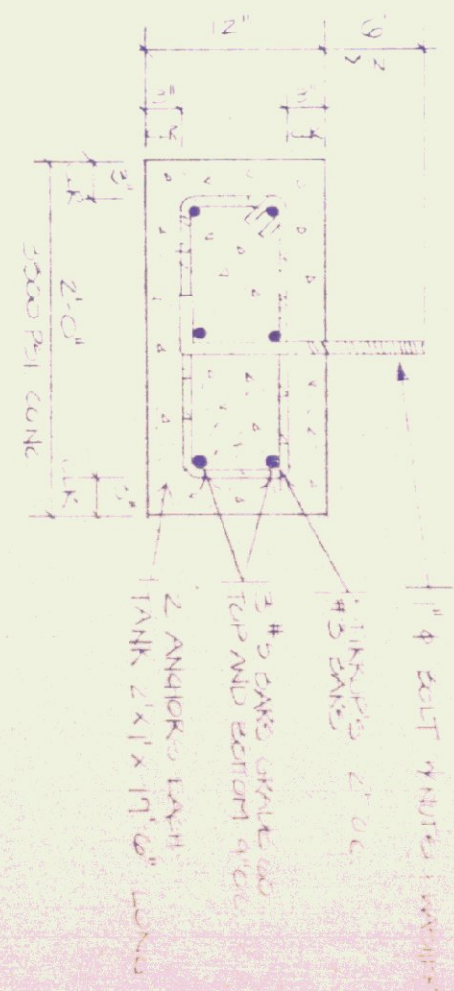
BOLLARD DETAIL
SCALE: 1/4" = 1'-0"



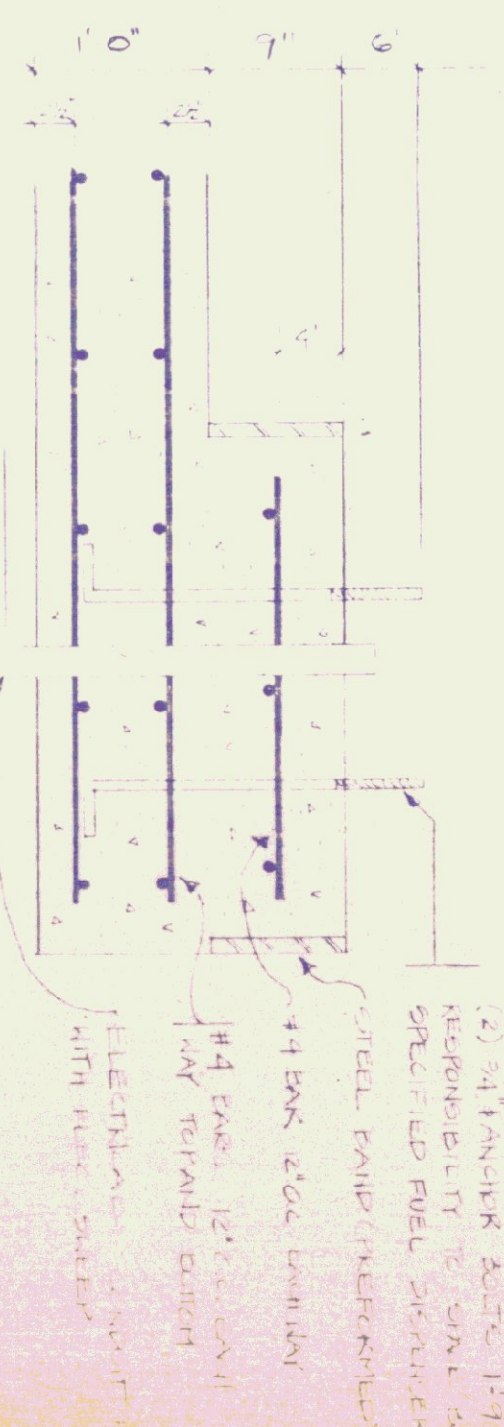
SECTION 2
SCALE: 1/4" = 1'-0"



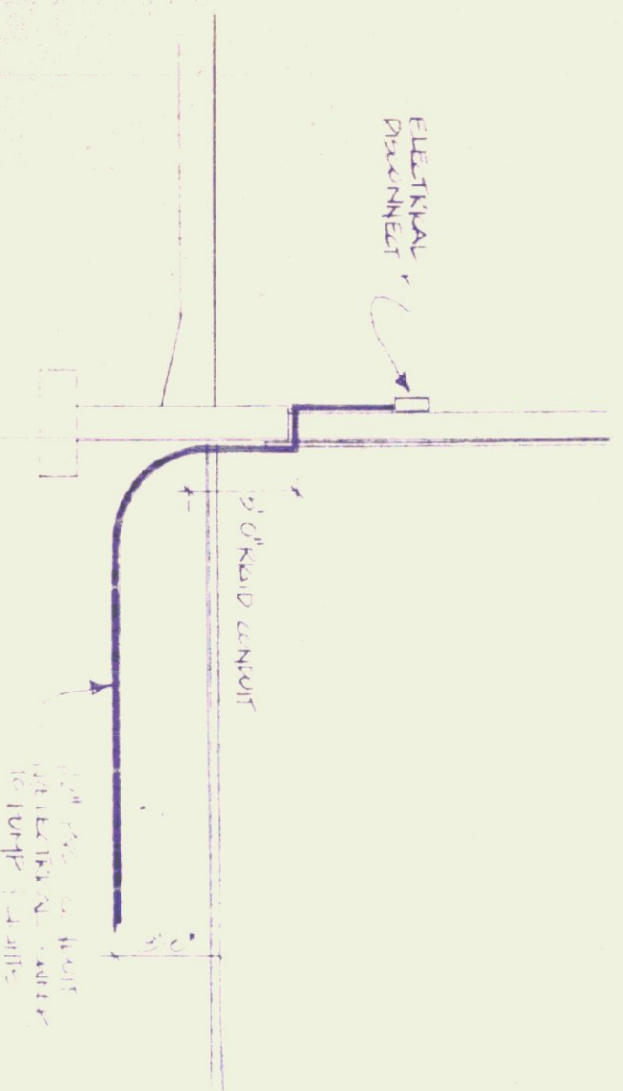
VENT/COLUMN DETAIL
SCALE: 1" = 1'-0"



ANCHOR DETAIL
SCALE: 1" = 1'-0"



CONCRETE SLAB AND ISLAND REINFORCEMENT
SCALE: 1" = 1'-0"



ELECTRICAL TO LIGHT AND PUMP
NOT TO SCALE

SLAB NOTES

1. ALL CONCRETE SHALL BE NORMAL WEIGHT CONCRETE WITH A MINIMUM STRENGTH OF 3500 PSI AT 28 DAYS. CLASS B CONCRETE PER STATE OF VERMONT, AGENCY OF TRANSPORTATION, STANDARD FOR CONSTRUCTION OF BRIDGES.
2. REINFORCEMENT SHALL BE PLACED WITH 1" MINIMUM CLEARANCE TO ALL SURFACES.
3. ALL REBAR SHALL BE EPOXY COATED.
4. ALL REBAR SHALL BE WELDED AND FULLY DEVELOPED.

PUMP AND TANK NOTES

1. FUEL TANK SHALL BE 1500 GALLON CAPACITY. IT SHALL BE CONCRETE WITH A MINIMUM STRENGTH OF 3500 PSI AT 28 DAYS. CLASS B CONCRETE PER STATE OF VERMONT, AGENCY OF TRANSPORTATION, STANDARD FOR CONSTRUCTION OF BRIDGES.
2. DIESEL TANK SHALL BE 1500 GALLON CAPACITY. IT SHALL BE CONCRETE WITH A MINIMUM STRENGTH OF 3500 PSI AT 28 DAYS. CLASS B CONCRETE PER STATE OF VERMONT, AGENCY OF TRANSPORTATION, STANDARD FOR CONSTRUCTION OF BRIDGES.
3. DIESEL TANK SHALL BE 1500 GALLON CAPACITY. IT SHALL BE CONCRETE WITH A MINIMUM STRENGTH OF 3500 PSI AT 28 DAYS. CLASS B CONCRETE PER STATE OF VERMONT, AGENCY OF TRANSPORTATION, STANDARD FOR CONSTRUCTION OF BRIDGES.
4. DIESEL TANK SHALL BE 1500 GALLON CAPACITY. IT SHALL BE CONCRETE WITH A MINIMUM STRENGTH OF 3500 PSI AT 28 DAYS. CLASS B CONCRETE PER STATE OF VERMONT, AGENCY OF TRANSPORTATION, STANDARD FOR CONSTRUCTION OF BRIDGES.

STATE OF VERMONT DEPARTMENT OF STATE BUILDINGS AGENCY OF ADMINISTRATION MONTPELIER, VERMONT		VERMONT FUEL TANK VERMONT AGENCY OF TRANSPORTATION 5 BAY MAINTENANCE GARAGE ENOSBURG FALLS, VERMONT	
DATE MAY 20, 1991	SCALE AS NOTED	REVISIONS	DWG. NO. SD-3
DRAWN BY K. HENDERSON	APPROVED BY K. WELCH		3 OF 24