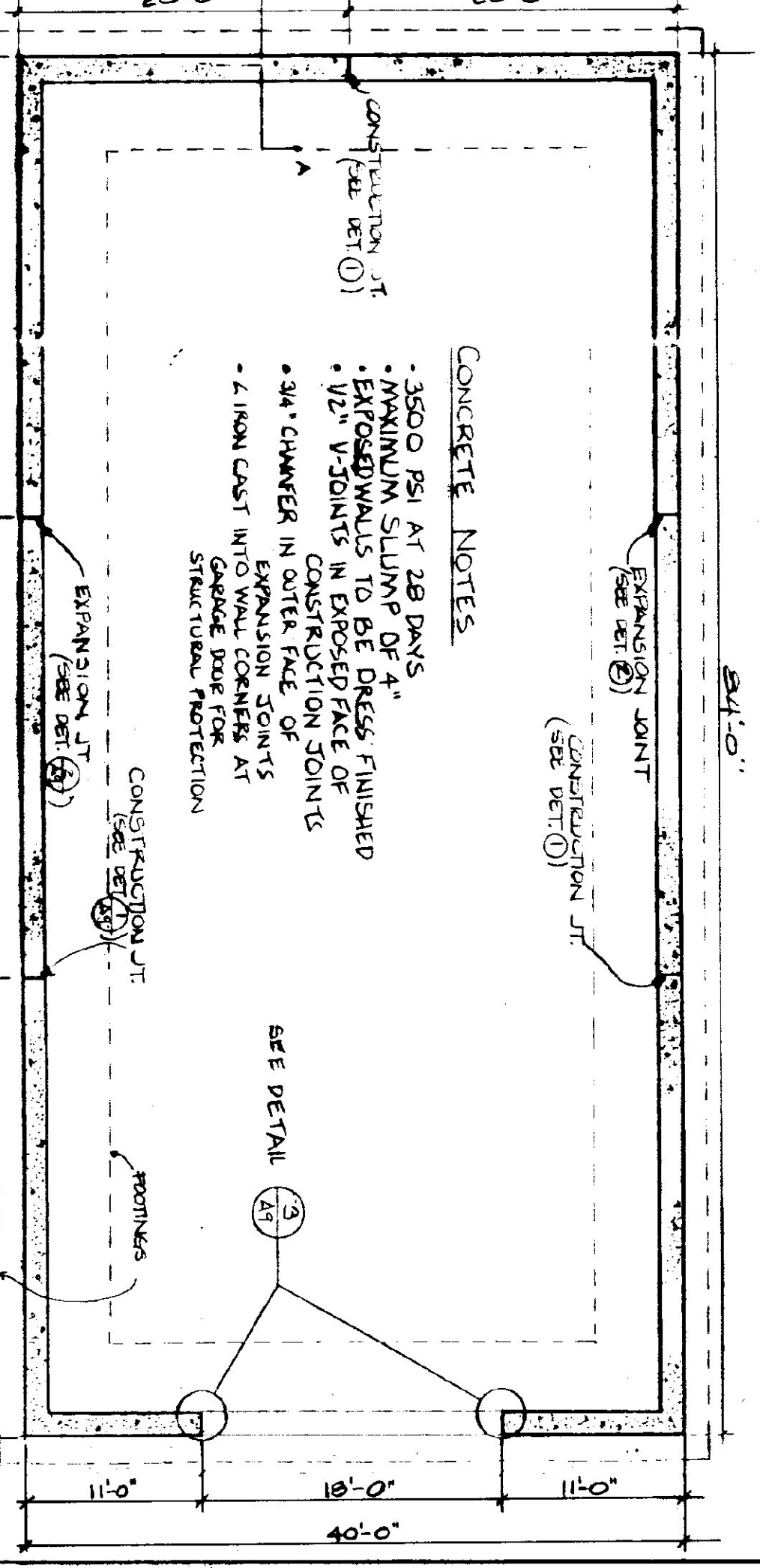
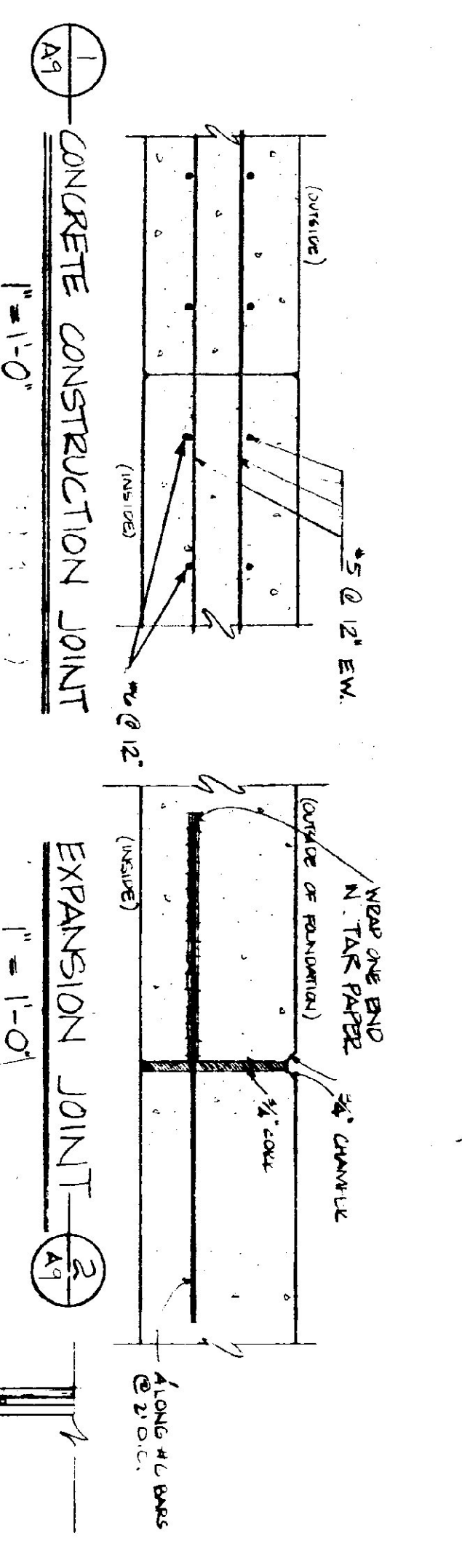
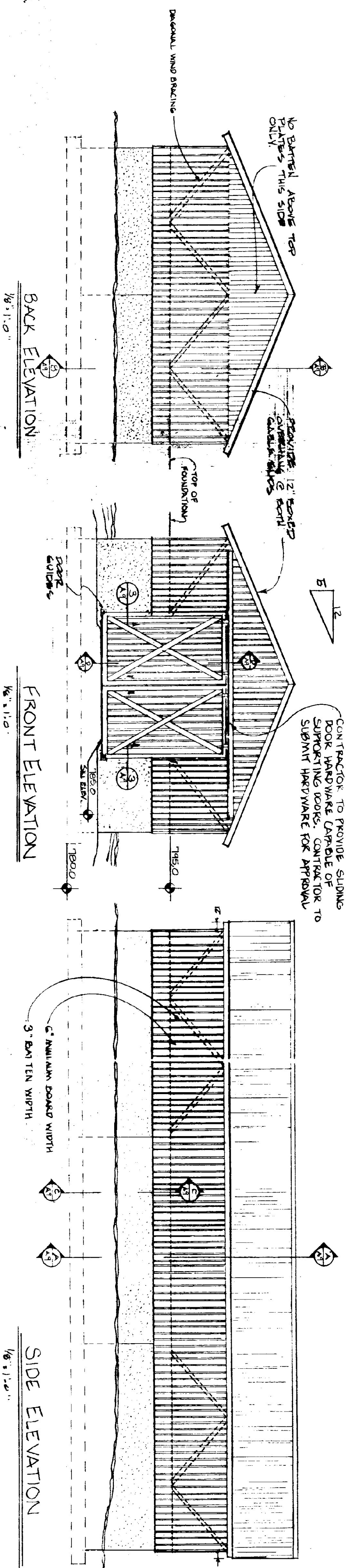


**LUMBER NOTES**

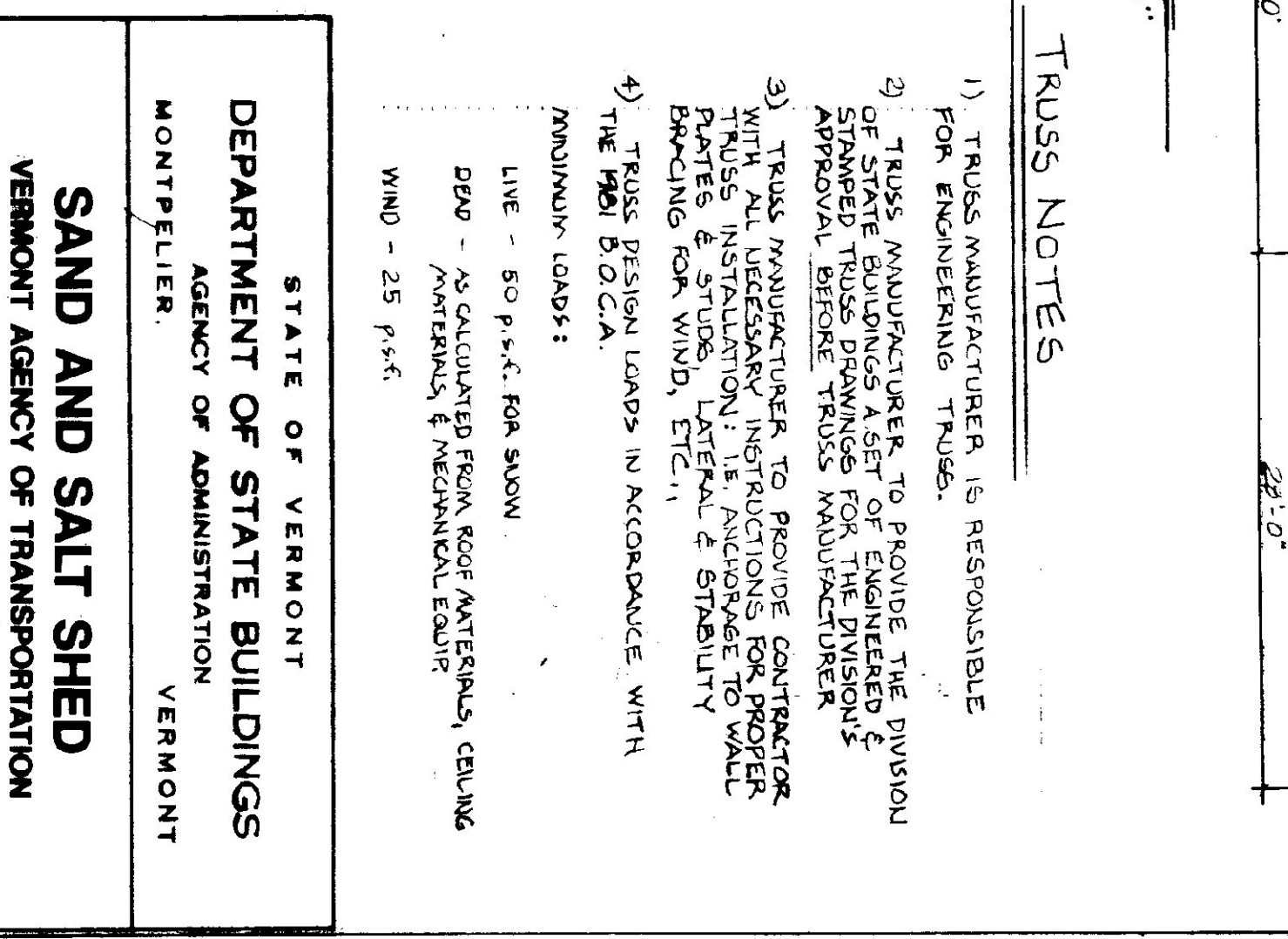
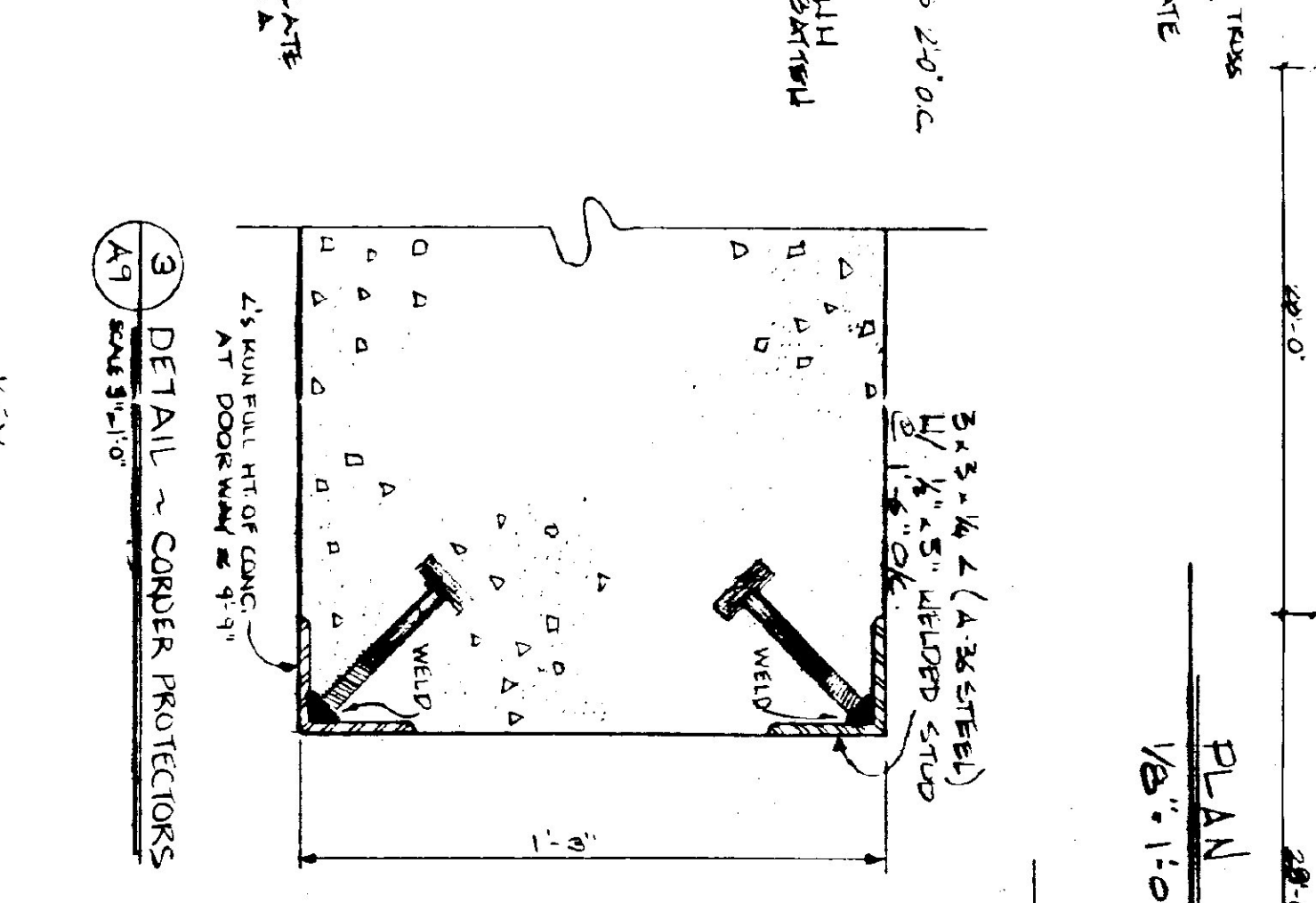
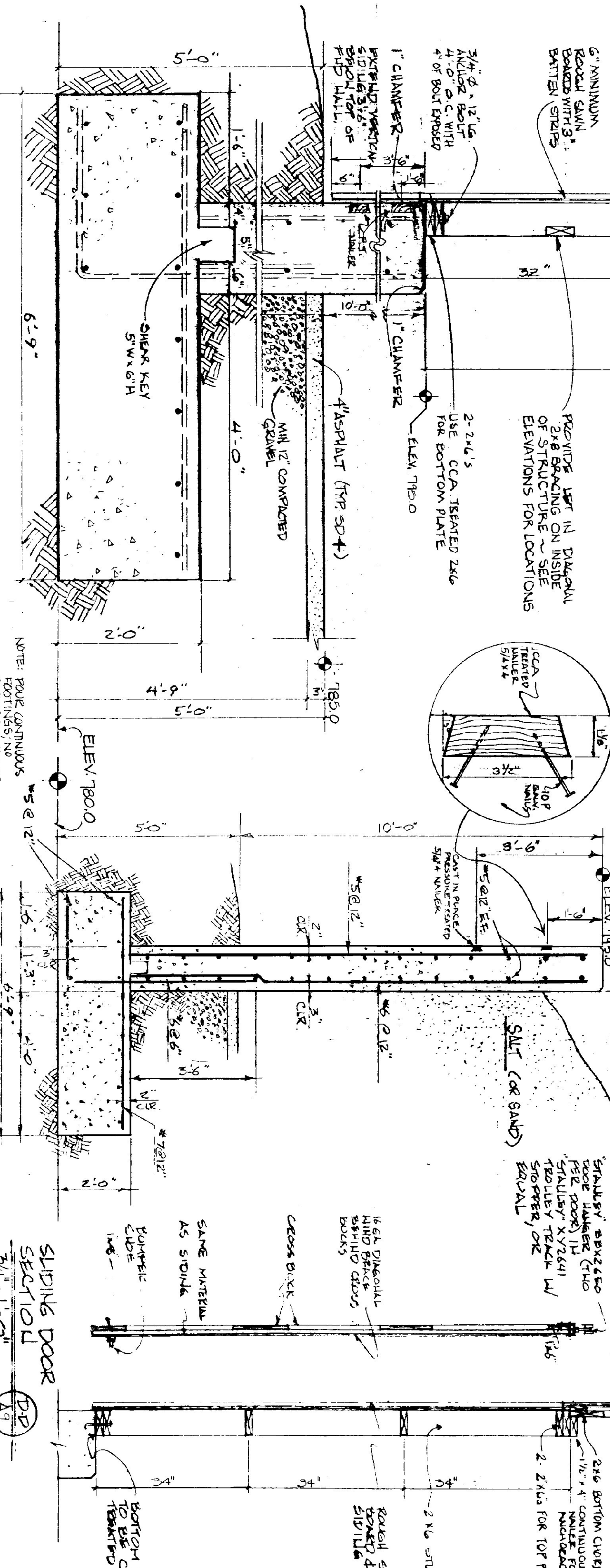
- FRAMING MEMBERS TO BE KILN DRIED
- CONSTRUCTION GRADE LUMBER
- BOARD & BATTEN SIDING TO BE NATIVE
- ROUGH SAWN WHITE PINE
- BOARD WIDTH 8" MINIMUM
- BATTEN WIDTH 3"
- ALL PARTS & VALUES IN CONTACT WITH CONCRETE TO BE CCA TREATED

29 GA. CORRUGATED GALV. METAL ROOFING (CYCLO-PANEL OR APPROVED EQUAL)



**TRUSS NOTES**

- TRUSS MANUFACTURER IS RESPONSIBLE FOR ENGINEERING TRUSSES.
- TRUSS MANUFACTURER TO PROVIDE THE DIVISION OF TRUSS DRAWINGS FOR THE DIVISION'S APPROVAL BEFORE TRUSS MANUFACTURER.
- TRUSS MANUFACTURER TO PROVIDE CONTRACTOR WITH INSTALLATION INSTRUCTIONS FOR WALL PARTS & STUDS, LATERAL & STABILITY BRACING FOR WIND, ETC.
- TRUSS DESIGN LOADS IN ACCORDANCE WITH MINIMUM LOADS:  
LIVE - 50 P.S.F. FOR SNOW  
DEAD - AS CALCULATED FROM ROOF MATERIALS, CEILING MATERIALS, & MECHANICAL EQUIP.  
WIND - 25 P.S.F.



TYPICAL WALL SECTION A-A  
1" = 1'-0"

REINFORCEMENT PLACEMENT C-C  
1/2" = 1'-0"

WALL SECTION B-B  
3/4" = 1'-0"

TYPICAL OF TWO  
DETAIL OF CORNER PROTECTORS  
SCALE 3/4" = 1'-0"

STATE OF VERMONT  
DEPARTMENT OF STATE BUILDINGS  
AGENCY OF ADMINISTRATION  
VERMONT

**SAND AND SALT SHED**  
VERMONT AGENCY OF TRANSPORTATION  
5 BAY MAINTENANCE GARAGE  
ENOSBURG FALLS, VERMONT

DATE: MAY 20, 1991  
SCALE: AS NOTED  
DRAWN BY: S. REMICK  
APPROVED BY: [Signature]

REVISIONS: [Table with 3 columns: No., Description, Date]  
13 OF 24