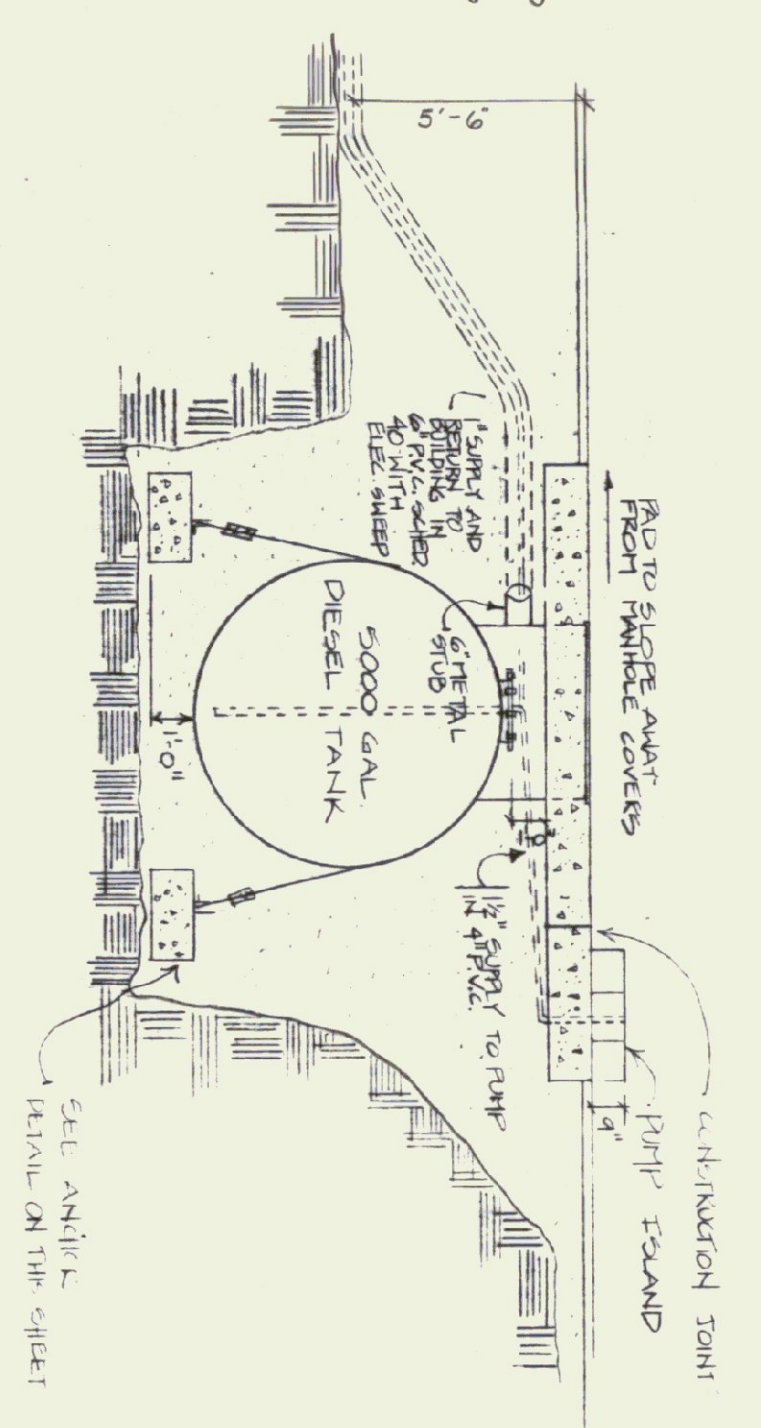
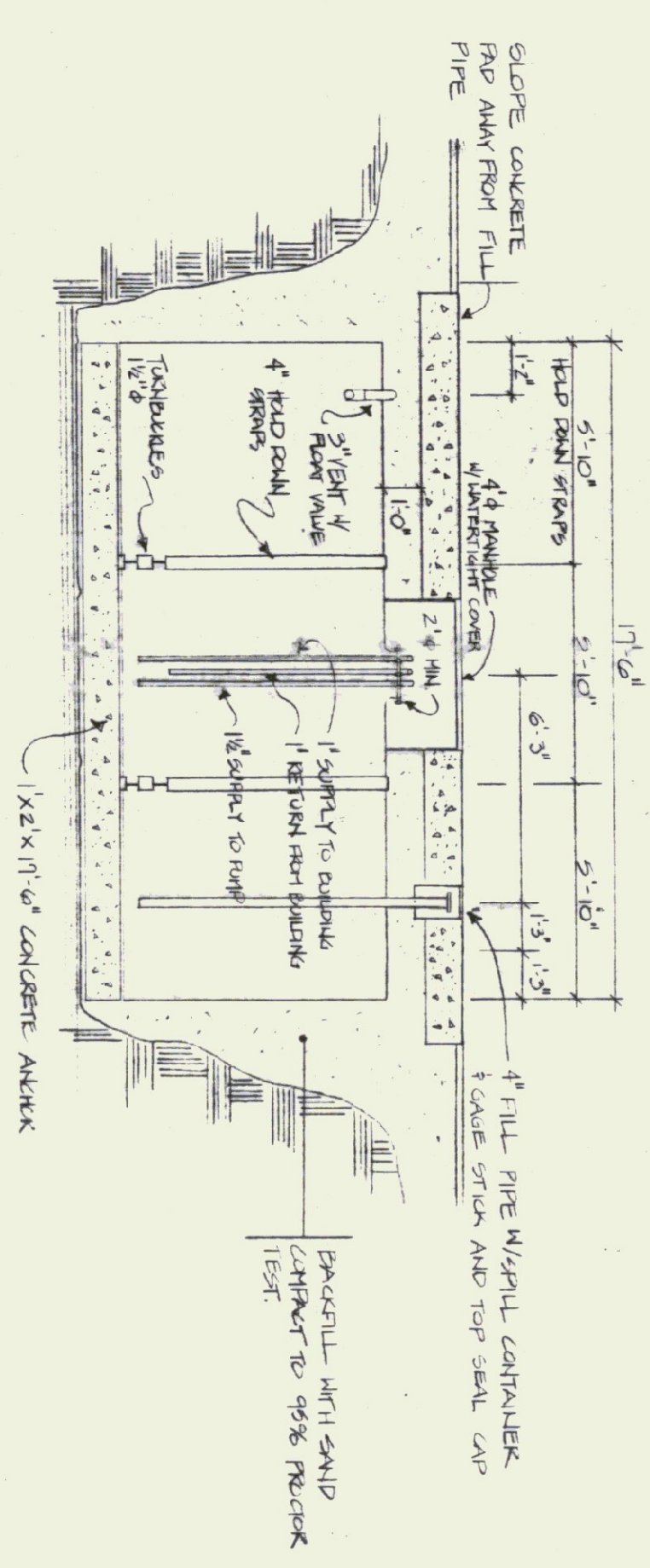


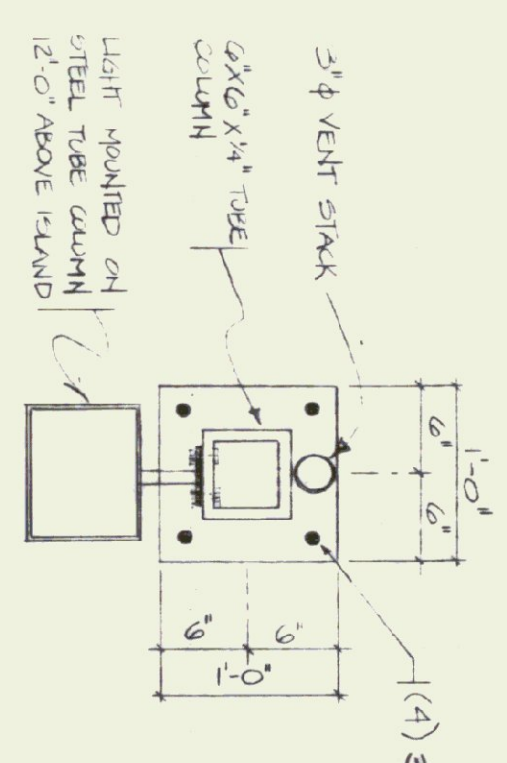
SLAB PLAN
SCALE: 1/4" = 1'-0"



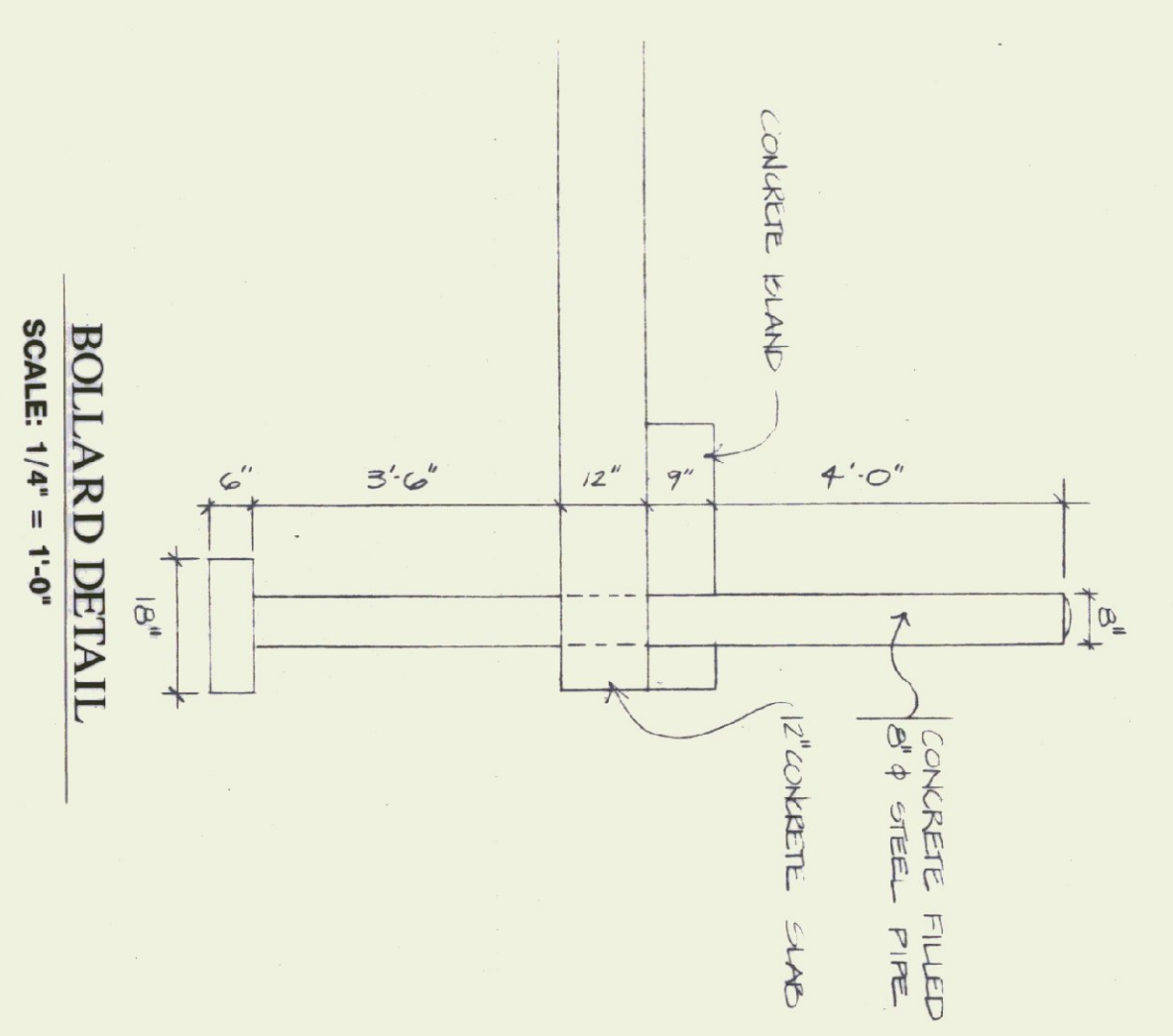
SECTION 1
SCALE: 1/4" = 1'-0"



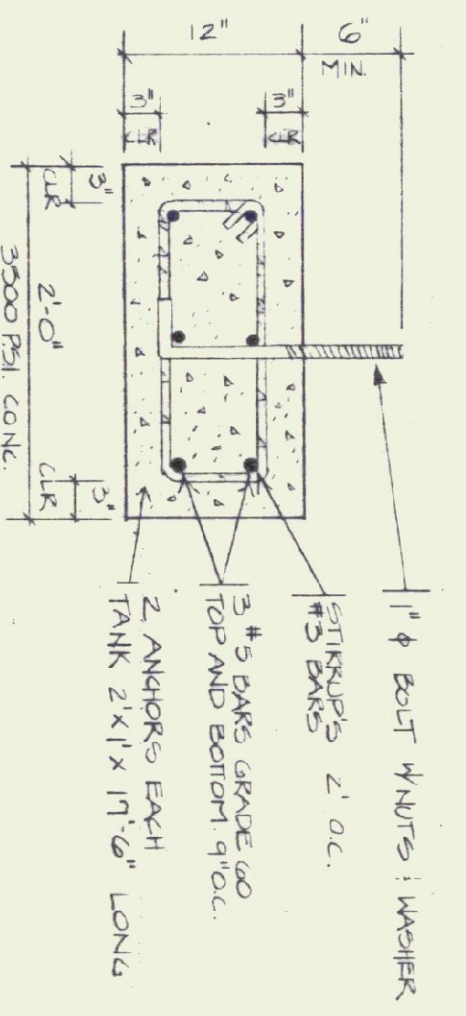
SECTION 2
SCALE: 1/4" = 1'-0"



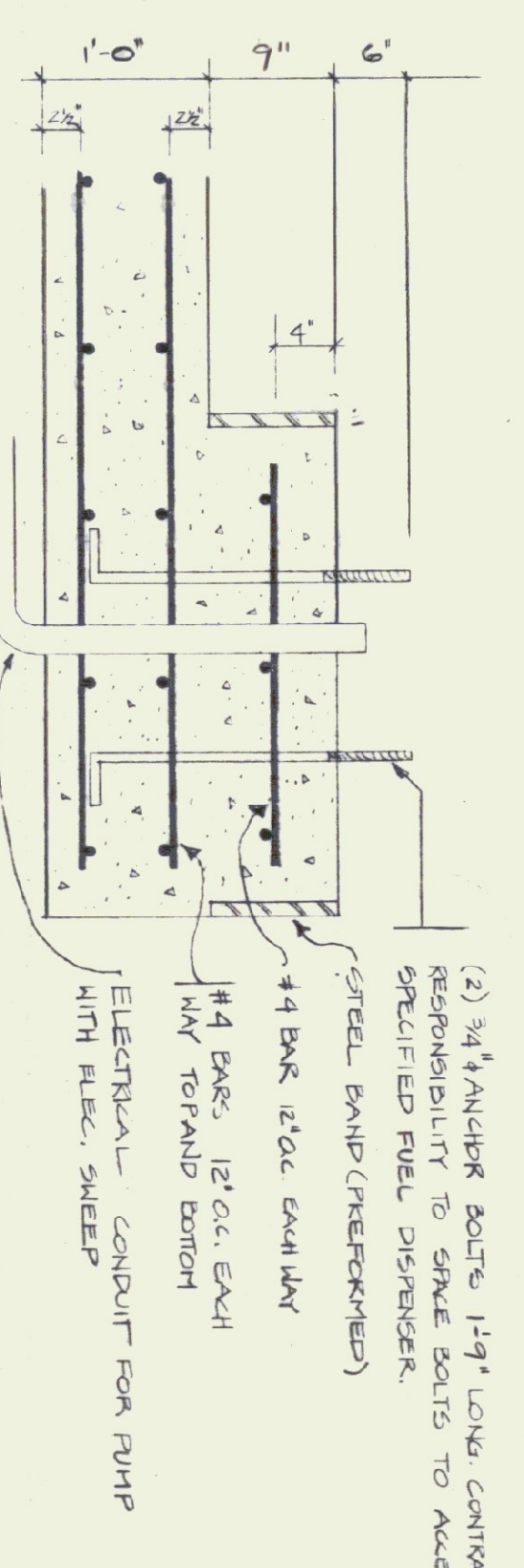
VENT/COLUMN DETAIL
SCALE: 1" = 1'-0"



BOLLARD DETAIL
SCALE: 1/4" = 1'-0"

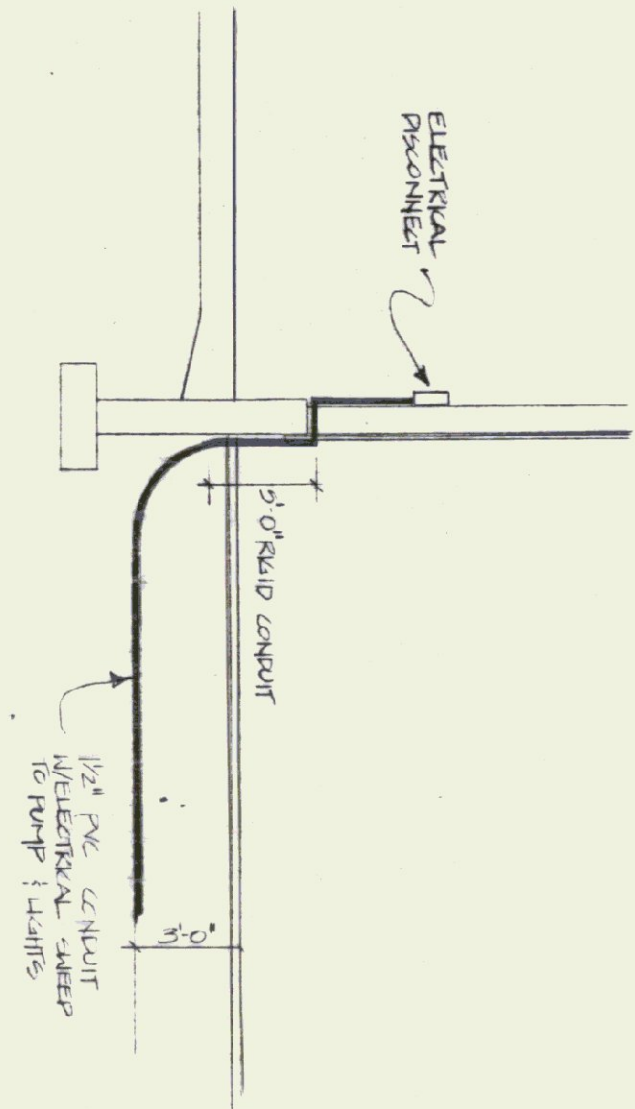


ANCHOR DETAIL
SCALE: 1" = 1'-0"



CONCRETE SLAB AND ISLAND REINFORCEMENT
SCALE: 1" = 1'-0"

ELECTRICAL TO LIGHT AND PUMP
NOT TO SCALE



SLAB NOTES

1. ALL CONCRETE SHALL BE NORMAL WEIGHT HAVING A MINIMUM STRENGTH OF 3500 PSI AT 28 DAYS. CLASS B CONCRETE PER STATE OF VERMONT, AGENCY OF TRANSPORTATION, STANDARD SPECIFICATION FOR CONSTRUCTION.
2. REINFORCING STEEL SHALL COMPLY WITH ASTM A601 GRADE 60.
3. ANCHOR BOLTS TO BE GRADE A307.
4. SLOPE CONCRETE AWAY FROM ALL MANHOLES AND FILL POINTS.

PUMP AND TANK NOTES

1. PUMPER: I GARDNER SERIES 50/53A REFRIG. PUMPER; CONNECT TO 5000 GAL. DIESEL TANK.
2. DIESEL TANK TO BE UNDERGROUND 511-13 SLOTTED DOUBLE WALL TANK. 70% INTERVAL, 10 GA. OUTRIGAL.
3. CONTAINMENT MANHOLE: FILL PTE TO HAVE WATER TIGHT 5000 GAL.
4. PUMP TO HAVE DIESEL FILTER, 1/2" DIESEL VALVE, 3/4" HOSE, MANUAL NOZZLE AND PETER IN U.S. GALLONS, W/HOSE RETURNER.
5. ALL INSTALLATIONS ARE TO CONFORM TO STATE OF VERMONT, UNDERGROUND STORAGE TANK REGULATIONS, PARAGR. 1, 1981.

STATE OF VERMONT DEPARTMENT OF STATE BUILDINGS AGENCY OF ADMINISTRATION VERMONT		FUEL TANK VERMONT AGENCY OF TRANSPORTATION 5 BAY MAINTENANCE GARAGE VERMONT	
DATE MAY 20, 1991	SCALE AS NOTED	REVISIONS:	DWG. NO. SD-3
DRAWN BY: K. HENDERSON	APPROVED BY: K. WELCH		3 OF 24