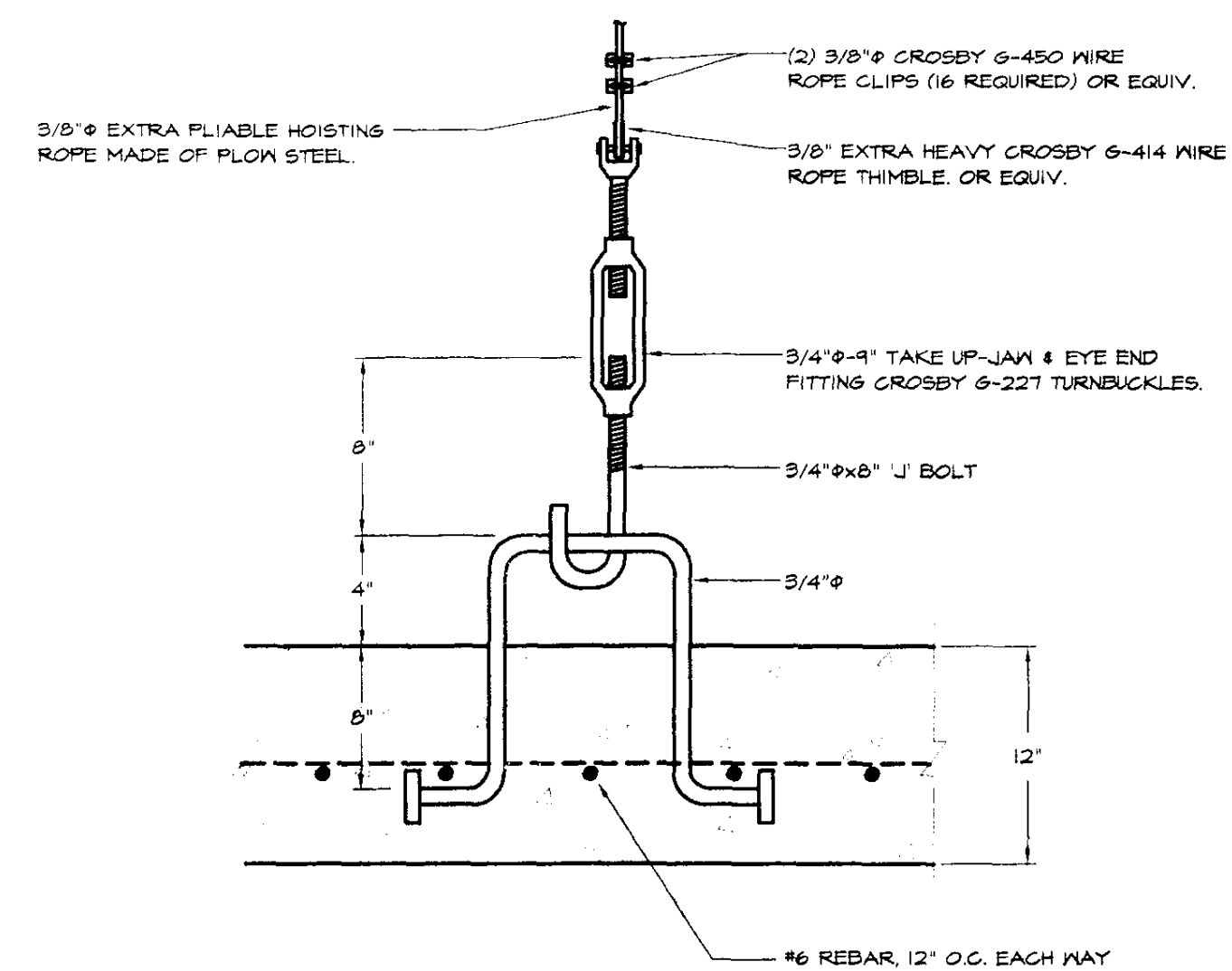


| DIFFUSER-GRILLE-REGISTER-LOUVER SCHEDULE | | | | | | | | |
|--|--------------|--------|----------|---------|----------|--------|--------|---------|
| No. | MANUFACTURER | SERIES | MODEL | SIZE | AIR PAT. | DAMPER | FINISH | REMARKS |
| S-1 | METAL-AIRE | V4000 | V4004 | 10"x8" | - | - | - | |
| S-2 | METAL-AIRE | V4000 | V4004 | 8"x4" | - | - | - | |
| S-3 | METAL-AIRE | V4000 | V4004 | 12"x6" | - | - | - | |
| L-1 | RUSKIN | ELF | ELF375DX | 48"x48" | - | - | D.E. | NOTE 1 |

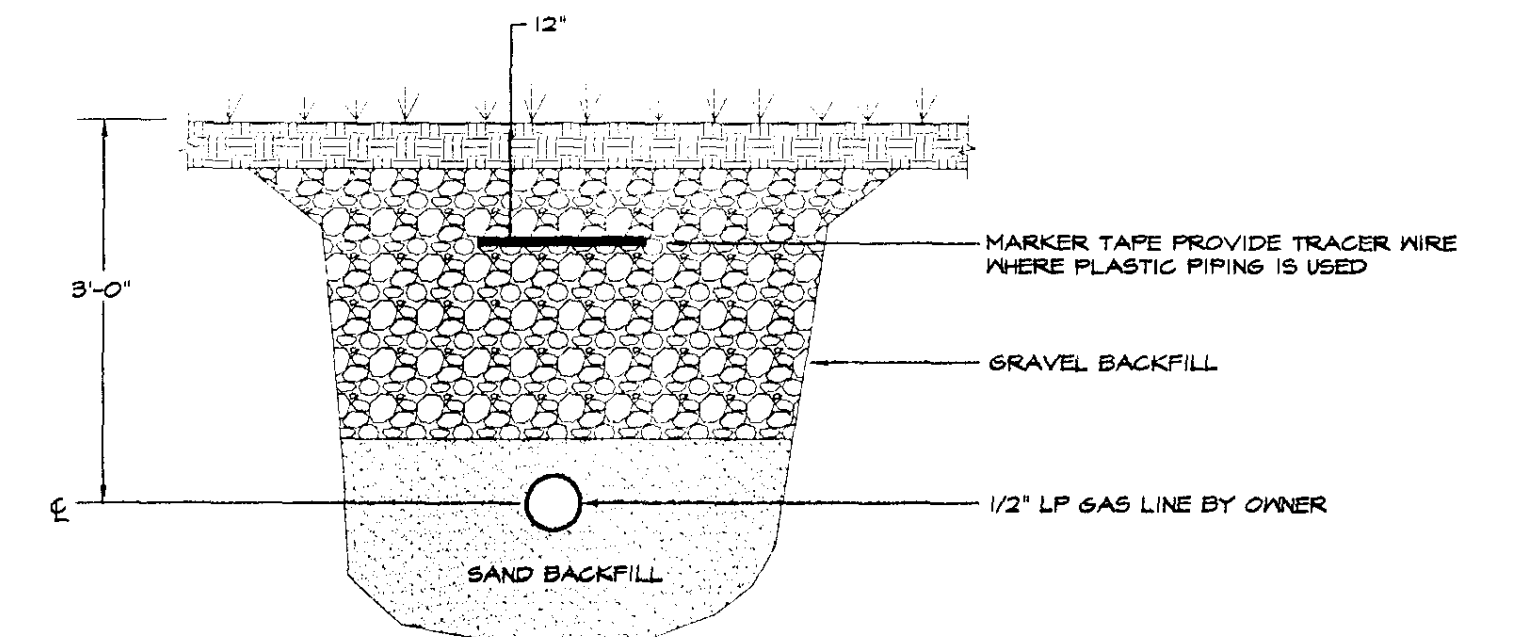
NOTES:
1) PROVIDE GALVANIZED BIRDSCREEN, BAKED ENAMEL FINISH, COLOR TO BE SELECTED BY ENGINEER.

| GAS FIRED UNIT HEATER SCHEDULE | | | | | | | | | | |
|--------------------------------|--------------|----------|------------------|------------------|-------------------|-----------|-------|------|----|---------|
| No. | MANUFACTURER | MODEL | CFM AT 0" E.S.P. | MBH LP GAS INPUT | MBH LP GAS OUTPUT | FAN DRIVE | MODEL | | | REMARKS |
| | | | | | | | H.P. | VOLT | PH | |
| GUH-1 | REZNOR | UDBS-300 | 3500 | 300 | 244 | BELT | 1 1/2 | 240 | 1 | NOTE 1 |
| GUH-2 | REZNOR | UDBS-300 | 3500 | 300 | 244 | BELT | 1 1/2 | 240 | 1 | NOTE 1 |
| GUH-3 | REZNOR | UDBS-45 | 456 | 45 | 36.9 | DIRECT | 1/6 | 115 | 1 | NOTE 2 |

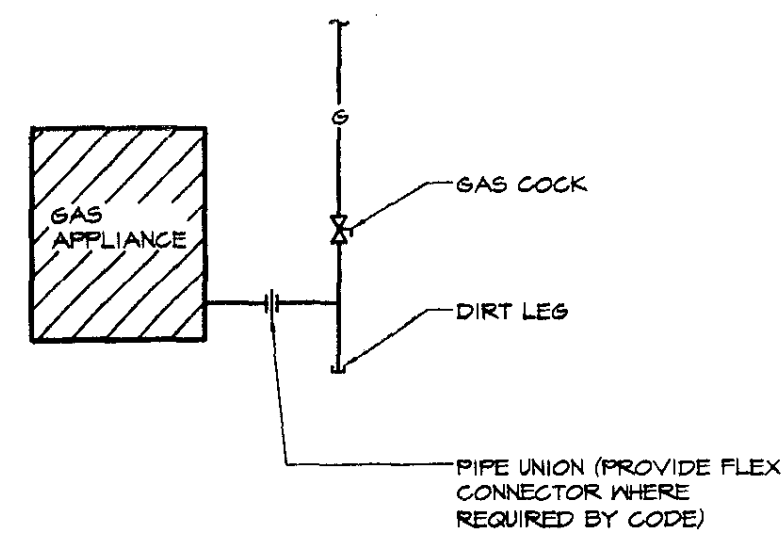
NOTES:
1) PROVIDE ALL STANDARD FEATURES INCLUDING THE FOLLOWING FACTORY INSTALLED OPTIONS: PROPANE CONVERSION KIT, TWO STAGE CONTROL, 409 STAINLESS STEEL HEAT EXCHANGER, ADJUSTABLE BELT DRIVE MOTOR, TOTALLY ENCLOSED MOTOR, BLOWER AND BELT GUARDS. PROVIDE THE FOLLOWING FIELD INSTALLED ACCESSORIES: COMBUSTION AND VENT KIT, TWO STAGE THERMOSTAT.
2) PROVIDE ALL STANDARD FEATURES INCLUDING THE FOLLOWING FACTORY INSTALLED OPTIONS: PROPANE CONVERSION KIT, TWO STAGE CONTROL, 409 STAINLESS STEEL HEAT EXCHANGER, ADJUSTABLE MULTI-TAP DIRECT DRIVE MOTOR, DUCT FLANGE, TOTALLY ENCLOSED MOTOR, BLOWER GUARD. PROVIDE THE FOLLOWING FIELD INSTALLED ACCESSORIES: COMBUSTION AND VENT KIT, TWO STAGE HEATING THERMOSTAT.



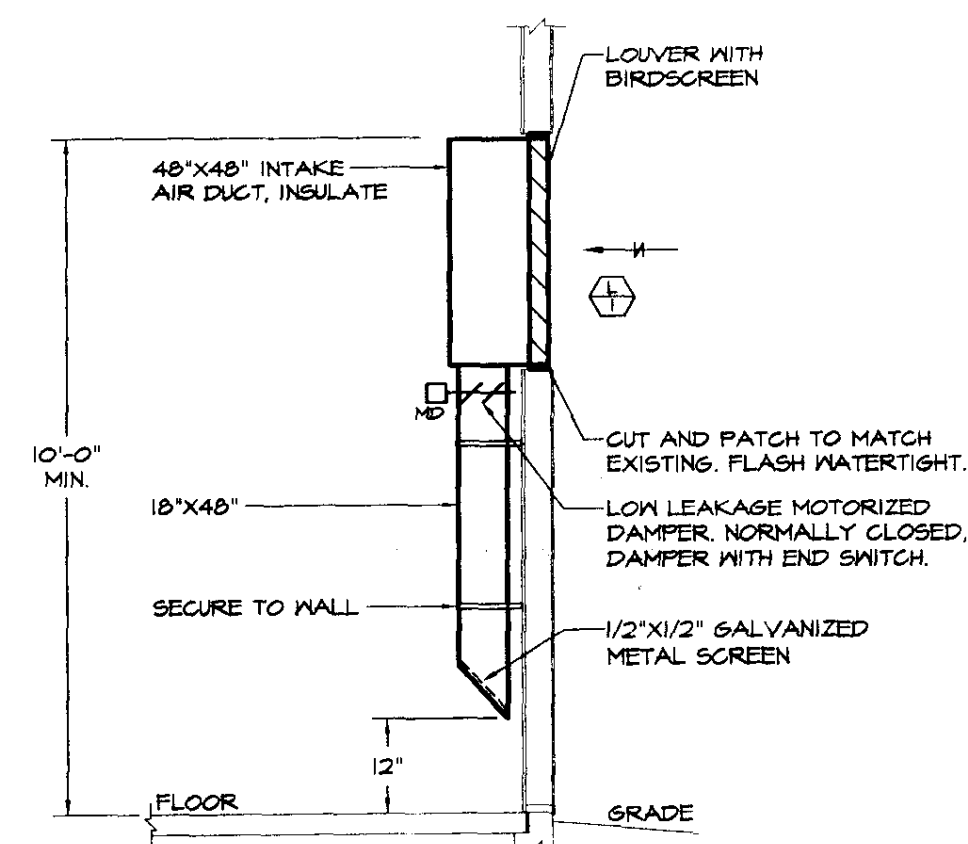
TANK ANCHOR BOLT DETAIL
NOT TO SCALE



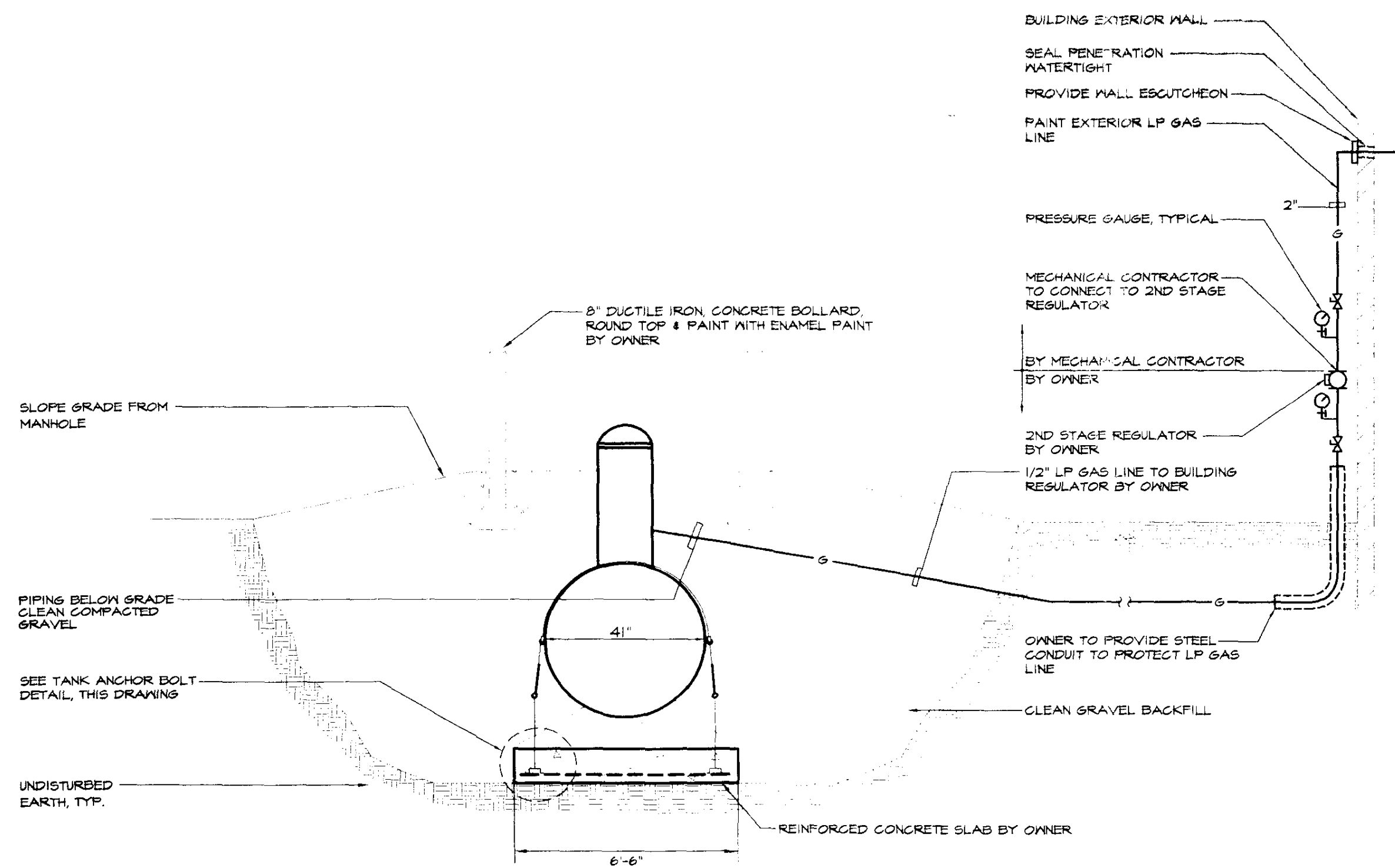
LP GAS SUPPLY PIPE TRENCHING DETAIL
NOT TO SCALE



LP GAS APPLIANCE CONNECTION DETAIL
NOT TO SCALE

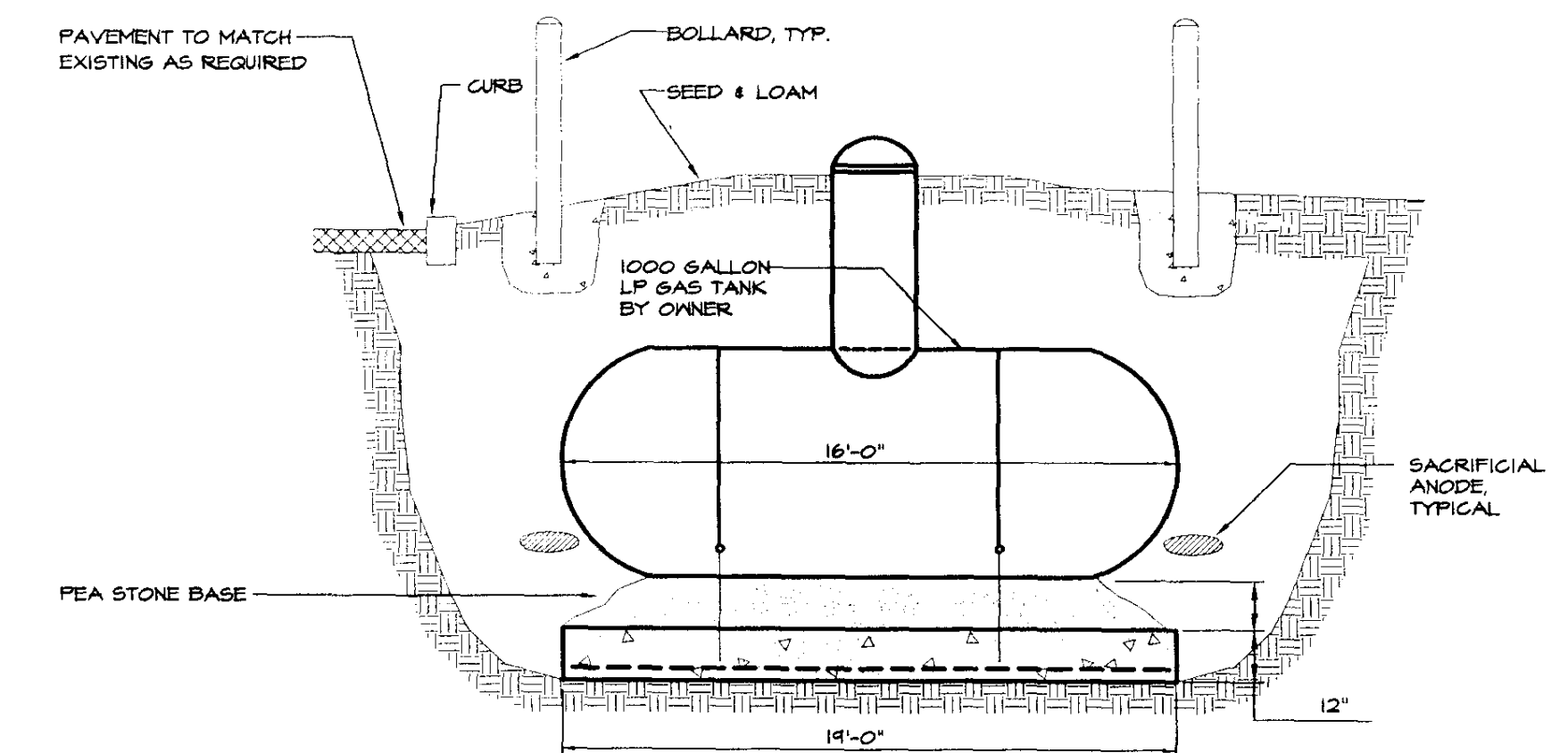


INTAKE LOUVER DETAIL
NOT TO SCALE

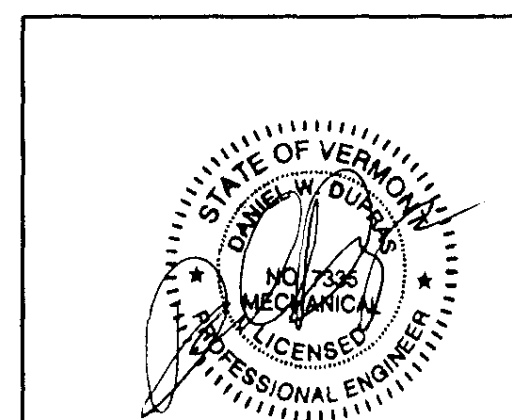


UNDERGROUND LP GAS TANK DETAILS
NOT TO SCALE

NOTE:
OWNER TO FURNISH AND INSTALL LP GAS TANK, BOLLARDS, HOLDDOWN PAD, LP GAS LINE FROM TANK TO BUILDING AND 1ST & 2ND STAGE REGULATORS.



X:\031222\Drawings\Mech\031222M03.dwg, MSJ, 7/7/2005 9:46:45 AM, © LANE ASSOCIATES CONSULTING ENGINEERS P.C. 2005



| | | |
|-----|--------------------------|---------|
| NO. | ISSUED FOR | DATE |
| 1 | BIDDING AND CONSTRUCTION | 07/2005 |



HEATING, VENTILATION, & AIR CONDITIONING,
PLUMBING, FIRE PROTECTION, & ELECTRICAL

CHARLES F. LANE, P.E.
DANIEL W. DUPRAS, P.E.

51 KILLINGTON AVENUE,
RUTLAND, VERMONT 05701
TELEPHONE: (802)747-3346
FAX/MODEM: (802)747-3356

| | | | | |
|--|-----|--------|---------|-----------------|
| MECHANICAL SCHEDULES AND DETAILS | | | | M 3 |
| CAMBRIDGE AOT GARAGE VERMONT AGENCY OF TRANSPORTATION CAMBRIDGE, VERMONT | | | | |
| APPR: | DWD | DRAWN: | KPG | SCALE: AS NOTED |
| PROJ. NO. | | | 03/2-22 | |