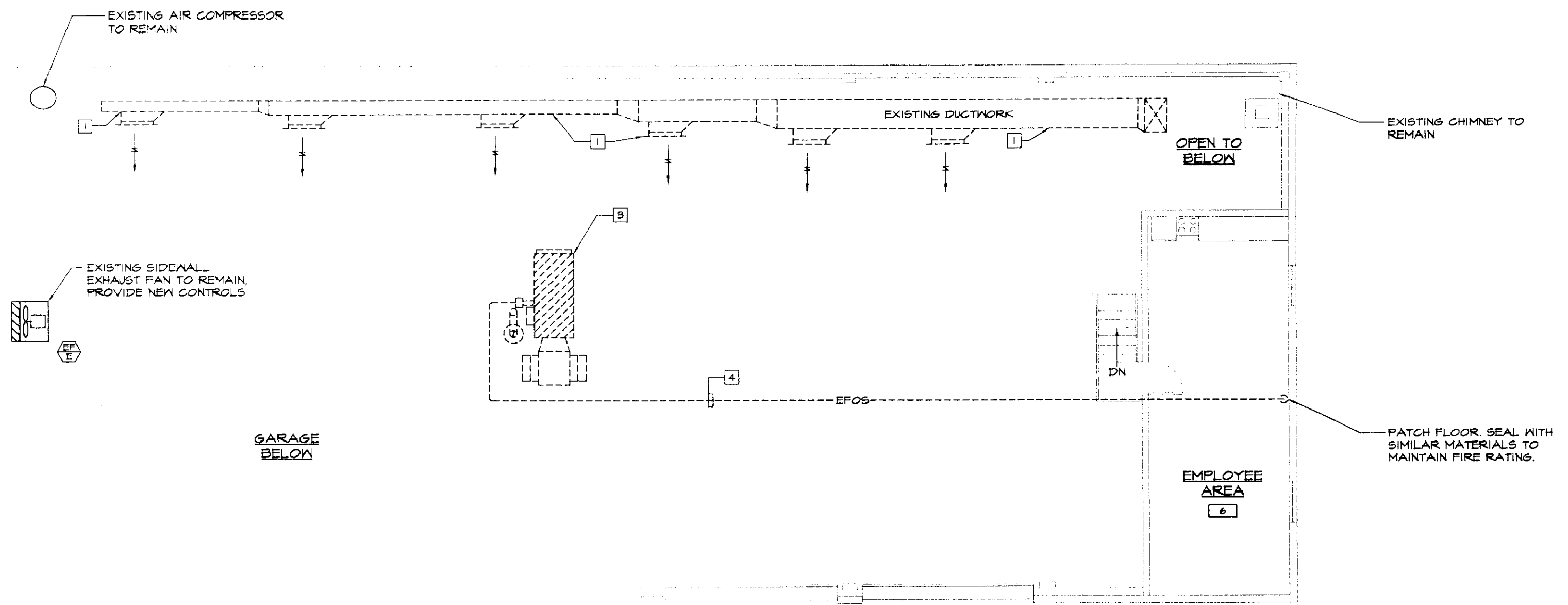


MECHANICAL LEGEND & ABBREVIATIONS

- ⊘ BALL VALVE
- PIPE RISER
- PIPE DROP
- PIPE GAP
- FOS FUEL OIL SUPPLY, E = EXISTING
- FOR FUEL OIL RETURN E = EXISTING
- LP GAS PIPING
- ⊠ LP GAS REGULATOR
- ⊕ THERMOSTAT
- ⊖ EXISTING THERMOSTAT TO BE REMOVED
- St SWITCH, SUBSCRIPT: T = TIMER
- ▭ NEW DUCTWORK
- - - EXISTING DUCTWORK TO BE REMOVED
- ⊗ SUPPLY DUCT DOWN
- ⊗ SUPPLY DUCT UP
- ▭ FLEXIBLE DUCT CONNECTOR
- AIR FLOW INDICATOR
- VOLUME DAMPER
- M D MOTORIZED DAMPER
- FD FIRE DAMPER
- E.C. ELECTRICAL CONTRACTOR
- G.C. GENERAL CONTRACTOR
- G.U.H. GAS FIRED UNIT HEATER
- ⊙ CONNECT TO EXISTING
- ① DRAWING NOTE TAG
- ⊠ DEMOLITION NOTE TAG
- ⊕ LOUVER
- ⊕ SUPPLY DIFFUSER
- ⊕ GAS FIRED UNIT HEATER
- ⊕ EQUIPMENT TYPE EXISTING
- ⊕ SECTION NUMBER
- ⊕ DWS. NUMBER

DEMOLITION NOTES: (APPLY TO THIS DRAWING ONLY)

- 1 OWNER TO REMOVE EXISTING DUCTWORK AND DUCT HANGERS.
- 2 OWNER TO REMOVE EXISTING WOOD FIRED FURNACE AND FLUE. CONTRACTOR TO CAP AND SEAL FLUE CONNECTOR AT CHIMNEY.
- 3 OWNER TO REMOVE EXISTING OIL FIRED FURNACE AND FLUE. OWNER TO PATCH ROOF.
- 4 CONTRACTOR TO REMOVE EXISTING FUEL OIL SUPPLY LINE AND TRANSFER PUMP. CONTRACTOR TO CAP FUEL OIL SUPPLY AND RETURN LINES FROM OIL TANK. UNDERGROUND FUEL OIL SUPPLY AND RETURN LINES TO TANK TO BE ABANDONED IN PLACE.
- 5 CONTRACTOR TO REMOVE EXISTING THERMOSTAT FOR WOOD FIRED FURNACE, INCLUDING ASSOCIATED WIRING.
- 6 CONTRACTOR TO REMOVE EXISTING THERMOSTAT FOR OIL FIRED FURNACE, INCLUDING ASSOCIATED WIRING.
- 7 CONTRACTOR TO REMOVE EXISTING DOMESTIC HOT WATER HEATER, SALVAGE AND RETURN TO OWNER.
- 8 CONTRACTOR TO REMOVE EXISTING DOMESTIC HOT WATER PIPING, PUMP, VALVES AND ASSOCIATED SPECIALTIES.
- 9 CONTRACTOR TO REMOVE ELECTRIC HEATER, THERMOSTAT AND ASSOCIATED WIRING AND CONDUIT BACK TO JUNCTION BOX.
- 10 CONTRACTOR TO REMOVE WALL HEATER, CONTROLS AND ALL ASSOCIATED PIPING. SALVAGE WALL HEATER AND DELIVER TO THE OWNER.



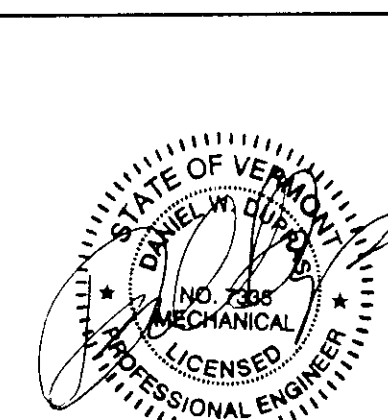
MEZZANINE FLOOR PLAN - MECHANICAL DEMOLITION
SCALE: 1/4"=1'-0"

TOOL STORAGE
8



MAIN FLOOR PLAN - MECHANICAL DEMOLITION
SCALE: 1/4"=1'-0"

X:\03122\Drawings\Mech\03122M01.dwg, M1, 7/7/2005 8:44:19 AM, © LANE ASSOCIATES CONSULTING ENGINEERS, P.C. 2005



| | | |
|-----|--------------------------|---------|
| NO. | ISSUED FOR | DATE |
| 1 | BIDDING AND CONSTRUCTION | 07/2005 |

LANE ASSOCIATES
CONSULTING ENGINEERS, P.C.

HEATING, VENTILATION, & AIR CONDITIONING,
PLUMBING, FIRE PROTECTION, & ELECTRICAL

CHARLES F. LANE, P.E.
DANIEL W. DUPRAS, P.E.

51 KILLINGTON AVENUE,
RUTLAND, VERMONT 05701
TELEPHONE: (802)747-3346
FAX/MODEM: (802)747-3356

| | | | |
|---|---------|----------|-----|
| MECHANICAL DEMOLITION | | | |
| CAMBRIDGE AOT GARAGE VERMONT AGENCY OF TRANSPORTATION CAMBRIDGE, VERMONT | | | |
| APPR: | DWD | DRAWN: | KPC |
| SCALE: | | AS NOTED | |
| PROJ. NO. | 0912-22 | | |

M
1