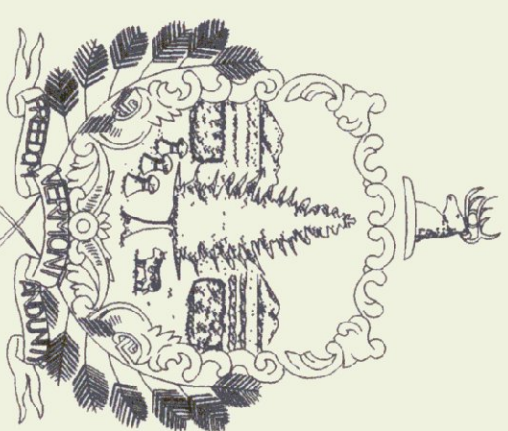


State of Vermont
Department of Buildings & General Services
**CAMBRIDGE HIGHWAY GARAGE
REROOF & RENOVATIONS**
Cambridge, Vermont

AGENCY OF ADMINISTRATION
DEPT. OF BUILDINGS & GENERAL SERVICES
2 GOVERNOR AIKEN AVENUE
MONTPELIER, VERMONT 05633-5801
THOMAS W. TORTI, COMMISSIONER



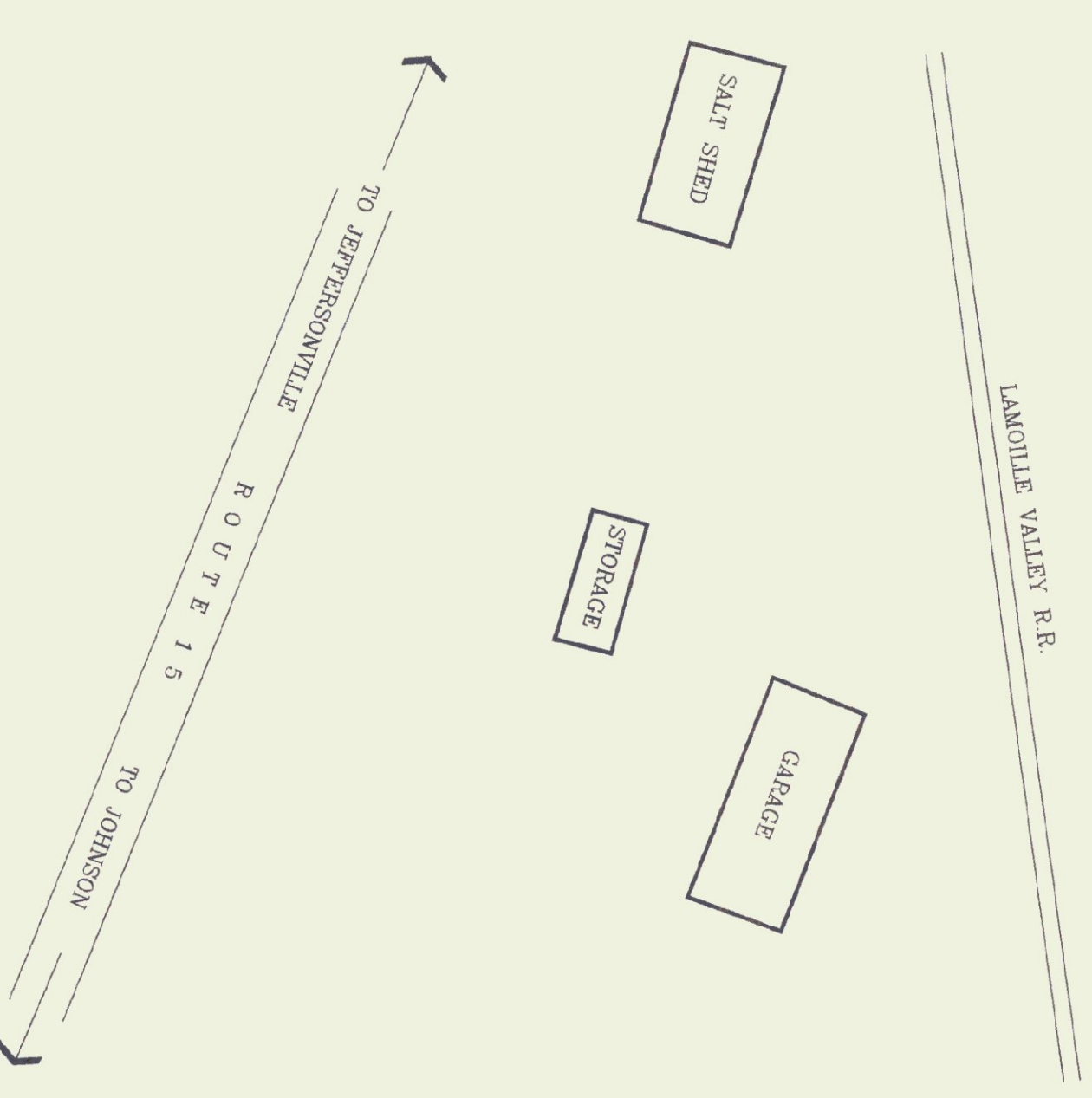
Howard Dean, M.D.
Governor

AUGUST 1998

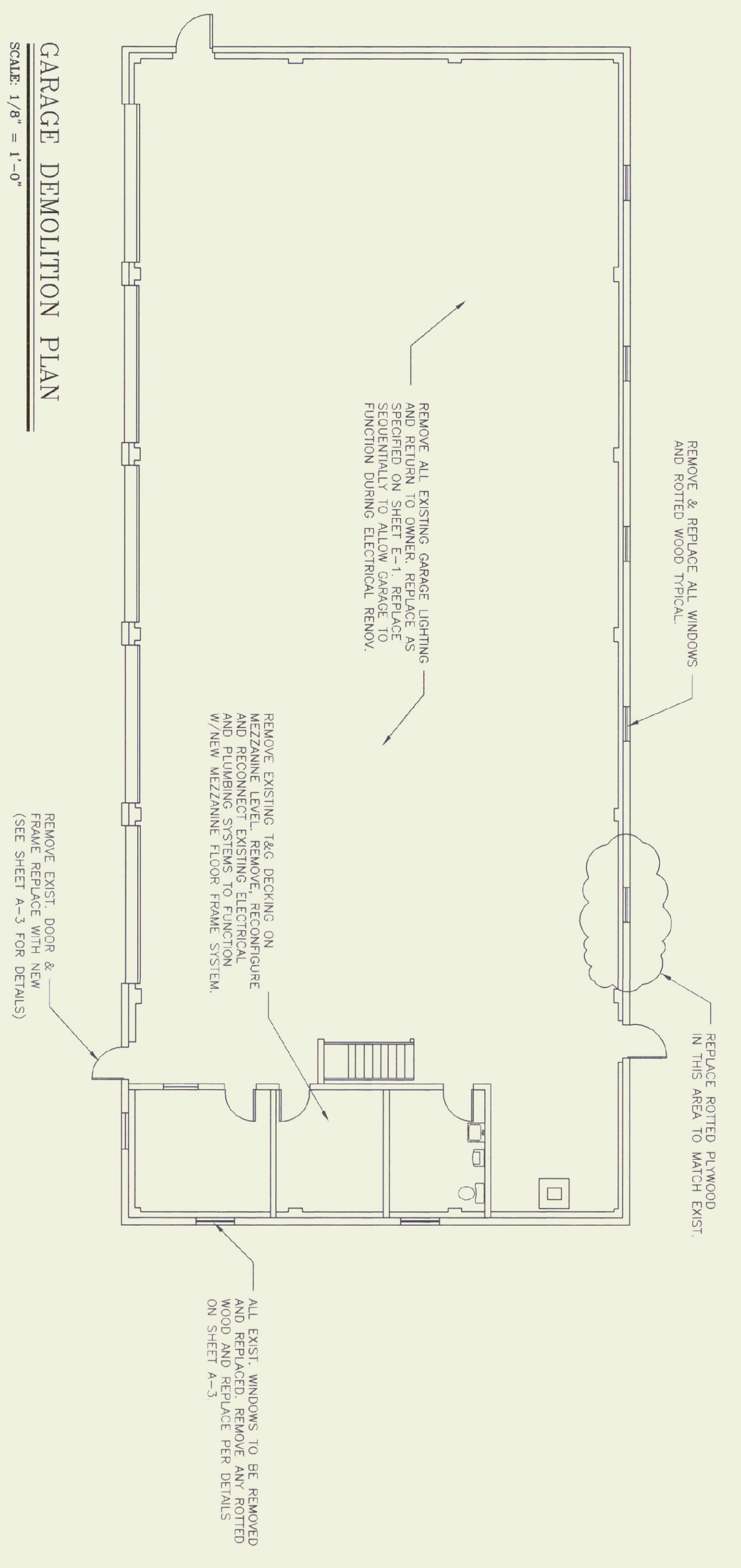
A-1	DEMOLITION PLAN & ELEVATIONS
A-2	ROOF PLAN & DETAILS & MEZZ. FRAMING
A-3	DOOR & WINDOW DETAILS & SCHEDULES
E-1	ELECTRICAL PLAN

INDEX OF SHEETS

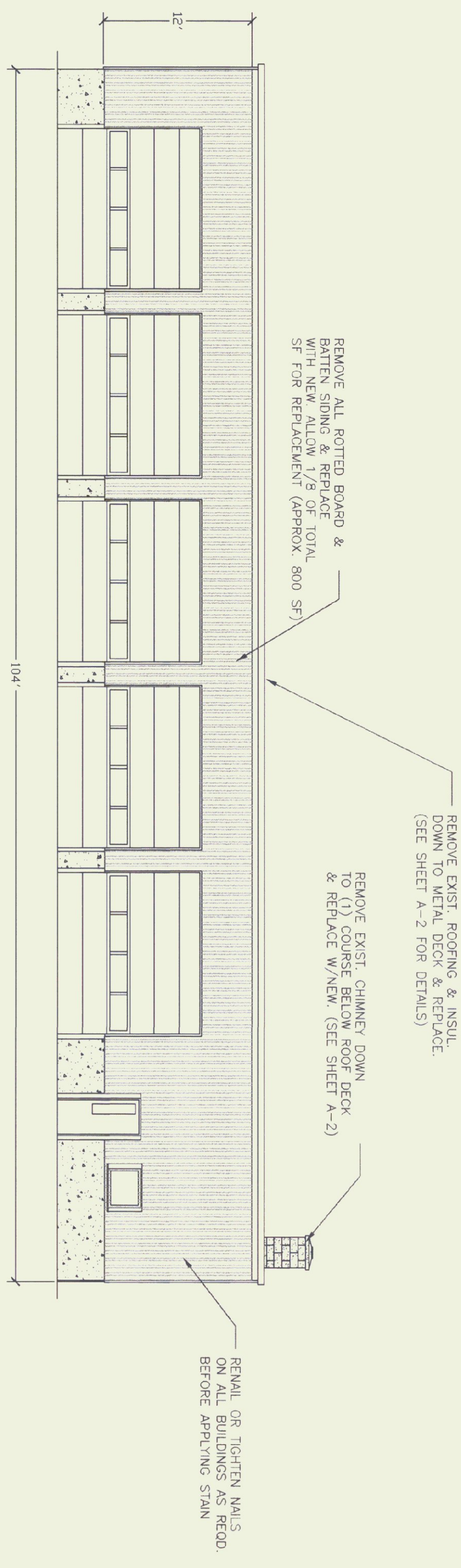
AGENCY OF TRANSPORTATION
133 STATE STREET
MONTPELIER, VERMONT 05633-5001
GLENN GERSHANECK, SECRETARY



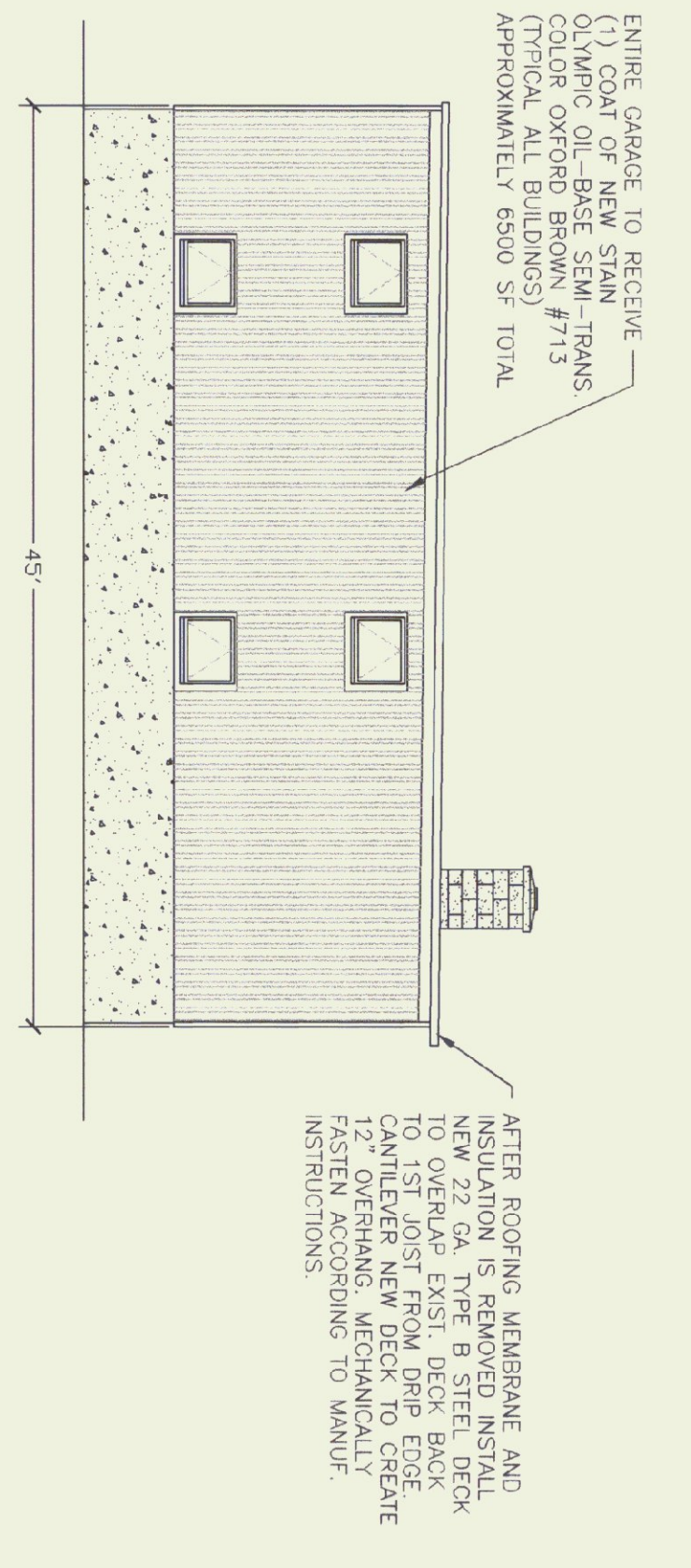
PROJECT LOCATION



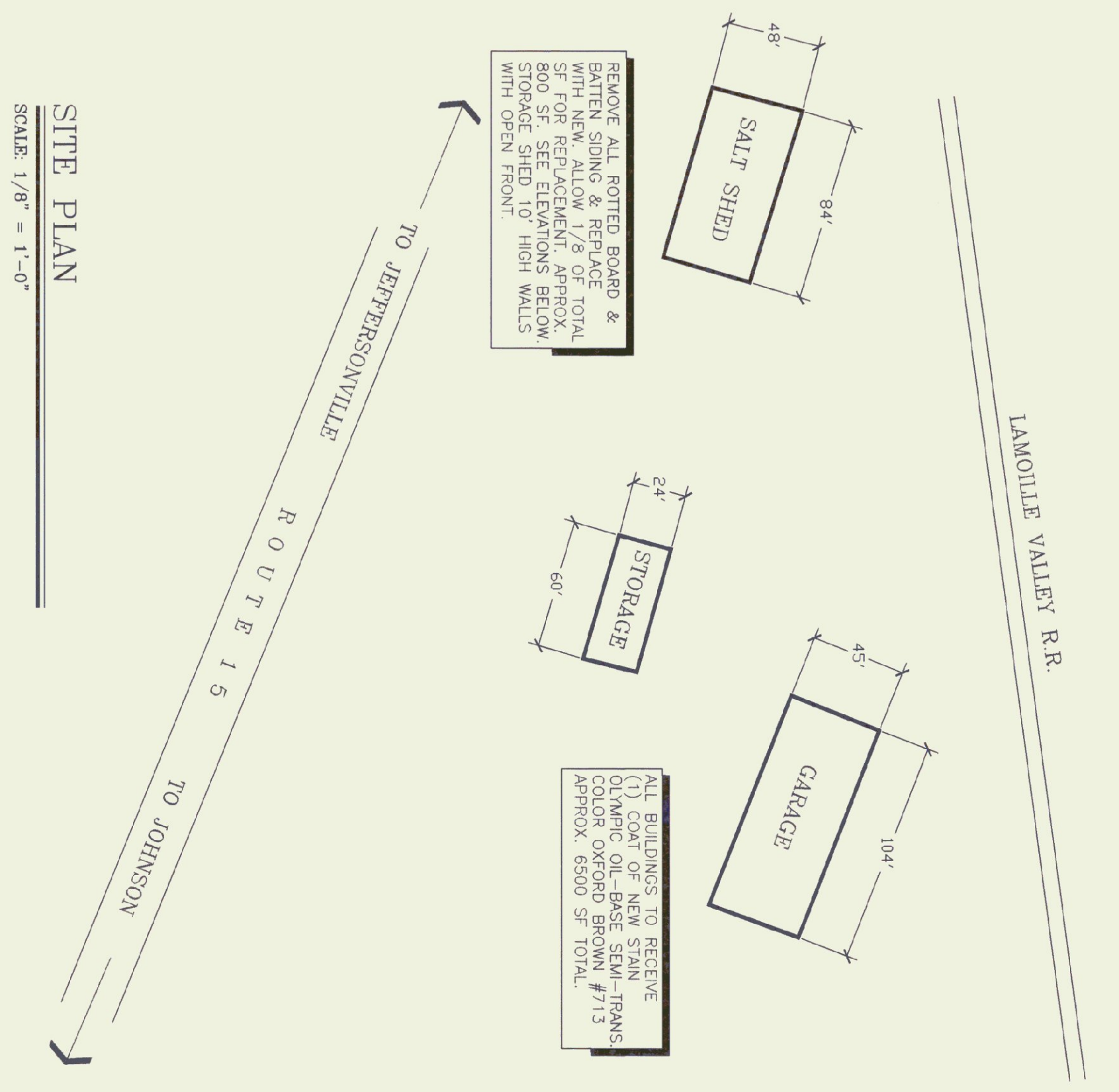
GARAGE DEMOLITION PLAN
SCALE: 1/8" = 1'-0"



GARAGE FRONT ELEVATION
SCALE: 1/8" = 1'-0"



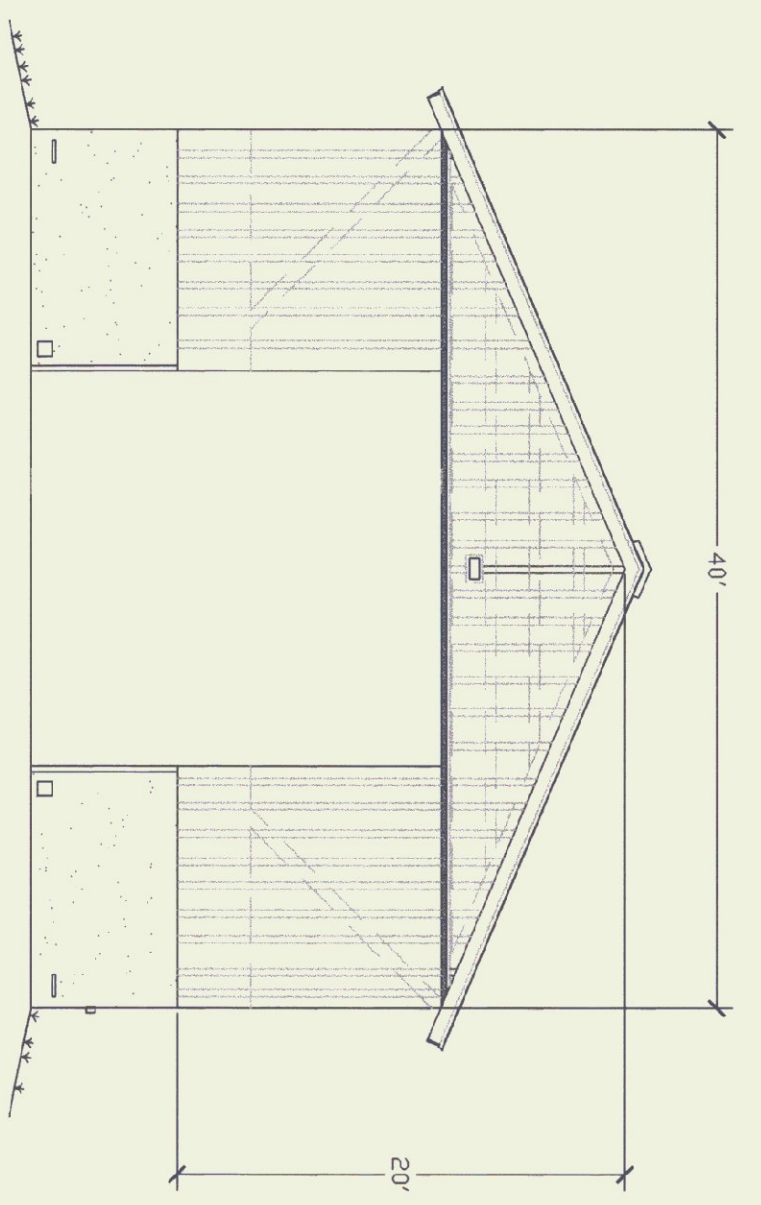
GARAGE SIDE ELEVATION
SCALE: 1/8" = 1'-0"



SITE PLAN
SCALE: 1/8" = 1'-0"



SALT SHED SIDE ELEVATION
SCALE: 1/8" = 1'-0"



SALT SHED FRONT ELEVATION
SCALE: 1/8" = 1'-0"

REVISIONS

SCALE: AS NOTED
DATE: AUG. 1998
DRAWN BY: P. MCNOY
APPR. BY:

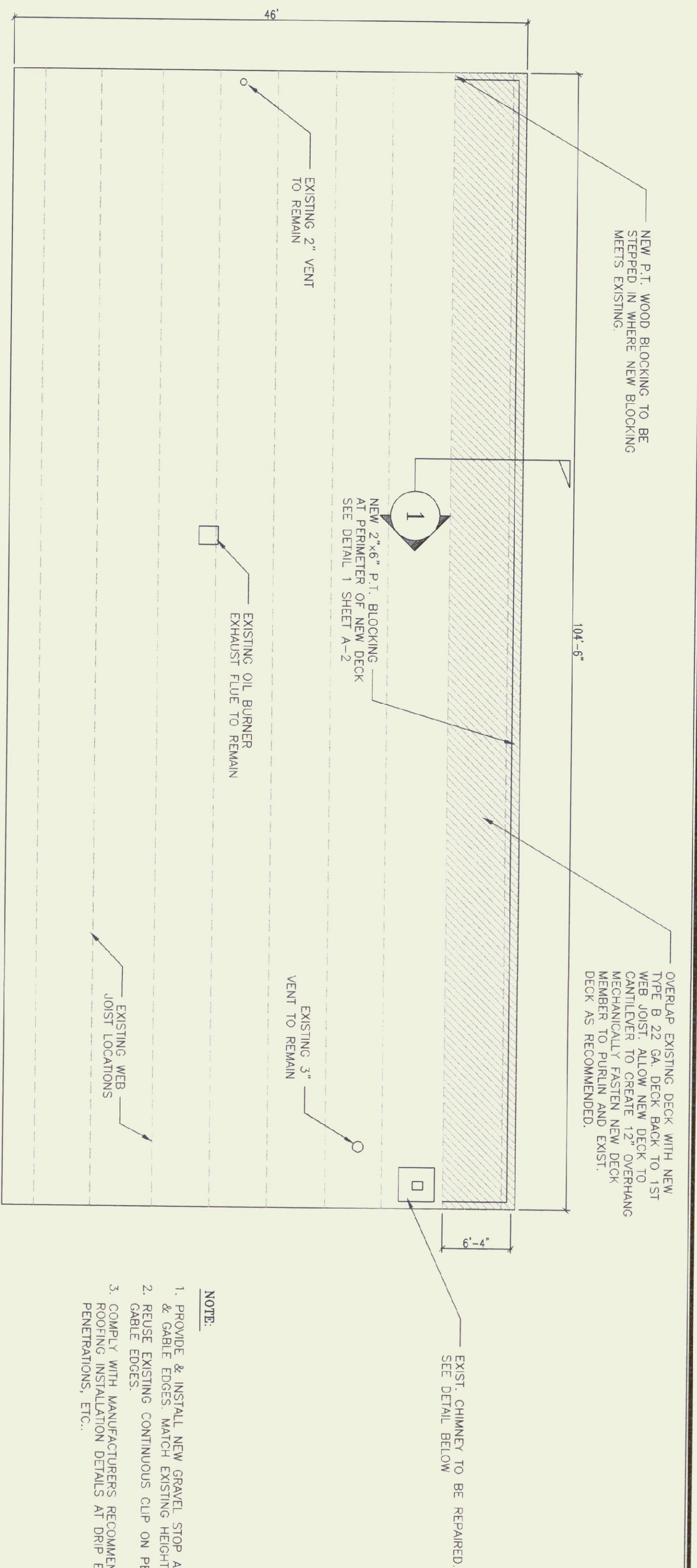
CAMBRIDGE
A.O.T.
GARAGE
RENOVATIONS

AGENCY OF TRANSPORTATION
CAMBRIDGE HIGHWAY GARAGE
REROOF & RENOVATION
CAMBRIDGE VERMONT



STATE OF VERMONT
Department of Buildings
and General Services
Agency of Administration
Montpelier, Vermont

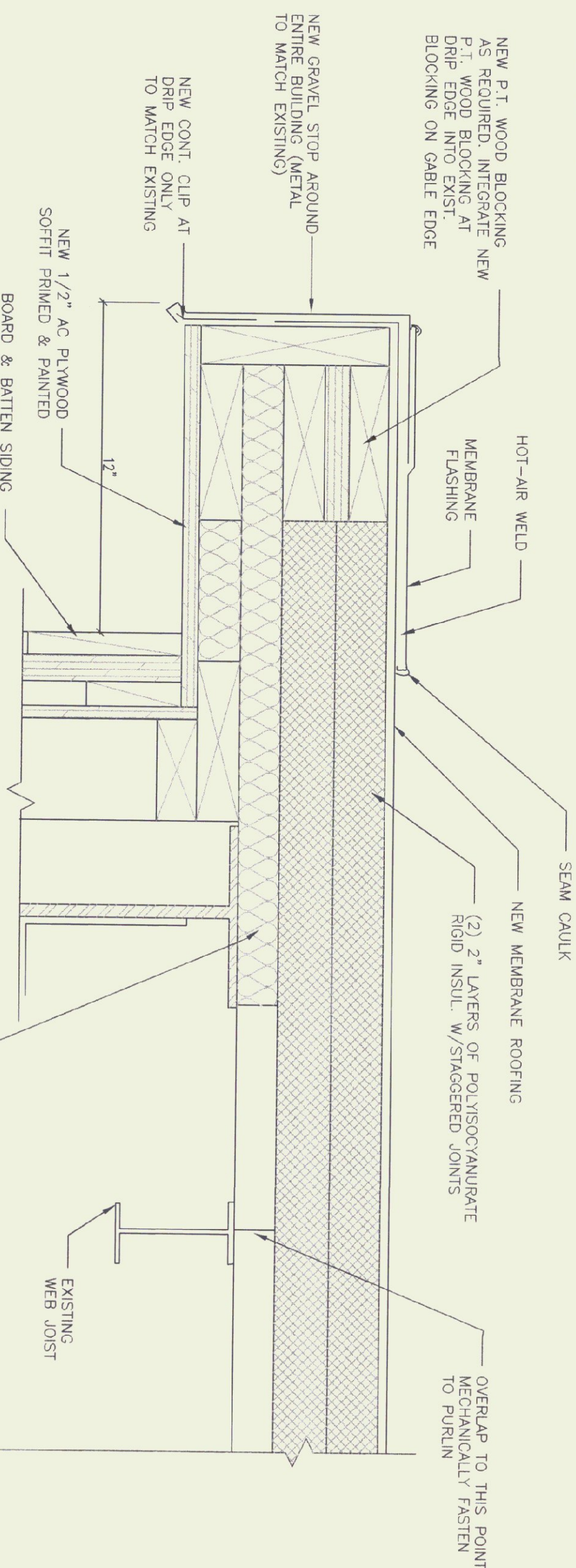




- NOTE:
1. PROVIDE & INSTALL NEW GRAVEL STOP AT PEAK & GABLE EDGES MATCH EXISTING HEIGHT AND DETAILS.
 2. REUSE EXISTING CONTINUOUS CLIP ON PEAK AND GABLE EDGES.
 3. COMPLY WITH MANUFACTURERS RECOMMENDATIONS FOR FLASHING INSTALLATION DETAILS AT DRIP EDGE, GABLE EDGE, PENETRATIONS, ETC..

ROOF PLAN

SCALE: 1/8" = 1'-0"

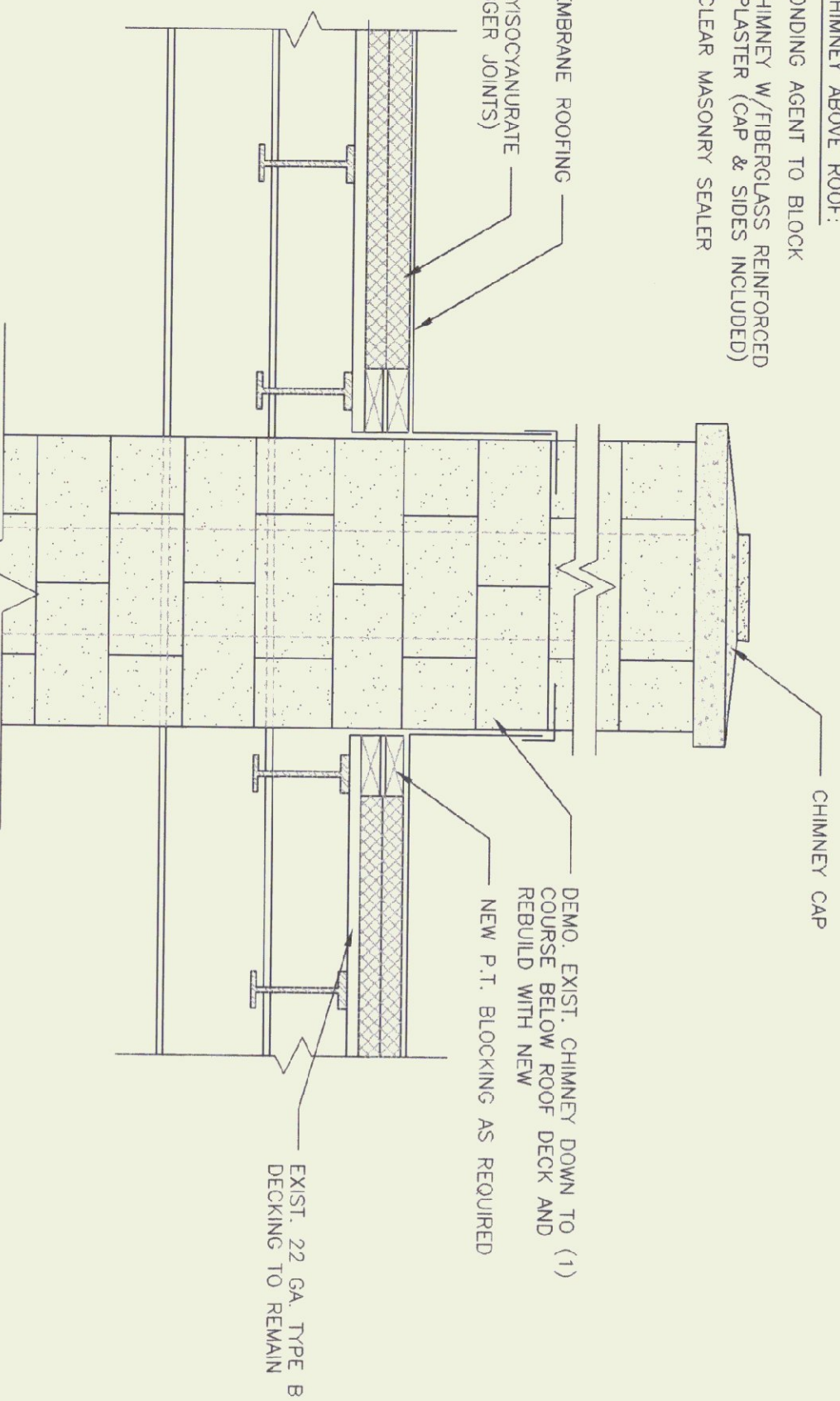


1 DETAIL @ NEW OVERHANG

SCALE: 3" = 1'-0"

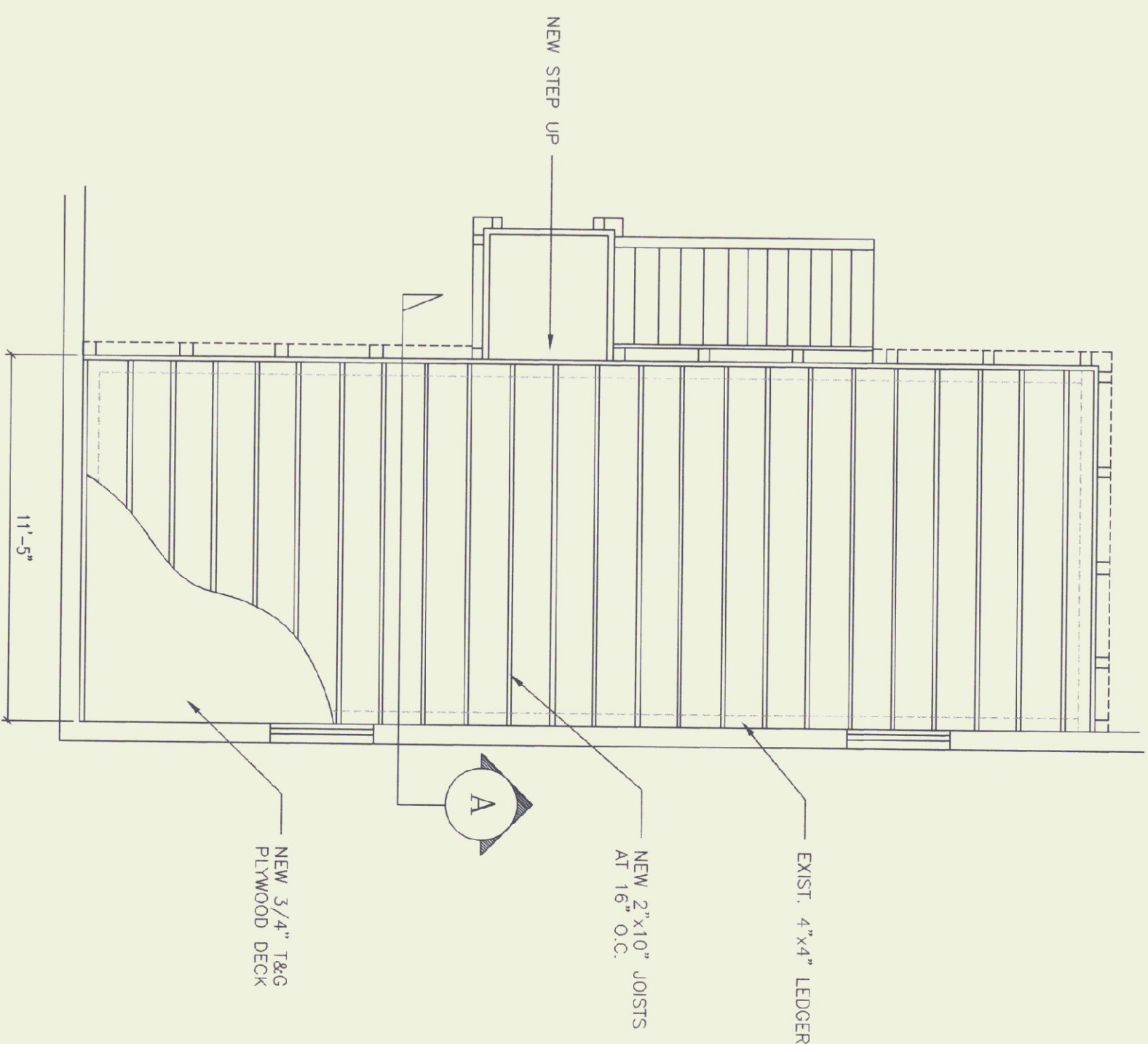
NOTES FOR CHIMNEY ABOVE ROOF:

- 1) APPLY BONDING AGENT TO BLOCK
- 2) PARGE CHIMNEY W/FIBERGLASS REINFORCED CEMENT PLASTER (CAP & SIDES INCLUDED)
- 3) SEAL W/CLEAR MASONRY SEALER



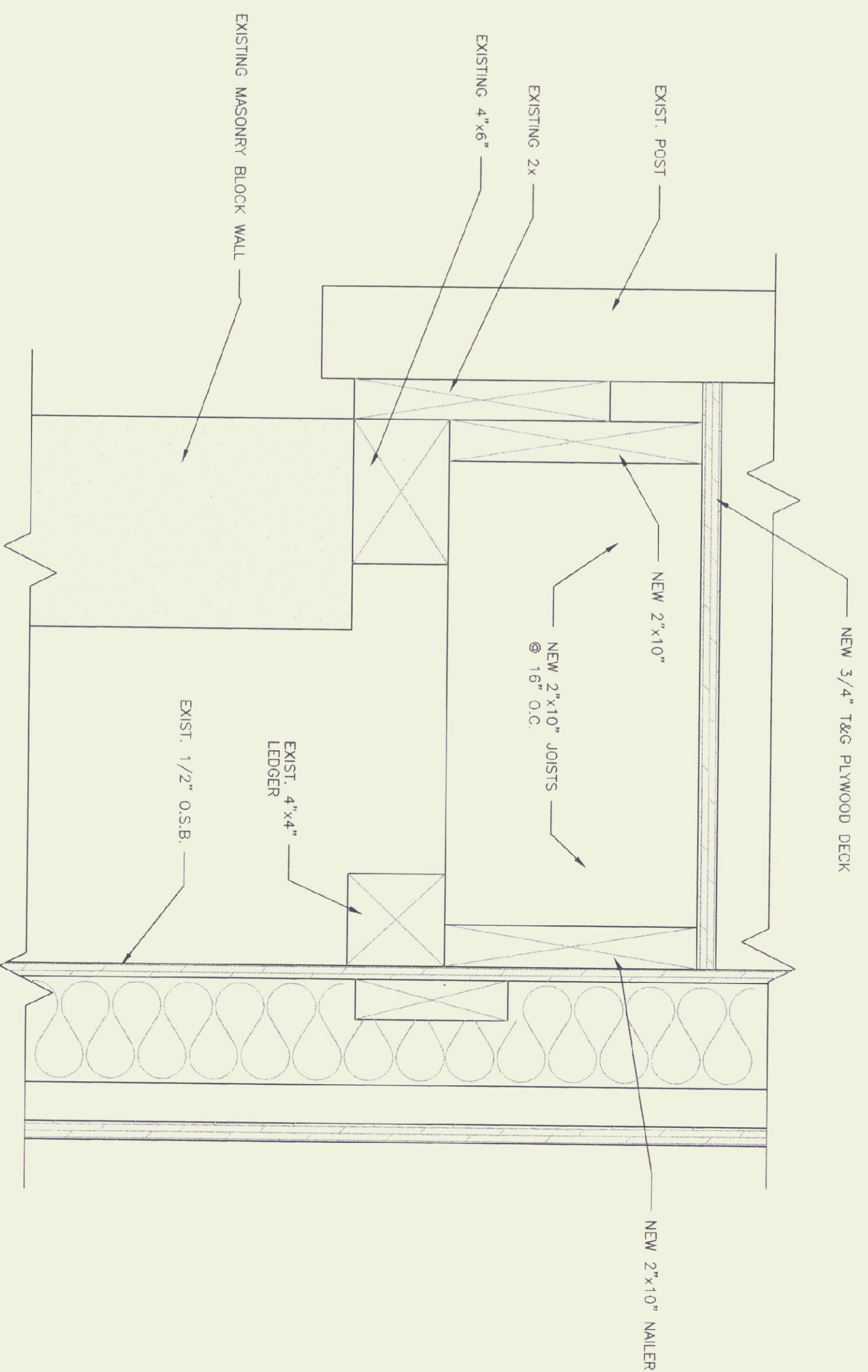
CHIMNEY/ROOFING DETAIL

SCALE: 3/4" = 1'-0"



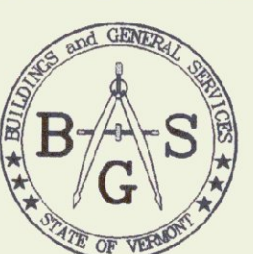
MEZZANINE FRAMING PLAN

SCALE: 1/4" = 1'-0"



A SECTION @ MEZZANINE

SCALE: 3" = 1'-0"



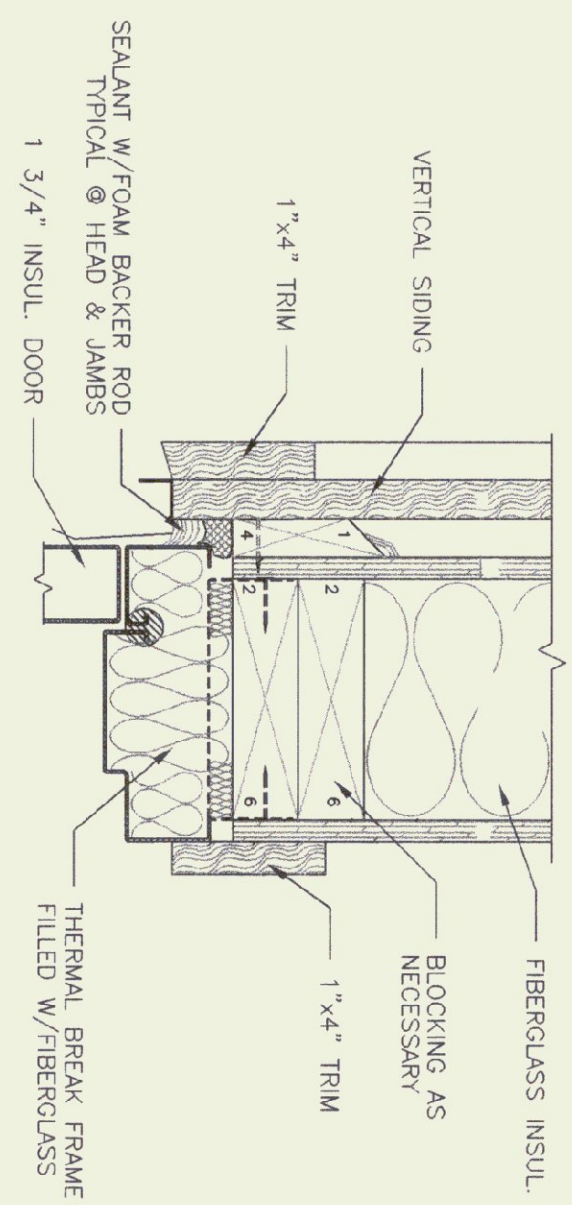
STATE OF VERMONT
Department of Buildings
and General Services
Agency of Administration
Montpelier, Vermont



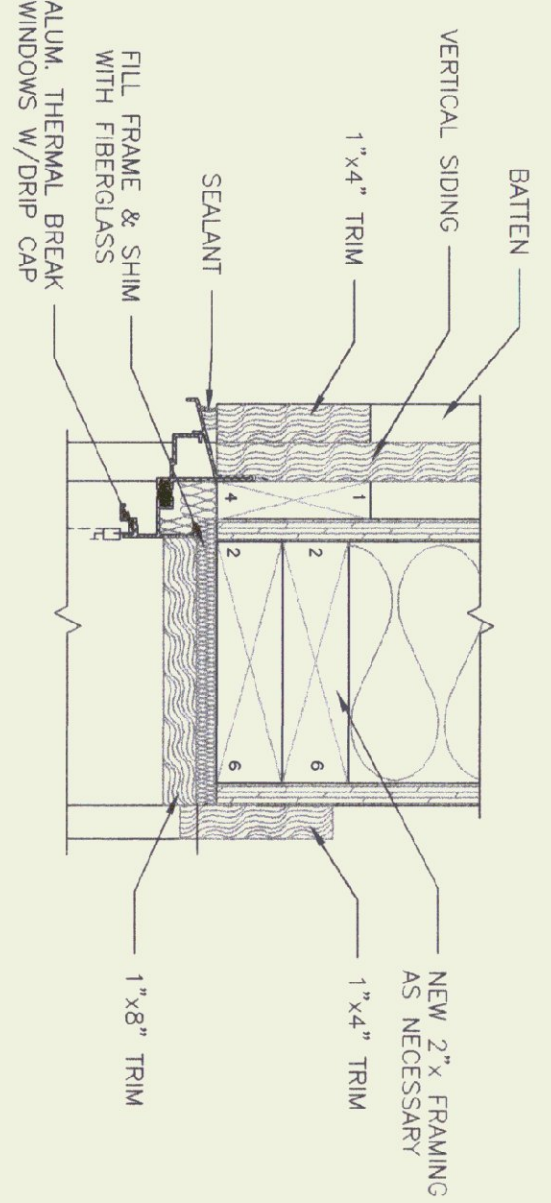
AGENCY OF TRANSPORTATION
CAMBRIDGE HIGHWAY GARAGE
REROOF & RENOVATION

REVISIONS

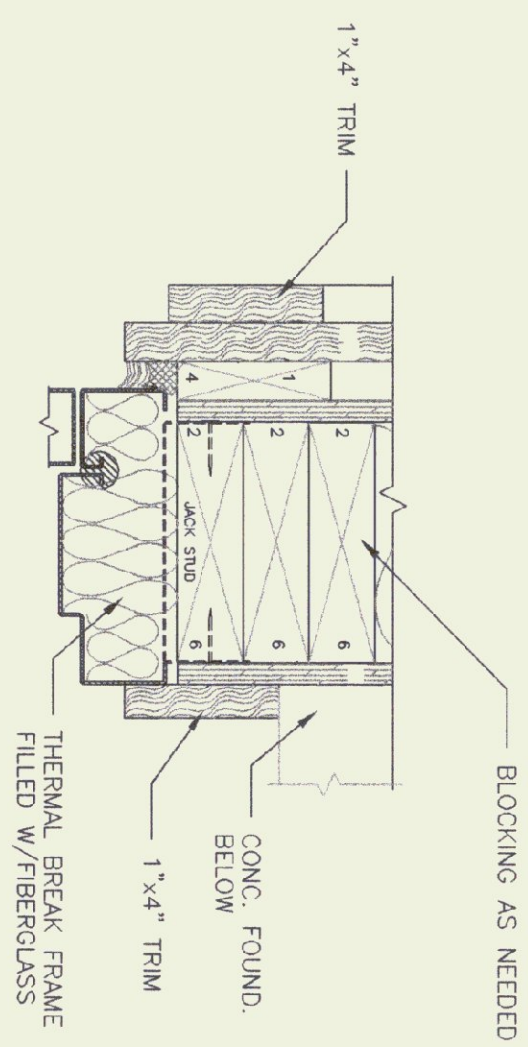
SCALE: AS NOTED
DATE: AUG. 1998
DRAWN BY: D. McAVOY
APPR. BY:



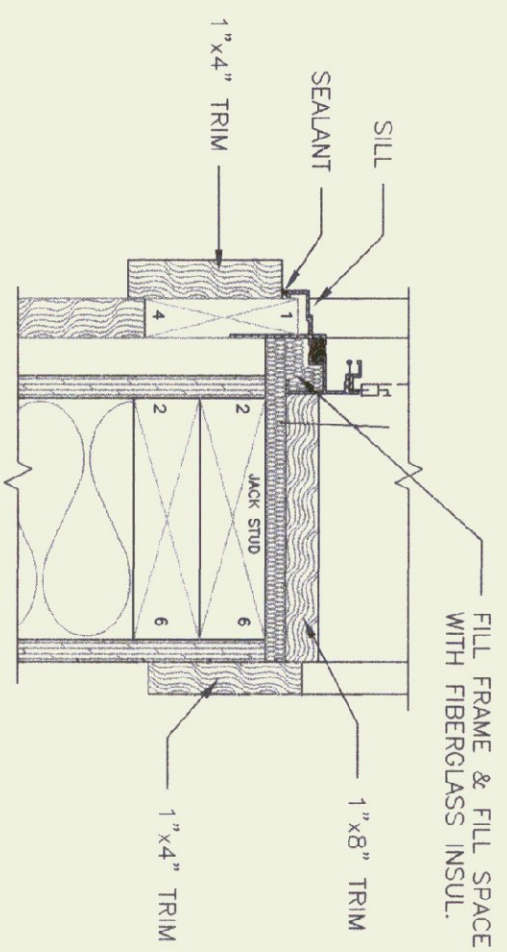
DOOR HEAD
SCALE: 3" = 1'-0"



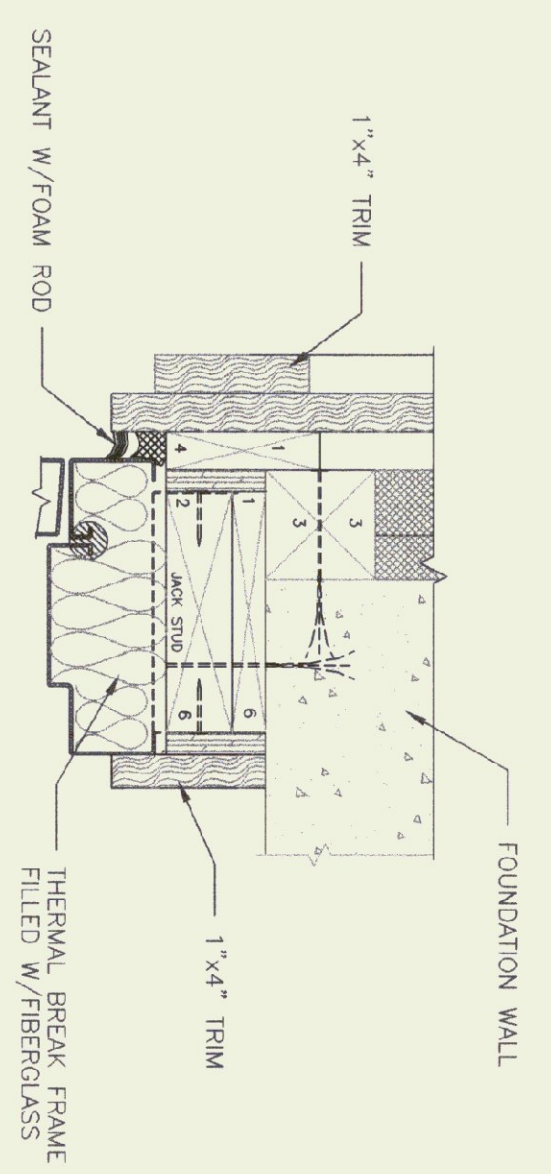
TYPICAL WINDOW HEAD
SCALE: 3" = 1'-0"



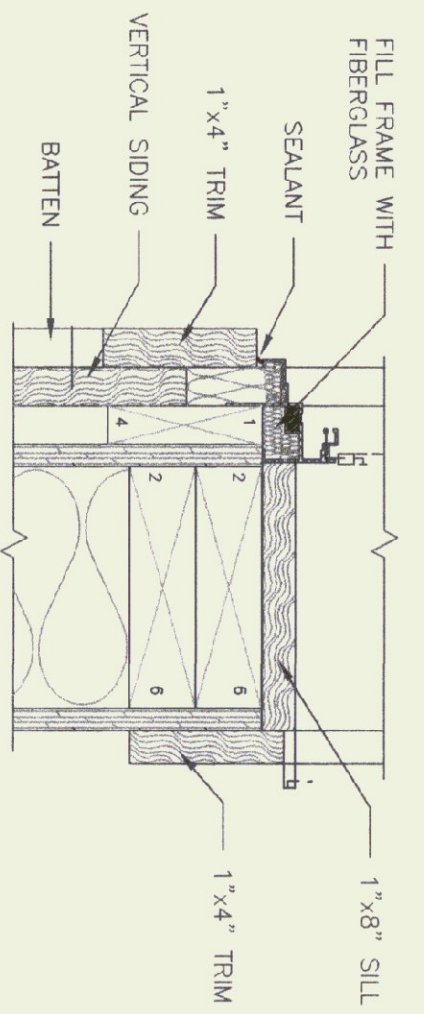
DOOR JAMB ABOVE FOUND.
SCALE: 3" = 1'-0"



TYPICAL WINDOW JAMB
SCALE: 3" = 1'-0"

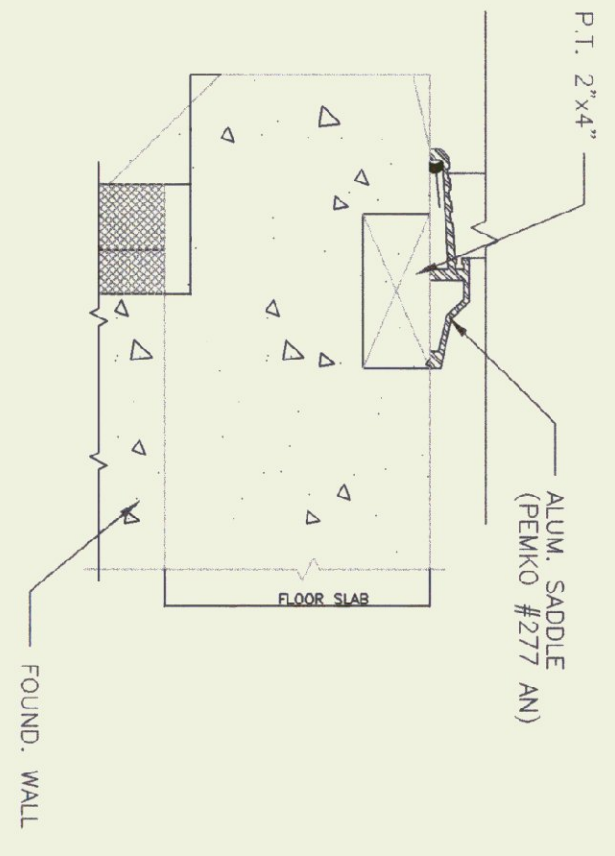


DOOR JAMB ABOVE FOUND.
SCALE: 3" = 1'-0"

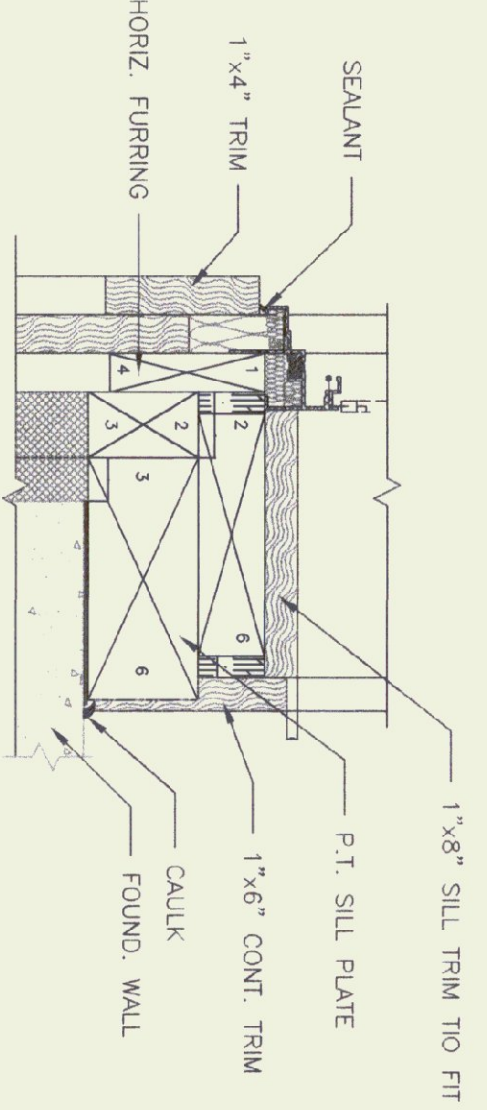


WINDOW SILL @ MEZZ. LEVEL
SCALE: 3" = 1'-0"

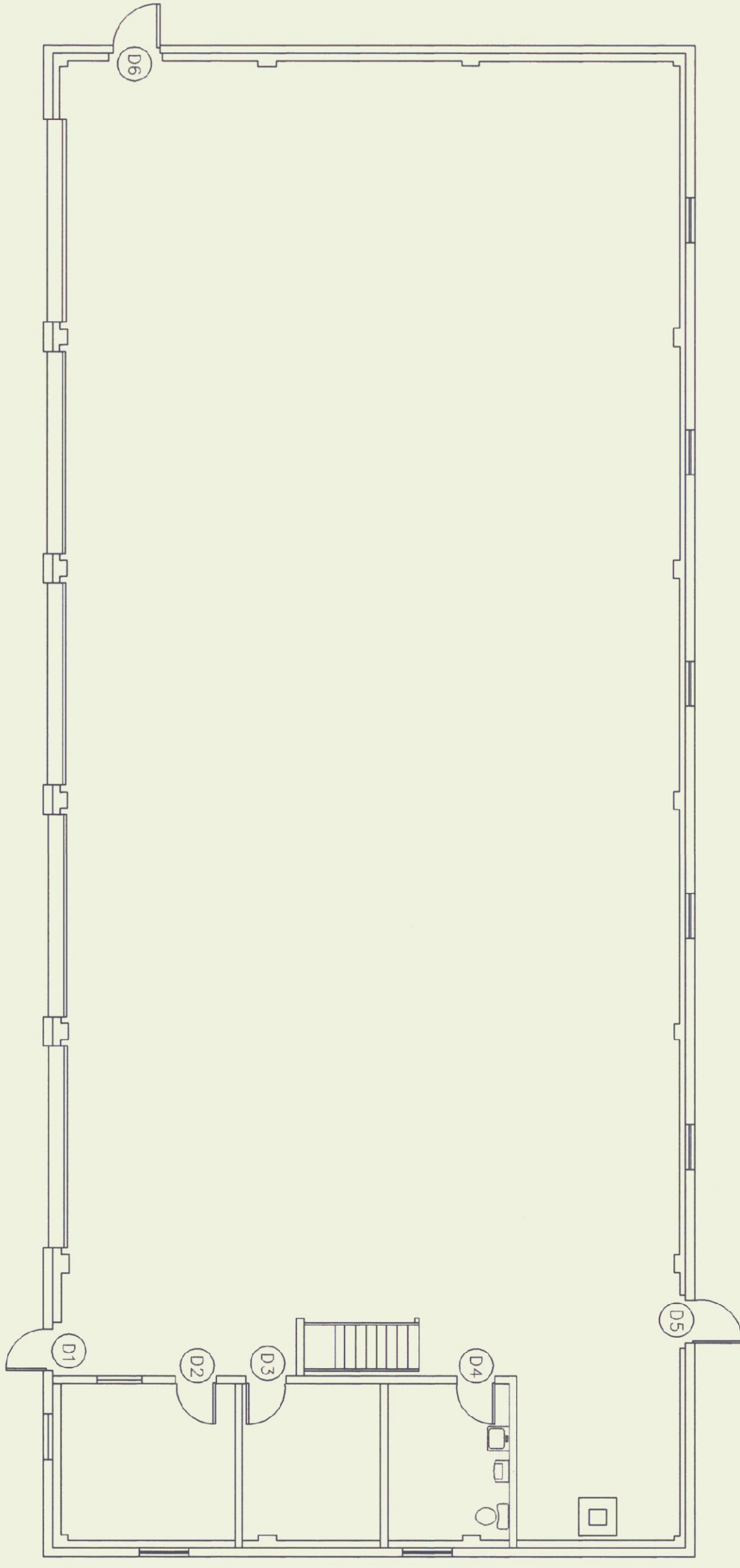
NOTE:
UTILIZE THE TYPICAL FRAMING DETAILS AROUND DOOR REPLACEMENT OR DURING NEW WINDOW INSTALLATION AS REQUIRED.



DOOR SILL
SCALE: 3" = 1'-0"



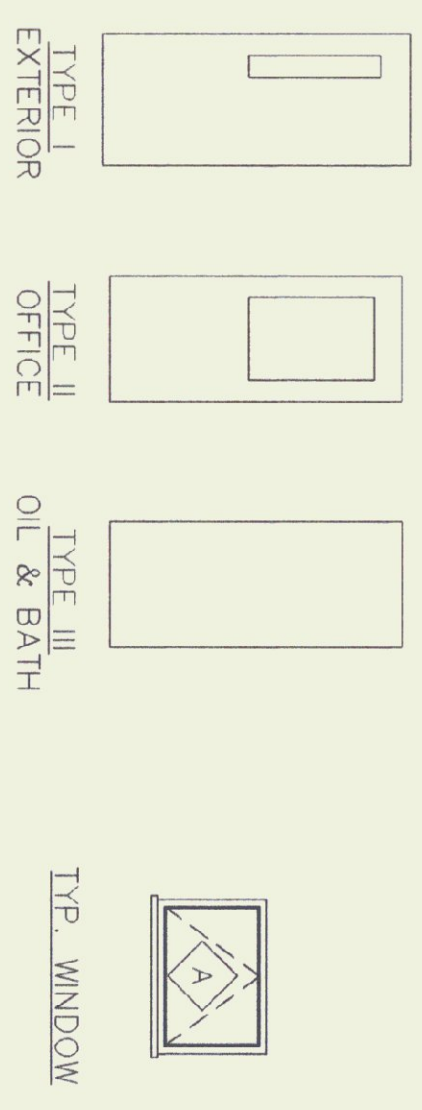
WINDOW SILL @ OFFICE
SCALE: 3" = 1'-0"



GARAGE DOOR PLAN
SCALE: 1/8" = 1'-0"

NO.	QUANTITY	SIZE	TYPE	DOOR MATERIAL	FRAME MATERIAL	HARDWARE SET #	GLAZING REQUIRED	CLOSER	REMARKS
D1	1	3'-0"x7'-0"	I	INSULATED METAL	METAL	1	6" X 48" WIRE GLASS	SARGENTS 1250 X P.A. X H.O.	THERMAL BREAK FRAME SWEEP. REUSE EXIST. CORE
D2	EXISTING	2'-8"x6'-8"	II	HOLLOW METAL	"	2	-	-	PROVIDE/INSTALL NEW LATCHSET REUSE EXIST. CORE
D3	EXISTING	2'-8"x6'-8"	III	HOLLOW METAL	"	4	-	-	PROVIDE/INSTALL NEW LATCHSET NEW CORE REQUIRED
D4	EXISTING	2'-8"x6'-8"	III	HOLLOW METAL	"	3	-	-	PROVIDE/INSTALL NEW LATCHSET REUSE EXIST. CORE
D5	EXISTING	3'-0"x7'-0"	I	INSULATED METAL	"	1	-	-	PROVIDE/INSTALL NEW LATCHSET REUSE EXIST. CORE
D6	EXISTING	3'-0"x7'-0"	I	INSULATED METAL	"	1	-	-	PROVIDE/INSTALL NEW LATCHSET REUSE EXIST. CORE

DOOR SCHEDULE



NO.	QUANTITY	TYPE	FRAME MATERIAL	ROUGH OPENING	REMARKS
A	10	AWNING	METAL	3'-4 1/2" X 2'-6 1/2"	AGORN BLDG. COMPONENTS 4300 SERIES-3420 C

WINDOW SCHEDULE

REVISIONS

SCALE: AS NOTED
DATE: AUG. 1998
DRAWN BY: P. HENNOY
APPR. BY:

AGENCY OF TRANSPORTATION
CAMBRIDGE HIGHWAY GARAGE
REROOF & RENOVATION



STATE OF VERMONT
Department of Buildings
and General Services
Agency of Administration
Montpelier, Vermont



