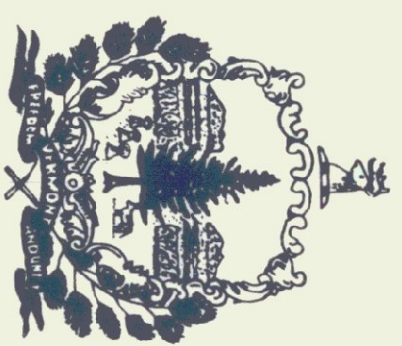


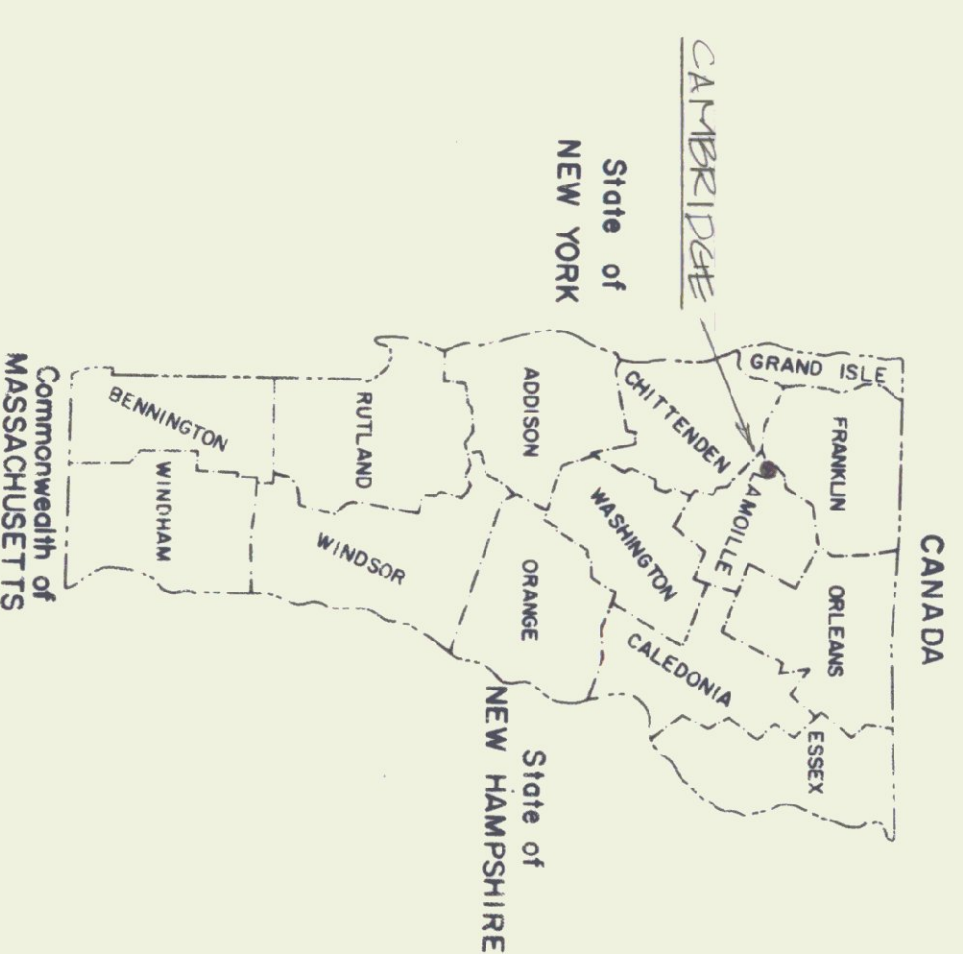
STATE OF VERMONT  
 AGENCY OF TRANSPORTATION



FIVE BAY MAINTENANCE GARAGE

CAMBRIDGE, VERMONT

DECEMBER 1982



AGENCY OF ADMINISTRATION  
 DIVISION OF STATE BUILDINGS  
 MONTPELIER, VERMONT  
 IRVING A. BATES, DIRECTOR

AGENCY OF TRANSPORTATION  
 MONTPELIER, VERMONT  
 TOM EVSLIN, SECRETARY

INDEX OF DRAWINGS

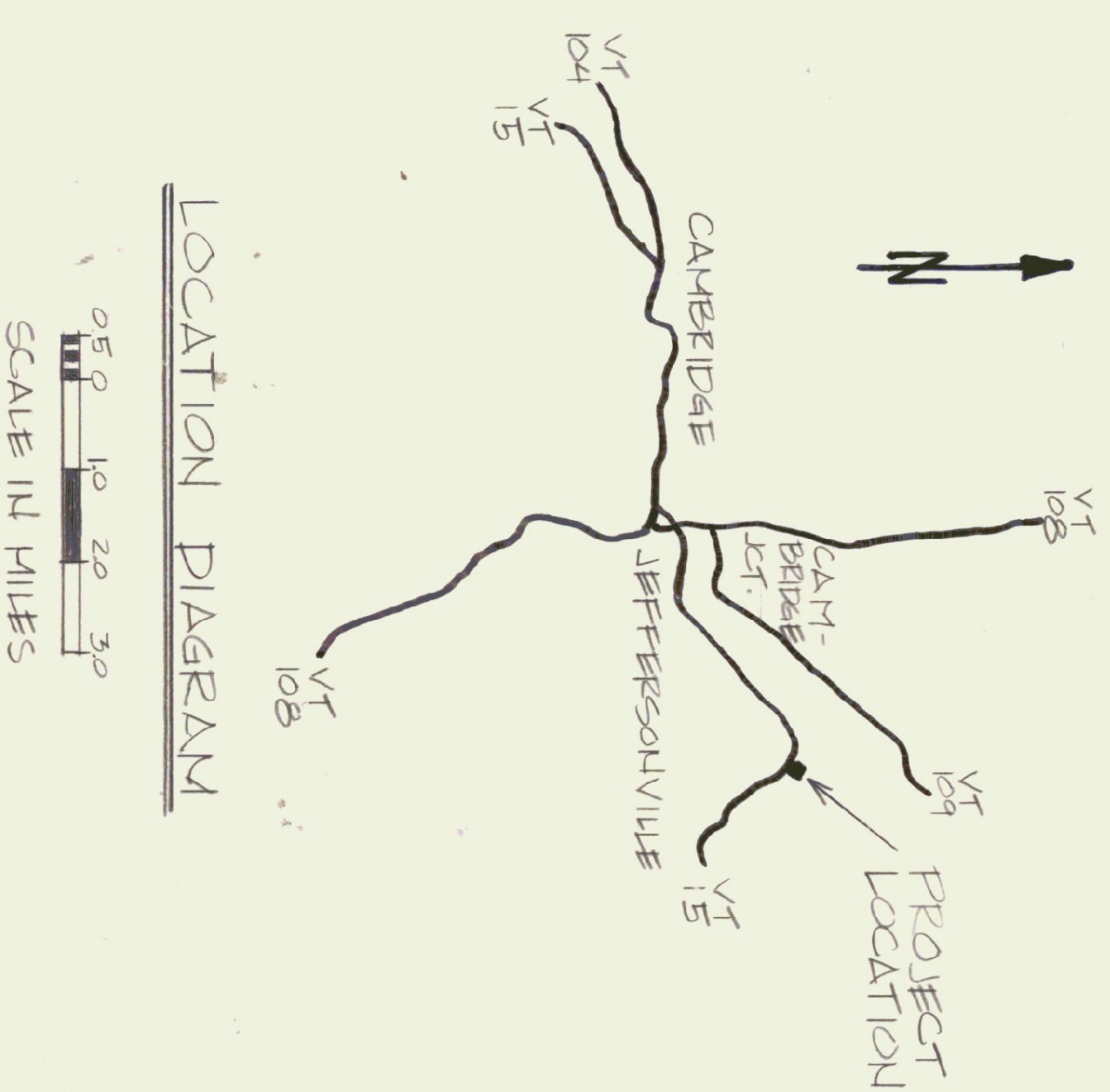
DRAWING #	TITLE
S-1	VIII SITE PLAN
A-1	VIII FOUNDATION PLAN
A-2	III STRUCTURAL STEEL FRAMING
A-3	VIII FIRST FLOOR PLAN, LOFT, SHEET SECTIONS, ROOF & WINDOW SCHEDULES
A-4	VIII ELEVATIONS
A-5	VIII INTERIOR ELEVATIONS & SECTIONS
A-6	VIII WALL SECTIONS, DOOR & WINDOW DETAILS
A-7	VIII STAIR & LOFT DETAILS
A-8	VIII SALT SHED
P-1	VIII PLUMBING
M&E-1	VIII MECHANICAL & ELECTRICAL

KEY

SYMBOL	MATERIAL
[Horizontal lines]	EARTH
[Vertical lines]	SAND
[Dotted pattern]	CONCRETE
[Cross-hatch pattern]	GRAVEL
[Diagonal lines (top-left to bottom-right)]	METAL ROOF DECKING INSULATION
[Diagonal lines (bottom-left to top-right)]	EXTRUDED STYROFOAM INSULATION - TYPE SNA DOW
[Wavy pattern]	FIBERGLASS INSULATION
[Stippled pattern]	CONTINUOUS STRUCTURAL WOOD
[Vertical lines]	DISCONTINUOUS WOOD BLOCKING
[Horizontal lines]	WOOD FACE GRAIN
[Vertical lines]	WOOD END GRAIN
[Diagonal lines (top-left to bottom-right)]	T-11 (TEXTURE 111 PLYWD) EXTERIOR SHEATHING
[Diagonal lines (bottom-left to top-right)]	OSB (ORIENTED STRAND BD) INTERIOR SHEATHING
[Cross-hatch pattern]	STEEL
[Cross-hatch pattern]	CONCRETE BLOCK

ABBREVIATIONS

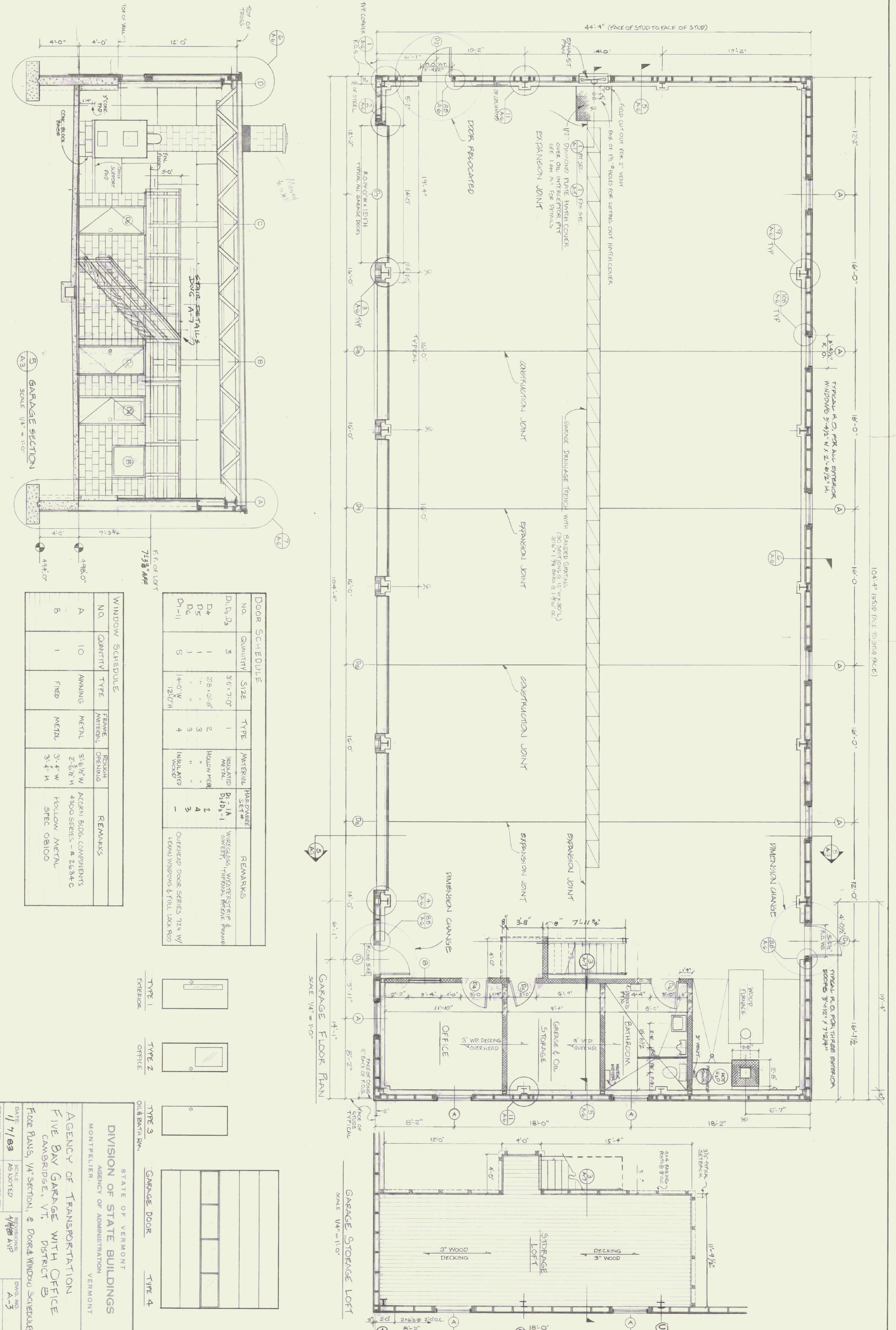
FF	FINISH FLOOR	V&H	VERTICAL & HORIZONTAL
FOF	FACE OF FOUNDATION	OC	ON CENTER
FOS	FACE OF STUDS	AB	ANCHOR BOLT
TOP	TOP OF FOOTING	NIC	NOT IN CONTRACT
HCI	HUBBLESS CAST IRON		









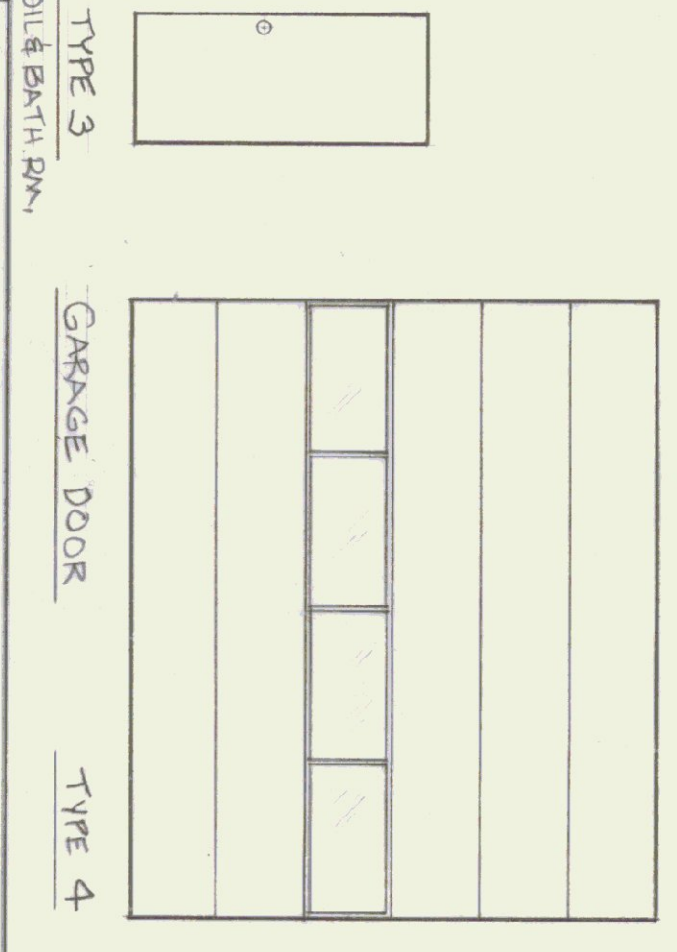
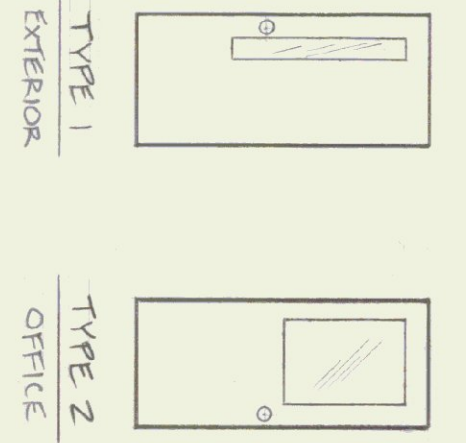


**DOOR SCHEDULE**

NO.	QUANTITY	SIZE	TYPE	MATERIAL	HASPS/SET#	REMARKS
D1, D2, D3	3	3'-0" x 7'-0"	1	INSULATED METAL	D1-D3-1	WIRE GLASS, WEATHERSTRIP & SWEEP
D4	1	2'-8" x 6'-8"	2	HOLLOW METAL	2	
D5	1	"	3	"	3	
D6	1	"	3	"	3	
D7-11	5	1'-4" x 7'-0"	4	INSULATED WOOD	-	OVERHEAD DOOR SERIES 724 W/ LEAN WINDOWS & FULL LXXX ROD

**WINDOW SCHEDULE**

NO.	QUANTITY	TYPE	FRAME MATERIAL	ROUGH OPENING	REMARKS
A	10	AWNING	METAL	3'-6 1/2" W x 2'-6 1/2" H	ACORN BLDG. COMPONENTS 4300 SERIES - # 2634C
B	1	FIXED	METAL	3'-4" W x 3'-4" H	HOLLOW METAL SPEC 08100



STATE OF VERMONT  
 DIVISION OF STATE BUILDINGS  
 AGENCY OF ADMINISTRATION  
 MONTPELIER, VERMONT

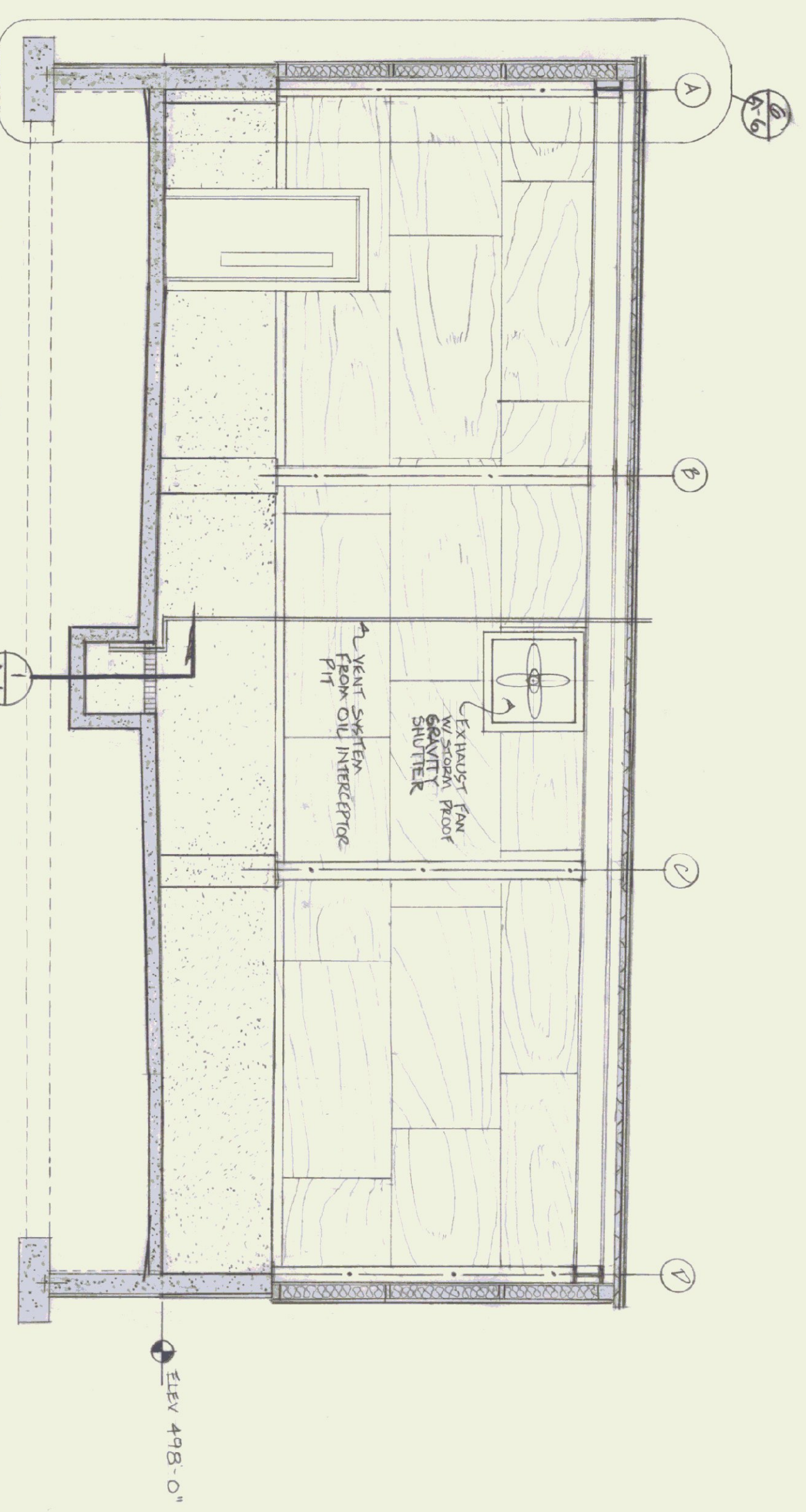
AGENCY OF TRANSPORTATION  
 FIVE BAY GARAGE WITH OFFICE  
 CAMBRIDGE, VT, DISTRICT B

FLOOR PLANS, 1/4" SECTION, & DOOR & WINDOW SCHEDULES

DATE: 11/1/83  
 DRAWN BY: J. OSTRUM  
 SCALE: AS NOTED  
 APPROVED BY: [Signature]  
 REVISIONS: 4/1/88 AVP  
 DWG. NO.: A-3  
 4 OF 11



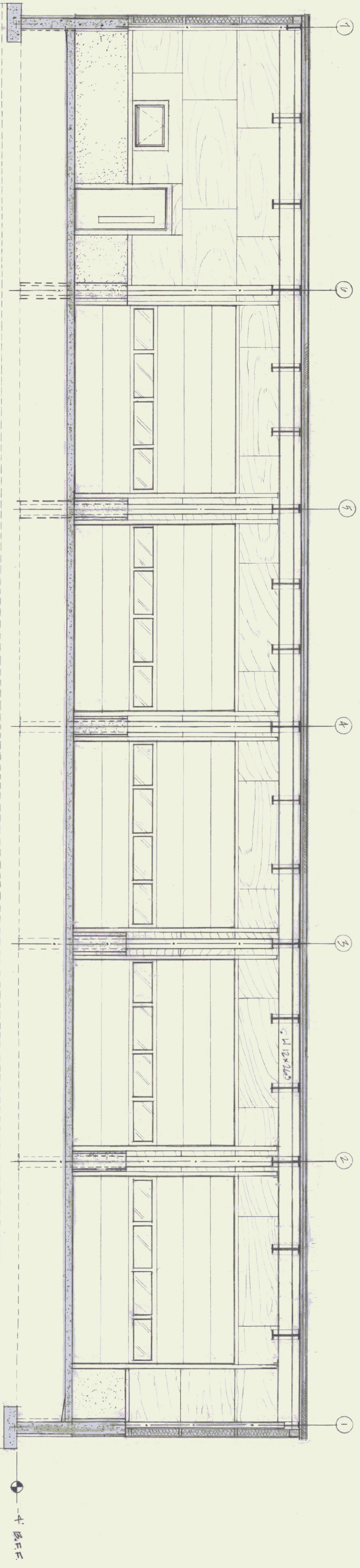
CROSS SECTION  
SCALE: 1/4" = 1'-0"



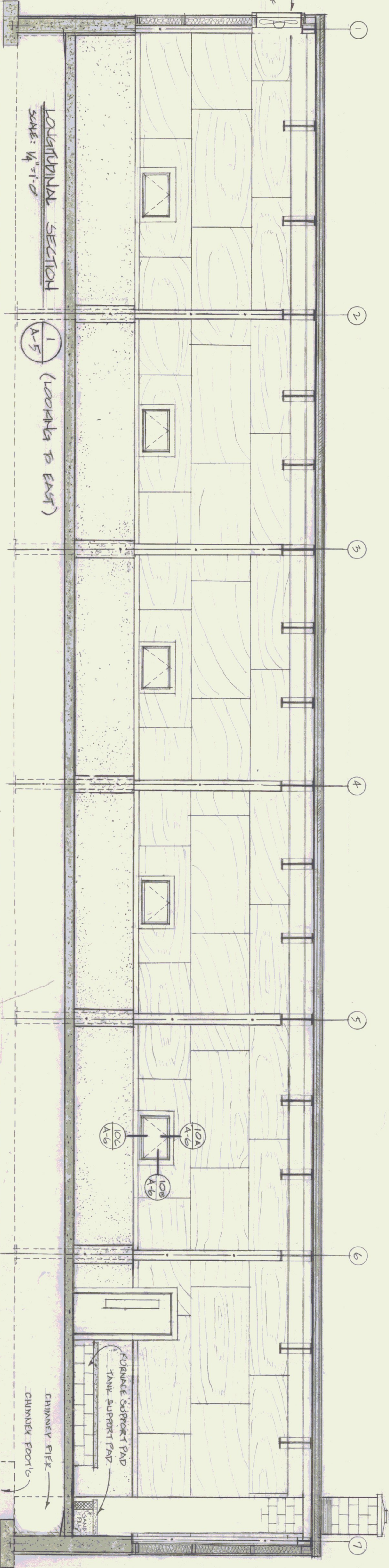
ROOF PLAN  
SCALE: 1/8" = 1'-0"



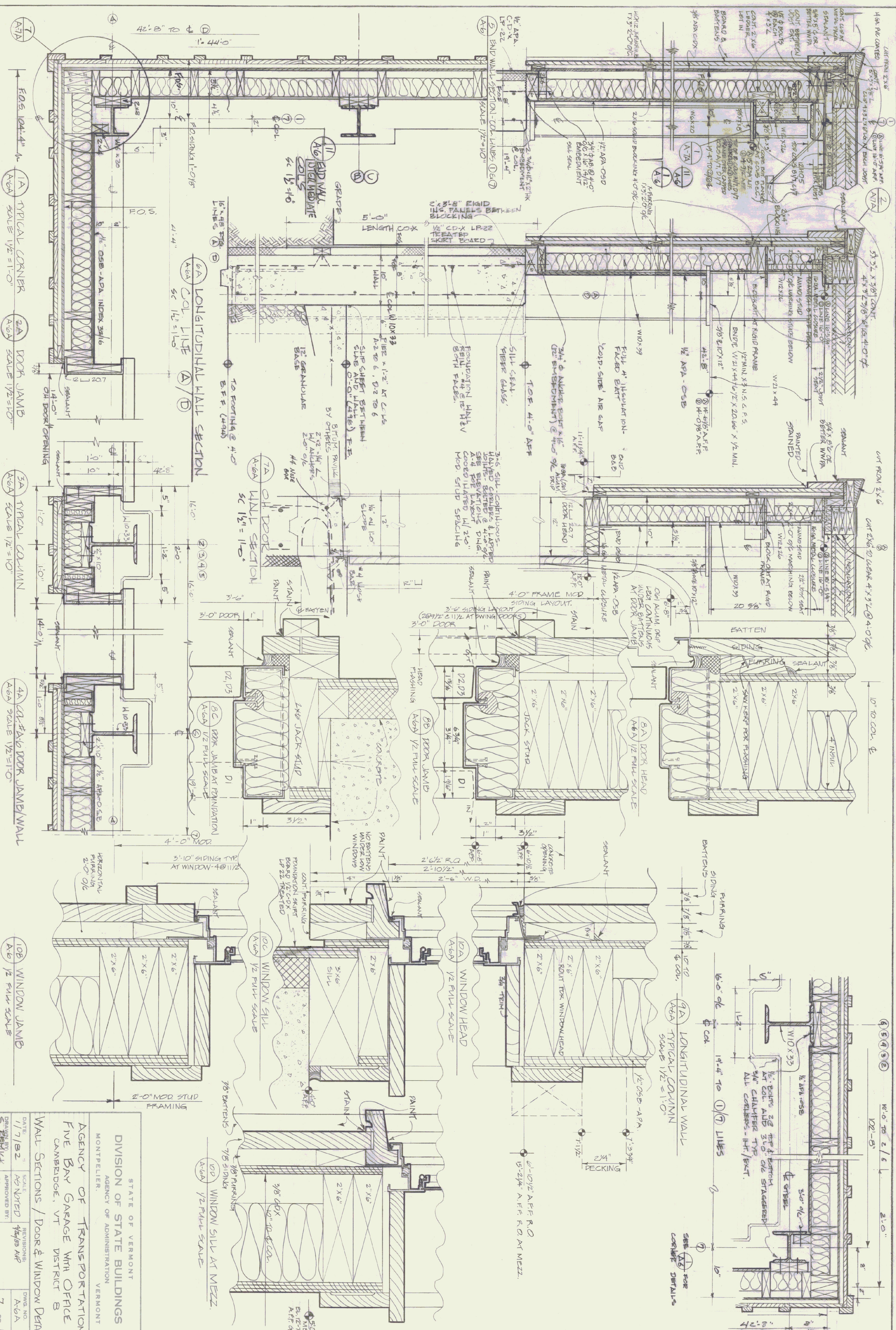
LONGITUDINAL SECTION 2  
SCALE 1/4" = 1'-0" (LOOKING TO WEST)



LONGITUDINAL SECTION 1  
SCALE: 1/4" = 1'-0" (LOOKING TO EAST)



STATE OF VERMONT		DATE: 11/6/83		DWS. NO. A-5	
DIVISION OF STATE BUILDINGS		SCALE: AS NOTED		REV. NO. A-5	
AGENCY OF ADMINISTRATION		APPROVED BY: RIG		6 OF 11	
MONTPELIER, VERMONT		AGENCY OF TRANSPORTATION			
FIVE BAY GARAGE WITH OFFICE				CAMBRIDGE, VT DISTRICT 8	
INTERIOR ELEVATIONS & SECTIONS					



STATE OF VERMONT  
 DIVISION OF STATE BUILDINGS  
 AGENCY OF ADMINISTRATION  
 MONTPELIER, VERMONT

AGENCY OF TRANSPORTATION  
 FIVE BAY GARAGE WITH OFFICE  
 CAMBRIDGE, VT DISTRICT B

WALL SECTIONS / DOOR & WINDOW DETAILS

DATE	1/7/82	SCALE	AS NOTED	REVISIONS	DWG. NO.
DRAWN BY	SEWELL	APPROVED BY	4/8/82 AP	A-6A	7 OF 11

- 1A TYPICAL CORNER SCALE 1/2"=1'-0"
- 2A DOOR JAMB SCALE 1/2"=1'-0"
- 3A TYPICAL COLUMN SCALE 1/2"=1'-0"
- 4A COL. #16 DOOR JAMB/WALL SCALE 1/2"=1'-0"
- 6A LONGITUDINAL WALL SECTION SC 1/2"=1'-0"
- 10A WINDOW HEAD A-6A 1/2 FULL SCALE
- 10B WINDOW JAMB A-6 1/2 FULL SCALE

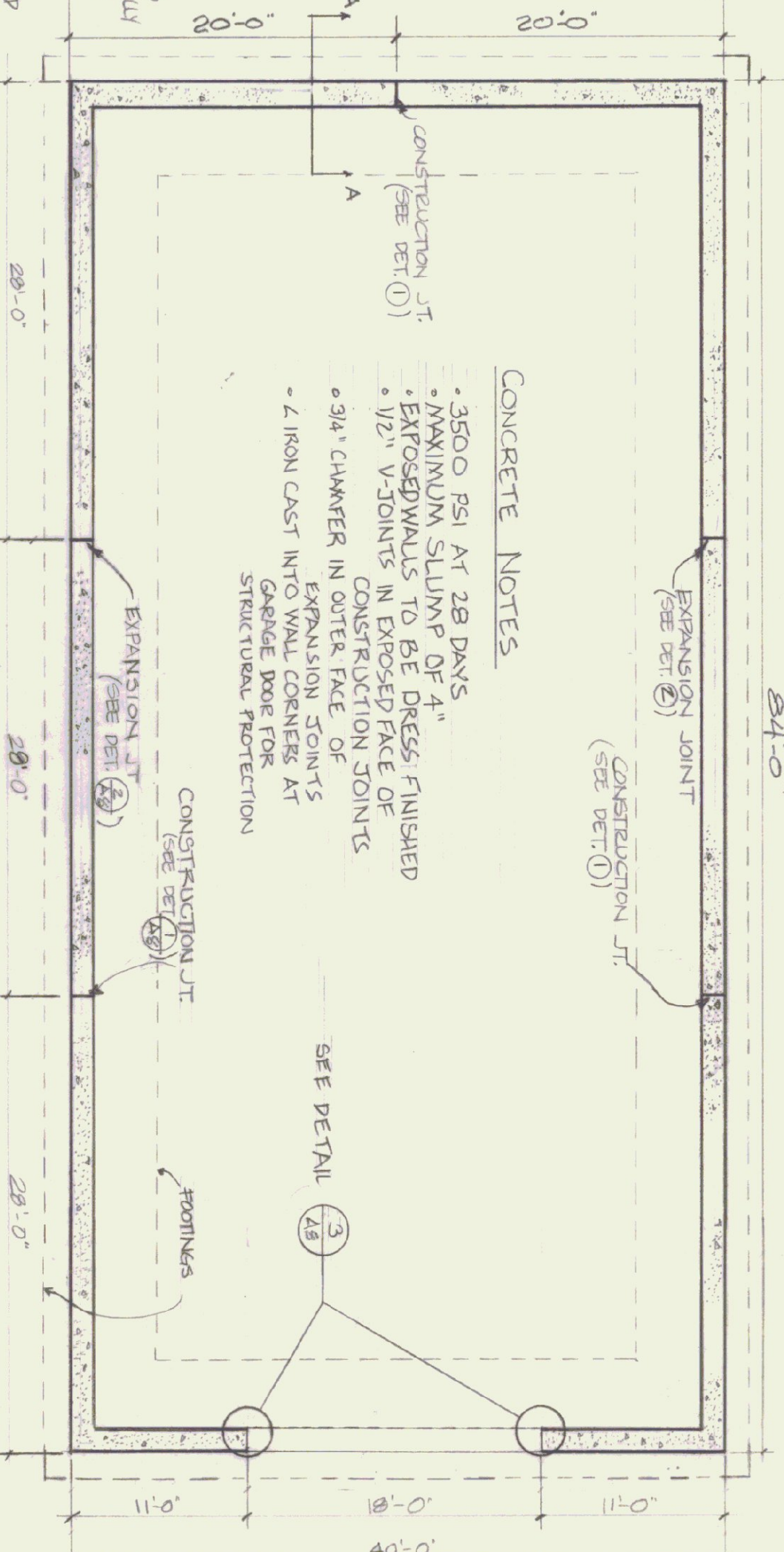
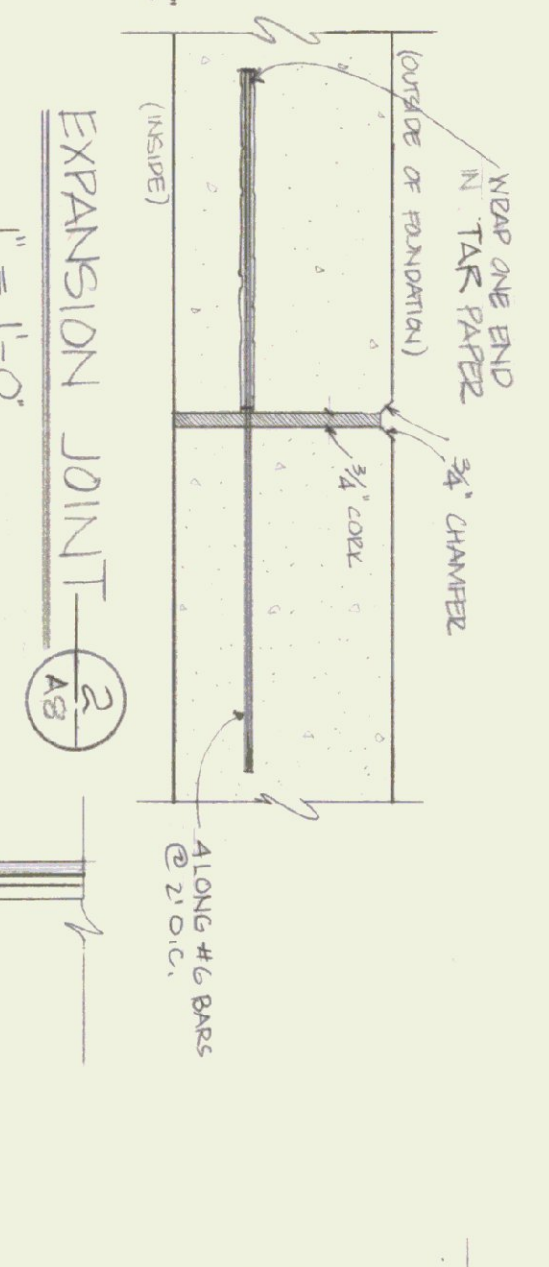
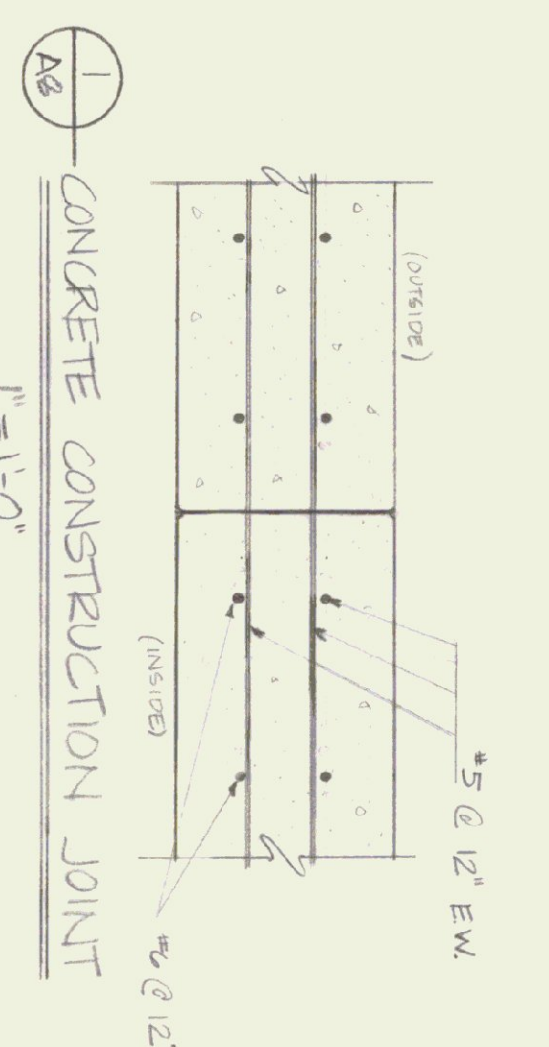
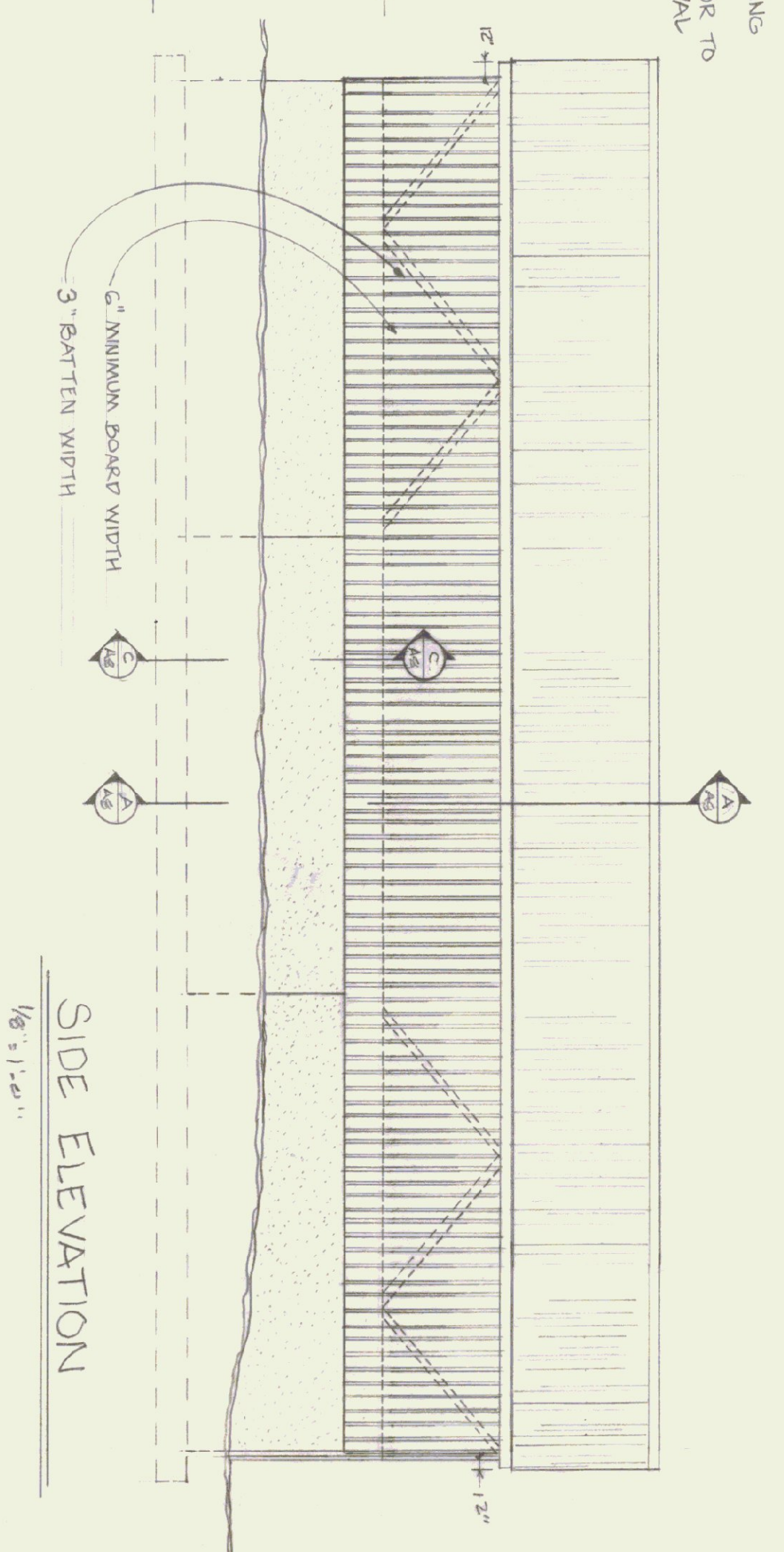
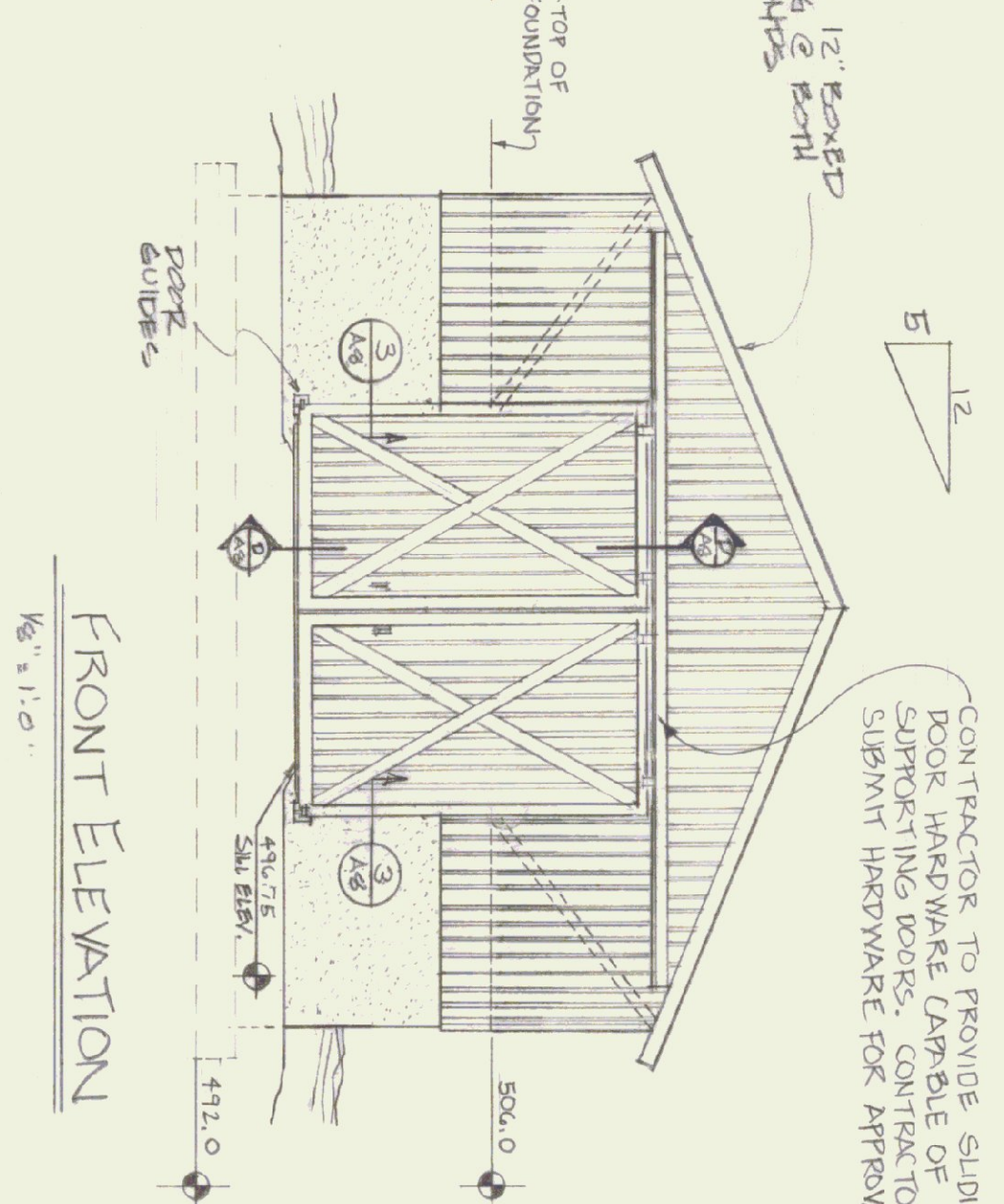
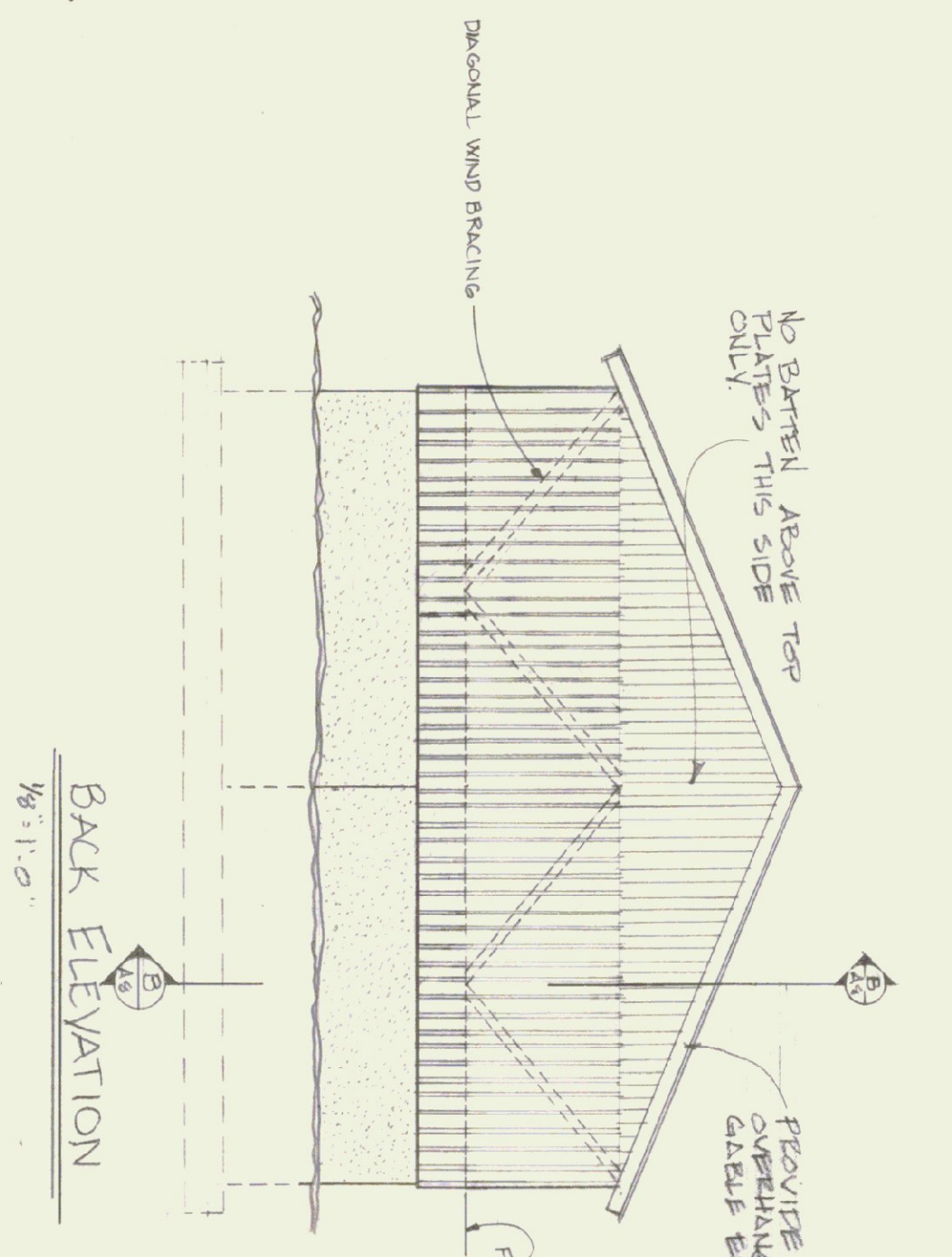
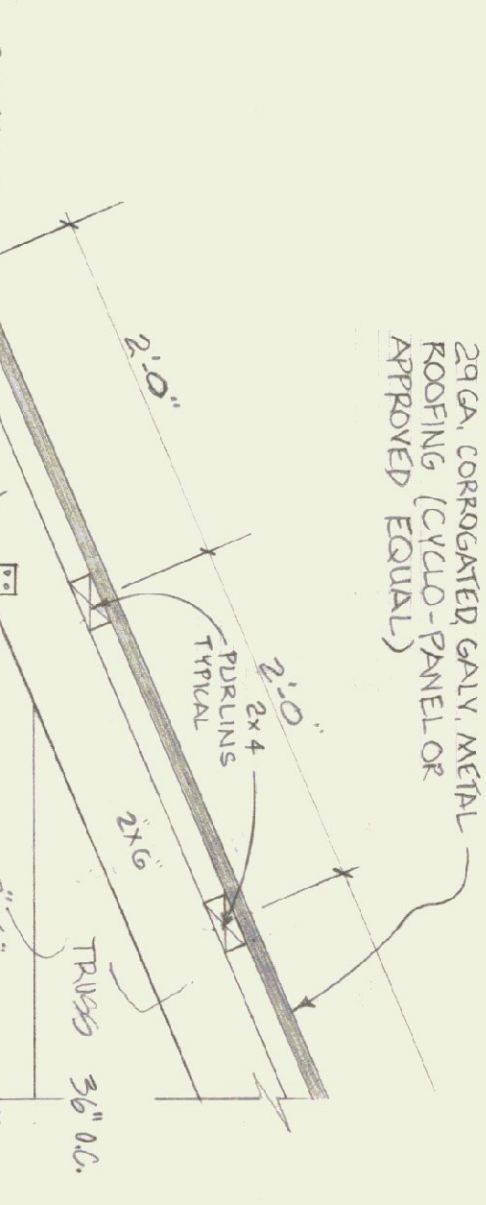
10'-0" TO 2'-6"  
 102'-0"  
 2'-0"



**LUMBER NOTES**

- FRAMING MEMBERS TO BE KILN DRIED
- CONSTRUCTION GRADE LUMBER
- BOARD & BATTEN SING TO BE NATIVE
- ROUGH SAWN WHITE PINE
- BOARD WIDTH 6" MINIMUM
- BATTEN WIDTH 3"
- ALL PLATES & NAILERS IN CONTACT WITH CONCRETE TO BE CCA TREATED

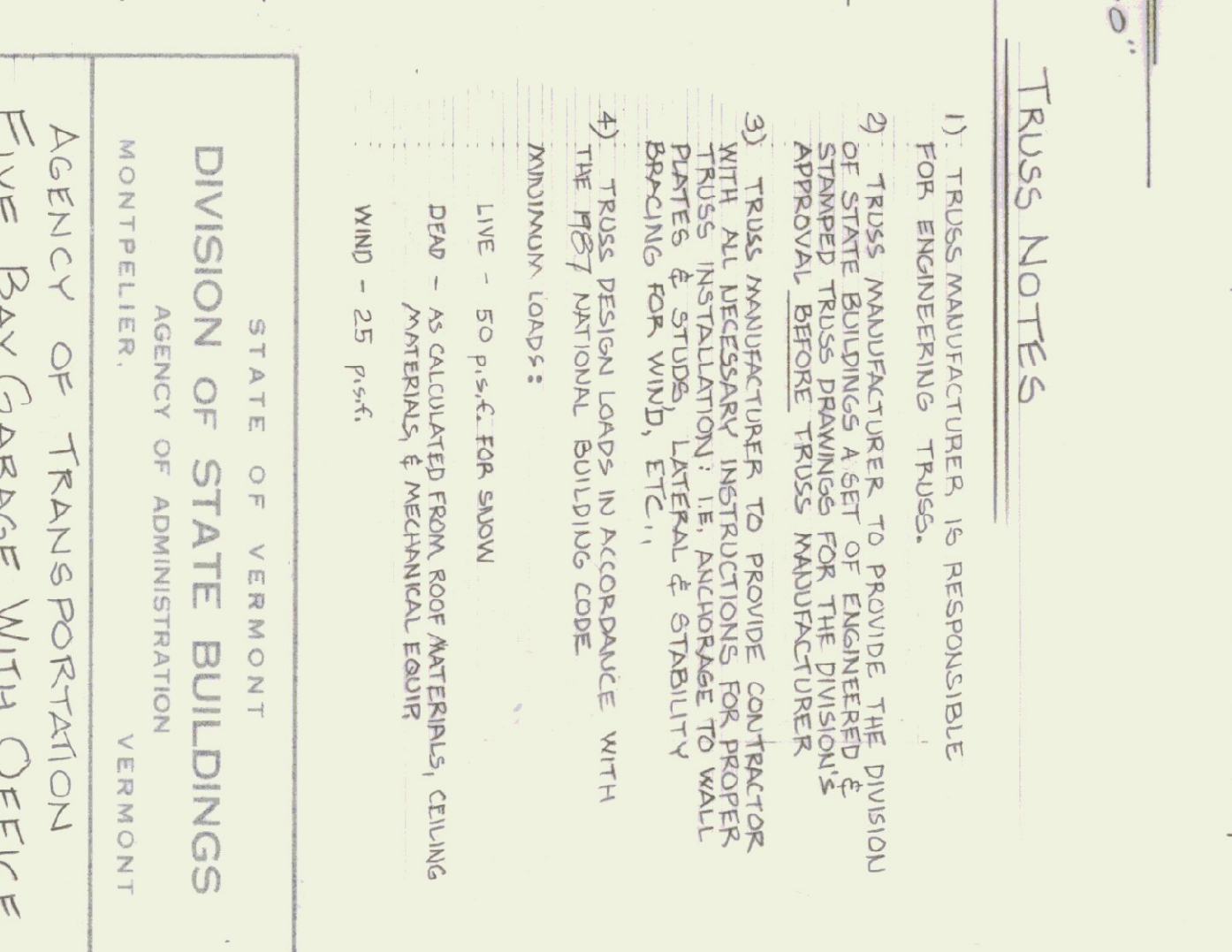
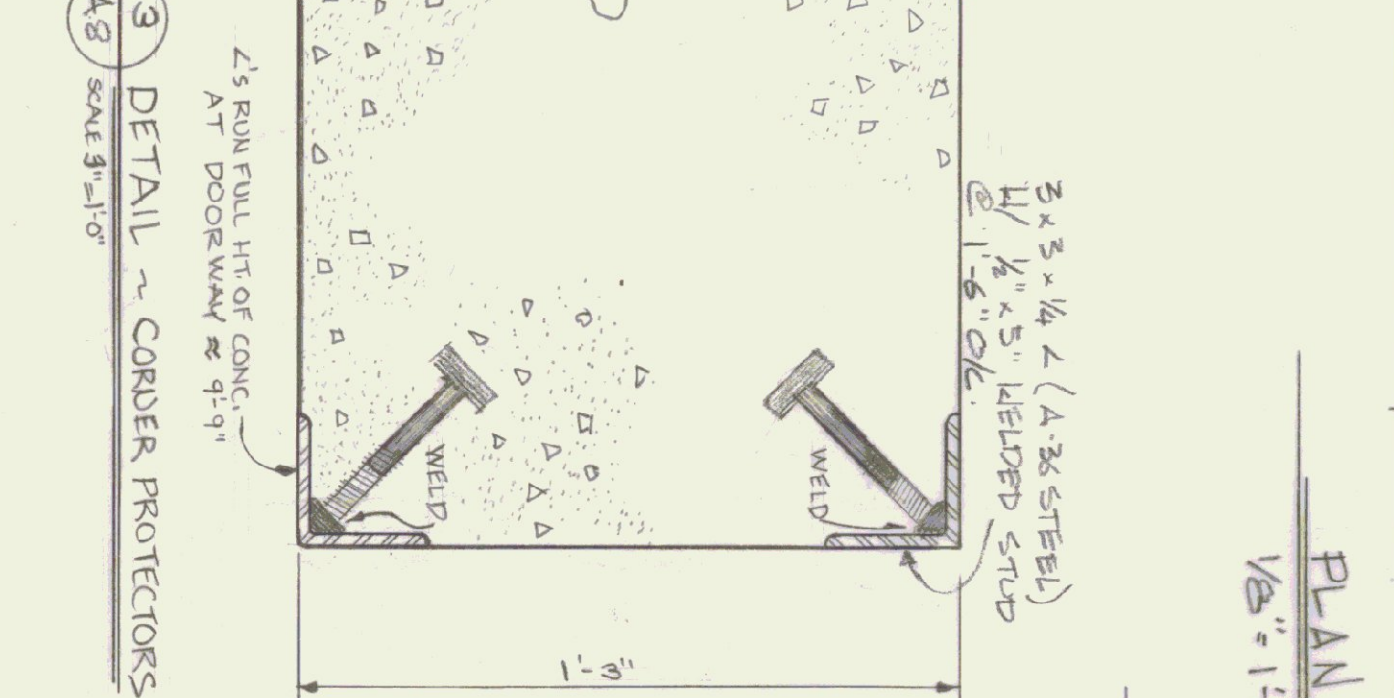
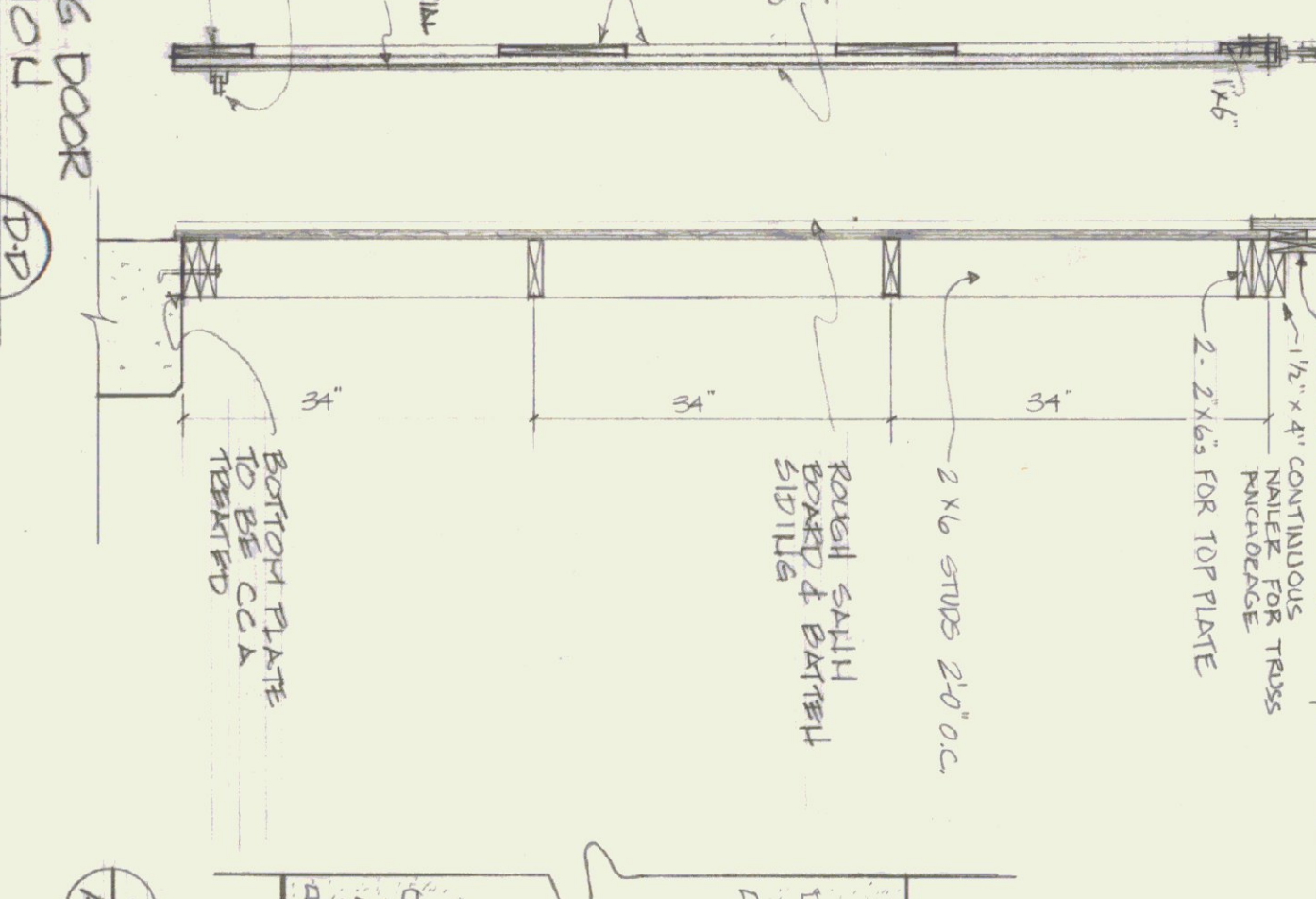
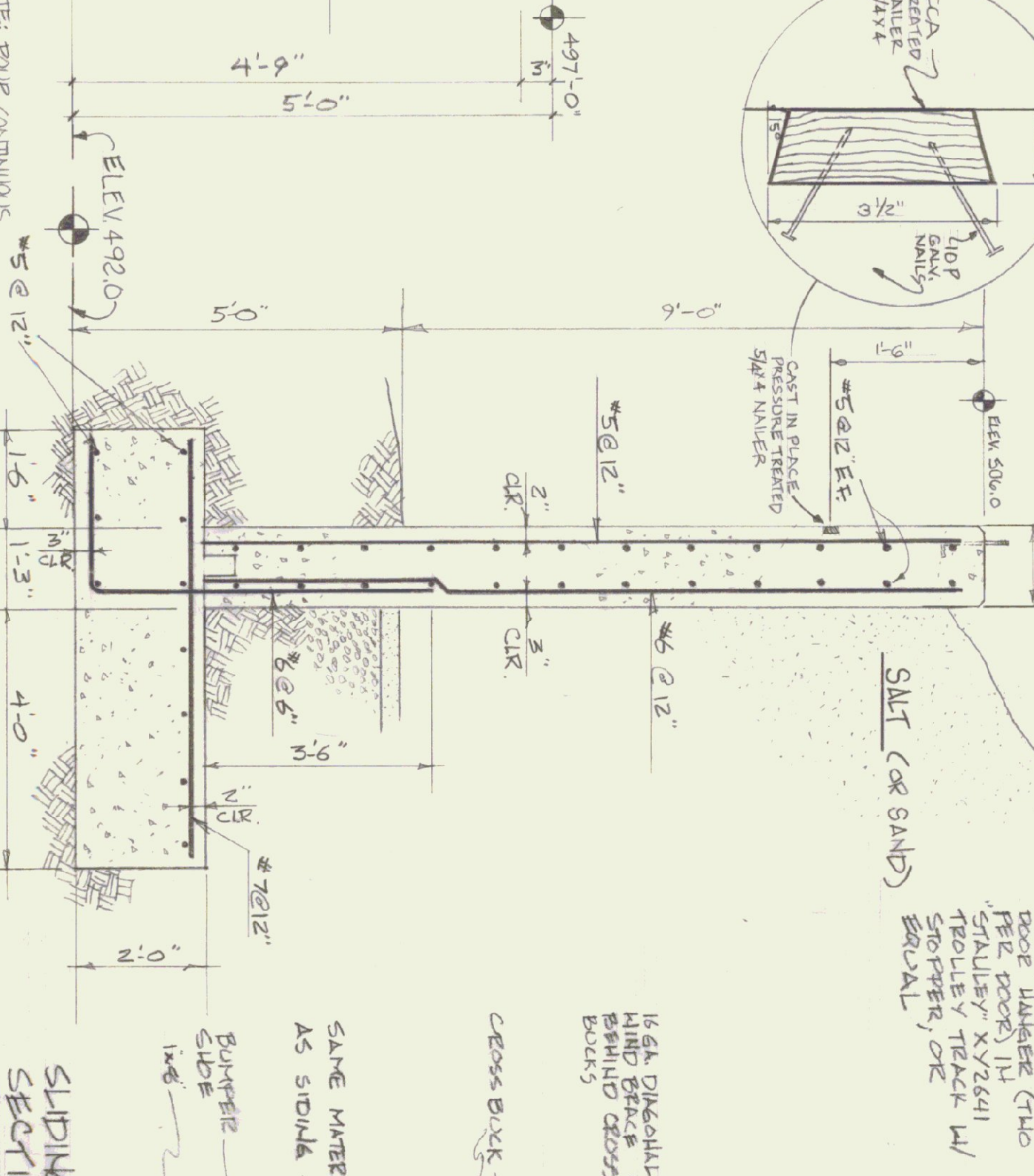
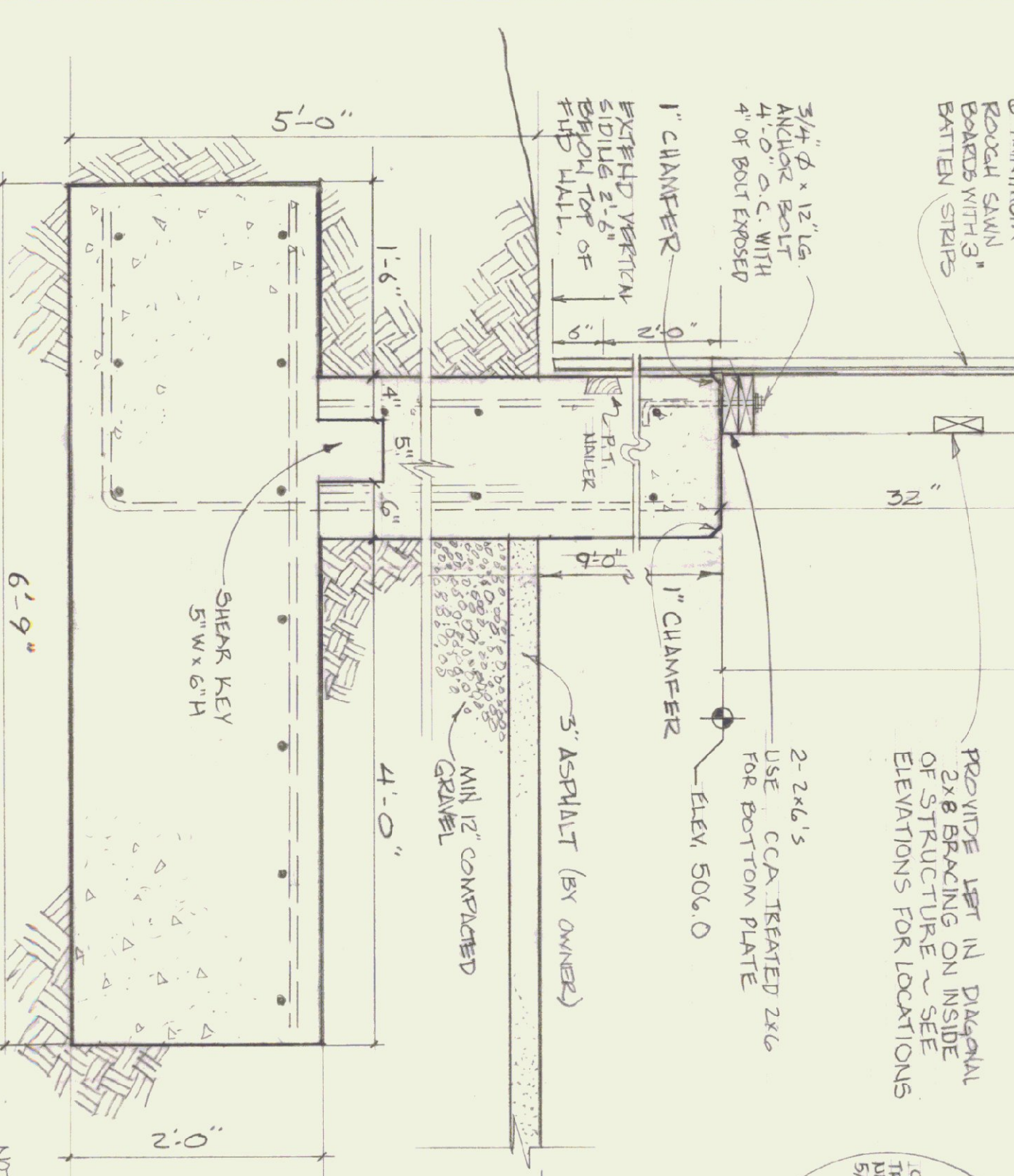
24 GA. CORRUGATED GALV. METAL ROOFING (CYCLO-PANEL OR APPROVED EQUAL)



- CONCRETE NOTES**
- 3500 PSI AT 28 DAYS
  - MAXIMUM SLUMP OF 4"
  - EXPOSED WALLS TO BE DRESS FINISHED
  - 1/2" V-JOINTS IN EXPOSED FACE OF CONSTRUCTION JOINTS
  - 3/4" CHAMFER IN OUTER FACE OF EXPANSION JOINTS
  - 2 LIRON CAST INTO WALL CORNERS AT GARAGE DOOR FOR STRUCTURAL PROTECTION

**TRUSS NOTES**

- 1) TRUSS MANUFACTURER IS RESPONSIBLE FOR ENGINEERING TRUSSES.
- 2) TRUSS MANUFACTURER TO PROVIDE THE DIVISION OF STATE BUILDINGS A SET FOR ENGINEERING & APPROVAL BEFORE TRUSS MANUFACTURER.
- 3) TRUSS MANUFACTURER TO PROVIDE CONTRACTOR WITH ALL NECESSARY INSTRUCTIONS FOR PROPER PLATING, INSTALLATION, TENSION, AND LOADS TO WALL BRACING FOR WIND, ETC.
- 4) TRUSS DESIGN LOADS IN ACCORDANCE WITH MINIMUM LOADS:
  - LIVE - 50 psf ± FOR SAWD
  - DEAD - AS CALCULATED FROM ROOF MATERIALS, CEILING MATERIALS, & MECHANICAL EQUIP
  - WIND - 25 psf ±



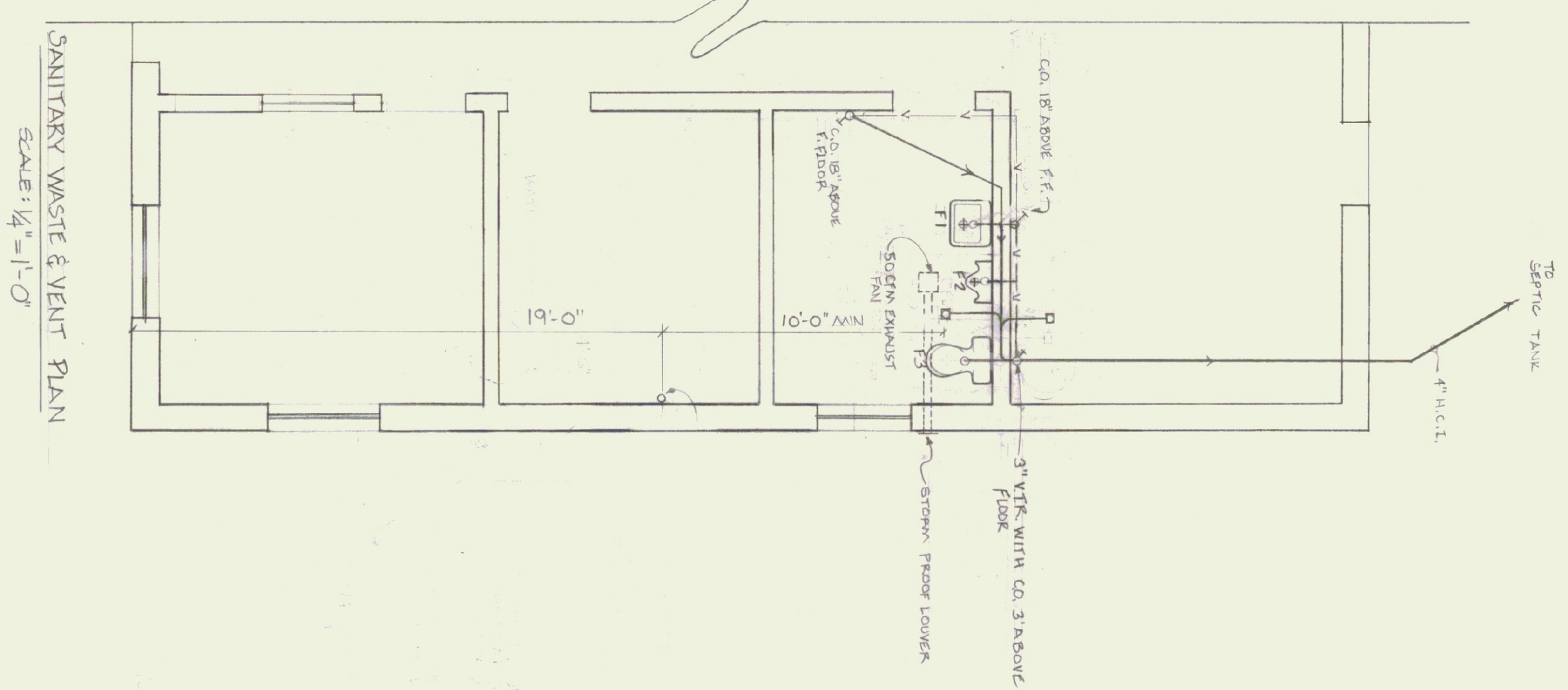
STATE OF VERMONT  
DIVISION OF STATE BUILDINGS  
AGENCY OF ADMINISTRATION  
MONTPELIER, VERMONT

AGENCY OF TRANSPORTATION  
FIVE BAY GARAGE WITH OFFICE  
CAMBRIDGE, VT DISTRICT 8

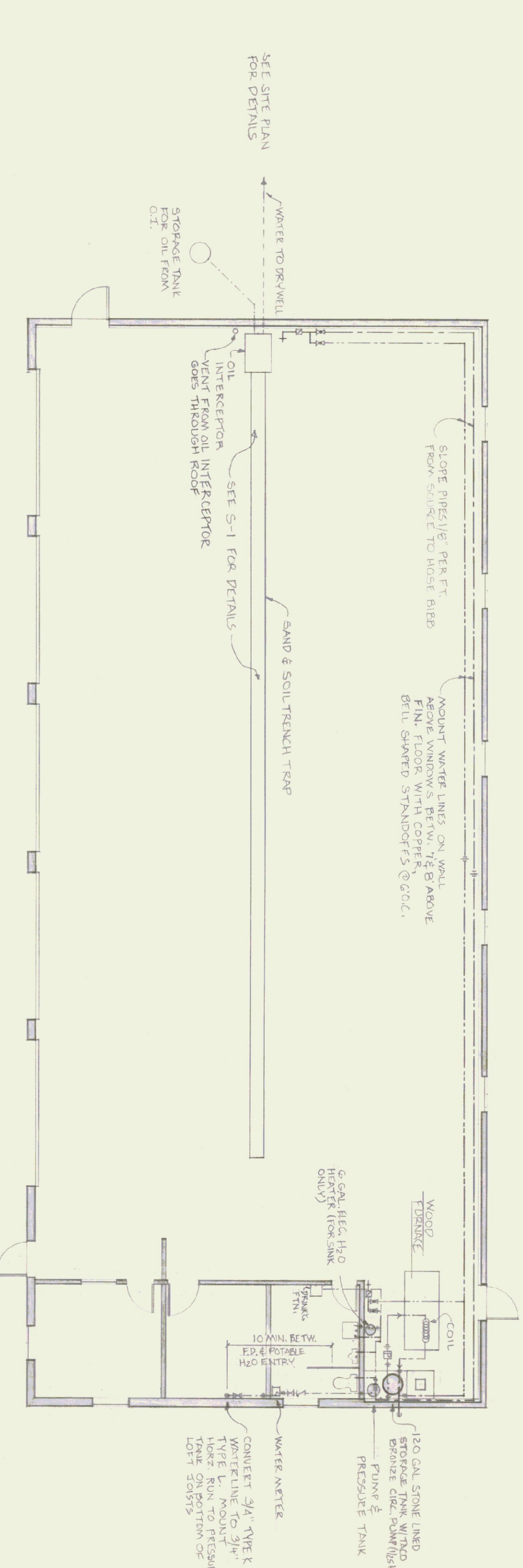
SALT SHED

DATE: 1/17/83	SCALE: AS NOTED	REVISIONS:	DWG. NO. A-8
DRAWN BY: S. REMICK	APPROVED BY: F. RAIT		9 OF 11

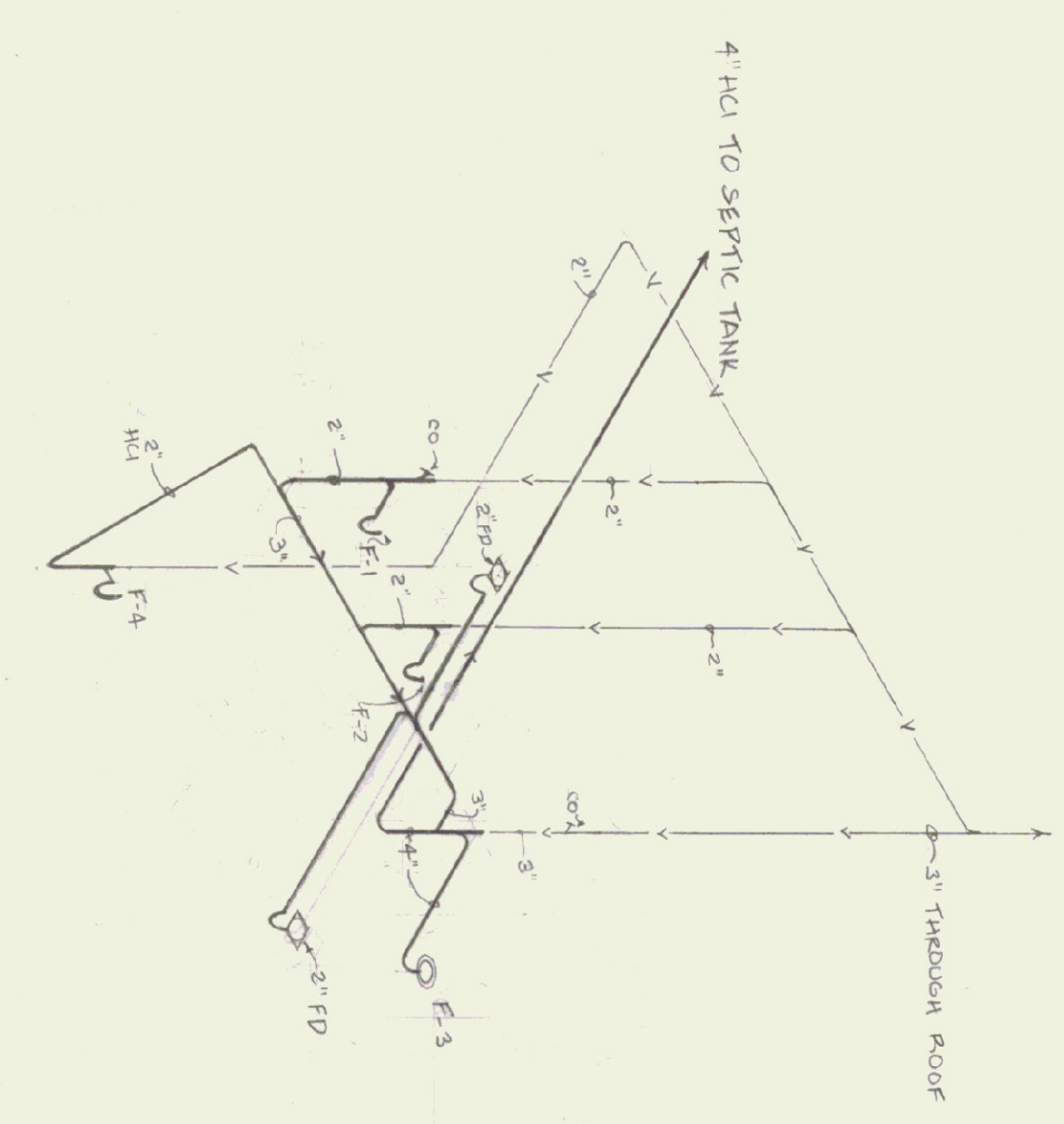
- FIXTURE SCHEDULE**
- F-1 WALL MOUNTED CERAMIC LAVATORY
  - F-2 WALL MOUNTED URINAL WITH VACUUM BREAKER ON FLUSH VALVE
  - F-3 FLOOR MOUNTED CERAMIC TOILET FIXTURE WITH ELONGATED FRONT (16" HIGH)
  - F-4 WALL MOUNTED DRINKING FOUNTAIN WITH ELECTRIC COOLER



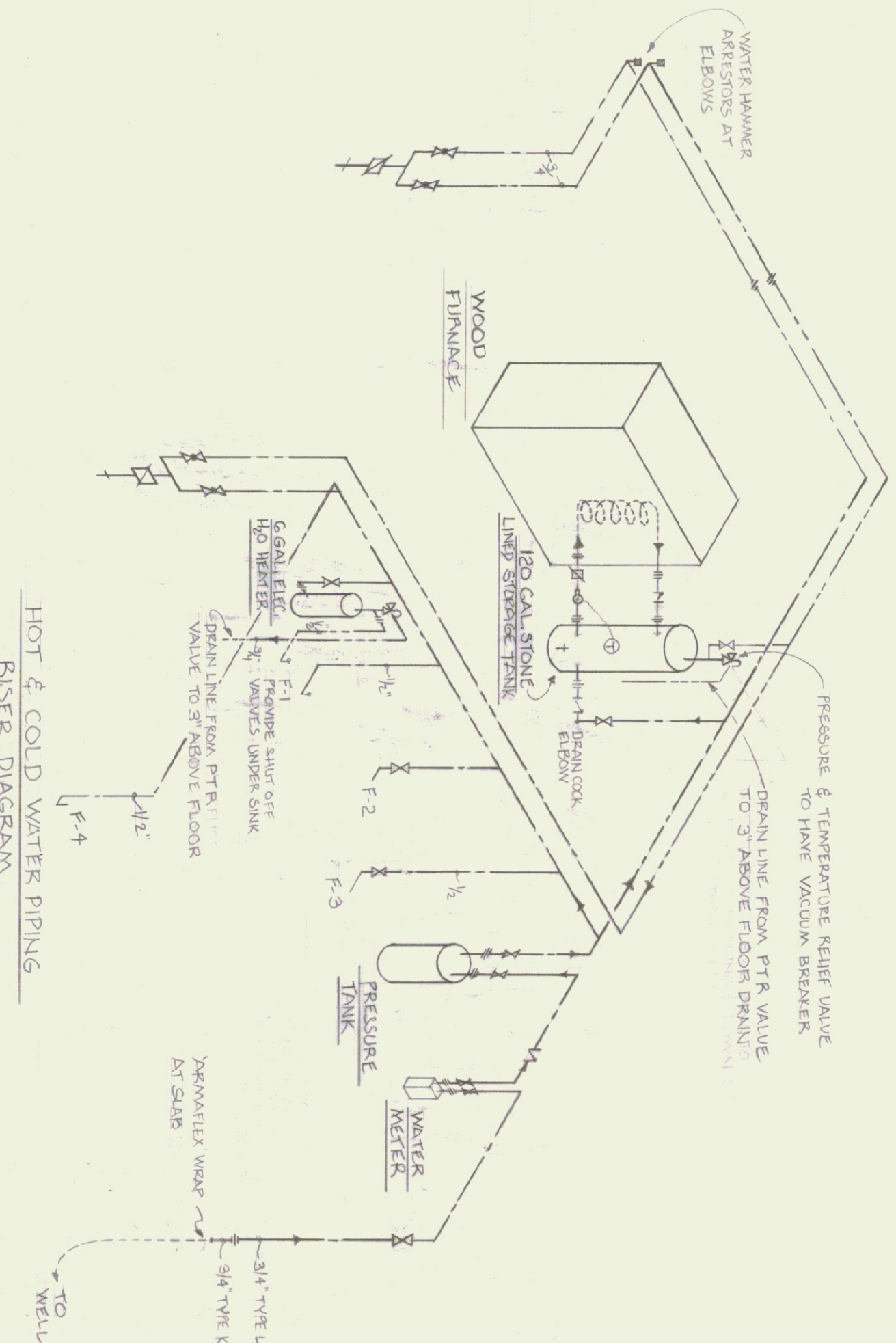
**SANITARY WASTE & VENT PLAN**  
SCALE: 1/4" = 1'-0"



**HOT & COLD WATER PIPING PLAN**  
SCALE: 1/8" = 1'-0"  
NOTE: SEE PIPING RISER DIAGRAM BELOW FOR DEFINING LAYOUT & NUMBER OF VALVES & FITTINGS



**SANITARY WASTE & VENT PIPE RISER DIAGRAM**  
SCALE: 1/2" = 1'-0"  
NOTE: H.C.I. PIPE CONVERTS TO TYPE L COPPER C-B ABOVE FINISHED FLOOR



**HOT & COLD WATER PIPING RISER DIAGRAM**  
NOTE TO SCALE: NOTES: 1) ALL WATER LINES ABOVE GRADE TO BE 3/4" TYPE L COPPER EXCEPT FOR 1/2" LINES TO SINK & TOILET 2) 120 GAL. STONE LINED STORAGE TANK TO BE EQUIPPED WITH A VACUUM BREAKER

**PLUMBING SYMBOLS FOR PIPING, VALVES, & FITTINGS**

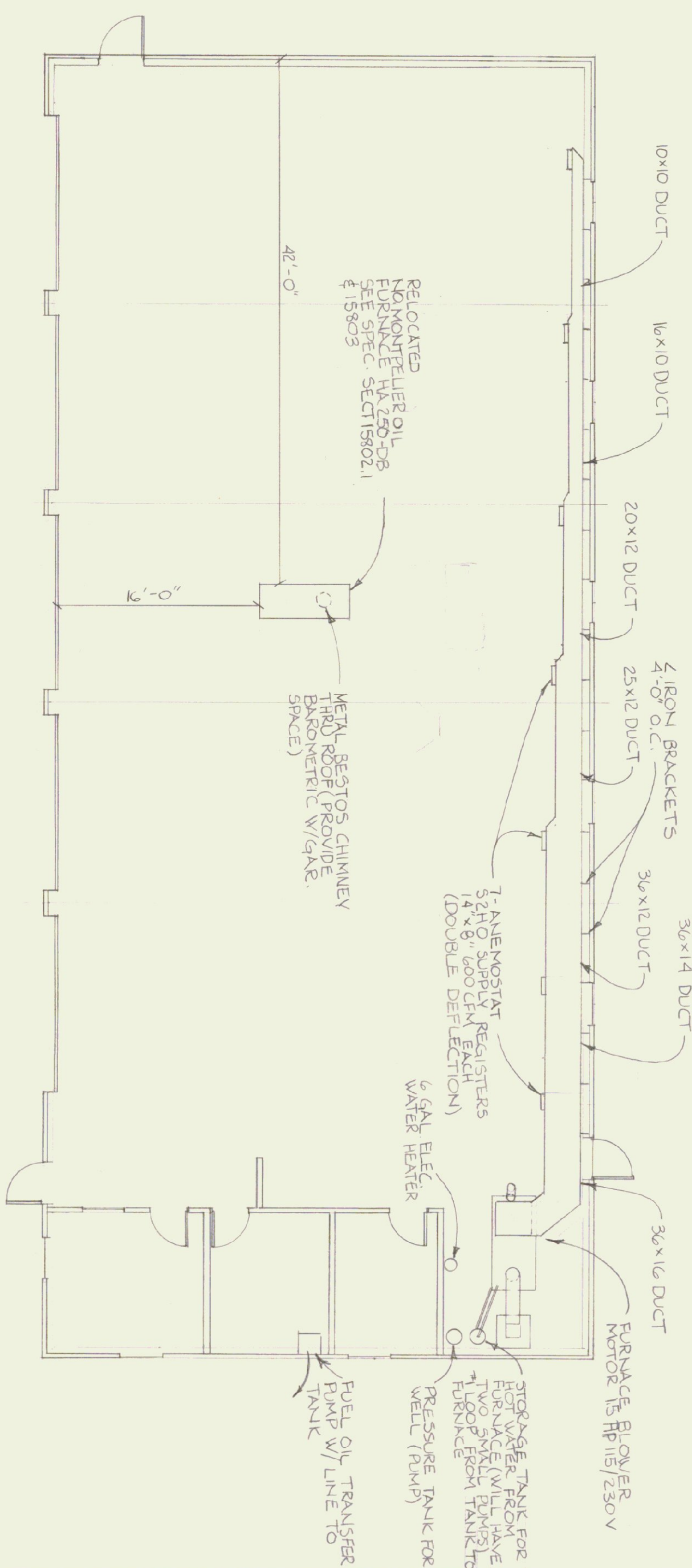
—	COLD WATER	□	FLOOR DRAIN WITH "P" TRAP
—	HOT WATER	○	TOILET FLANGE
—	PTR VALVE WATER	—○—	PUMP
—	WASTE PIPING		
—	VENT PIPING		
—	FLOW DIRECTION		
—	GATE VALVE		
—	CHECK VALVE		
—	BACKFLOW PREVENTER		
—	PRESSURE & TEMP RELIEF VALVE		
—	WATER HAMMER ARRESTOR		
—	FLOOR CLEANOUT		
—	CLEANOUT		
—	UNION		
—	HOSE BIBB		
—	"P" TRAP		

STATE OF VERMONT  
DIVISION OF STATE BUILDINGS  
AGENCY OF ADMINISTRATION  
MONTPELIER, VERMONT

AGENCY OF TRANSPORTATION  
FIVE BAY GARAGE WITH OFFICE  
CAMBRIDGE, VT. DISTRICT 8

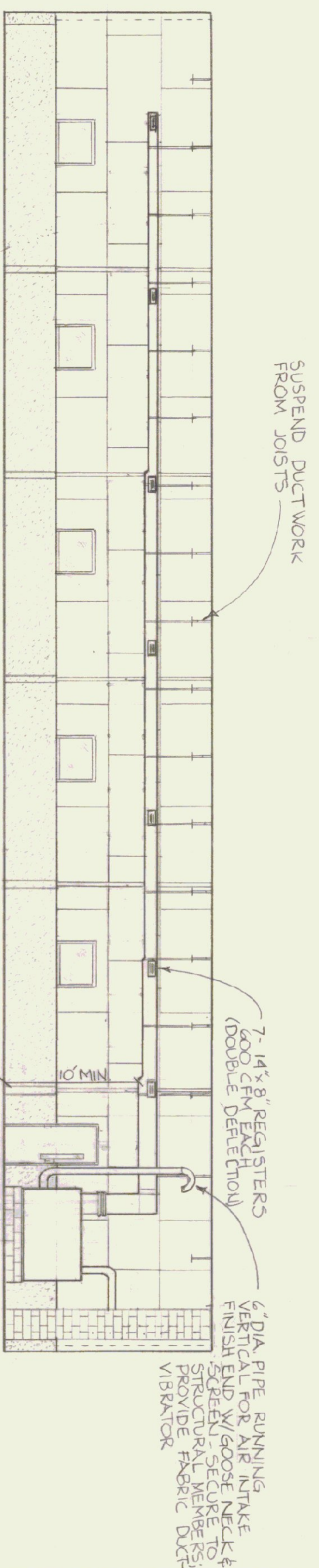
**PLUMBING SYSTEM PLAN**

DATE: 11/7/83	SCALE: AS NOTED	REVISIONS:	DWG. NO. P-1
DRAWN BY: J. Richardson	APPROVED BY: J. Richardson		10 of 11



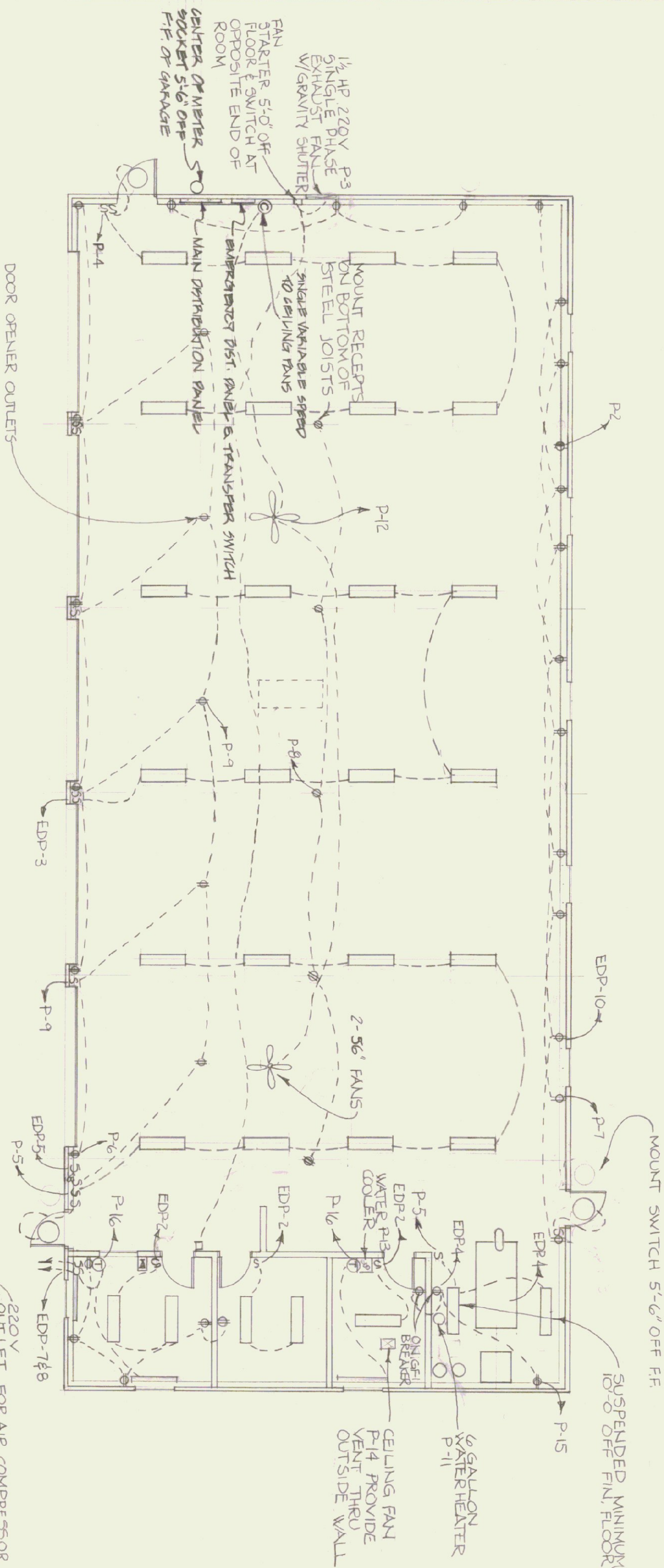
MECHANICAL PLAN

NOTE: ALL JOINTS IN FUEL OIL LINE TO BE FLARED. ALL SOLDERED JOINTS TO BE SWEATED WITH SILVER SOLDER



FURNACE ELEVATION

SCALE: 1/8" = 1'-0"



ELECTRICAL PLAN

SCALE: 1/8" = 1'-0"

POWER PANEL SCHEDULE			
PANEL NO.	CIRCUIT BREAKER TYPE	NO. B. WESTINGHOUSE	REMARKS
P-1	100	2	EMERGENCY DIST. PANEL
P-2	50	2	WELDING RECEPTACLE
P-3	20	2	BLDG. EXHAUST FAN
P-4	20	1	SHOP LIGHTING
P-5	20	1	"
P-6	20	1	SHOP RECEPTACLES (FEET)
P-7	20	1	SHOP RECEPT. (BREAK)
P-8	20	1	MID BAY CEILING RECEPT.
P-9	20	1	DOOR OPENER RECEPTS
P-10	20	1	LOFT LIGHTING
P-11	20	1	6 GAL. H.T. HD. HEATER
P-12	20	1	CEILING FANS
P-13	20	1	WATER COOLER, BTH ROOM
P-14	20	1	FAN / GFI
P-15	20	1	FURNACE AREA RECEPTS
P-16	20	1	HEATERS IN BATH OFFICE
P-17	20	1	SPARE

LOFT

GENERAL NOTES

□ SMITHGRAFT "TECH" 30-TEC-2-405 (MOUNT ON BOTTOM OF JOISTS)

⊕ THERMOSTAT - CONNECT TO CIRCUIT

⊙ 50 AMP WELDER OUTLET

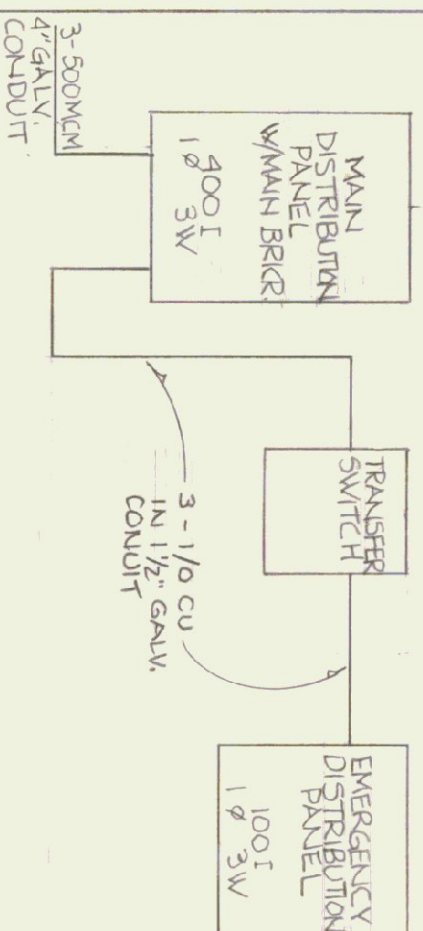
⊠ ALLOW FOR TELEPHONE SLEEVE THRU EXTERIOR WALL COORDINATE WITH LOCAL TELEPHONE CO.

ALL WALL OUTLETS & SWITCHES OF ALL LOCATIONS SHALL BE AT LEAST 46" OFF FLOOR (AROUND BALLER KEEP OUTLETS 4'-6" MIN. ABOVE FLOOR) ALL FLUSH MOUNTED W/ CONCEALED WIRING

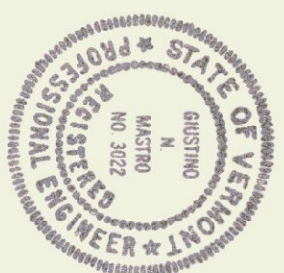
5# BURNER SAFETY SWITCH-MOUNT 4'-0" ABOVE FIN. FL.

ALL EXPOSED WIRING SHALL BE INSTALLED IN CONDUIT GREENFIELD AT ROTATING MACHINERY

EMERGENCY DISTRIBUTION PANEL SCHEDULE			
PANEL NO.	CIRCUIT BREAKER TYPE	NO. WESTINGHOUSE	REMARKS
1	30	2	AIR COMPRESSOR
2	20	1	OFF. BATH (GAS/REFRIG)
3	20	1	SHOP LIGHTING (MID-BAY)
4	20	2	WOOD FURNACE FAN
5	20	1	OIL BURNER
6	20	2	WELL PUMP
7	20	1	FUEL PUMP - GAS
8	20	1	FUEL PUMP - DIESEL
9	20	1	FUEL OIL TRANSFER PUMP
10	20	1	1 ROW REAR SHOP RECEPT.
11	20	1	SPARES



ELECTRICAL FEEDER DIAGRAM



STATE OF VERMONT  
 DIVISION OF STATE BUILDINGS  
 AGENCY OF ADMINISTRATION  
 MONTPELIER, VERMONT

AGENCY OF TRANSPORTATION  
 FIVE BAY GARAGE WITH OFFICE  
 CAMBRIDGE, VT - DISTRICT 8

MECHANICAL & ELECTRICAL PLANS

DATE	SCALE	REVISIONS	DRAWING NO.
1/7/83	AS SHOWN		ME-1
DRAWN BY:	APPROVED BY:		11 OF 11
R. RASETTI			