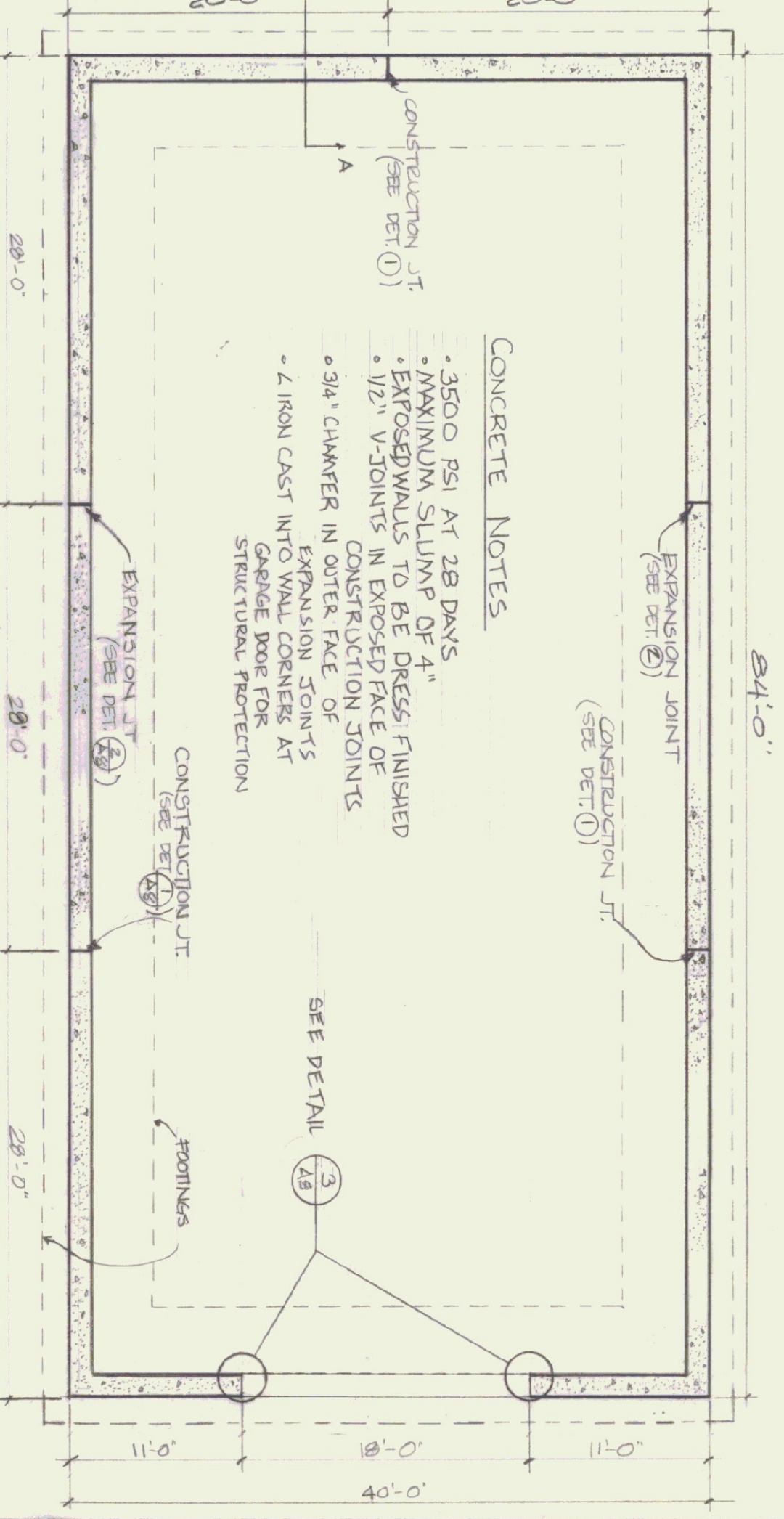
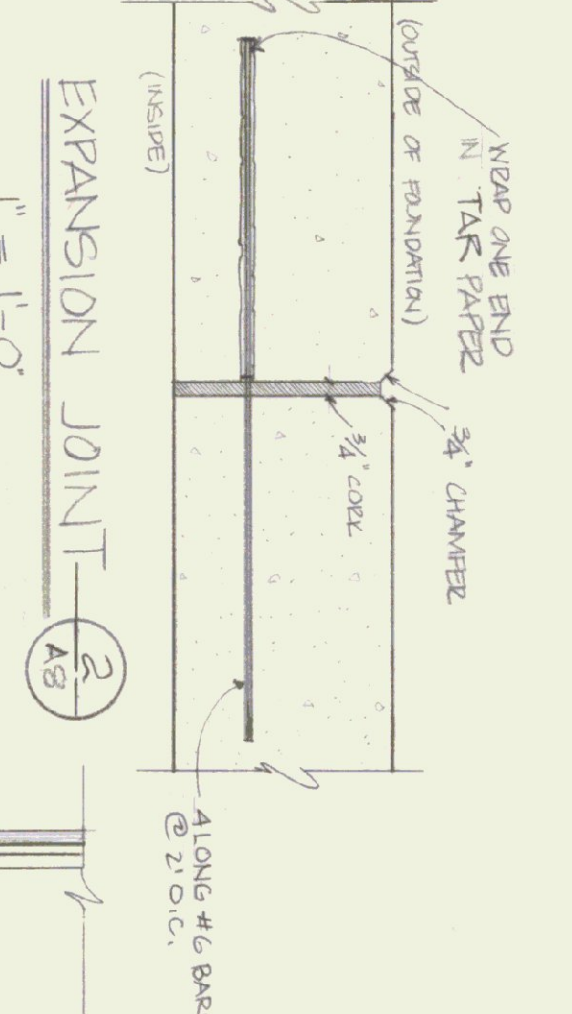
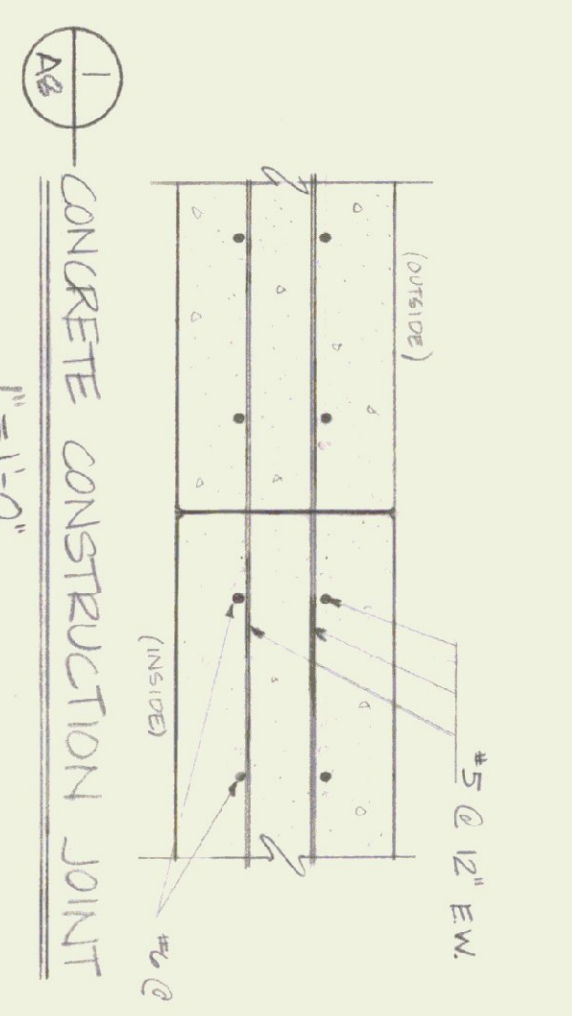
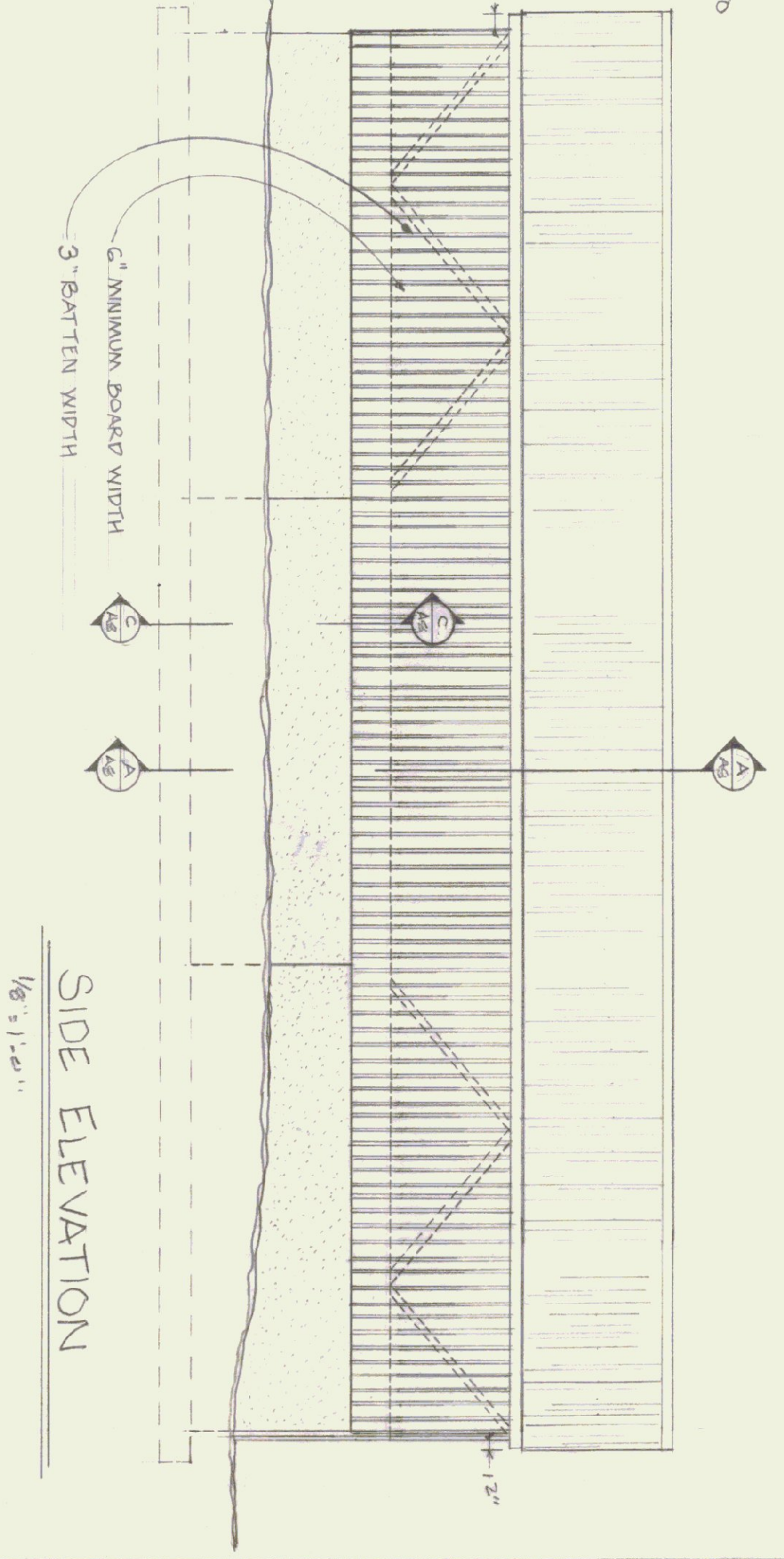
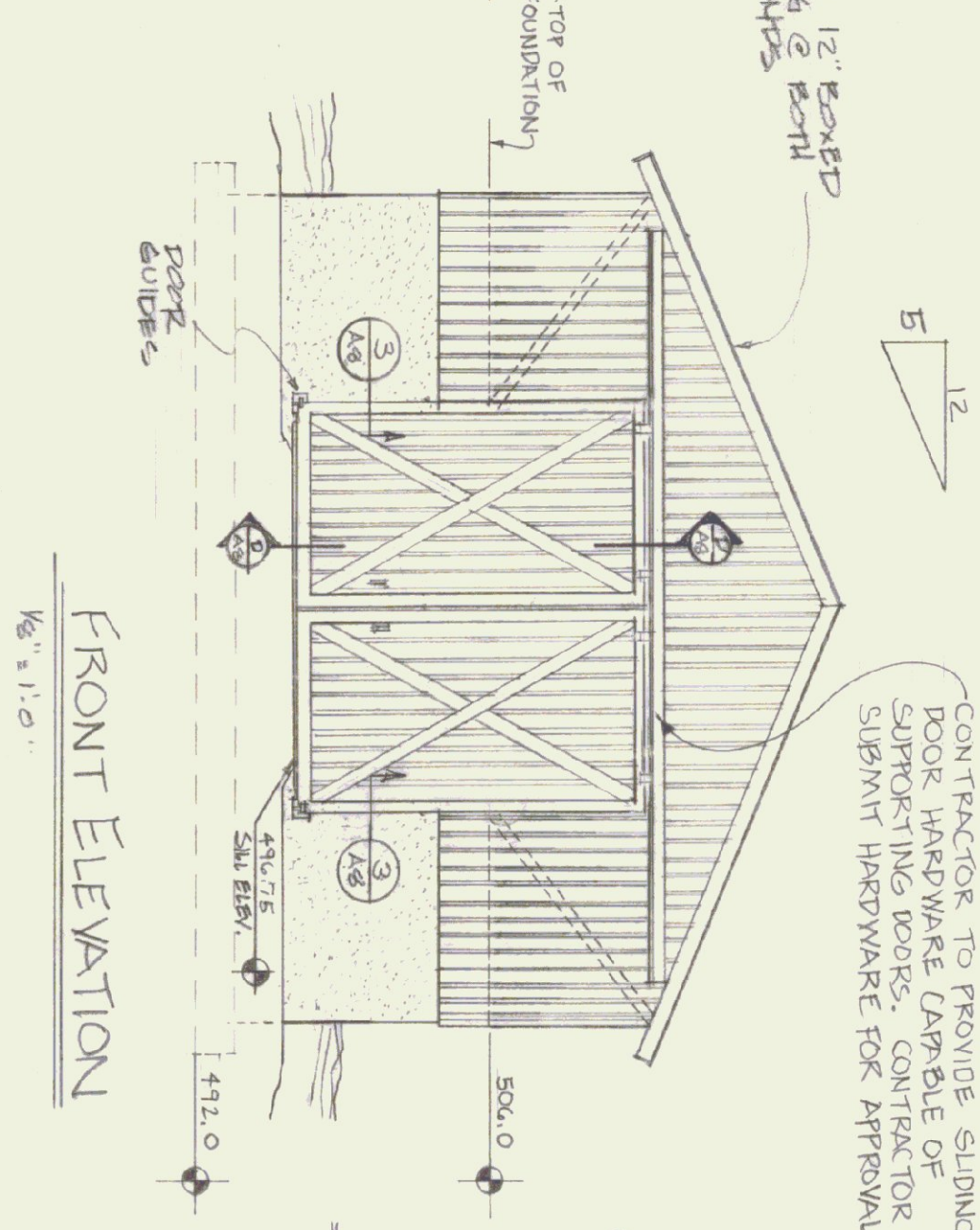
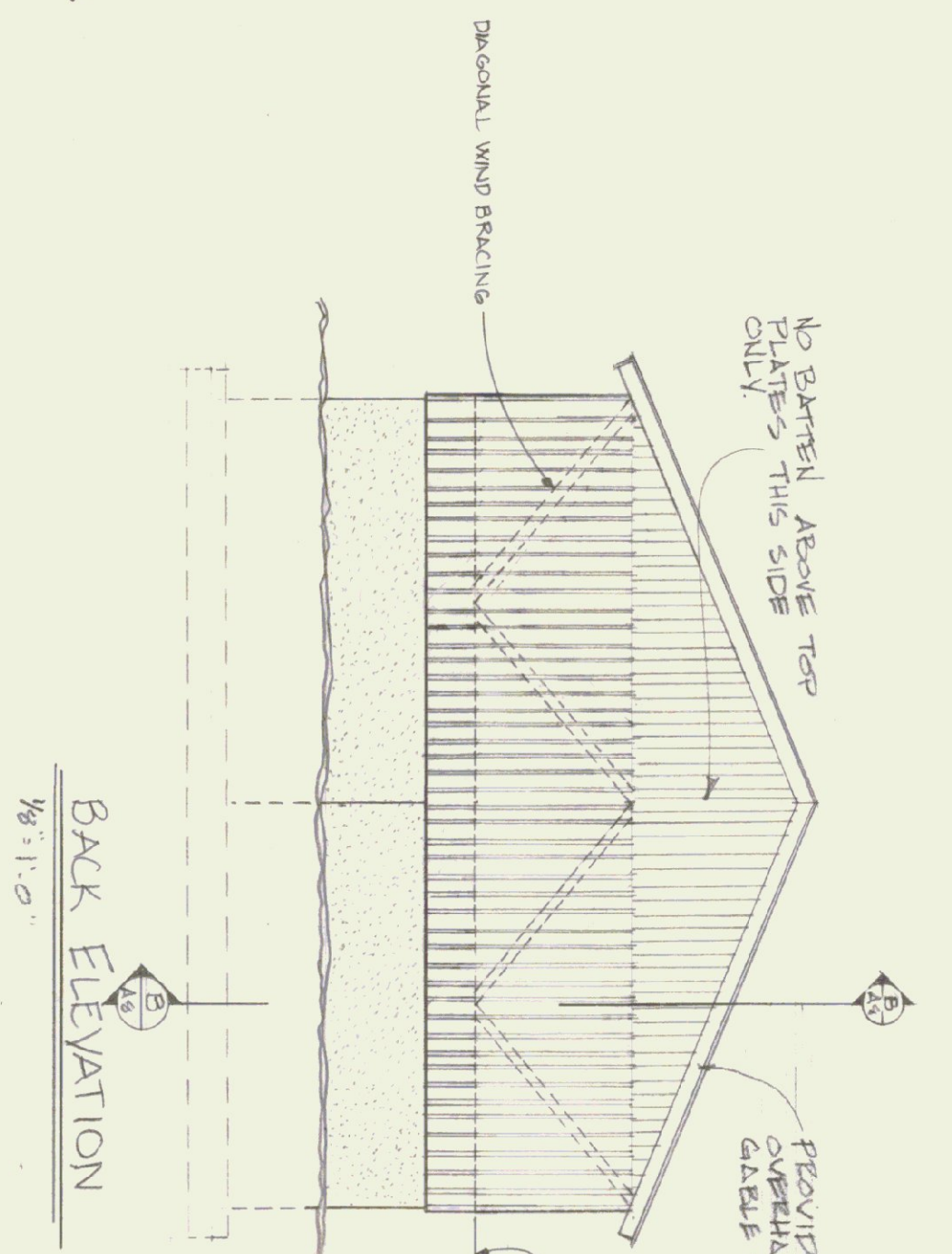
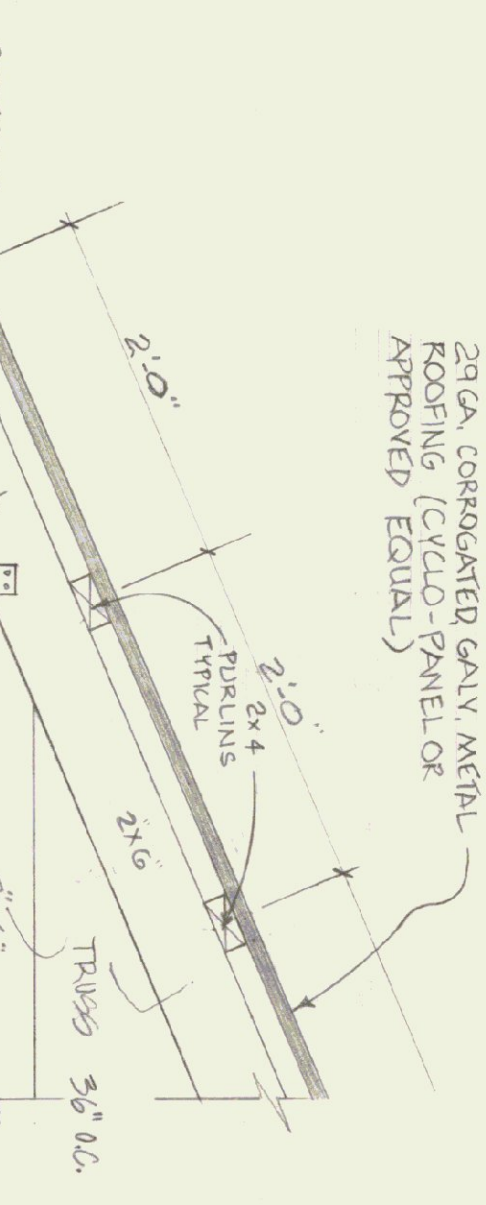


LUMBER NOTES

- FRAMING MEMBERS TO BE KILN DRIED
- CONSTRUCTION GRADE LUMBER
- BOARD & BATTEN SING TO BE NATIVE
- ROUGH SAWN WHITE PINE
- BOARD WIDTH 6" MINIMUM
- BATTEN WIDTH 3"
- ALL PLATES & NAILERS IN CONTACT WITH CONCRETE TO BE CCA TREATED

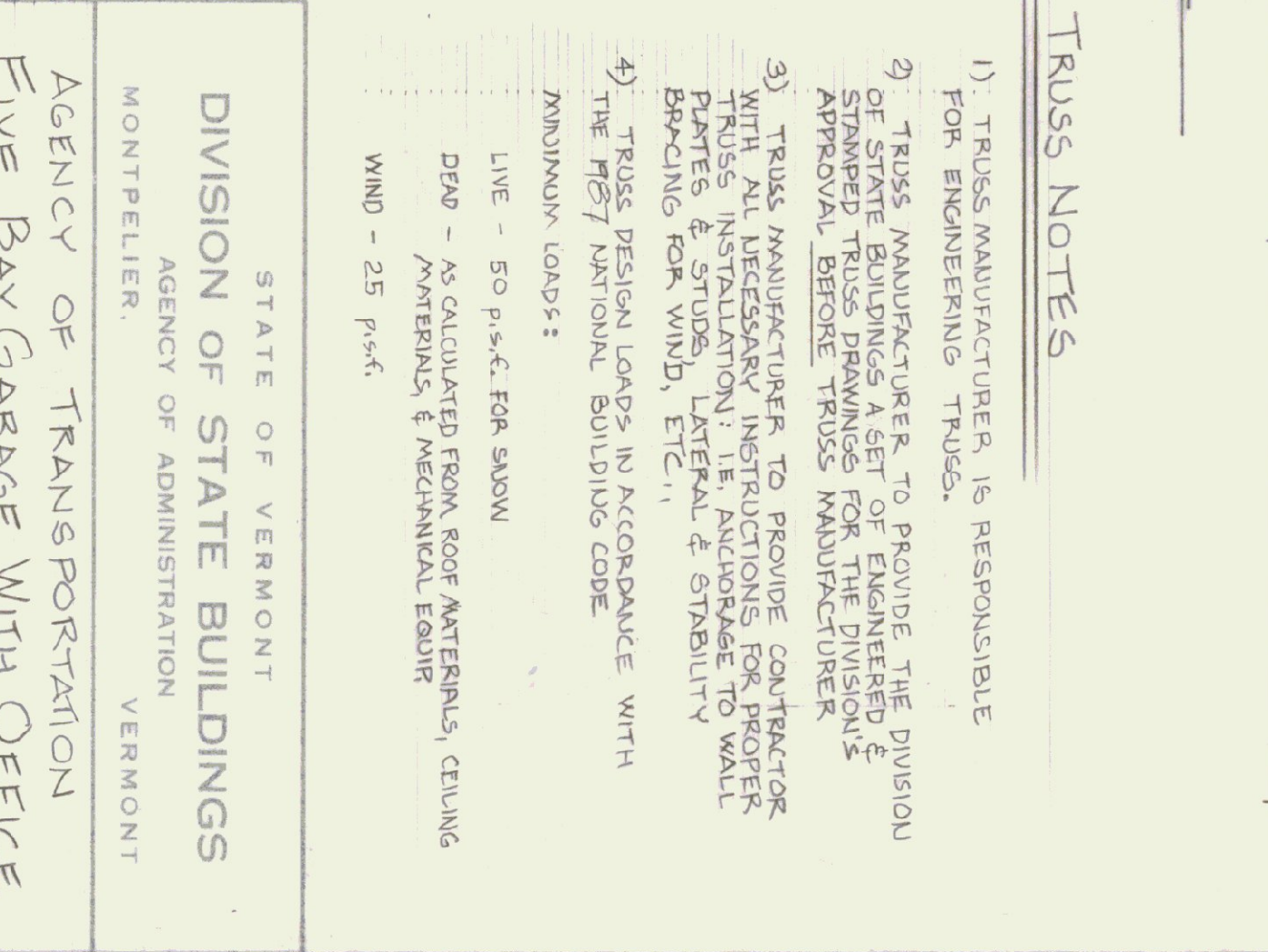
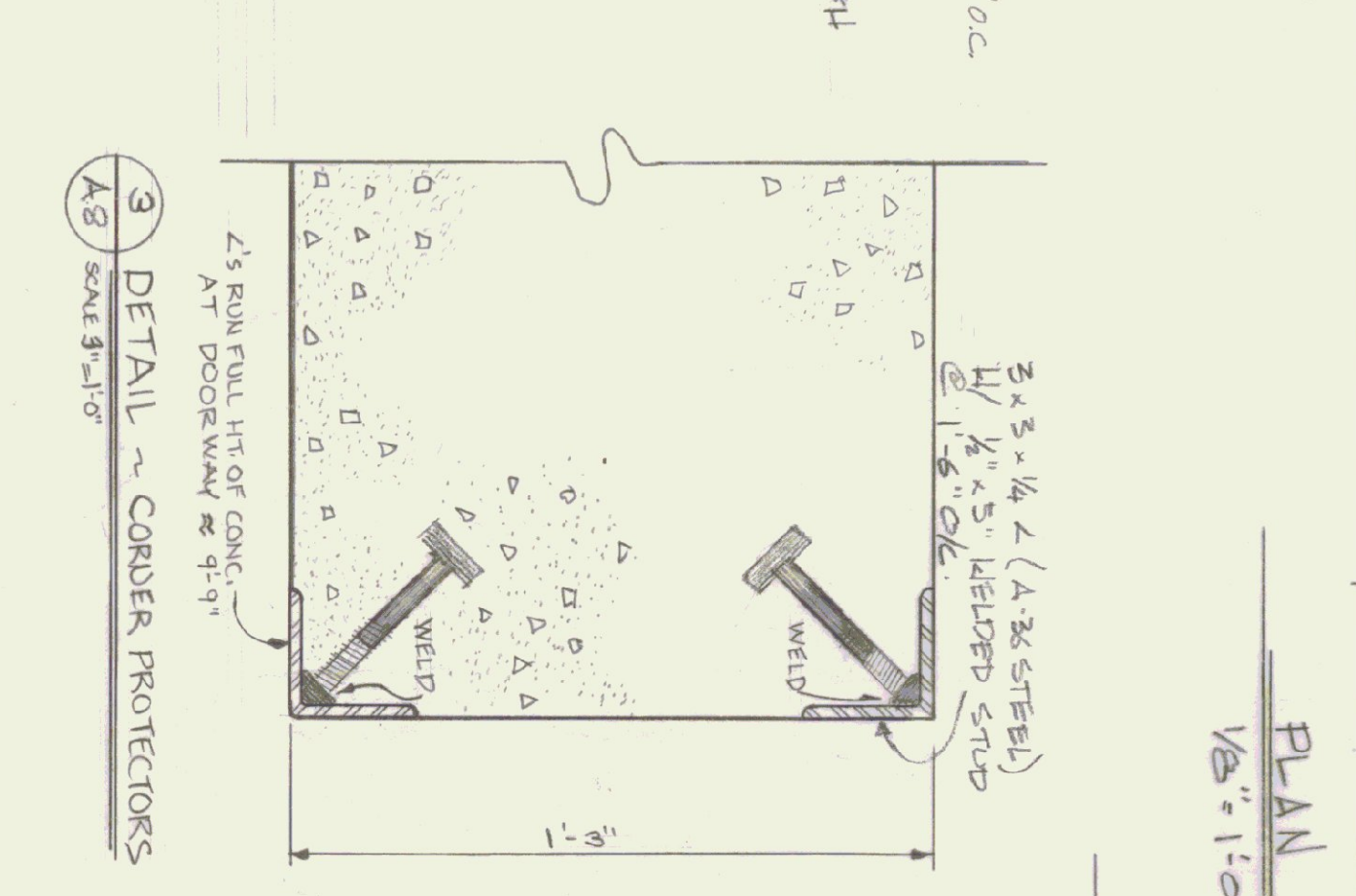
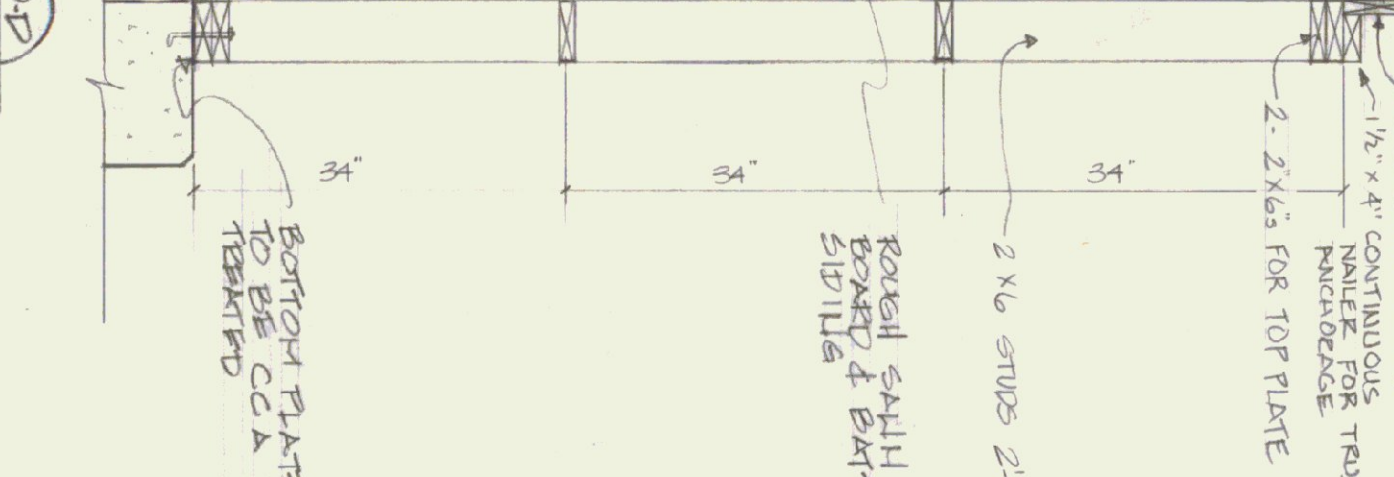
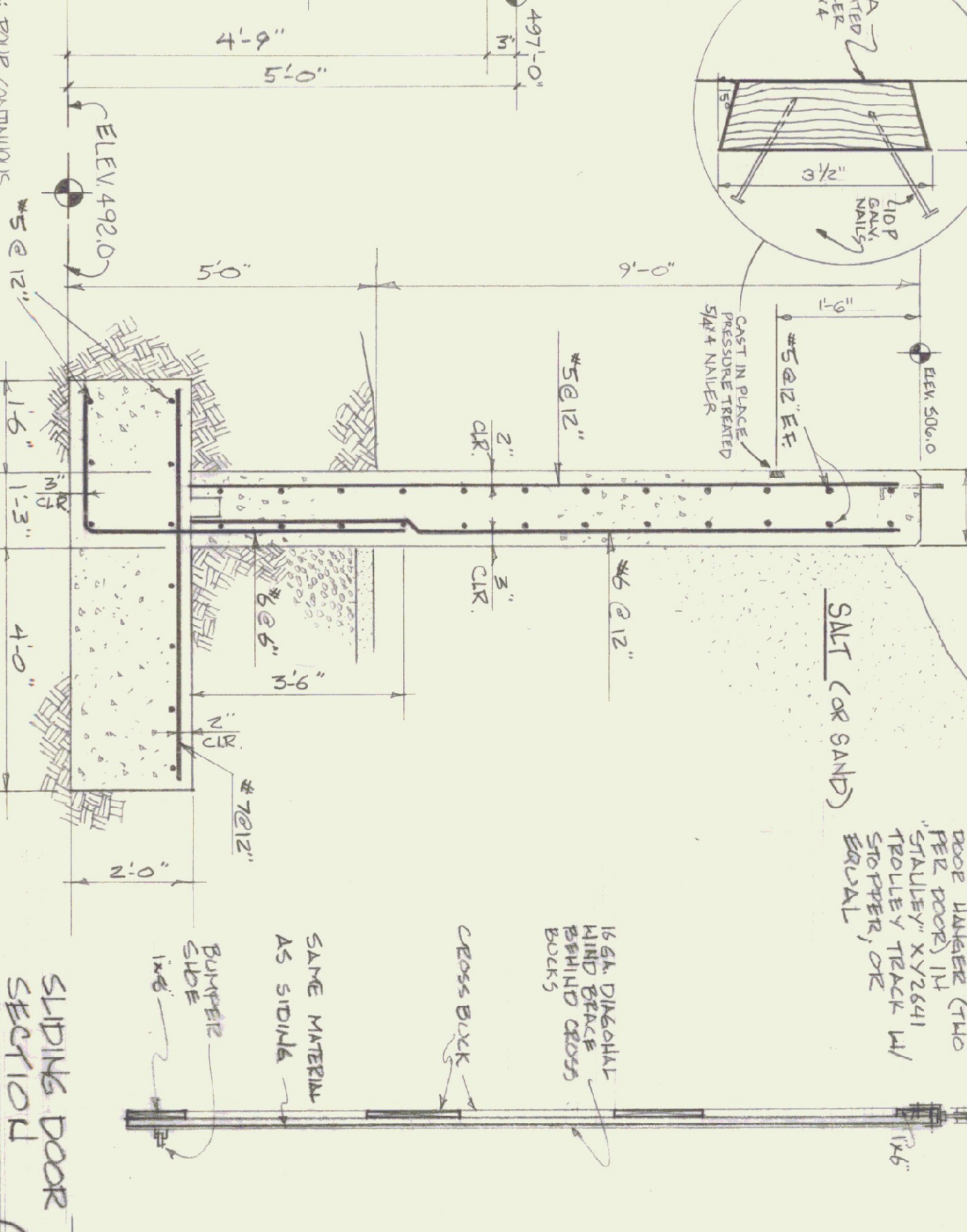
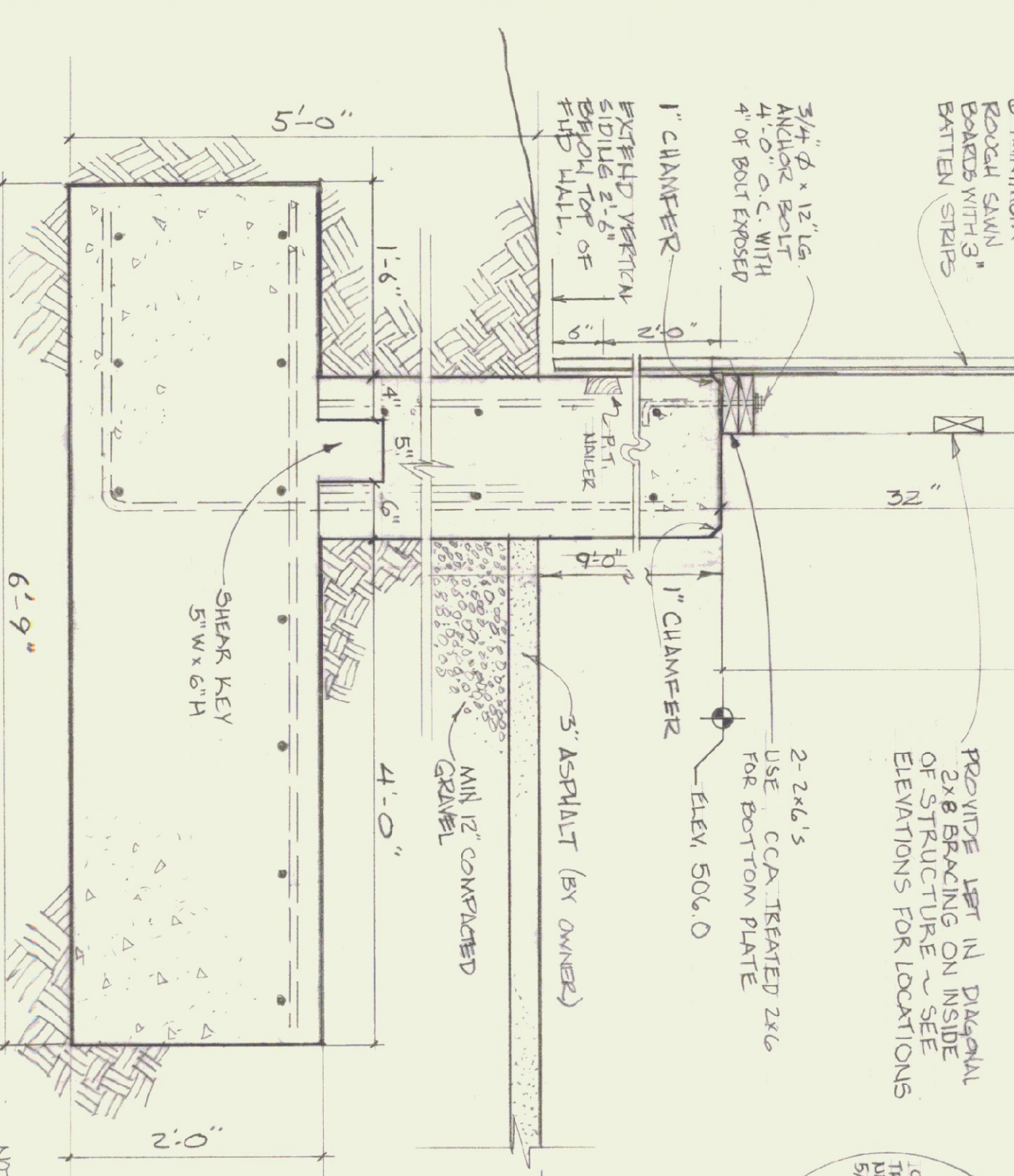
24 GA. CORRUGATED GALV. METAL ROOFING (CYCLO-PANEL OR APPROVED EQUAL)



- CONCRETE NOTES**
- 3500 PSI AT 28 DAYS
 - MAXIMUM SLUMP OF 4"
 - EXPOSED WALLS TO BE DRESS FINISHED
 - 1/2" V-JOINTS IN EXPOSED FACE OF CONSTRUCTION JOINTS
 - 3/4" CHAMFER IN OUTER FACE OF EXPANSION JOINTS
 - 2 LIRON CAST INTO WALL CORNERS AT GARAGE DOOR FOR STRUCTURAL PROTECTION

TRUSS NOTES

- 1) TRUSS MANUFACTURER IS RESPONSIBLE FOR ENGINEERING TRUSSES.
- 2) TRUSS MANUFACTURER TO PROVIDE THE DIVISION OF STATE BUILDINGS A SET FOR ENGINEERING & APPROVAL BEFORE TRUSS MANUFACTURER.
- 3) TRUSS MANUFACTURER TO PROVIDE CONTRACTOR WITH ALL NECESSARY INSTRUCTIONS FOR PROPER PLATING, INSTALLATION, TERMINAL & STABILITY BRACING FOR WIND, ETC.
- 4) TRUSS DESIGN LOADS IN ACCORDANCE WITH MINIMUM LOADS:
 - LIVE - 50 psf ± FOR SAWD
 - DEAD - AS CALCULATED FROM ROOF MATERIALS, CEILING MATERIALS, & MECHANICAL EQUIP
 - WIND - 25 psf ±



STATE OF VERMONT
DIVISION OF STATE BUILDINGS
 AGENCY OF ADMINISTRATION
 MONTPELIER, VERMONT

AGENCY OF TRANSPORTATION
 FIVE BAY GARAGE WITH OFFICE
 CAMBRIDGE, VT DISTRICT 8

SALT SHED

DATE: 1/17/83
 DRAWN BY: S. REMICK
 APPROVED BY: F. RAIT

SCALE: AS NOTED
 REVISIONS:

SWG. NO. A-8
 9 OF 11