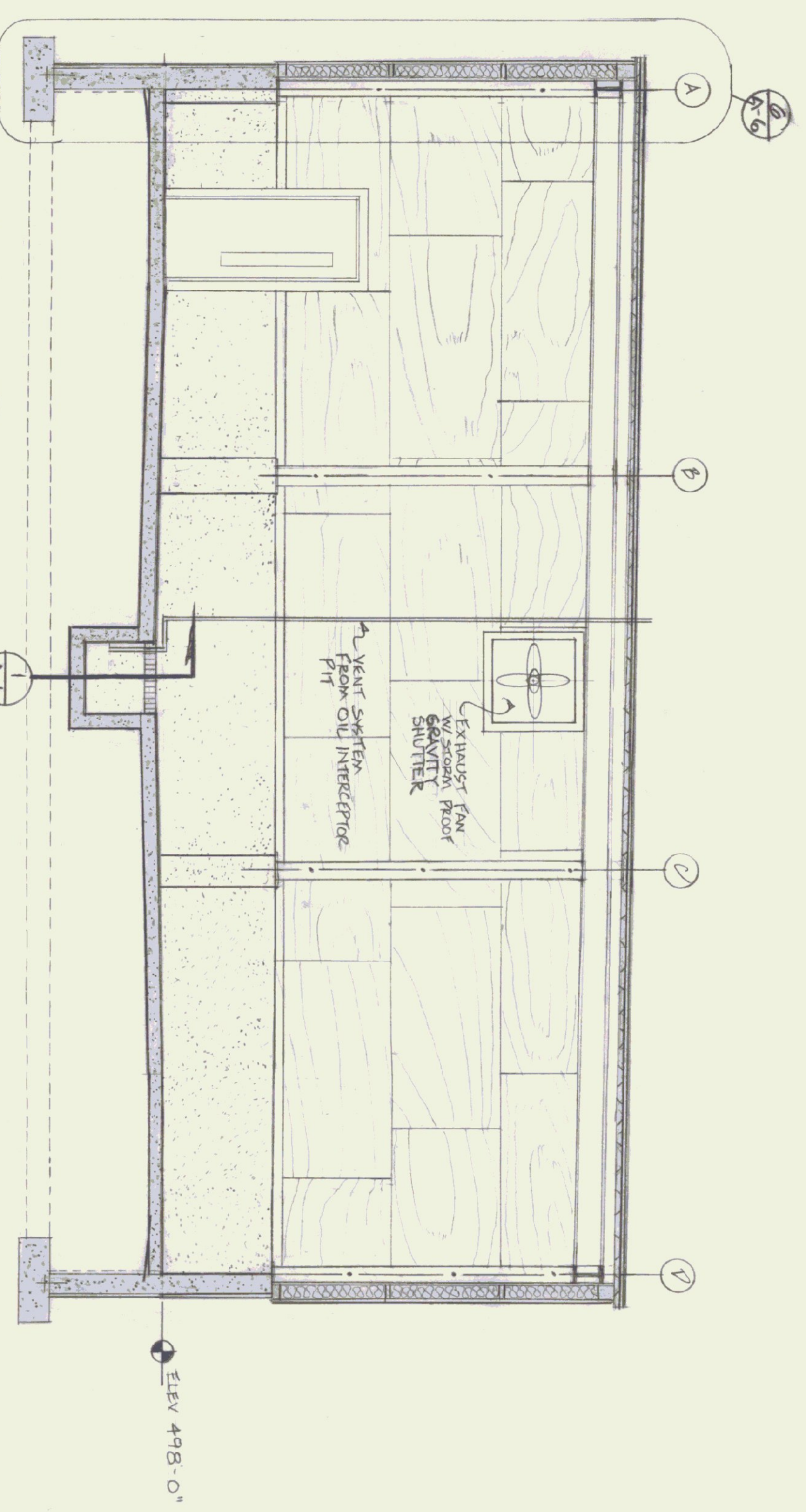


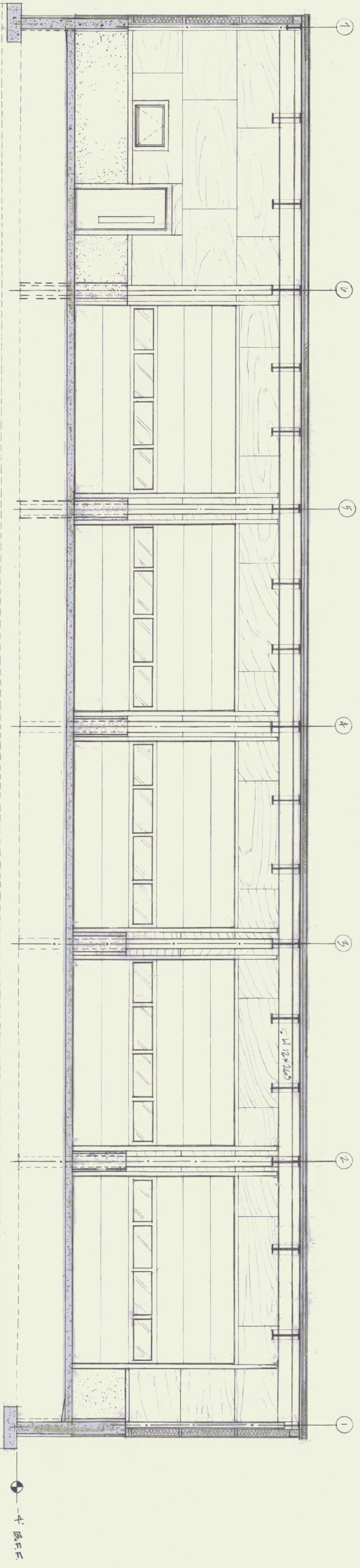
CROSS SECTION  
SCALE: 1/4" = 1'-0"



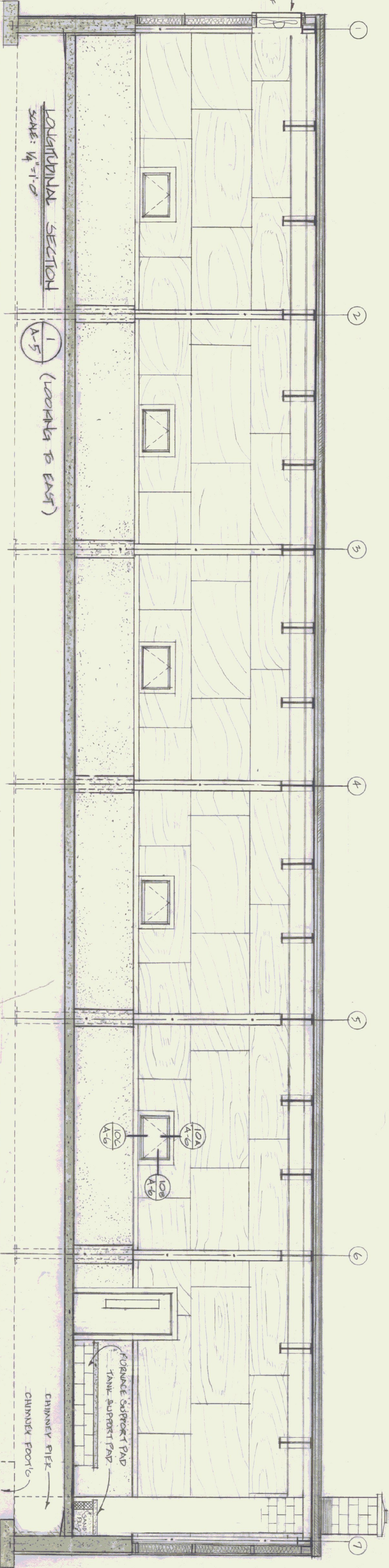
ROOF PLAN  
SCALE: 1/8" = 1'-0"



LONGITUDINAL SECTION 2  
SCALE 1/4" = 1'-0" (LOOKING TO WEST)



LONGITUDINAL SECTION 1  
SCALE: 1/4" = 1'-0" (LOOKING TO EAST)



STATE OF VERMONT		DATE: 11/6/83		DWS. NO. A-5	
DIVISION OF STATE BUILDINGS		SCALE: AS NOTED		REVISIONS: 4/8/83 AVP	
AGENCY OF ADMINISTRATION		DRAWN BY: RJB		APPROVED BY:	
MONTPELIER, VERMONT		INTERIOR ELEVATIONS & SECTIONS			
AGENCY OF TRANSPORTATION					
FIVE BAY GARAGE WITH OFFICE					
CAMBRIDGE, VT DISTRICT 8					
6 OF 11					