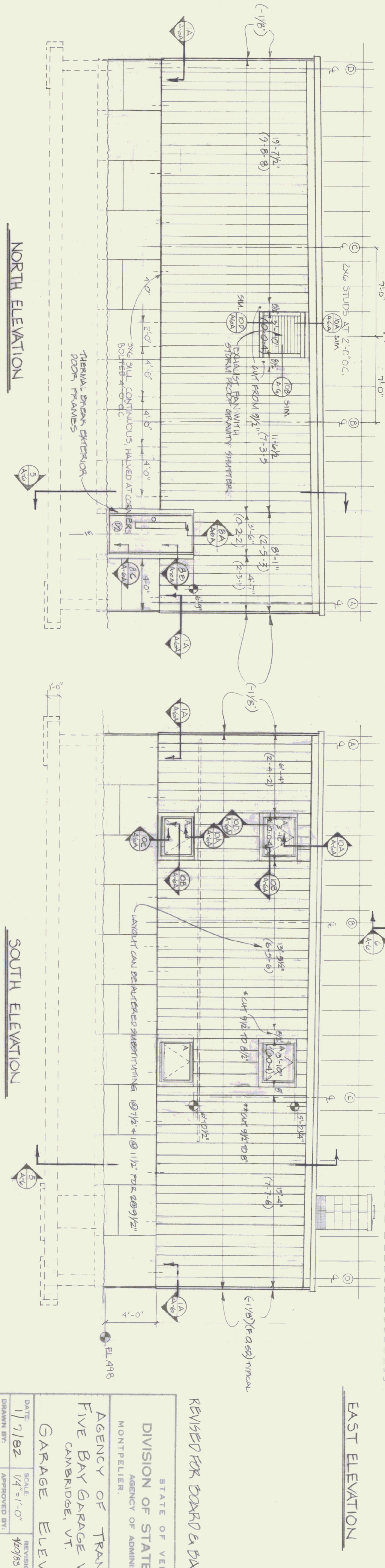
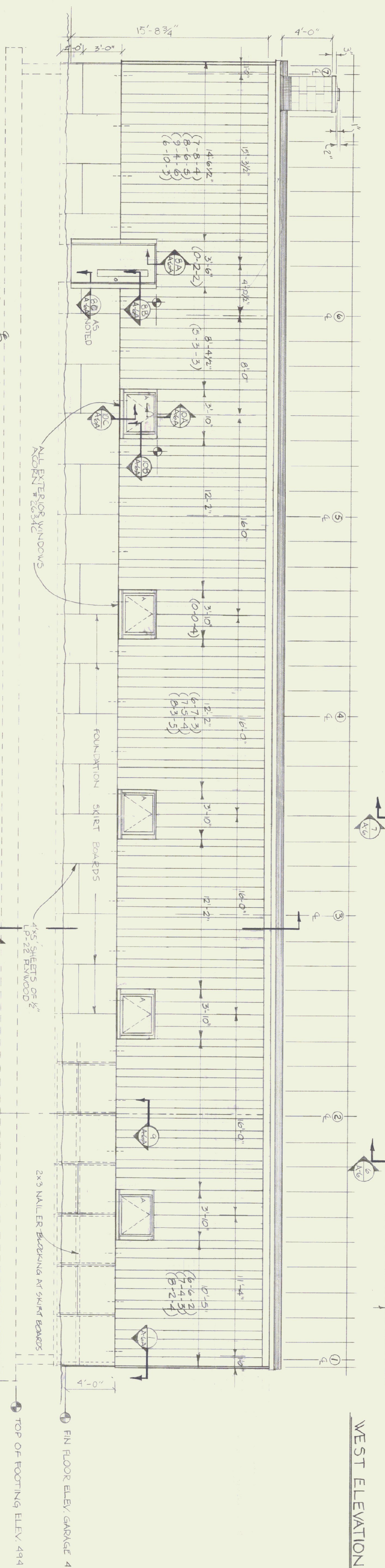
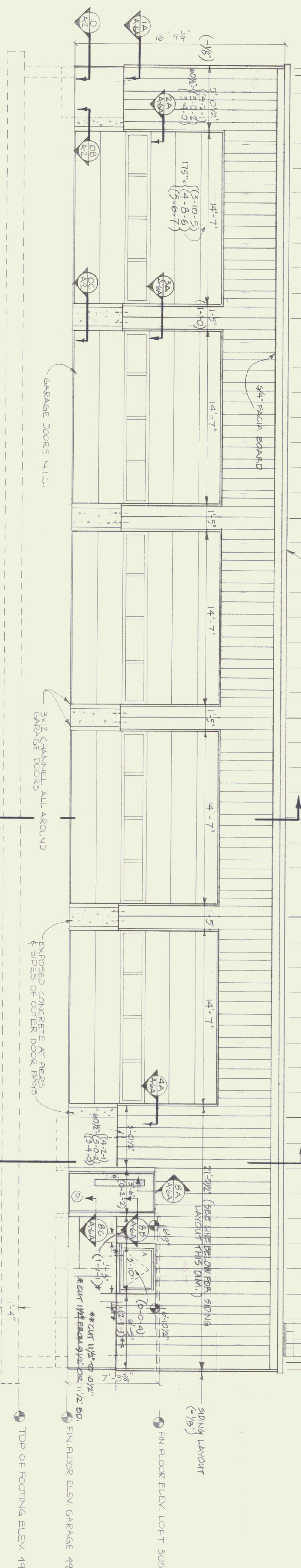


1ST, 2ND, 3RD ± OF LAYOUT  
 1ST, 2ND, 3RD ± OF LAYOUT  
 DATA  
 7/2" 9/2" 11/2" BOARDS

2'-0" MODULAR FRAMING LAYOUT

PC COATED FACIA (TRICAL)

CHIMNEY ELEV. 518'-8"



REVISED FOR BOARD & DIXON

STATE OF VERMONT  
 DIVISION OF STATE BUILDINGS  
 AGENCY OF ADMINISTRATION  
 MONTPELIER, VERMONT

AGENCY OF TRANSPORTATION  
 FIVE BAY GARAGE WITH OFFICE  
 CAMBRIDGE, VT DISTRICT 8

GARAGE ELEVATIONS

DATE: 1/7/82  
 SCALE: 1/4" = 1'-0"  
 DRAWN BY: PA RASETTI  
 APPROVED BY: [Signature]

REVISIONS:  
 420/83 AVP

DWG. NO. A-4  
 5 OF 11