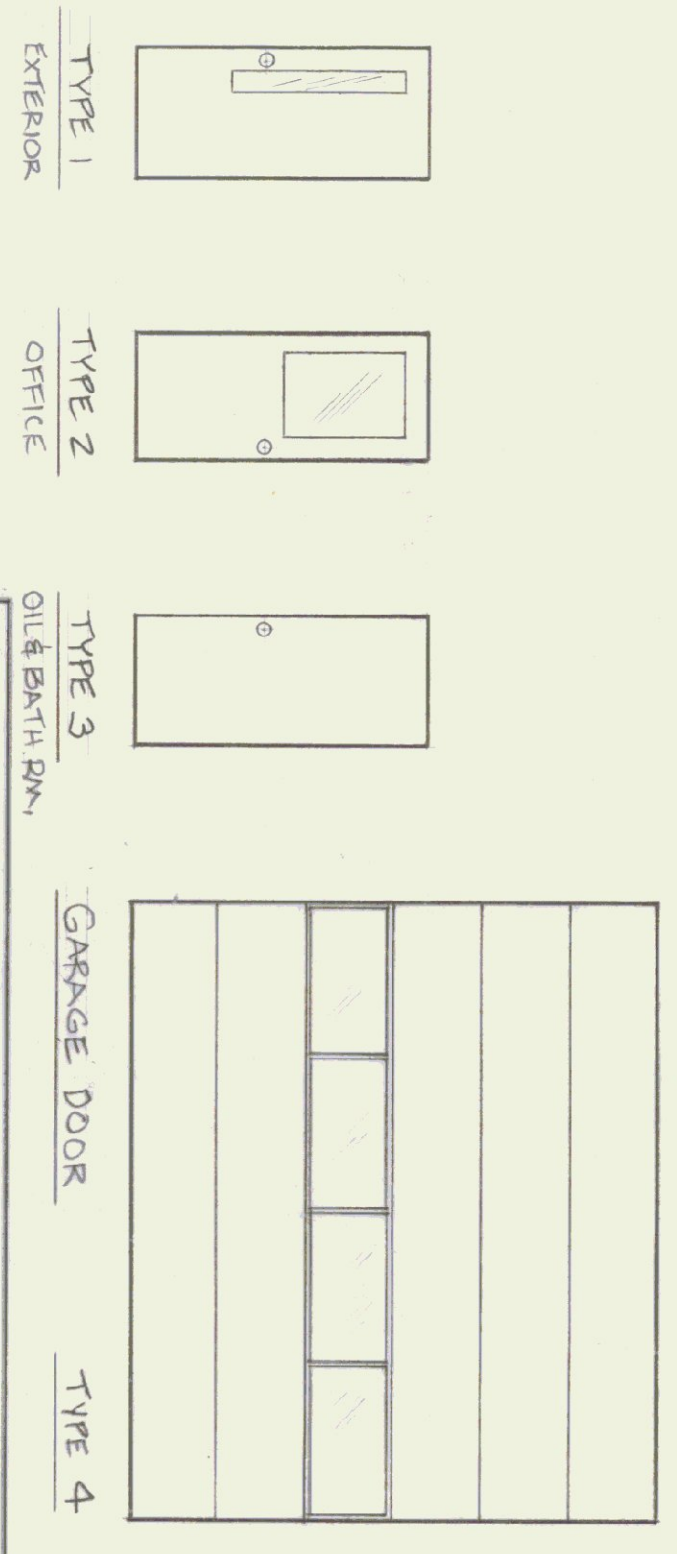


**DOOR SCHEDULE**

| NO.        | QUANTITY | SIZE          | TYPE | MATERIAL        | HASPS/SET# | REMARKS  |
|------------|----------|---------------|------|-----------------|------------|--|
| D1, D2, D3 | 3        | 3'-0" x 7'-0" | 1    | INSULATED METAL | D1-D3-1    | WIRE GLASS, WEATHERSTRIP & SWEEP                         |
| D4         | 1        | 2'-8" x 6'-8" | 2    | HOLLOW METAL    | 2          |  |
| D5         | 1        | "             | 3    | "               | 4          |  |
| D6         | 1        | "             | 3    | "               | 2          |  |
| D7-11      | 5        | 1'-4" x 7'-0" | 4    | INSULATED WOOD  | -          | OVERHEAD DOOR SERIES 724 W/ LEAN WINDOWS & FULL LXXX ROD |

**WINDOW SCHEDULE**

| NO. | QUANTITY | TYPE   | FRAME MATERIAL | ROUGH OPENING             | REMARKS                                      |
|-----|----------|--------|----------------|---------------------------|--|
| A   | 10       | AWNING | METAL          | 3'-6 1/2" W x 2'-6 1/2" H | ACORN BLDG. COMPONENTS 4300 SERIES - # 2634C |
| B   | 1        | FIXED  | METAL          | 3'-4" W x 3'-4" H         | HOLLOW METAL SPEC 08100                      |



STATE OF VERMONT  
 DIVISION OF STATE BUILDINGS  
 AGENCY OF ADMINISTRATION  
 MONTPELIER, VERMONT

AGENCY OF TRANSPORTATION  
 FIVE BAY GARAGE WITH OFFICE  
 CAMBRIDGE, VT, DISTRICT B

FLOOR PLANS, 1/4" SECTION, & DOOR & WINDOW SCHEDULES

DATE: 11/1/83  
 DRAWN BY: J. OSTRUM  
 SCALE: AS NOTED  
 APPROVED BY: J. OSTRUM

REVISIONS:  
 1/1/83 AVP

DWG. NO. A-3  
 4 OF 11