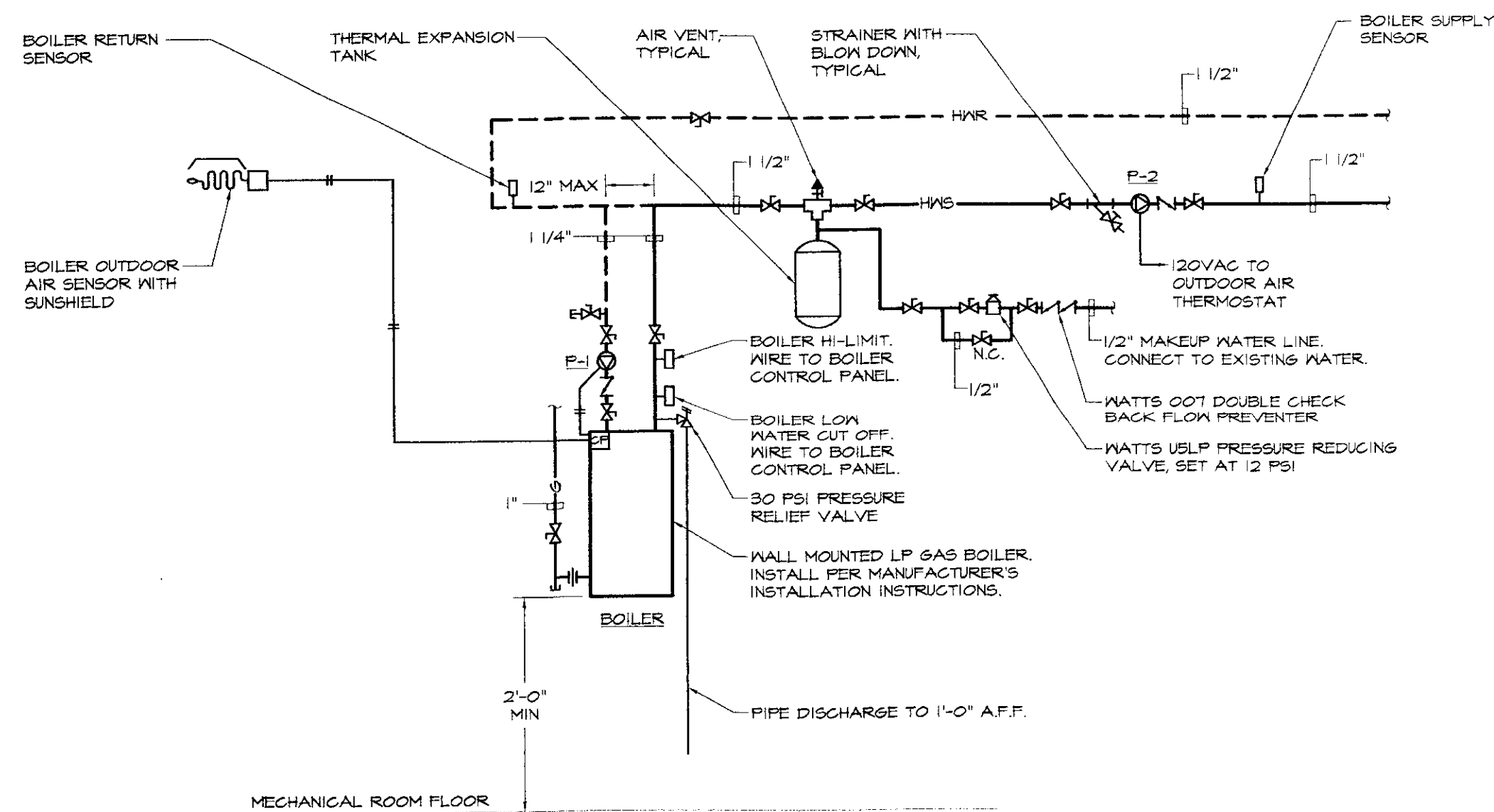


**MECHANICAL LEGEND & ABBREVIATIONS**

- BALL VALVE
- CHECK VALVE
- BALANCING VALVE
- BACKFLOW PREVENTER
- SELF-CONTAINED RADIATION CONTROL VALVE
- DRAIN VALVE WITH CAP AND CHAIN
- AIR VENT
- PRESSURE GAUGE
- TEMPERATURE GAUGE
- HOT WATER SUPPLY
- HOT WATER RETURN
- PIPE RISER
- PIPE DROP
- PIPE CAP
- PIPE UNION
- PIPE SLEEVE
- UNIT HEATER
- BASEBOARD RADIATION
- THERMOSTAT  
SUBSCRIPTS: E = 120VAC, C = COOLING
- ACCESS PANEL
- ABOVE FINISHED FLOOR
- BACK DRAFT DAMPER
- MECHANICAL CONTRACTOR
- PLUMBING CONTRACTOR
- ELECTRICAL CONTRACTOR
- GENERAL CONTRACTOR
- NORMALLY CLOSED
- NORMALLY OPEN
- EQUIPMENT TYPE  
E=EXISTING
- BASEBOARD RADIATION TAG
- UNIT HEATER TAG
- UNIT HEATER
- SECTION NUMBER  
DRAWING NUMBER
- LP GAS PIPING
- LP GAS REGULATOR
- PUMP TAG
- MOTORIZED DAMPER
- LOUVER TAG



**BOILER/SYSTEM PIPING SCHEMATIC**  
NOT TO SCALE

CIRCULATOR PUMP SCHEDULE										PLAN SYMBOL	P-1, P-2
No.	MANUFACTURER	SERIES	MODEL	MIN. GPM	HEAD (FT. HD.)	MOTOR				REMARKS	
						HP	VOLT	PH	RPM		
P-1	TACO	00	0011	15.0	10	1/8	115	1	3250	BOILER PUMP	
P-2	TACO	00	0011	12.4	20	1/8	115	1	3250	SYSTEM PUMP	

NOTES:  
1) PUMP PROVIDED WITH BOILER AND SHIPPED LOOSE FOR FIELD INSTALLATION.

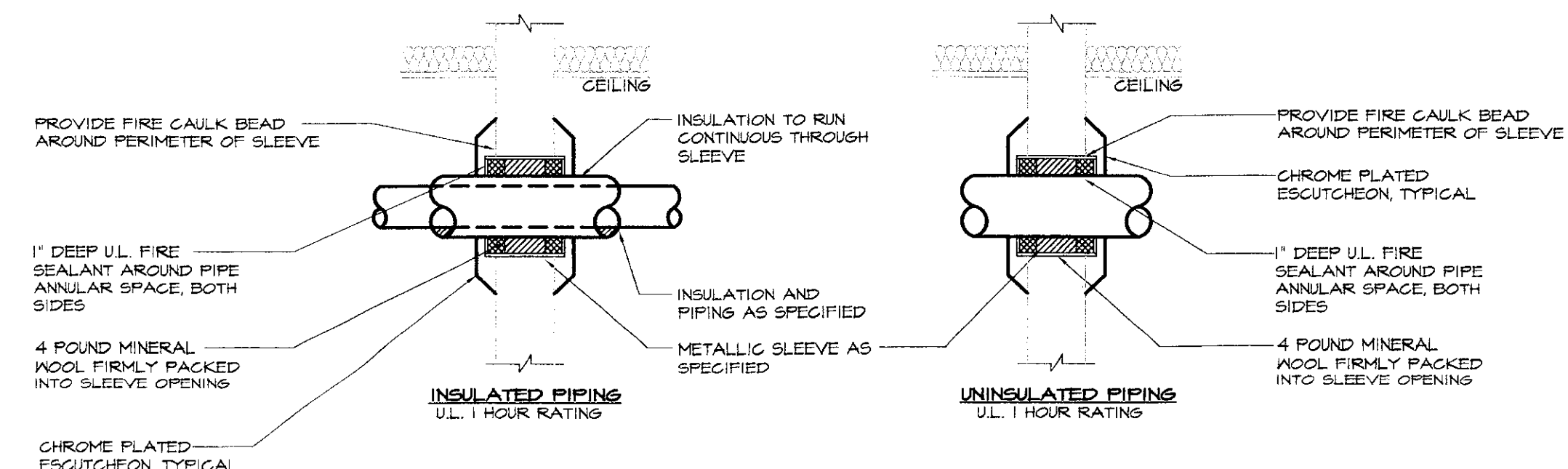
UNIT HEATER SCHEDULE											PLAN SYMBOL	UH-1, UH-2
No.	MANUFACTURER	MODEL	SIZE	BTUH	E.W.T. (°F)	GPM	CFM	MOTOR			REMARKS	
								HP	VOLT	PH		
UH-1	VULCAN	HV-72	-	47,000	180	4.7	950	1/20	115	1	SOUND CLASS 1, FAN, 900 RPM MAX	
UH-2	VULCAN	HV-72	-	47,000	180	4.7	950	1/20	115	1	SOUND CLASS 1, FAN, 900 RPM MAX	

BASEBOARD RADIATION SCHEDULE										PLAN SYMBOL	○
TYPE	MANUFACTURER	MODEL	ENCLOSURE HEIGHT	MOUNTING HEIGHT	TIER	BTU/FT.	ELEMENT	A.W.T. (°F)	FINISH	REMARKS	
A	STERLING HYD.	SENGR	9 13/16"	9 13/16"	1	740	2 3/4" X 2 1/2", 55 FINS/LF	180	W.E.		

NOTES:  
1) PROVIDE REMOVABLE END ACCESS PANELS.

LOUVER SCHEDULE									PLAN SYMBOL	⬆
No.	MANUFACTURER	SERIES	MODEL	SIZE	AIR PATTERN	DAMPER	FINISH	REMARKS		
L-1	RUSKIN	ELF	ELF9TBDX	12" X 12"	FIXED	-	B.E.	NOTE 1		

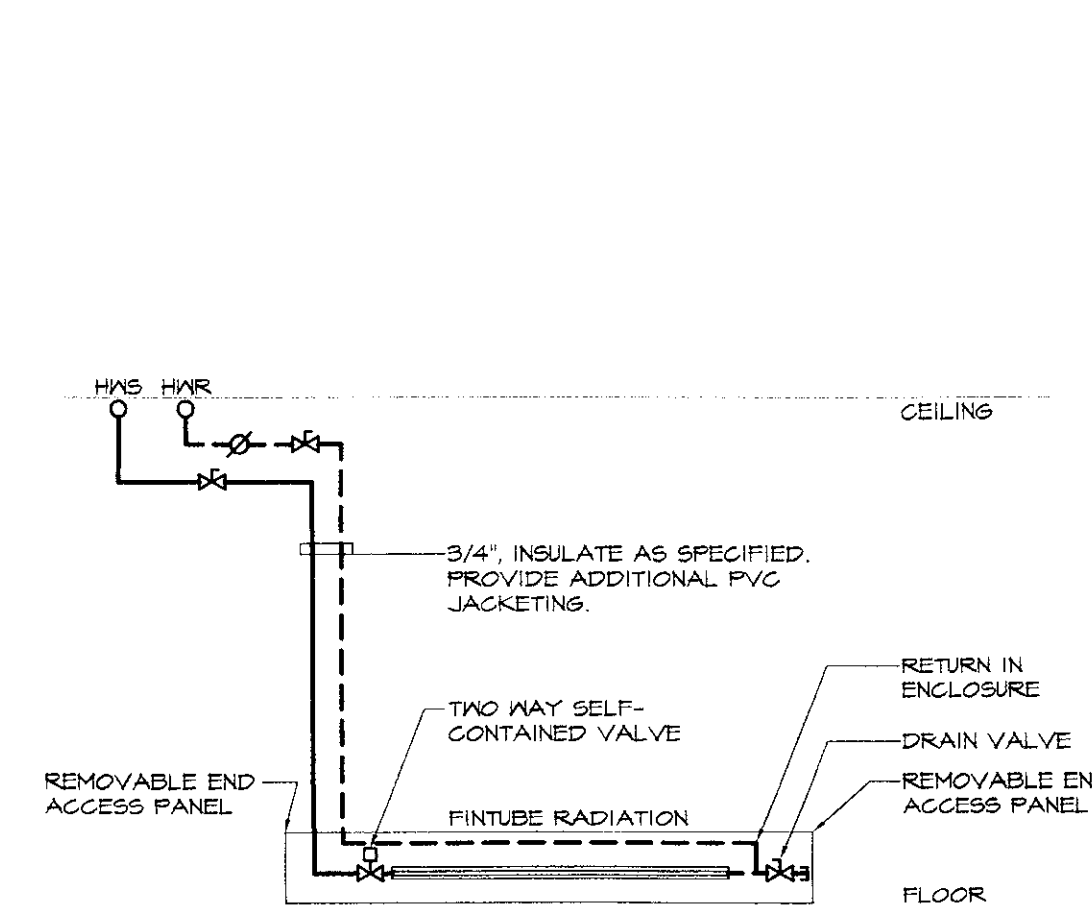
NOTES:  
1) PROVIDE BAKED ENAMEL FINISH. COLOR TO BE SELECTED BY OWNER. PROVIDE GALVANIZED BIRDSCREEN.



**WALL PIPE PENETRATION DETAILS**

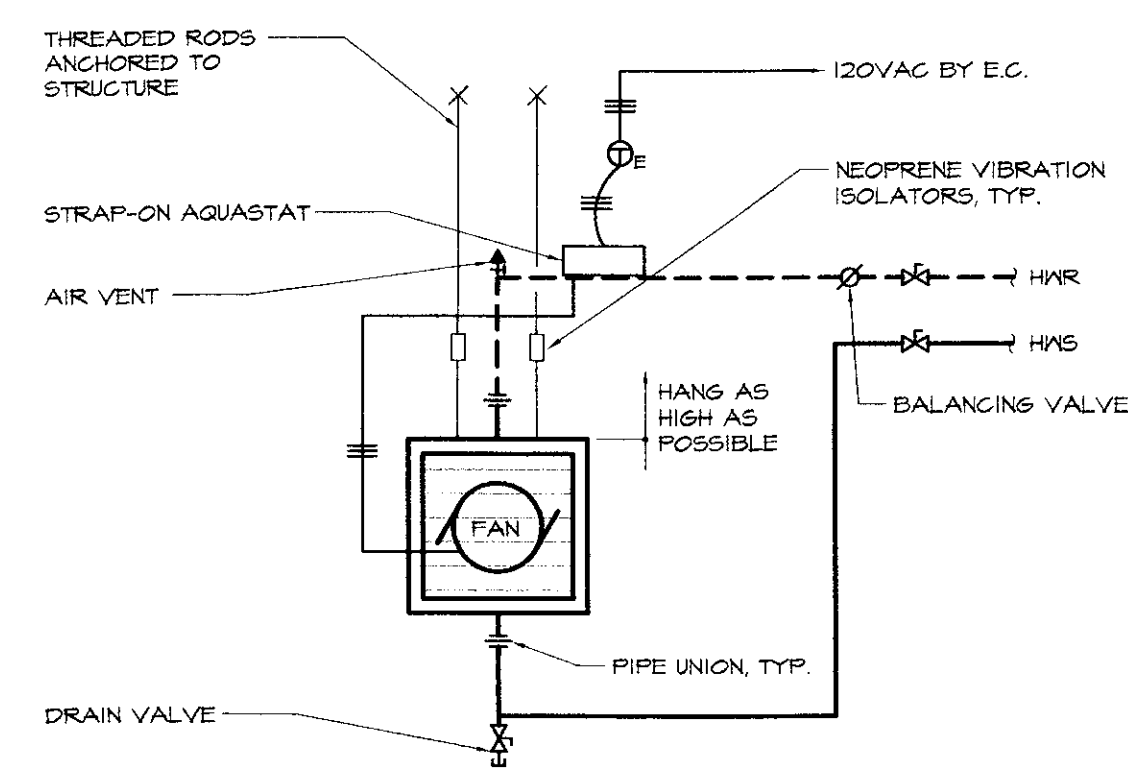
NOT TO SCALE

- NOTE:  
1) FOLLOW FIRE SEALANT MANUFACTURER'S WRITTEN INSTALLATION INSTRUCTIONS IN CONJUNCTION WITH REQUIREMENTS AS DETAILED.  
2) ALL WALL PIPE PENETRATIONS SHALL BE INSTALLED PER THIS DETAIL.  
3) DETAIL BASED ON STI "SPEC-SEAL" FIRE STOPPING PRODUCTS. ALTERNATE MANUFACTURER'S INSTALLATION REQUIREMENTS MAY VARY.



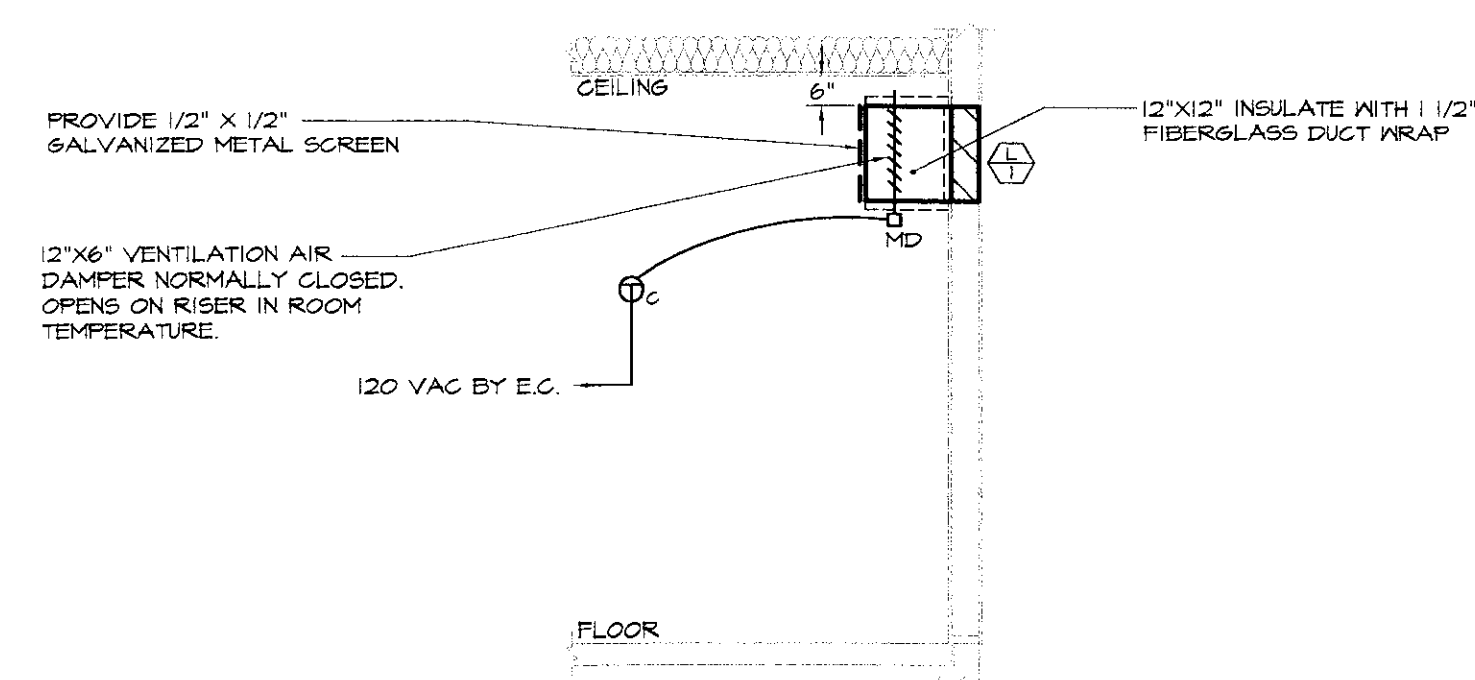
**RADIATION PIPING DETAIL**

NO SCALE



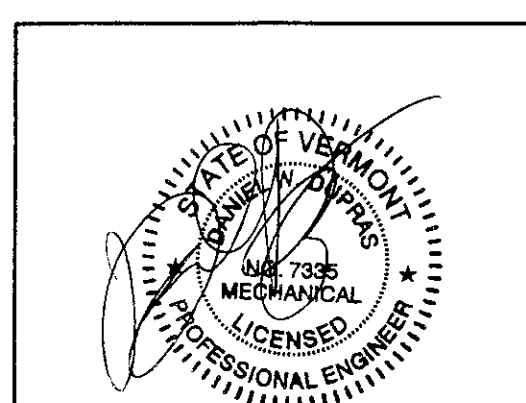
**UNIT HEATER PIPING DETAIL**

NO SCALE



**MECHANICAL ROOM VENTILATION AIR DETAIL**

NOT TO SCALE



NO.	ISSUED FOR	DATE
2	REVISED FOR BIDDING	12/21/2005
1	BIDDING	10/20/2005



HEATING, VENTILATION, & AIR CONDITIONING,  
PLUMBING, FIRE PROTECTION, & ELECTRICAL

CHARLES F. LANE, P.E.  
DANIEL W. DUPRAS, P.E.

51 KILLINGTON AVENUE,  
RUTLAND, VERMONT 05701  
TELEPHONE: (802)747-3346  
FAX/MODEM: (802)747-3356

**MECHANICAL DETAILS, SCHEDULES & LEGEND**

NEW HEATING SYSTEM  
BRIDGE SHOP/STOCK BUILDING  
ST. JOHNSBURY AOT  
ST. JOHNSBURY, VT

M  
2