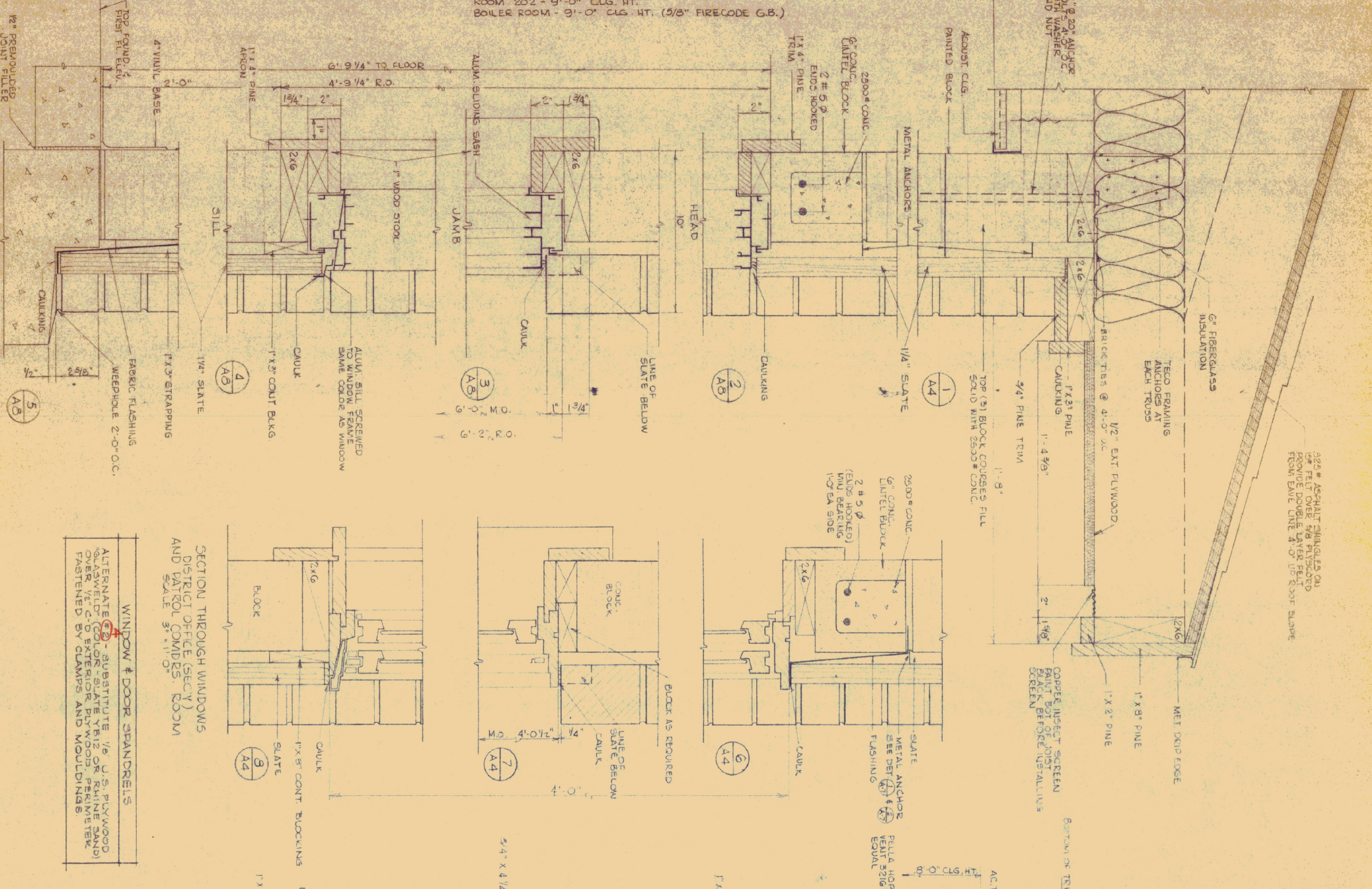


ALL ROOMS 8'-0" (CEILING HT.)
 ROOM 202 - 9'-0" CLG. HT.
 BOILER ROOM - 9'-0" CLG. HT. (3/2" FIRECODE G.B.)

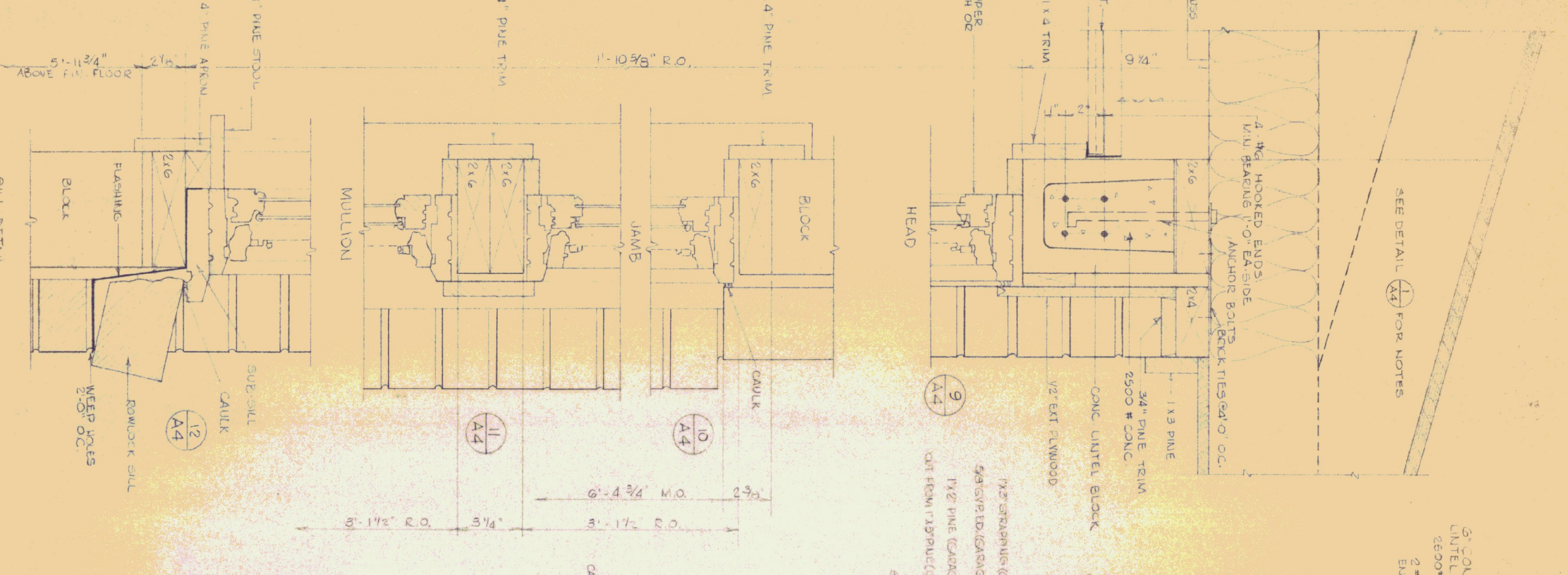
TYPICAL WALL SECTION THRU WINDOW
 SCALE 3/4" = 1'-0"



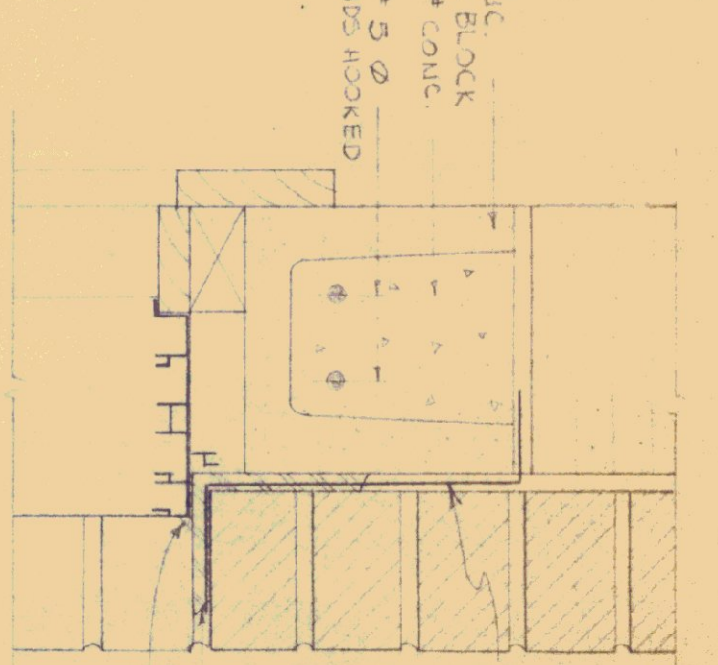
WINDOW & DOOR SPANDRELS
 ALTERNATE (A) SUBSTITUTE 1/2" J.S. PLYWOOD OVER 1/2" C.O. EXTERIOR PLYWOOD. PERMITTER FASTENED BY CLAMPS AND MOLDINGS.

SECTION THROUGH WINDOWS AND DOOR COMPS. ROOM SCALE 3/4" = 1'-0"

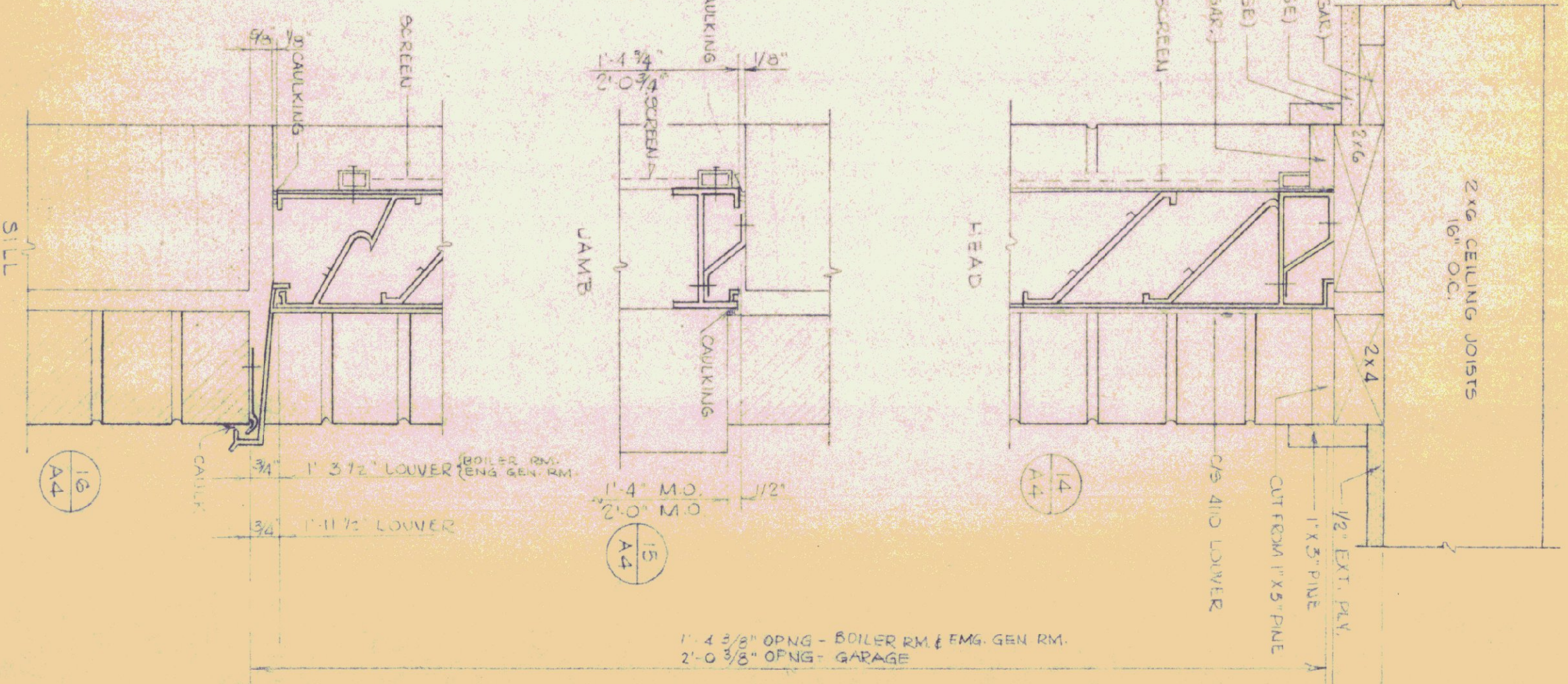
DETAILS OF HOPPER WINDOW
 SCALE 3/4" = 1'-0"



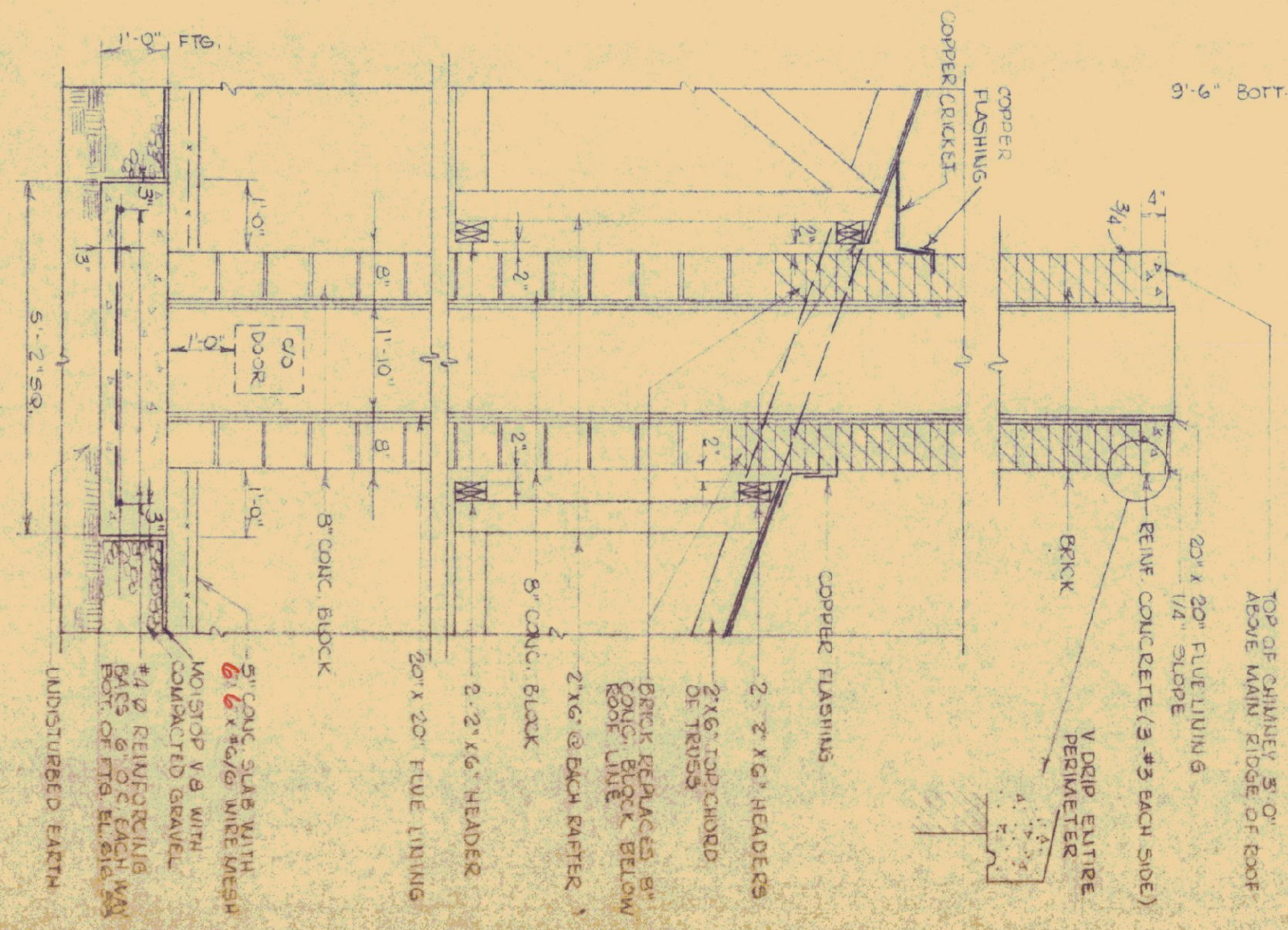
WINDOW HEAD W/O SLATE
 SCALE 3/4" = 1'-0"



GARAGE LOWER DETAIL
 SCALE 3/4" = 1'-0"



TYPICAL CHIMNEY SECTION
 SCALE 1/2" = 1'-0"



REVISIONS		
REVISION	BY	DATE

STATE OF VERMONT
 BUILDINGS DIVISION
 DEPARTMENT OF ADMINISTRATION
 MONTPELIER, VERMONT

ST. JOHNSBURY OFFICE BUILDING
 Window Details, Chimney Details

DATE: 5/5/72	DESIGNED BY: J.S.	CHECKED BY: J.S.	DWG. NO. A-7
DRAWN BY: J.S.	APPROVED BY: J.S.	DATE: 6/29/72	8 OF 17