

GENERAL NOTES

TRUSS NOTES

TRUSS MANUFACTURER TO PROVIDE DEPT. OF STATE BUILDINGS ENGINEER A SET OF ENGINEERED & STAMPED DRAWINGS FOR APPROVAL PRIOR TO TRUSS MANUFACTURE.
 TRUSS MANUFACTURER TO PROVIDE THE CONTRACTOR WITH ALL NECESSARY INSTRUCTIONS FOR PROPER TRUSS INSTALLATION, ANCHORAGE, BRACING, LIFTING, ETC.
 TRUSS DESIGN LOADS IN ACCORDANCE WITH THE 1987 B.O.C.A. FOR VERMONT.
 MANIKULU LOADS:
 L1E - PER 1987 B.O.C.A. FOR VERMONT (40 PSF MIN.)
 D2D0 - AS CALCULATED FROM TRUSS & ROOF MATERIAL
 WIND - 25 PSF
 DIAGONAL WIND BRACING PER TRUSS MANUFACTURER.

LUMBER NOTES:

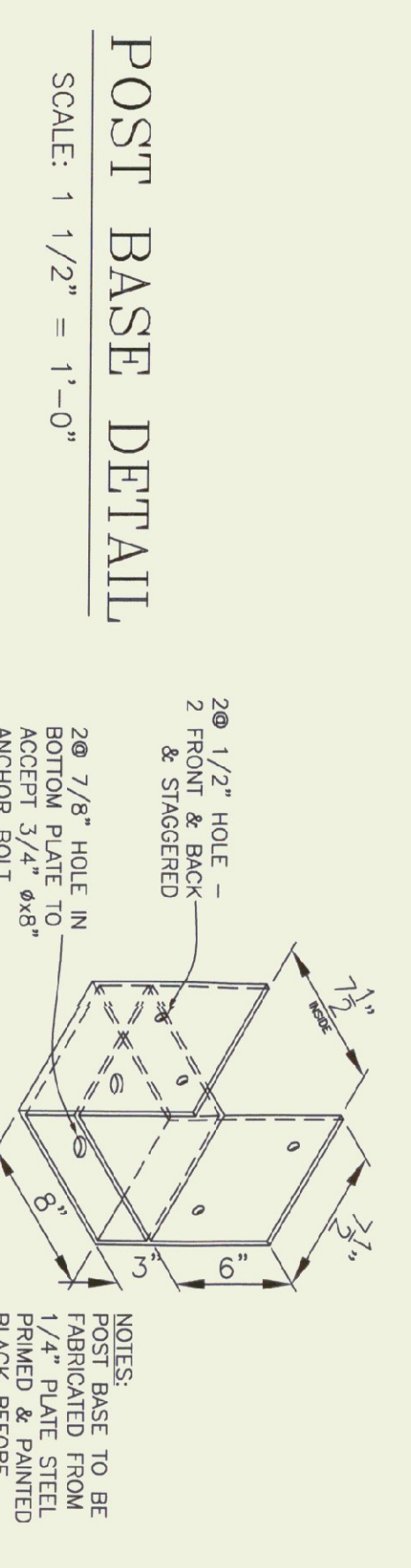
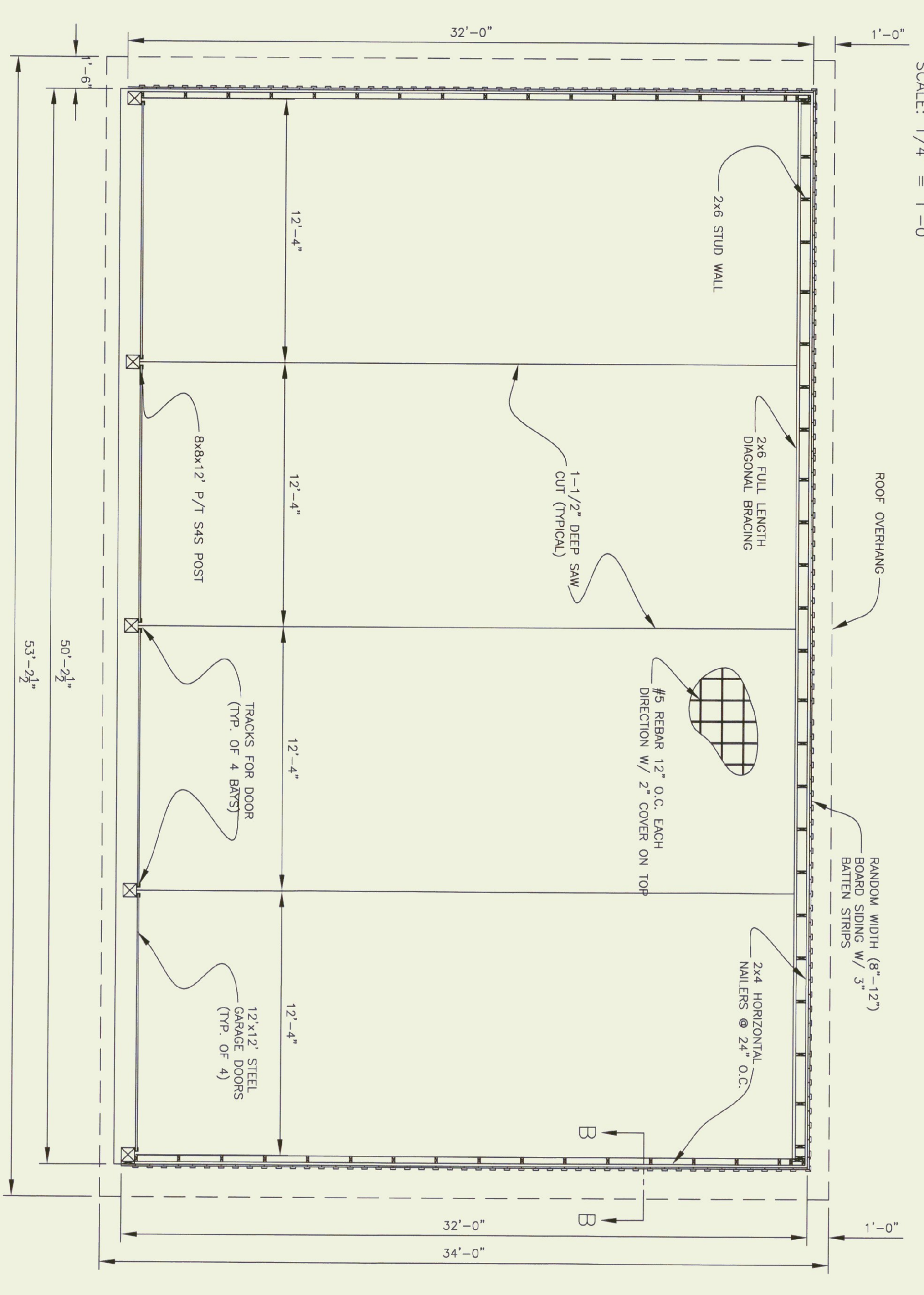
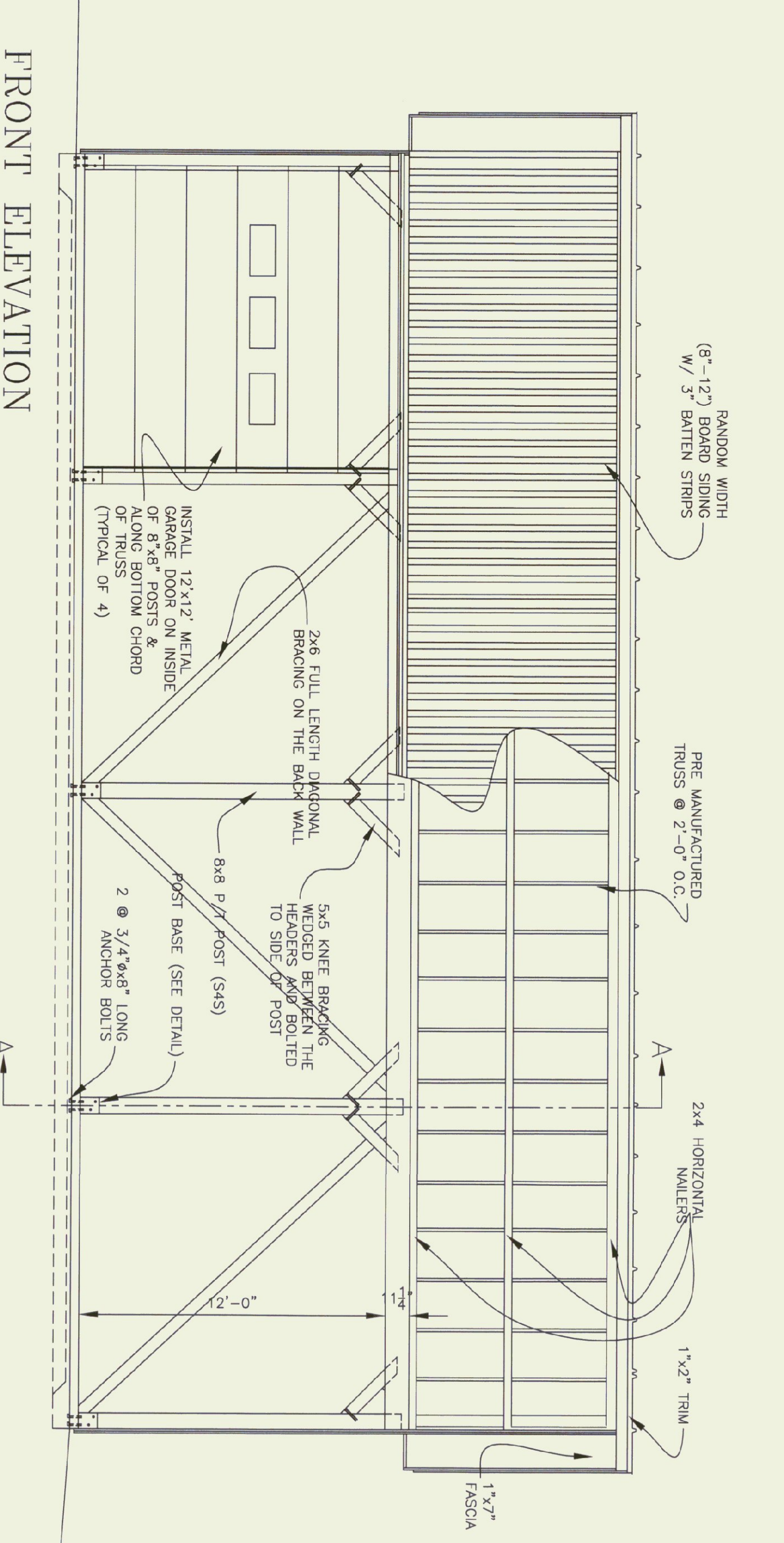
FRAMING MEMBERS TO BE KILN DRIED CONSTRUCTION GRADE SPRUCE S4S 19% MOISTURE CONTENT.
 PLATES & NAULERS IN CONTACT WITH CONCRETE TO BE COA 0.40 TREATED BOARD & BATTEN SIDING, TRIM, AND SOFFIT MATERIAL TO BE NATIVE ROUGH SAWN WHITE PINE, SPRUCE, EASTERN FIR OR RED PINE. BOARDS TO BE RANDOM WIDTH 8"-12" - BATTEN 3".
 BOARD SIDING & BATTEN STRIPS TO BE FULL LENGTH (NO HORIZONTAL JOINTS).

FINISH NOTES:

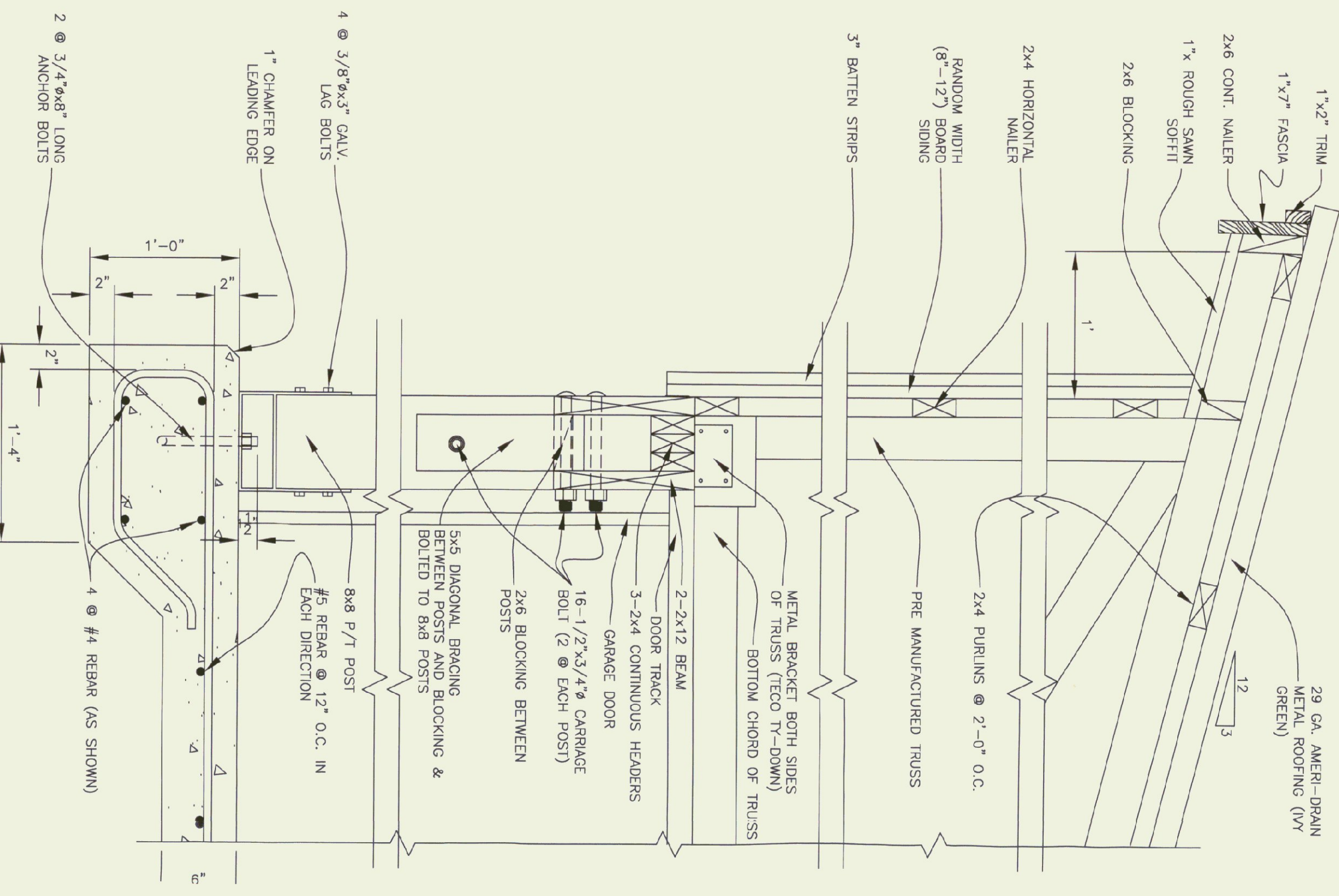
ALL FASTENERS TO BE GALVANIZED AND SHALL BE APPROPRIATELY SIZED.
 ALL BOARDS & BATTEN TO BE STANDED WITH ONE COAT (ALL SURFACES) PRIOR TO INSTALLATION. AFTER INSTALLATION EXTERIOR SIDING TO RECEIVE ONE ADDITIONAL COAT OF STAIN.
 ROOFING COLOR: IVY GREEN (BY AMERI-DRAIN)
 STAIN TO BE OLYMPIC OIL BASE SEMI-TRANSPARENT OXFORD BROWN #713.
CONCRETE NOTES: PER A.O.I. STANDARD.
 STRENGTH: 3000 PSI
 FINISH: FLOATED
 CURING METHOD: PER TABLE 901.17A

DOOR NOTES:

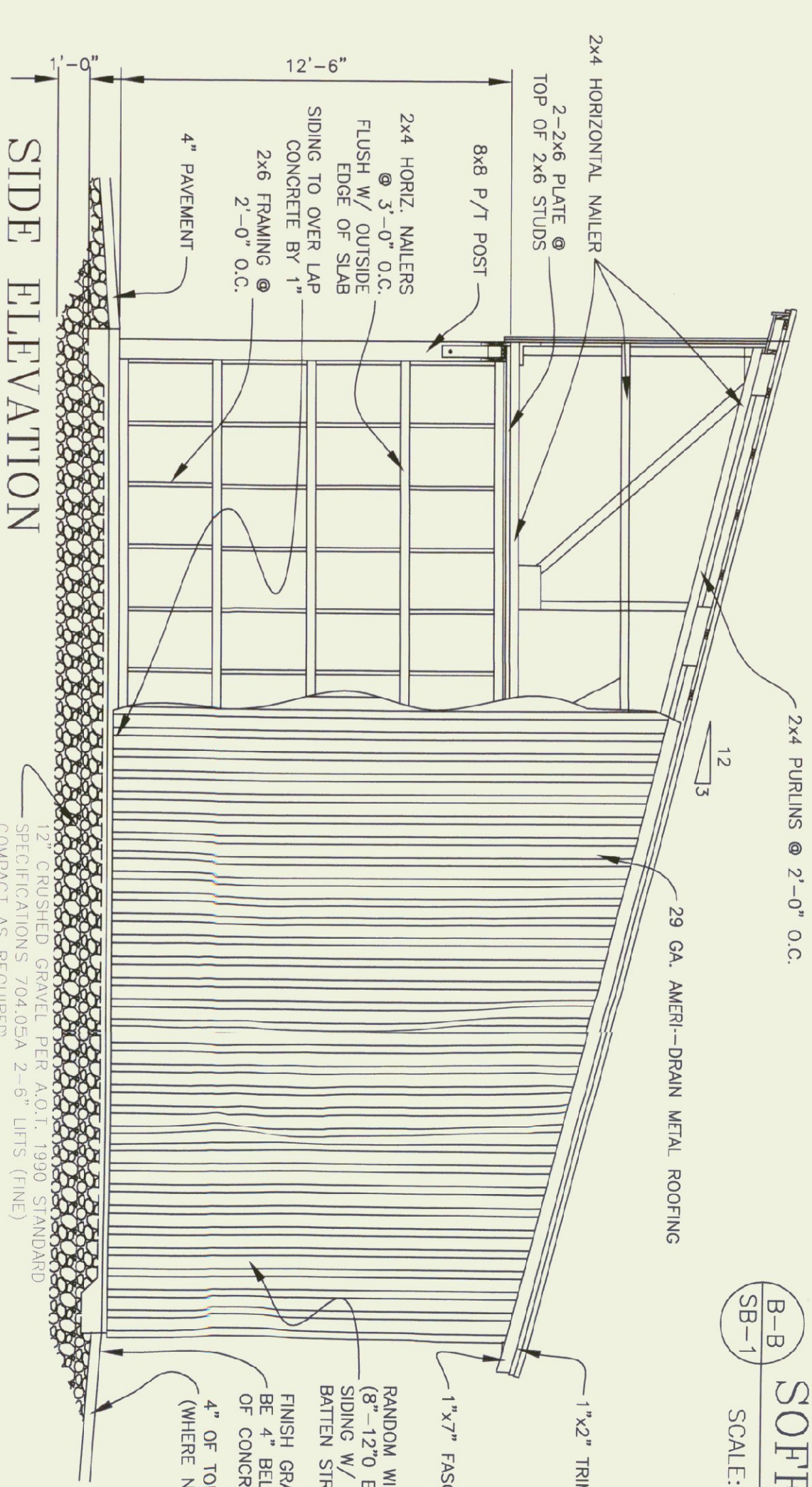
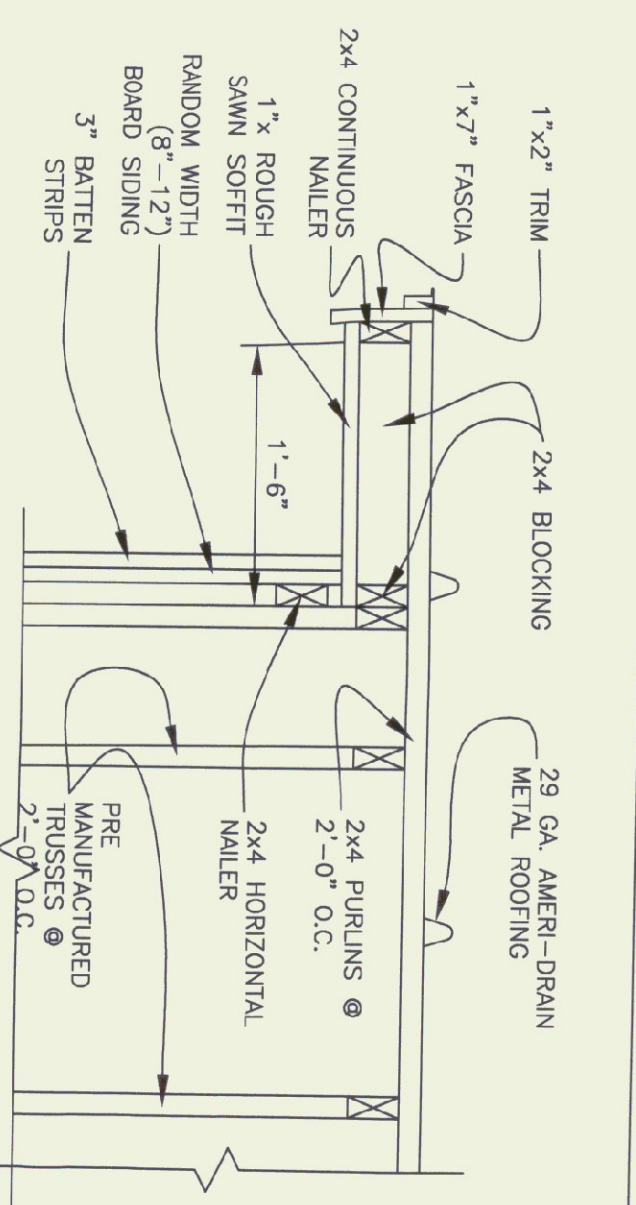
All garage doors to be steel with acrylic finish:
 overhanded one row of lites, 4th row



SECTION A-A
 SCALE: 1-1/2" = 1'-0"



SOFFIT DETAIL
 SCALE: 1" = 1'-0"



32' x 50' STORAGE SHED	LYNDONVILLE
SCALE: As Noted	A.O.I.T.
DATE: SEPT. 2002	
DRAWN BY: K.ROUELLE	
APPR. BY: R.BARRY	

REVISIONS	DATE	BY
9/1/99 BTM		
10/15/99 ADW		
09/05/01 BTM		
08/28/02 KDR		

AGENCY OF TRANSPORTATION
 LYNDONVILLE MAINTENANCE FACILITY
 STORAGE SHED
 LYNDONVILLE VERMONT



STATE OF VERMONT
 Department of Buildings
 and General Services
 Agency of Administration
 Montpelier, Vermont

