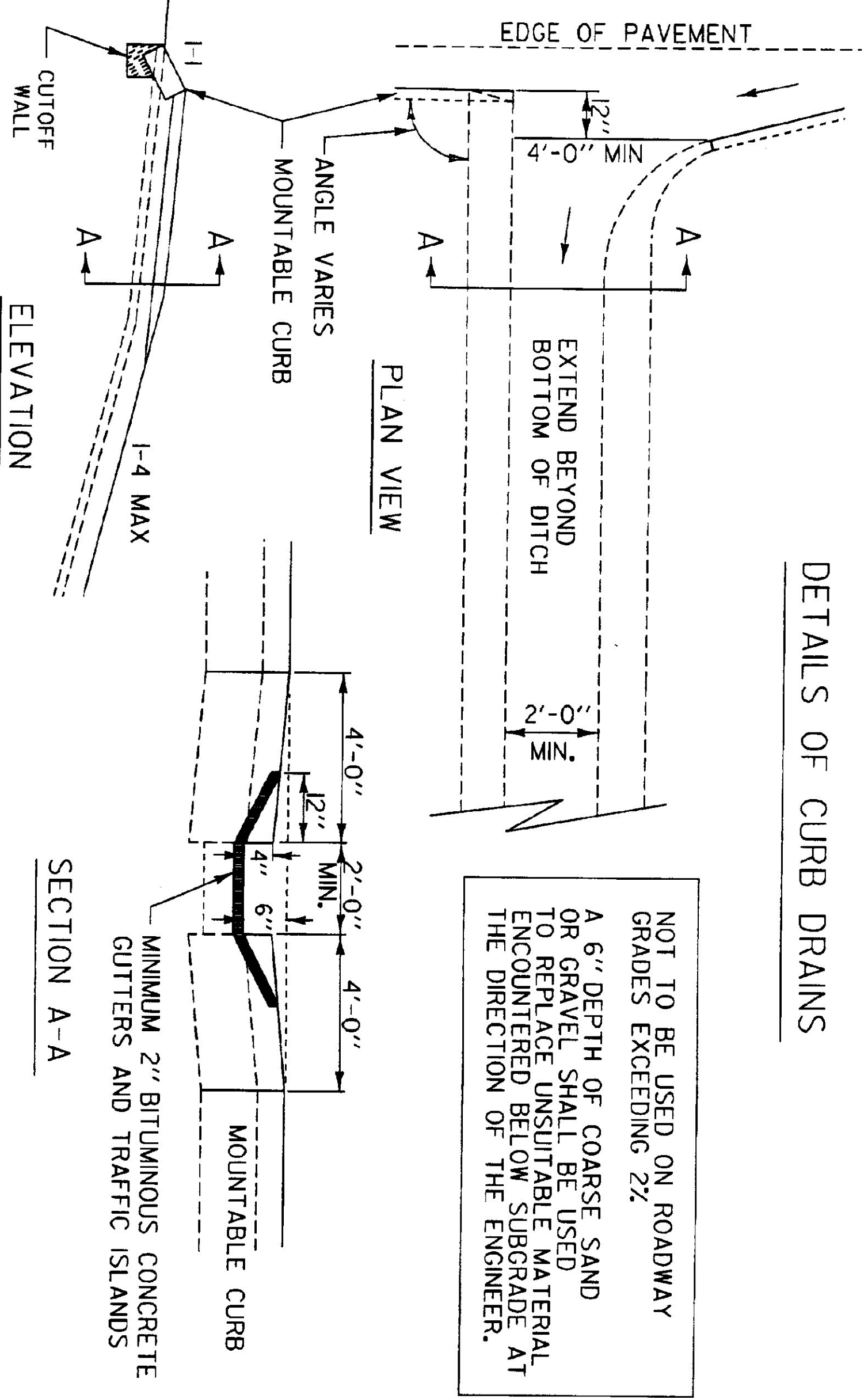
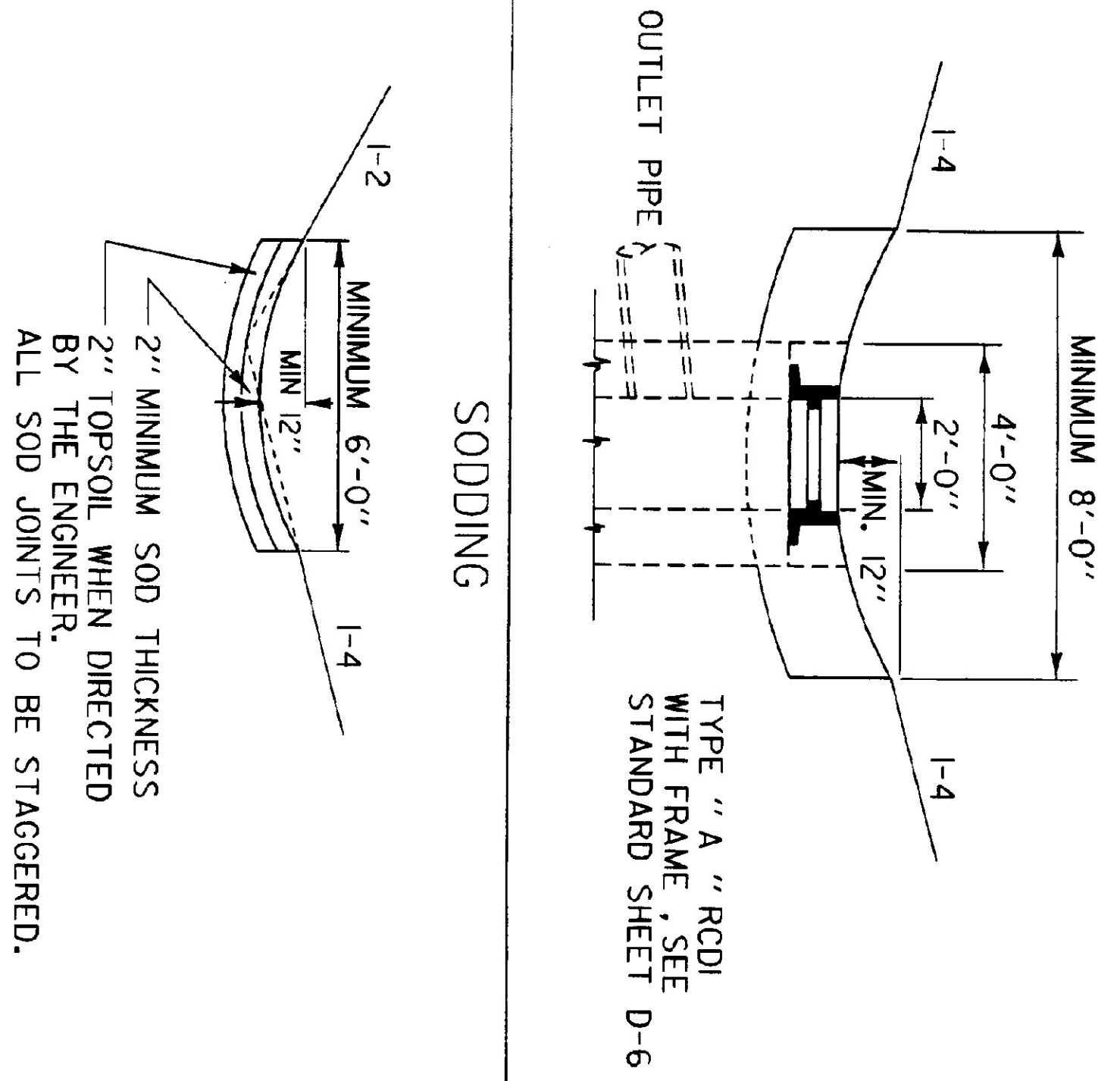


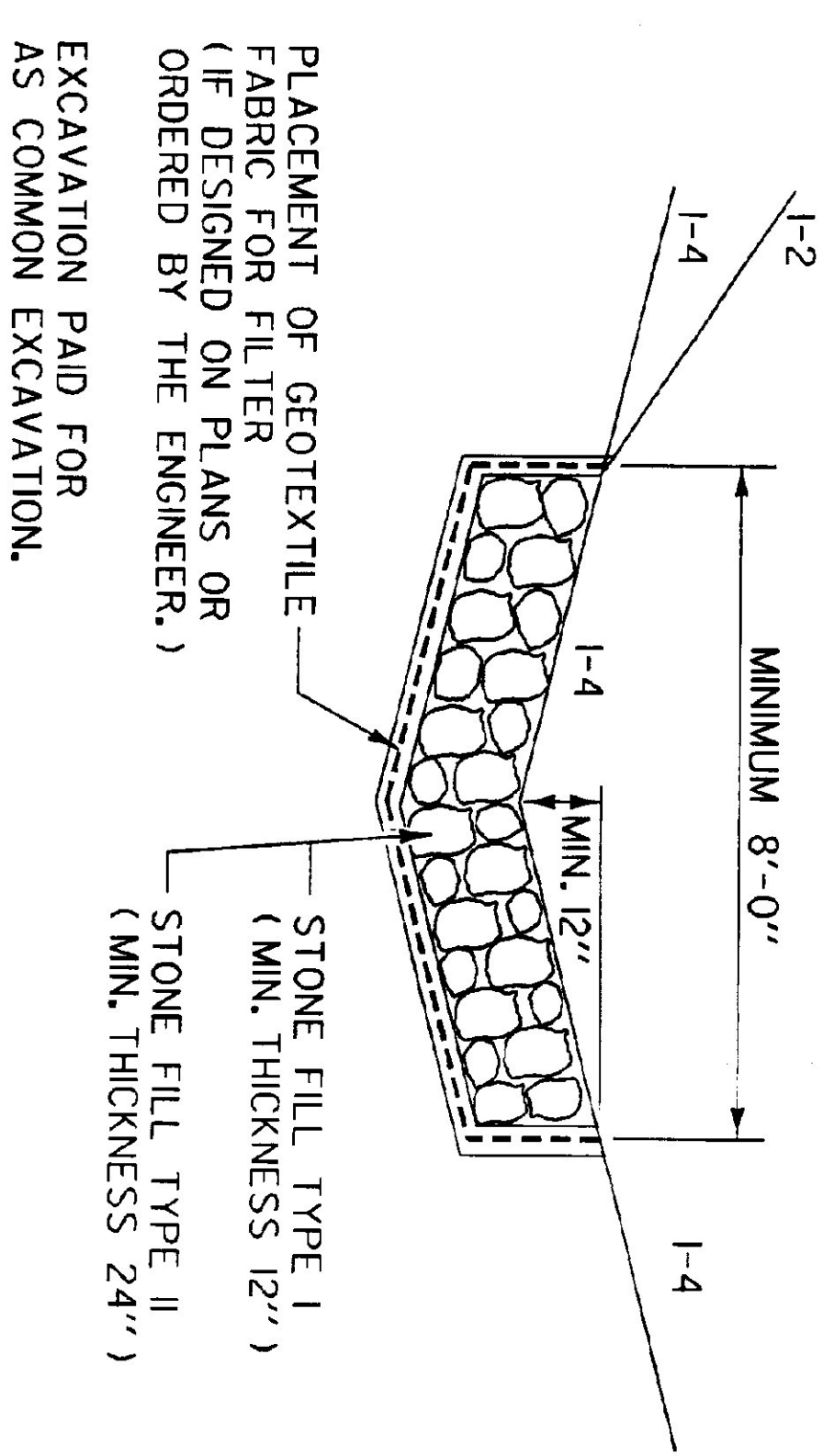
DETAILS OF CURB DRAINS



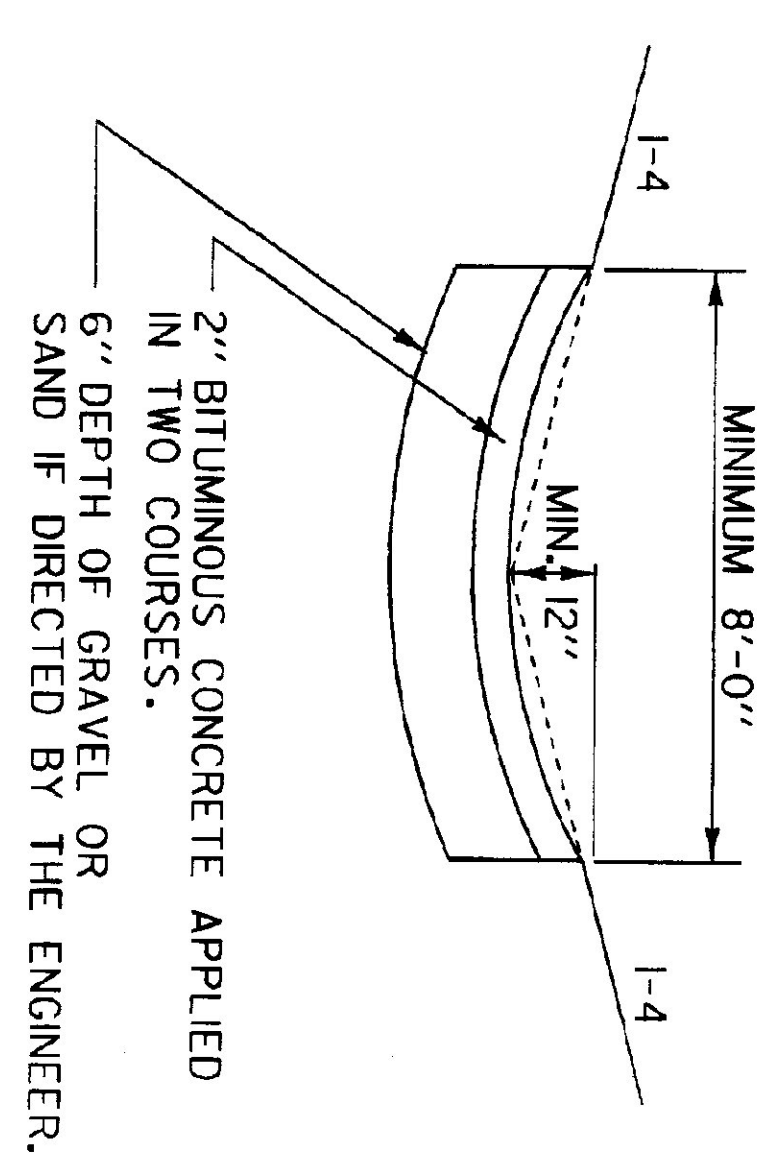
DROP INLET WITH GRATE IN TREATED CUTTER



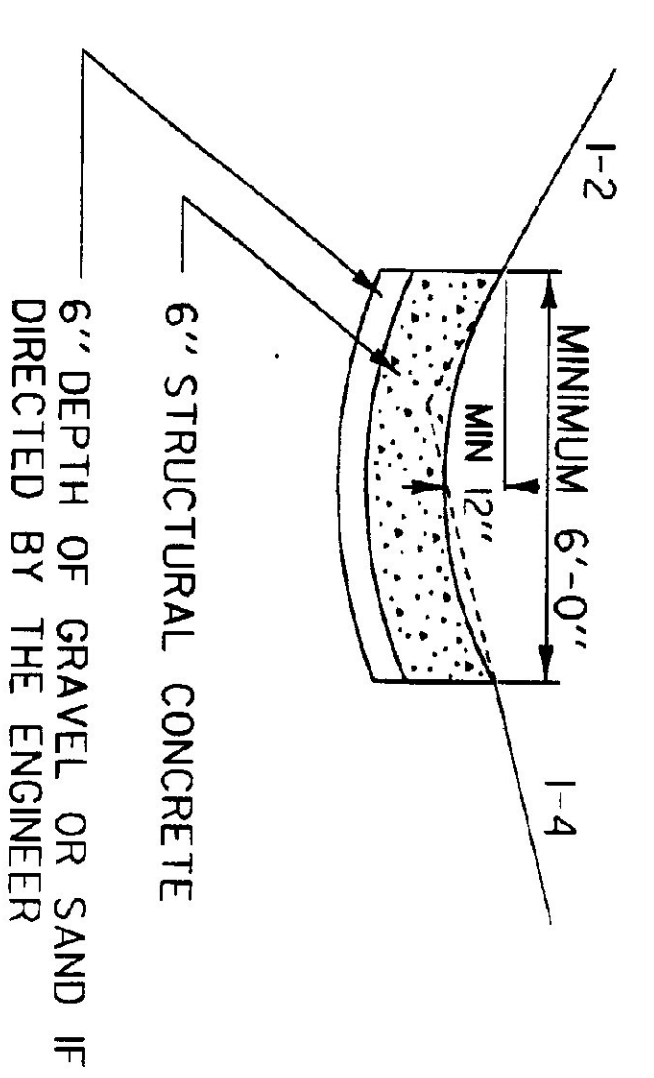
**STONE FILL TYPE I
STONE FILL TYPE II**



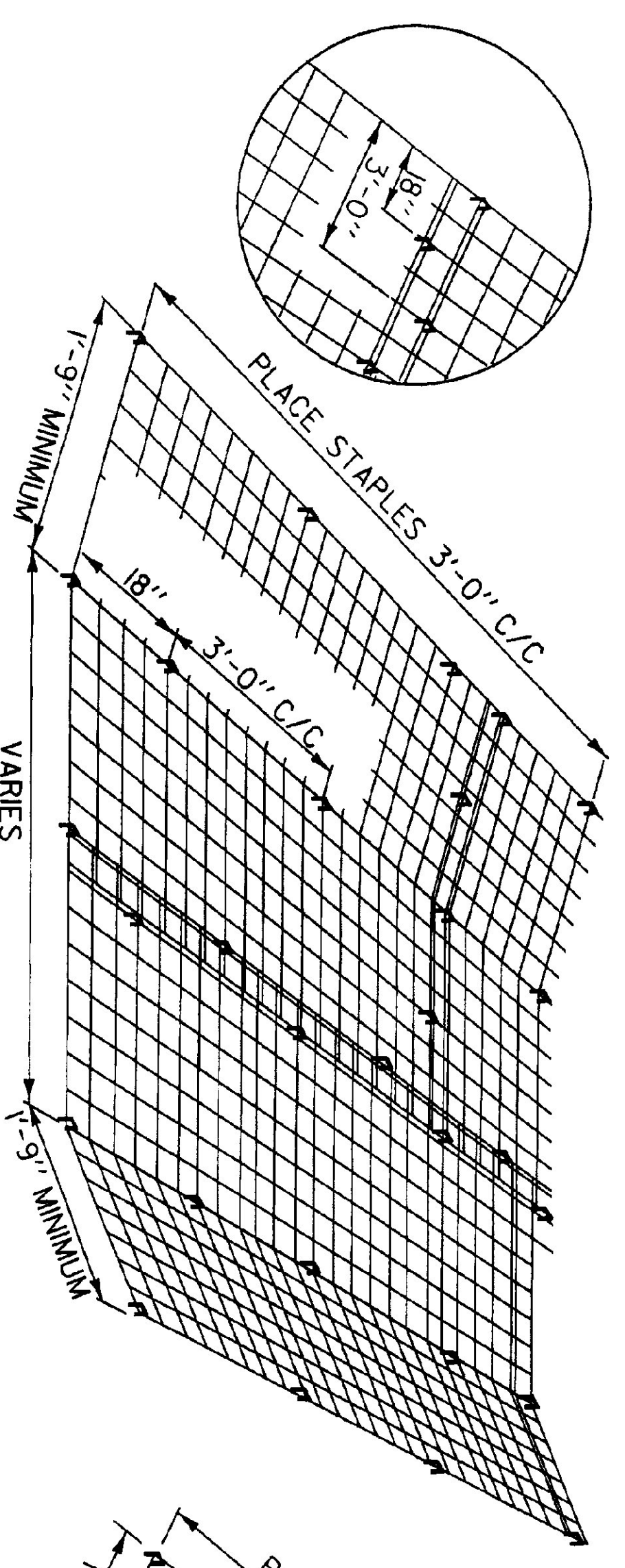
**BITUMINOUS CONCRETE GUTTERS
AND TRAFFIC ISLANDS**



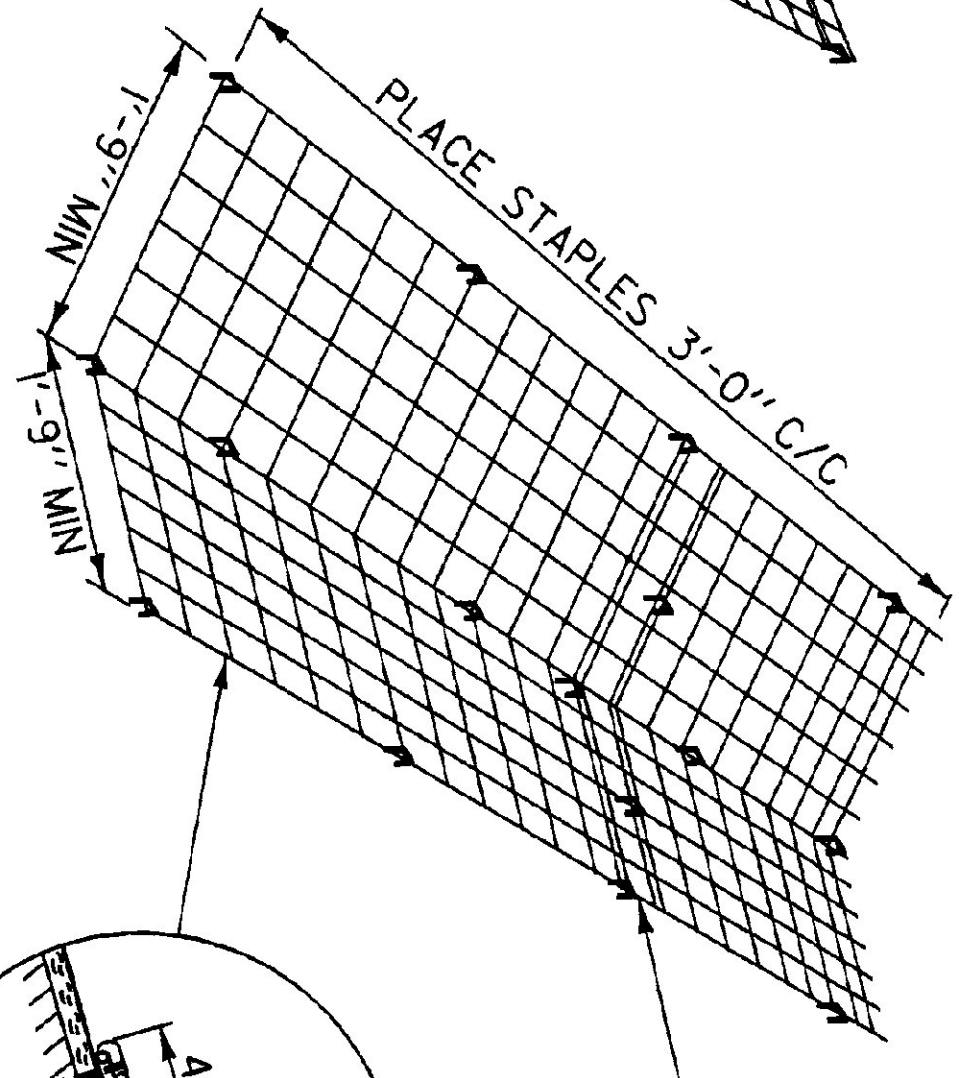
PORTLAND CEMENT CONCRETE GUTTER



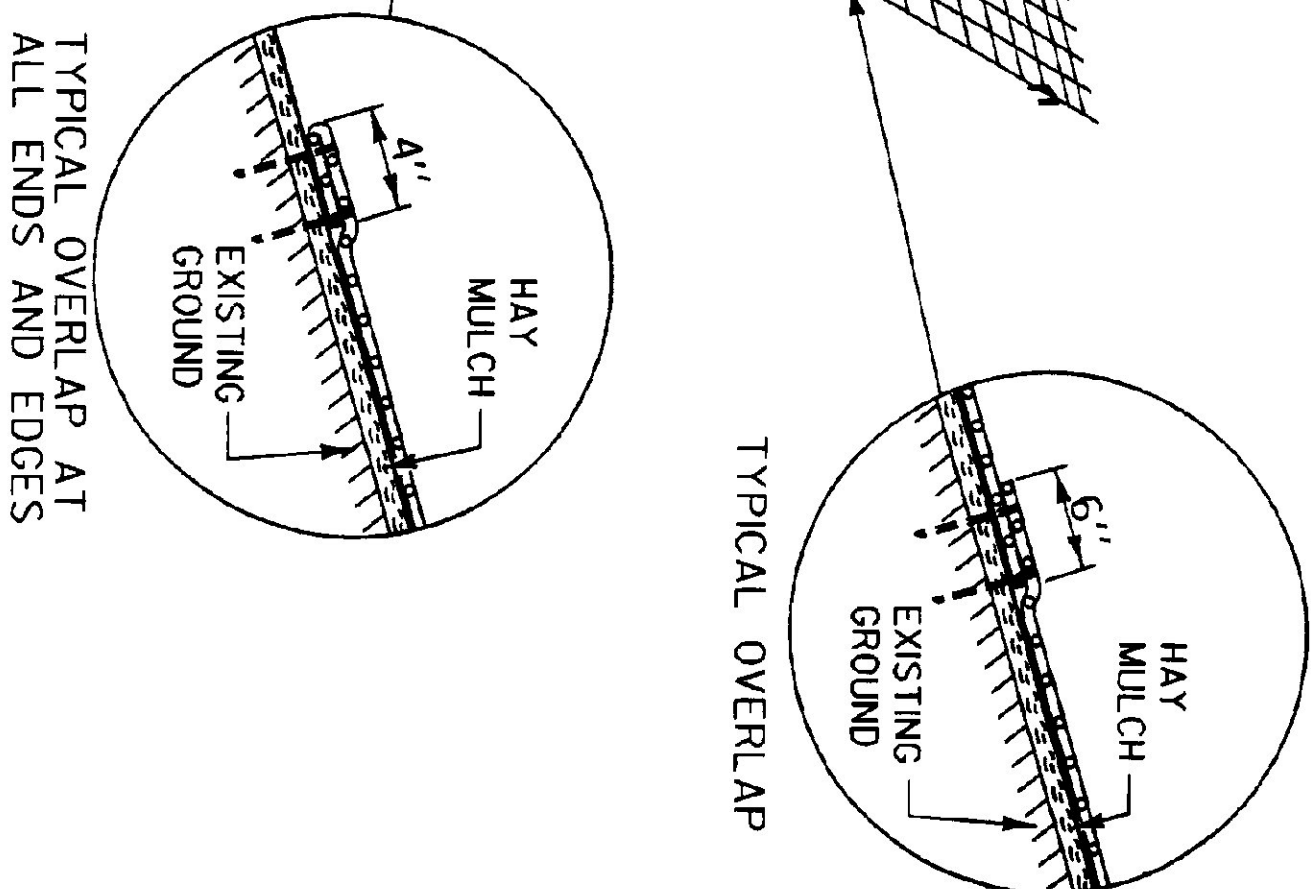
ON ALL OVERLAPS, PLACE STAPLES EVERY 18", ALTERNATING ON BOTH SIDES OF 6" OVERLAP.



TYPICAL FLAT BOTTOM DITCH



TYPICAL "V" DITCH



TYPICAL OVERLAP AT ALL ENDS AND EDGES

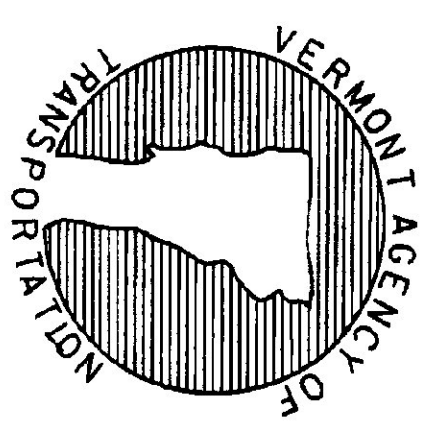
REVISIONS AND CORRECTIONS
APR. 2, 1986 - ORIGINAL APPROVAL DATE
JUNE 1, 1994 - REISSUED, WITHOUT CHANGE,
UNDER NEW SIGNATURES.

APPROVED

APPROVED FOR THIS PROJECT
AND/OR DESIGN REPRESENTATION,
FINAL APPROVAL PENDING.

Director of Engineering
Design Engineer

TREATED GUTTERS



STANDARD

D-3