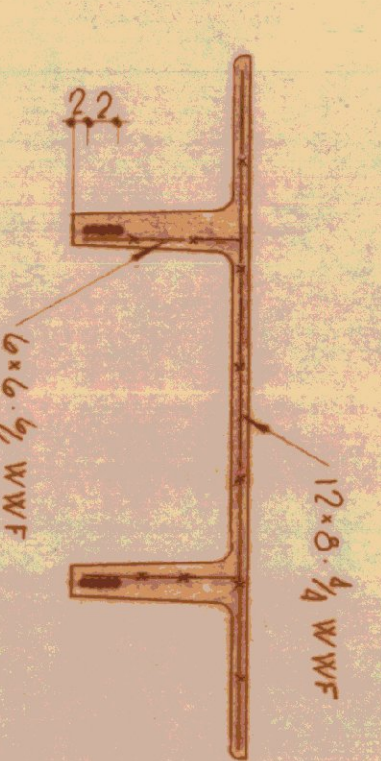
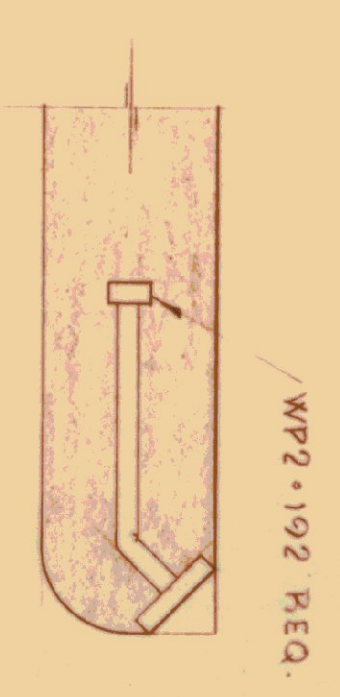


SECTION "A" (MESH NOT SHOWN)



SECTION "B" (END REINF. NOT SHOWN)



FLANGE DETAIL



NOTE : FINISH ENDS

GENERAL NOTES:

- UNSTRESS WILL NOT BE RESPONSIBLE FOR BEARING DIMENSIONS AFTER SHOP DRAWINGS HAVE BEEN APPROVED. DIMENSIONS SHOWN ARE PRESUMED TO BE CORRECT.
- CUSTOMER WILL PROVIDE DIMENSIONS AND LOCATION OF OPENINGS LARGER THAN 8 INCHES TO BE CAST IN UNITS. OPENINGS NOT SHOWN ARE TO BE CAST BY OTHERS.
- UNSTRESS WILL NOT SUPPLY INSERTS OR MISCELLANEOUS HARDWARE CONTAINED IN CAST IN PLACE WORK UNLESS SPECIFICALLY NOTED.
- CUSTOMER WILL PROVIDE ADEQUATE CLEAR AREA TO AND WITHIN THE STRUCTURE FOR UNRESTRICTED OPERATION OF CRANES AND TRUCKS BY THE RECTOR.
- RECTOR WILL REMOVE AND PATCH LIFTING EYES PROVIDED FOR RESECTION.

DESIGN LOADINGS:

MATERIAL SPECIFICATIONS:

CONCRETE:	RELEASE: 36/30 PSI
U.W.T.:	28 DAYS: 5000 PSI
STRAND:	2" 270K P1-28.9
REBAR:	GRADE 40
HARDWARE:	AS SHOWN
FINISH:	SCREED
FINISH ENDS:	

NO.	DATE	REVISIONS

unistress

P.O. BOX 1145 PITTSFIELD, MASSACHUSETTS, 01201 (413) 499-1441

PRECAST STRUCTURAL CONCRETE — MEMBER PRESTRESSED CONCRETE INSTITUTE

STATE HIGHWAY GARAGE AT LYDDON, VERMONT

STATE OF VERMONT DIVISION OF BUILDINGS

HAHR CONSTRUCTION CONTRACTOR

DATE: 31 MAR 75

SCALE: 1/4" = 1'-0"

CHKD: BFM: Bc

JOB NO: 7504

DWG. NO: T-1

RECEIVED

STATE BUILDINGS

RECEIVED