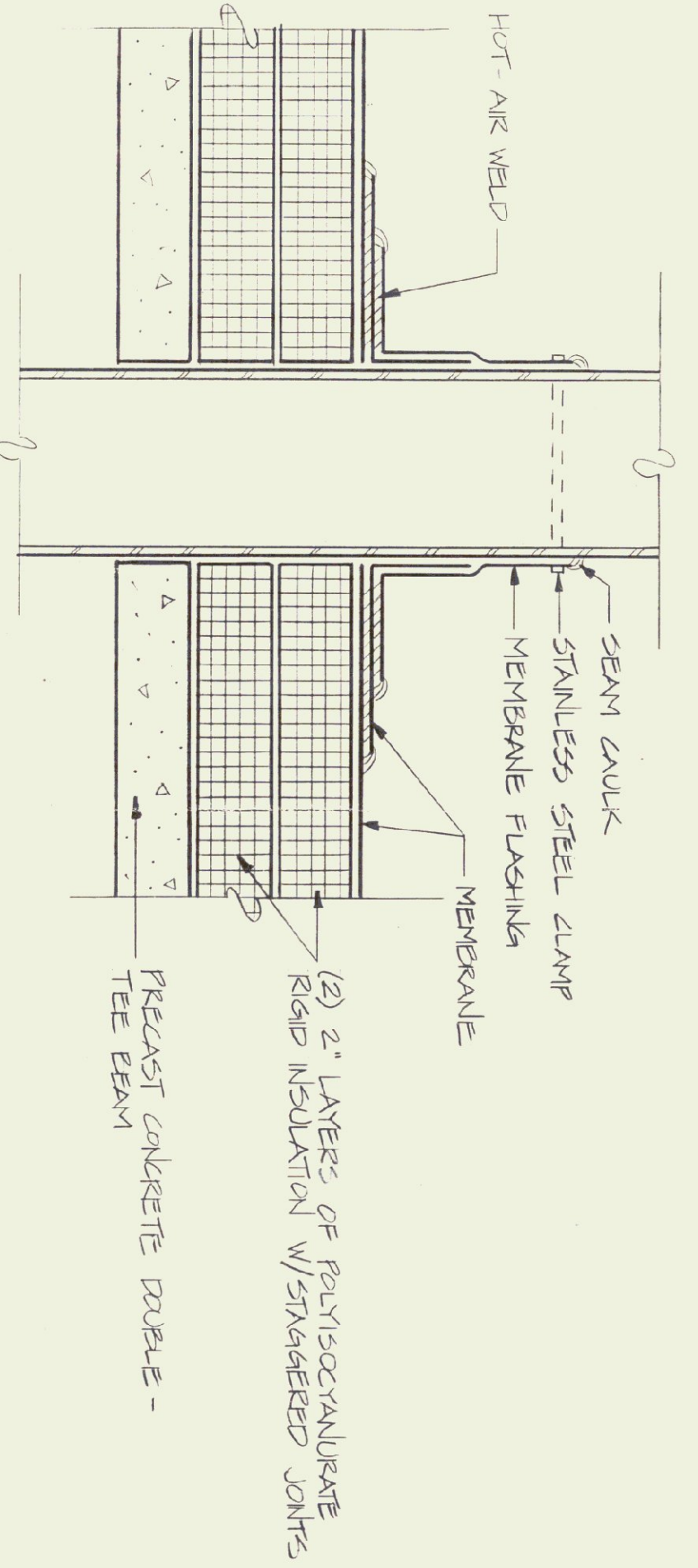
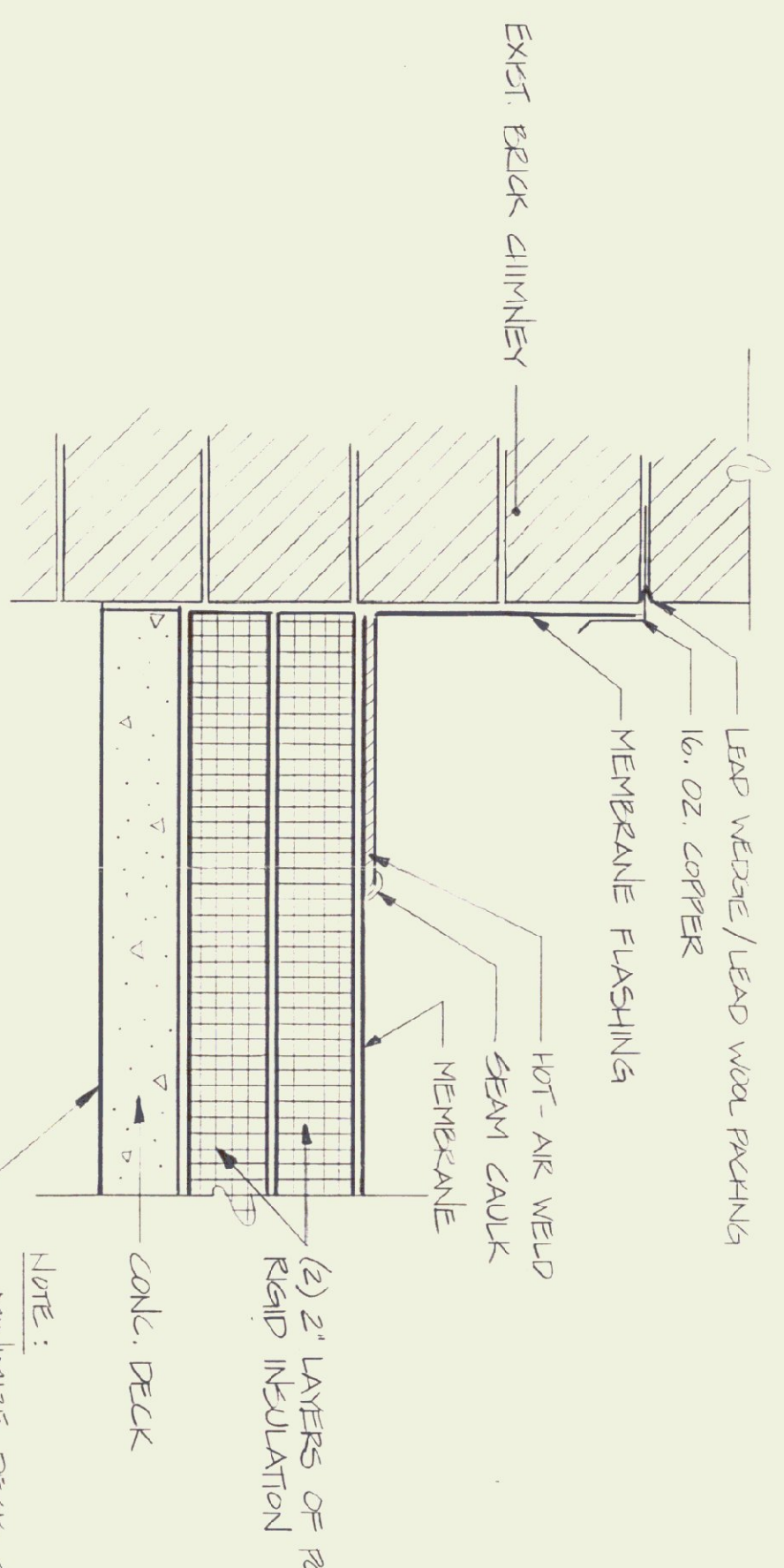


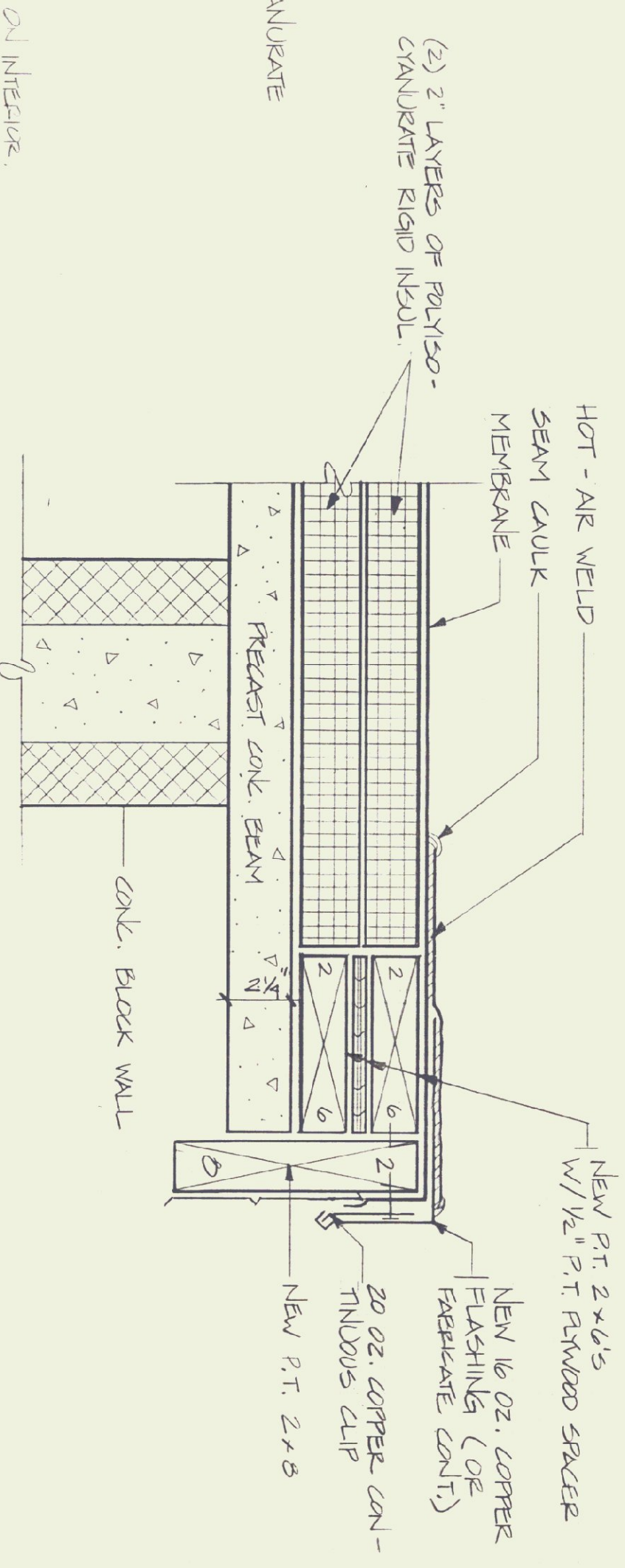
**ROOF PLAN**  
SCALE: 1/8" = 1'-0"



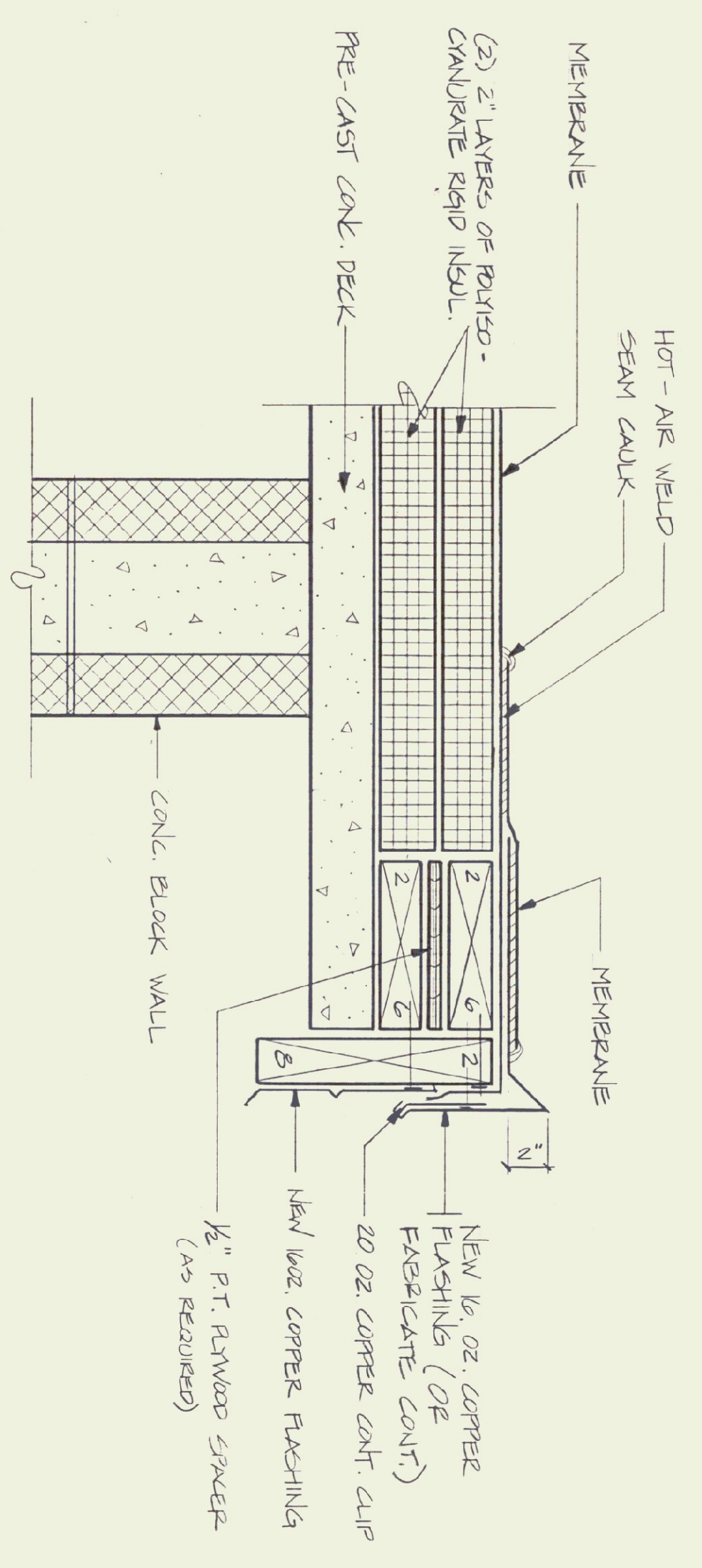
**VENT STACK DETAIL**  
SCALE: 3" = 1'-0"



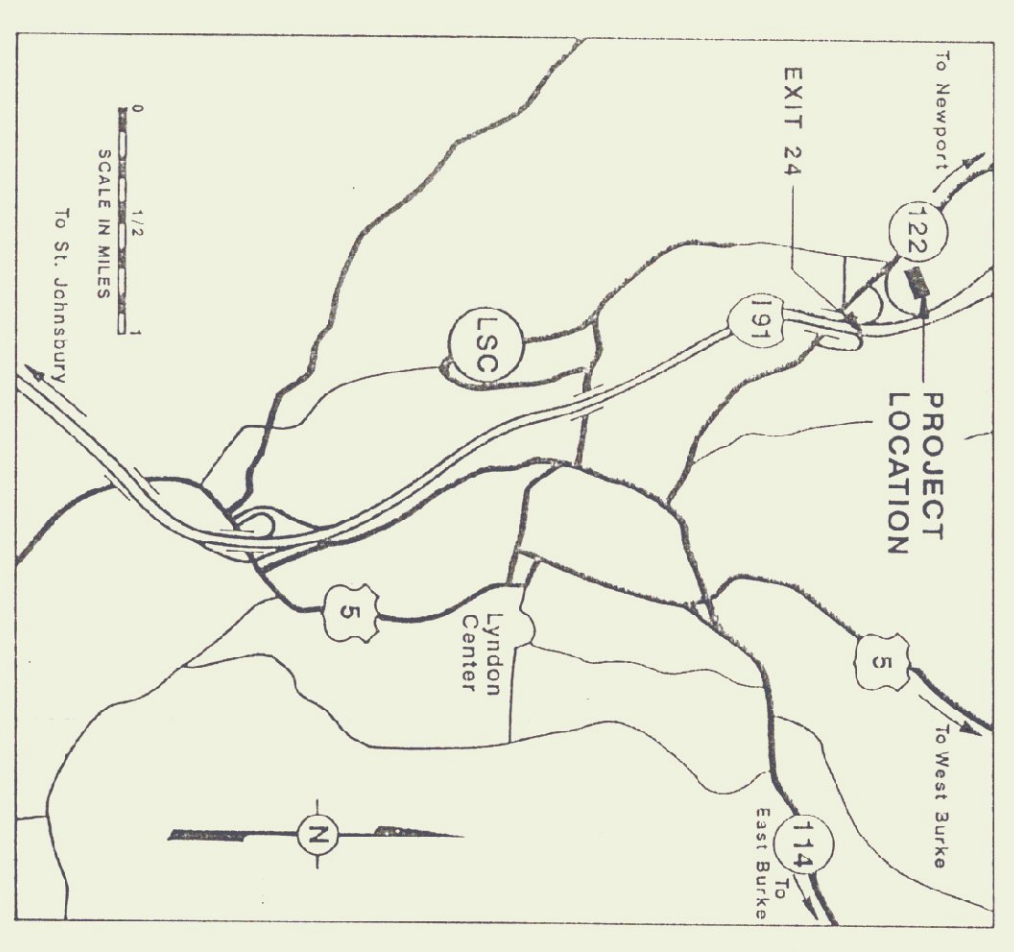
**CHIMNEY FLASHING DETAIL**  
SCALE: 3" = 1'-0"



**1 DRIP EDGE DETAIL**  
**2** SCALE: 3" = 1'-0"



**1 GRAVEL STOP DETAIL**  
SCALE: 3" = 1'-0"



**LOCATION MAP**

- NOTES:**
- 1) REMOVE EXISTING BUILT-UP ROOF- AND REPLACE W/ NON-BALLASTED SINGLE-PLY MEMBRANE ROOFING SYSTEM.
  - 2) VERIFY AND REPLACE ALL ROTTED WOOD NAILED OR FASIA.
  - 3) ALL COPPER FLASHING FASTEN W/ COPPER NAILS
  - 4) USE CONCRETE SPIRES TO FASTEN INSULATION & MEMBRANE

STATE OF VERMONT DEPARTMENT OF STATE BUILDINGS AGENCY OF ADMINISTRATION MONTPELIER, VERMONT		SCALE: 1/2" = 1'-0"		DWG NO. R-1	
AGENCY OF TRANSPORTATION LYNDON 5 - BAY GARAGE REEROOFING PROJECT		DATE: OCT. 1, 1970		REVISIONS: AS NOTED	
LYNDON, VERMONT		DRAWN BY: B. McAVOY		APPROVED BY: H. KATZ	