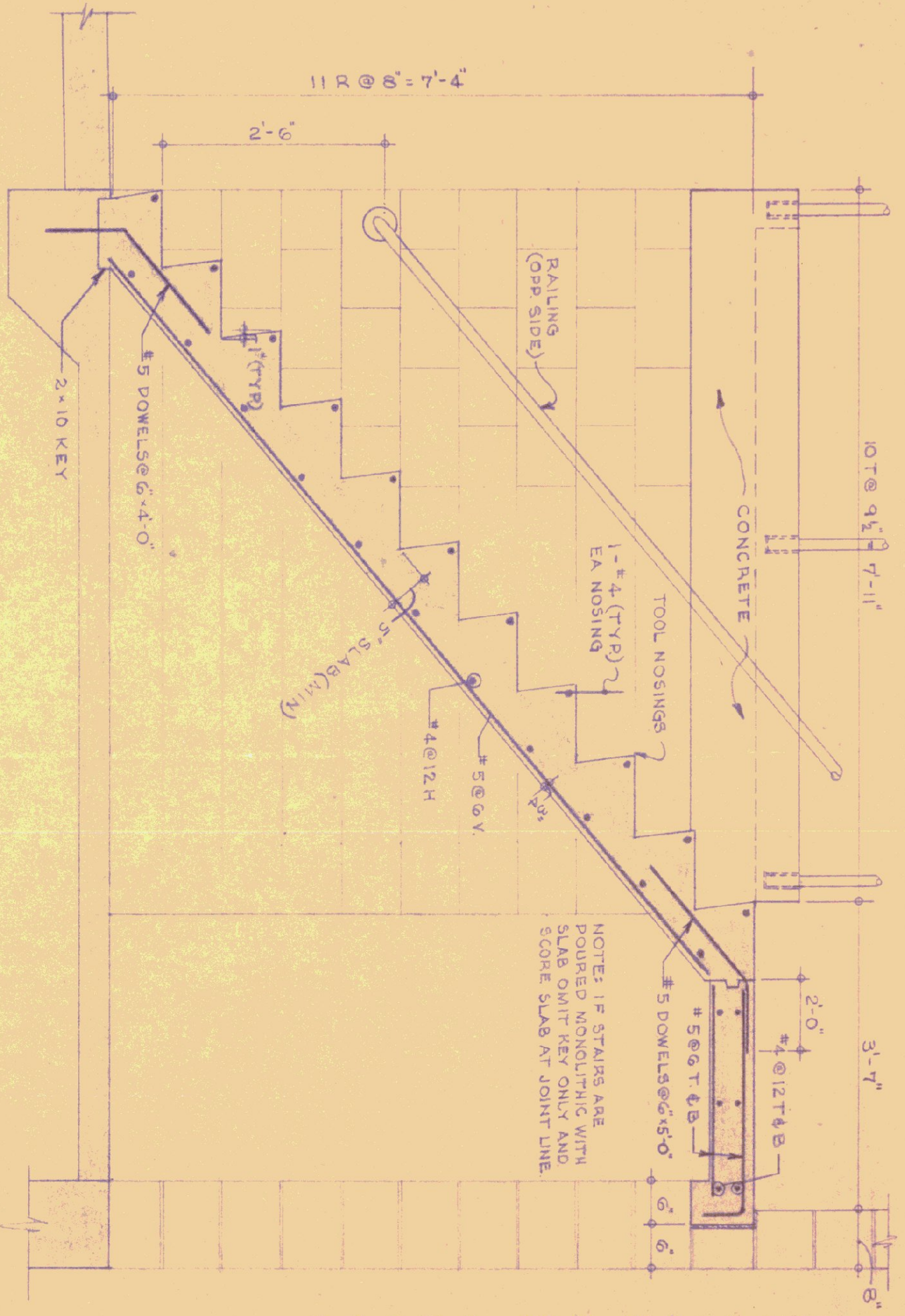
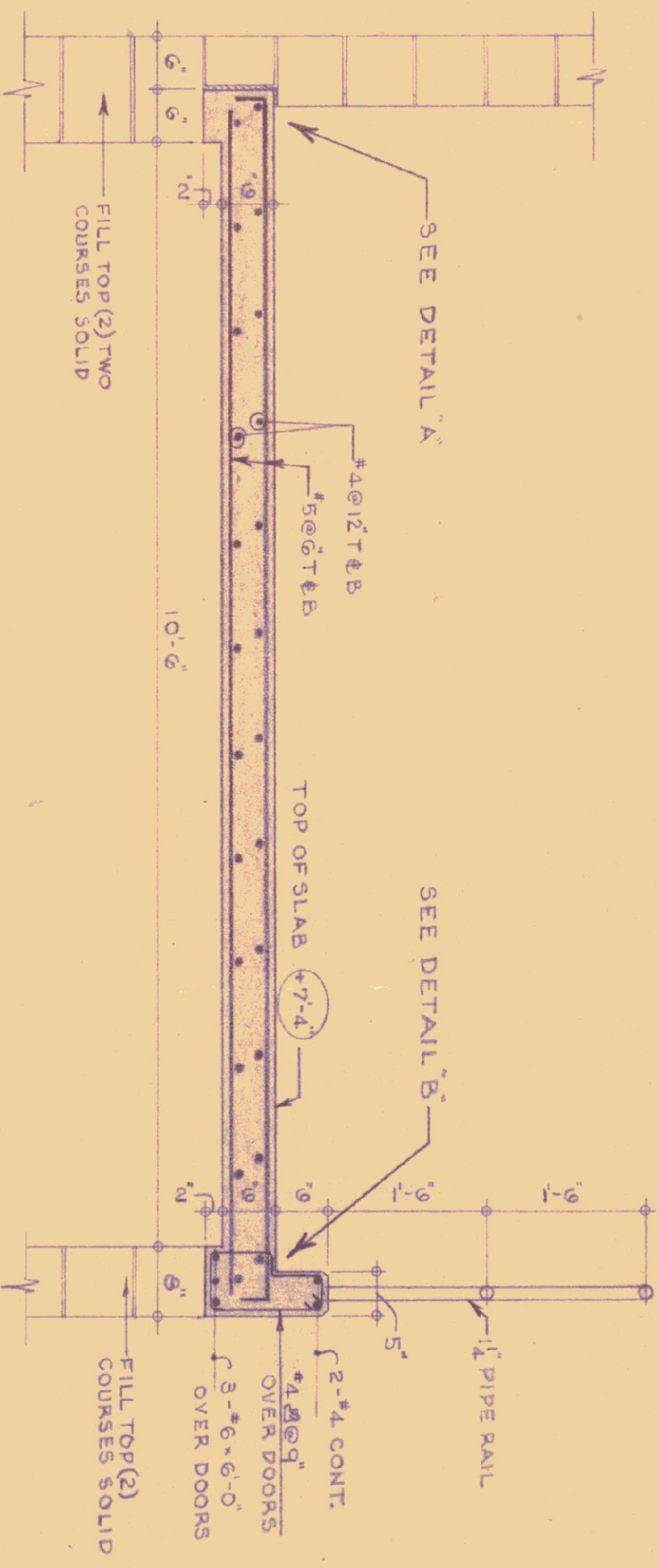


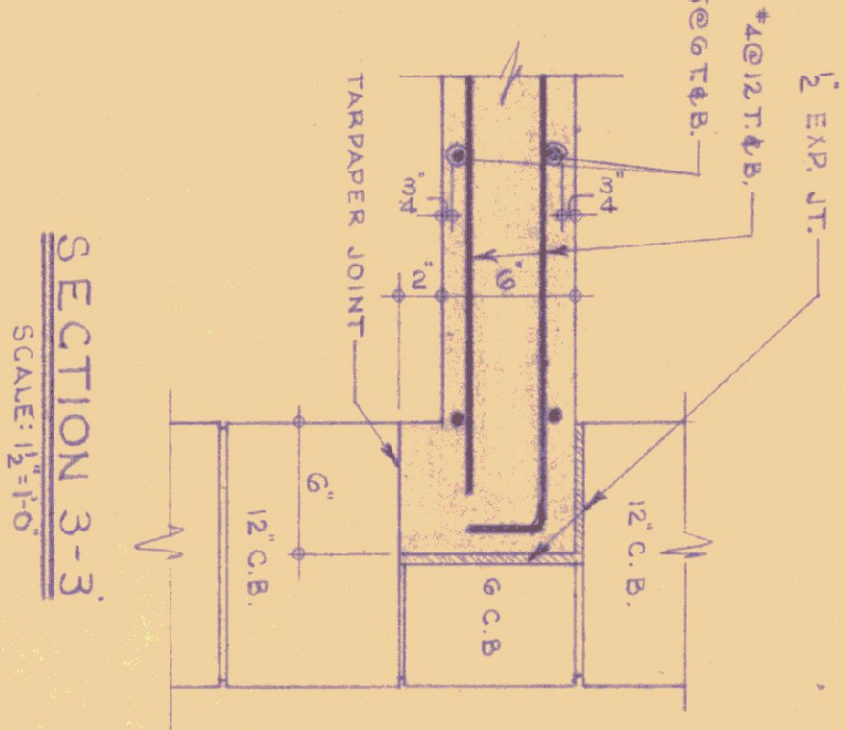
PLAN OF CONCRETE SLAB AT MEZZANINE
SCALE: 1/4"=1'-0"



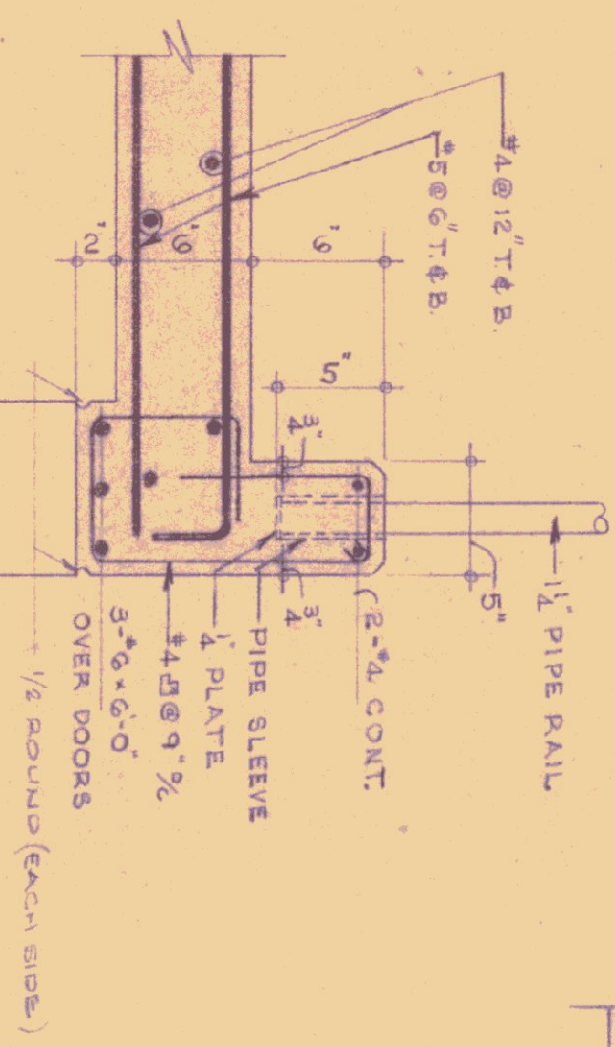
SECTION 2-2
SCALE: 1/2"=1'-0"



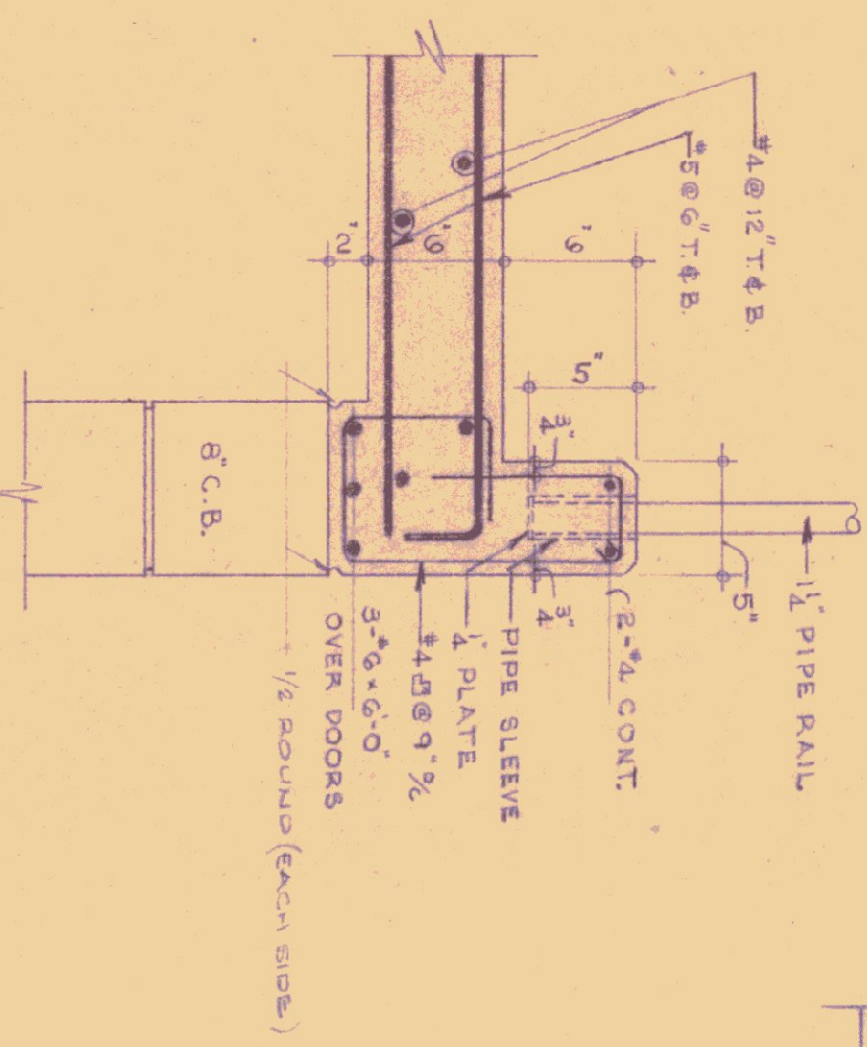
SECTION 1-1
SCALE: 1/2"=1'-0"



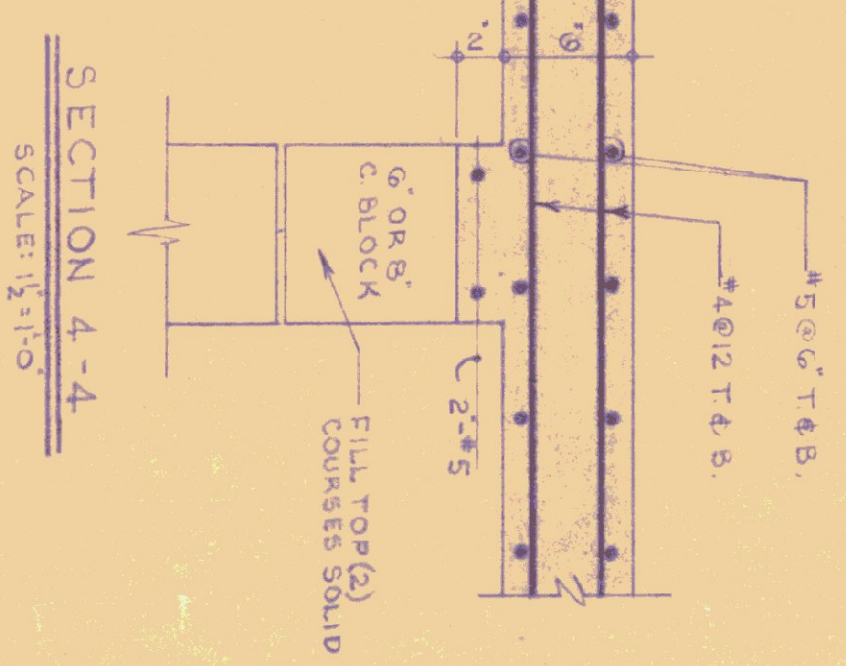
SECTION 3-3
SCALE: 1/2"=1'-0"



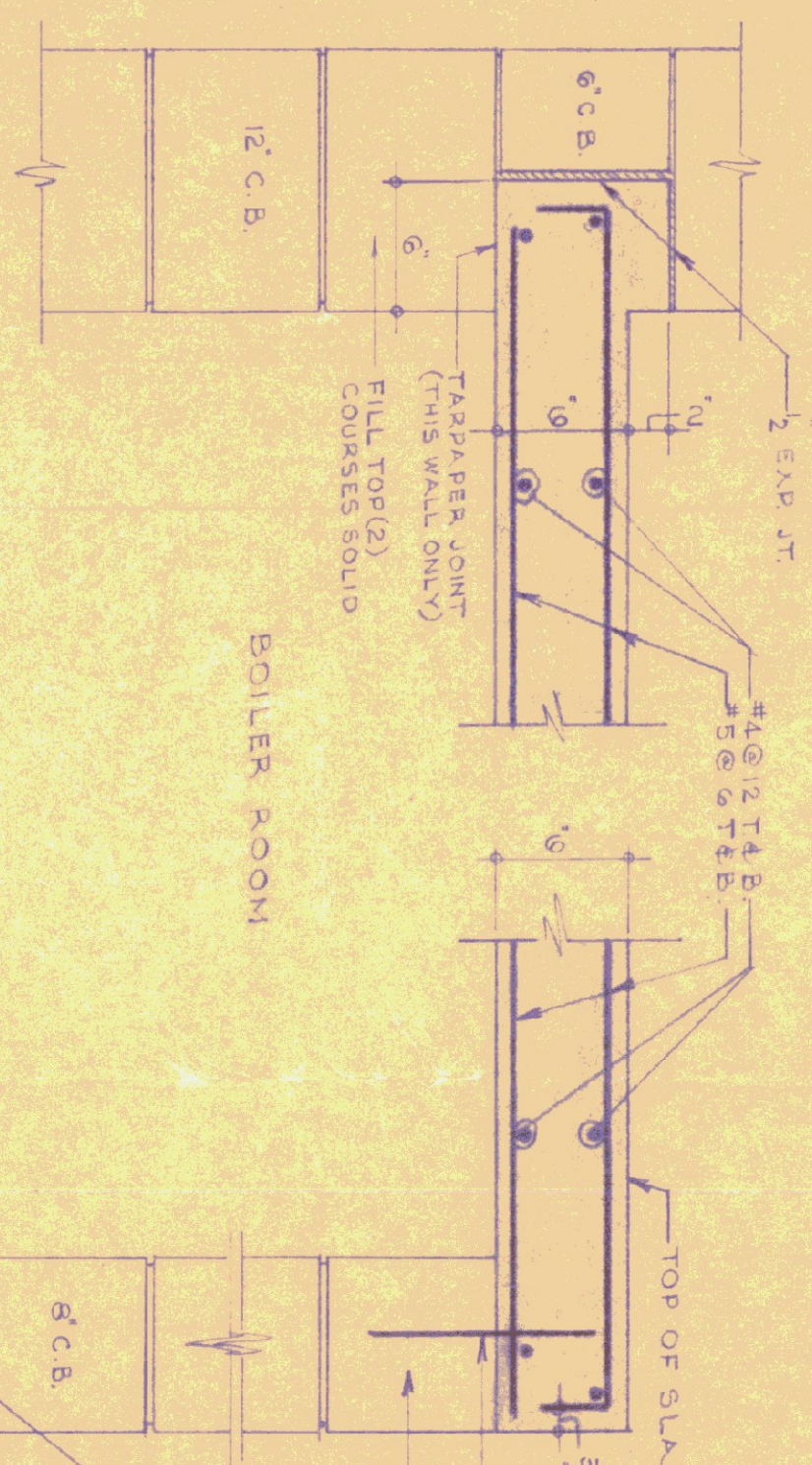
DETAIL A
SCALE: 1/2"=1'-0"



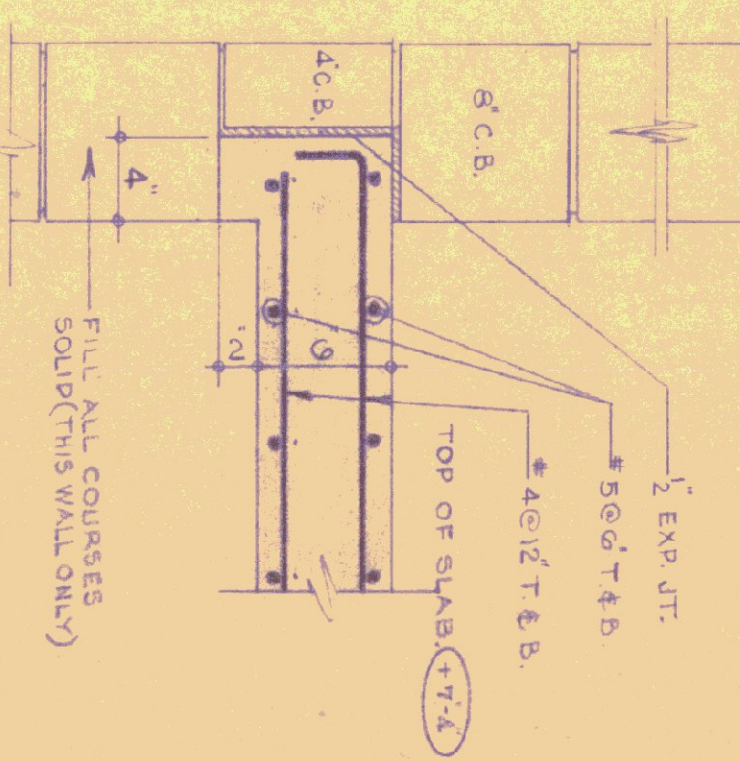
DETAIL B
SCALE: 1/2"=1'-0"



SECTION 4-4
SCALE: 1/2"=1'-0"



SECTION 5-5
SCALE: 1/2"=1'-0"



SECTION 6-6
SCALE: 1/2"=1'-0"

GENERAL NOTES

1. CONCRETE - 3000 PSI/28 DAYS, MAXIMUM SLUMP 4".
2. ALL EXPOSED CONCRETE TO BE RUBBED AND CURED.
3. ALL EXPOSED SLABS & CONCRETE STEPS TO BE COVERED & PROTECTED FOR DURATION OF JOB UNTIL ACCEPTANCE.
4. CHAMFERED 1/2" CORNERS TO BE 5/16" DIA.
5. ALL SLAB SLOPING TO BE IN PLACE MIN (3) DAYS @ 70°F RE-SHORE AFTER STRIPPING - 14 DAYS.
6. PROTECT MASONRY FROM CONCRETE - SETTING MATERIAL. TO BE LAPPED 40 DPM.
7. ALL RE-STEEL TO BE PLACED ON SLAB BOLSTERS & HIT-CHAMBS. LEGS TO BE PVC PLASTIC.
8. ELECTRICAL CONDUIT TO BE LAYED ABOVE BOTTOM OF FACE STEEL. EACH SIDE OF PIPE RAILING POSTS TO BE LEADED INTO SLEEVES.
9. ALL CONCRETE SLABS SHALL BE SMOOT TROWELED.
10. CONCRETE STRAIN TENDS SHALL HAVE INTERNAL APPROXIMATE HANDSPR

REVISIONS	DATE	REVISION

STATE OF VERMONT
DIVISION OF STATE BUILDINGS
AGENCY OF ADMINISTRATION
MONTPELIER, VERMONT

Standard Highway Garage Building
DETAILS OF MEZZANINE, BOILER
ROOM SLABS AND CONC. STAIRWAY
SCALE: As noted

DATE: 10-18-74	DESIGNED BY:	DWG. NO. A 4
DRAWN BY: [Signature]	APPROVED BY: [Signature]	OF
STUDIO REVIEWING		