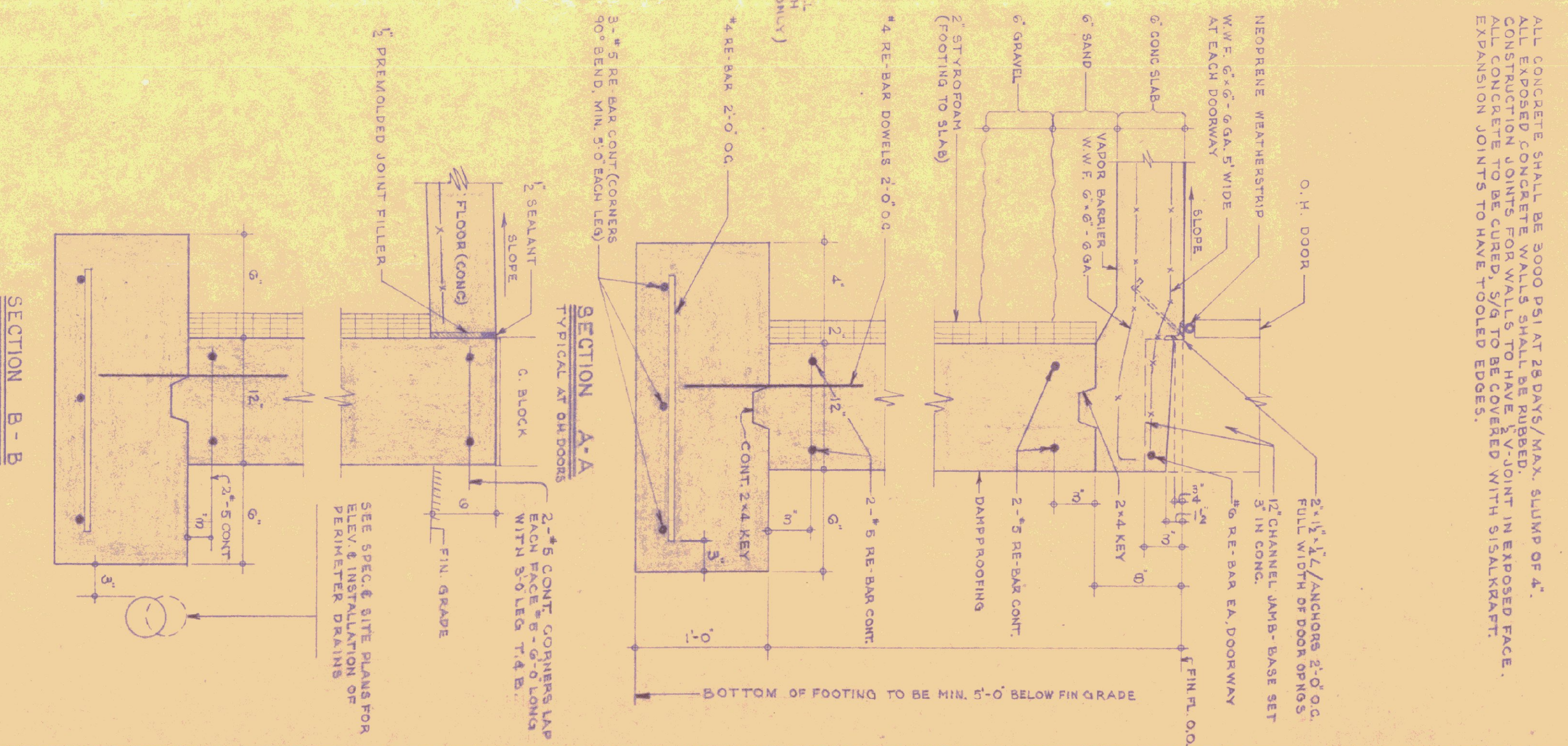
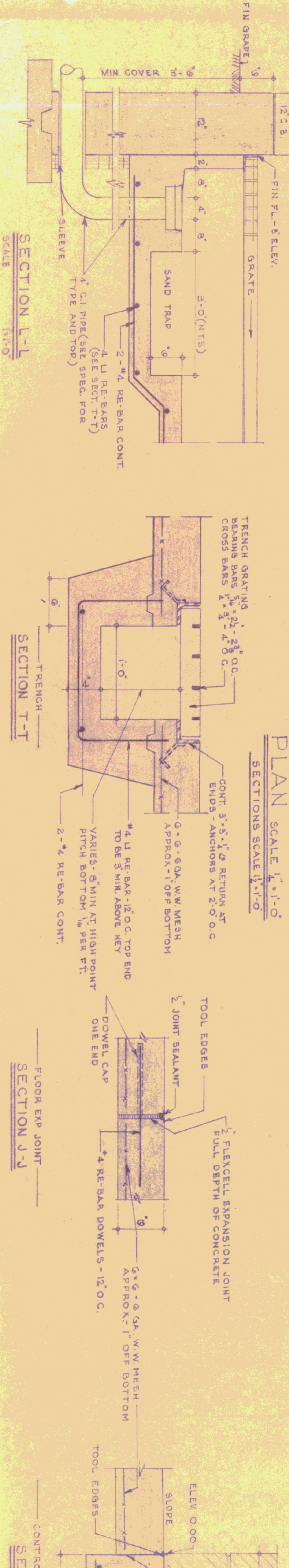
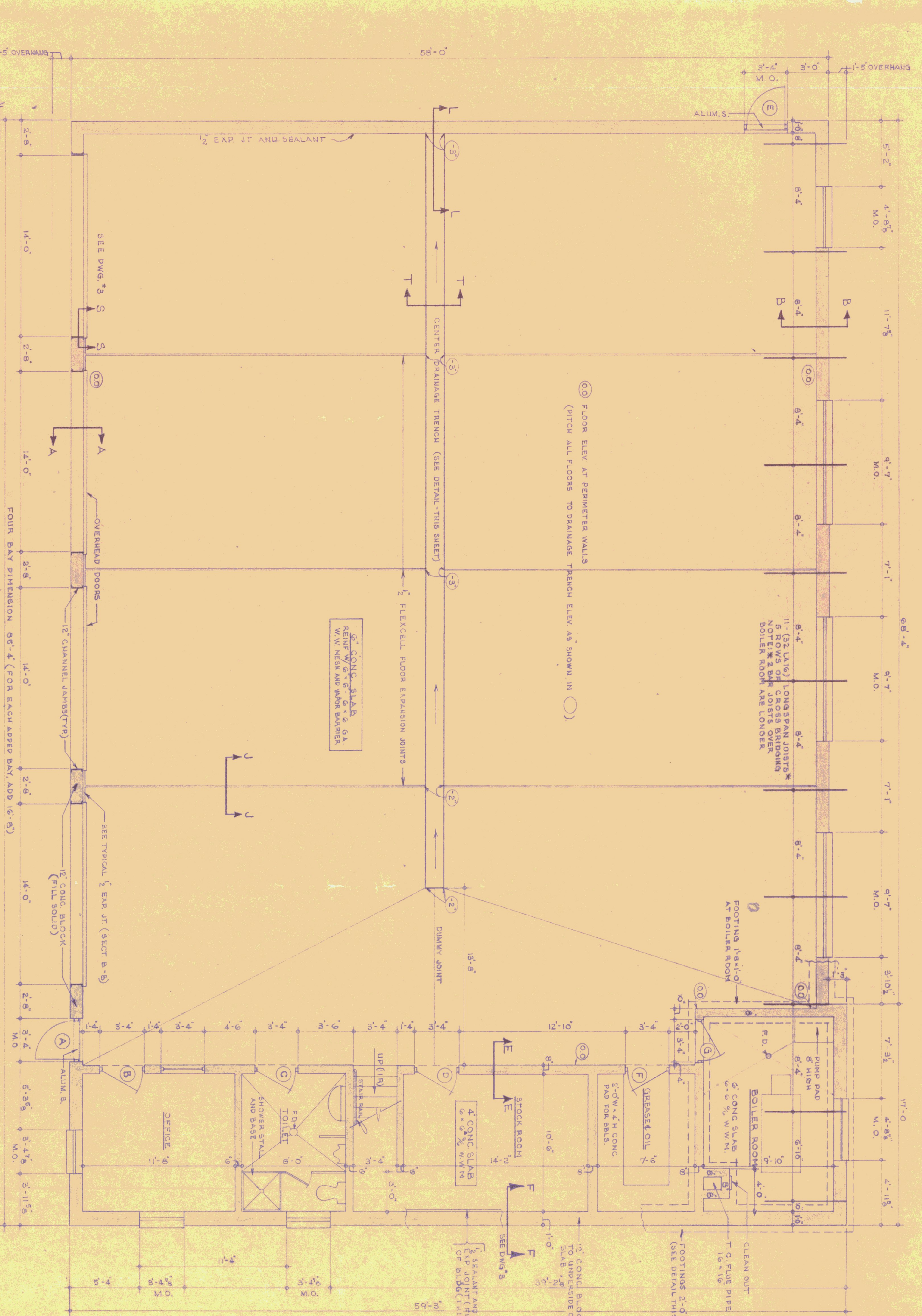


**GENERAL NOTES**

ALL CONCRETE SHALL BE 3000 PSI AT 28 DAYS/MAX. SLUMP OF 4".  
 ALL EXPOSED CONCRETE WALLS SHALL BE RUBBED.  
 ALL CONCRETE TO BE CURED 7 DAYS.  
 ALL JOINTS TO BE COVERED WITH SILKNET.  
 EXPANSION JOINTS TO HAVE TOoled EDGES.



TYPICAL FOUNDATION FOR ALL SIDES OF EXTERIOR ELEVATIONS (SEE ABOVE FOR OTHER INFORMATION)

REVISIONS	DATE	REVISION

STATE OF VERMONT  
 DIVISION OF STATE BUILDINGS  
 AGENCY OF ADMINISTRATION  
 MONTPELIER, VERMONT

Standard Four Bay Highway Garage Bldg.  
 FLOOR PLAN & FOUNDATION DETAILS

SCALE: As noted

DATE	DESIGNED BY:	DWG. NO.
10/18/74		AI
DRAWN BY:	APPROVED BY:	
STUDIO SEVEN INC.		