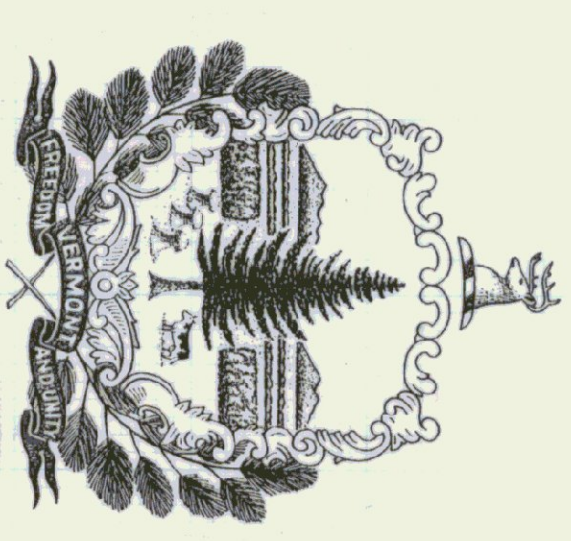


STATE OF VERMONT  
AGENCY OF TRANSPORTATION  
**SALT & SAND SHEDS**  
LUNENBURG, VERMONT

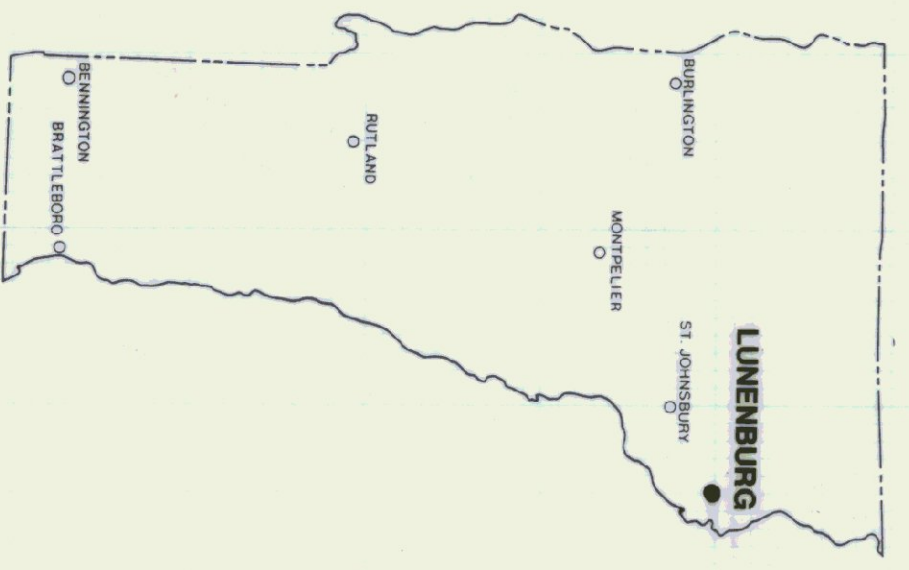
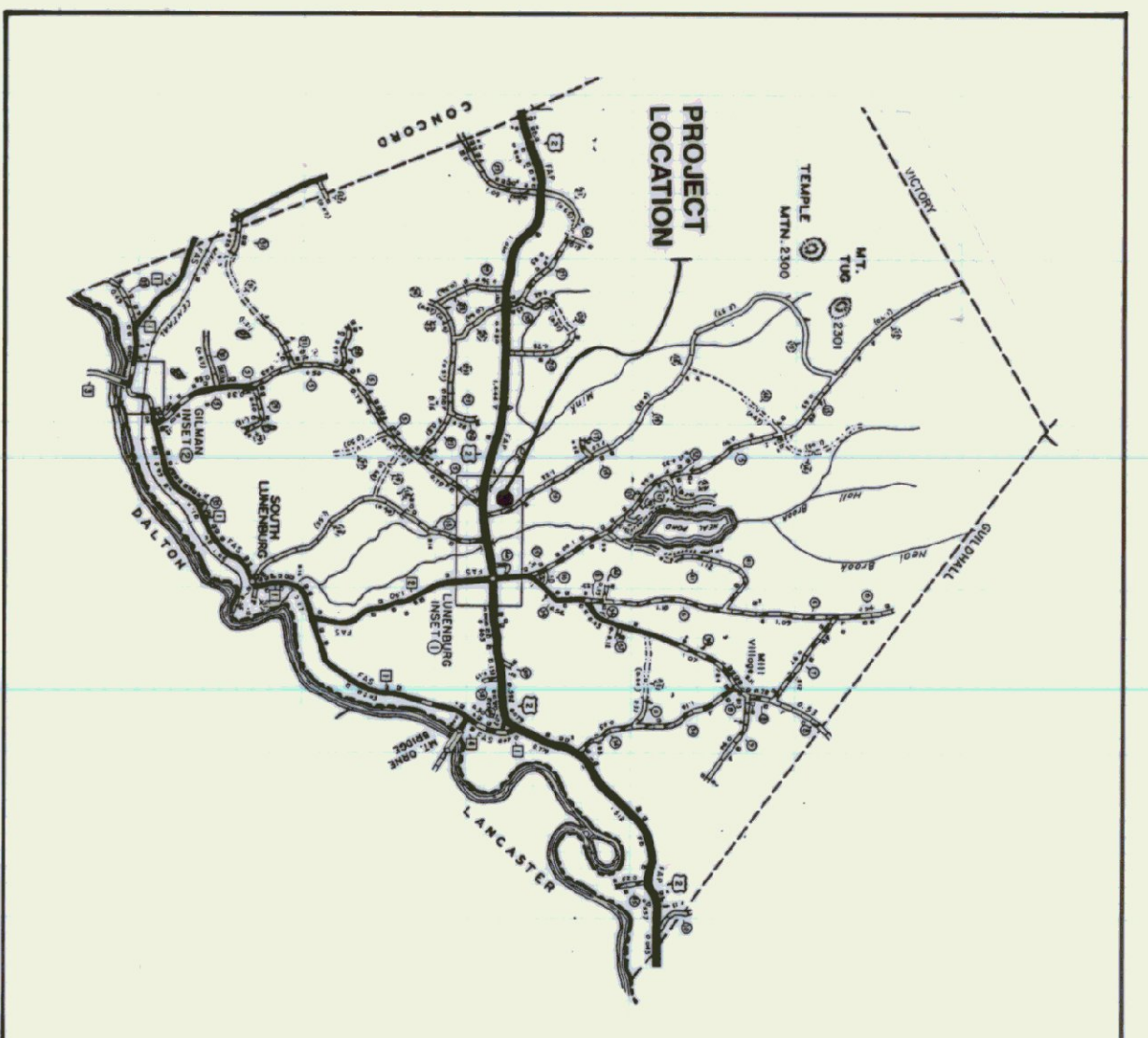
JUNE 11, 1993

AGENCY OF ADMINISTRATION  
DEPARTMENT OF STATE BUILDINGS  
2 GOVERNOR AIKEN AVENUE  
MONTPELIER, VERMONT 05602  
JOHN J. ZAMPIERI, COMMISSIONER

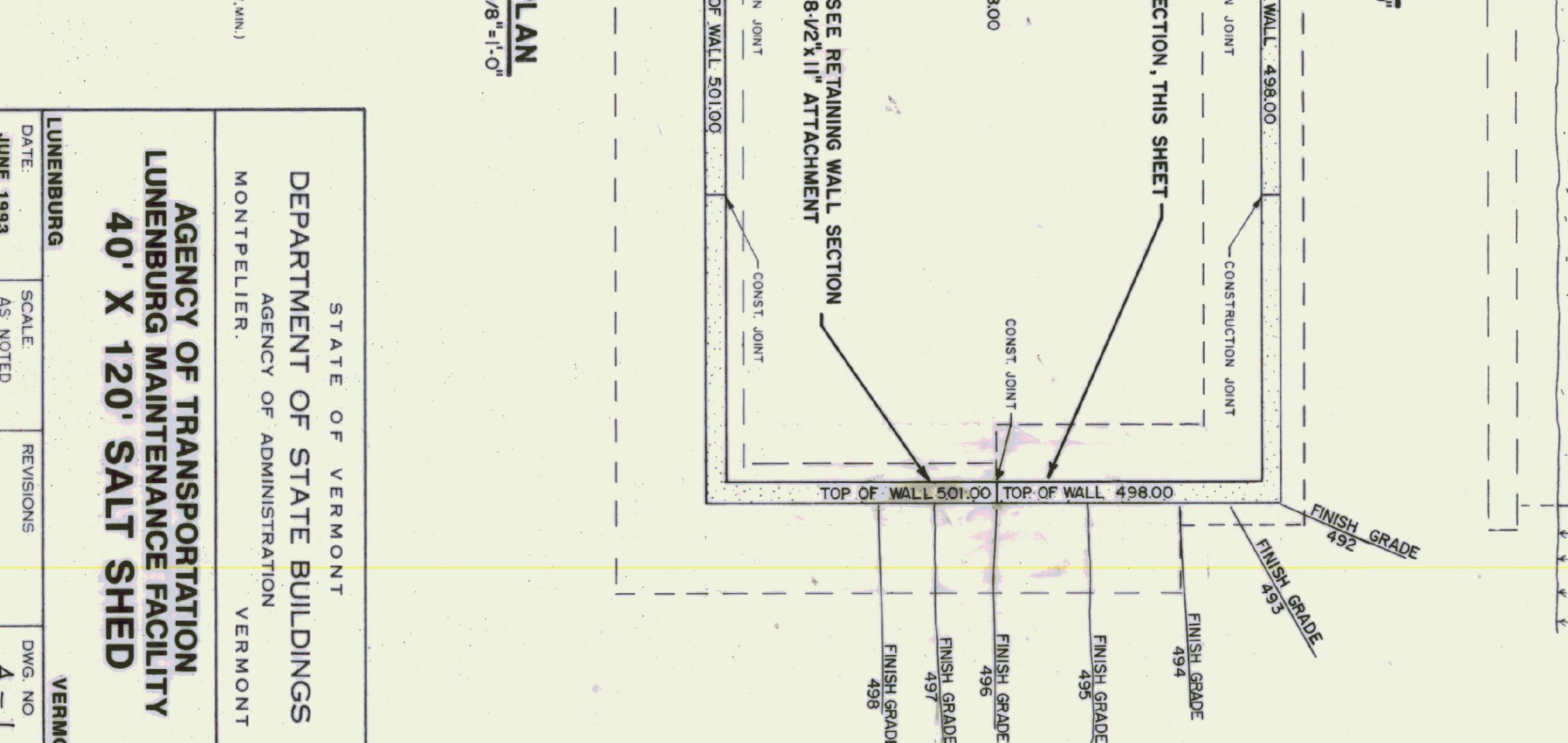
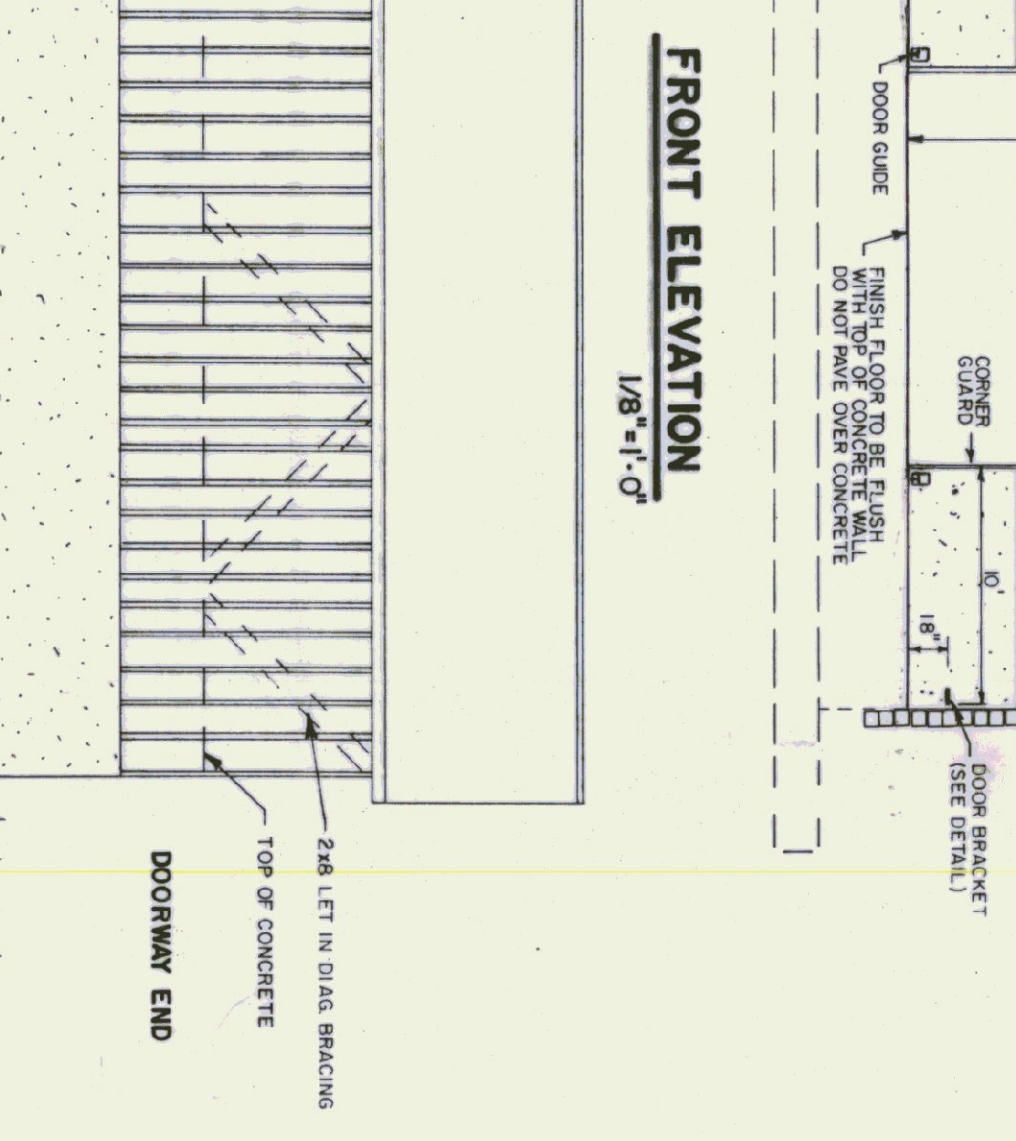
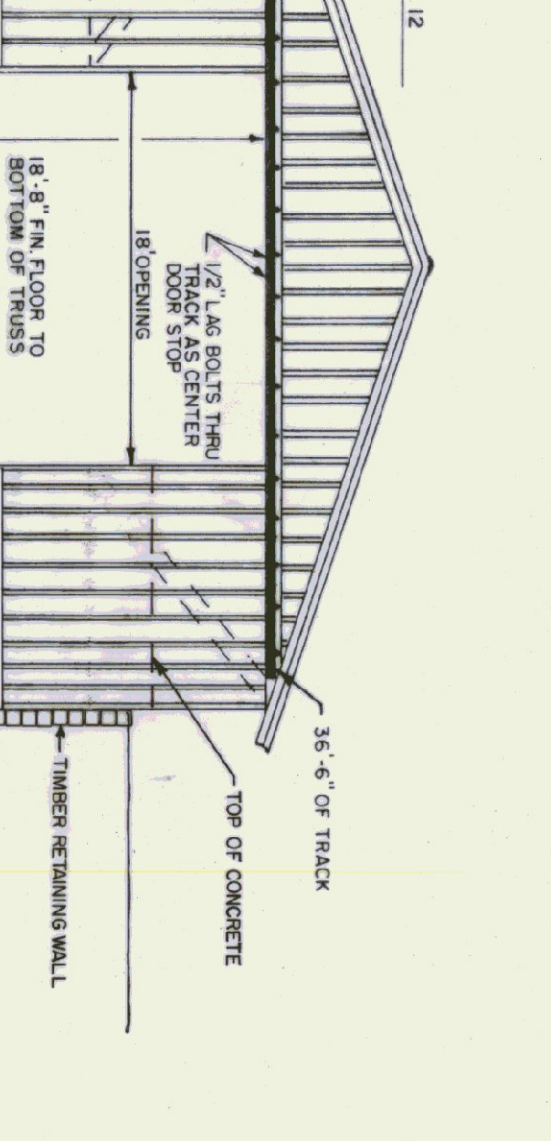
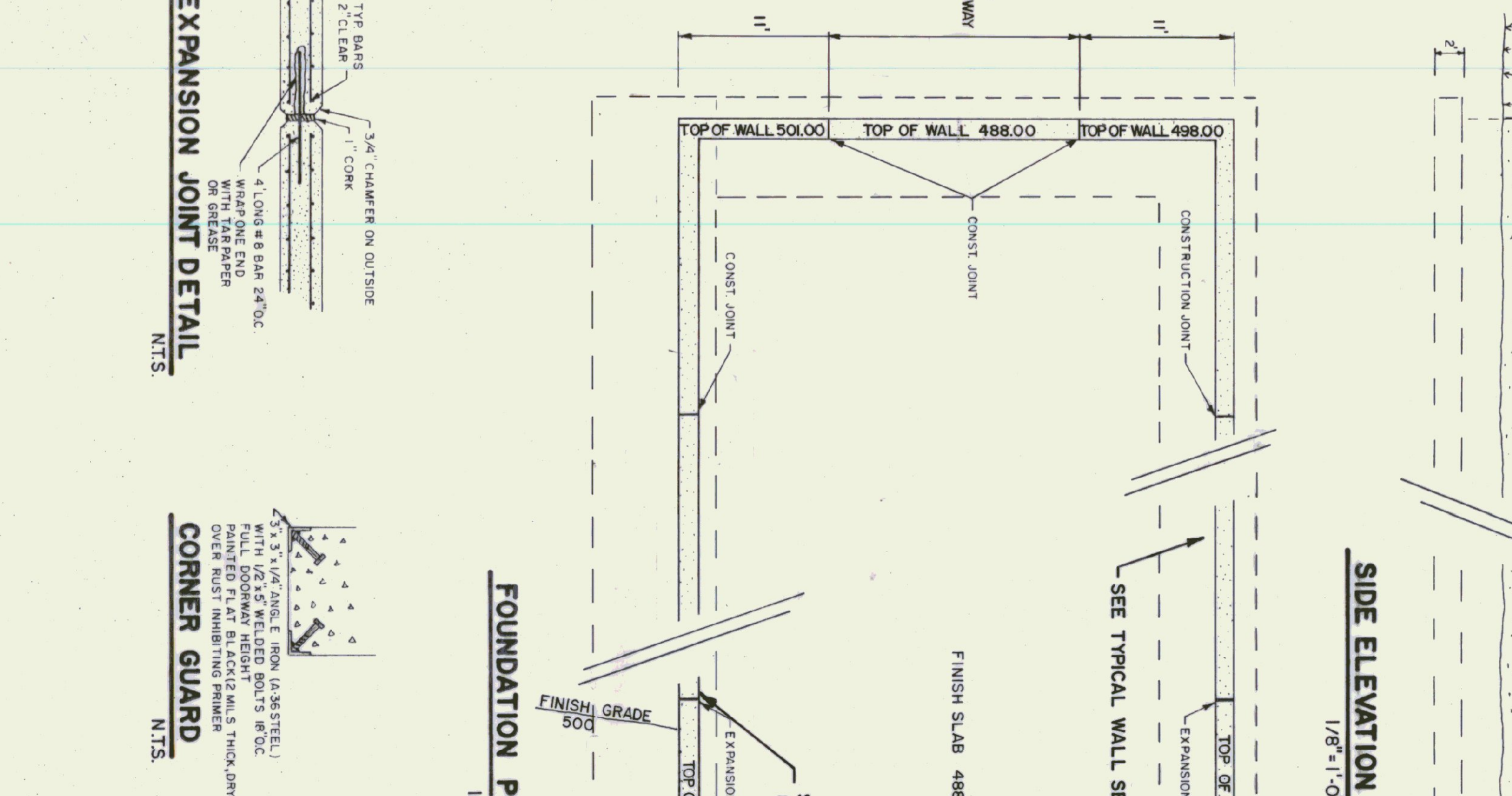
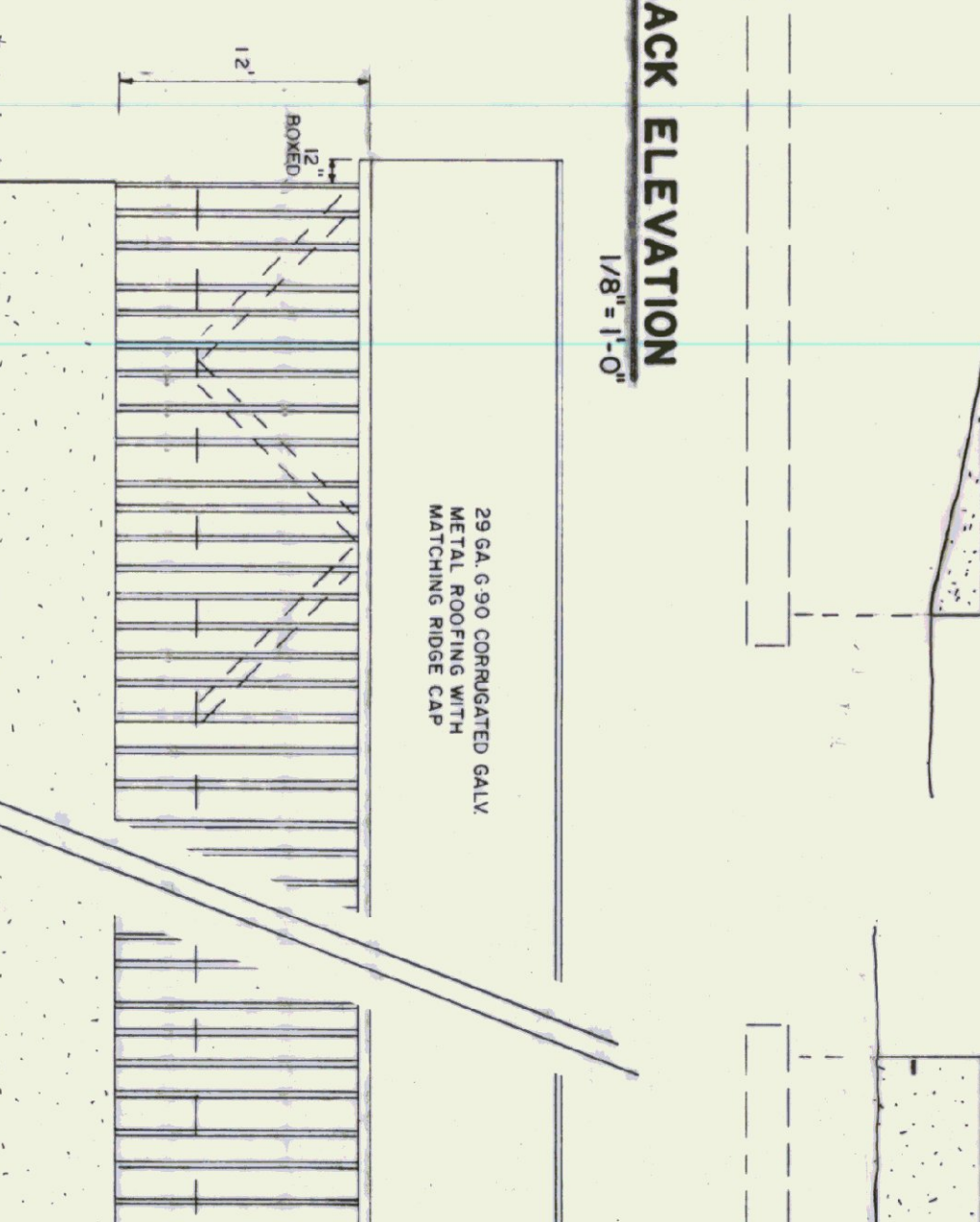
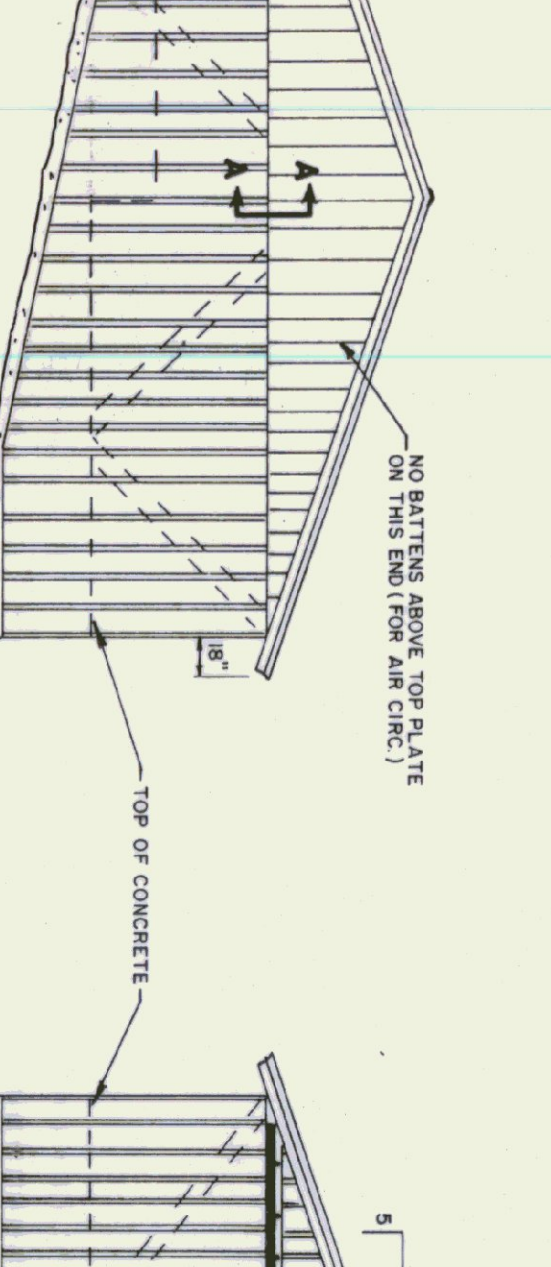
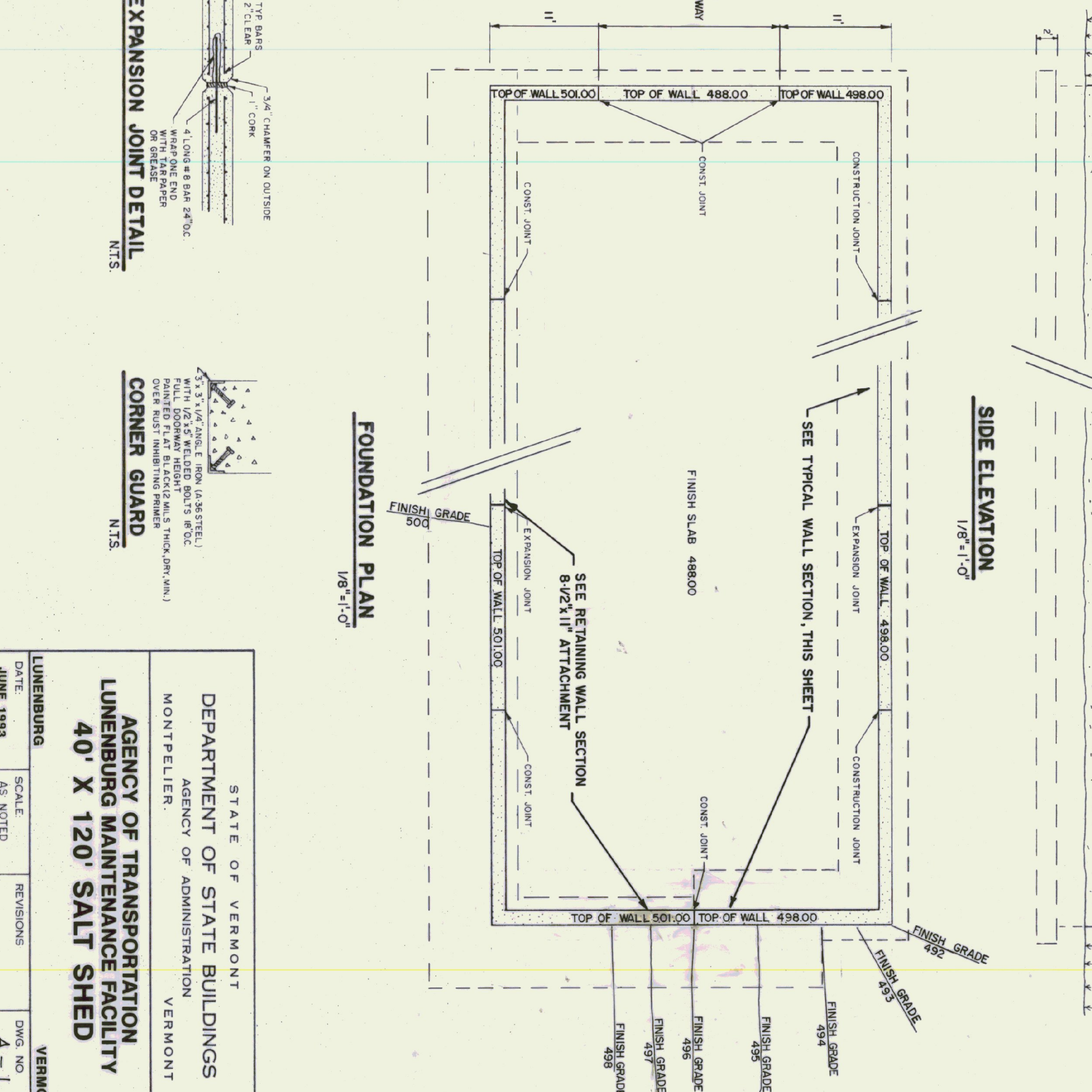
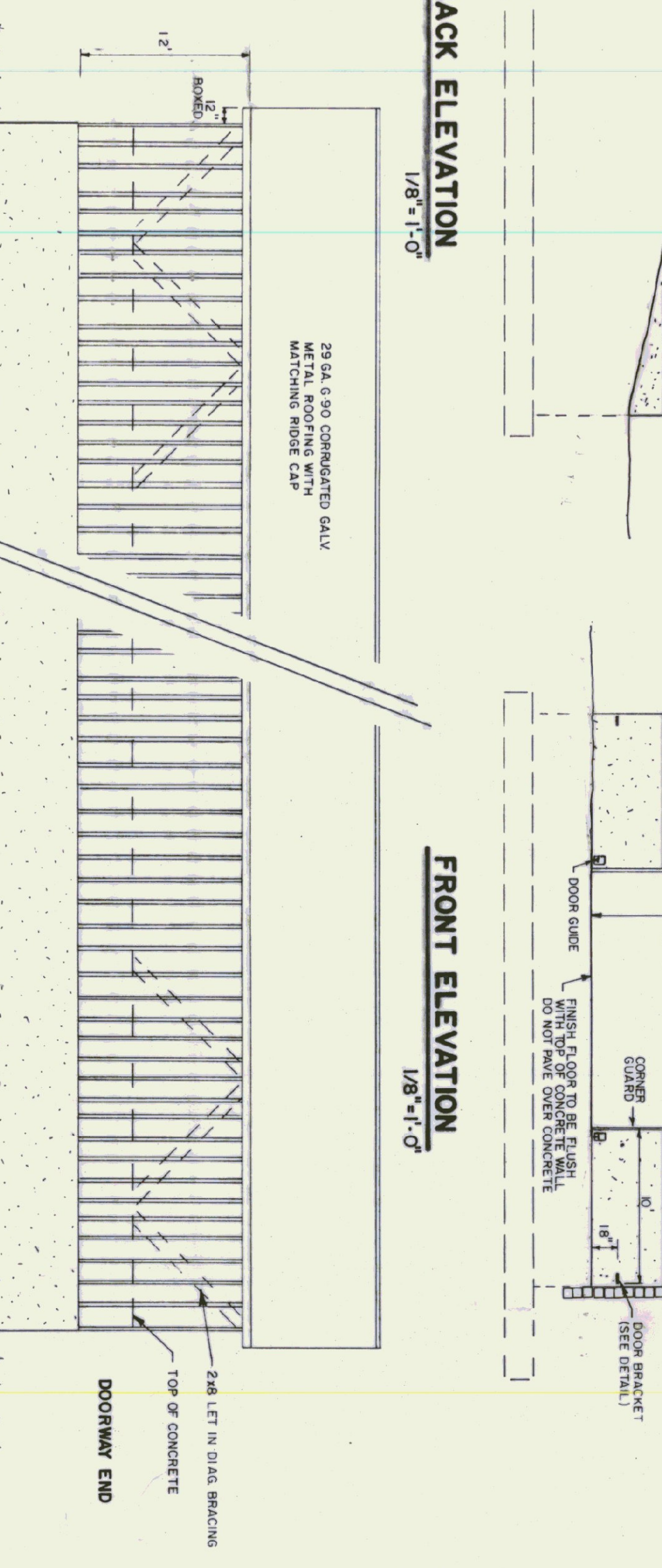
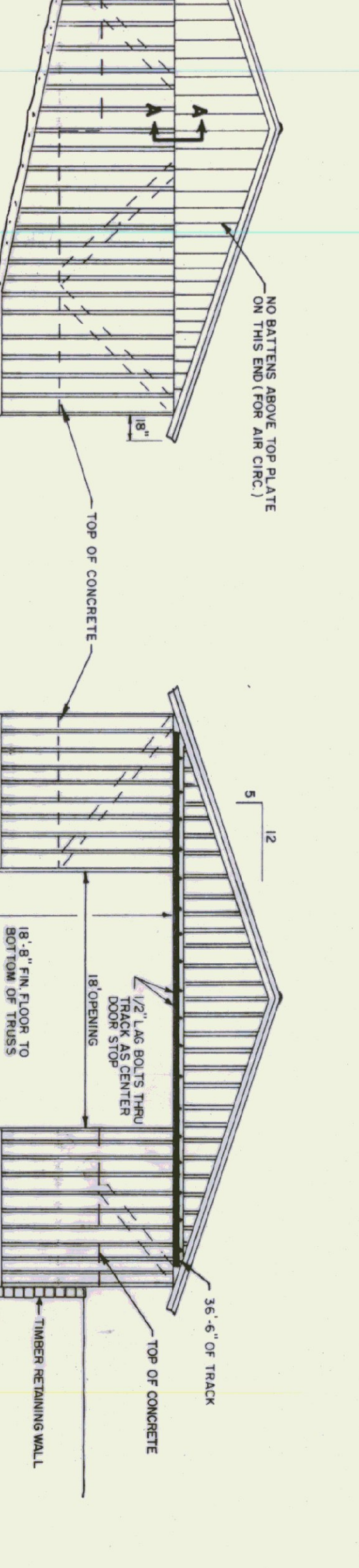
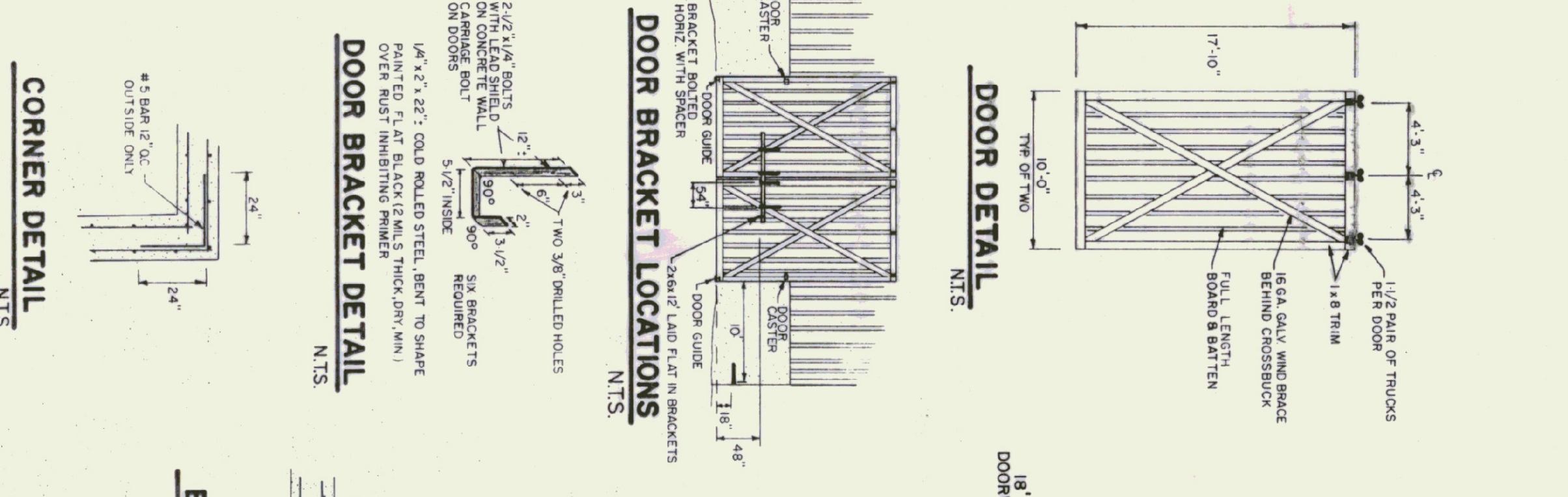
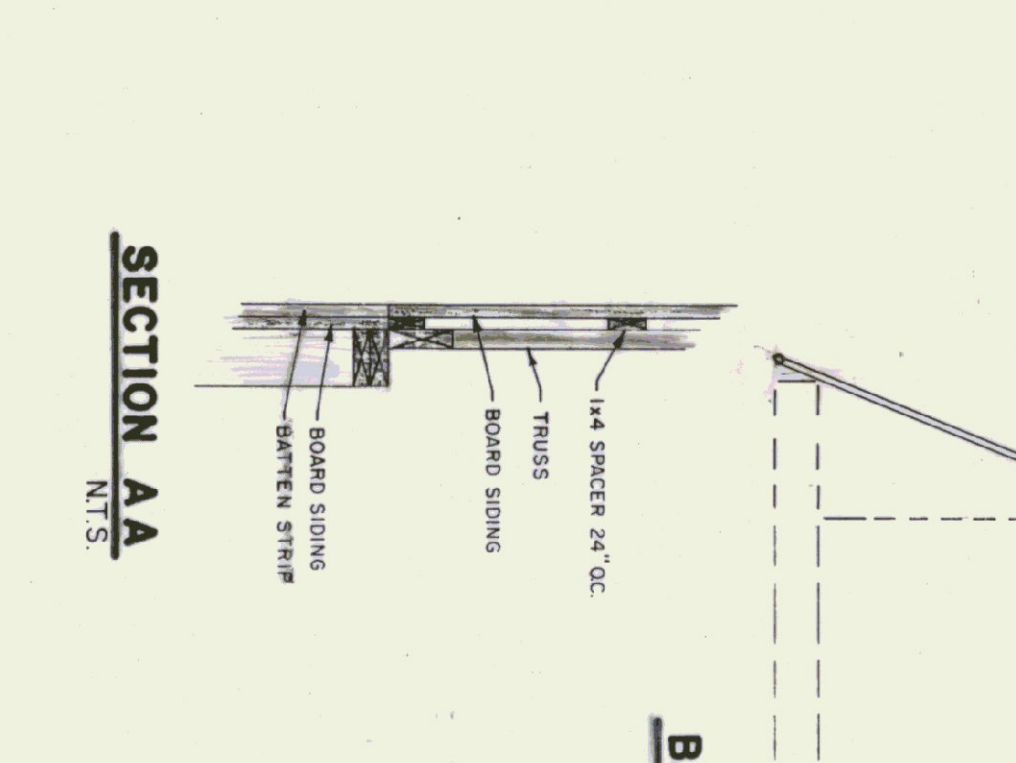
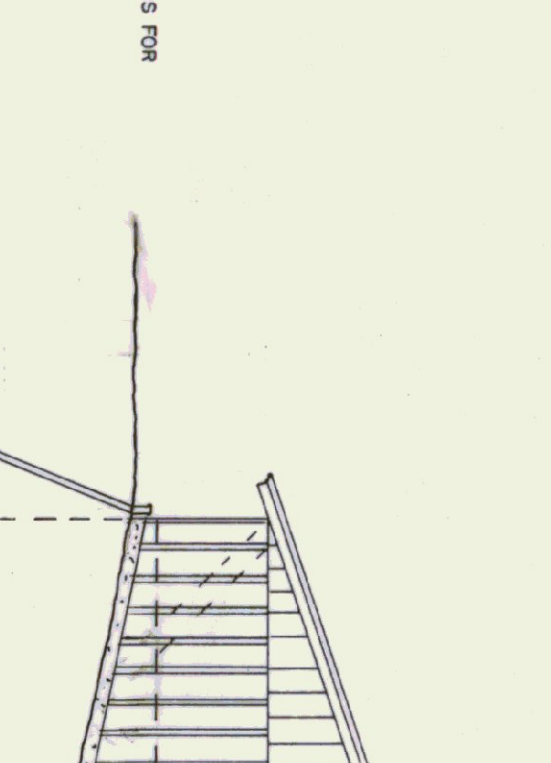
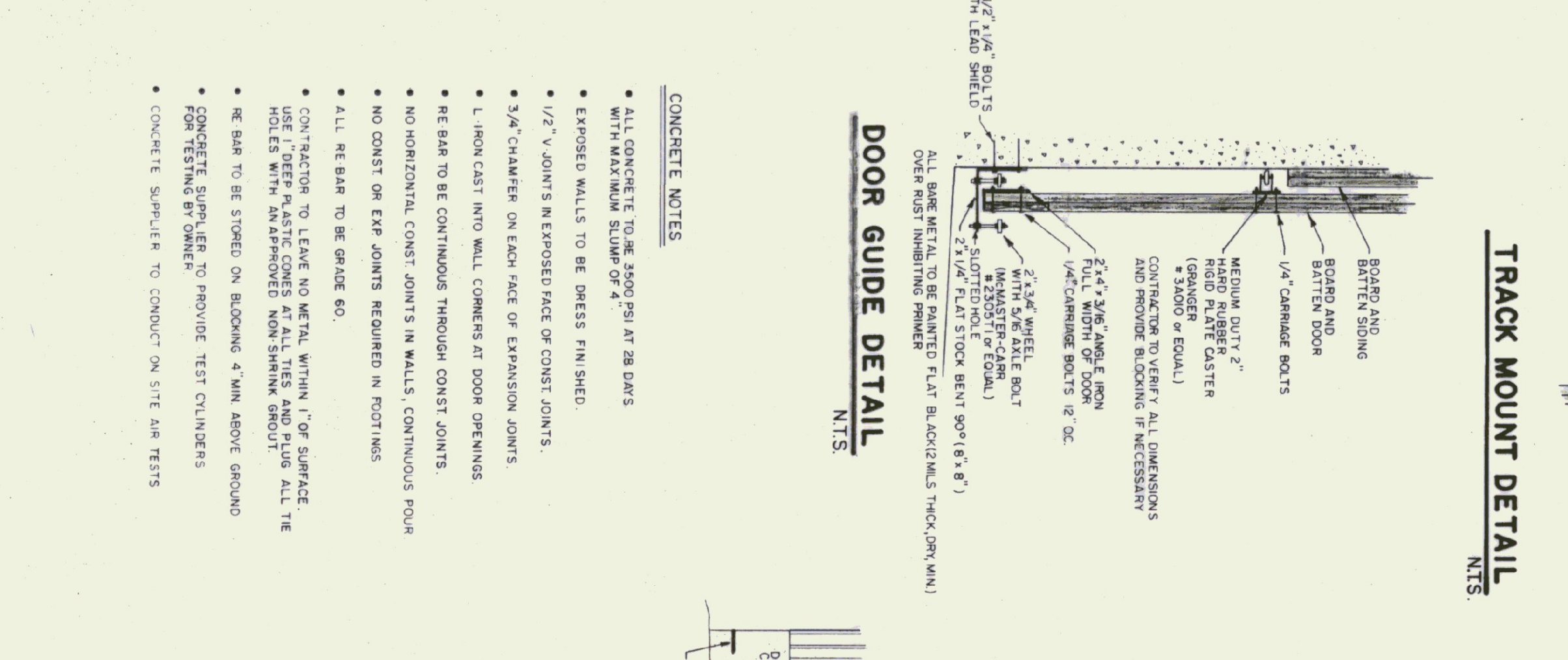
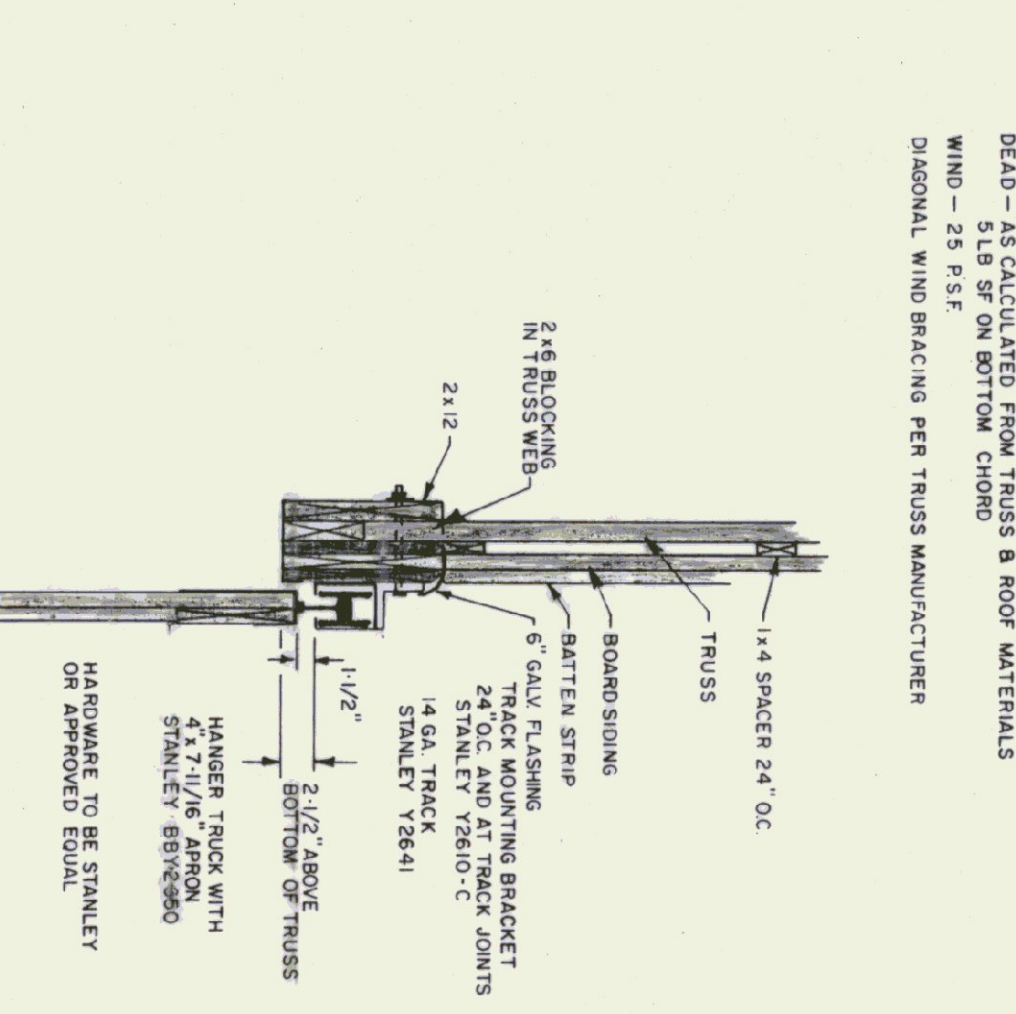
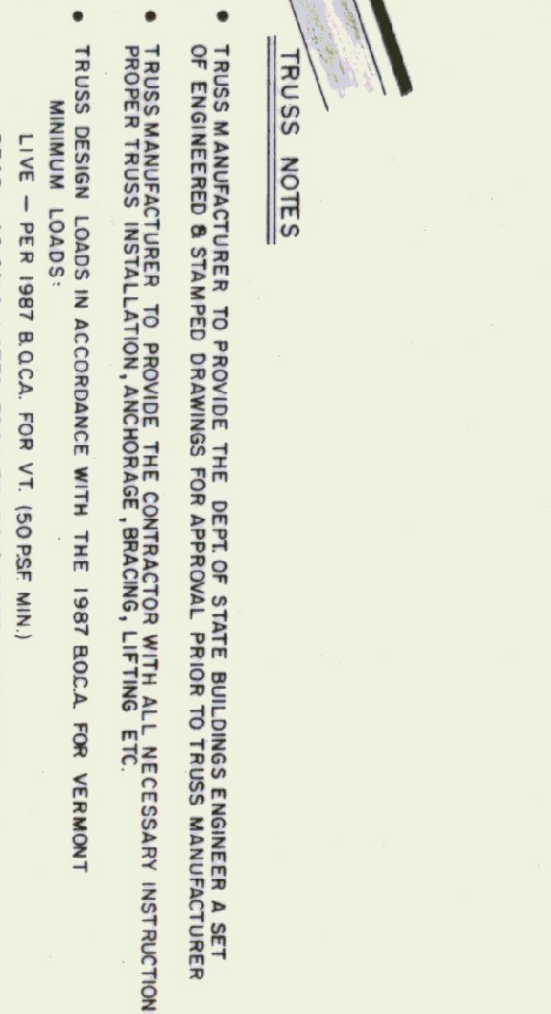
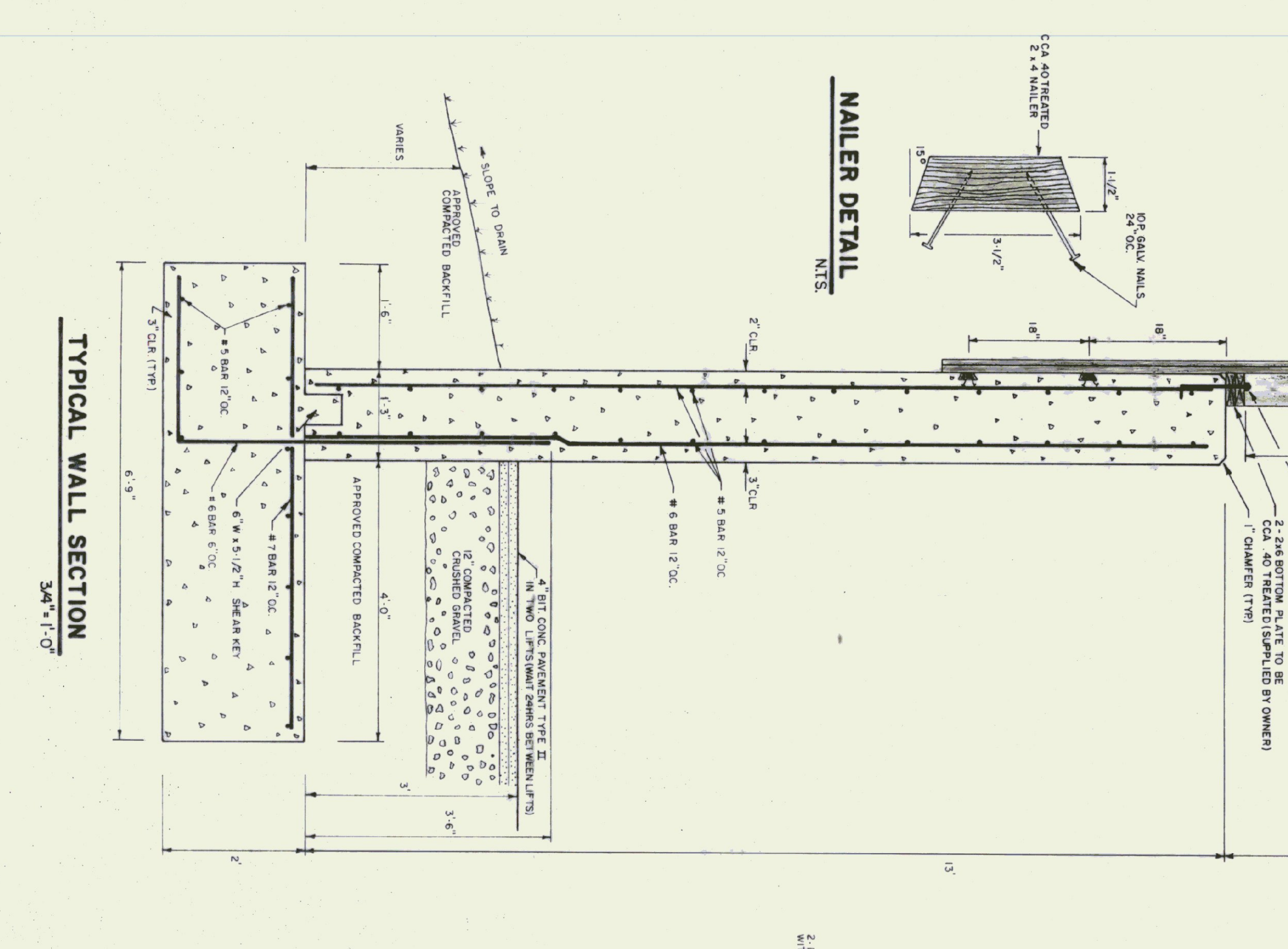
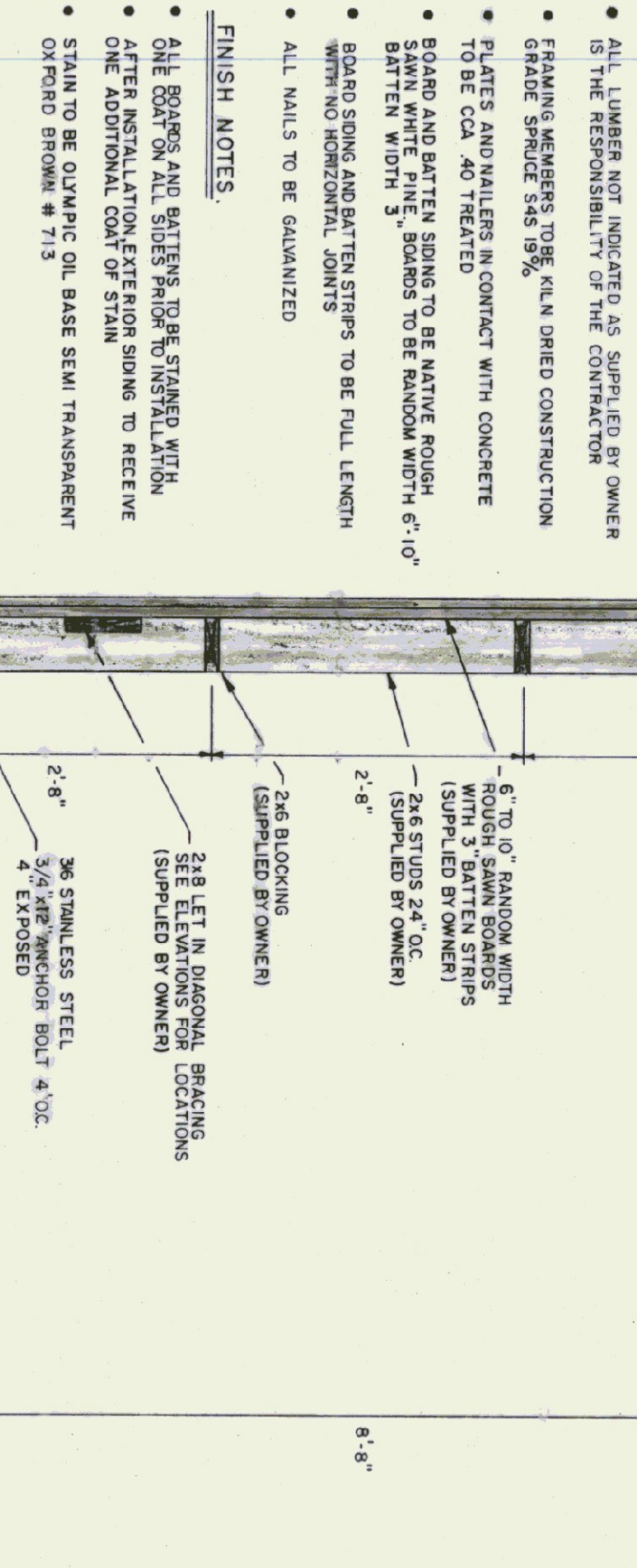
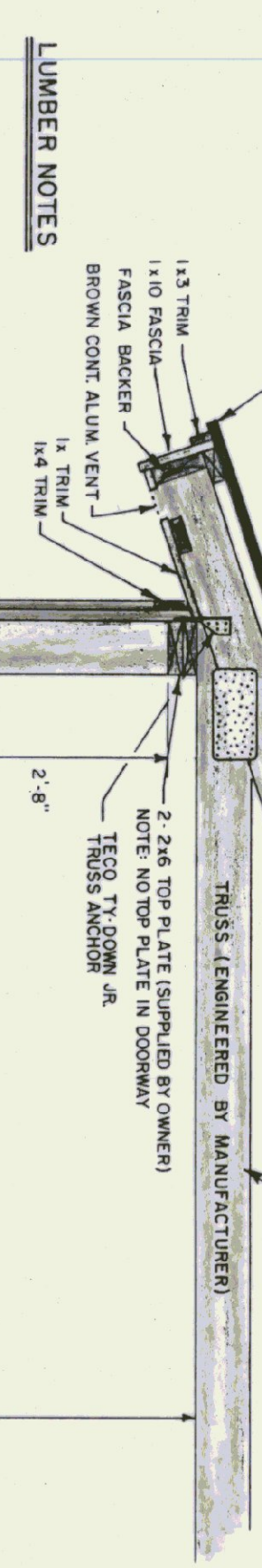


GOVERNOR HOWARD DEAN

AGENCY OF TRANSPORTATION  
133 STATE STREET  
MONTPELIER, VERMONT 05602  
PATRICK J. GARAHAN, SECRETARY







STATE OF VERMONT DEPARTMENT OF STATE BUILDINGS AGENCY OF ADMINISTRATION VERMONT	
AGENCY OF TRANSPORTATION LUNENBURG MAINTENANCE FACILITY 40' X 120' SALT SHED	
LUNENBURG	
DATE JUNE 1993	SCALE AS NOTED
DRAWN BY S.K. JAJANWICZ	APPROVED BY [Signature]
REVISIONS	DWG NO. A-1
	2 OF 3

