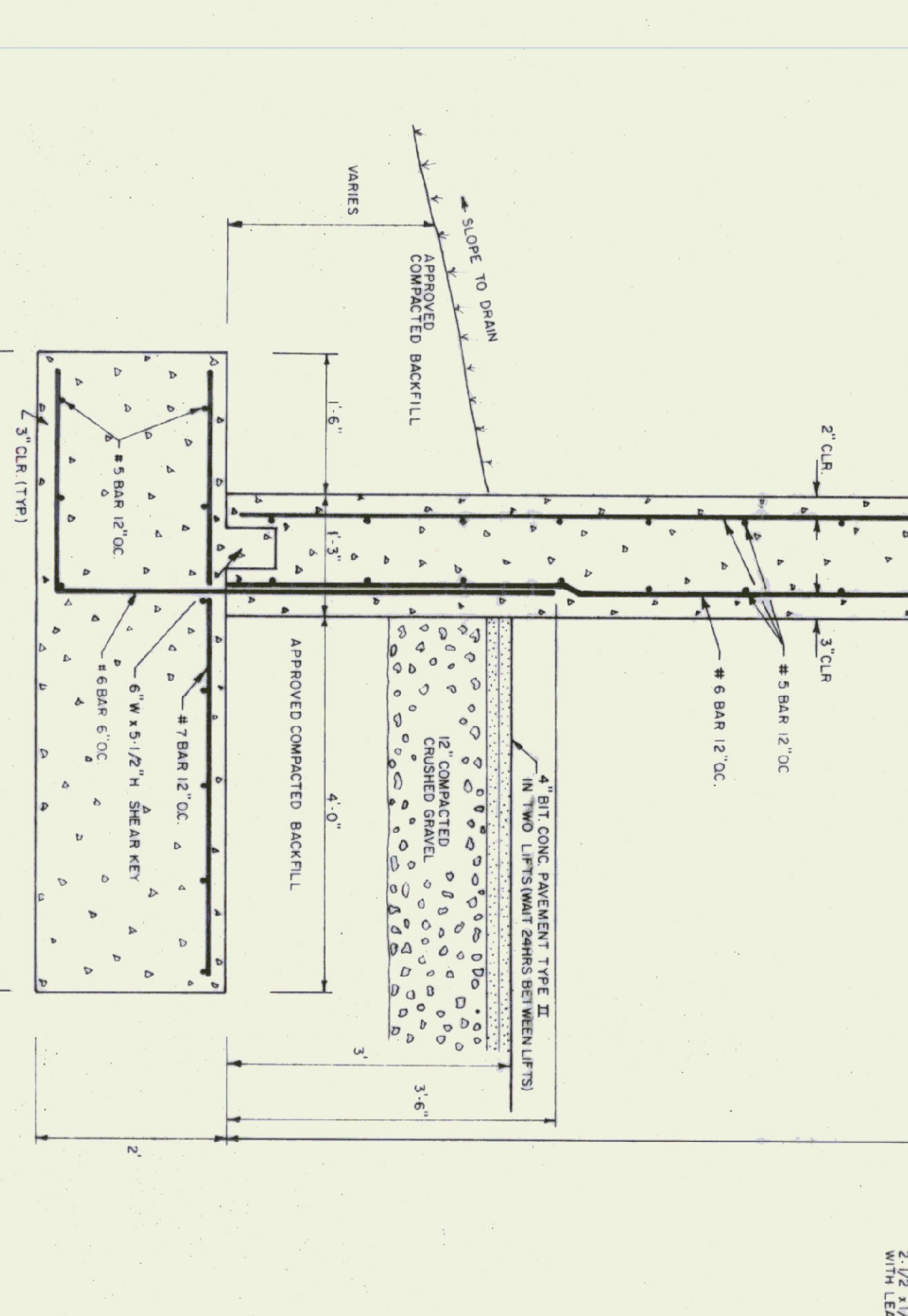
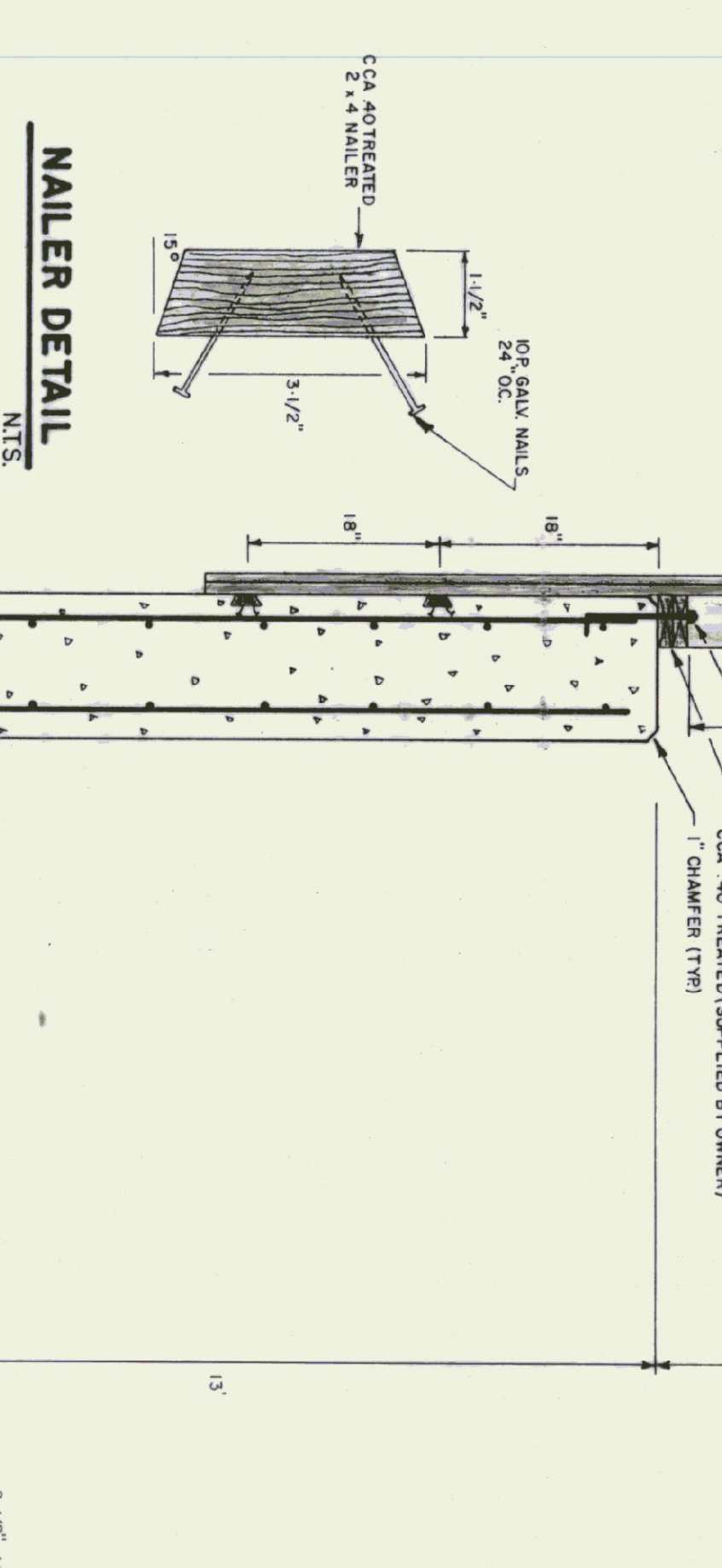
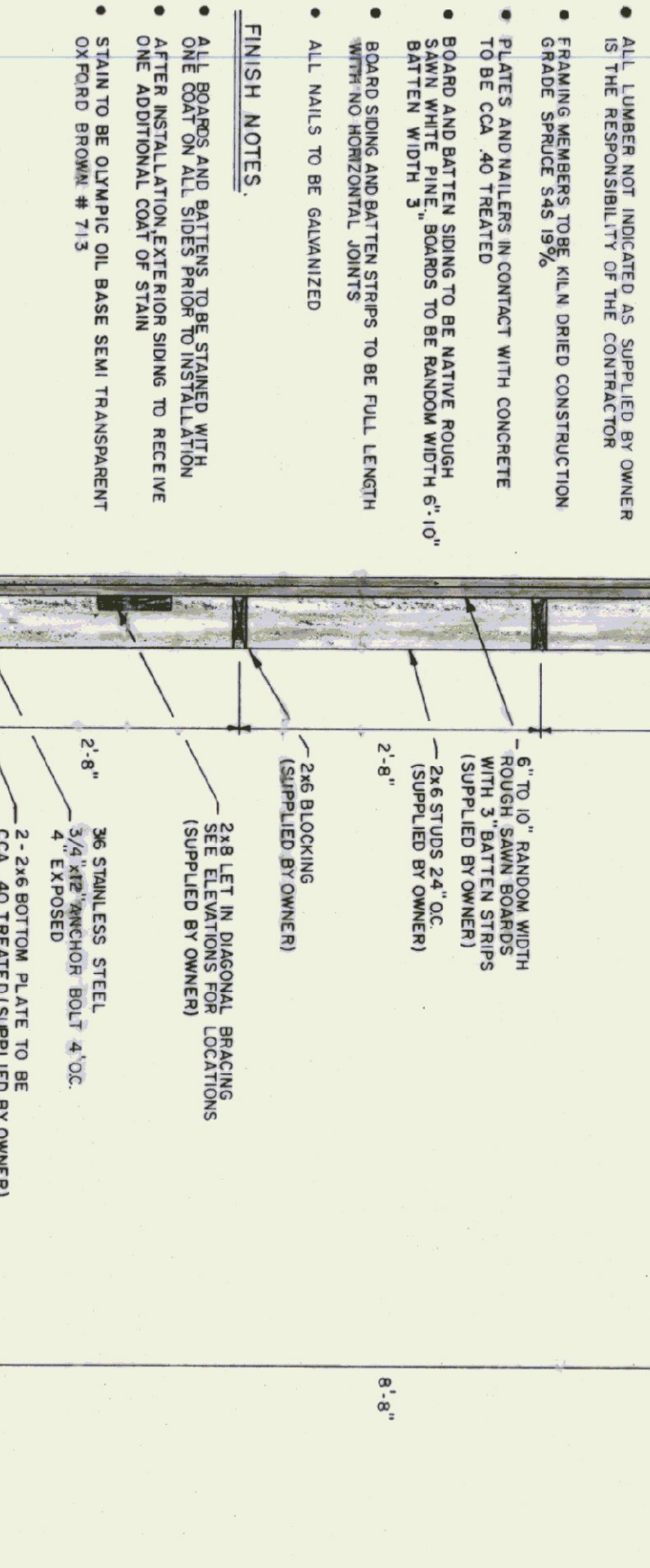


**LUMBER NOTES**

- ALL LUMBER NOT INDICATED AS SUPPLIED BY OWNER IS THE RESPONSIBILITY OF THE CONTRACTOR
- FRAMING MEMBERS TO BE KILN DRIED CONSTRUCTION GRADE SPECIES 20% MOISTURE
- PLATES AND NAILERS IN CONTACT WITH CONCRETE TO BE CCA 40 TREATED
- BOARD AND BATTEN SIDING TO BE NATIVE ROUGH BATTEN WIDTH 3" SQUARES TO BE RANDOM WIDTH 6"-10" WITH NO HORIZONTAL JOINTS
- BOARD SIDING AND BATTEN STRIPS TO BE FULL LENGTH
- ALL NAILS TO BE GALVANIZED

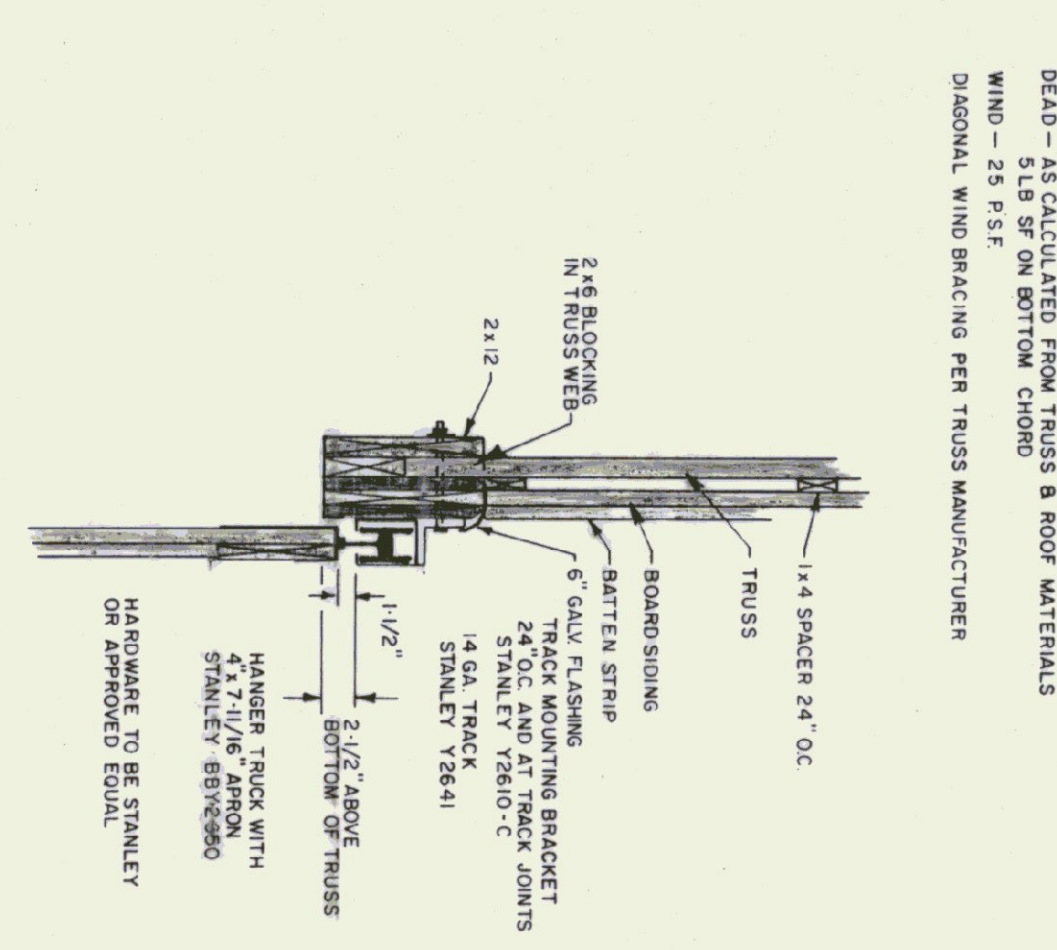
**FINISH NOTES**

- ALL BOARDS AND BATTENS TO BE STAINED WITH ONE COAT OF OIL BASE SEMI TRANSPARENT STAIN TO BE OLYMPIC OIL BASE SEMI TRANSPARENT OXFORD BROWN # 713

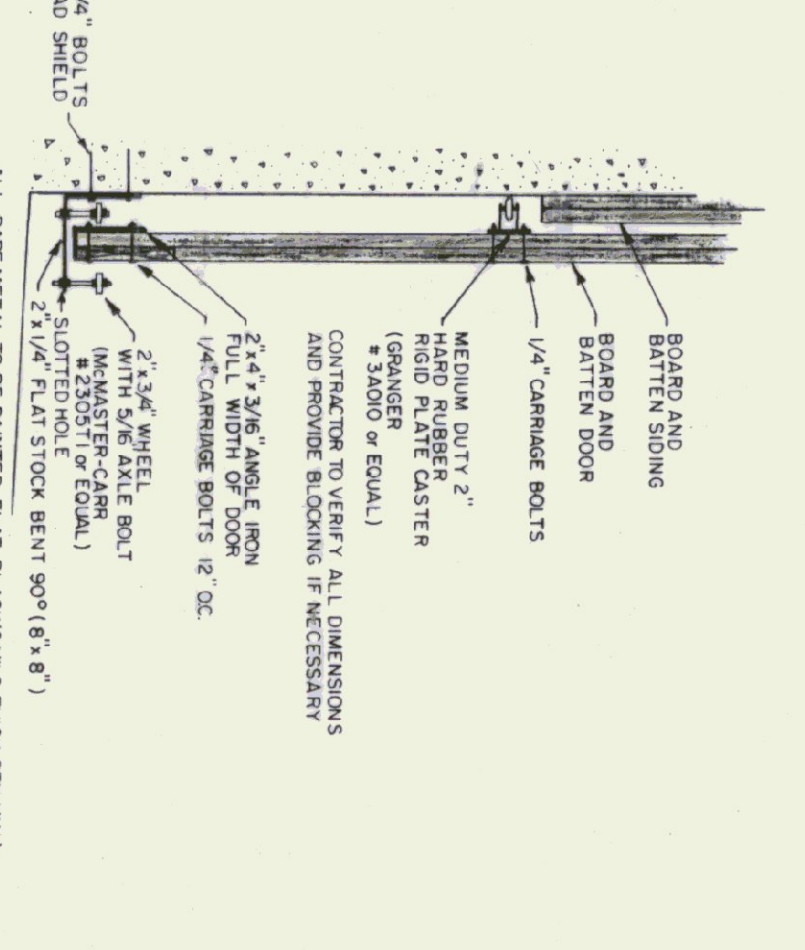


**TRUSS NOTES**

- TRUSS MANUFACTURER TO PROVIDE THE DEPT. OF STATE BUILDINGS ENGINEER A SET OF ENGINEERED & STAMPED DRAWINGS FOR APPROVAL PRIOR TO TRUSS MANUFACTURE
- TRUSS MANUFACTURER TO PROVIDE THE CONTRACTOR WITH ALL NECESSARY INSTRUCTIONS FOR PROPER TRUSS INSTALLATION, ANCHORAGE, BRACING, LIFTING ETC.
- TRUSS DESIGN LOADS IN ACCORDANCE WITH THE 1987 BOCA FOR WEAPOUT
- LIVE - PER 1987 BOCA FOR V.T. (LOOR FLOOR MIN.)
- DEAD - AS CALCULATED FROM TRUSS & ROOF MATERIALS
- WIND - 25 PSF
- DIAGONAL WIND BRACING PER TRUSS MANUFACTURER



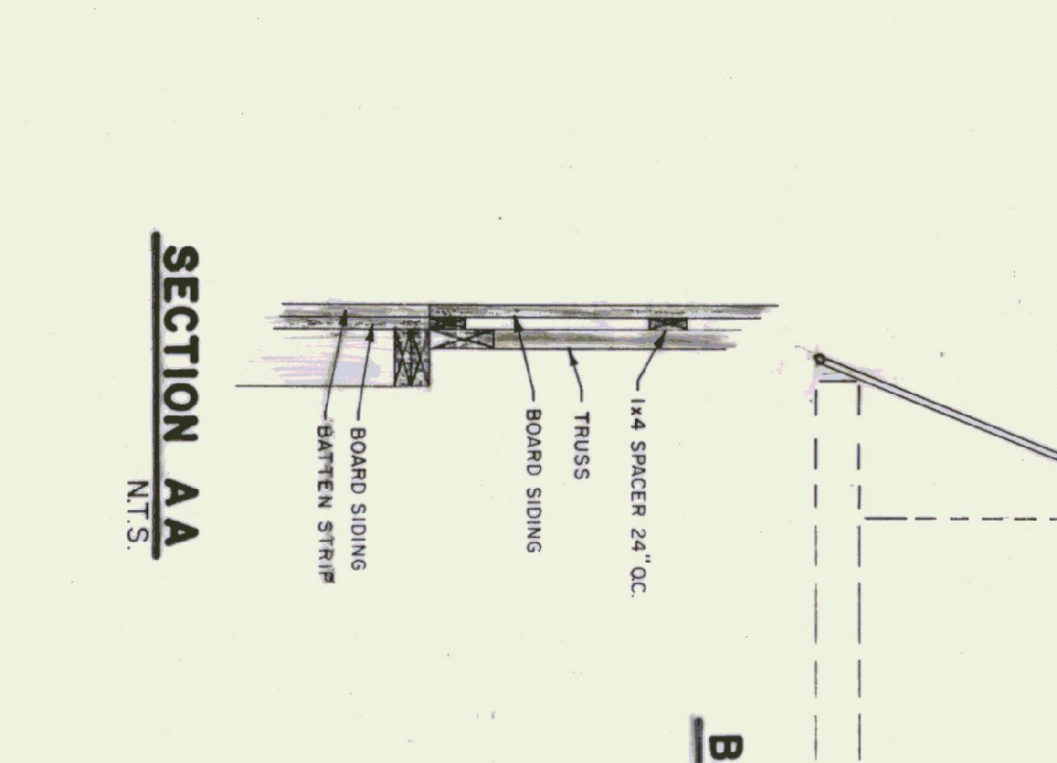
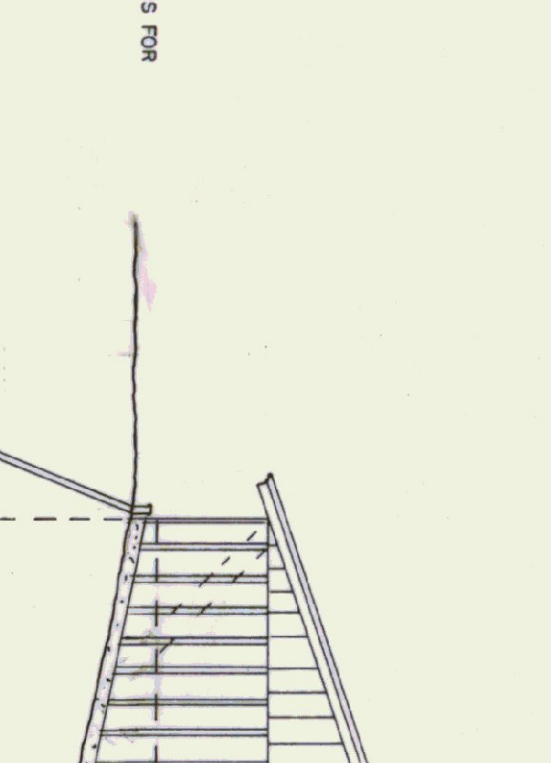
**TRACK MOUNT DETAIL**  
N.T.S.



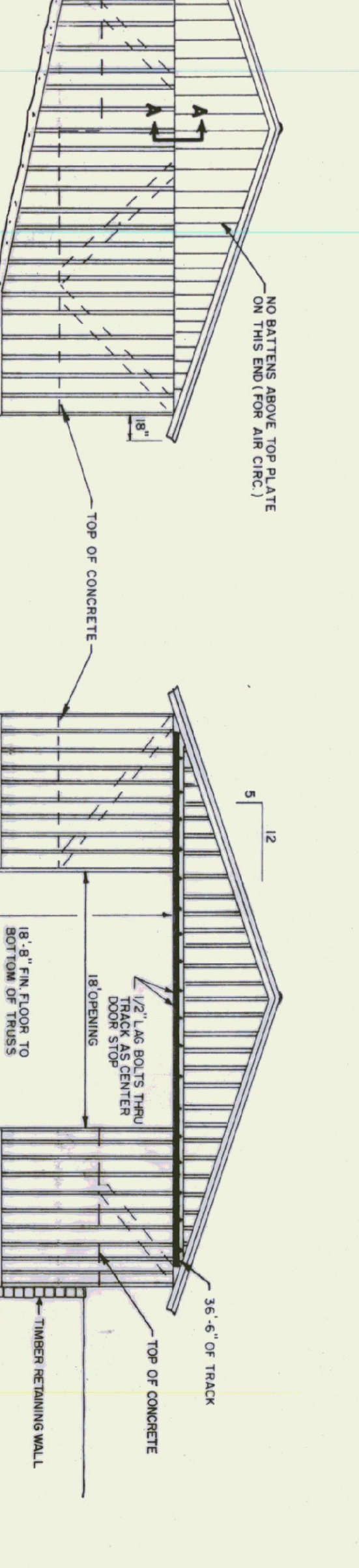
**DOOR GUIDE DETAIL**  
N.T.S.

**CONCRETE NOTES**

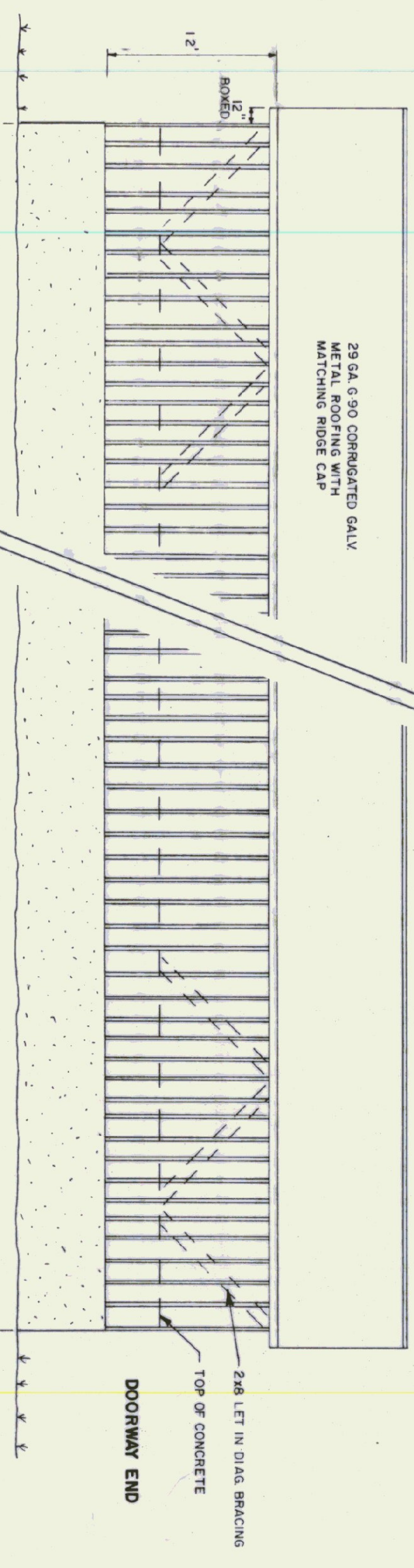
- ALL CONCRETE TO BE 3500 PSI AT 28 DAYS WITH MAXIMUM SLUMP OF 4"
- EXPOSED WALLS TO BE DRESS FINISH
- 1/2" V. JOINTS IN EXPOSED FACE OF CONST. JOINTS
- 3/4" CHAMFER ON EACH FACE OF EXPANSION JOINTS
- L. IRON CAST INTO WALL CORNERS AT DOOR OPENINGS
- RE BAR TO BE CONTINUOUS THROUGH CONST. JOINTS
- NO HORIZONTAL CONST. JOINTS IN WALLS, CONTINUOUS FOUR
- NO CONST. OR EXP. JOINTS REQUIRED IN FOOTINGS
- ALL RE BAR TO BE GRADE 60
- CONTRACTOR TO LEAVE NO METAL WITHIN 1" OF SURFACE. USE "DEEP PLASTIC CONES AT ALL TIES AND HUNG ALL THE HOLE TO BE STORED ON BLOCKING 4" MIN ABOVE GROUND FOR TESTING BY OWNER
- CONCRETE SUPPLIER TO PROVIDE TEST CYLINDERS
- CONCRETE SUPPLIER TO CONDUCT ON SITE AIR TESTS



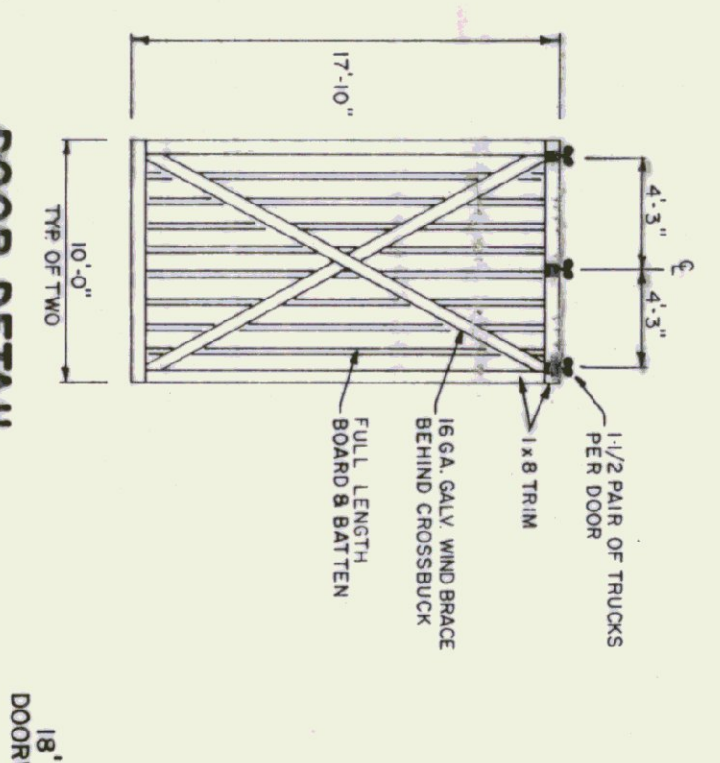
**BACK ELEVATION**  
1/8" = 1'-0"



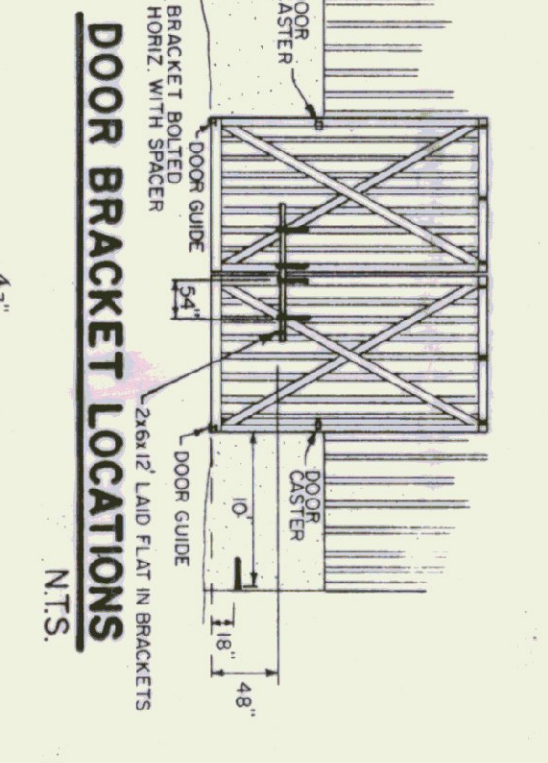
**FRONT ELEVATION**  
1/8" = 1'-0"



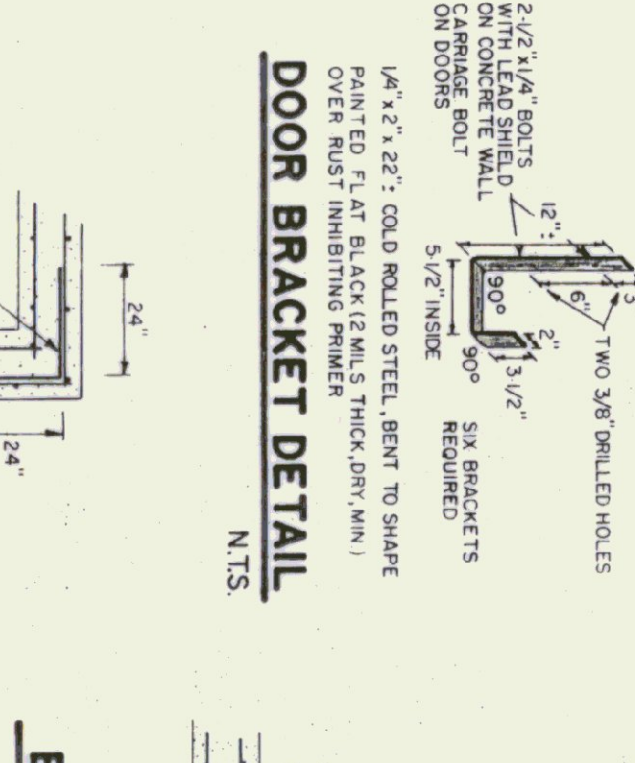
**SIDE ELEVATION**  
1/8" = 1'-0"



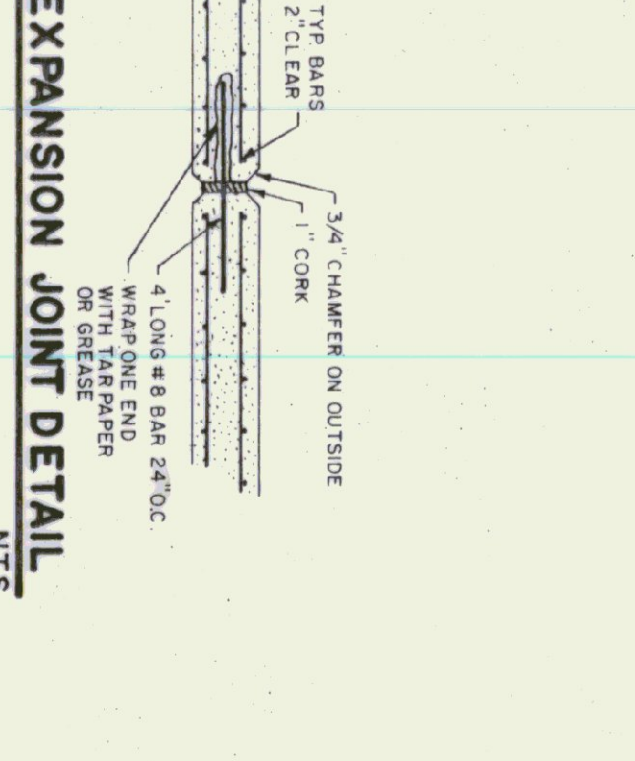
**DOOR DETAIL**  
N.T.S.



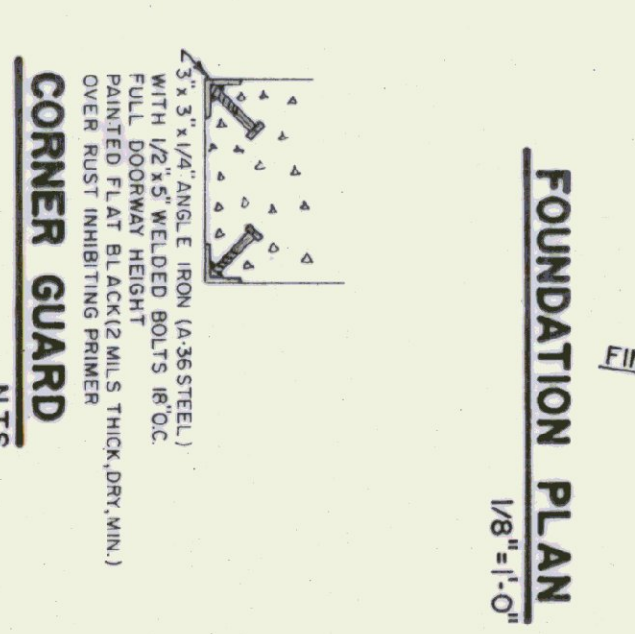
**DOOR BRACKET LOCATIONS**  
N.T.S.



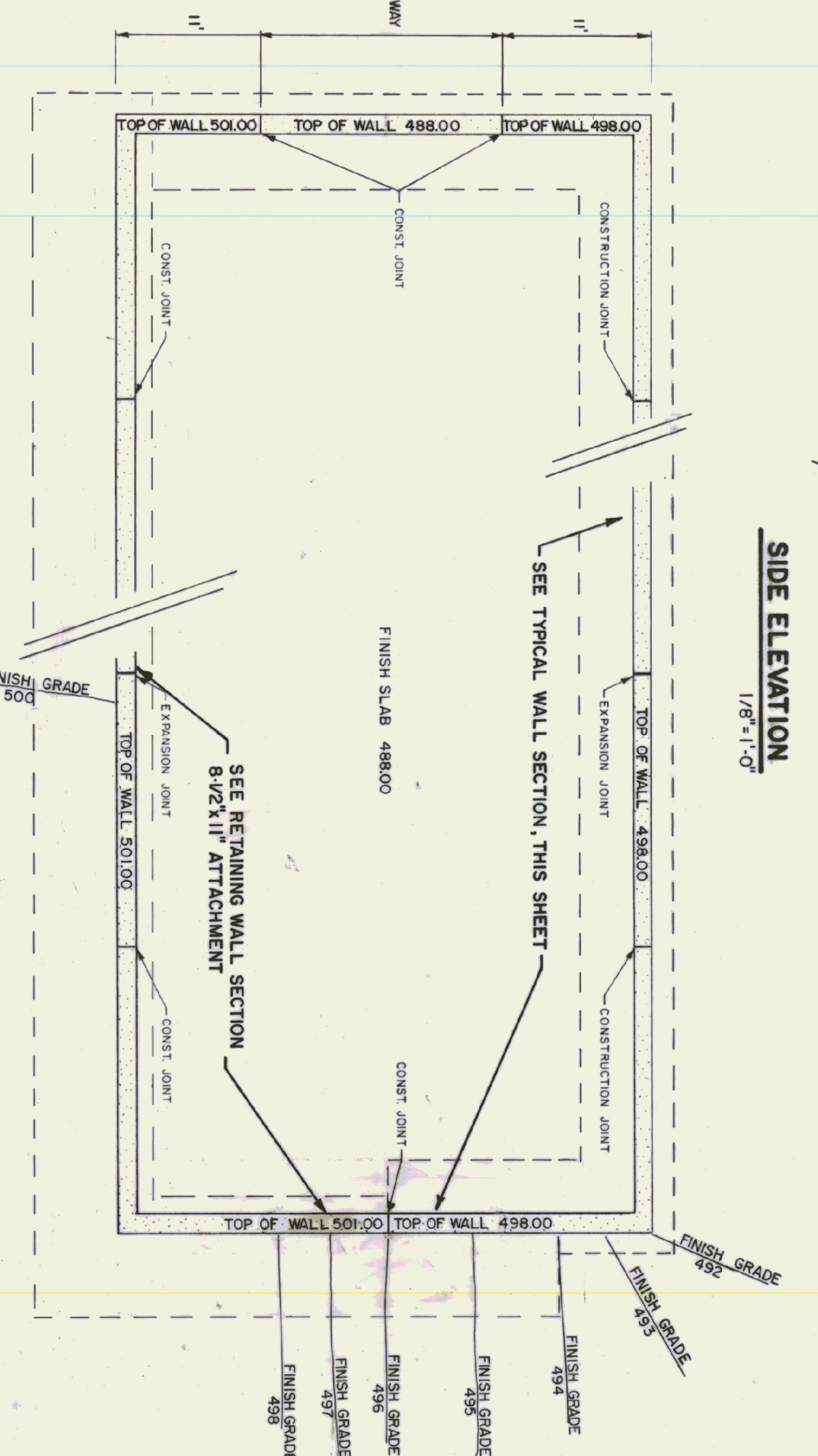
**DOOR BRACKET DETAIL**  
N.T.S.



**EXPANSION JOINT DETAIL**  
N.T.S.



**CORNER GUARD**  
N.T.S.



**FOUNDATION PLAN**  
1/8" = 1'-0"

STATE OF VERMONT  
DEPARTMENT OF STATE BUILDINGS  
AGENCY OF ADMINISTRATION  
VERMONT  
MONTPELIER

AGENCY OF TRANSPORTATION  
LUNENBURG MAINTENANCE FACILITY  
40' X 120' SALT SHED

LUNENBURG  
DATE: JUNE 1993  
SCALE: AS NOTED  
DRAWN BY: S.K. JANKOWICZ  
APPROVED BY: [Signature]

VERMONT  
DWG. NO. A-1  
2 OF 3