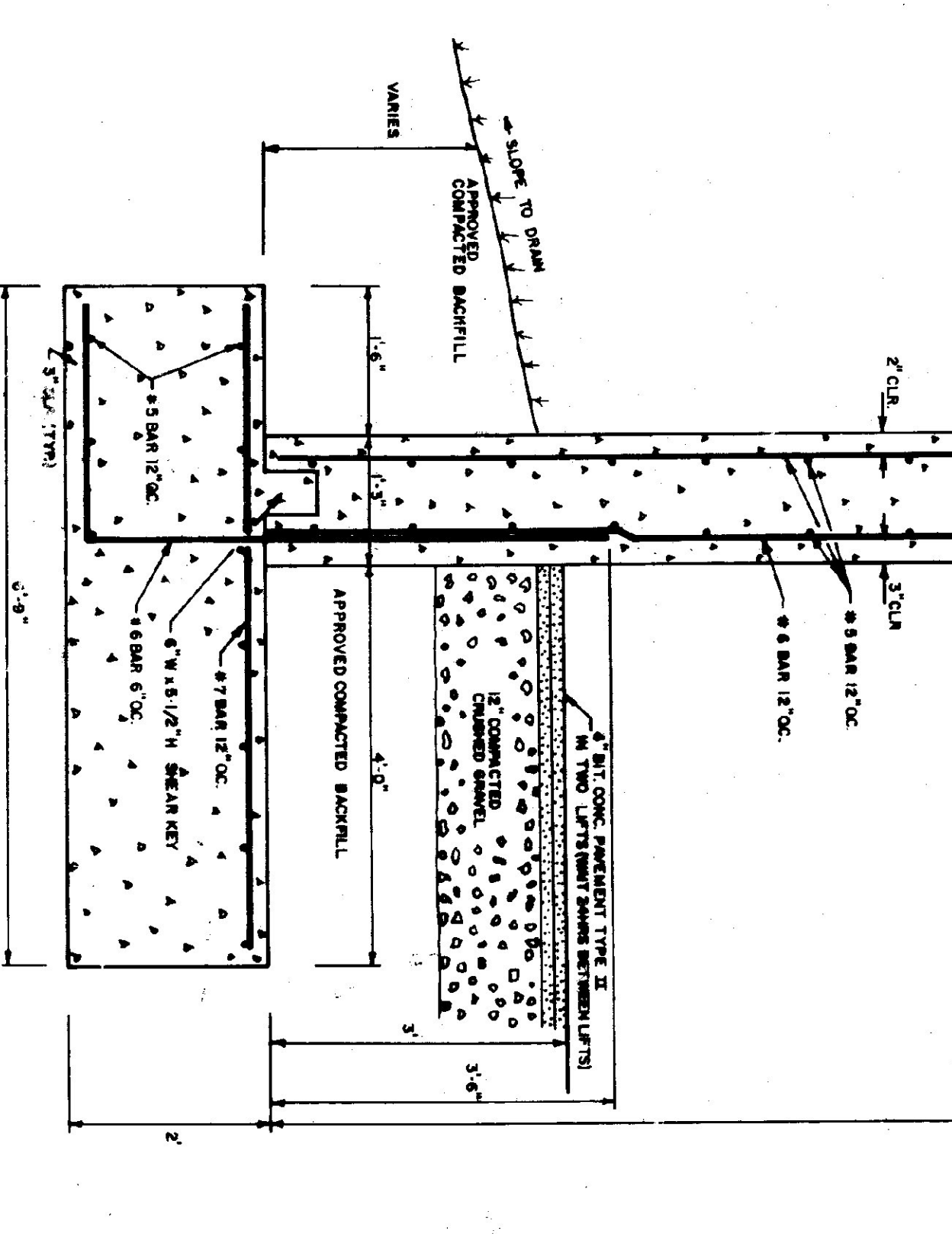
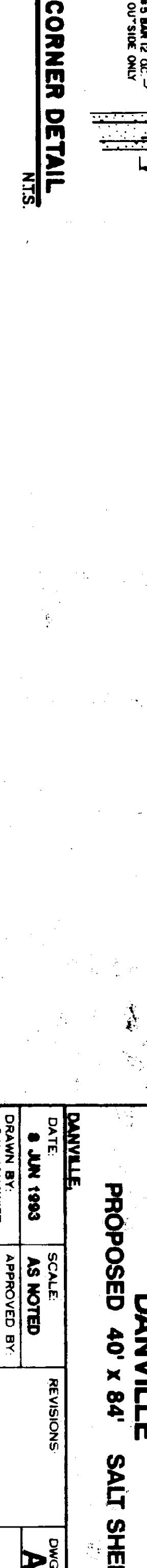
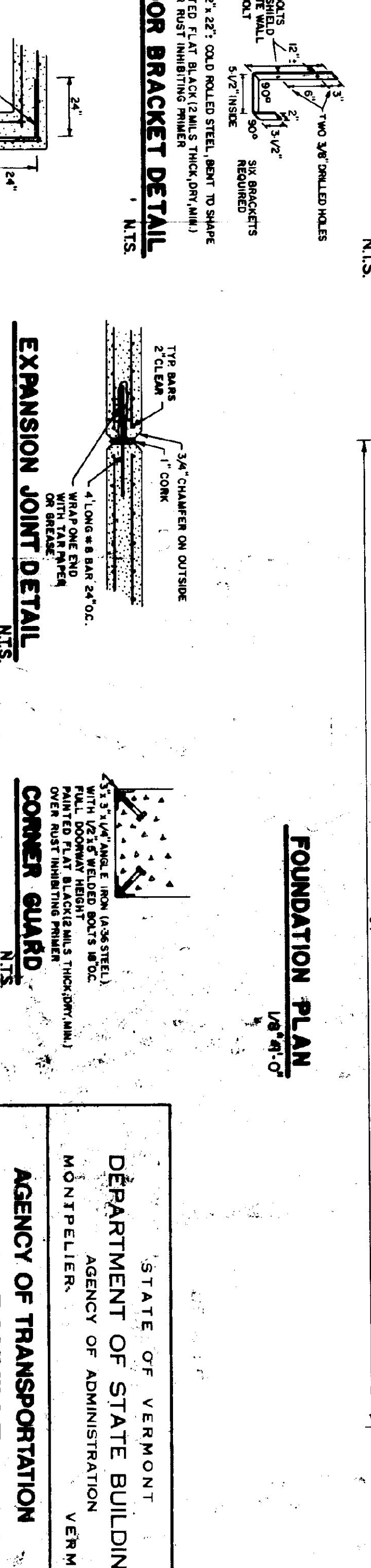
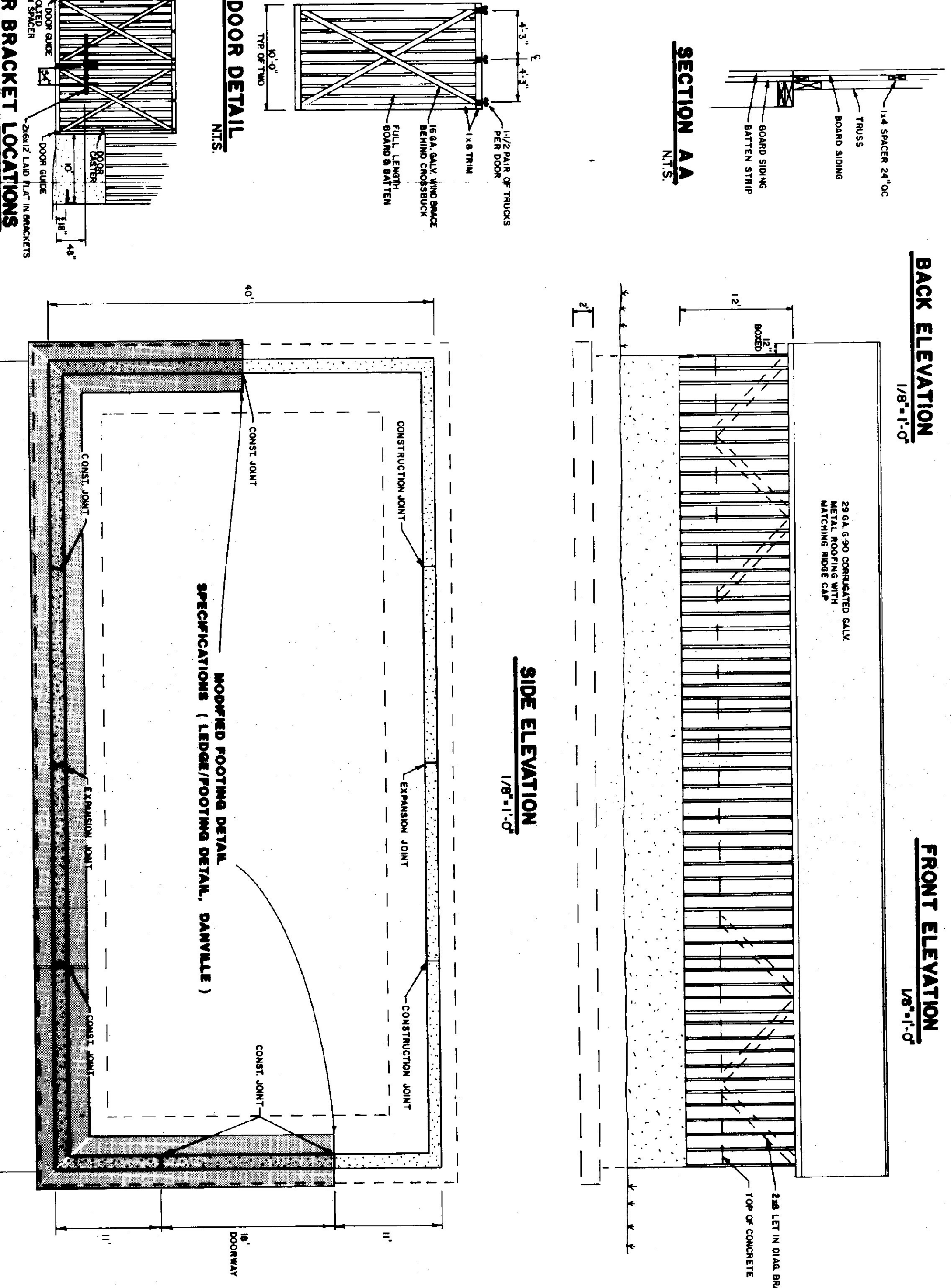
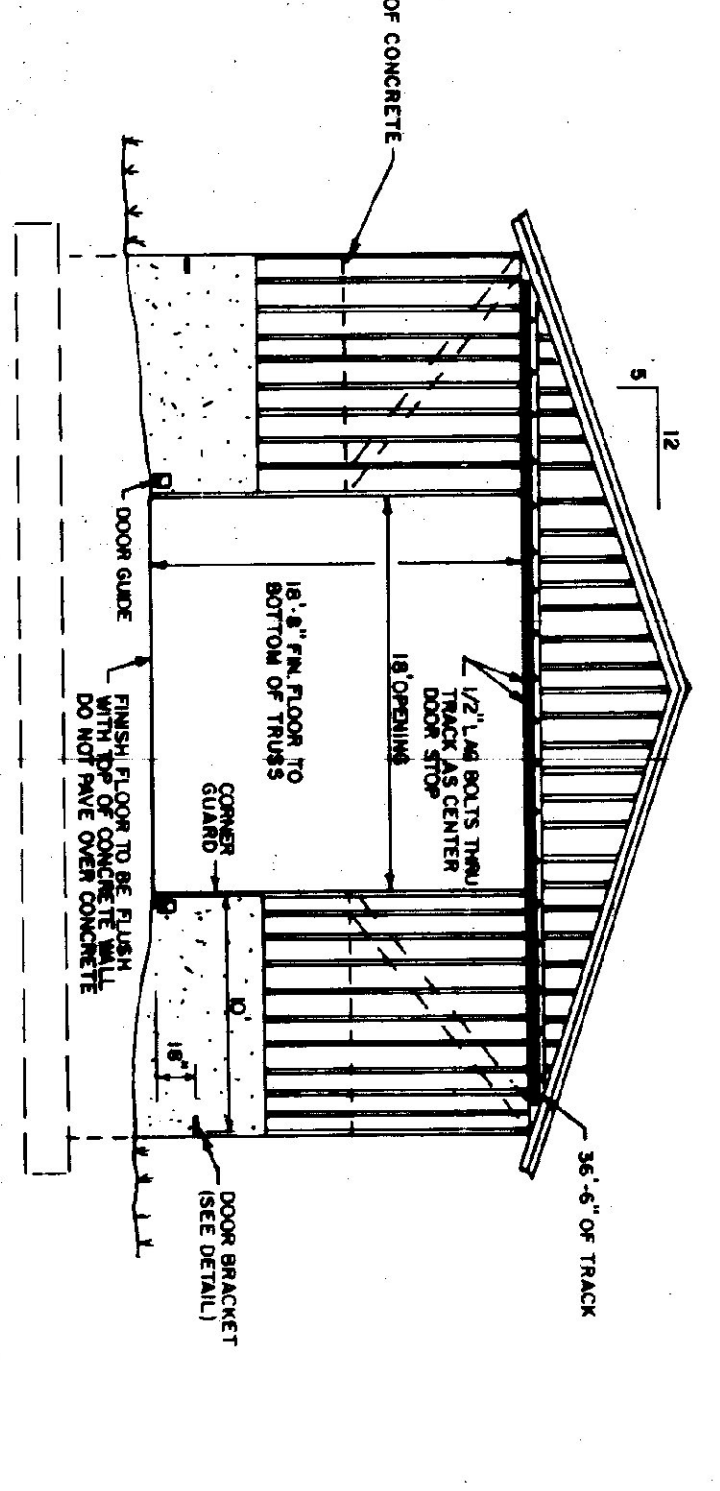
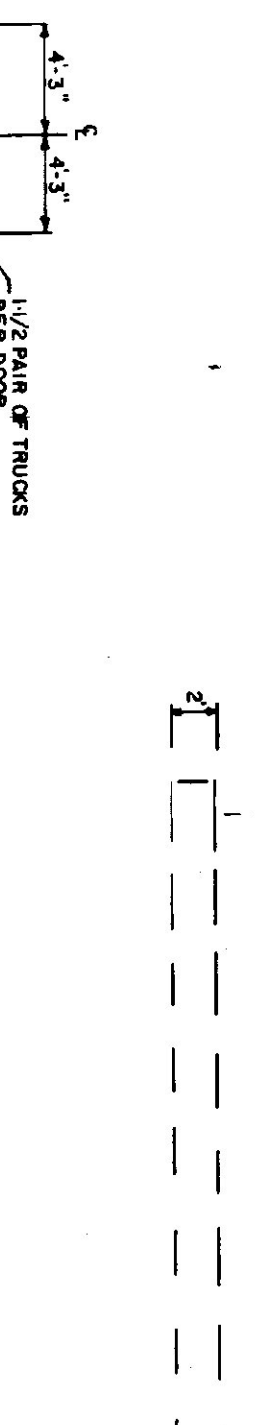
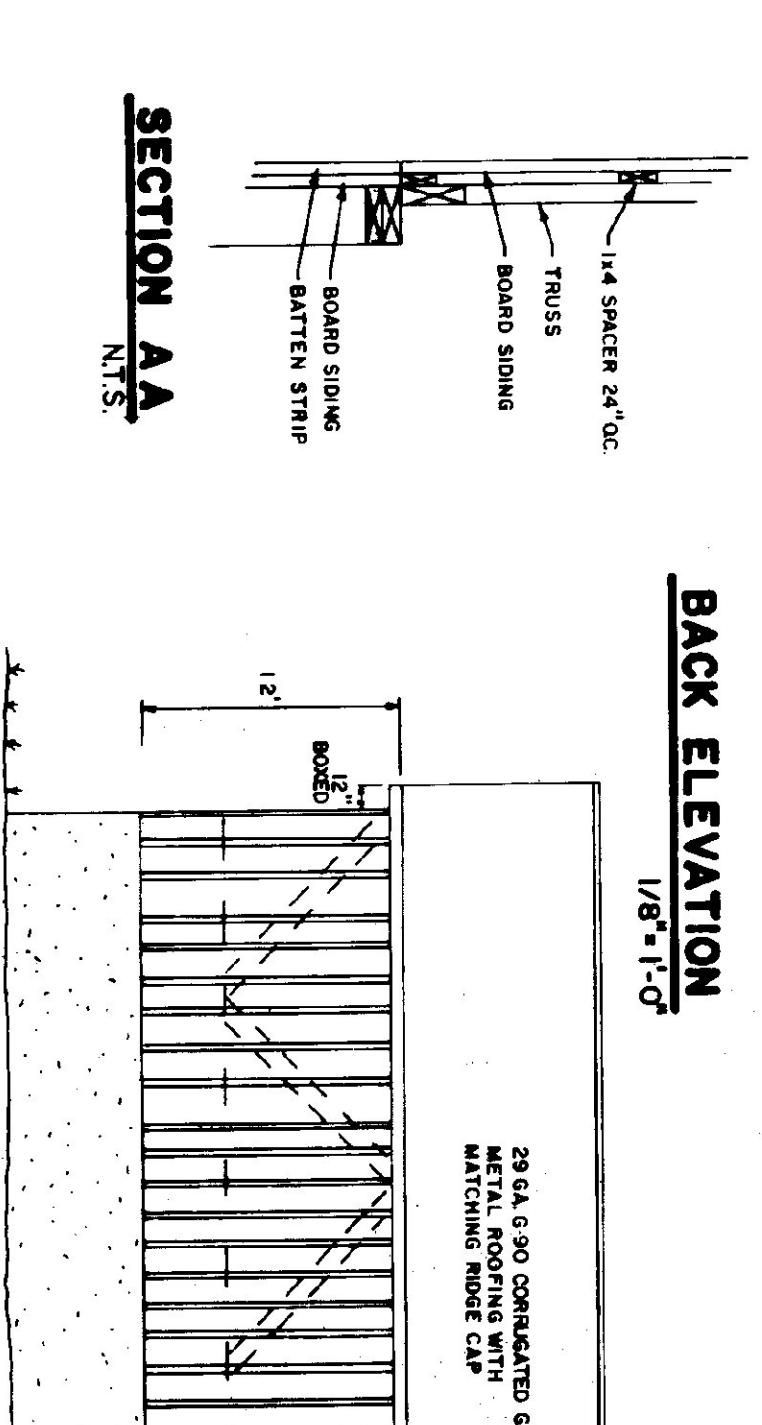
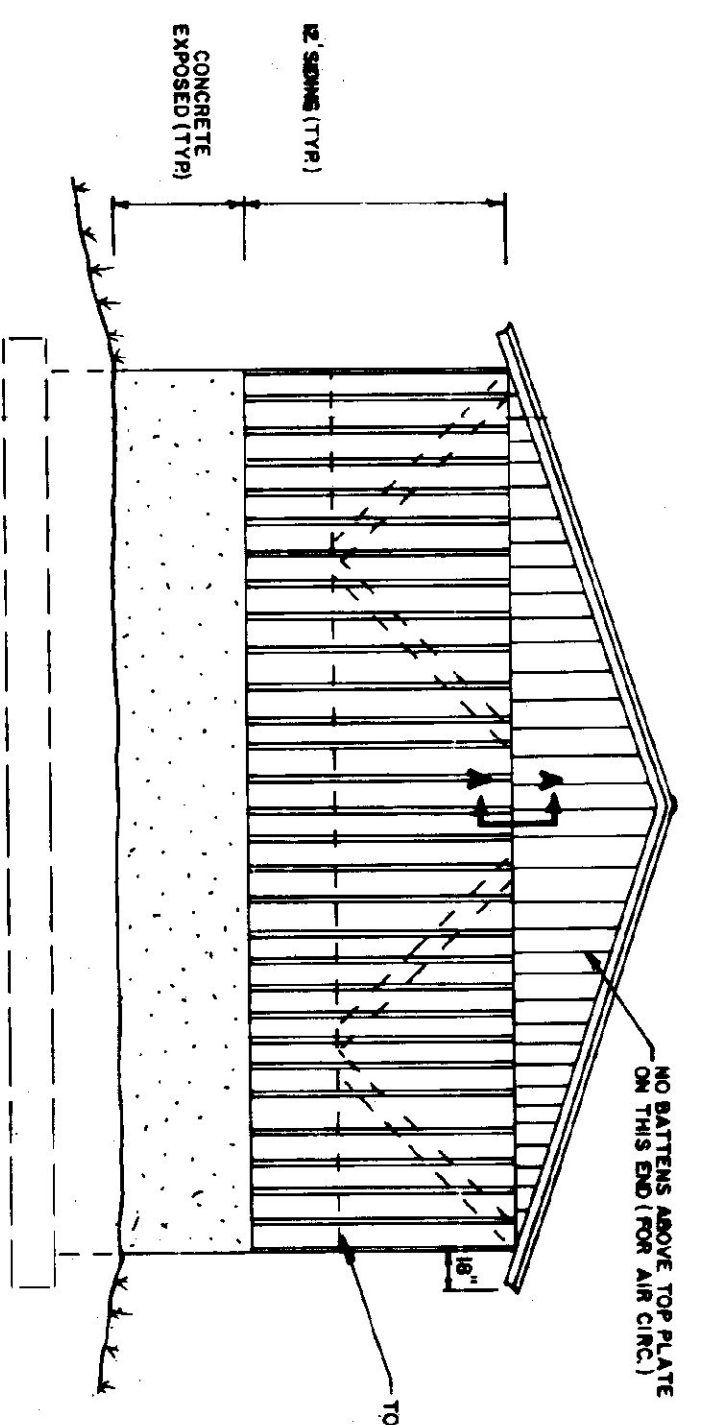
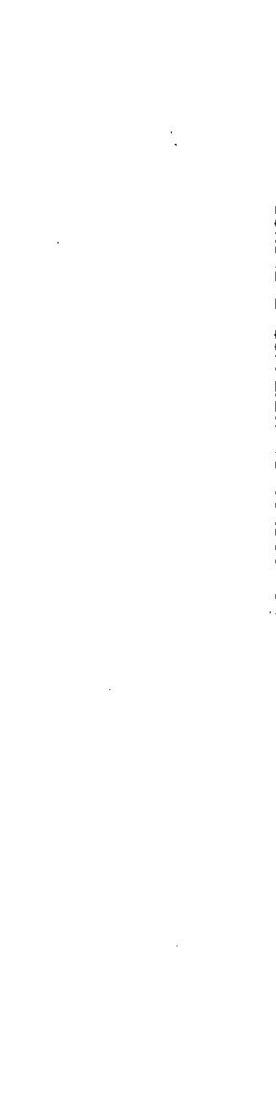
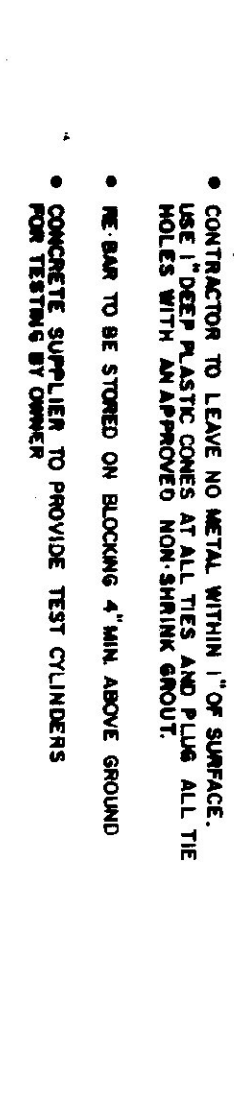
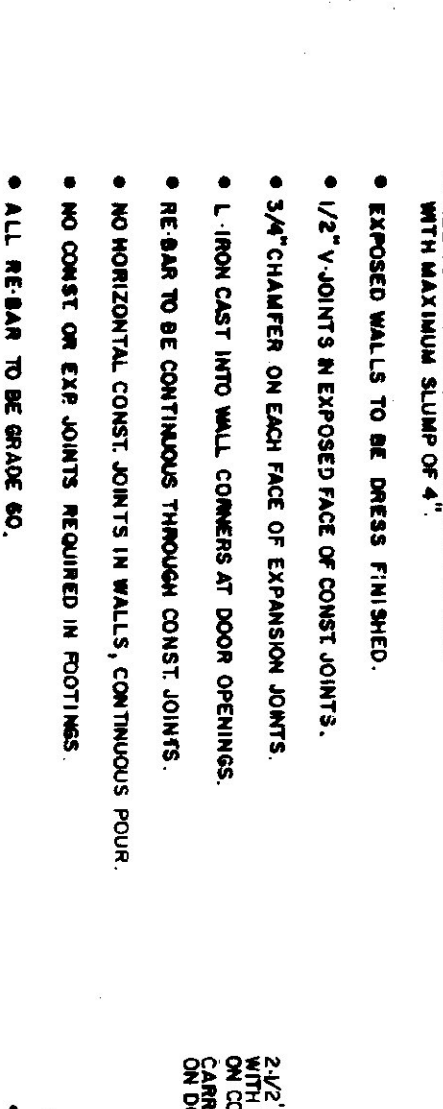
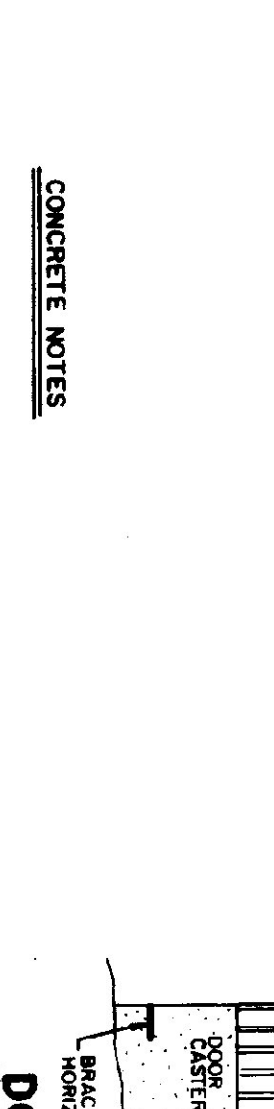
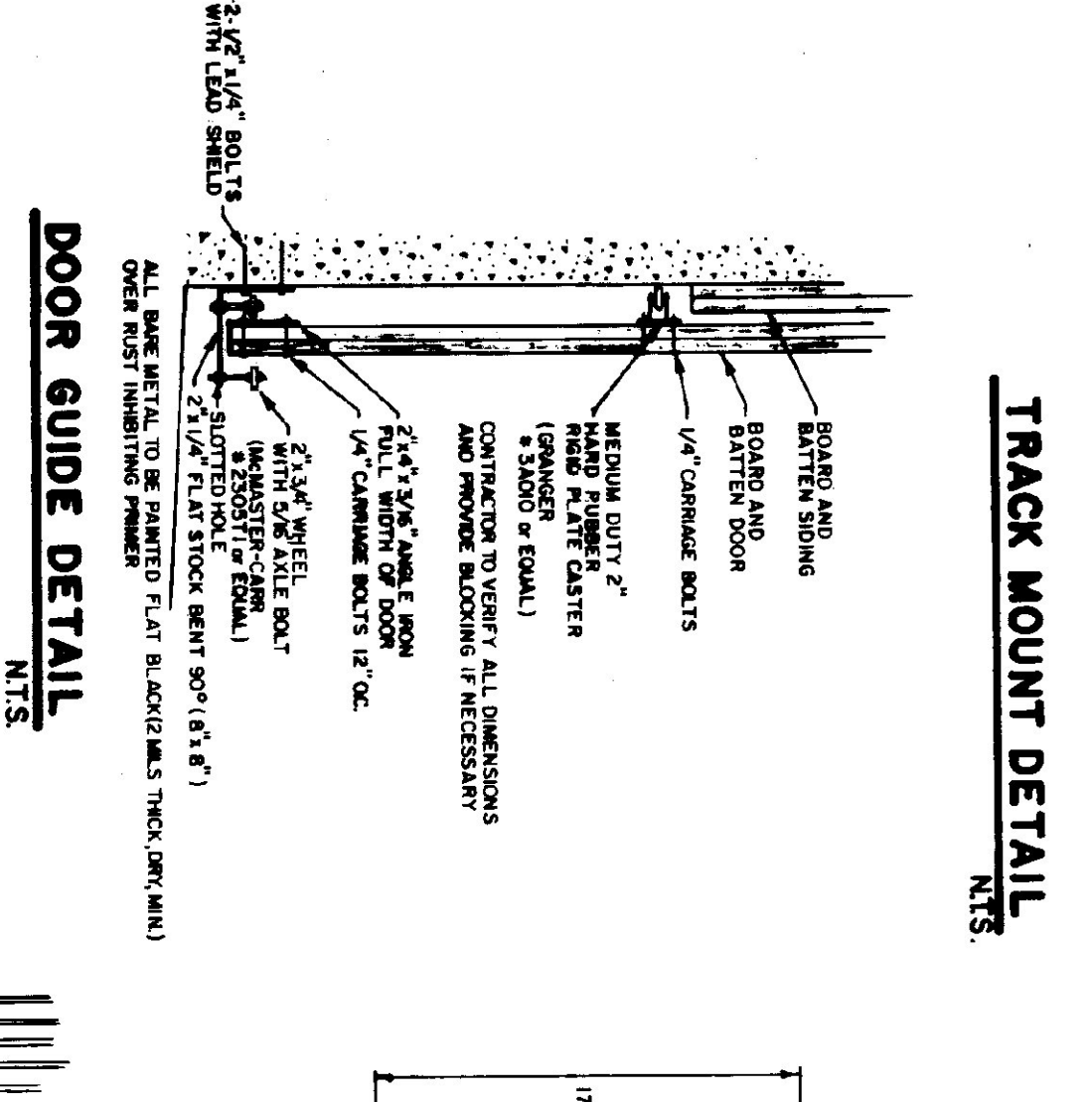
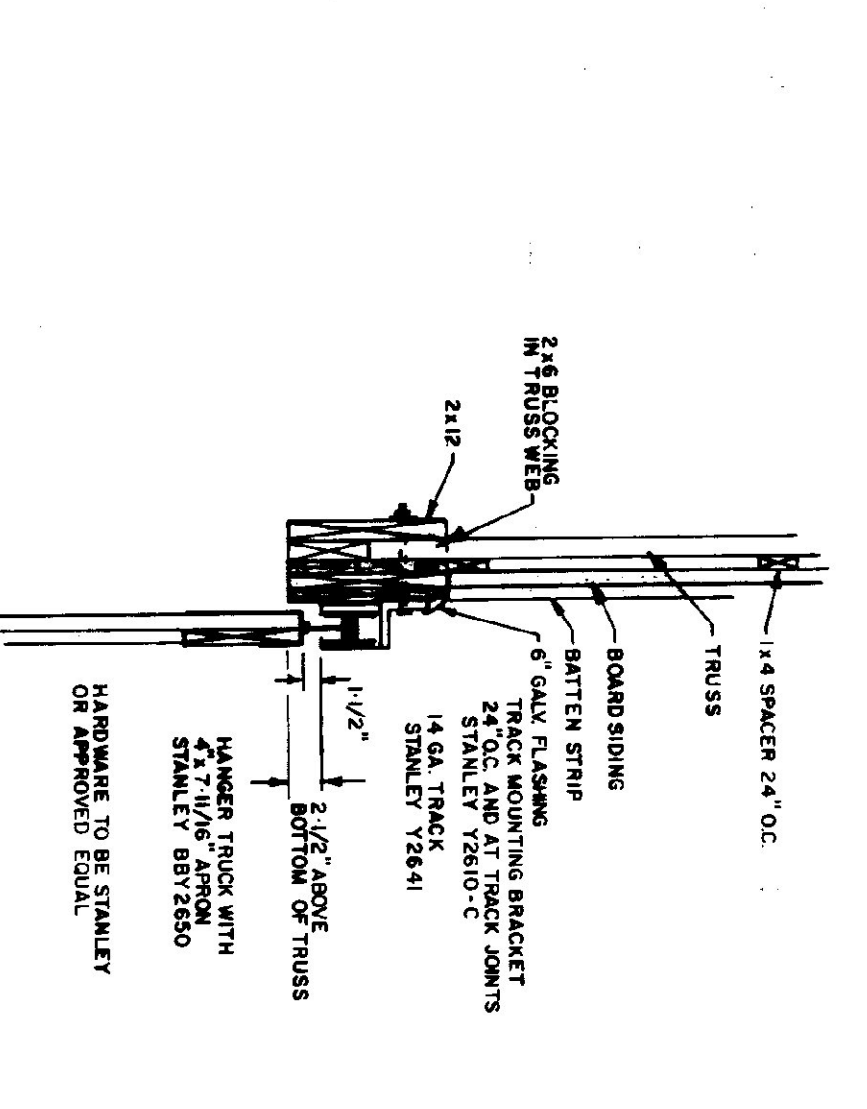
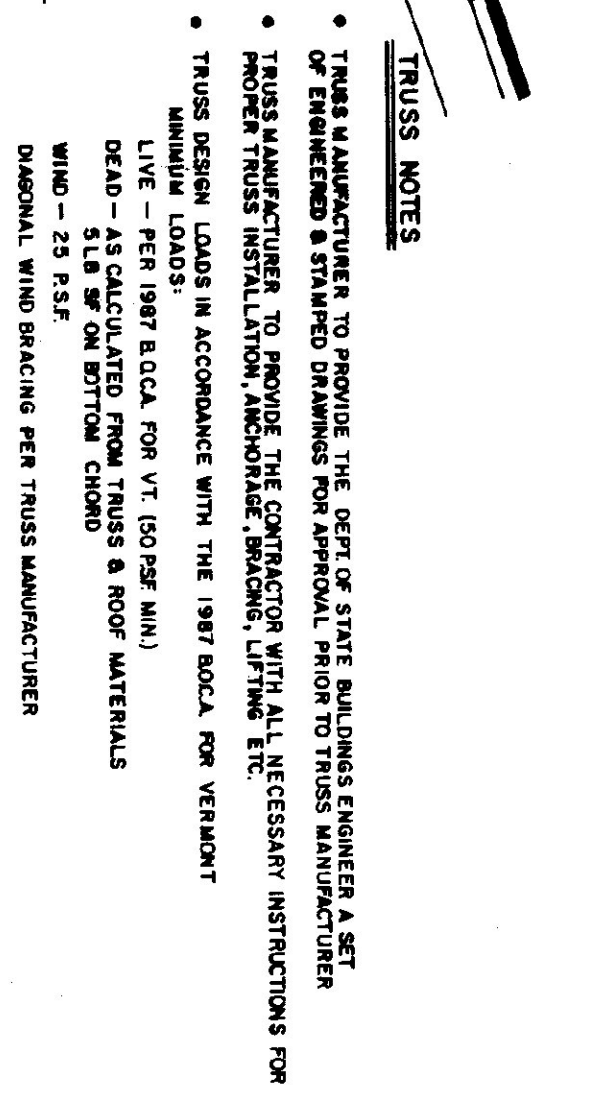
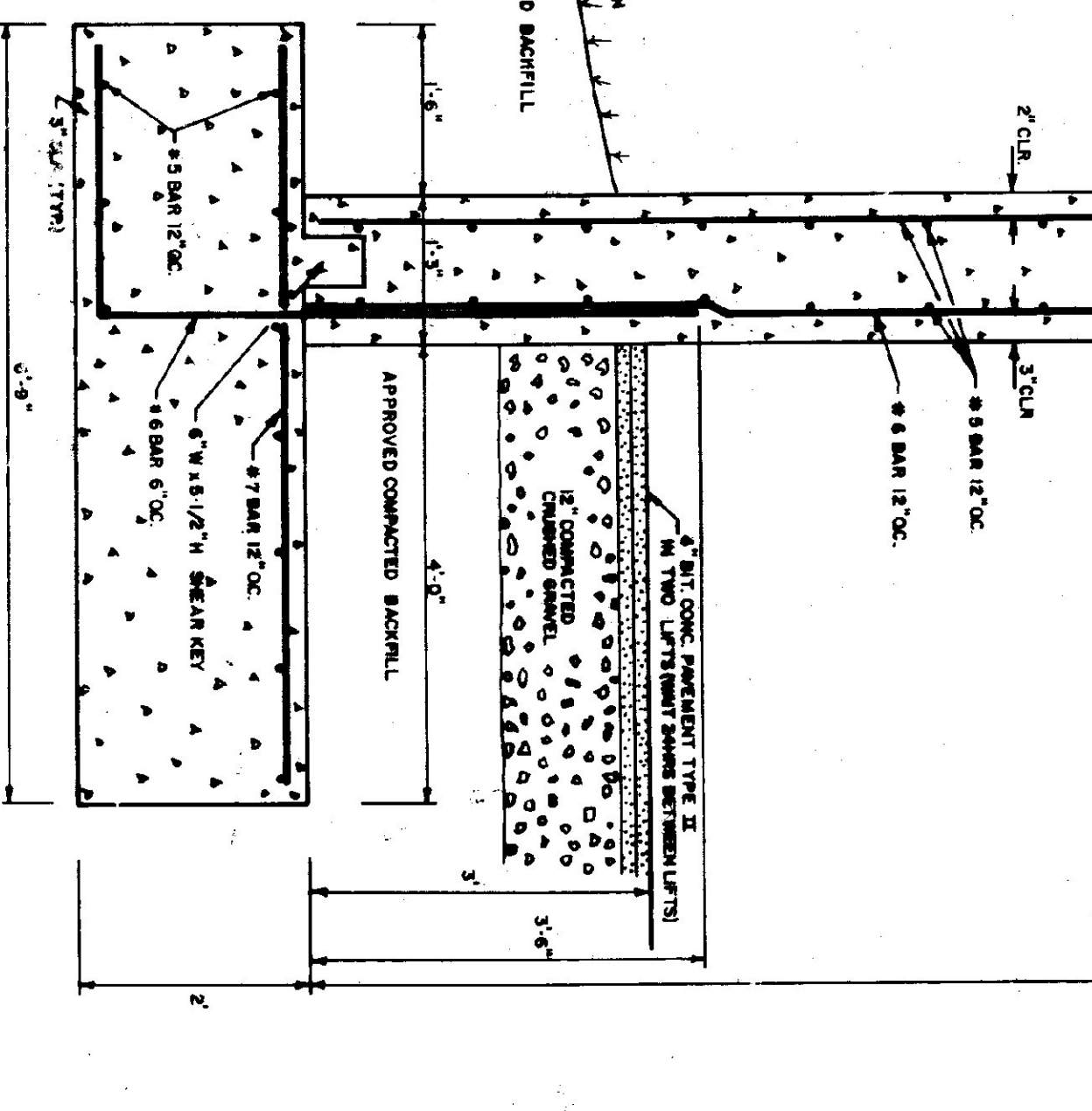


MALER DETAIL
NTS



TYPICAL WALL SECTION
3/4" = 1'-0"



STATE OF VERMONT DEPARTMENT OF STATE BUILDINGS AGENCY OF ADMINISTRATION VERMONT	
AGENCY OF TRANSPORTATION DANVILLE PROPOSED 40' x 84' SALT SHED	
DRAWN BY S.K. JAKAWICZ	APPROVED BY F. PRATT
DATE 9 JUN 1983	SCALE AS NOTED
REVISIONS	DWG. NO. A - 1
	VERMONT 2 OF 2