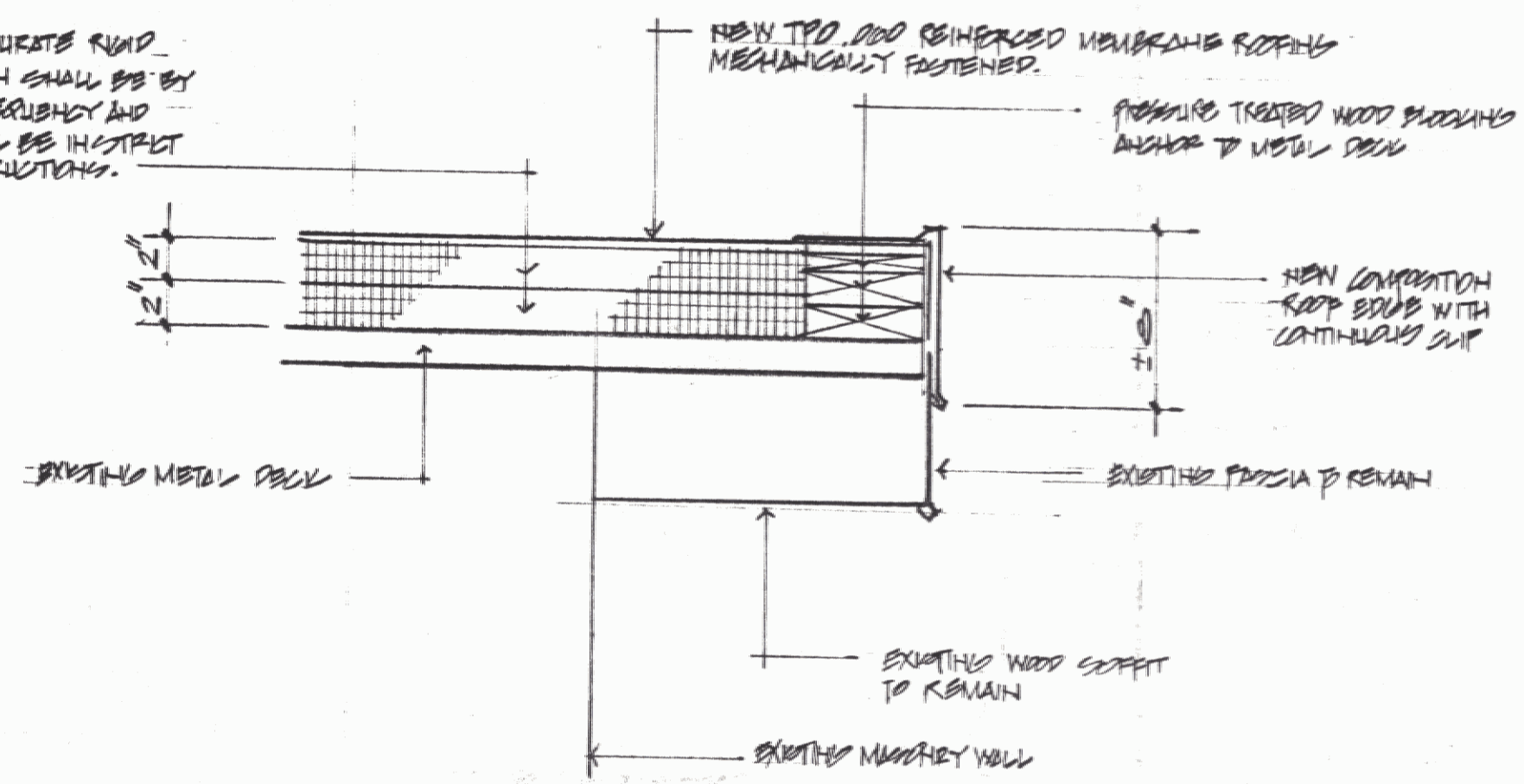
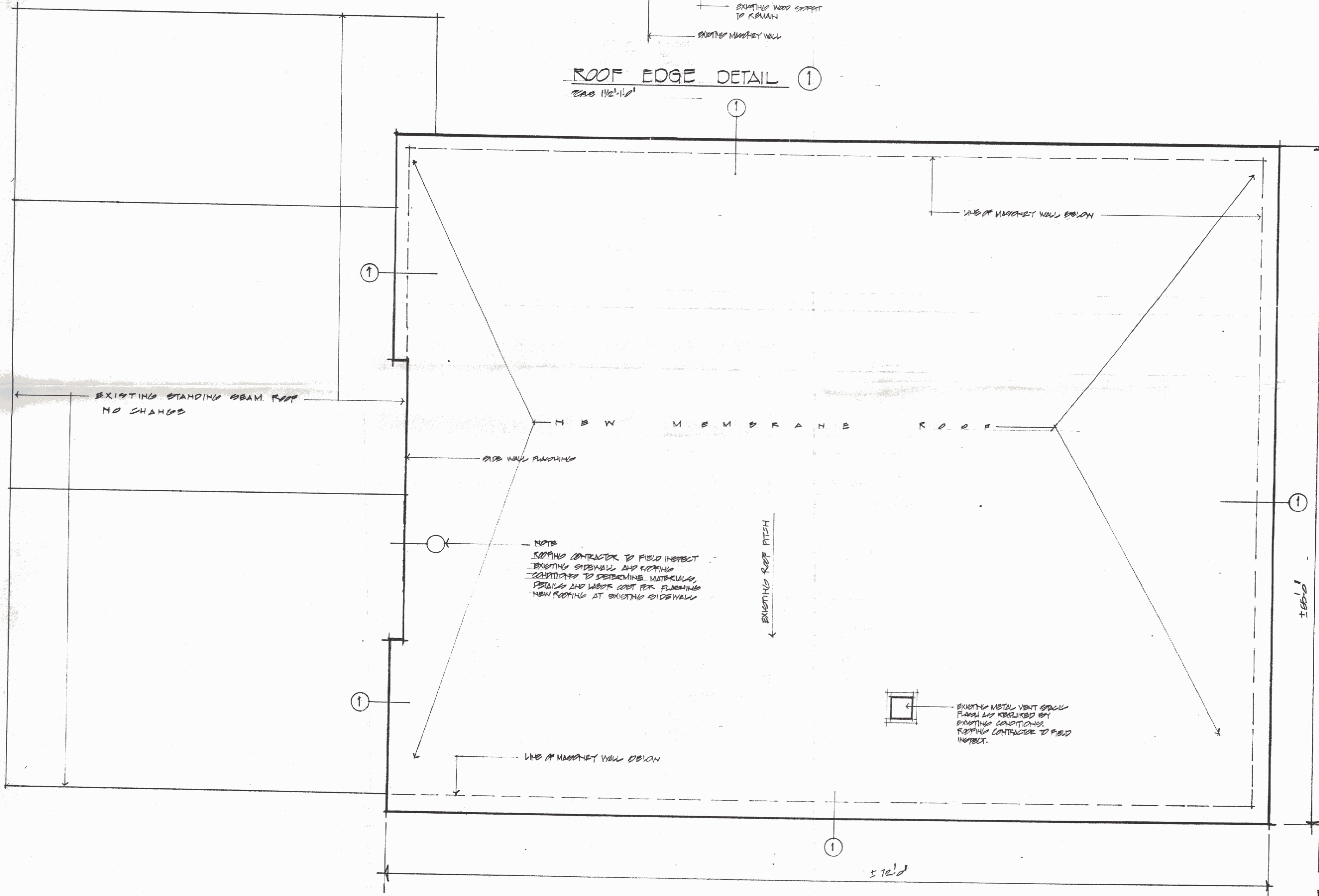


(2) 2" LAYER OF POLYURETHANE FOAM
 FROM INSULATION INSTALLATION SHALL BE BY
 MECHANICAL ATTACHMENT, FREQUENTLY AND
 SPACING OF FASTENERS SHALL BE INSTANT
 APPROXIMATE WITH MFG. INSTRUCTIONS.



ROOF EDGE DETAIL ①

SCALE 1/2"=1'-0"

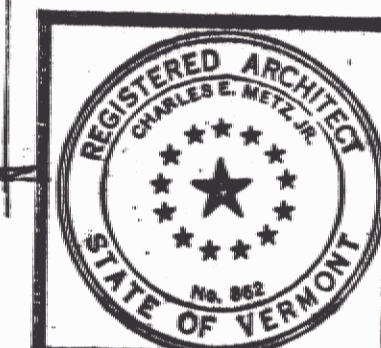


ROOF PLAN SCALE 1/4"=1'-0"

NOTES

1. FIELD VERIFY ALL DIMENSIONS AND EXISTING CONDITIONS.
2. REMOVE ALL EXISTING INSULATION TO METAL DECK. REMOVE ALL FLASHING AND METAL ROOF EDGES. SEE DETAIL 1
3. INSTALL (2) 2" THICK LAYERS OF POLYURETHANE FOAM FROM INSULATION WITH MECHANICAL ATTACHMENT TO EXISTING METAL DECK.
4. INSTALL NEW TPO, 200 REINFORCED MEMBRANE ROOFING MECHANICALLY FASTENER AS SELECTED BY OWNER.
5. ALL BRACKETS W/ROOF TO BE PRESSURE TREATED.
6. ALL MATERIAL REMOVED SHALL BE PROPERLY AND LEGALLY DISPOSED OF OFF THE SITE.
7. ROOFING CONTRACTOR SHALL SUBMIT HAZMAT SITE GENERAL WITH BID.
8. ROOFING CONTRACTOR TO PROVIDE A 10 YEAR TOTAL ROOFING SYSTEM WARRANTY INCLUDING: INSULATION, MEMBRANE, FLASHING, ADHESIVES, FASTENERS.

DO NOT COPY SET # 3



PROJECT:
 NEW MEMBRANE ROOF
 BRADFORD AOT BRADFORD VT.
 TITLE:
 ROOF PLAN
 DETAILS AND NOTES

2005
 CHARLES E. METZ
 ARCHITECT
 THE GRIST MILL
 BRADFORD VT 05033

DRAWING:
 1