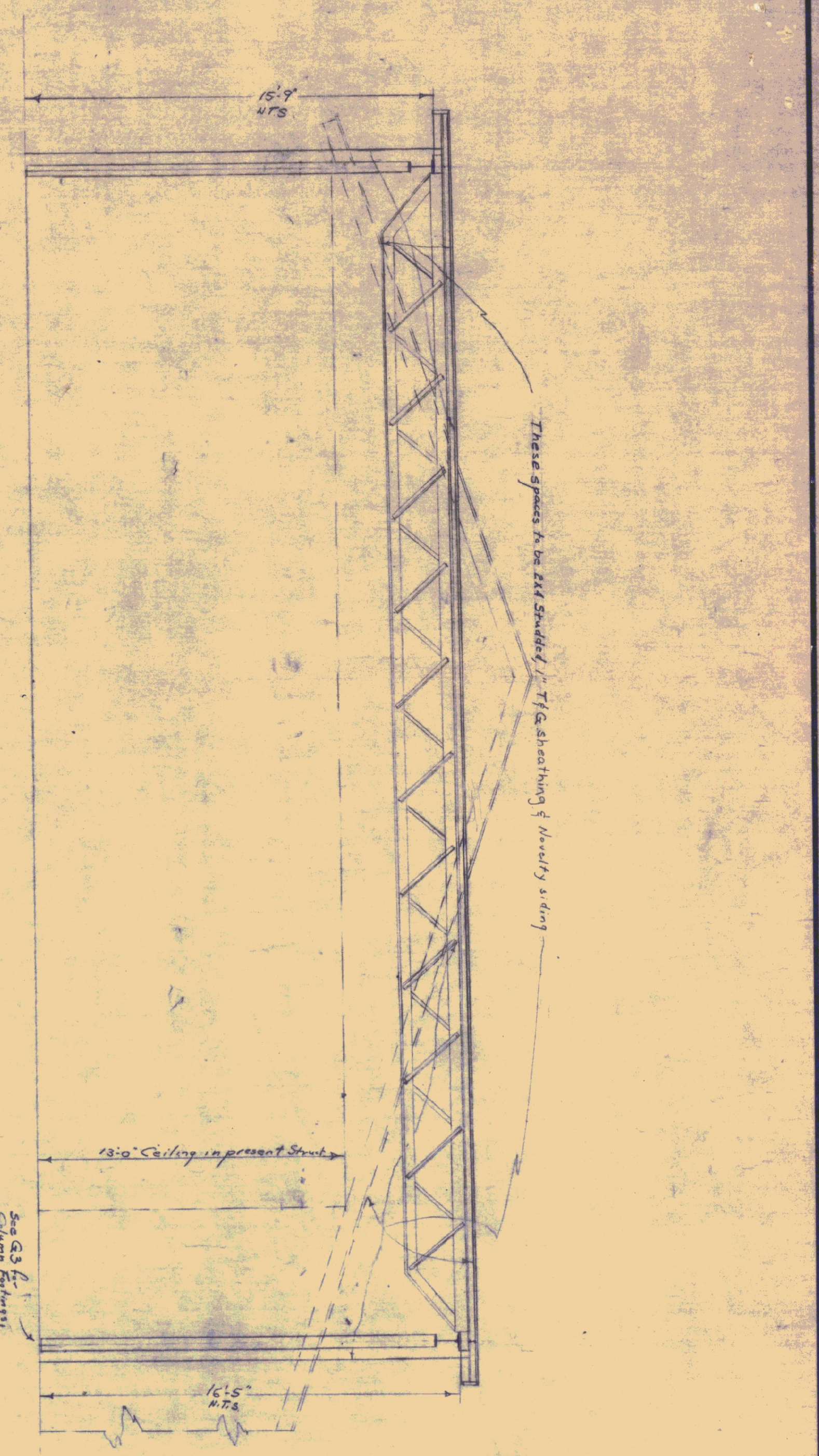


7.40



NOTE: ADEQUATE COPPER FLASHING TO BE PROVIDED WHERE BUILDINGS JOIN.

ELEVATION OF GARAGE AT JUNCTURE WITH PRESENT STRUCTURE

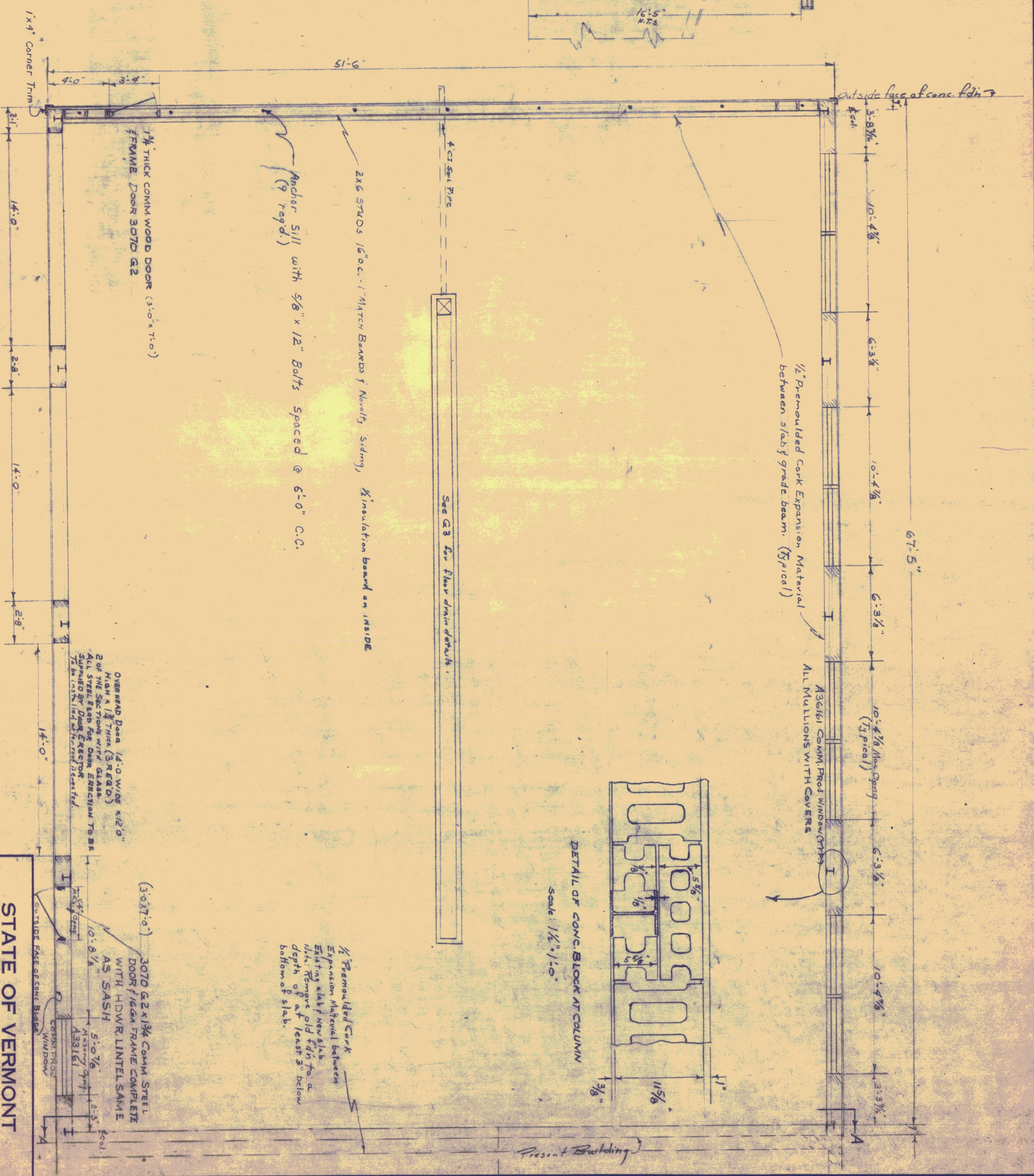
SECT. A-A

Scale 1/8" = 1'-0"



SITE PLAN

Scale 1" = 30'



Approved Oct 3, 1960

Approved R.L. Gould District Engineer

Approved C.T. Pielke Chief Engineer

Corrected Oct 5, 1960

Approved E.M. Horn Bridge Engineer

Note Area within 6'-0" of Building to have 2" bitume pavement.

PLAN

Scale 1/8" = 1'

LIST OF PLANS

- G-1 PLAN & ELEV.
- G-2 ELEVATIONS
- G-3 FOUNDATION
- G-4 FRAMING PLAN
- G-5 REIN. STEEL SCHEDULE

Height dropped 2" since 10/14/60. Elevation not to scale.

Overall Dimension shown on the north wall changed from 6'-9" to 6'-7.5" 9/29/60.

STATE OF VERMONT
DEPARTMENT OF HIGHWAYS

TOWN OF BRADFORD
ROAD NO. BRIDGE NO.
DISTRICT # 7 GARAGE

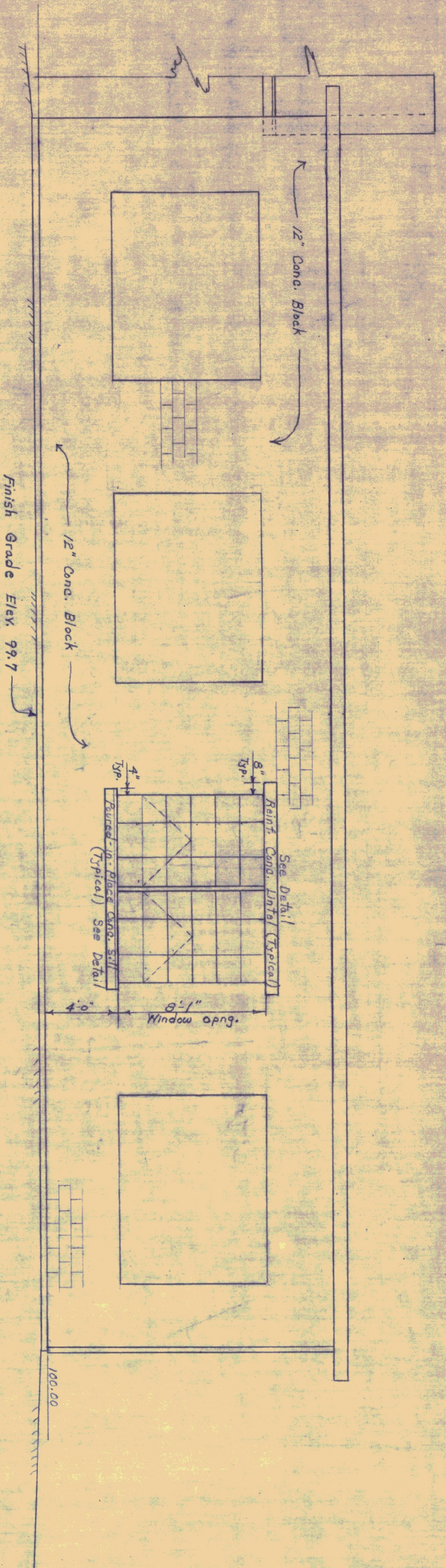
PLAN & ELEVATION

SCALE AS NOTED

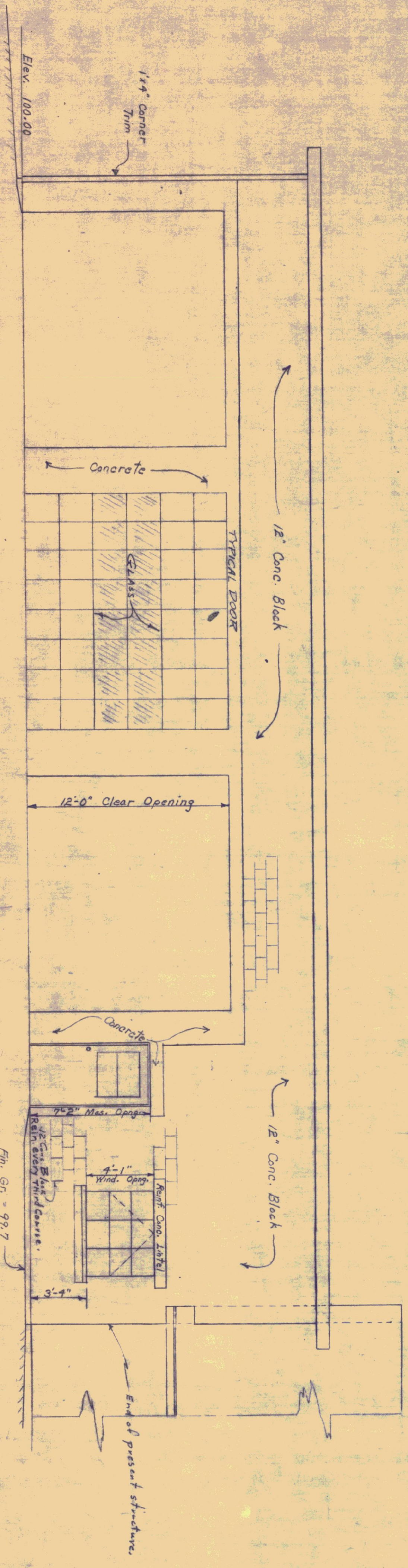
SURVEYED BY
DRAWN BY STONE
CHECKED BY E.W.C.
PROJECT NO. 4 F.M.B. 10/29/60

SHEET G-1 OF 5

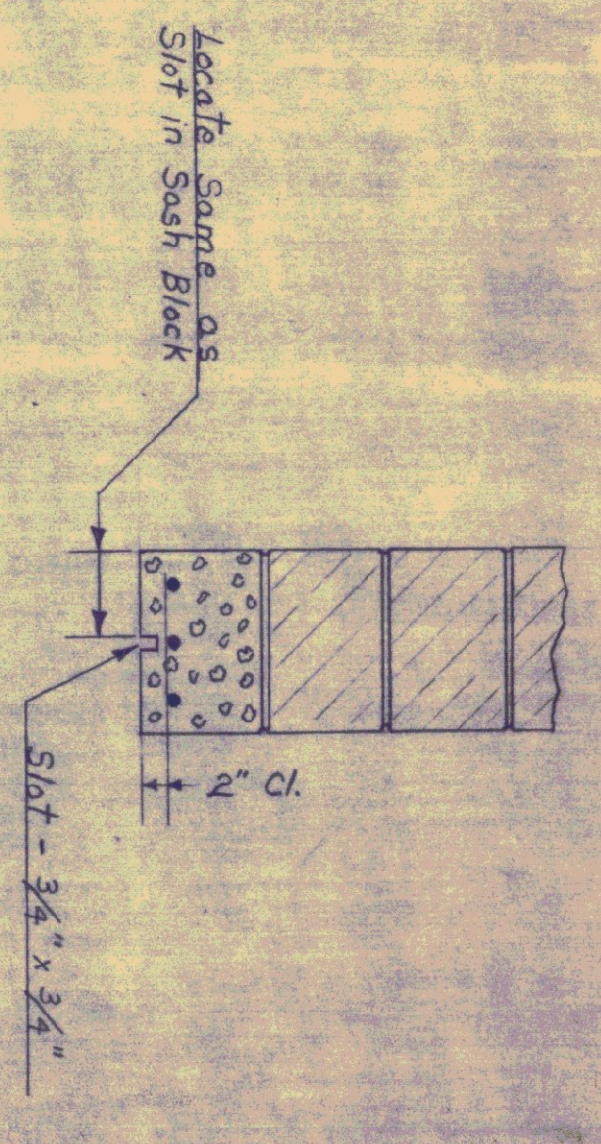
W



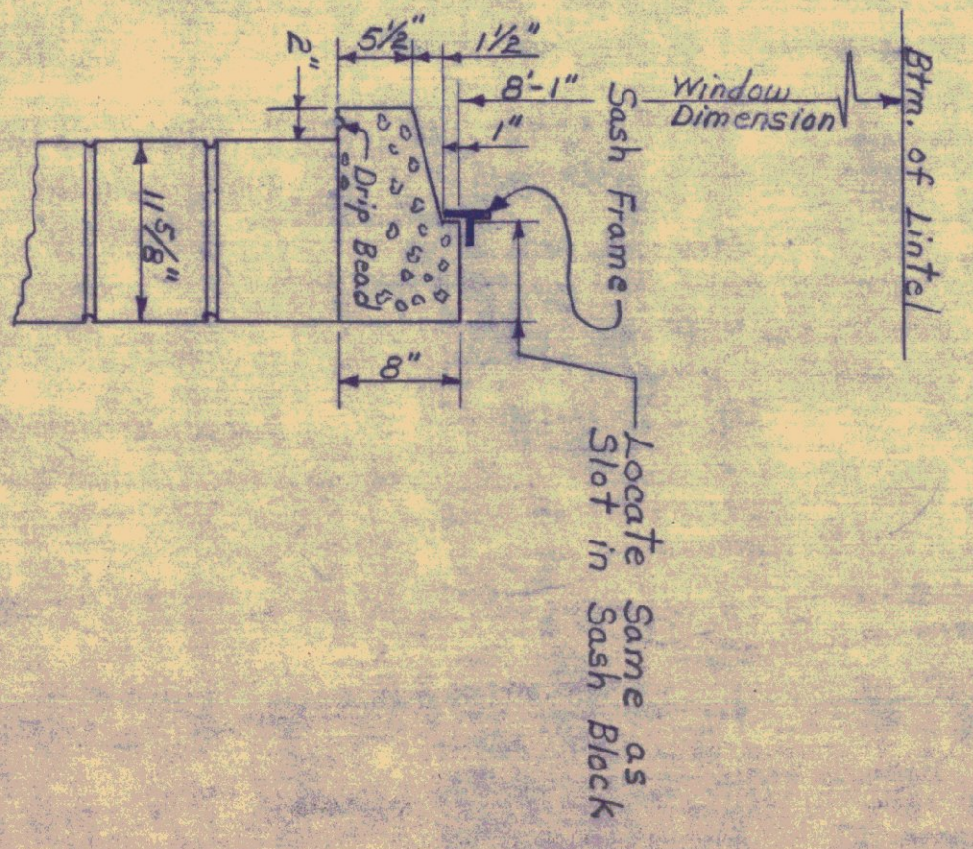
REAR ELEVATION
Scale: 1/4" = 1'-0"



FRONT ELEVATION
Scale: 1/4" = 1'-0"



LINTEL DETAIL
Scale: 1" = 1'-0"



SILL DETAIL
Scale: 1" = 1'-0"

Concrete Sill to be Poured in Place. Dimensions can be Varied Slightly to meet Field Conditions.

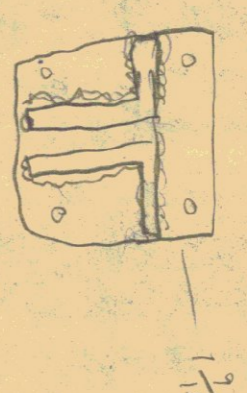
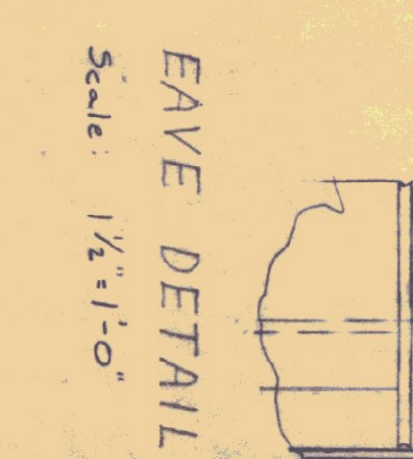
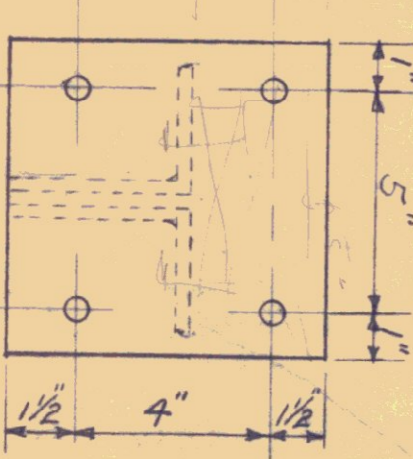
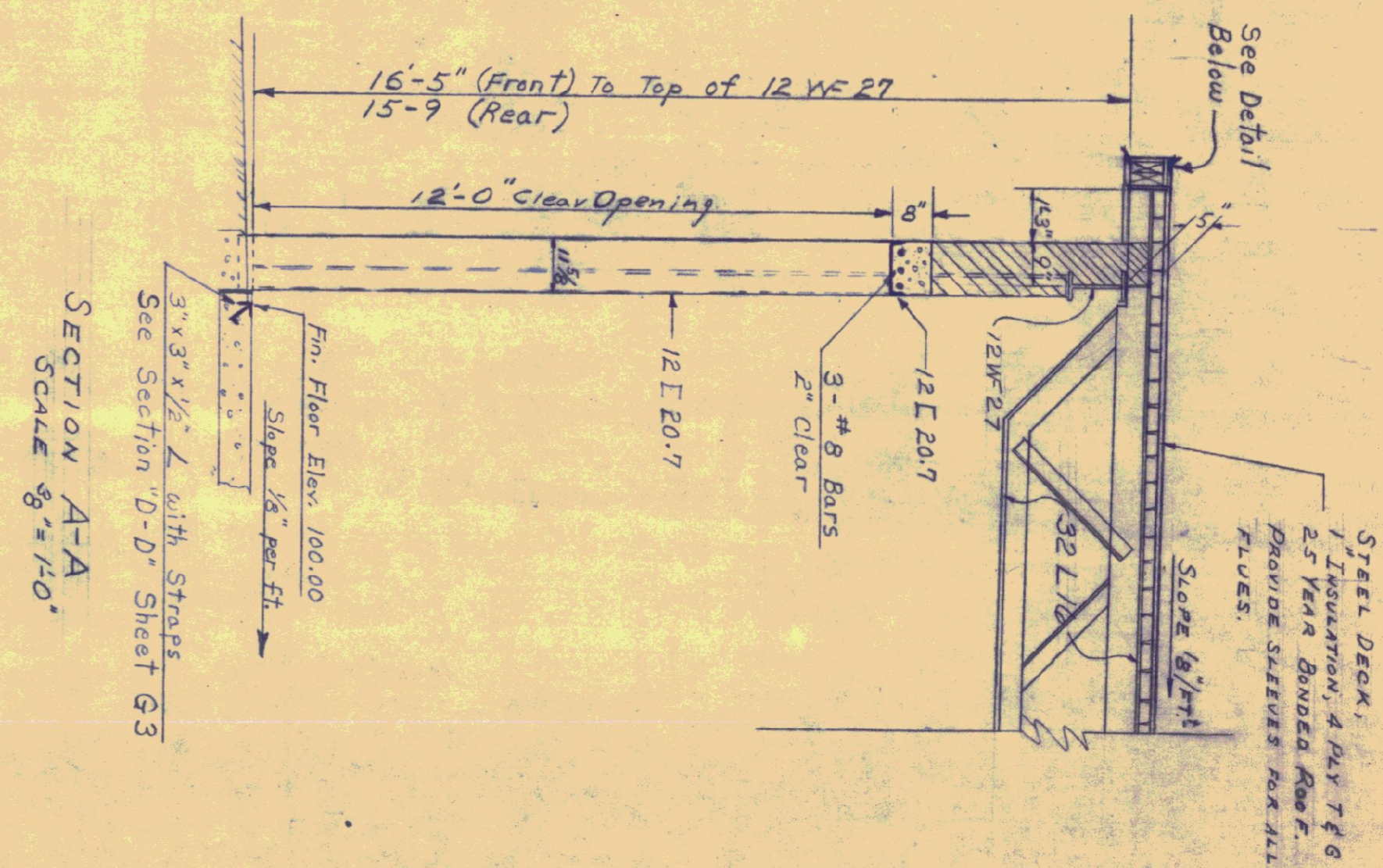
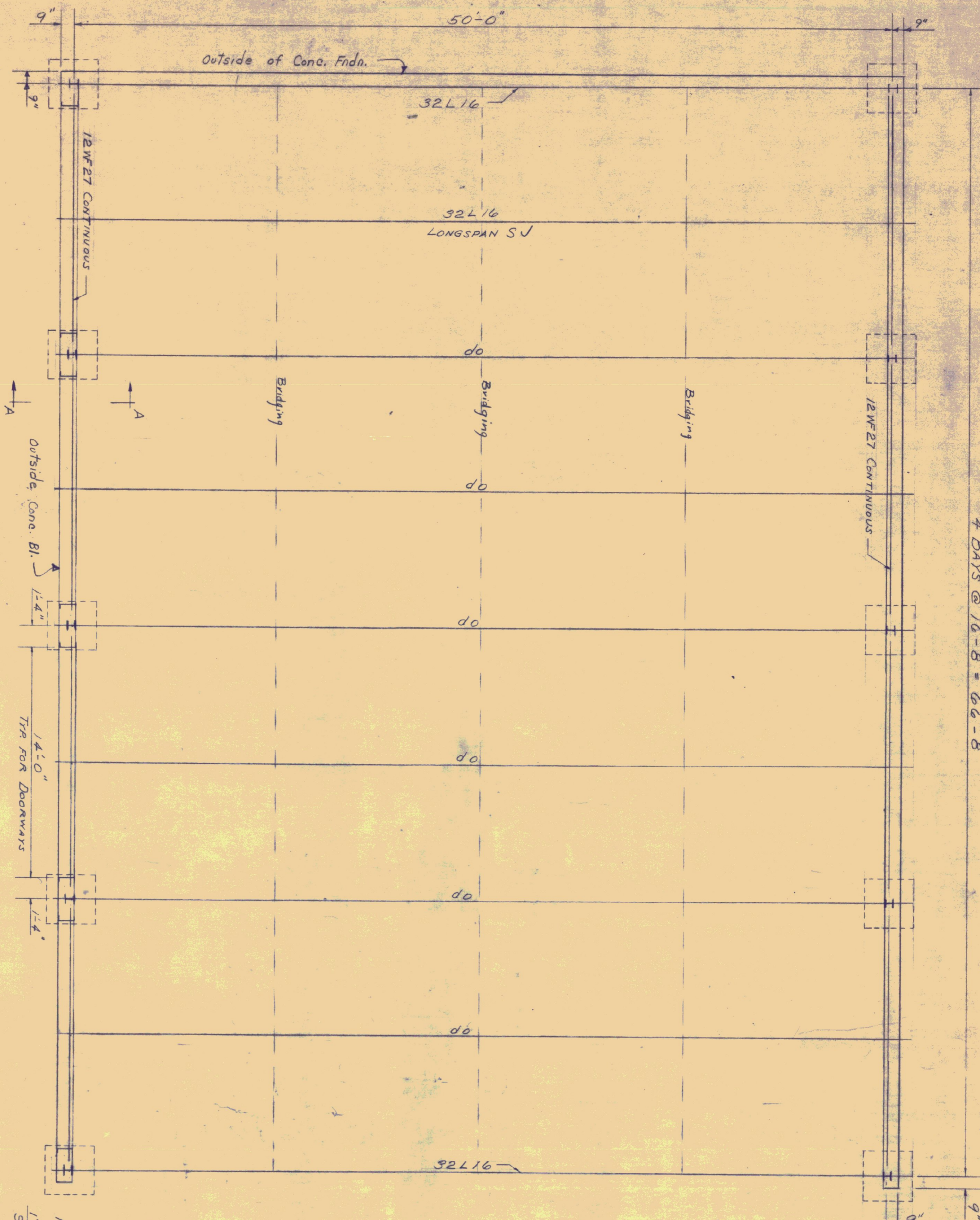
STATE OF VERMONT
DEPARTMENT OF HIGHWAYS

TOWN OF BRADFORD
ROAD NO. _____ BRIDGE NO. _____
DISTRICT # 7 GARAGE

ELEVATIONS
SCALE As Noted
SURVEYED BY Sept 1960
DRAWN BY STONE CHECKED BY F.Y.B. 10/24/60
PROJECT NO. _____
SHEET 22 OF 5

Revised Oct 21, 1960

4 BAYS @ 16'-8" = 66'-8"



Staggered 4" within (2"-2") w/d Bay.

TREATED LUMBER

STATE OF VERMONT
DEPARTMENT OF HIGHWAYS

TOWN OF BRADFORD
ROAD NO. BRIDGE NO.
DISTRICT #7 GARAGE

FRAMING PLAN
SCALE AS NOTED
Sept 1960

DRAWN BY STONE CHECKED BY FNB
PROJECT NO. @ 10/24/60
SHEET G4 OF 5

Revised Oct 21, 1960