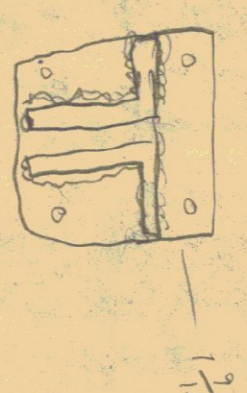
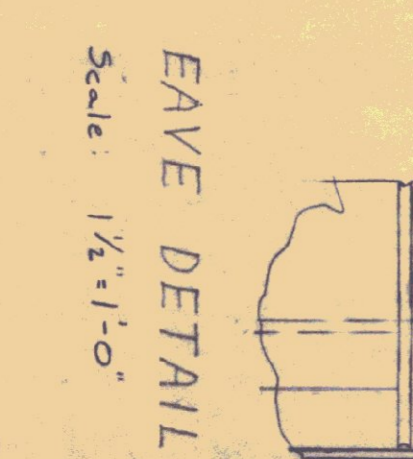
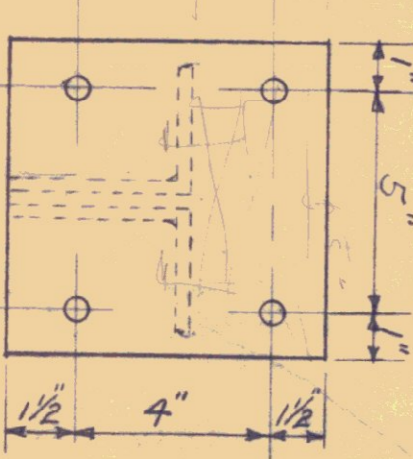
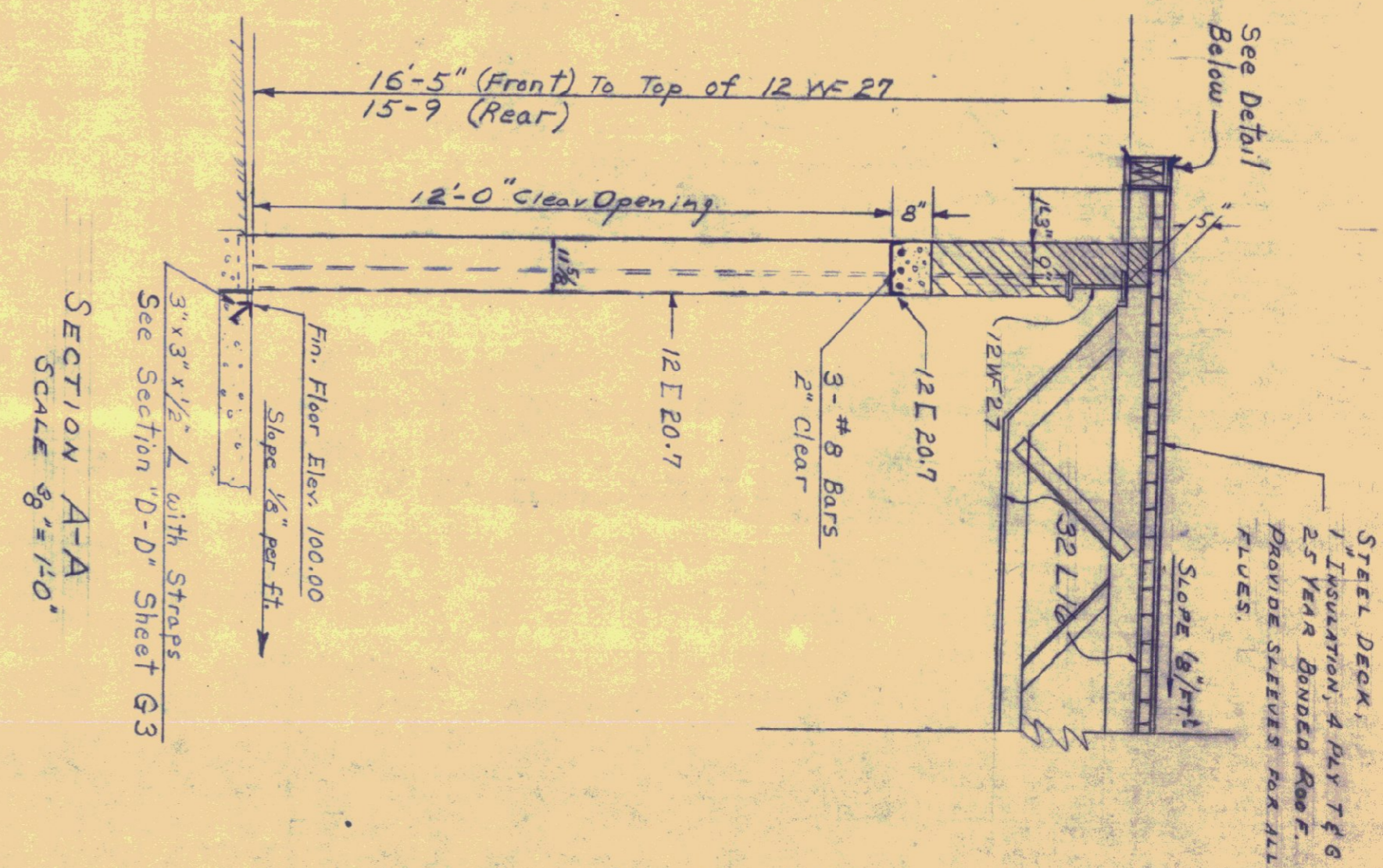
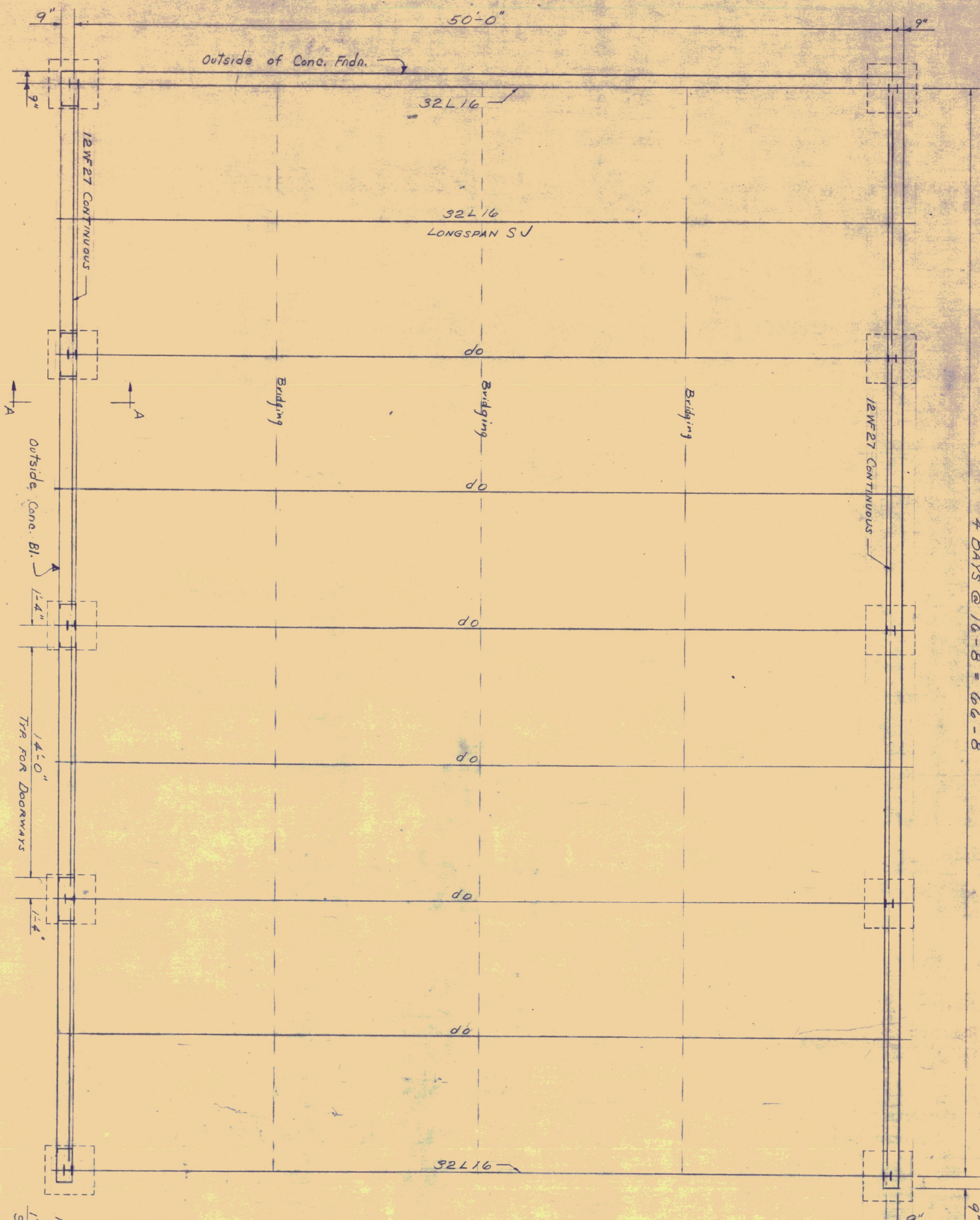


4 BAYS @ 16'-8" = 66'-8"



Staggered 4" within (2"-2") rock dry.

TREATED LUMBER

STATE OF VERMONT
DEPARTMENT OF HIGHWAYS

TOWN OF BRADFORD
ROAD NO. BRIDGE NO.
DISTRICT #7 GARAGE

FRAMING PLAN
SCALE AS NOTED
Sept 1960

DRAWN BY STONE CHECKED BY FNB
PROJECT NO. @ 10/24/60
SHEET G4 OF 5

Revised Oct 21, 1960