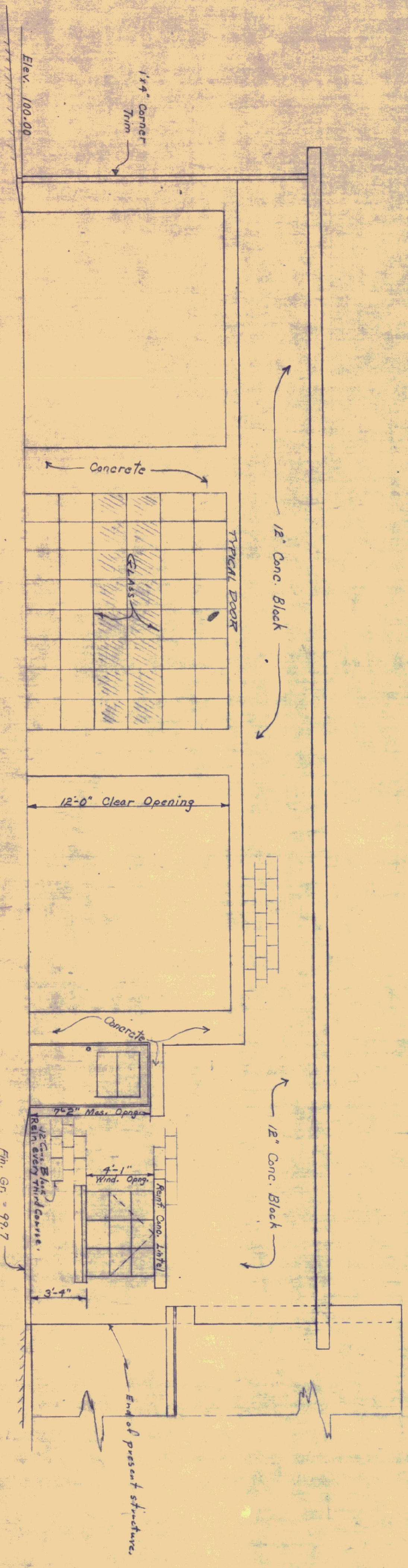
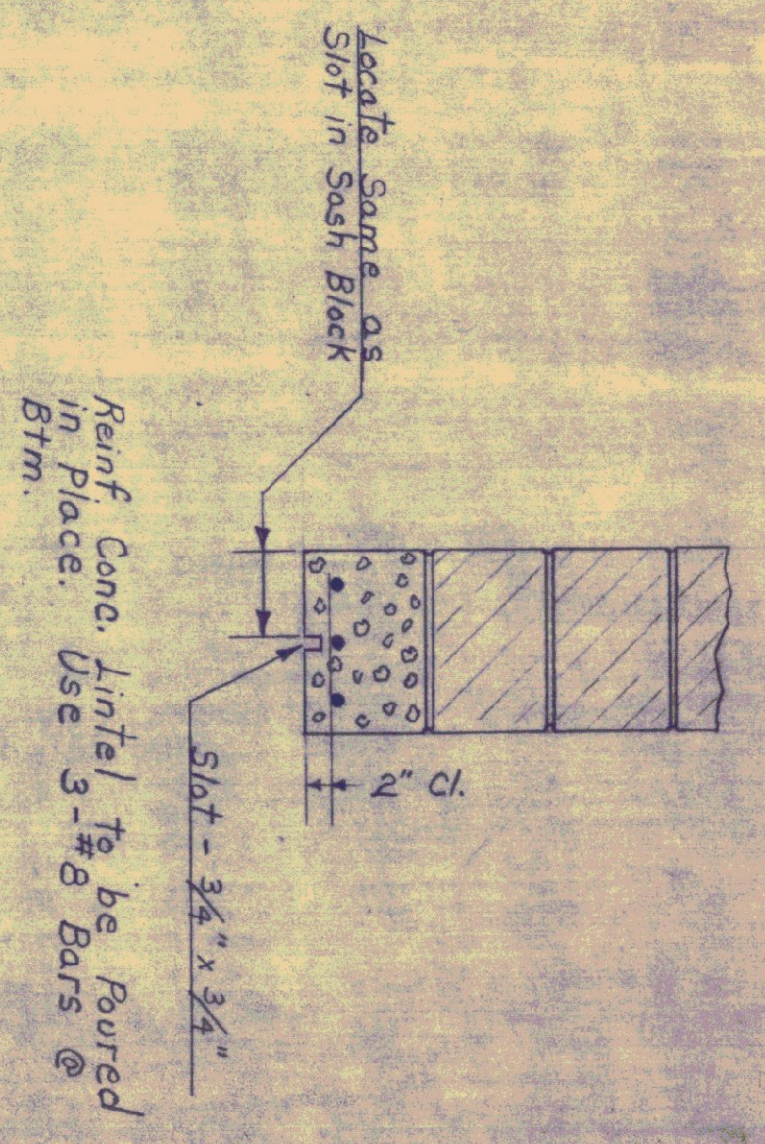


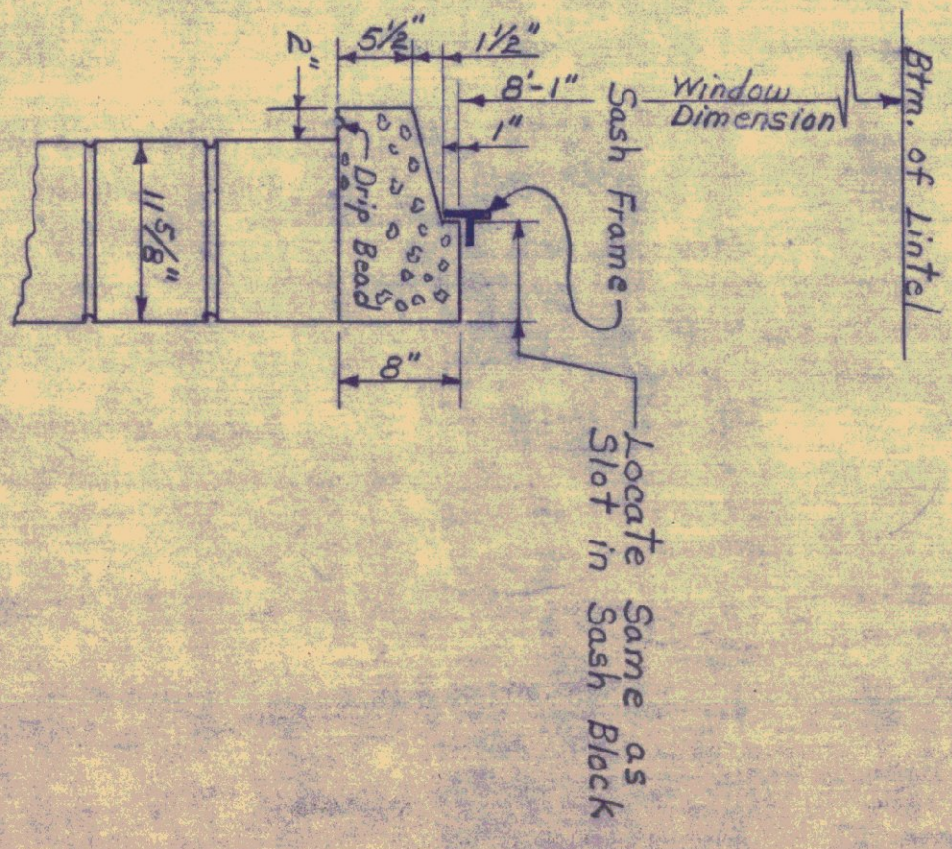
REAR ELEVATION
Scale: 1/4" = 1'-0"



FRONT ELEVATION
Scale: 1/4" = 1'-0"



LINTEL DETAIL
Scale: 1" = 1'-0"



SILL DETAIL
Scale: 1" = 1'-0"

Concrete Sill to be Poured in Place. Dimensions can be Varied Slightly to meet Field Conditions.

STATE OF VERMONT
DEPARTMENT OF HIGHWAYS

TOWN OF BRADFORD
ROAD NO. _____ BRIDGE NO. _____
DISTRICT # 7 GARAGE

ELEVATIONS
SCALE As Noted
SURVEYED BY Sept 1960
DRAWN BY STONE CHECKED BY F.Y.B. 10/24/60
PROJECT NO. _____
SHEET 22 OF 5

Revised Oct 21, 1960