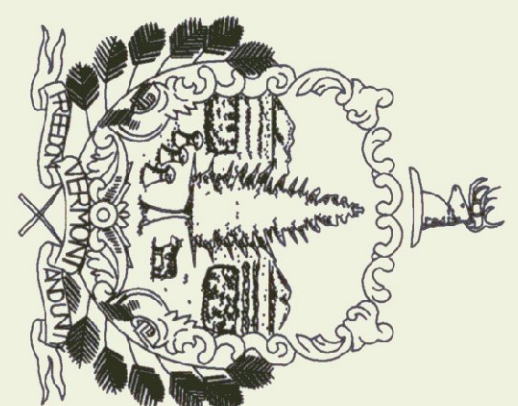


State of Vermont
 Department of Buildings & General Services
BRADFORD STATE HIGHWAY GARAGE
 PROPOSED IMPROVEMENTS TO
 FLOOR DRAIN & SANITARY SEWER CONNECTION
 BRADFORD, VERMONT

AGENCY OF ADMINISTRATION
 DEPARTMENT OF BUILDINGS & GENERAL SERVICES
 2 GOVERNOR AIKEN AVENUE
 MONTPELIER, VERMONT 05633-5801
 THOMAS W. TORTI, COMMISSIONER



James H. Douglas
 Governor

January 2003

ENGINEER: _____

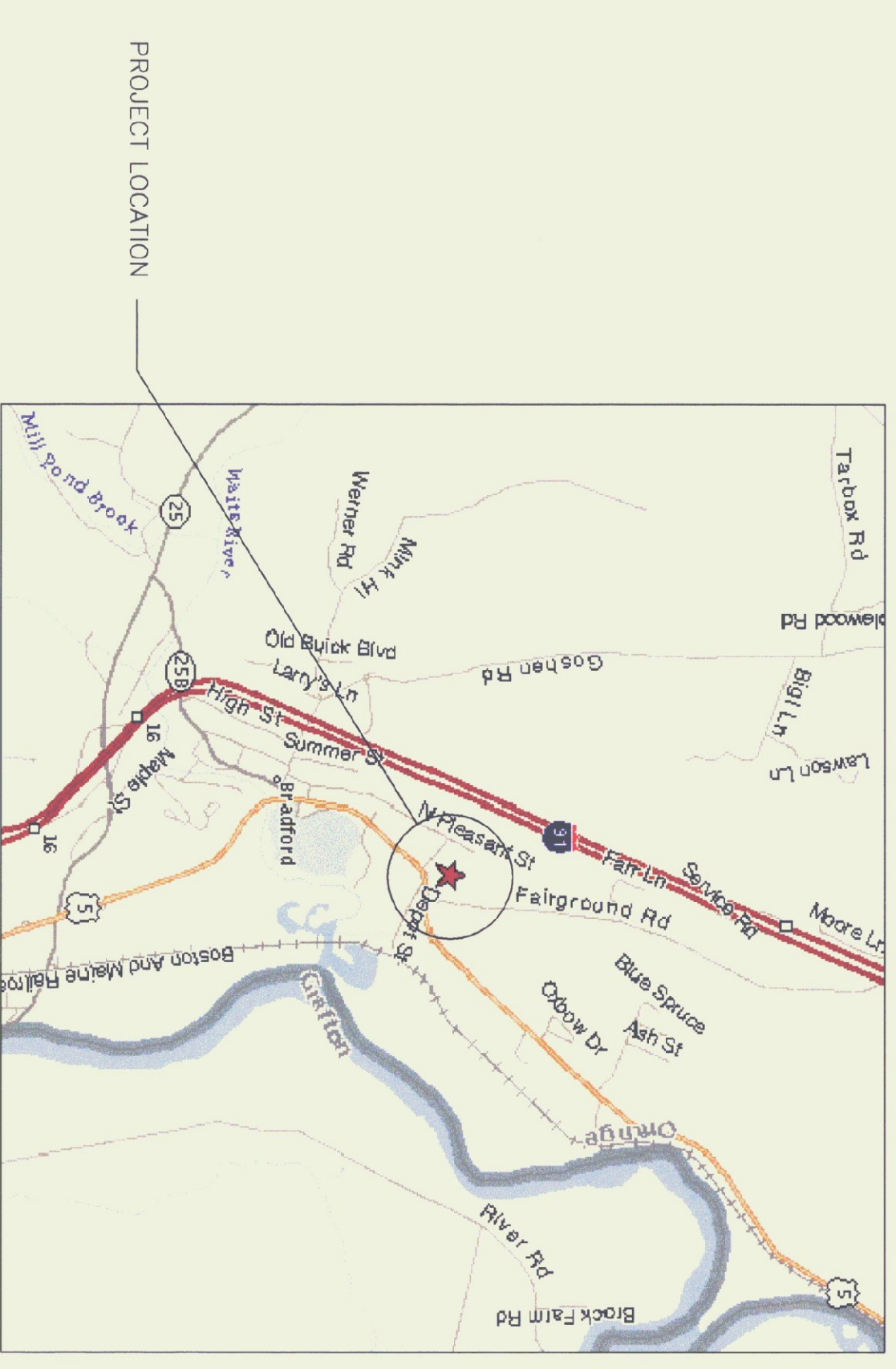
C.L.D. CONSULTING ENGINEERS
 THE CURTIS HOUSE 256 RT. 5 SOUTH
 NORWICH, VERMONT 05055
 PHONE: (802) 649-1154 FAX: (802) 649-1159

- INDEX OF SHEETS**
- 2 LAYOUT OPTION 1
 - 3 PROFILE/ DETAILS
 - 4 DETAILS
 - 5 NOTES/ DETAILS

CONVENTIONAL SYMBOLS

COUNTY LINE		COUNTY LINE	
TOWN LINE		TOWN LINE	
LIMITS OF ACCESS			
POINT OF ACCESS			
FENCE LINE			
STONE WALL			
TRAVELED WAY			
GUARD RAIL			
RAILROAD			
SURVEY LINE			
CULVERT			
POWER POLE			
TELEPHONE POLE			
TREES			
CONTROL OF ACCESS			
PROPERTY LINE			
R.O.W. TAKING LINE			
SLOPE RIGHTS		SR	
TOP OF CUT		SR	
TOE OF SLOPE		SR	

AGENCY OF TRANSPORTATION
 1 NATIONAL LIFE DRIVE DRAWER 33
 MONTPELIER, VERMONT 05633
 PATRICIA A. MCDONALD, SECRETARY



PROJECT LOCATION MAP

THESE PLANS ARE SUBJECT TO SUCH ENGINEERING CHANGES AS MAY BE REQUIRED BY THE FEDERAL HIGHWAY ADMINISTRATION OR THE DIRECTOR OF PROJECT DEVELOPMENT. CONSTRUCTION IS TO BE CARRIED ON IN ACCORDANCE WITH THESE PLANS AND THE STANDARD SPECIFICATIONS FOR THE CONSTRUCTION DATED 1990, AS APPROVED BY THE FEDERAL HIGHWAY ADMINISTRATION ON MARCH 15, 1990 FOR USE ON THIS PROJECT, INCLUDING ALL SUBSEQUENT REVISIONS AND SUCH REVISED SPECIFICATIONS AND SPECIAL PROVISIONS AS ARE INCORPORATED IN THESE PLANS.



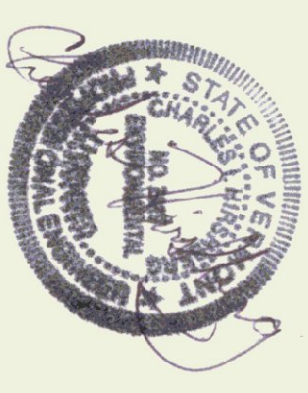
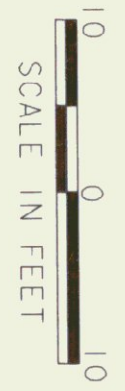
CONTRACTOR TO VERIFY SIZE & LOCATION OF EXISTING PIPE. CUT EXISTING CMP. USE EXISTING SLEEVE. INSERT 4" SDR 26 PVC THROUGH EXISTING TO NEW GRIT TRAP. SEAL W/ GROUT AROUND NEW PIPE & EXISTING "SLEEVE" ON BOTH ENDS.



TIE INTO EXISTING 8" DIA. INV. 490.5. SEE DETAIL SHEET 3. LOCATION, ELEVATION & MATERIAL TO BE VERIFIED BY CONTRACTOR.

CONCRETE SIDEWALK

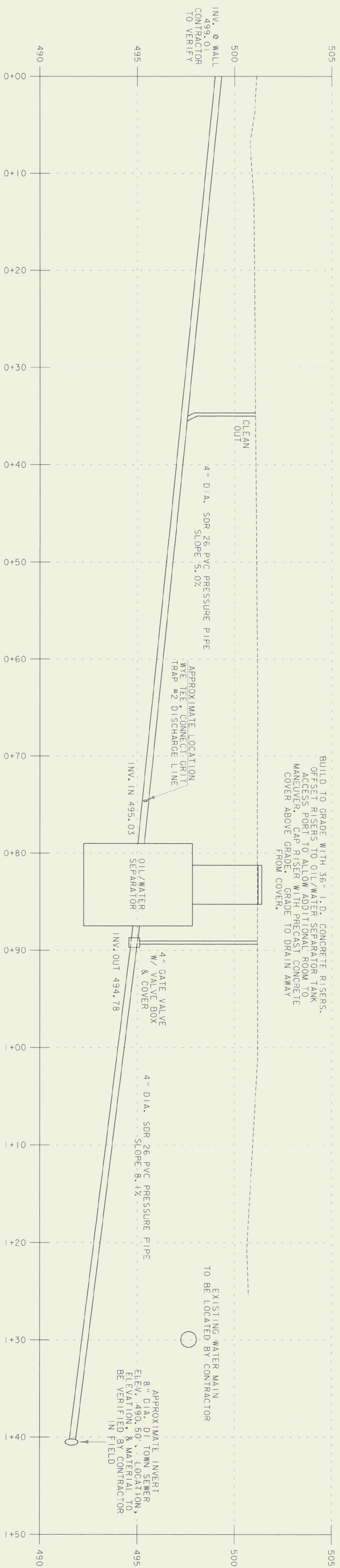
DATUM	N/A
VERTICAL	N/A
HORIZONTAL	N/A



CLD CONSULTING ENGINEERS Inc.

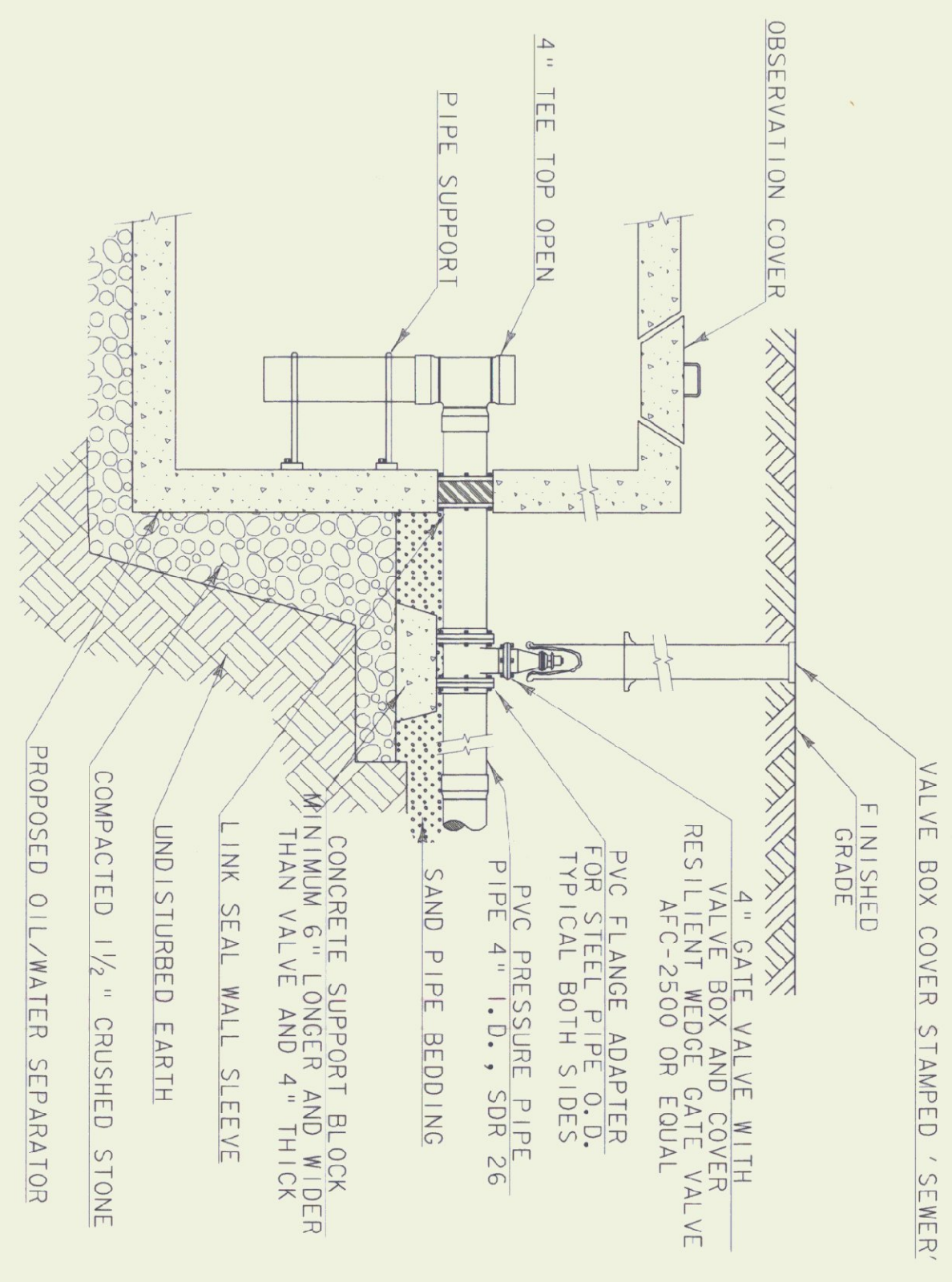
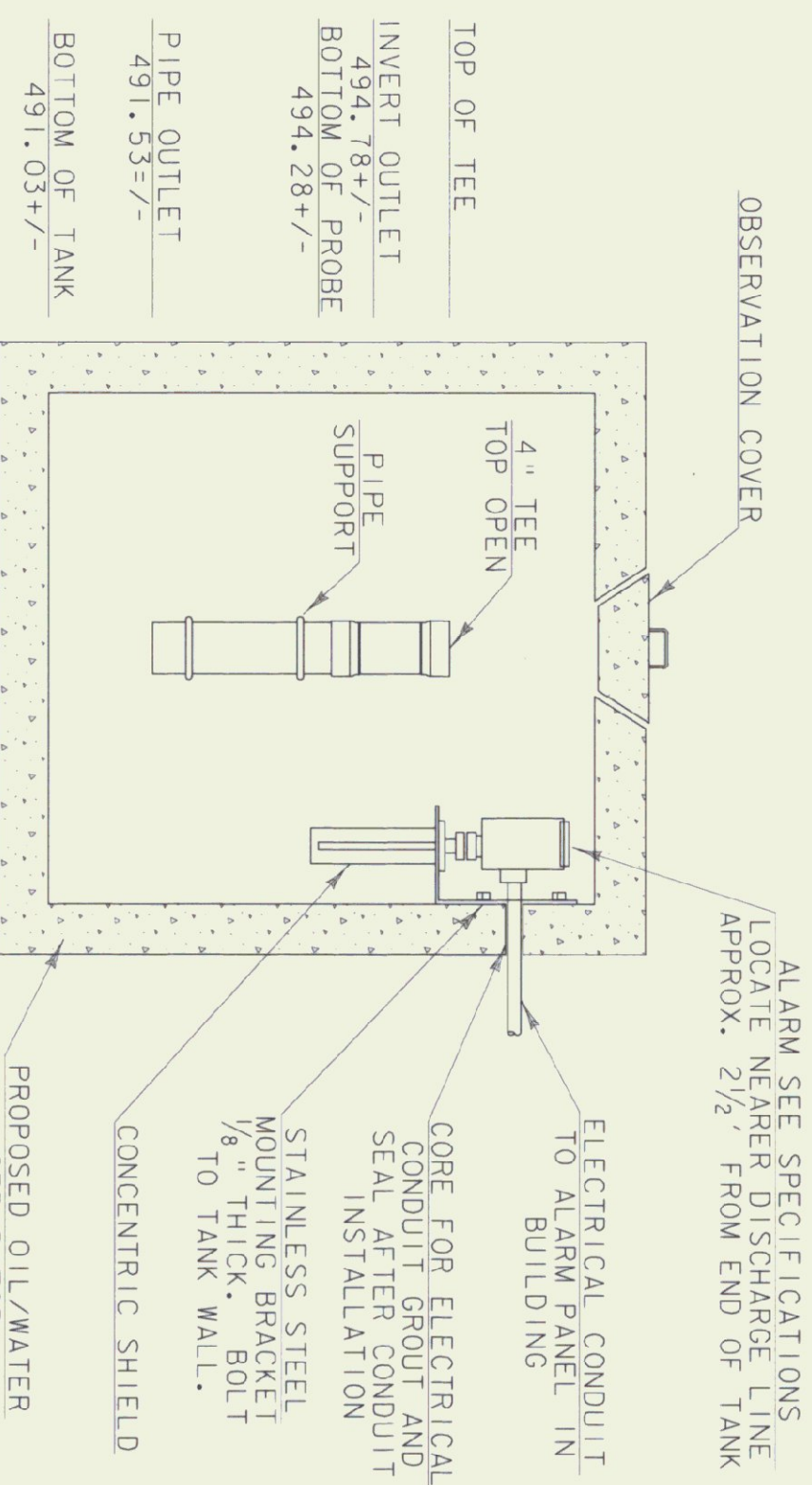
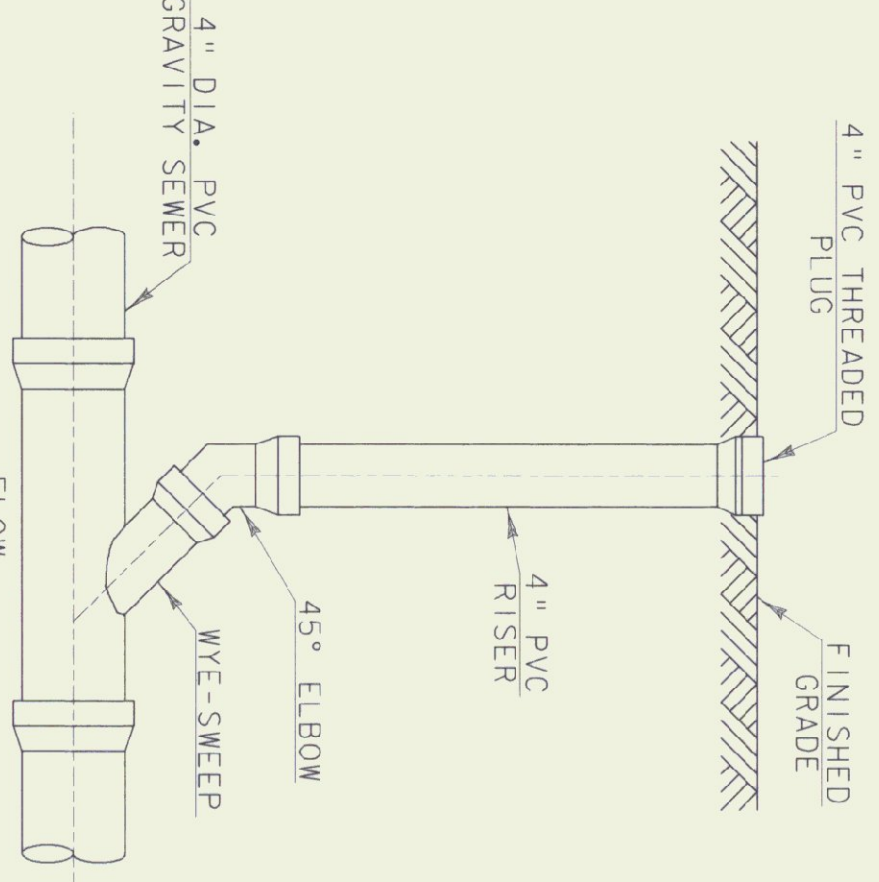
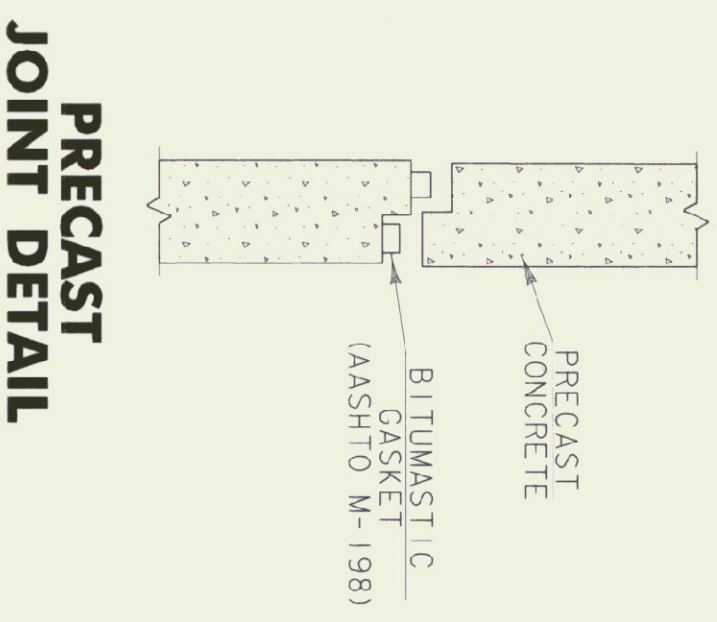
The Curtis House
 256 Route 5 South • Norwich, VT 05055
 (802) 649-1154 • Fax: (802) 649-1159
 email: cld@cldegn.com • www.cldegn.com
 Maine • New Hampshire • Vermont

PROJECT NAME:	BRADFORD STATE HIGHWAY GARAGE	PLOT DATE:	04/22/2002
PROJECT NUMBER:	00-0174	DRAWN BY:	POJ
FILE NAME:	00-0174bdr.dgn	CHECKED BY:	JMS
PROJECT LEADER:	CIH	SHEET	2 OF 5
DESIGNED BY:	JMS		
CLD REFERENCE NO.:	00-0174		



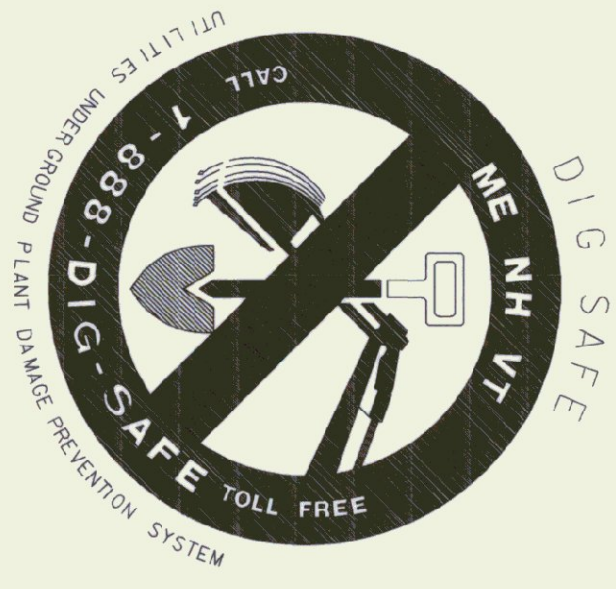
DRAIN LINE PROFILE SCALE: HORIZONTAL = 1"=5'
VERTICAL = 1"=2'

BUILD TO GRADE WITH 36" I.D. CONCRETE RISERS. OFFSET RISERS TO OIL/WATER SEPARATOR TANK ACCESS PORT TO ALLOW ADDITIONAL ROOM TO MANEUVER. CAP RISER WITH PRECAST CONCRETE COVER ABOVE GRADE. GRADE TO DRAIN AWAY FROM COVER.



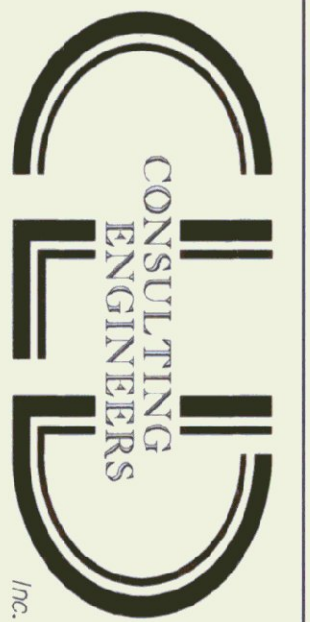
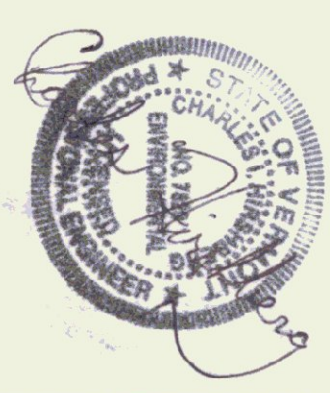
BURIED ISOLATION GATE VALVE DETAIL @ SEPARATOR

ALL DETAILS NOT TO SCALE



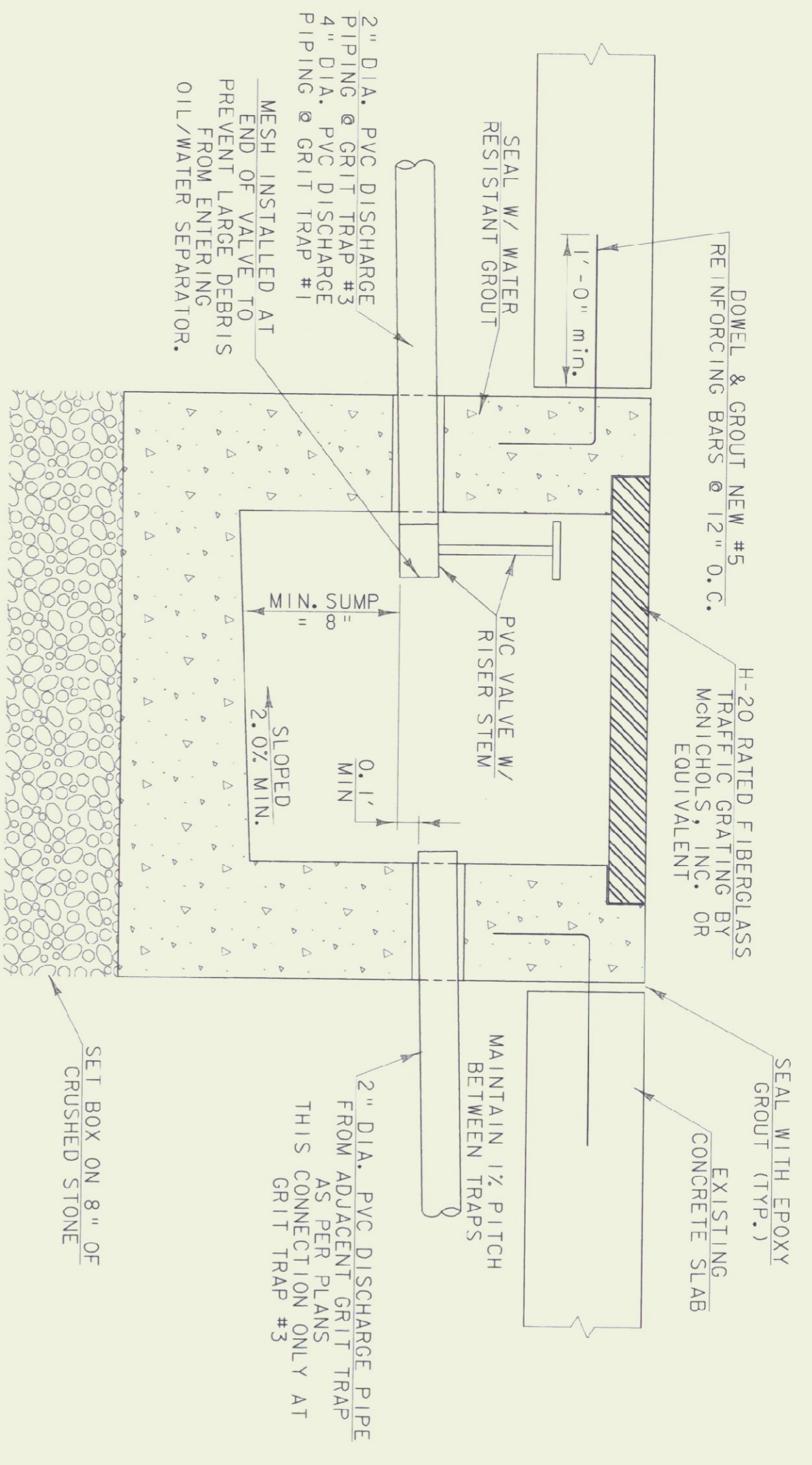
THE LOCATION OF ANY UTILITY INFORMATION FROM ANY APPROXIMATE RECORDS OR PLANS IS APPROXIMATE. CLD ENGINEERING, INC. MAKES NO CLAIM TO THE ACCURACY OR COMPLETENESS OF UTILITIES SHOWN. 72 HOURS PRIOR TO ANY EXCAVATION ON SITE, THE CONTRACTOR SHALL CONTACT DIG-SAFE AT 1-888-DIG-SAFE.

CONTACT DIG SAFE 72 HOURS PRIOR TO CONSTRUCTION



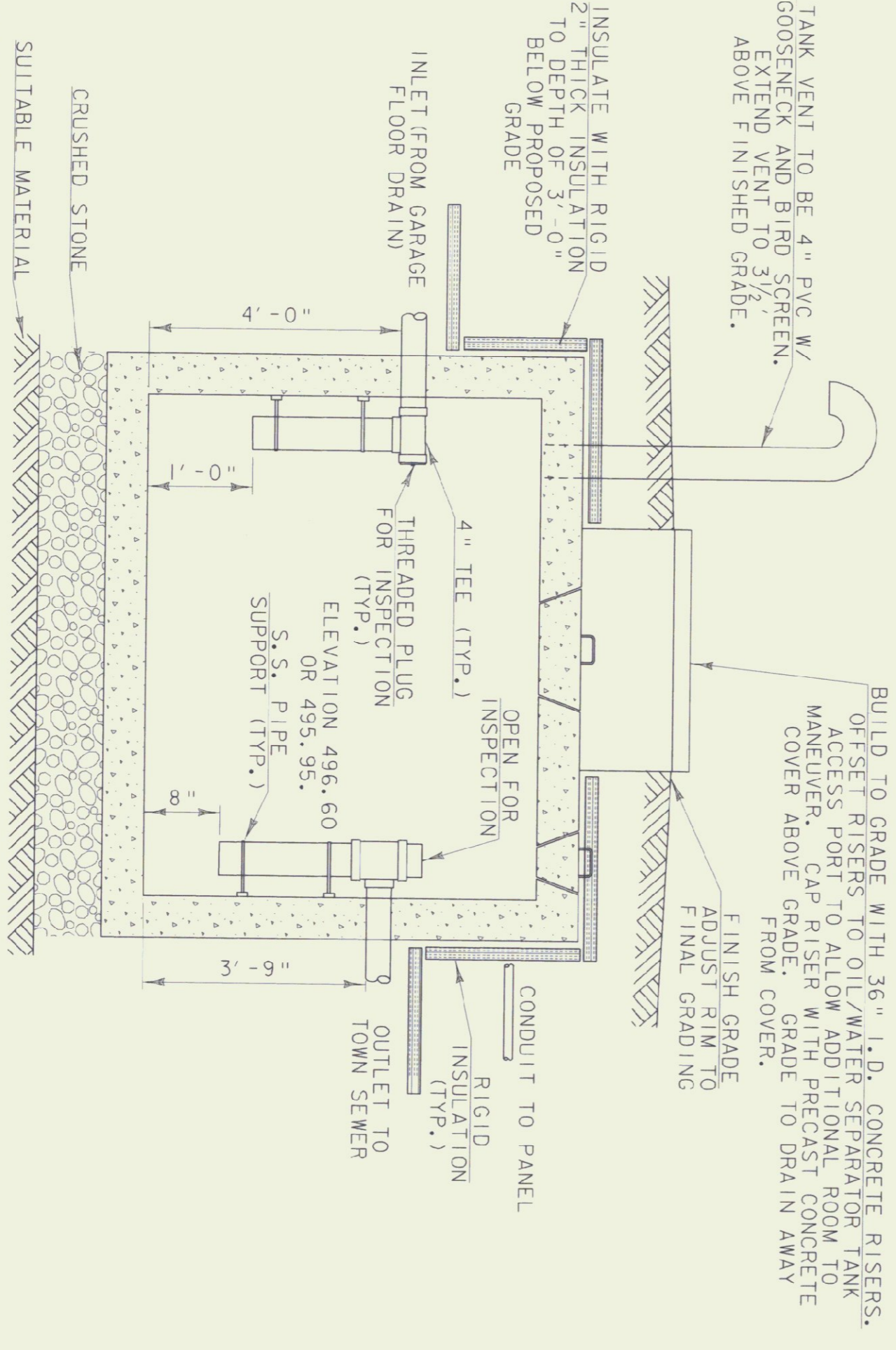
The Curtis House
256 Route 5 South • Norwich VT 05055
(802) 649-1154 • Fax: (802) 649-1159
email: cld@cldeing.com • www.cldeng.com
Maine • New Hampshire • Vermont

PROJECT NAME:	BRADFORD STATE HIGHWAY GARAGE	PLOT DATE:	04/22/2002
PROJECT NUMBER:	00-0174	DRAWN BY:	PCI
FILE NAME:	00-01740det.dgn	CHECKED BY:	JMS
PROJECT LEADER:	CIH	SHEET	3 OF 5
DESIGNED BY:	JMS		
CLD REFERENCE NO.:	00-0174		



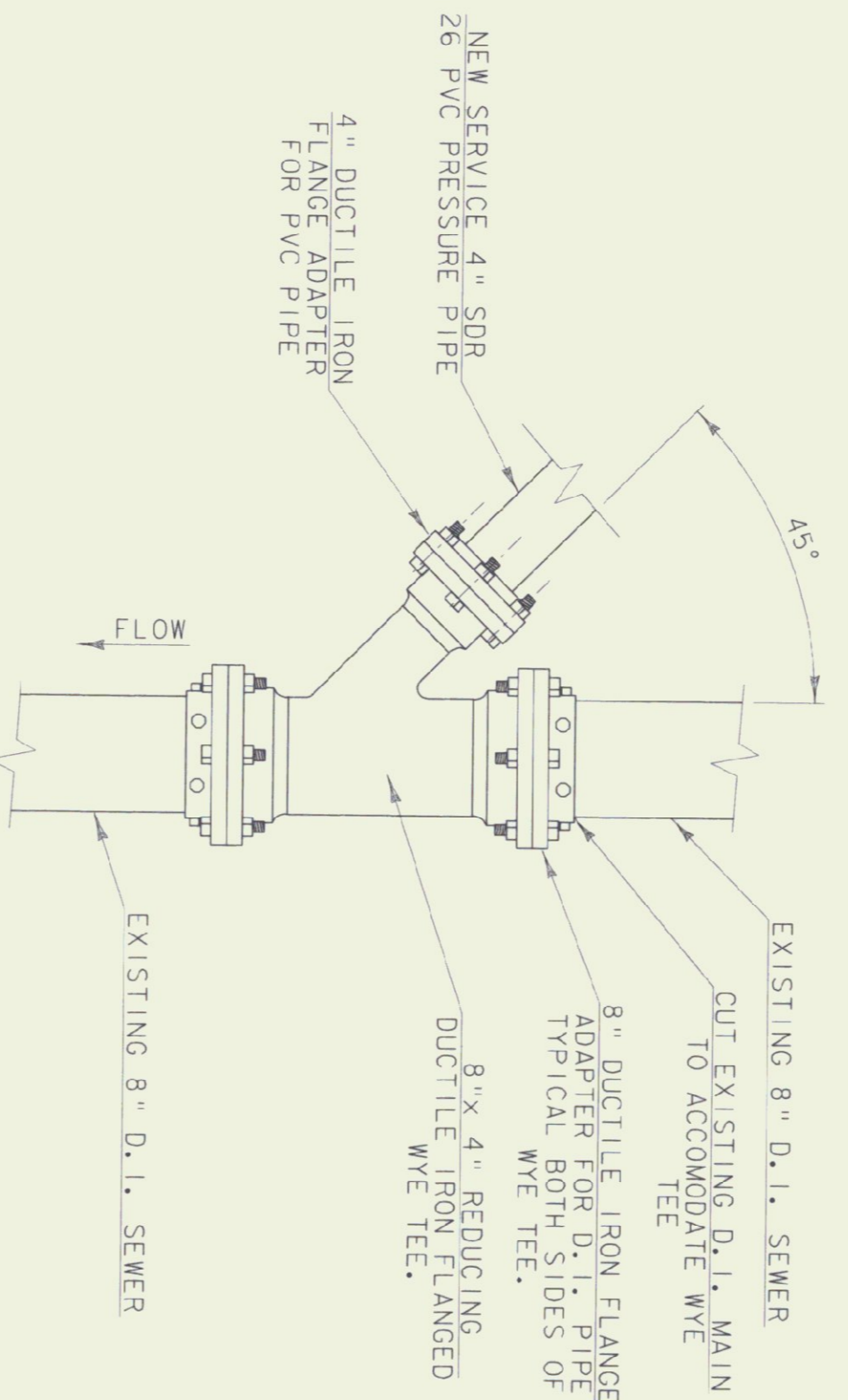
CAST-IN-PLACE FLOOR DRAIN & GRIT COLLECTION CHAMBER

1. BOX EXTERIOR WALL DIMENSIONS ARE 2'-6" LONG x 2'-2" WIDE x 2'-3" HIGH w/ 6" WALLS.
2. SAW CUT EXISTING CONCRETE SLAB. DRILL & DOWEL EXISTING SLAB. POUR CONCRETE TO MATCH EXISTING SLAB GRADE & ALLOW FOR POSITIVE DRAINAGE.
3. STEEL REINFORCEMENT PER VITRANS STANDARD D-8 REINFORCED CONCRETE DROP INLET w/ PRECAST COVER. CONTRACTOR TO ALTER STEEL LENGTHS AS NECESSARY.

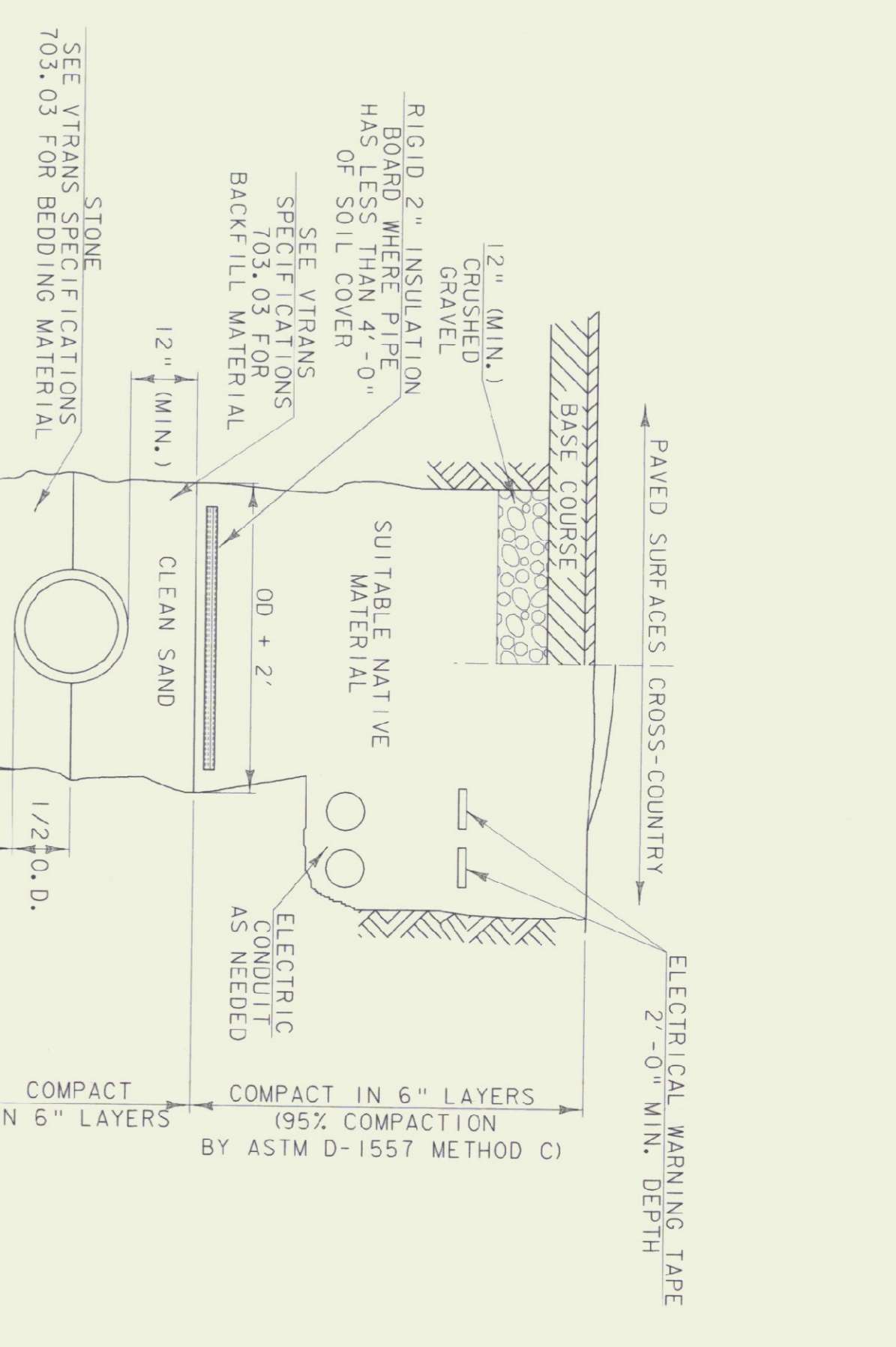


1. THE OIL SEPARATOR CHAMBER SHALL BE A 1000 GALLON SEPTIC TANK WITH CENTERED 30" OPENING AND SMALLER OUTLET ACCESS COVER. THE CONCRETE SECTIONS SHALL BE CAPABLE OF WITHSTANDING H-20 LOADING.
2. THE EXTERIOR OF THE BOX SHALL RECEIVE TWO COATS OF ASPHALTIC SEAL COATING AT THE FACTORY.
3. JOINTS BETWEEN THE CONCRETE SECTIONS SHALL BE SEALED BY BUTYL-MASTIC (AASHTO W-198).
4. THE RIGID INSULATION SHALL BE RESISTANT WITH STAINLESS STEEL VERTICAL PIPE SUPPORTS.
5. THE OIL SEPARATOR CHAMBER SHALL BE FILLED WITH WATER AND SUBJECTED TO A 24 HOUR HYDROSTATIC TEST.
6. NO LEAKAGE WILL BE ALLOWED DURING THE TEST PERIOD. IT IS THE RESPONSIBILITY OF THE CONTRACTOR TO PROVIDE A WATERIGHT STRUCTURE.
7. INTERIOR PIPING SHALL BE PVC SCH 40. FITTINGS SHALL BE SOLVENT WELD TYPE.

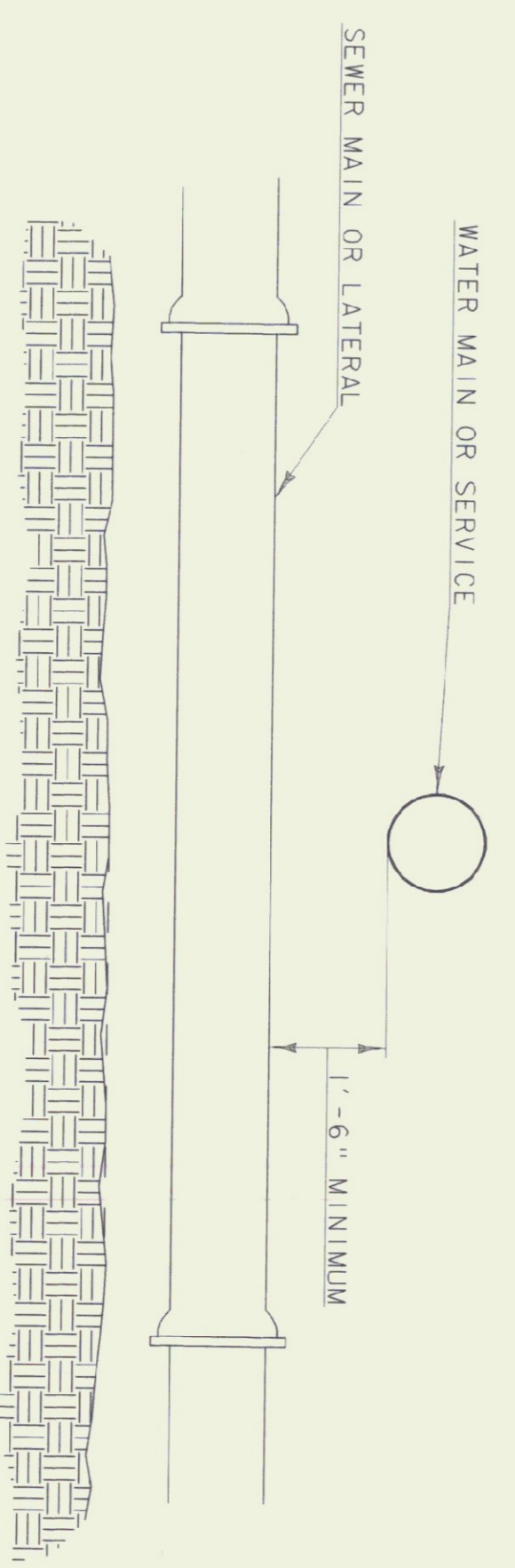
OIL SEPARATOR



SEWER SERVICE CONNECTION DETAIL



TRENCH - GENERAL DIMENSIONS (EARTH CONSTRUCTION)



WATER / SEWER SEPARATION

ALL DETAILS NOT TO SCALE



The Curtis House
 Consulting Engineers, Inc.
 200 North Main Street
 (802) 849-1521
 email: couse@curtisengineers.com • www.curtisengineers.com
 Madrie • New Hampshire • Vermont

PROJECT NAME:	BRADFORD STATE HIGHWAY GARAGE
PROJECT NUMBER:	00-0174
FILE NAME:	00-0174det1.dgn
PROJECT LEADER:	CIH
DESIGNED BY:	JMS
CHECKED BY:	JMS
CLD REFERENCE NO.:	00-0174
PLOT DATE:	04/22/2002
DRAWN BY:	PCJ
CHECKED BY:	JMS
SHEET	4 OF 5

