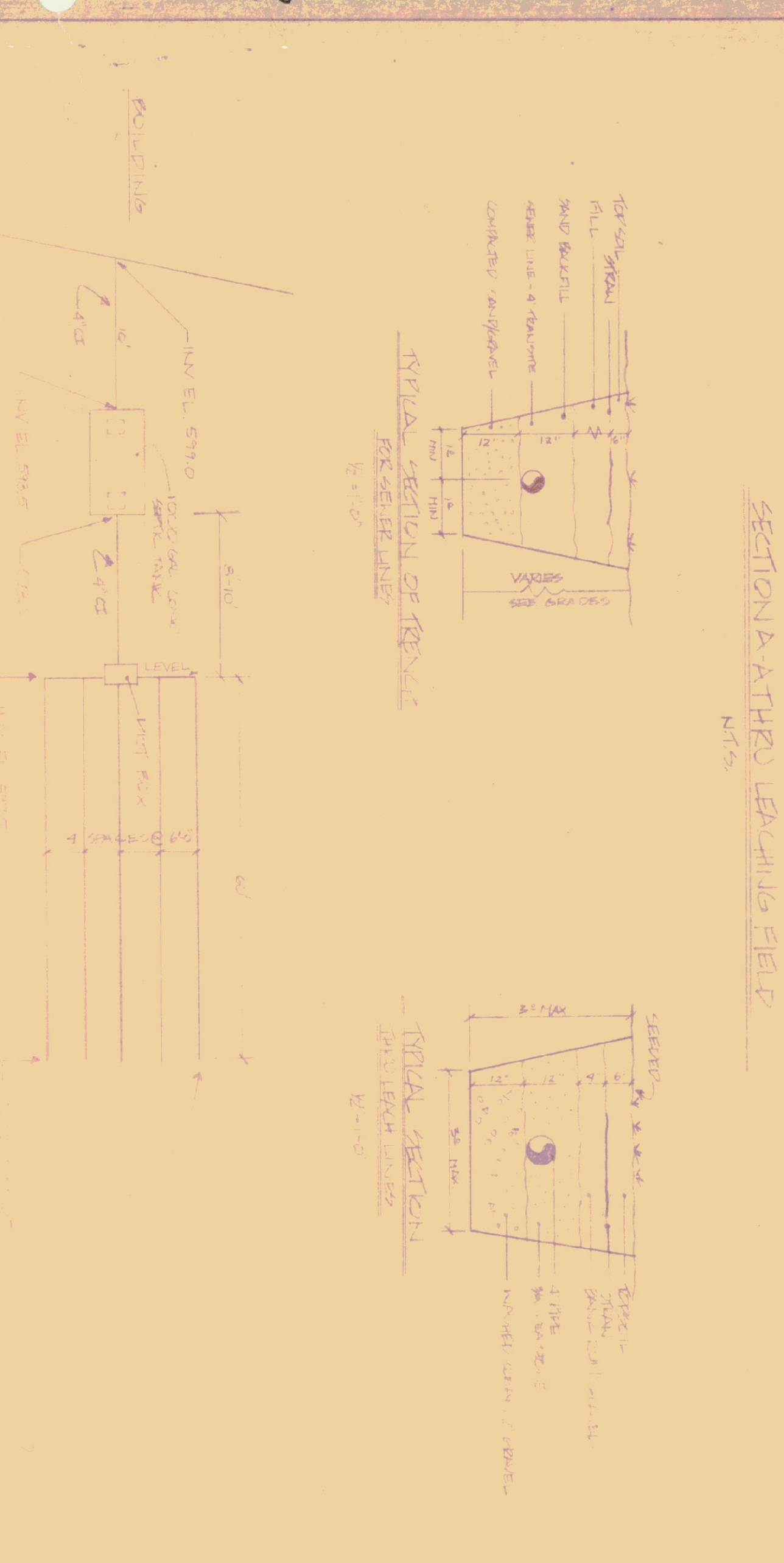


STATE OF VERMONT

PROPOSED STATE HIGHWAY MAINTENANCE GARAGE LOCATED IN NEWBURY, VERMONT



ESTIMATE OF SAVINGS PLAN

STREETS & BOYS' CLUB PARK = 16,000 HRS.
1 YEAR @ 160 HRS/WK = 52 WEEKS
TOTAL

PERCENTAGE DATA

PERCENTAGE	PERCENTAGE	PERCENTAGE	PERCENTAGE	PERCENTAGE	PERCENTAGE
100%	100%	100%	100%	100%	100%
...

PERCENTAGE TEST DATA

DATE	DEPT. IN	HOLE #1	HOLE #2
5 JUL 78	4	4	5
280 PH	4 1/2	4	4
200	4 1/2	7	7
580	4 1/2	7	7
515	4 1/2	7	7
530	2 1/2	7	7

INDEX OF DRAWINGS

DWG. NO.	TITLE
S-1	SITE PLAN
A-1	FLOOR PLAN & FOUNDATION DTLS
A-2	ELEVATIONS
A-3	WALL SECT, MISC. DTLS & DOOR SCHED
A-4	DTLS OF HEAT/BOILER CH./COIL, S.A.B.S
A-5	ROOF FRAMING PLAN & DTLS
H-1	HEATING & PLUMBING PLAN
H-2	BOILER, Q.M. & INTS
E-1	ELECTRICAL PLAN

MOR

P.A. OR

LEGEND

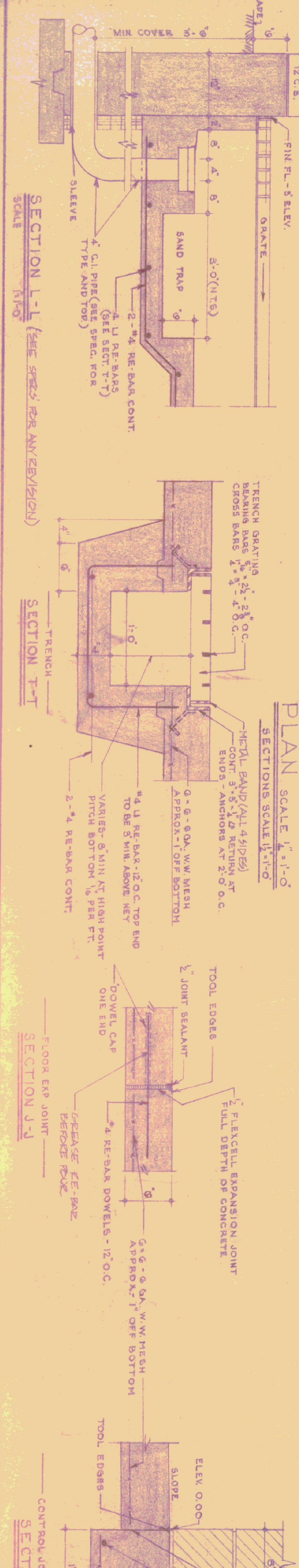
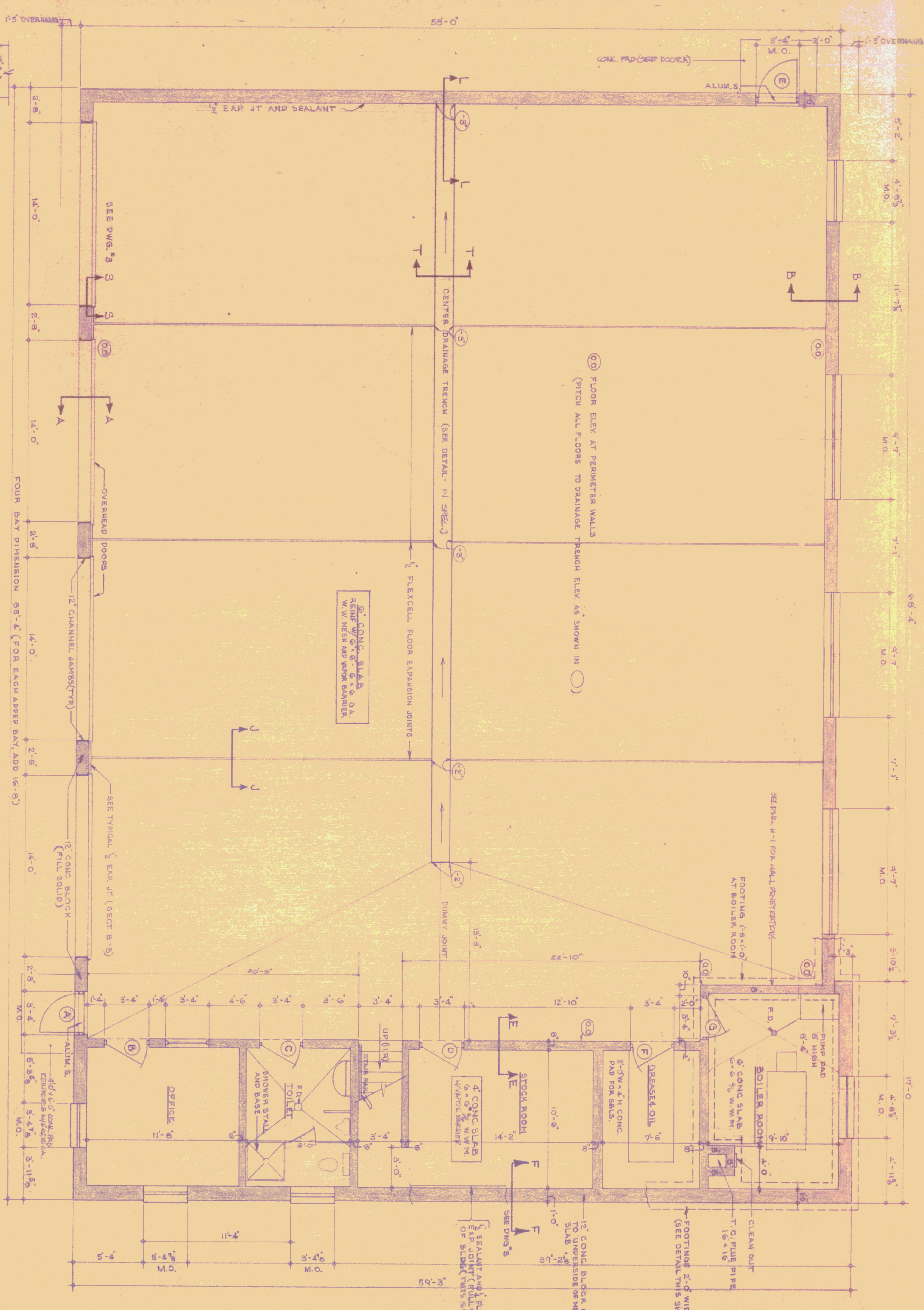
STATE OF VERMONT
DIVISION OF STATE BUILDINGS
AGENCY OF ADMINISTRATION
MONTPELIER, VERMONT

DESIGNED BY: **J.V. SEATTLE**
DRAWN BY: **R.L.H.**
APPROVED BY: **M**

DWG. NO. **5-1**
1 OF 2

GENERAL NOTES

ALL CONCRETE SHALL BE 3000 PSI AT 28 DAYS/MAX. SLUMP OF 4". ALL EXPOSED CONCRETE WALLS SHALL BE RUBBED. ALL CONSTRUCTION JOINTS FOR WALLS TO HAVE "V" JOINT IN EXPOSED FACE. ALL CONCRETE TO BE CURED, 5/8" TO BE COVERED WITH SISALKRAFT 2400 EXPANSION JOINTS TO HAVE TOOLED EDGES.



SECTION A-A
TYPICAL AT OH DOORS
2 #4 REBAR CORNERS LAP EACH FACE 8'-0" LONG WITH 3-0 LEG. T & B.
SEE SPEC & SITE PLANS FOR ELEV. & INSTALLATION OF PERIMETER DRAINS.

SECTION B-B
TYPICAL FOUNDATION FOR ALL SIDES OF BLDG, EXCEPT AT DOORS. (SEE ABOVE FOR OTHER INFORMATION)
DATE: 4-22-78
REVISION: 2

SECTION E-E
CONTROL JOINT & CONC. DETAIL
CONST. JOINT (OIL FACE)
2 #3 REBAR
CONC. 6" MIN. MESH
LEVEL
TOOL EDGES
SLOPE
ELEV. 0.00

SECTION J-J
FLOOR EXP. JOINT
FLEXCELL EXP. JOINT
FULL DEPTH OF CONCRETE
TOOL EDGES
DOWEL CAP
DOWEL ONE END
4 REBAR DOWELS - 12" O.C.
APPROX. 1" OFF BOTTOM
6" x 6" x 6" GA. W.W. MESH

SECTION L-L
SEE SPEC FOR ANY REVISION
SCALE: 1/4" = 1'-0"

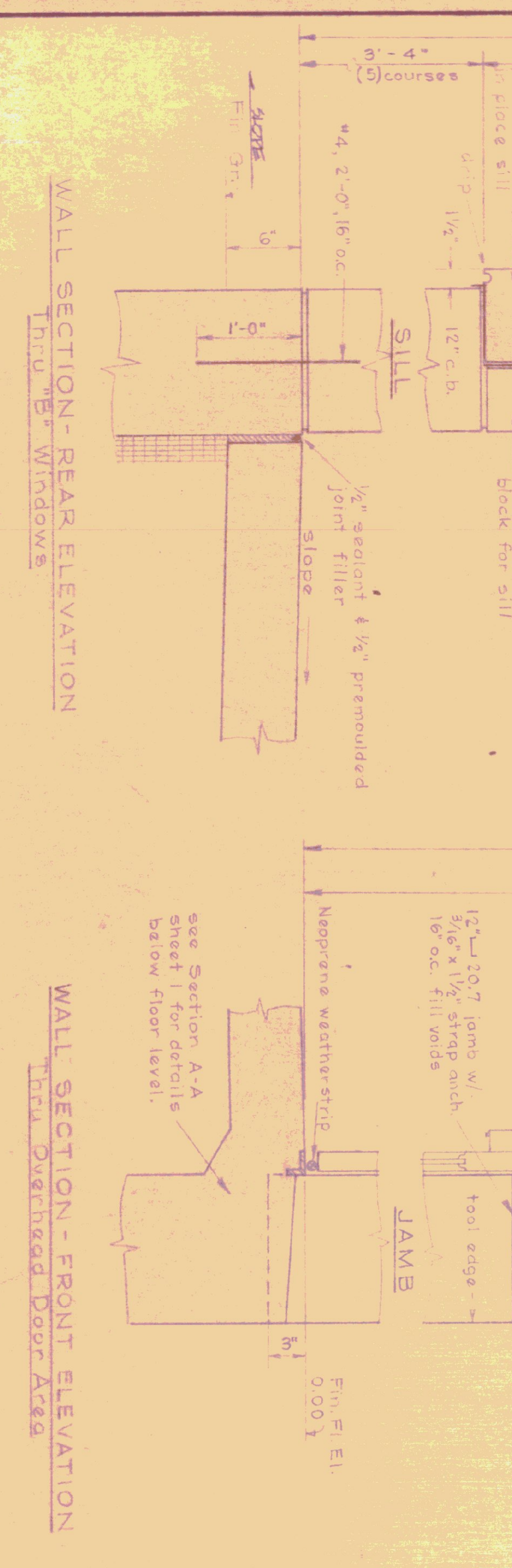
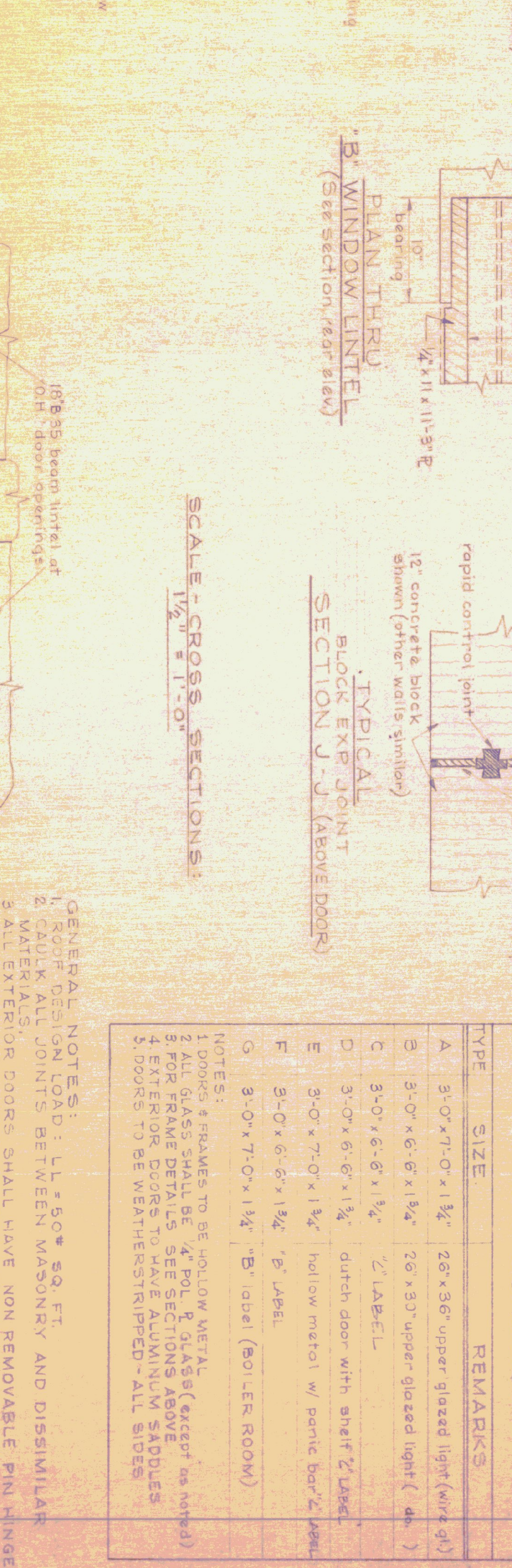
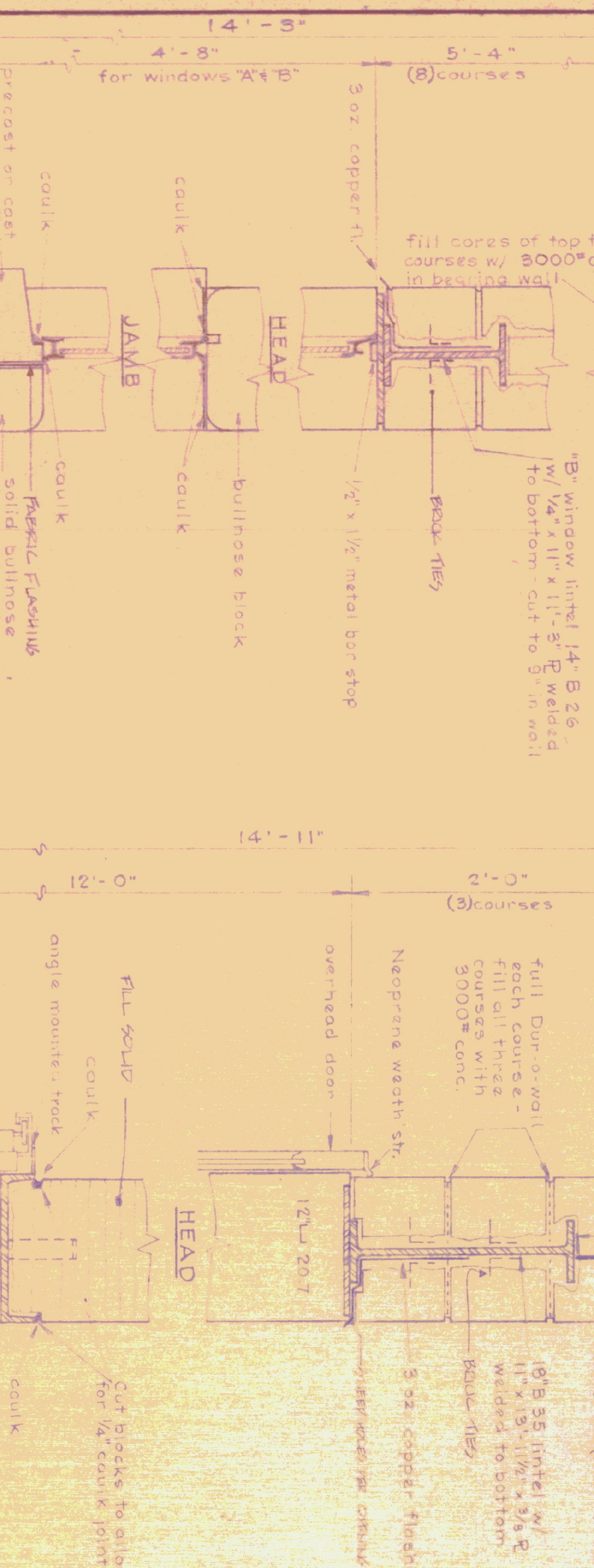
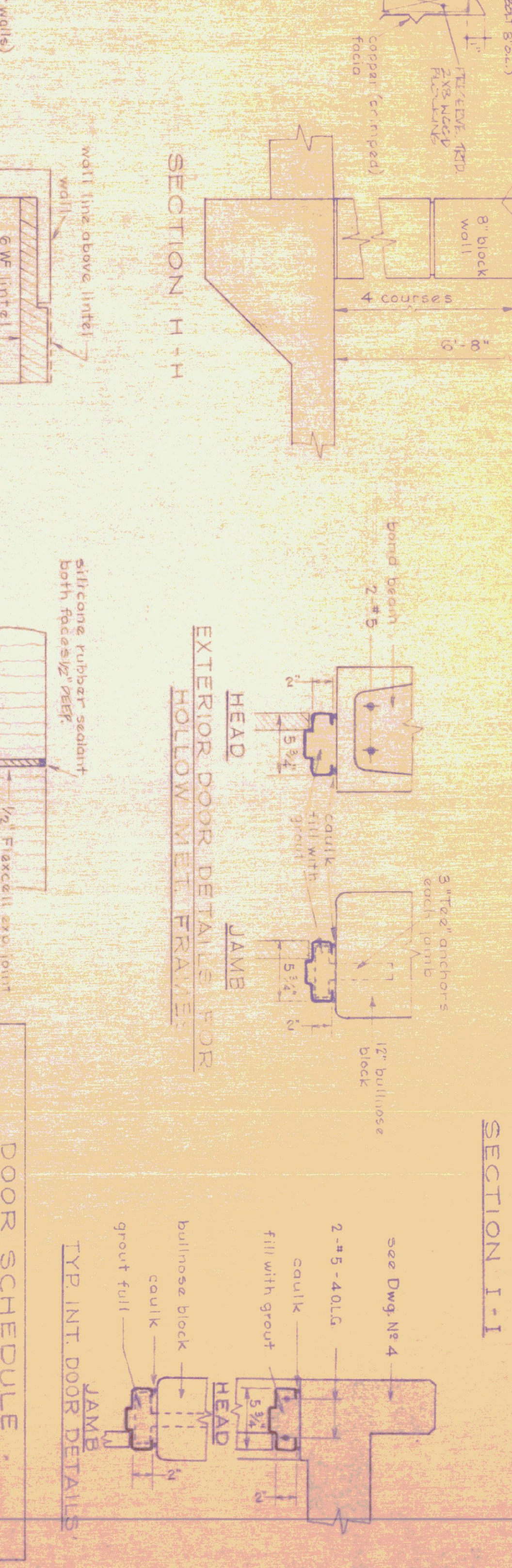
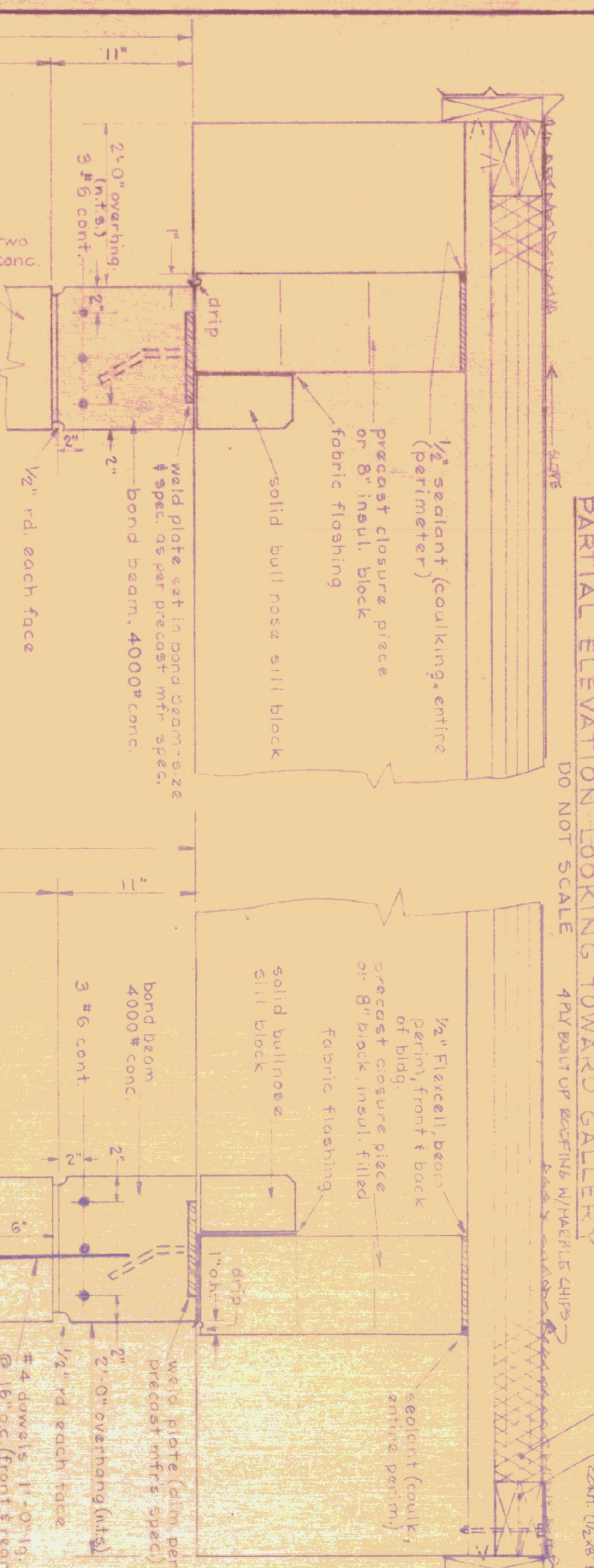
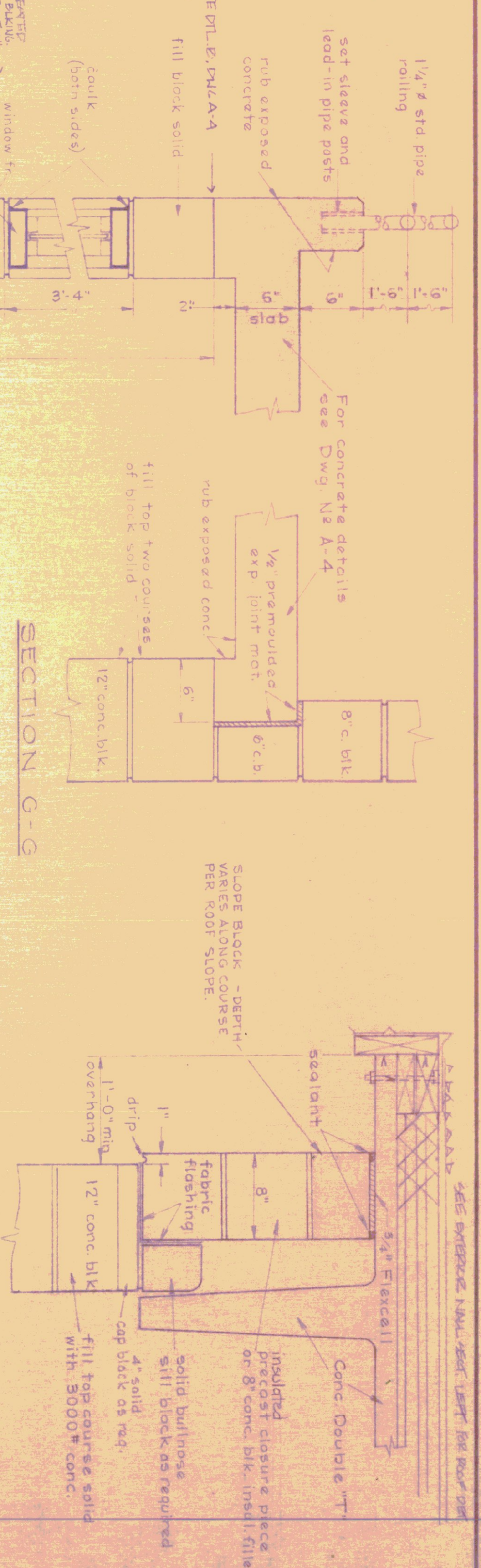
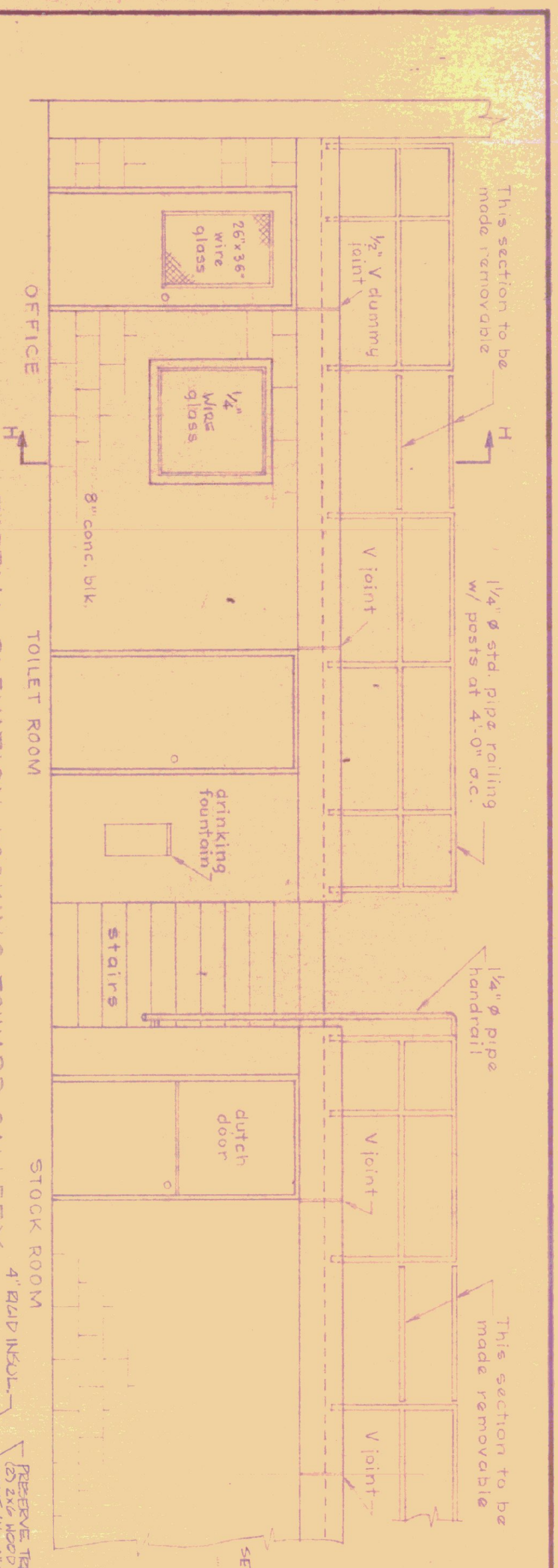
SECTION T-T
TRENCH
TRENCH GRATING
BRASSING BARS 3/8" x 2 1/2" x 2 1/2" O.C.
CROSS BARS 1/2" x 3/4" x 4'-0" O.C.
MESH BAND (ALL 4 SIDES)
COUNT 3" x 5" x 1/2" RETURN AT ENDS - ANCHORS AT 2'-0" O.C.
6" x 6" x 6" GA. W.W. MESH APPROX. 1" OFF BOTTOM
4 #4 U. REBAR - 12" O.C. TOP END TO BE 5" MIN. ABOVE KEY
VARIED - 6" MIN. AT HIGH POINT PITCH BOTTOM 1/8" PER FT.
2 #4 REBAR CONT.

PLAN
SCALE: 1/4" = 1'-0"
SECTIONS SCALE: 1/4" = 1'-0"

STATE OF VERMONT
DIVISION OF STATE BUILDINGS
AGENCY OF ADMINISTRATION
MONTPELIER, VERMONT

Standard Four Bay Highway Garage Bldg.
FLOOR, PLAN & FOUNDATION DETAILS
SCALE: As noted

DATE: 10/18/74
DRAWN BY: [Signature]
DESIGNED BY: [Signature]
APPROVED BY: [Signature]
DWG. NO.: A11



DOOR SCHEDULE

TYPE	SIZE	REMARKS
A	3'-0" x 7'-0" x 1 3/4"	26" x 36" upper glazed light (wire gl.)
B	3'-0" x 6'-6" x 1 3/4"	26" x 33" upper glazed light (do.)
C	3'-0" x 6'-6" x 1 3/4"	2" LABEL
D	3'-0" x 6'-6" x 1 3/4"	dutch door with shaft 2" LABEL
E	3'-0" x 7'-0" x 1 3/4"	hollow metal w/ pane bar 2" LABEL
F	3'-0" x 6'-6" x 1 3/4"	2" LABEL
G	3'-0" x 7'-0" x 1 3/4"	"B" label (BOILER ROOM)

NOTES:
 1. DOORS & FRAMES TO BE HOLLOW METAL
 2. ALL GLASS SHALL BE 1/4" POL. & GLASS (EXCEPT AS NOTED)
 3. FOR FRAME DETAILS SEE SECTIONS ABOVE
 4. EXTERIOR DOORS TO HAVE ALUMINUM SADDLES
 5. DOORS TO BE WEATHERSTRIPPED - ALL SIDES

- GENERAL NOTES:**
1. ROOF DESIGN LOAD: LL = 60* SQ. FT.
 2. CAULK ALL JOINTS BETWEEN MASONRY AND DISSIMILAR MATERIALS.
 3. ALL EXTERIOR DOORS SHALL HAVE NON REMOVABLE PIN HINGES
 4. PRECAST DOUBLE-TIE ROOF BEAMS ARE NOT TO BE PAINTED.

STATE OF VERMONT
DIVISION OF STATE BUILDINGS
 AGENCY OF ADMINISTRATION
 VERMONT

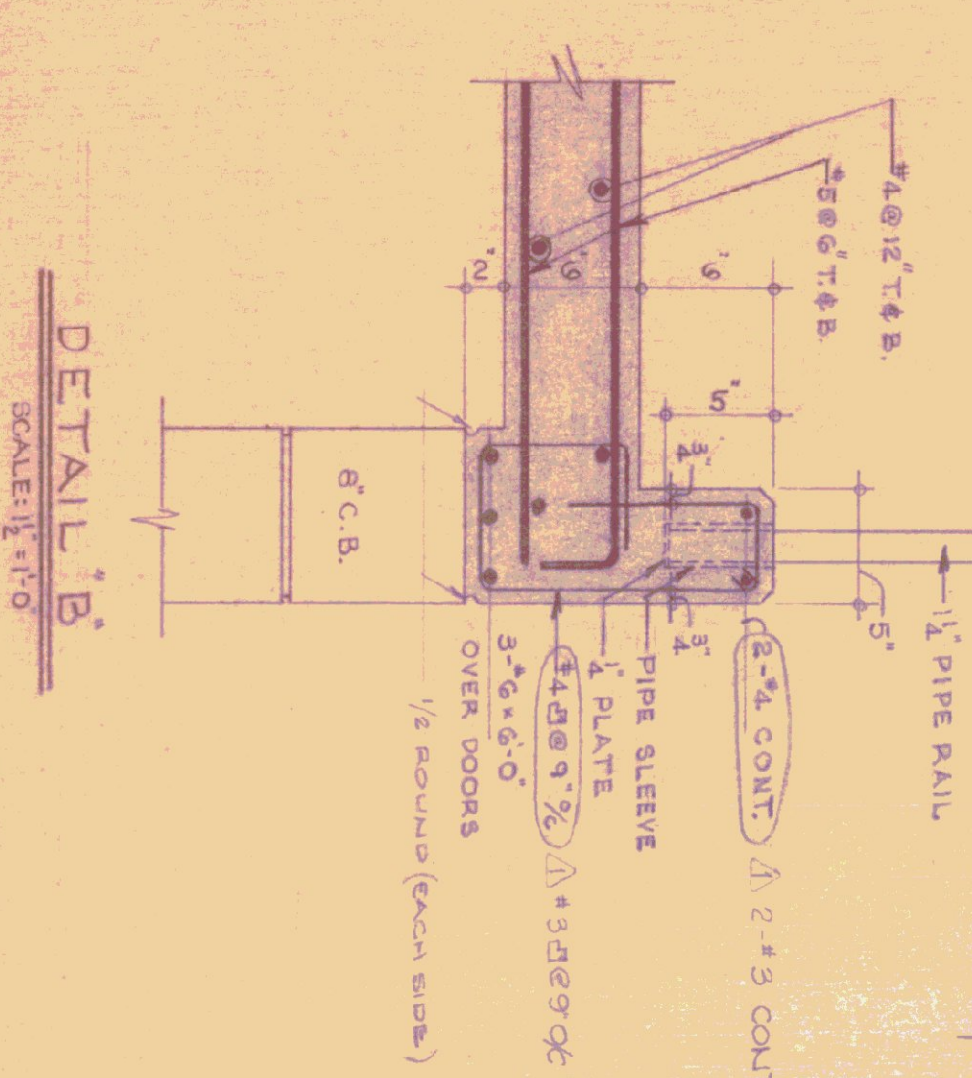
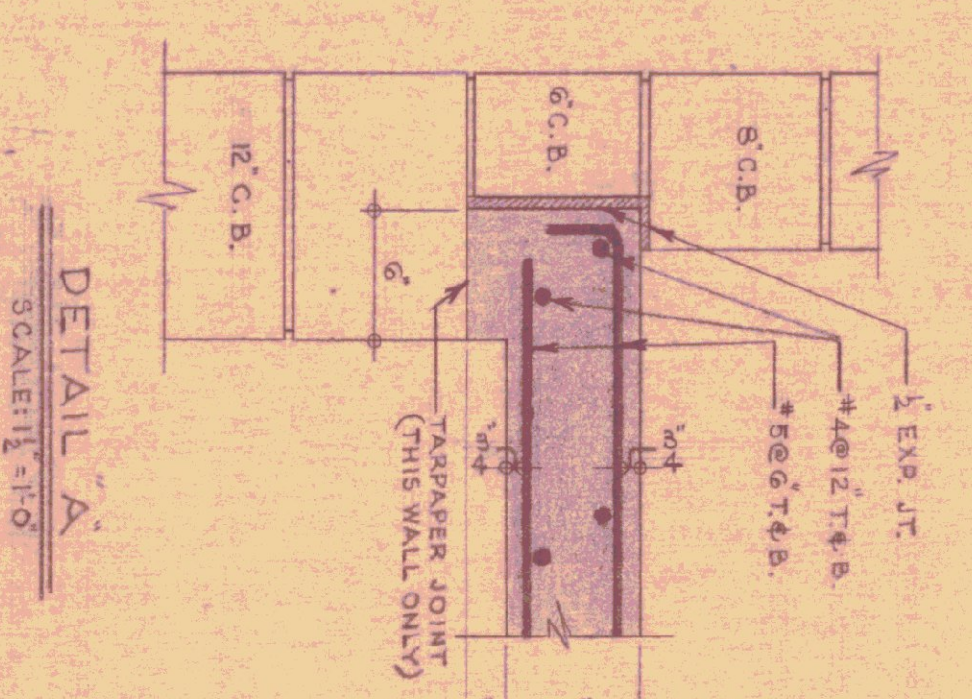
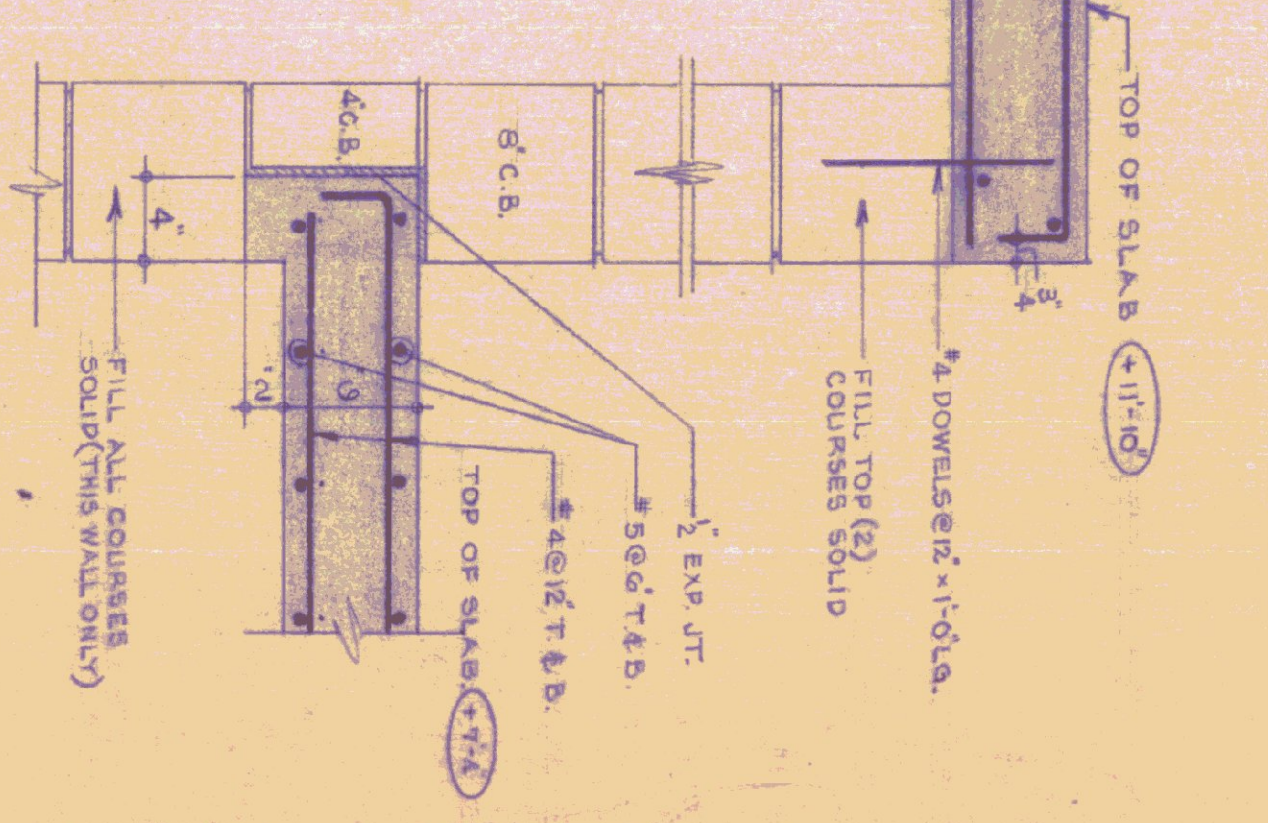
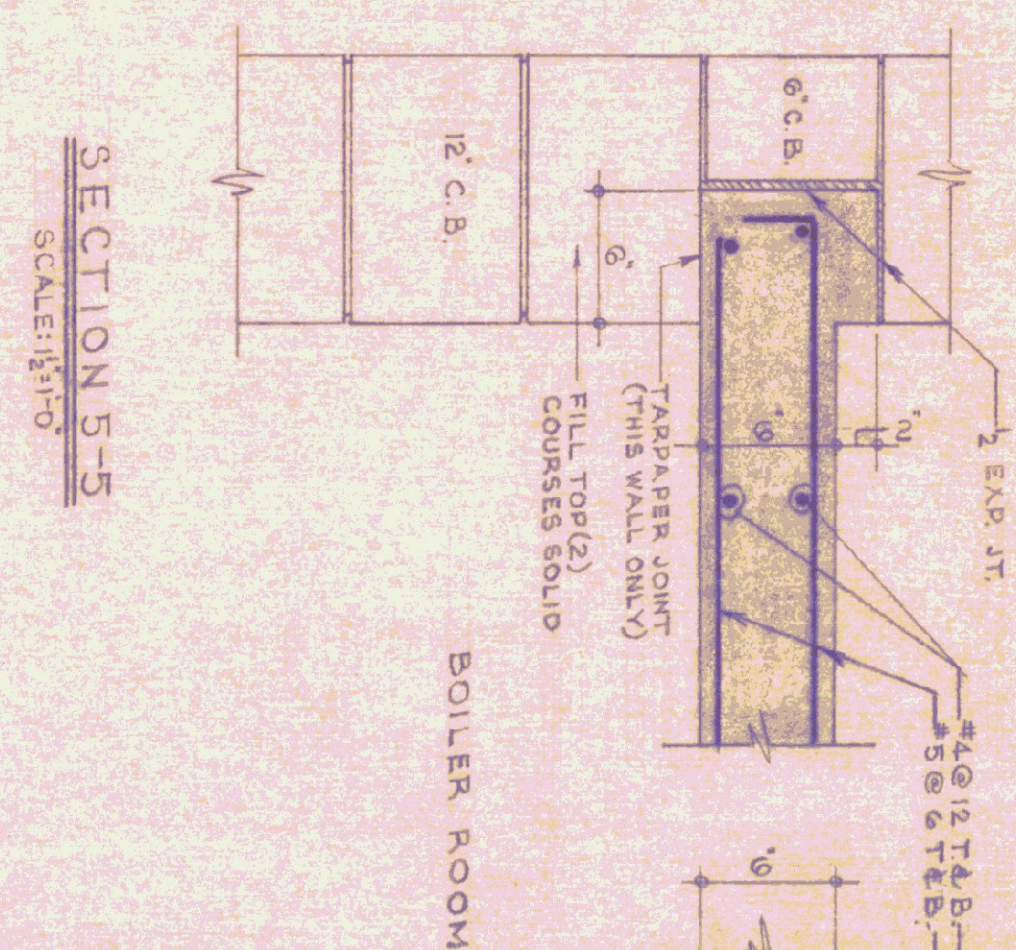
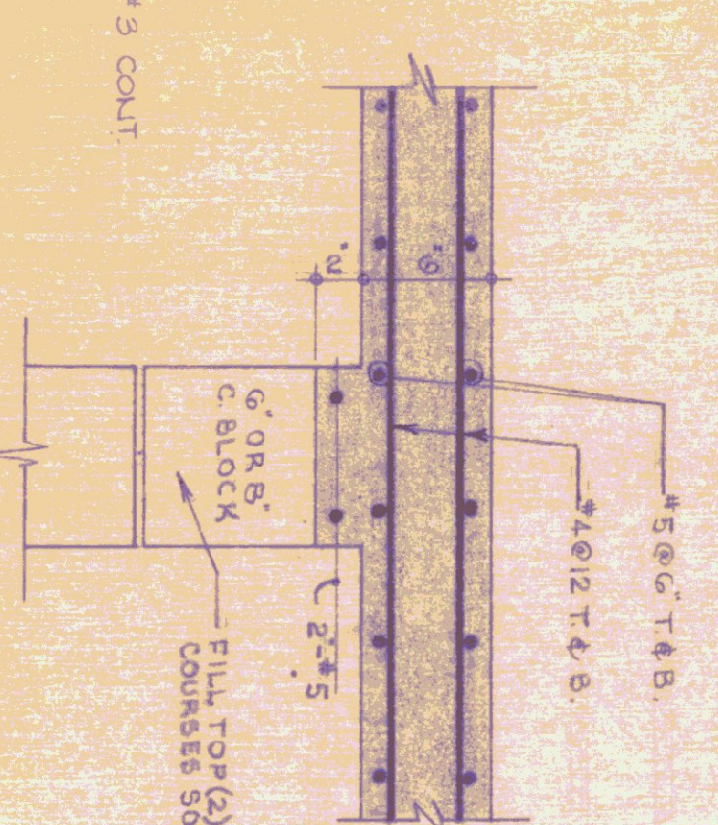
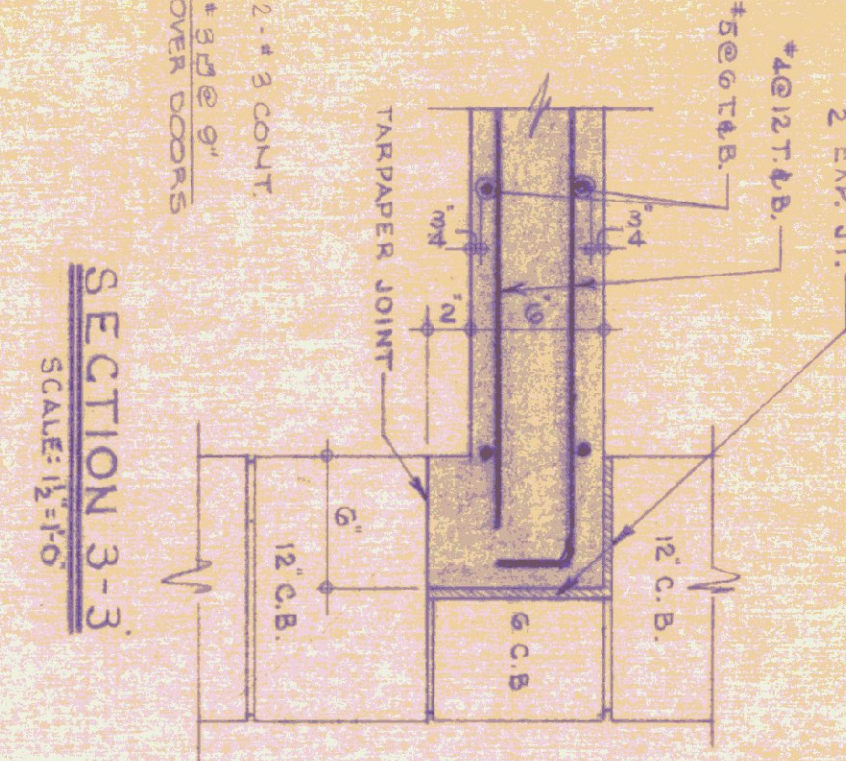
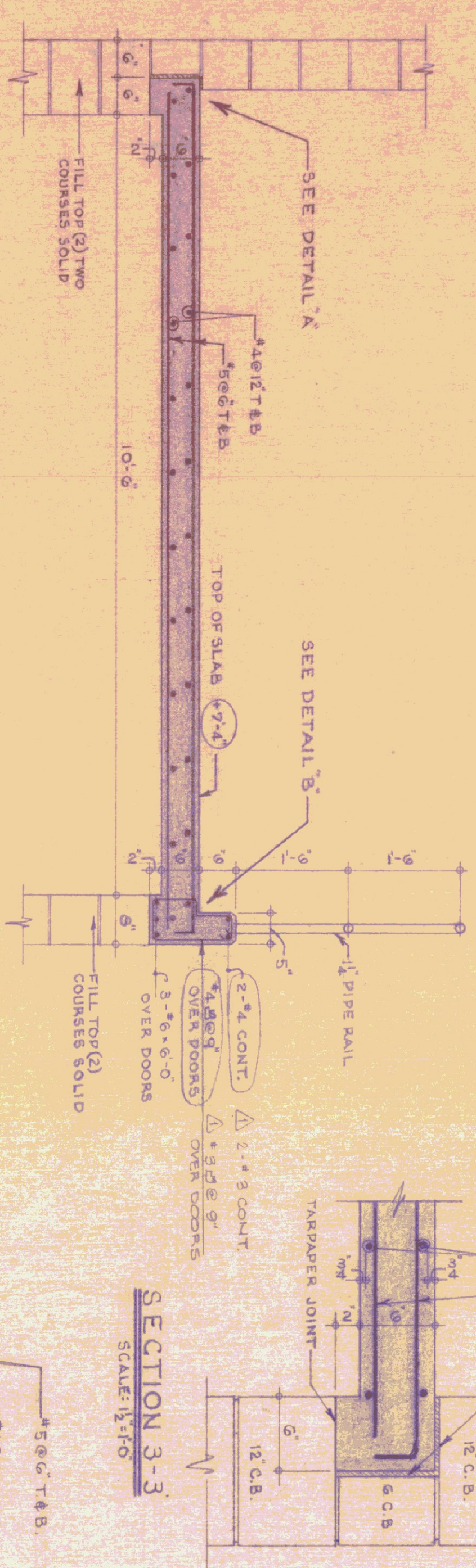
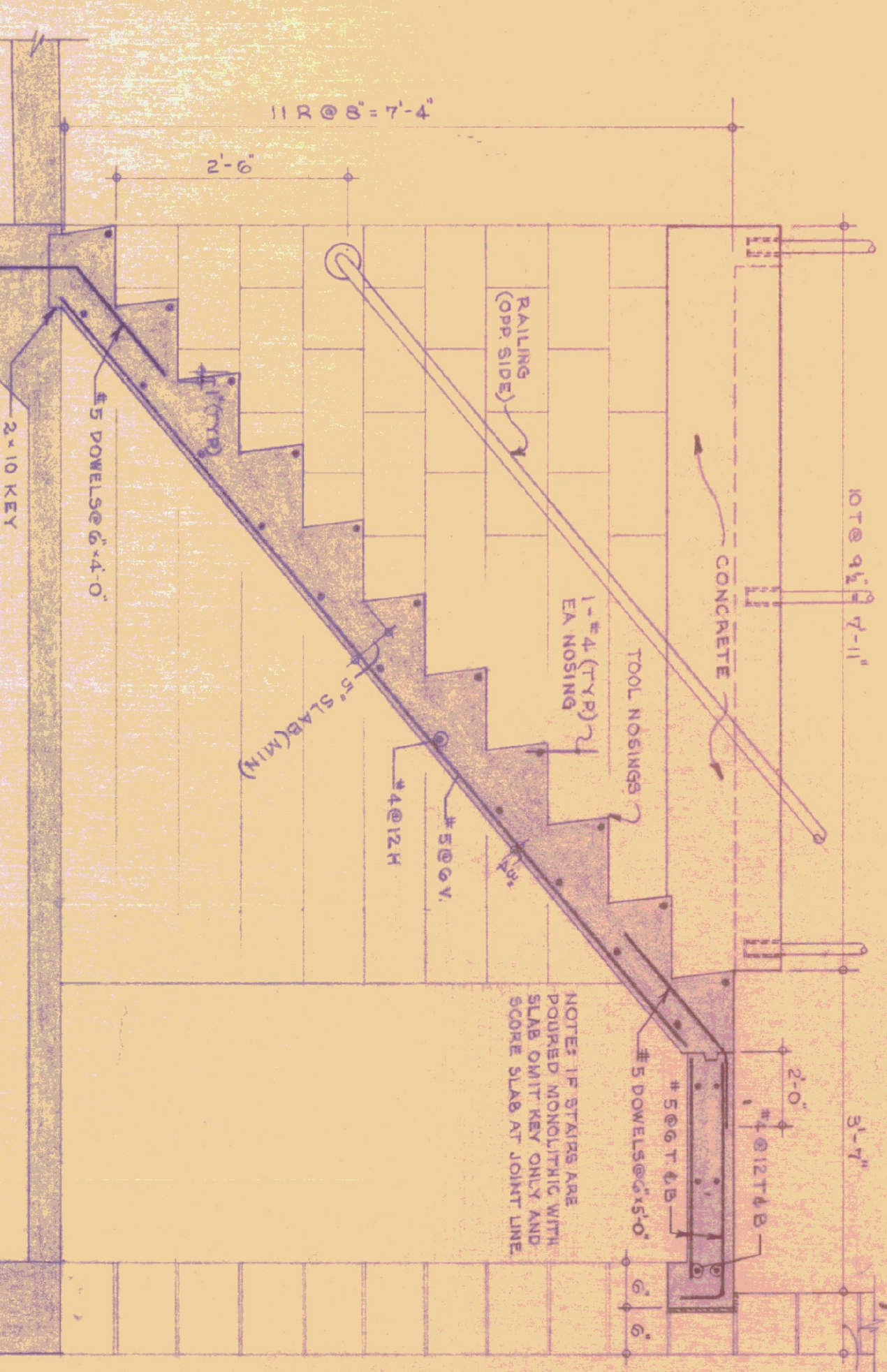
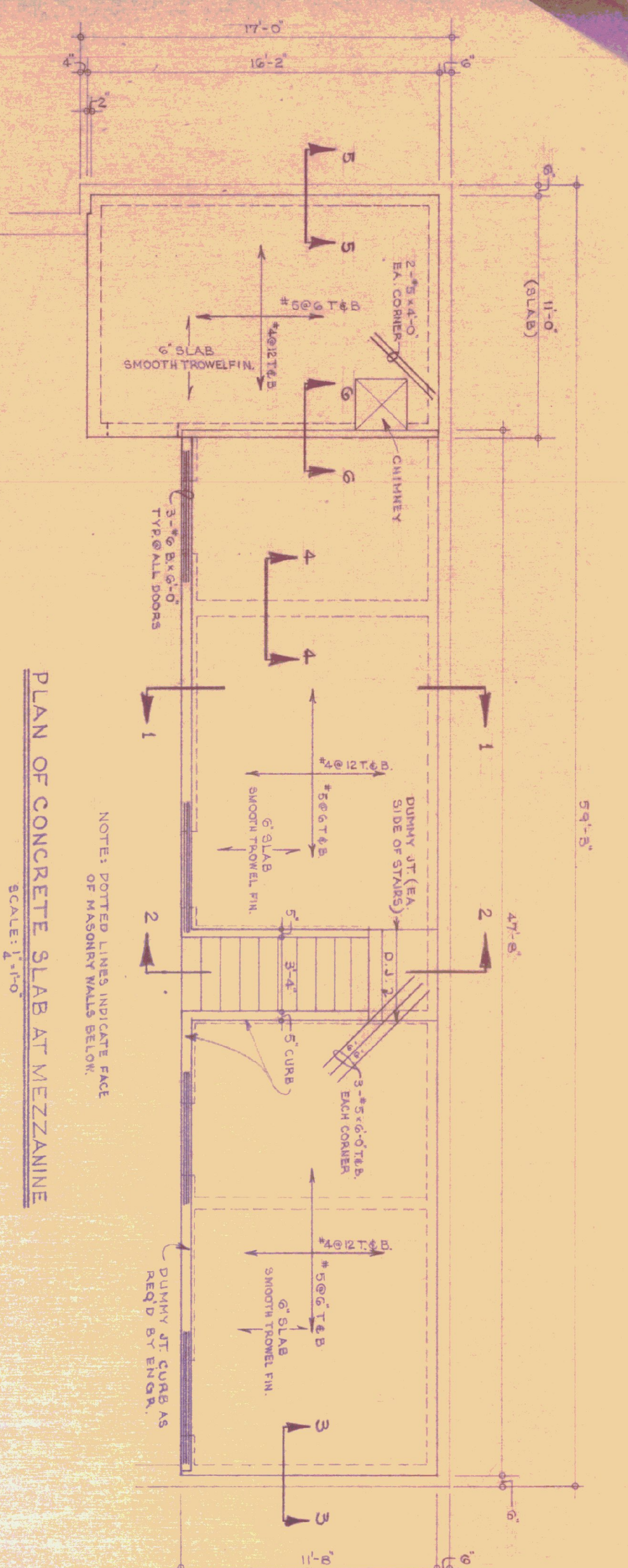
STANDARD
 3 BAY HIGHWAY GARAGE BUILDING

WALL SECTIONS, MISC. DETAILS & DOOR SCHEDULE

DESIGNED BY: J. S. MILLER
 DRAWN BY: S. H. MILLER
 DATE: AUG. 4, '75
 APPROVED BY: [Signature]

INITIALS: [Blank]
 DATE: 6-5-76
 REVISIONS: [Blank]

DWG. NO. A-3
 3 OF 5



- GENERAL NOTES**
1. CONCRETE - 3000 PSI, 28 DAYS, MAXIMUM SLUMP 4"
 2. ALL EXPOSED CONCRETE TO BE RUBBED AND CURED.
 3. ALL EXPOSED SLABS & CONCRETE STEPS DURATION OF JOB, UNTIL ACCESSIBILITY.
 4. EXPOSED CURB CORNERS TO BE CHAMFERED 1/4"
 5. ALL SLAB SHOWING TO BE IN PLACE MIN (3) DAYS @ 70°F. RE-SHORE AFTER STRIPPING.
 6. PLASTER, MASONRY FROM CONCRETE - ALL RE-STEEL TO BE LAPPED 40 DIA.
 7. REINFORCING STEEL TO BE LAPPED ON SLAB BOLTS & HI-CHAIRS, LESS TO BE PVC PLASTIC.
 8. ALL REINFORCING STEEL TO BE LAPPED 40 DIA.
 9. ALL REINFORCING STEEL TO BE LAPPED 40 DIA.
 10. ONE SECTION OF RAILING, EACH SIDE OF STAIRS TO BE REMOVABLE.
 11. PIPE RAILING POSTS TO BE LEDDED INTO STEELS.
 12. ALL CONCRETE SLABS SHALL BE 18" COMPACTED THROUGHOUT.
 13. ALL CONCRETE SHALL BE PLACED IN 18" MAXIMUM LIFTS.

NO.	BY	DATE	REVISION
1	TJS	8/21/75	REVISION 3 - CURB DETAILS

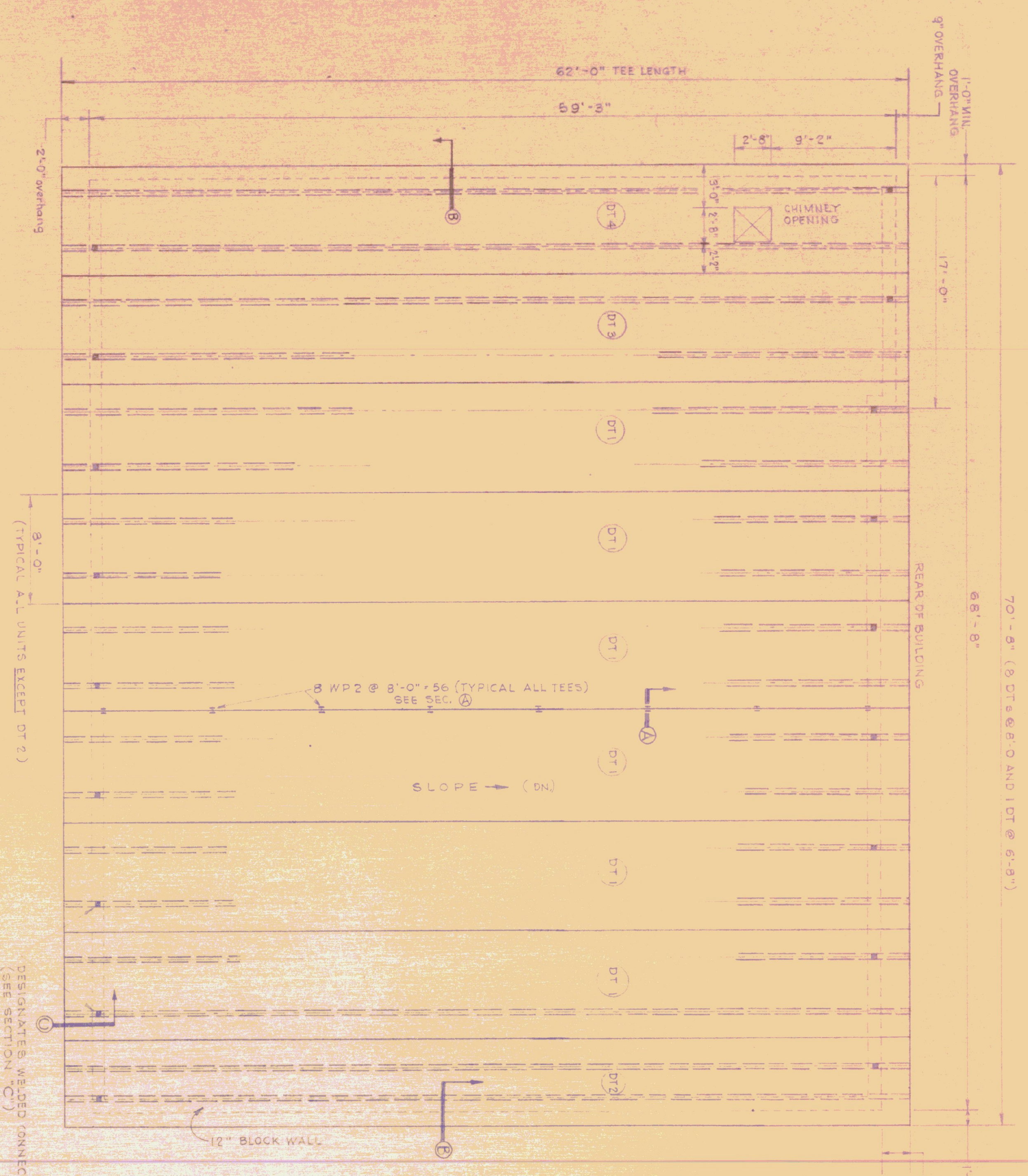
STATE OF VERMONT
DIVISION OF STATE BUILDINGS
AGENCY OF ADMINISTRATION
MONTPELIER, VERMONT

Standard Highway Garage Building
DETAILS OF MEZZANINE, BOILER
ROOM SLABS AND CONC. STAIRWAY

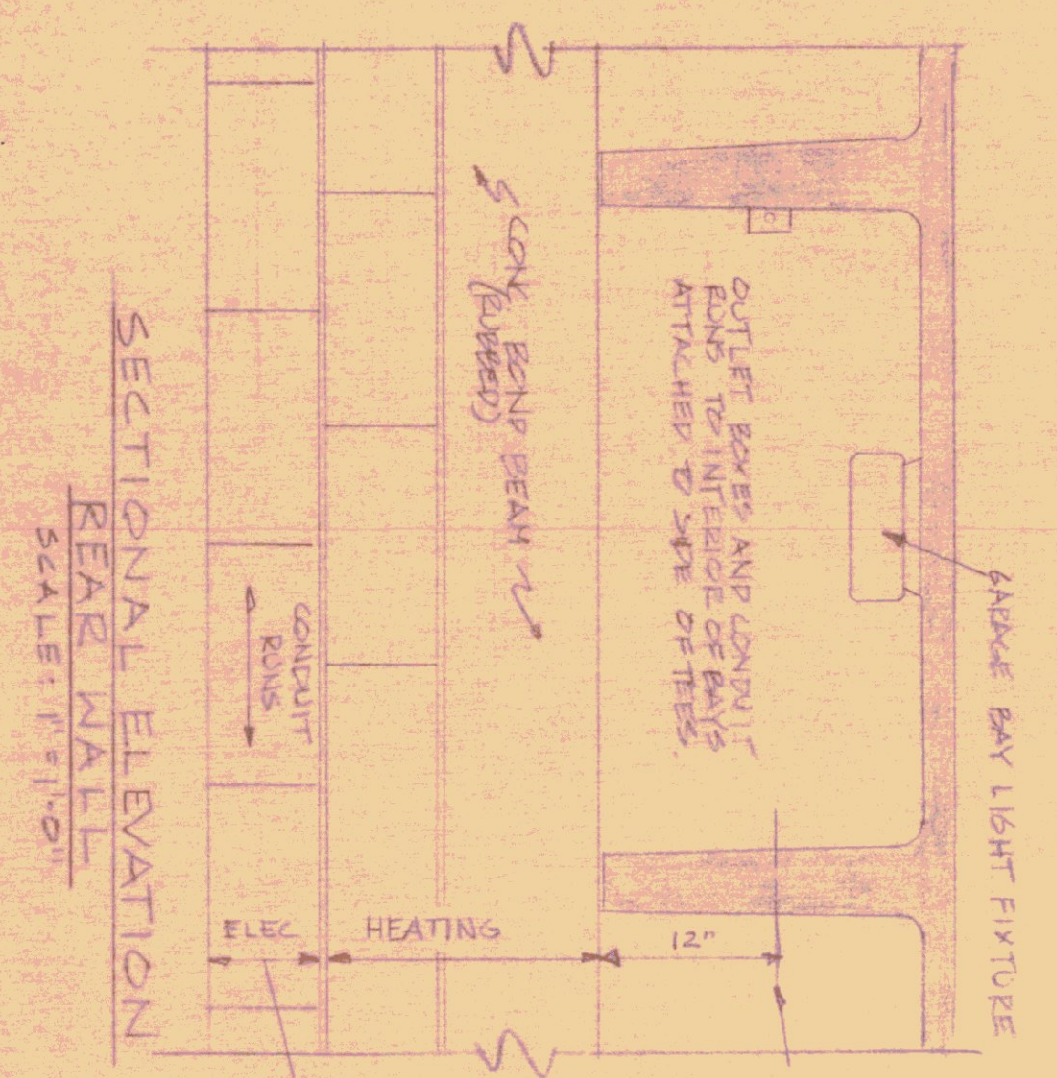
SCALE: As noted

DESIGNED BY: [Signature]
DRAWN BY: [Signature]
DATE: 10/18/74
APPROVED BY: [Signature]
STRUCTURE NO.: 404

DATE: 10/18/74
DWG. NO.: A4



ROOF FRAMING PLAN
SCALE: 3/16" = 1'-0"

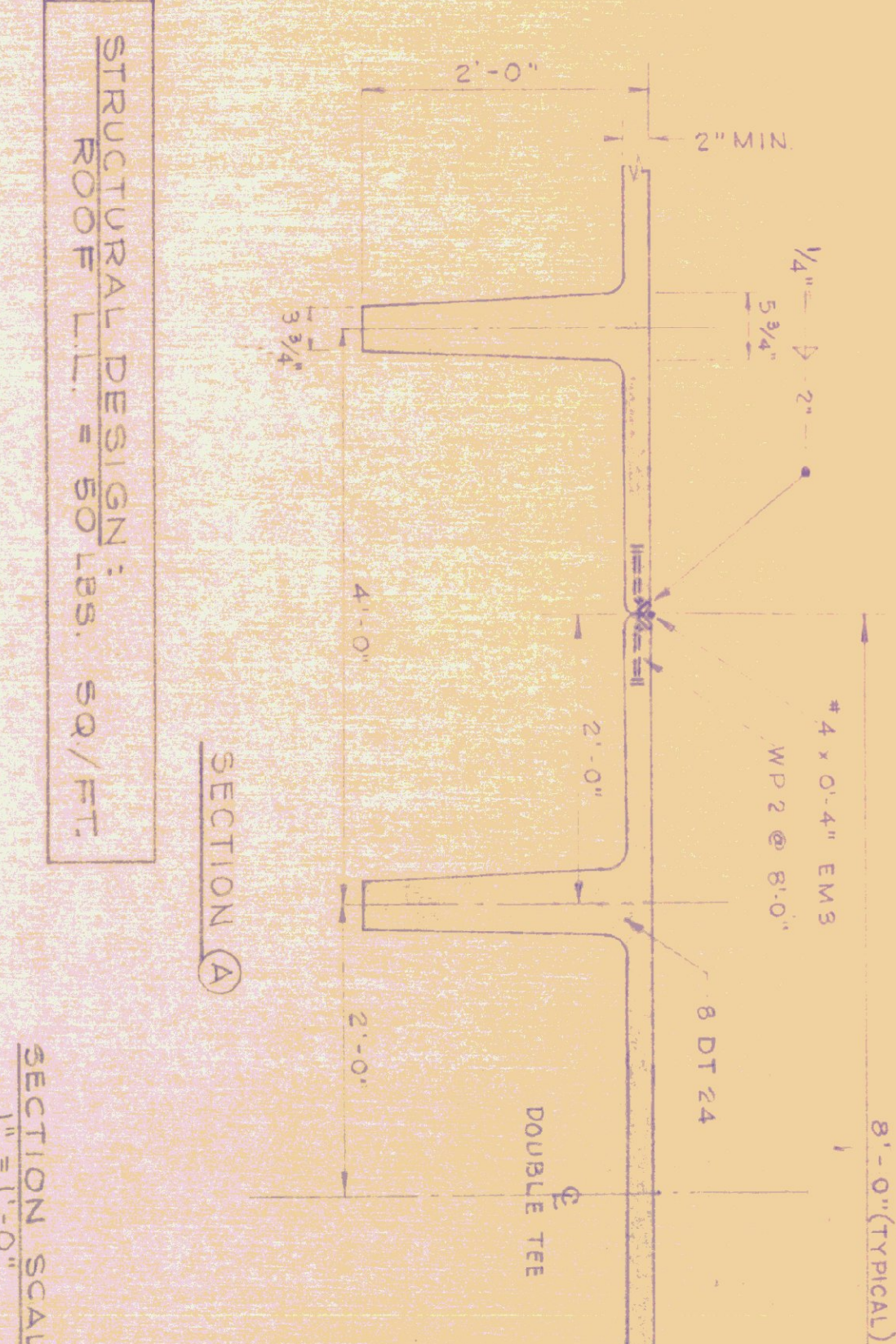


SECTIONAL ELEVATION
REAR WALL
SCALE: 1/4" = 1'-0"

NOTE: ANY ATTACHED SUPPORTS TO DOUBLE TEES MUST BE WITHIN 12" FROM BOTTOM OF WEB. NO BOLTED HOLES OR CONDUIT-TREAT ALLOWED.

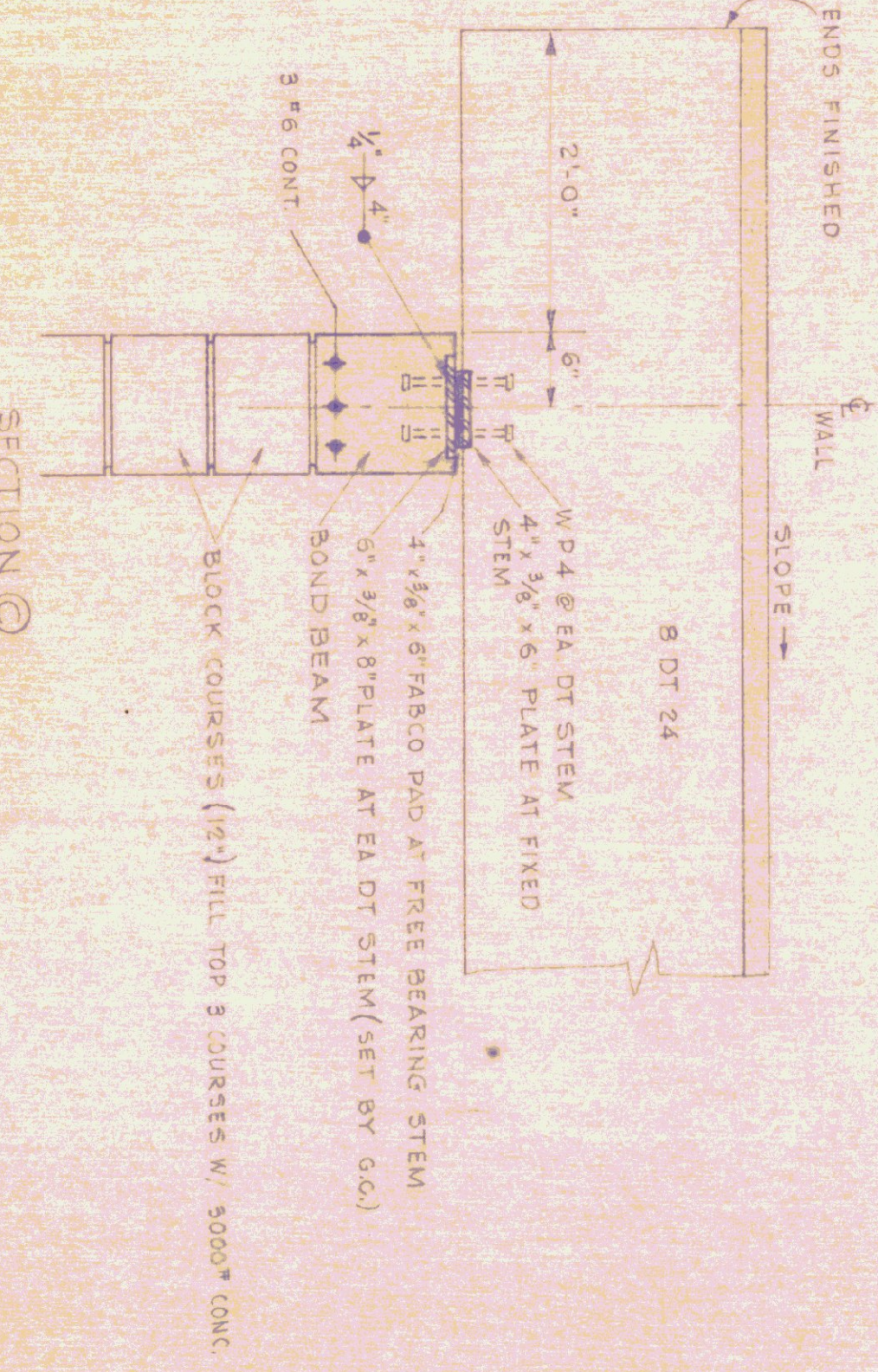
INSTALL HEATING PIPING AS SHOWN IN THIS AREA.

INSTALL ELECTRICAL CONDUIT WITHIN THIS COURSE. COORD WITH CONTRACTOR. ALL OTHER CONDUIT & PIPING SHALL BE COORDINATED WITH THE CONTRACTOR.



STRUCTURAL DESIGN:
ROOF L.L. = 50 lbs. SQ/FT.

SECTION SCALE
1/4" = 1'-0"

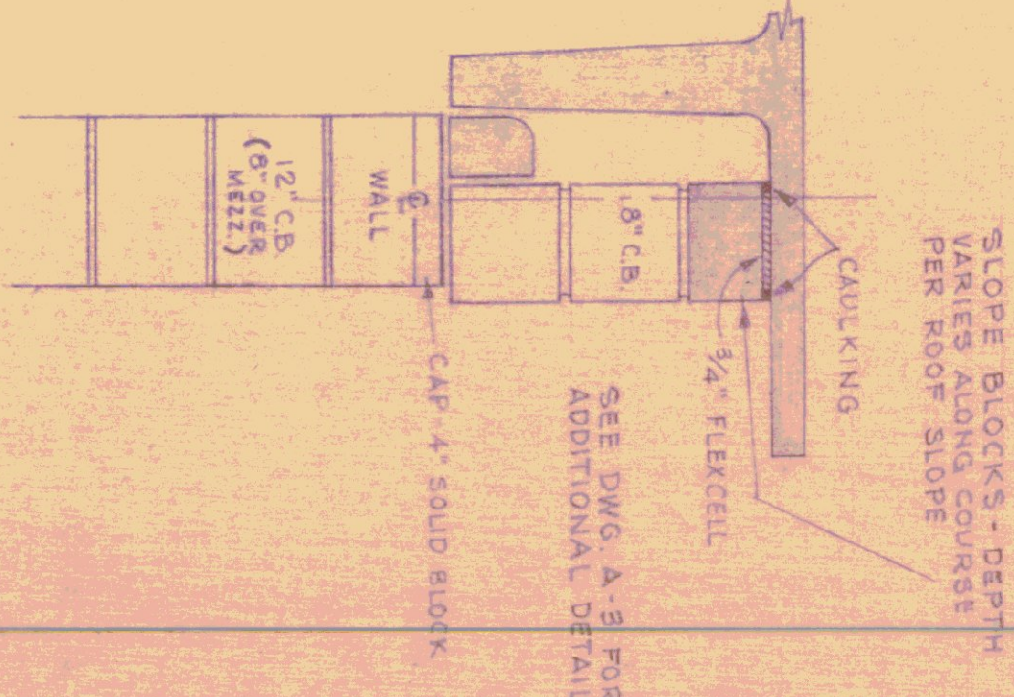


SECTION C

NOTE: FOR BEARING WALL DETAILS SEE DWG. A-8.

NOTE:
THIS DRAWING IS TO BE USED FOR A 3 BAY GARAGE - ALL DETAILS SHOWN ARE TYPICAL - ADD ADDITIONAL BAY TO MAKE (4) BAYS.

- GENERAL NOTES:
1. THE CONTRACTOR IS TO FURNISH SHOP DRAWINGS FOR APPROVAL BEFORE RELEASE FOR FABRICATION.
 2. THE CONTRACTOR SHALL FURNISH MANUFACTURERS ENGINEERS CERTIFICATE FOR COMPLIANCE WITH DESIGN LOADING.
 3. ALL EXPOSED PRECAST DOUBLE TEE SLABS AND WEBS ARE NOT TO BE PAINTED.
 4. ALL SURFACES NOT UNIFORM IN FINISH WHEN INSTALLED SHALL BE POINTED UP AND RUBBED.
 5. ALL UTILITY PIPING ATTACHMENTS AND ANCHORS TO DOUBLE TEES ARE TO BE PLACED NOT LESS THAN 12" FROM BOTTOM OF WEB. THE CONTRACTOR SHALL NOT DRILL ANY HOLES THRU WEBS AT ANY TIME.
 6. ALL PRECAST DOUBLE TEES ARE TO BE WELDED IN PLACE DURING INSTALLATION.
 7. CONCRETE: 5000 P.S.I. @ 28 DAYS (MIN).



SECTION B

REV	DATE	REVISION
02A	7-5-78	PREL. ELEV. REAR WALL - 3 BAY NOTE

STATE OF VERMONT
DIVISION OF STATE BUILDINGS
AGENCY OF ADMINISTRATION
MONTPELIER, VERMONT

STANDARD
3 BAY HIGHWAY GARAGE BUILDING
ROOF FRAMING PLAN
& DETAILS

DATE	DESIGNED BY	DWG. NO.
AUG. 4, '78	T. J. S.	A-5
DRAWN BY	APPROVED BY	SCALE
SCHWABER	Schwabert	5/8" = 1'-0"



ELECTRICAL PLAN
SCALE: 1/4" = 1'-0"

NOTE: THESE FINISH LOCATIONS ARE FOR BACK-SHIRT LOCATIONS ONLY. FINISH LOCATIONS TO HAVE SAME NO. OF FIXTURES SEE THE A-5 FOR RELATIVE LOCATIONS AND PLS.

Leave Finish Above Mezz.

- GENERAL NOTES**
- SWITCH CRAFT "TECH" 30-TEC-2-40S O.E. EQUAL (MOUNT ON BOTTOM OF JOISTS)
 - WESTINGHOUSE 1-TUBE P-3 STRIP 5-STRIP OR EQUIV. (MOUNT ON BOTTOM OF JOISTS) **Above Mezz. Floor**
 - SMITH CRAFT DOMINIAIRE 6-DMA-2-40 O.E. EQUAL (SURFACE MOUNT TO CEILING)
 - TERMOSTAT - CONNECT TO CIRCUIT 12 AND TO SUB-PANEL CIRCUIT 2 MOUNT ON PLYWOOD 5'-2" OFF FLOOR (SEE H-1)
 - 100 AMP WELDER OUTLET
 - ALLOW FOR TELEPHONE SLEEVE TURN EXTERIOR WALL. COORDINATE WITH LOCAL TELEPHONE CO.
 - 100 AMP WELDER OUTLET
 - ALLOW FOR TELEPHONE SLEEVE TURN EXTERIOR WALL. COORDINATE WITH LOCAL TELEPHONE CO.
 - BURNER SAFETY SWITCH - MOUNT 6'-0" ABOVE FIN. FL.
 - ALL WALL OUTLETS OF OFFICE & ROOM SPACES SHALL BE AT LEAST 3'-6" OFF FLOOR (IN BOILER RM. KEEP OUTLETS MIN 3'-0" ABOVE FL.)
 - ALL ELECTRICAL CONDUIT FOR OFFICE, TOILET, TOOL RM. AND GREASE RM. CEILINGS SHALL BE CONCEALED IN THE CONCRETE MEZZANINE SLAB.
 - ALL WALL RECEPTACLES AND CONDUIT BELOW BOTTOM OF BAR JOISTS SHALL BE CONCEALED, SUBJECT TO U.N.H.H.O.S.

POWER PANEL SCHEDULE

PANEL	CIRCUIT BREAKER TYPE	NO. WESTINGHOUSE	120/240V 1P SW	REMARKS
P-1	400 AMP MAIN	1	1	10,000 ICR SHAKING 50 HOLE
P-1	100 AMP	2	1	EMERGENCY DIST. PANEL
P-2	100 AMP	2	1	WELDING RECEPTACLE
P-3	100 AMP	2	1	do
P-4	20 AMP	1	1	TOILET ELECT. RM. RECEPT.
P-5	20 AMP	1	1	BLDG. EXHAUST
P-6	20 AMP	1	1	SHOP LIGHTING
P-7	20 AMP	1	1	do
P-8	20 AMP	1	1	SHOP RECEPTACLES (FRONT)
P-9	20 AMP	1	1	(REAR)
P-10	20 AMP	1	1	do
P-11	20 AMP	1	1	MID-BAY RECEPT. JOISTS
P-12	20 AMP	1	1	SHOP RECEPTACLES
P-13	20 AMP	1	1	CIRCUIT PUMP ZONE "2"
P-14	30 AMP	2	1	SPARKS
P-15	30 AMP	2	1	do
P-20-24	20 AMP	1	1	do

EMERGENCY DIST. PANEL SCHEDULE

PANEL	CIRCUIT BREAKER TYPE	NO. WESTINGHOUSE	SHUNT TRIP LOAD CENTER	20 VOLT	REMARKS
1	40 AMP	2	1	1	EMERGENCY EQUIPMENT SERVICE
2	20 AMP	1	1	1	AIR COMPRESSOR
3	20 AMP	2	1	1	BURNER
4	20 AMP	1	1	1	GAS PUMP
5	20 AMP	1	1	1	OFFICE LIGHTING
6	20 AMP	1	1	1	MEZZ. LIGHTING
7	20 AMP	1	1	1	SUP. LIGHT (OFFICE AND MEZZ.)
8	20 AMP	1	1	1	BOILER ROOM LIGHTING
9	20 AMP	1	1	1	BOILER ROOM RECEPT.
10	20 AMP	1	1	1	CLIP. PUMP ZONE 1
11	20 AMP	1	1	1	CLIP. PUMP ZONE 3
12	20 AMP	1	1	1	OFFICE RECEPTACLES
13	20 AMP	1	1	1	BOILER ROOM RECEPT.

STATE OF VERMONT
DIVISION OF STATE BUILDINGS
AGENCY OF ADMINISTRATION
MONTPELIER, VERMONT

Standard Four Bay Highway Garage Bldg.
ELECTRICAL PLAN

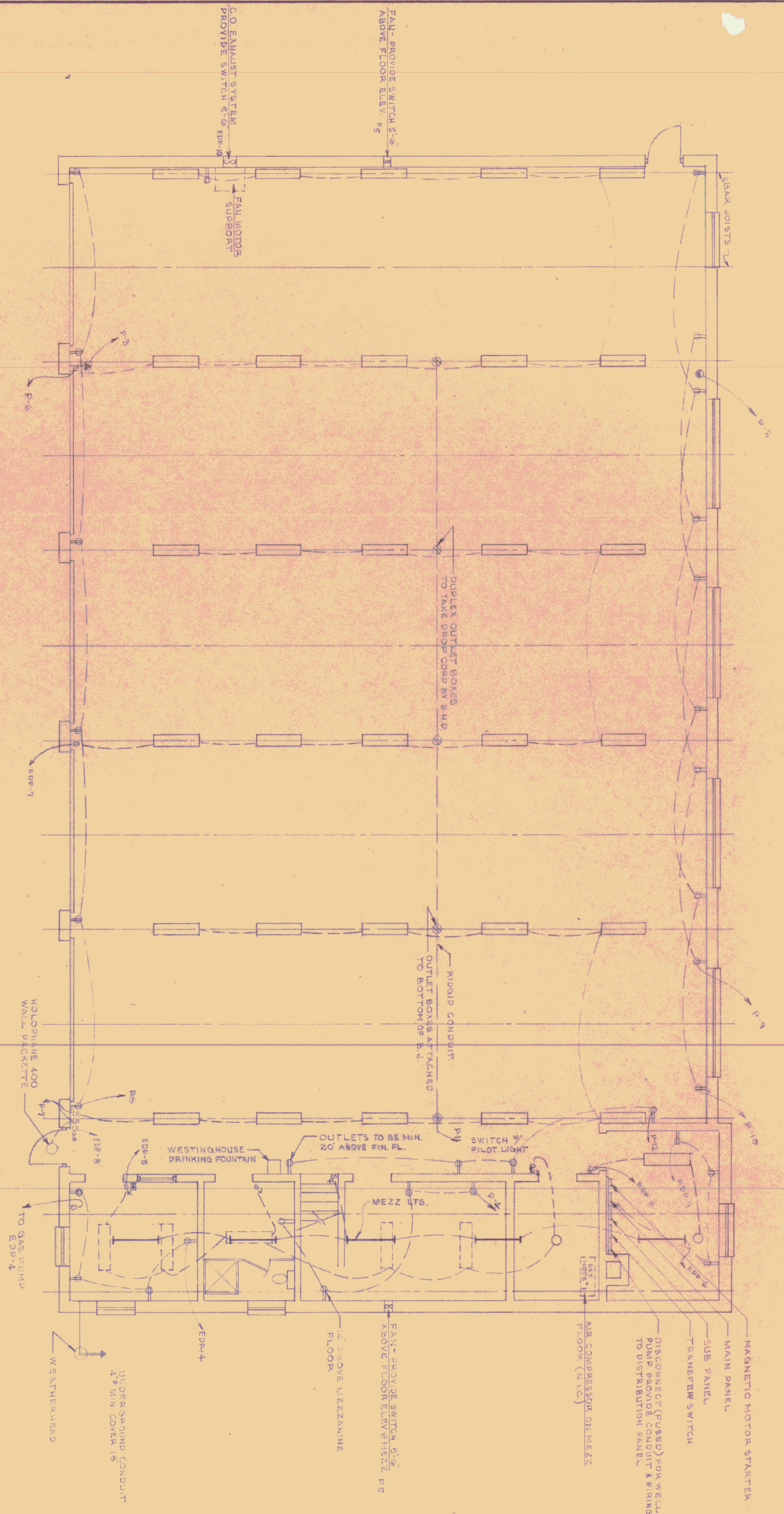
SCALE: As noted

DATE	DESIGNED BY	CHKD. NO.
10-18-74	GUS MASTRO	E-1

REVISIONS: 7-6-78 RCH

APPROVED BY: [Signature]

STUDIO SEER INC.



ELECTRICAL PLAN

(5 BAY)

SCALE: 1/8" = 1'-0"

POWER PANEL SCHEDULE

PANEL	CIRCUIT BREAKER TYPE	STYLE	NO. OF CIRCUITS	REMARKS
P-1	100	2	EMERGENCY DIST. PANEL	
P-2	100	2	WELDING RECEPTACLE	
P-3	100	2	COLLECT & STORE RECEPT.	
P-4	20	1	BLOOD EXHAUST	
P-5	20	1	SHOP LIGHTING	
P-6	20	1	do	
P-7	20	1	do	
P-8	20	1	SHOP RECEPTACLES (FRT)	
P-9	20	1	SHOP RECEPTS (REAR)	
P-10	20	1	do	
P-11	20	1	MID BAY RECEPT. 35TS	
P-12	20	1	SHOP RECEPTS	
P-13	20	1	CIRCUIT BREAKER (ZONE 2)	
P-14	20	1	SPARES	
P-17	50	2	SPARES	
P-20	20	1	SPARES	

EMERGENCY DISTRIBUTION PANEL SCHEDULE

PANEL	CIRCUIT BREAKER TYPE	STYLE	NO. OF CIRCUITS	REMARKS
EDP-1	40	2	AIR COMPRESSOR	
EDP-2	20	1	BURNER	
EDP-3	20	2	WELL PUMP	
EDP-4	20	1	GAS PUMP	
EDP-5	20	1	OFFICE LIGHTING	
EDP-6	20	1	MEZZ LIGHTING	
EDP-7	20	1	SHOP LIGHTING (MIDDLE BAY)	
EDP-8	20	1	BOILER ROOM LIGHTING	
EDP-9	20	1	BOILER ROOM RECEPTS	
EDP-10	20	2	VEHICULAR EXH. FAN	
EDP-11	20	1	MUN. 1, 2, 3	
EDP-12	20	1	CIRCUIT BREAKER ZONE 1	
EDP-13	20	1	CIRCUIT BREAKER ZONE 3	
EDP-14	20	1	OFFICE RECEPTACLES	
EDP-15	20	1	SPARES	

GENERAL NOTES

- SMITHCRAFT "TECU" 30-TEC-2-40's (MOUNT ON BOTTOM OF JOISTS)
- WESTINGHOUSE 1-TUBE RS STRAP 5 STWGR (MOUNT BETWEEN JOISTS)
- SMITHCRAFT DOMINAIR 6-DMA-2-40 (SURFACE MOUNT TO CEILING)
- THERMOSTAT - CONNECT TO CIRCUIT 1/2 AND TO SUB-PANEL CIRCUIT 4 MOUNT ON PLYWOOD 5' 6" OFF FLOOR (SEE H-1)
- 100 AMP WELDER OUTLET
- ALLOW FOR TELEPHONE SLEEVES THRU EXTERIOR WALL COORDINATE WITH LOCAL TELEPHONE CO.
- SUB BURNER SAFETY SWITCH - MOUNT 6'0" ABOVE FIN. FL.
- ALL ELECTRICAL CONDUIT FOR OFFICE TOILET TOOL RM. AND MEZZANINE SHALL BE CONCEALED IN THE CONCRETE PAR JOISTS SHALL BE CONCEALED.
- ALL WALL OUTLETS OF OFFICE & ROOM SPACES SHALL BE AT LEAST 30" OFF FLOOR (IN BOILER RM KEEP OUTLETS MIN. 3'-0" ABOVE F.L.)
- ALL ELECTRICAL CONDUIT FOR OFFICE TOILET TOOL RM. AND MEZZANINE SHALL BE CONCEALED IN THE CONCRETE PAR JOISTS SHALL BE CONCEALED.

STATE OF VERMONT
DIVISION OF STATE BUILDINGS
AGENCY OF ADMINISTRATION

MONTPELIER, VT

Standard Five Bay Highway Garage Bldg.
NEWBURY
ELECTRICAL PLAN

SCALE: As noted

DATE: 10-18-74
DRAWN BY: GUS MASTRO
DESIGNED BY: GUS MASTRO
APPROVED BY: [Signature]

REVISIONS

NO.	DATE	REVISION

DWG. NO. E-1