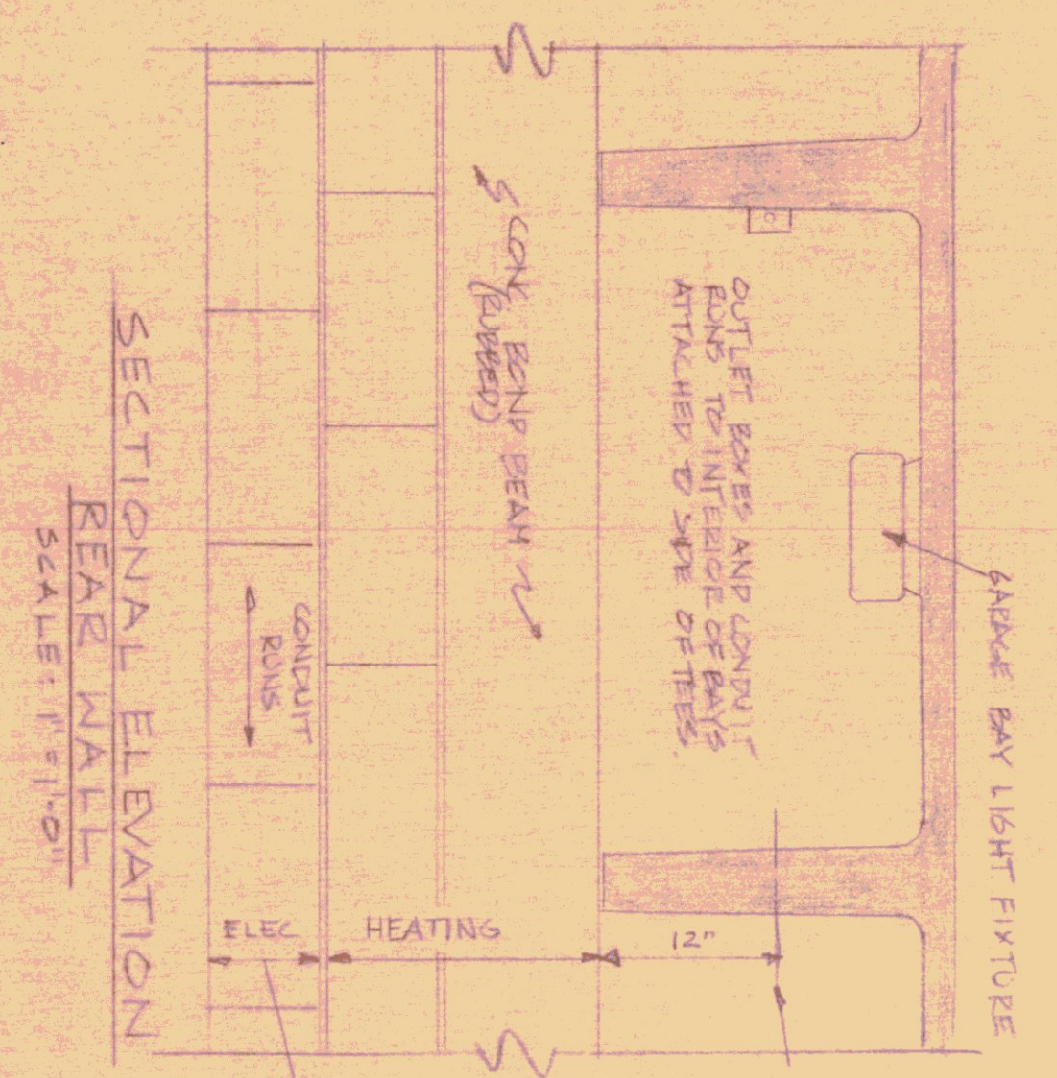
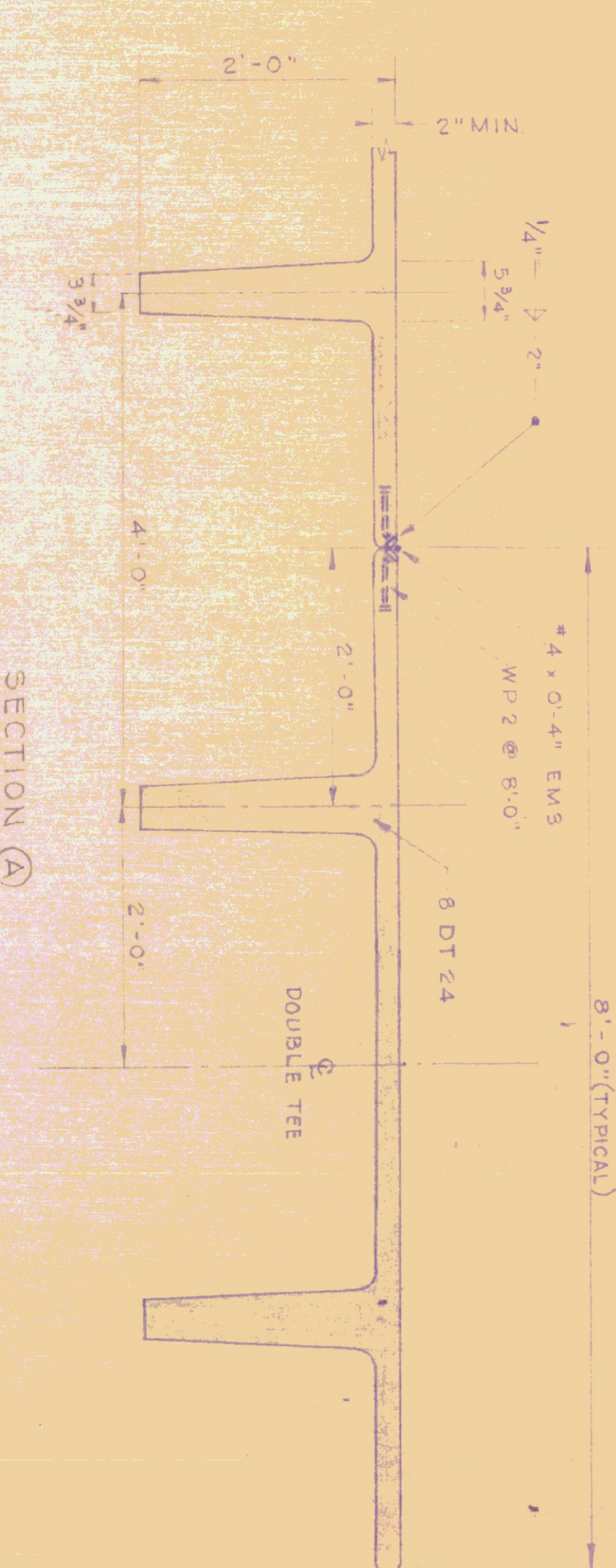


**ROOF FRAMING PLAN**  
SCALE: 3/4" = 1'-0"



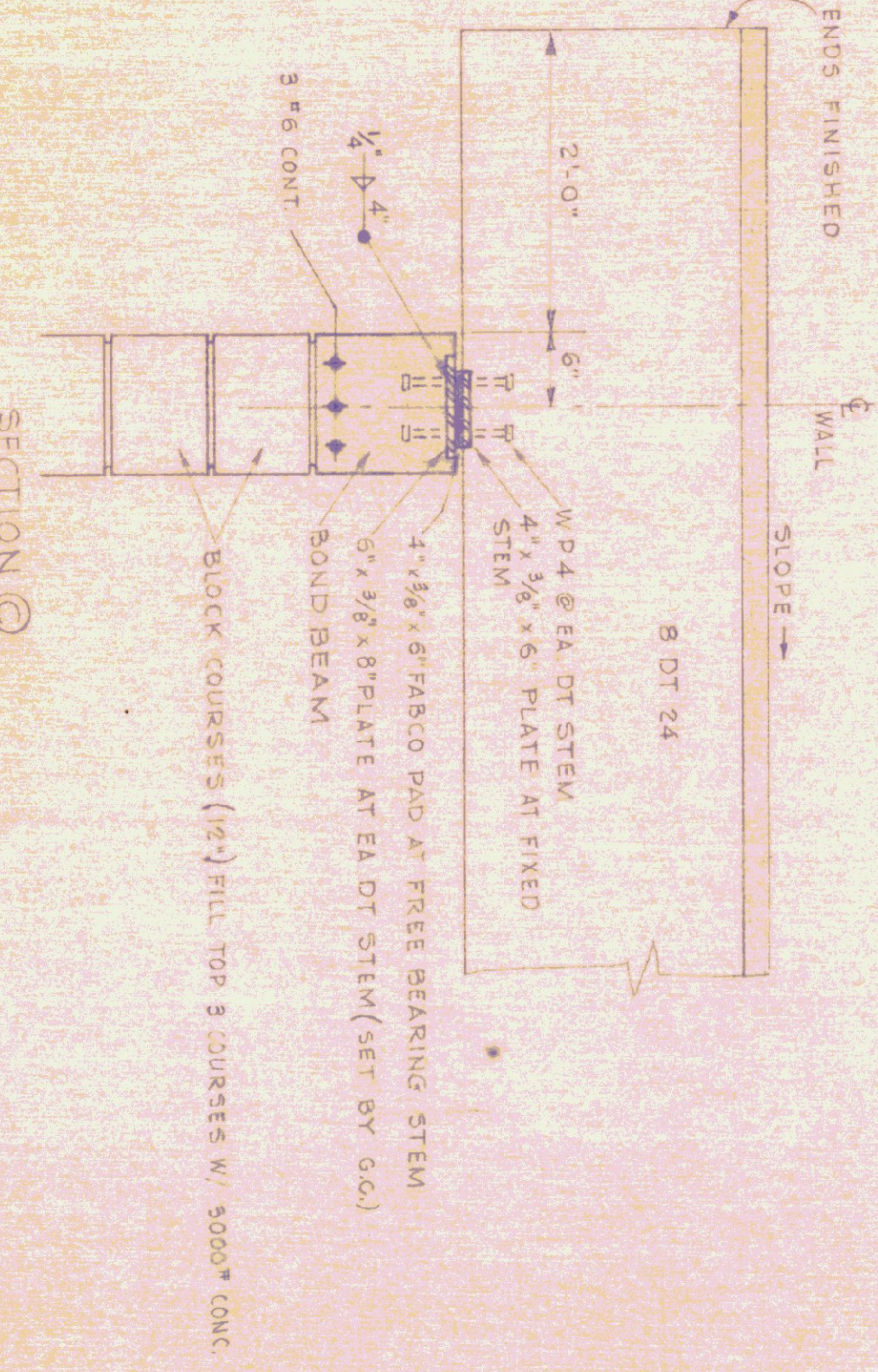
**SECTIONAL ELEVATION REAR WALL**  
SCALE: 1/4" = 1'-0"

NOTE: ANY ATTACHED SUPPORTS TO DOUBLE TEES MUST BE WITHIN 12" FROM BOTTOM OF WEB. NO BOLTED HOLES IN CONCRETE SHALL BE ALLOWED. INITIAL HEATING PIPING AS KEPT IN THIS AREA.



**STRUCTURAL DESIGN: ROOF L.L. = 50 lbs. SQ/FT.**

**SECTION SCALE 1/4" = 1'-0"**



**SECTION C**

NOTE: FOR BEARING WALL DETAILS SEE DWG. A-8.

NOTE: THIS DRAWING IS TO BE USED FOR A 3 BAY GARAGE - ALL DETAILS SHOWN ARE TYPICAL - ADD ADDITIONAL BAY TO MAKE (4) BAYS.

- GENERAL NOTES:**
1. THE CONTRACTOR IS TO FURNISH SHOP DRAWINGS FOR APPROVAL BEFORE RELEASE FOR FABRICATION.
  2. THE CONTRACTOR SHALL FURNISH MANUFACTURERS ENGINEERS CERTIFICATE FOR COMPLIANCE WITH DESIGN LOADING.
  3. ALL EXPOSED PRECAST DOUBLE TEE SLABS AND WEBS ARE NOT TO BE PAINTED.
  4. ALL SURFACES NOT UNIFORM IN FINISH WHEN INSTALLED SHALL BE POINTED UP AND RUBBED.
  5. ALL UTILITY PIPING ATTACHMENTS AND ANCHORS TO DOUBLE TEES ARE TO BE PLACED NOT LESS THAN 12" FROM BOTTOM OF WEB. THE CONTRACTOR SHALL NOT DRILL ANY HOLES THRU WEBS AT ANY TIME.
  6. ALL PRECAST DOUBLE TEES ARE TO BE WELDED IN PLACE DURING INSTALLATION.
  7. CONCRETE: 5000 P.S.I. @ 28 DAYS (MIN).

REV	DATE	REVISION
02A	7-5-78	PREL. ELEV. REAR WALL - 3 BAY NOTE

STATE OF VERMONT  
DIVISION OF STATE BUILDINGS  
AGENCY OF ADMINISTRATION  
MONTPELIER, VERMONT

STANDARD  
3 BAY HIGHWAY GARAGE BUILDING  
**ROOF FRAMING PLAN & DETAILS**

DATE AUG. 4, '78	DESIGNED BY T. J. S.	DWG. NO. A-5
DRAWN BY S. MONTPELIER	APPROVED BY S. MONTPELIER	SHEET NO. 5 OF 5