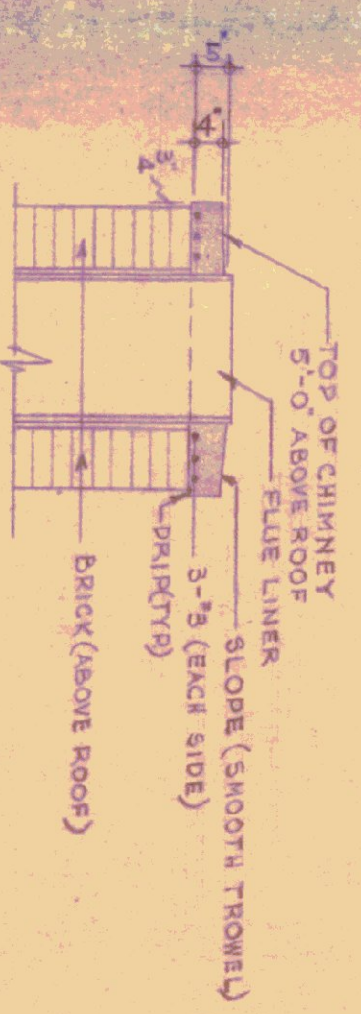


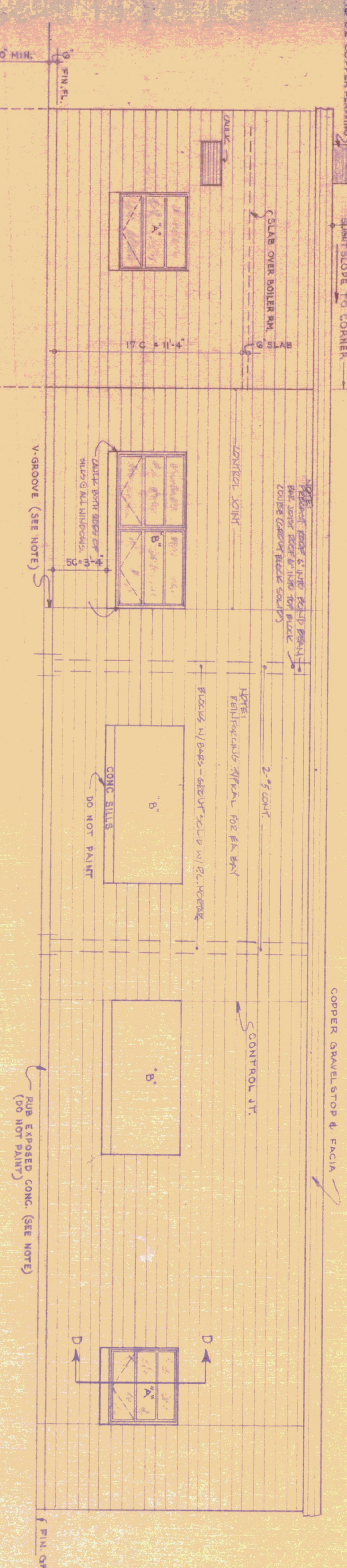
CHIMNEY CAP DETAIL



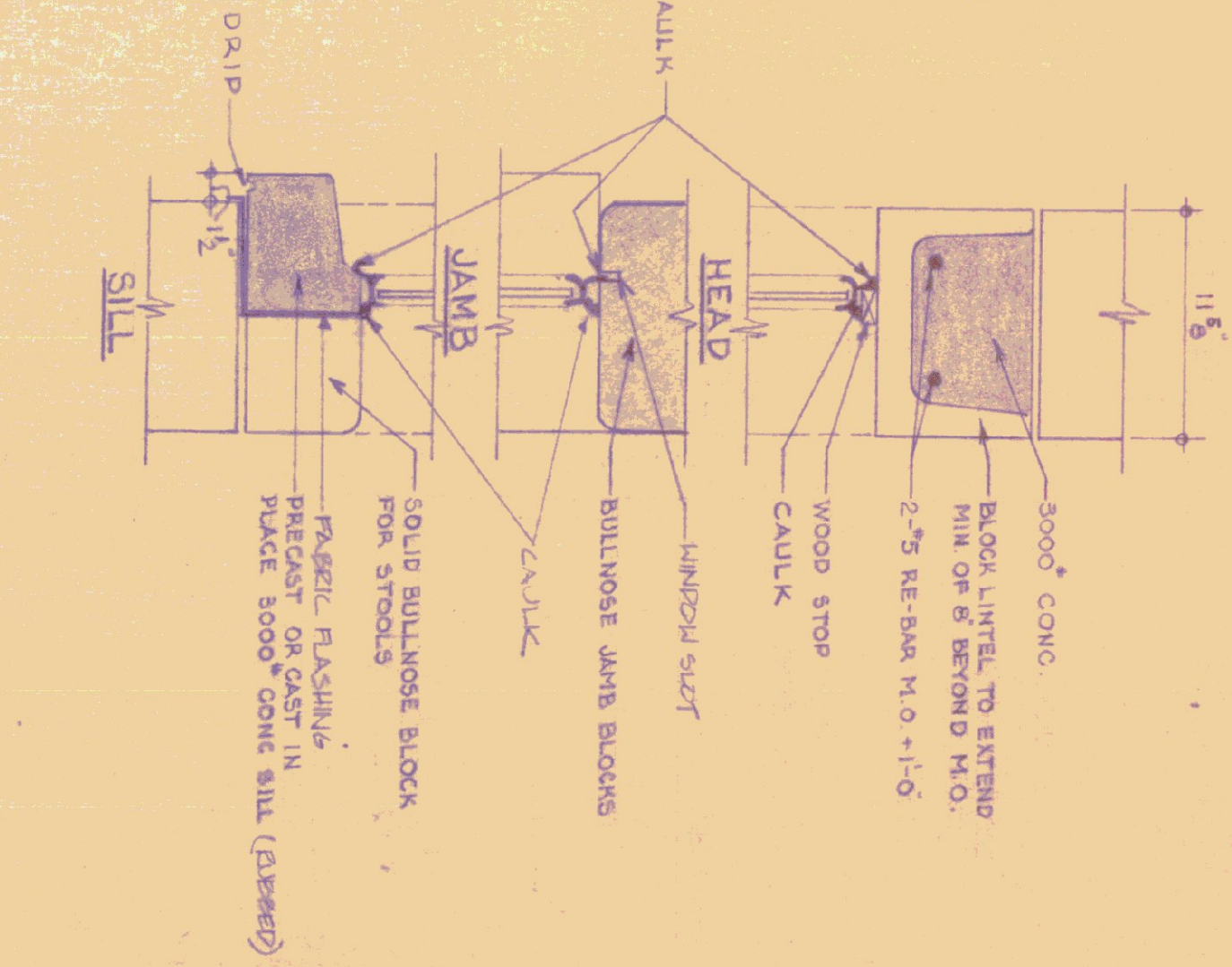
RIGHT END ELEVATION



REAR ELEVATION

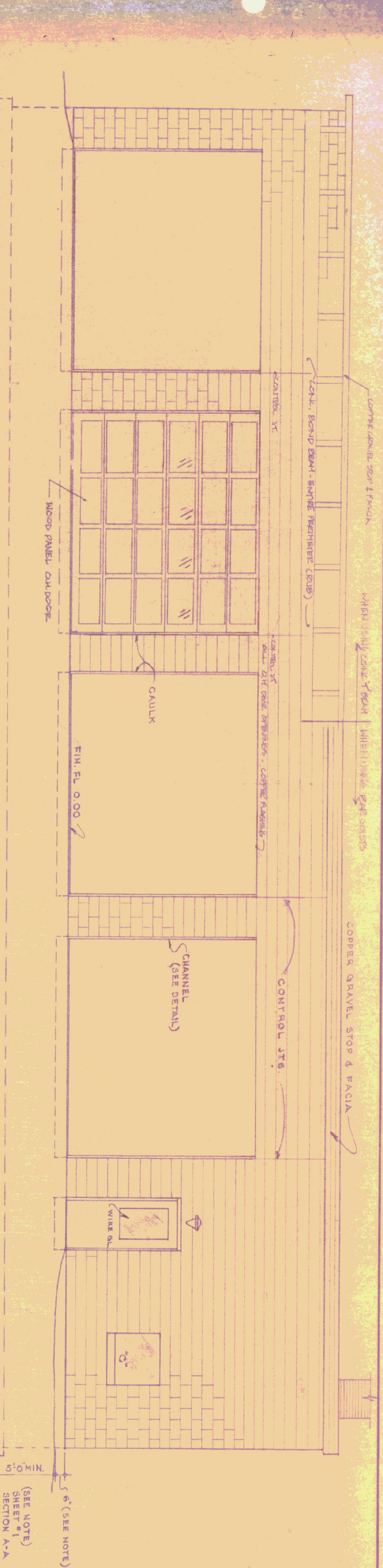


SECTION D-D AT ALL 'A', 'C' & 'D' WINDOWS



SECTION SCALE 1/2" = 1'-0"

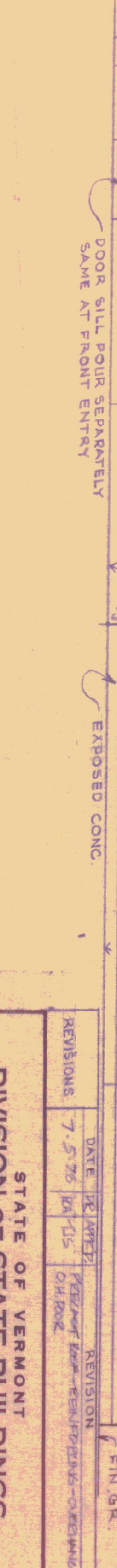
FRONT ELEVATION



GENERAL NOTES

FINISH GRADE SHALL BE MIN. OF 6" BELOW FINISH FLOOR. AT BLDG ON RIGHT LEFT & REAR ELEVATIONS, TO BE SLOPED AWAY FROM BLDG. AND GRADED IN A MANNER TO PREVENT EXCESSIVE WATER FROM COLLECTING AT THE FOUNDATION. ALL EXPOSED CONCRETE SHALL BE FINISHED AND PROTECTED WITH A 1/2" THICK CONCRETE UNDER CONSTRUCTION JOINTS SHALL HAVE A "V" GROOVE "D" BELOW FIN. GRADE. CAULK ALL JOINTS BETWEEN MASONRY AND WOOD OR METAL.

LEFT END ELEVATION



ELEVATIONS SCALE: 1/4" = 1'-0"

DATE	DESIGNED BY	DWG. NO.
10-18-74		A2
DRAWN BY	APPROVED BY	OF
STUDIO SELEN INC.		

REVISIONS	DATE	BY	REVISION
7	7-5-75	DL	CHANGES TO CONSTRUCTION JOINTS

STATE OF VERMONT
DIVISION OF STATE BUILDINGS
AGENCY OF ADMINISTRATION
MONTPELIER, VERMONT

Standard Four Bay Highway Garage Bldg.
ELEVATIONS

SCALE: AS NOTED

LOWER SIZE SHALL BE DETERMINED BY EXHAUST SYSTEM MANUFACTURERS REQUIREMENTS AND RECORDS/DRAWINGS.