

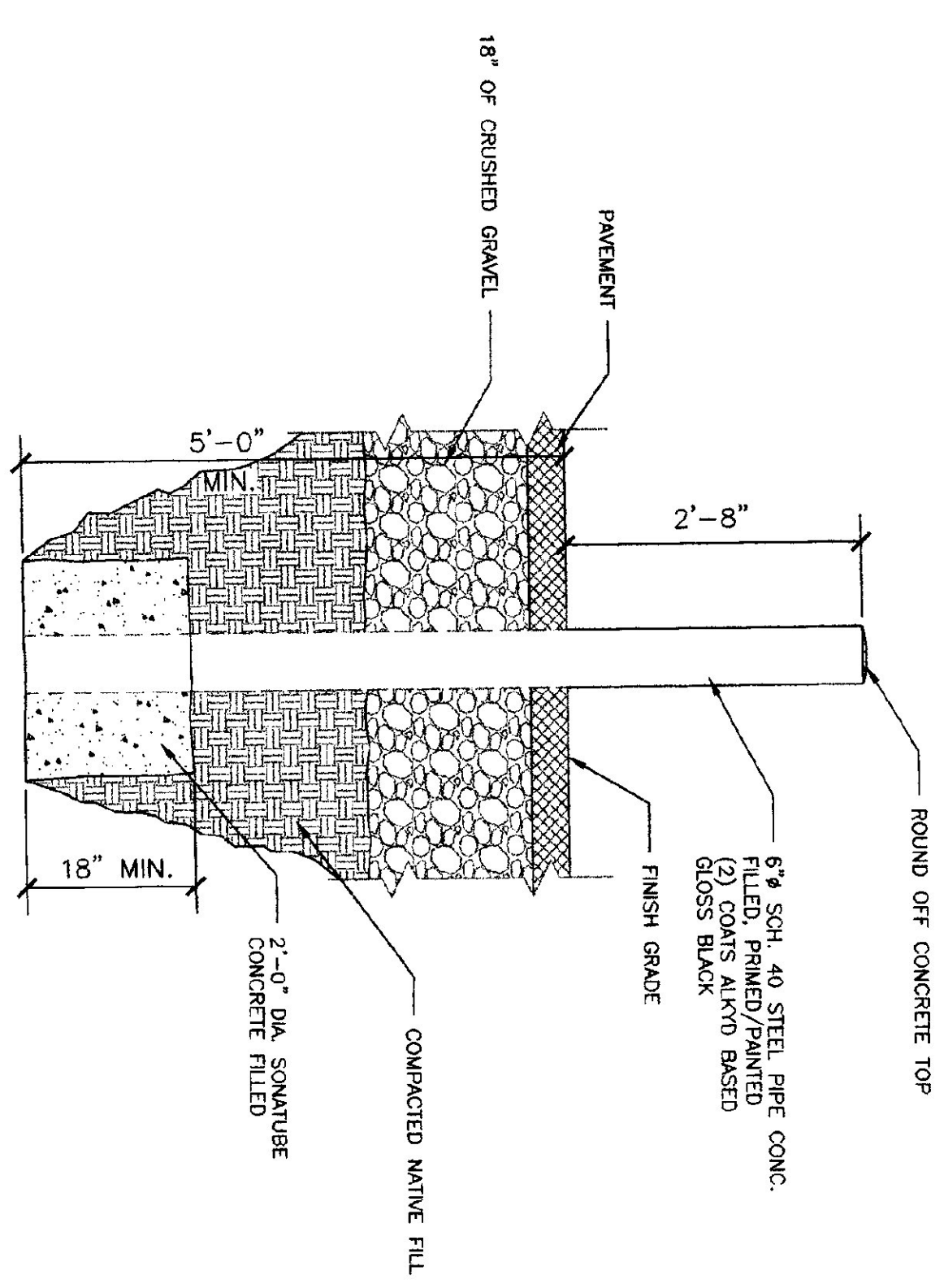
2000 GAL. ABOVE GROUND FUEL STORAGE TANK PAD
SCALE: 1/4" = 1'-0"

NOTES:

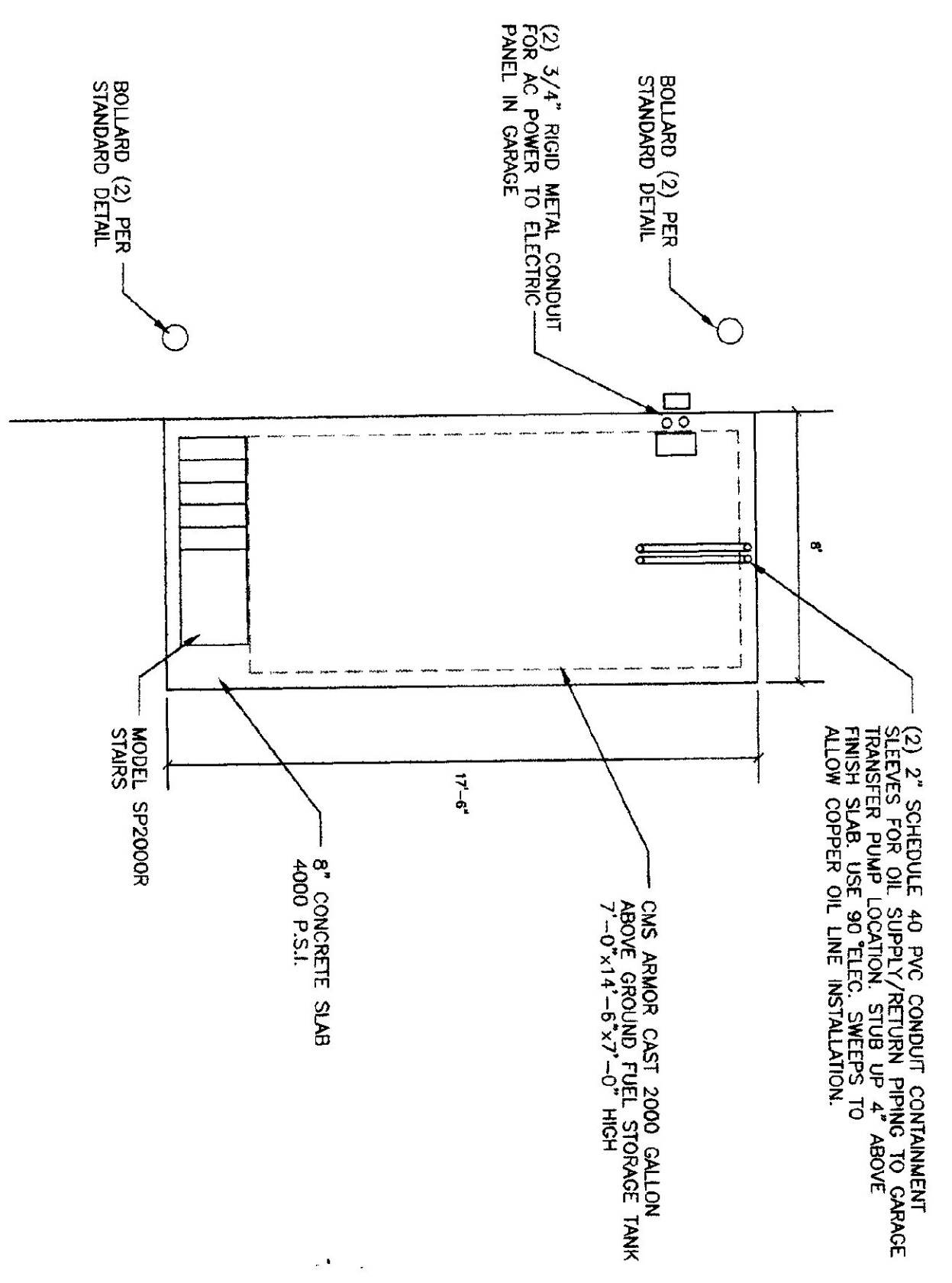
1. BOX CUT NATIVE MATERIAL TO APPROPRIATE SIZE. DEPTH. PLACE (3) 6" LAYERS OF SPECIFIED SUB-BASE AND COMPACT TO 95% PROCTOR.
2. THE REINFORCING STEEL AS NOTED.
3. PLACE OIL SUPPLY CONDUIT ON EAST END 6" FROM EDGE OF SLAB TO INSIDE EDGE OF CONDUIT (CENTERED IN WIDTH OF SLAB)
4. PLACE (2) 3/4" RIGID ELEC. CONDUIT FROM ELEC. PANEL BACK TO S.W. CORNER OF CONCRETE SLAB AS SHOWN ON DRAWINGS.
5. SEAL ALL CONDUITS EXPOSED TO WEATHER TO PREVENT MOISTURE FROM ACCUMULATING IN CONDUIT. USE MECHANICAL SEALS OR APPROVED CAULKING ON EXPOSED CONDUITS OR AROUND FUEL LINES.
6. POUR 4000 P.S.I. CONCRETE AND LIGHT BROOM FINISH.
7. FUEL TANK SLAB TO COMPLY WITH TANK MANUFACTURERS REQUIREMENT.

TANK SPECIFICATIONS/ACCESSORIES:

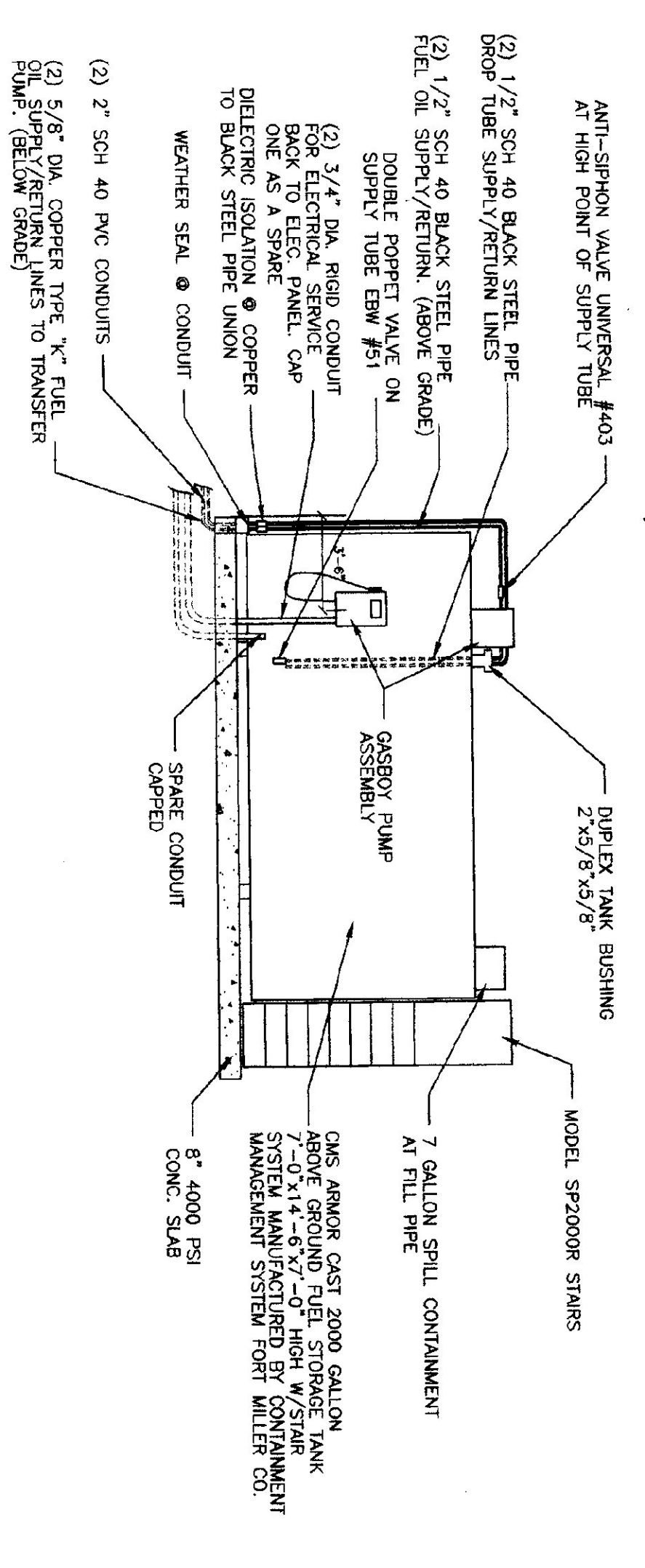
1. CWS ARMOR CAST 2000 GALLON ABOVE GROUND FUEL STORAGE TANK
2. MORRISON 818 CLOCK GAUGE
3. LOCKABLE FLIP CAP TO STICK TANK
4. TANK GAUGE STICK
5. KRUEGER MECHANICAL LEAK DETECTION GAUGE
6. 2" DIA. UPDRAFT VENT OR PRESSURE VACUUM VENT 8 OZ. W/PIPE
7. (2) 6" DIA. EMERGENCY VENT 8 O.Z.
8. GASSBOY #9922 1/2 HP COMMERCIAL PUMP W/REMOTE LOD REGISTER
9. GASSBOY REMOTE REGISTER TANK MOUNT KIT
10. INTERNAL FILTER ADAPTER & ELEMENT
11. 3/4"x1/2" CURB HOSE
12. 3/4" DIA. SWIVEL
13. 3/4" SAFE BREAK COUPLING
14. AUTO NOZZLE
15. 1 1/2" DIA. ANGLE CHECK VALVE, SINGLE POPPET
16. 1 1/2" DIA. EXTERNAL EMERGENCY VALVE
17. 1 1/2" DIA. STAINLESS STEEL FLEX CONNECTOR
18. DOUBLE TAP BUSHING 4" WITH (2) 3/4", OR (1) 2"
19. SLOTTION TUBE
20. 4" COUPLING
21. STAIR: MODEL SP2000R



BOLLARD DETAIL
SCALE: 3/4" = 1'-0"



PLAN VIEW
SCALE: 1/4" = 1'-0"



2000 GAL. ABOVE GROUND FUEL STORAGE TANK
SCALE: 1/4" = 1'-0"

NOTE:
OIL LINES & ELECTRICAL CONDUIT SECURELY FASTENING TO TANK MANUFACTURERS INSTRUCTIONS CONTRACTOR TO MAKE ALL CONDUIT AND ELECTRICAL CONNECTIONS BETWEEN PANEL/PUMP AND REGISTER PER MANUFACTURERS INSTRUCTIONS



REVISIONS	DATE	BY	APPR.

SCALE: AS NOTED
DATE: JULY 1999
DRAWN BY: B. MCAVOY
APPR. BY: *[Signature]*

WAITSFIELD
MAINTENANCE FACILITY
FUEL TANK