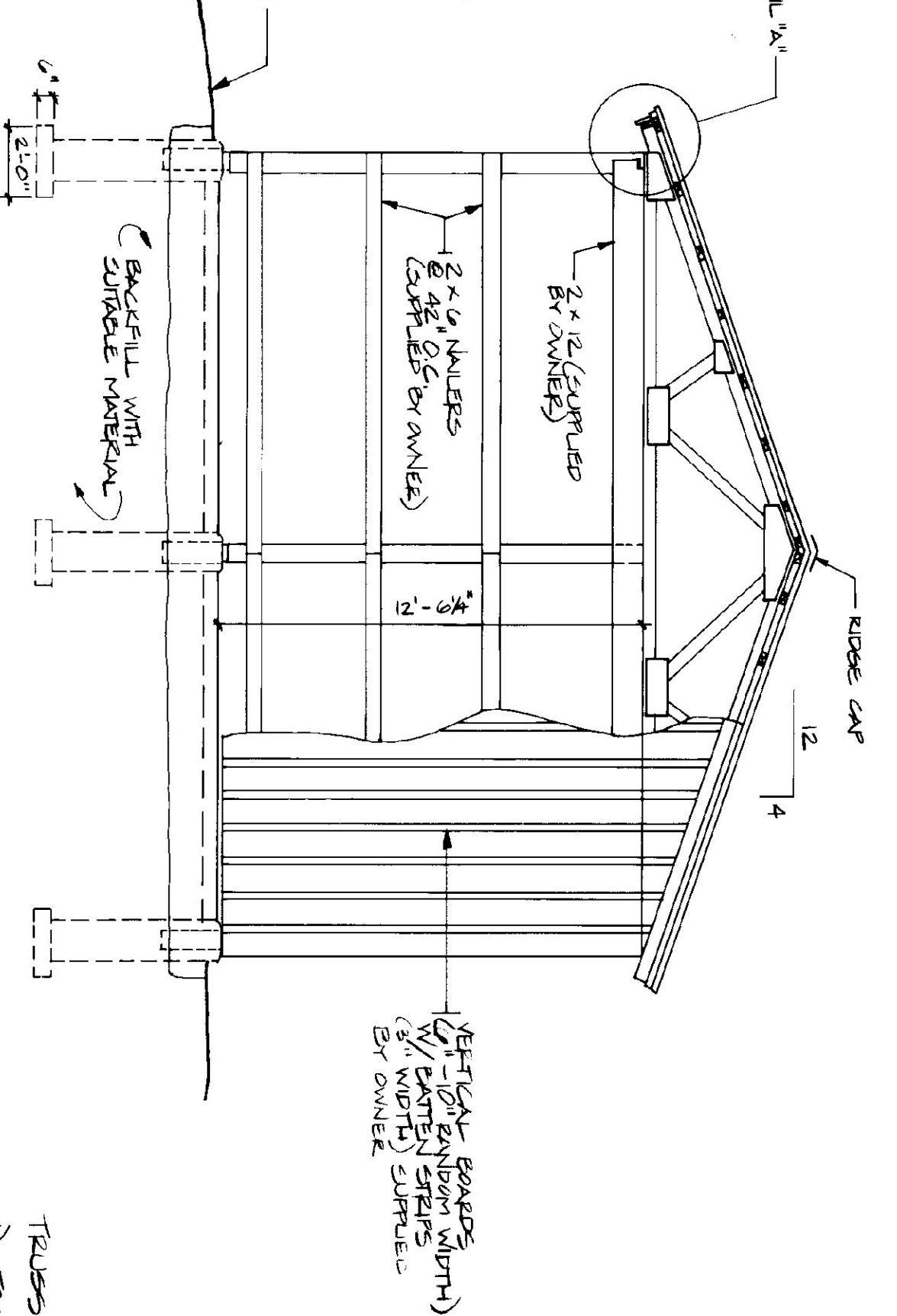


FRONT ELEVATION

SCALE: 1/4" = 1'-0"

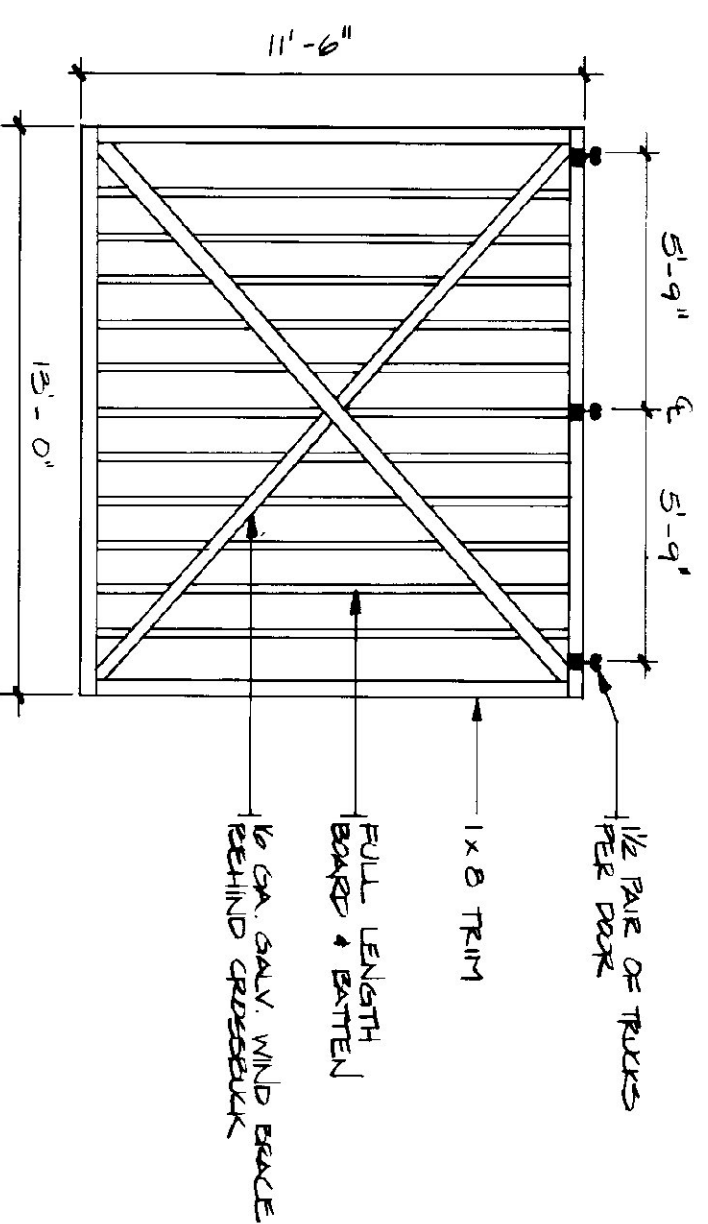
- LUMBER SUPPLIED BY OWNER**
- 2x6 HEADERS
 - 2x6 NAILED
 - 2x12 BEAMS
 - 2x12 BRACING
 - 8x8x12 COLUMNS
- CONTRACTOR REQUIRED FOR ALL OTHER LUMBER



END ELEVATION

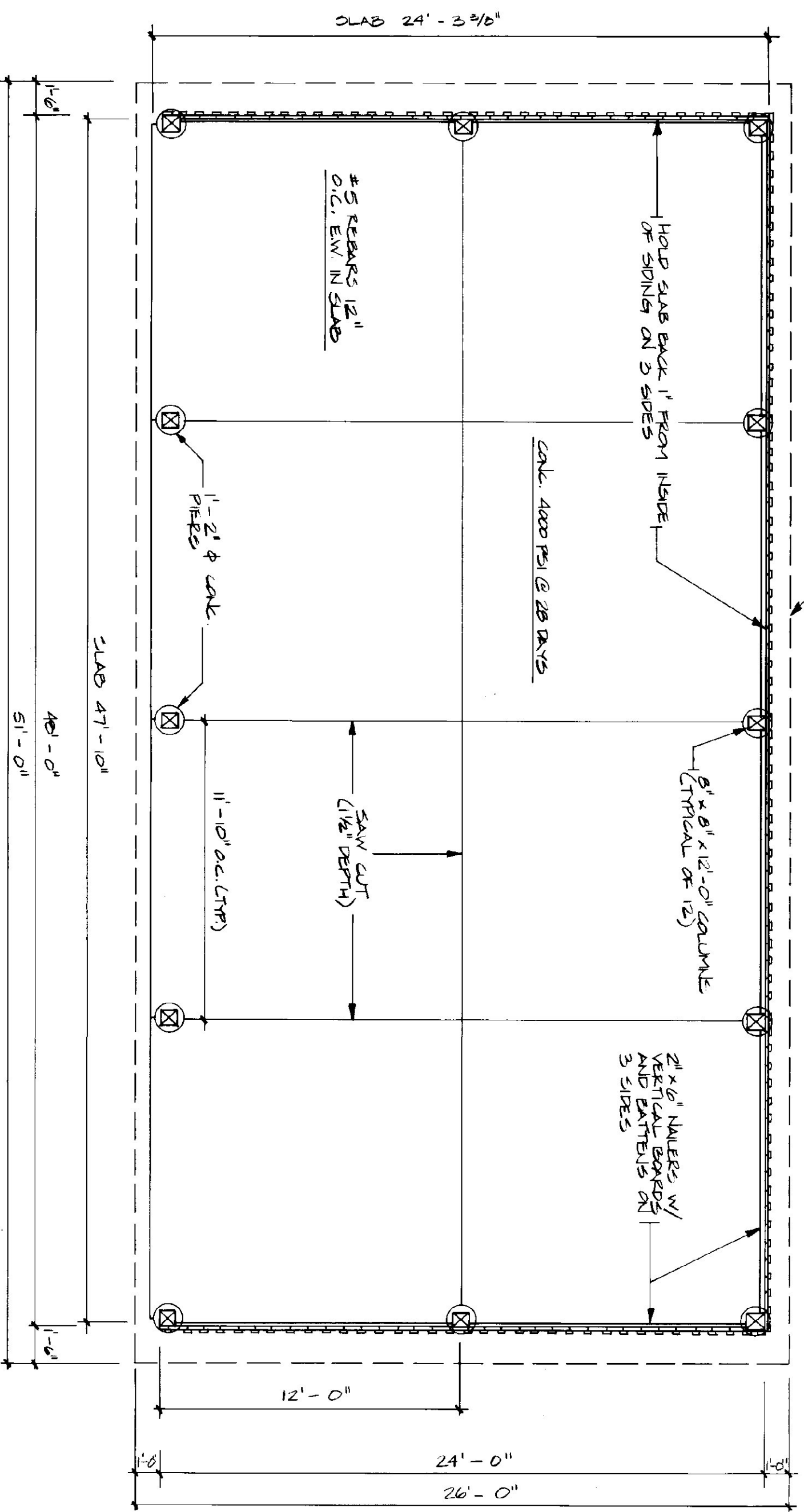
SCALE: 1/4" = 1'-0"

- TRUSS NOTES:**
- 1) TRUSS MANUFACTURER TO PROVIDE THE REST OF STATE BUILDINGS APPROVE A SET OF ENGINEERED & STAMPED DRAWINGS FOR APPROVAL PRIOR TO TRUSS MANUFACTURE.
 - 2) TRUSS MANUFACTURER TO PROVIDE THE CONTRACTOR WITH ALL NECESSARY INSTALLATION INSTRUCTIONS FOR PROPER TRUSS INSTALLATION, INCLUDING, LIFTING, ETC.
 - 3) TRUSS DESIGN LOADS IN ACCORDANCE WITH THE 1987 B.O.C.A. FOR VERMONT.
- MINIMUM LOADS:**
- LIVE — PER 1987 B.O.C.A. FOR VT (50 P.S.F. MIN.)
 - DEAD — AS CALCULATED FROM TRUSS & ROOF MATERIALS
 - WIND — 25 P.S.F.
 - DIAGONAL WIND BLOWING PER TRUSS MANUF.



DOOR DETAIL

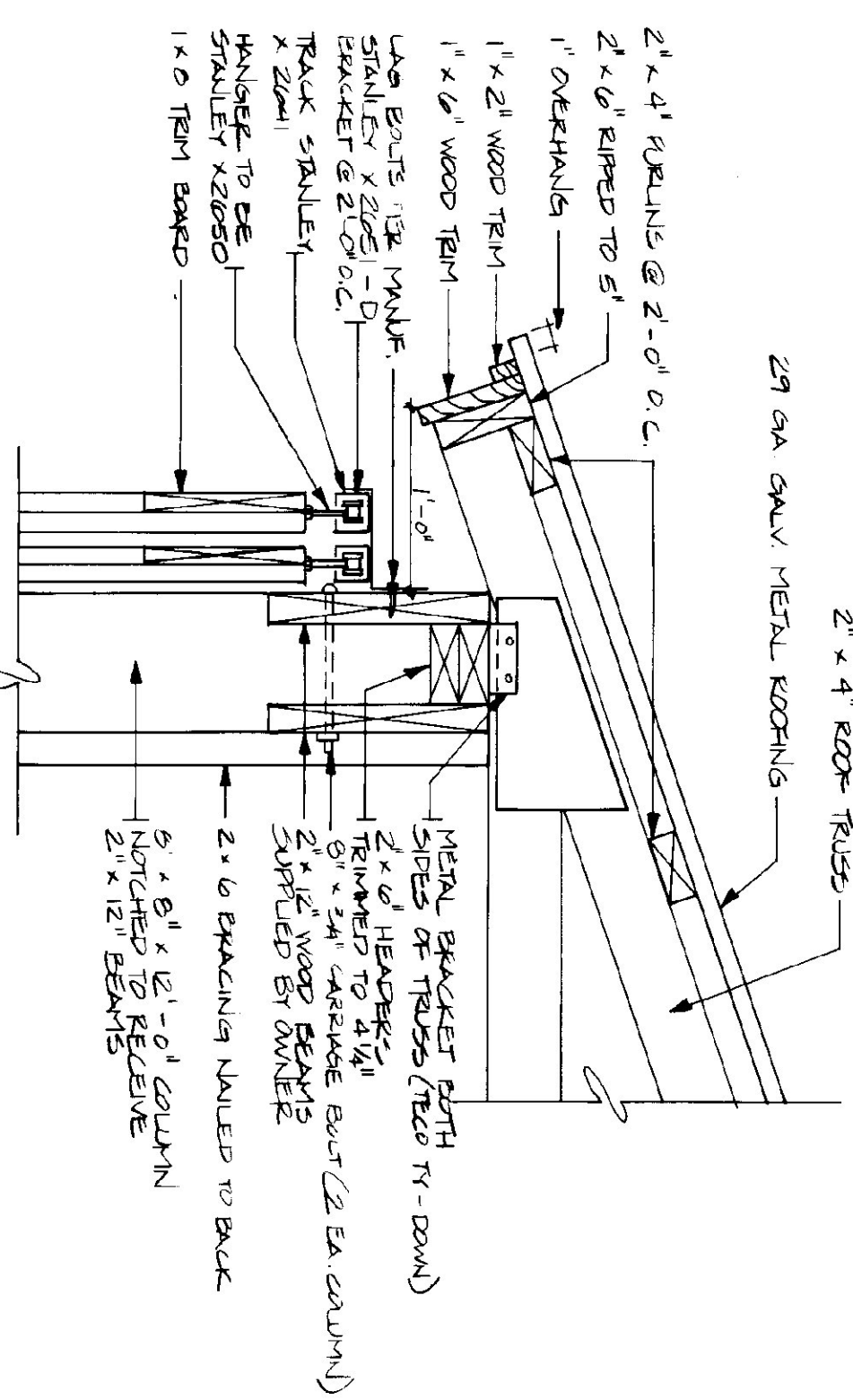
N.T.S. (TYPICAL OF 4)



SHED PLAN

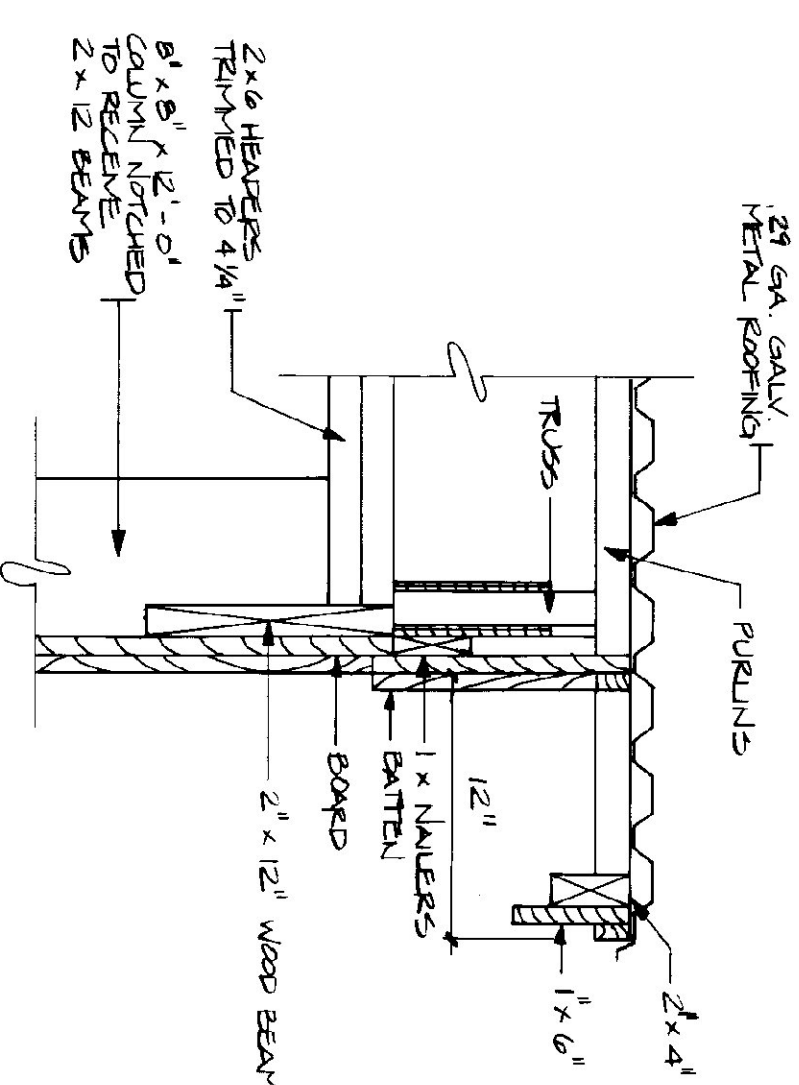
SCALE: 1/4" = 1'-0"

NOTE:
USE #5 REBAR @ 1'-0" O.C. EACH WAY WITH 2" COVER



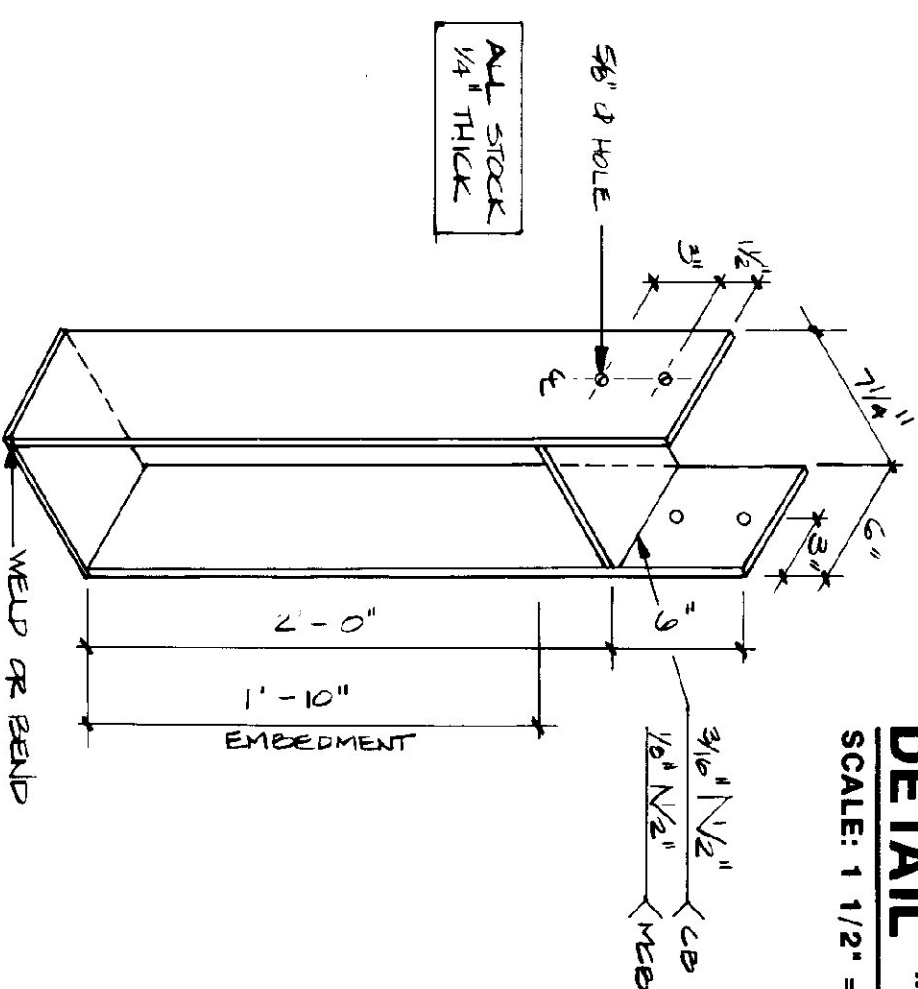
DETAIL "A"

SCALE: 1 1/2" = 1'-0"



RAKE DETAIL

SCALE: 1 1/2" = 1'-0"



COLUMN BASE ANCHOR

SCALE: 1 1/2" = 1'-0"

- LUMBER NOTES:**
- 1) FRAMING MEMBERS TO BE KILN DRIED CONSTRUCTION GRADE STRIKE SHS 19% MOISTURE CONTENT.
 - 2) PLATES & NAILED IN CONTRACT WITH: CONCRETE TO BE C.A. 40 TENSILE.
 - 3) BOARD & BATTEN SIDING TO BE NATIVE ROUGH SAWN WHITE PINE. BOARDS TO BE RANDOM WIDTH 6" - 10" BATTEN WIDTH 5".
 - 4) BOARD SIDING & BATTEN STRIPS TO BE FULL LENGTH WITH NO HORIZONTAL JOINTS.
 - 5) ALL NAULS TO BE GALVANIZED.
- FINISH NOTES:**
- 1) ALL BOARDS & BATTENS TO BE STAINED WITH ONE COAT ON ALL SIDES PRIOR TO INSTALLATION.
 - 2) AFTER INSTALLATION EXTERIOR SIDING TO RECEIVE ONE APPROVAL COAT OF STAIN. STAIN TO BE OLMPIK OIL BASE SEMI-TRANSPARENT DECORATIVE BROWN # 715.

ALTERNATE NO. 1

STATE OF VERMONT			
DEPARTMENT OF STATE BUILDINGS			
AGENCY OF ADMINISTRATION			
VERMONT			
MONTPELIER			
24'X48' STORAGE SHED			
AGENCY OF TRANSPORTATION			
MORRISVILLE MAINTENANCE FACILITY			
MORRISVILLE	SCALE	REVISIONS	DWG. NO.
DATE: 15, 1993	AS NOTED		A-2
DRAWN BY: B. HEAVY	APPROVED BY: F. L. LATT		3 OF 3