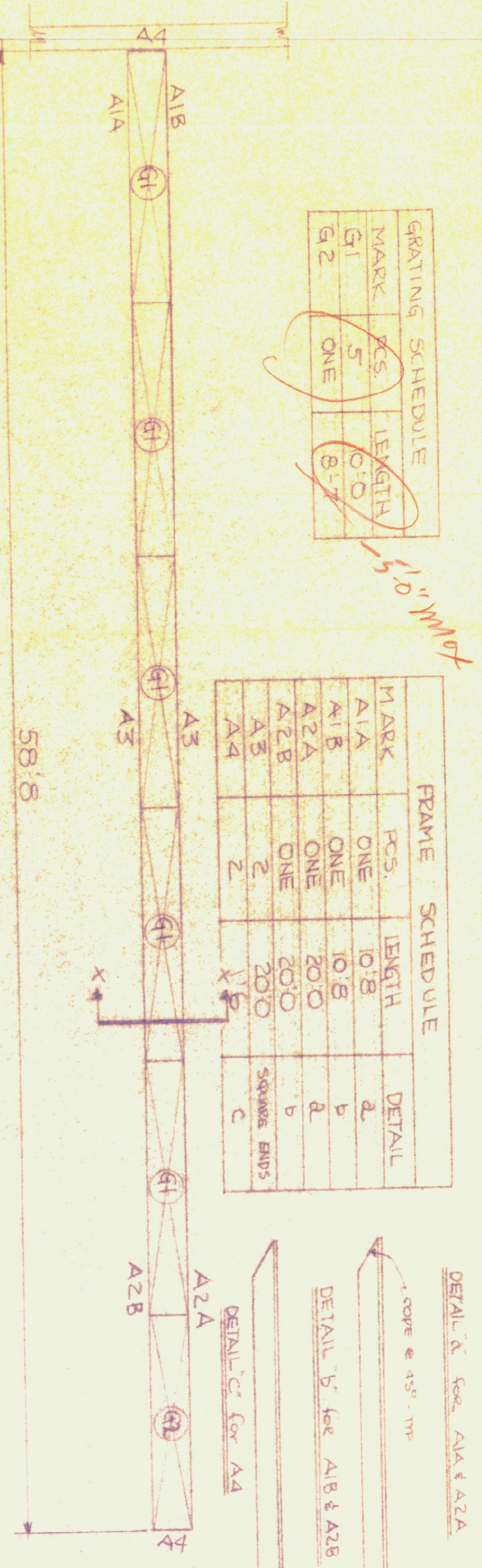


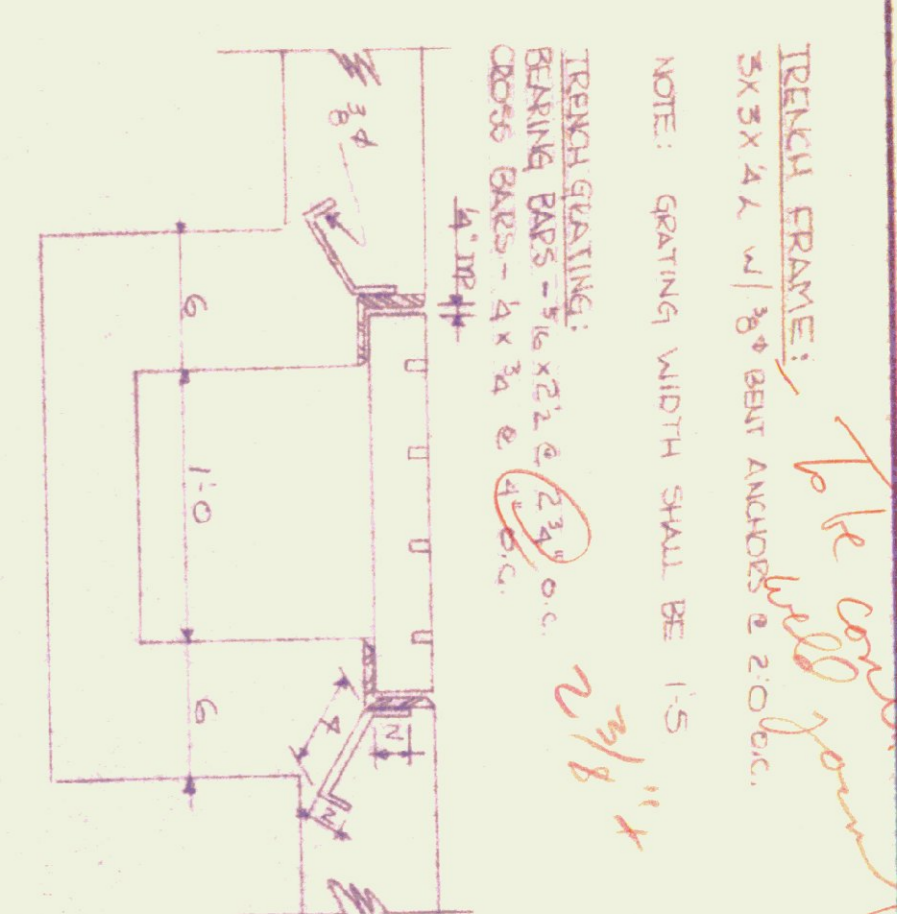
GRATING SCHEDULE		
MARK	PCS.	LENGTH C/D
G1	5	6'-0"
G2	ONE	8'-7"

FRAME SCHEDULE			
MARK	PCS.	LENGTH	DETAIL
A1A	ONE	10'-8"	a
A1B	ONE	10'-8"	b
A2A	ONE	20'-0"	a
A2B	ONE	20'-0"	b
A3	2	20'-0"	SQUARE ENDS
A4	2	X	C

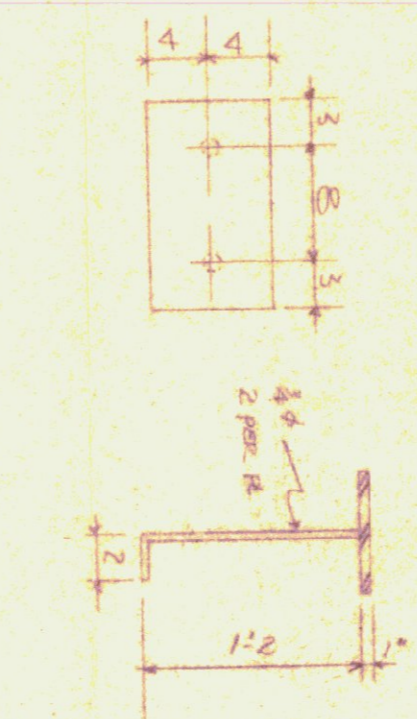
DRAINAGE TRENCH PLAN
BUILDING NO. 2 AS SHOWN
BUILDING NO. 113 OPPOSITE HAND



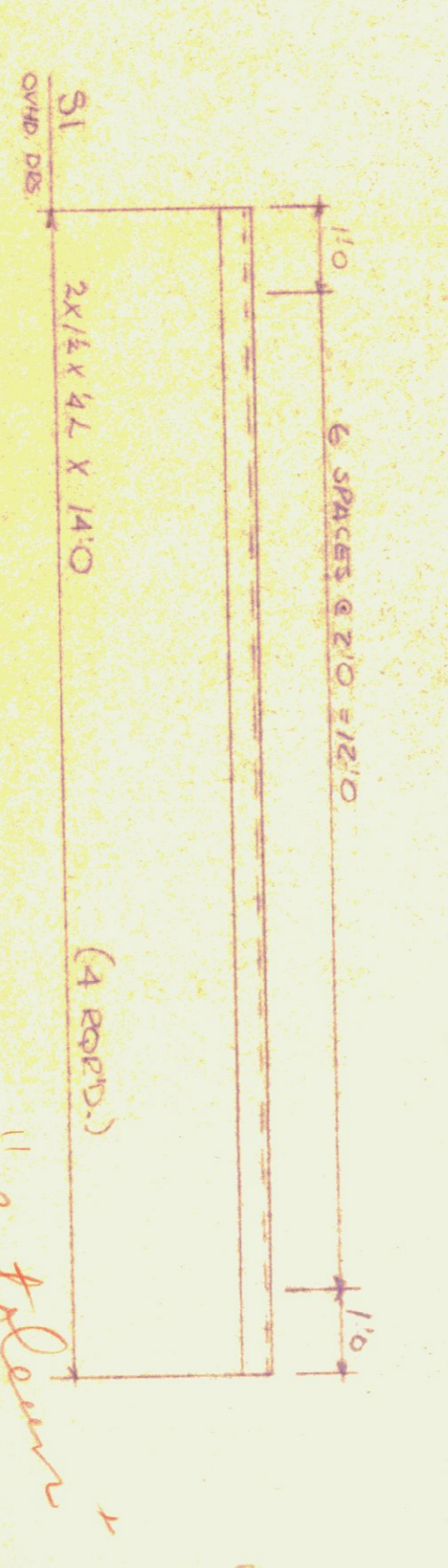
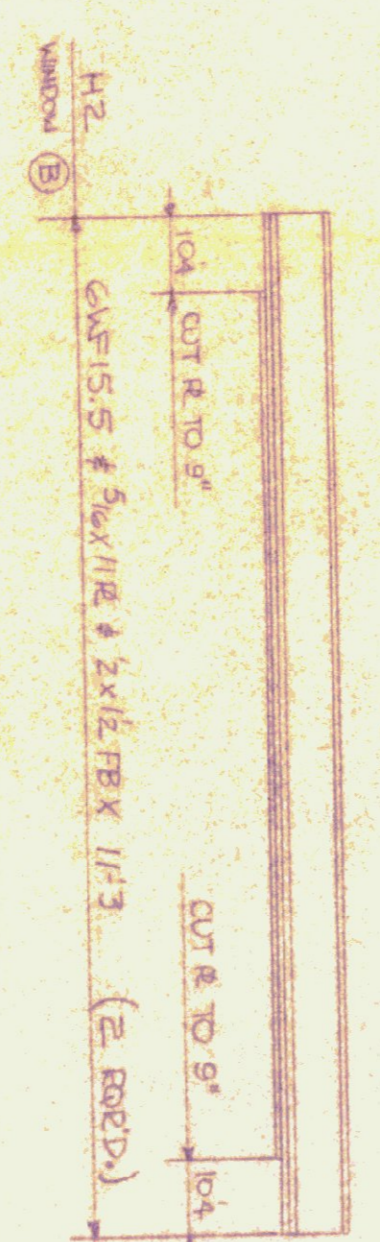
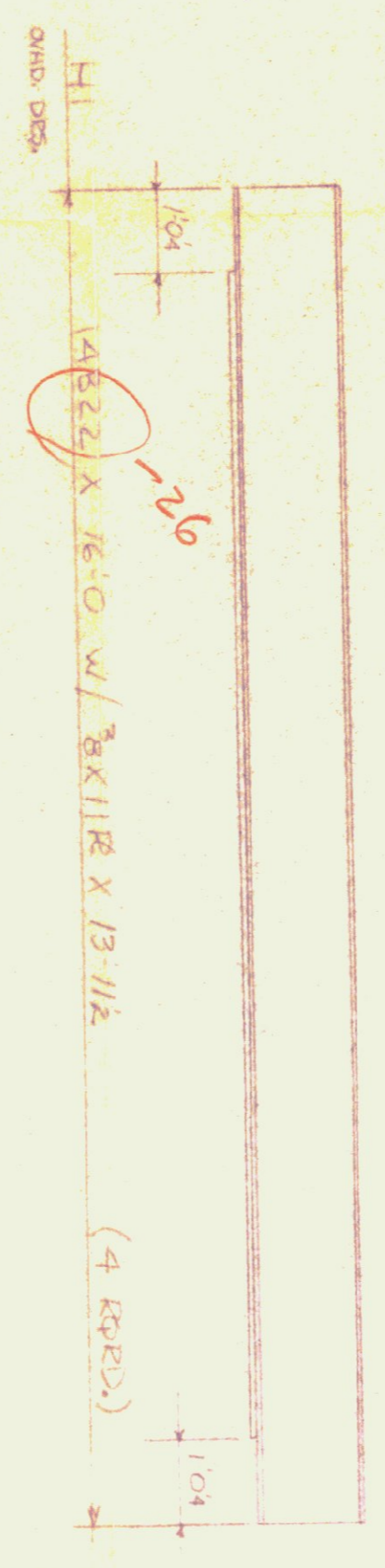
DETAIL 'a' for A1A & A2A
DETAIL 'b' for A1B & A2B
DETAIL 'c' for A4



TRENCH FRAME: 3x4 L w/ 3/8" B&T ANCHORS @ 2'-0" O.C.
NOTE: GRATING WIDTH SHALL BE 1'-5"
TRENCH GRATING: 1'-5" WIDE
TRENCH BARS - 3/16" x 2 1/2" @ 2'-3" O.C.
CHOCOS GRATES - 4' x 2' @ 2'-0" O.C.



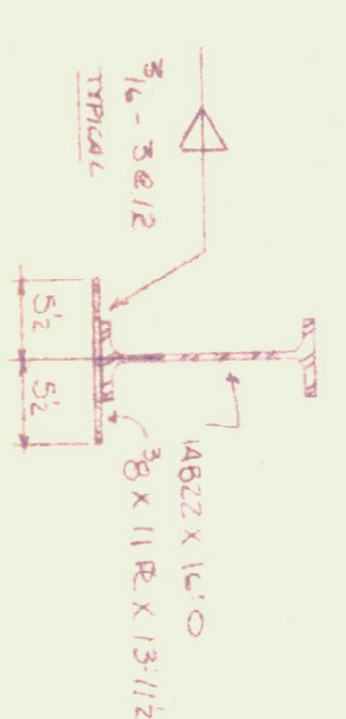
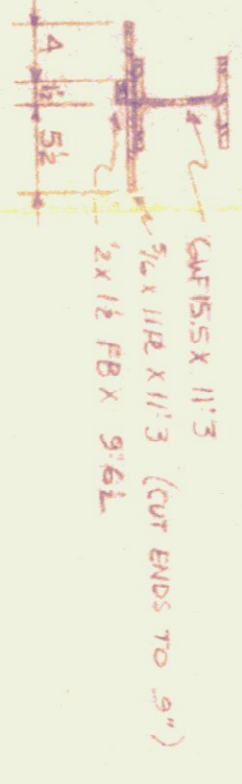
JPI - 22 RORD
JOIST BEARING PLATES



GENERAL SHOP NOTES:

1. SHOP COAT (1) PAINT SHALL BE NO. 7740 ZINC CHROM. PRIMER AS MANUFACTURED BY ONE BRADLEY LAB, INC. BATTLEBORO, VT.
2. MATERIAL SHOWN FOR ONE BUILDING ONLY.
3. THREE BUILDINGS REQUIRED.

Not shown



PLAIN MATERIAL

1. EAVE ANGLE AT JOIST EXTENTIONS
2. BEARING PLATES FOR "H1"

Approved by [Signature] 3/19/68
for general 3/19/68

BENNINGTON TOWN WOODS, INC.	SCALE	DATE
440 MAIN ROAD - BENNINGTON, VT.	AS SHOWN	7-0-61
CODLEY CONSTRUCTION CO.	DESIGNED BY	7-0-61
MONTPELIER, VERMONT	REVISION	
STANDARD GUAGE BLDG - VERMONT DEPT. HIGHWAYS		
1. NO MOUNTPELIER 2. ISLAND ROAD 3. WESTFIELD, ALL VT.		
DATE: 6/7/65	APPROVED BY	DRAWING NUMBER
	VT STATE ENGRS. DIVISION	70-21