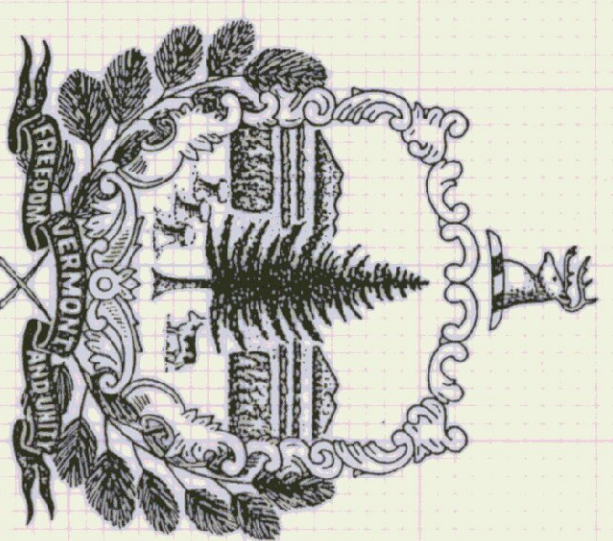


AGENCY OF TRANSPORTATION
STATE OF VERMONT
SALT AND SAND SHEDS
MIDDLESEX, VERMONT

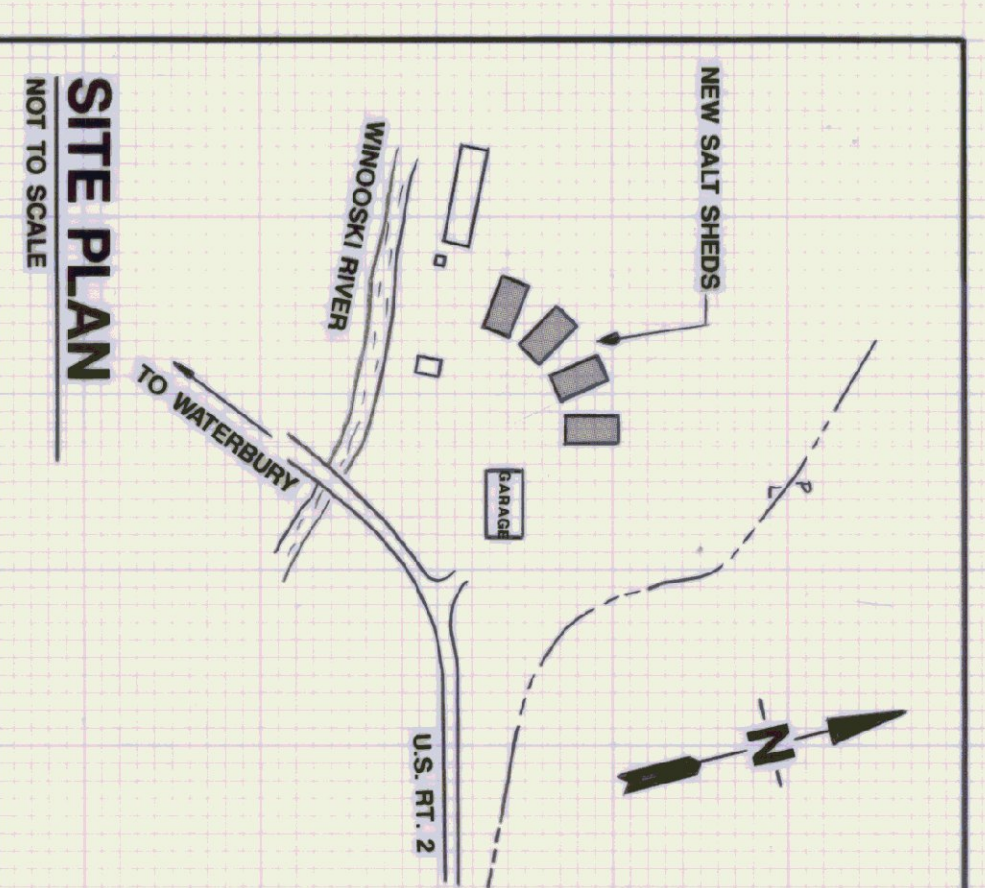
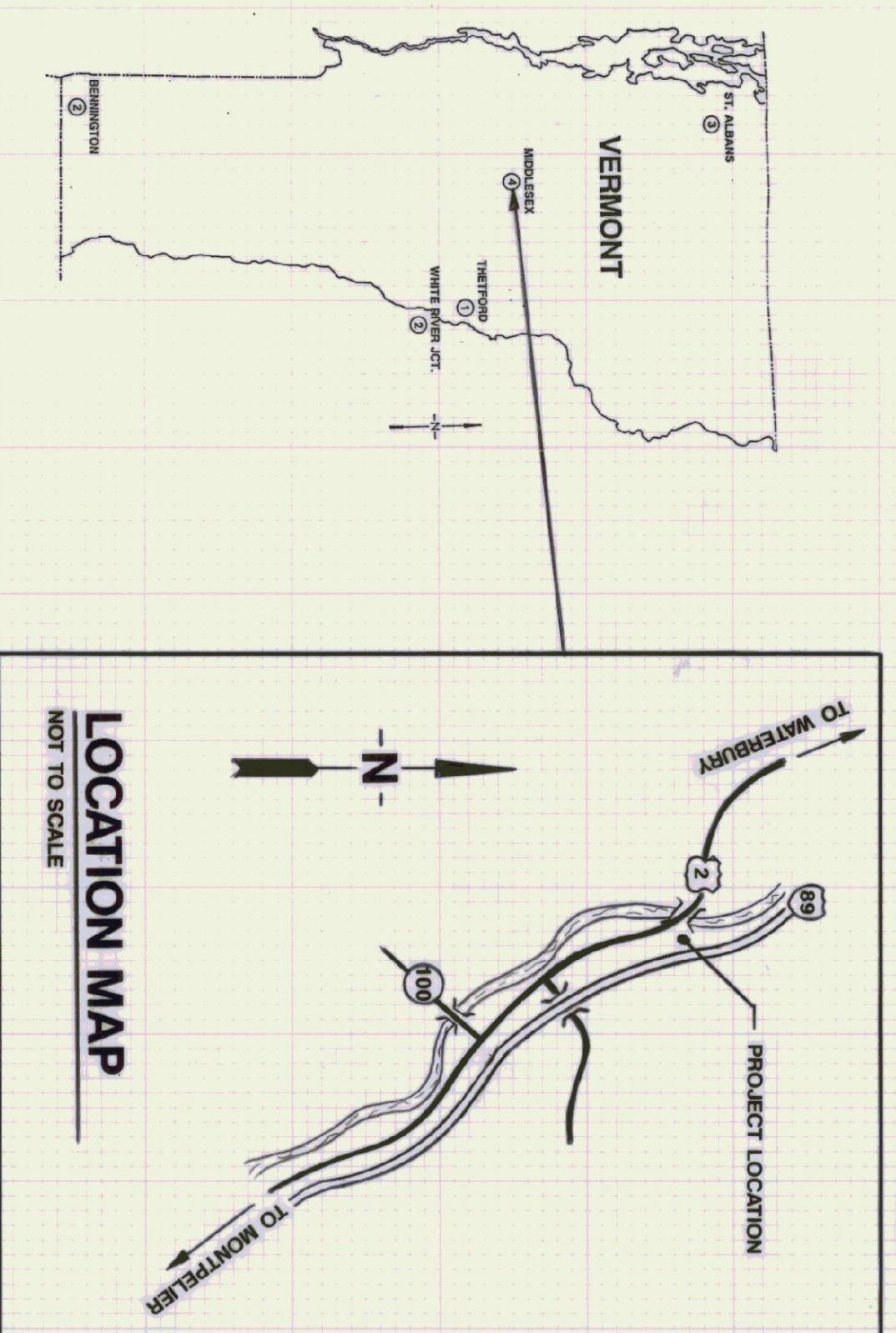
SEPTEMBER 5, 1991

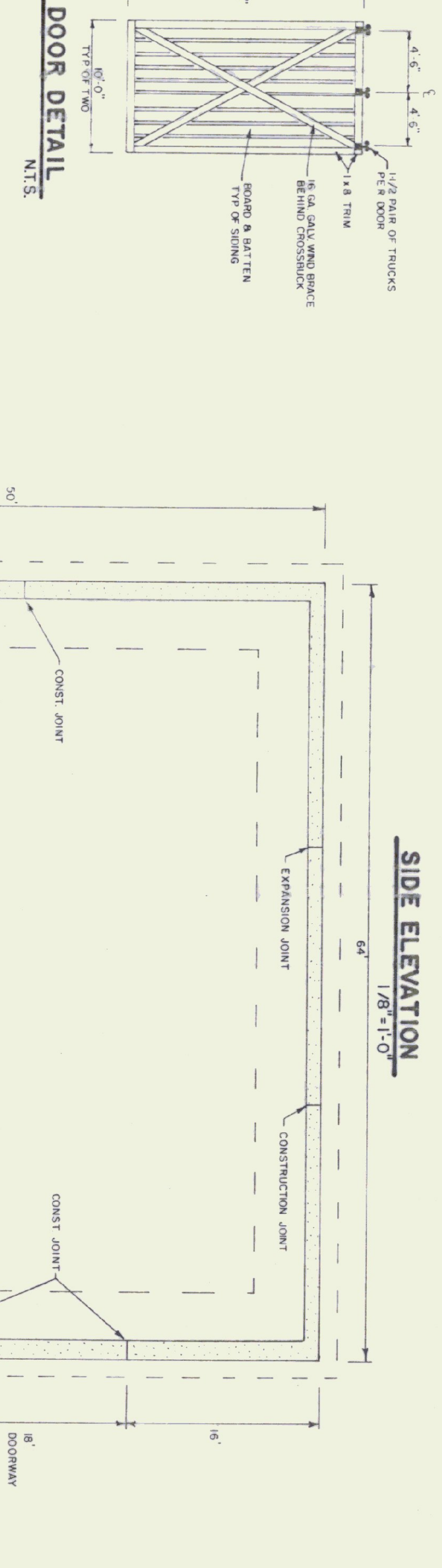
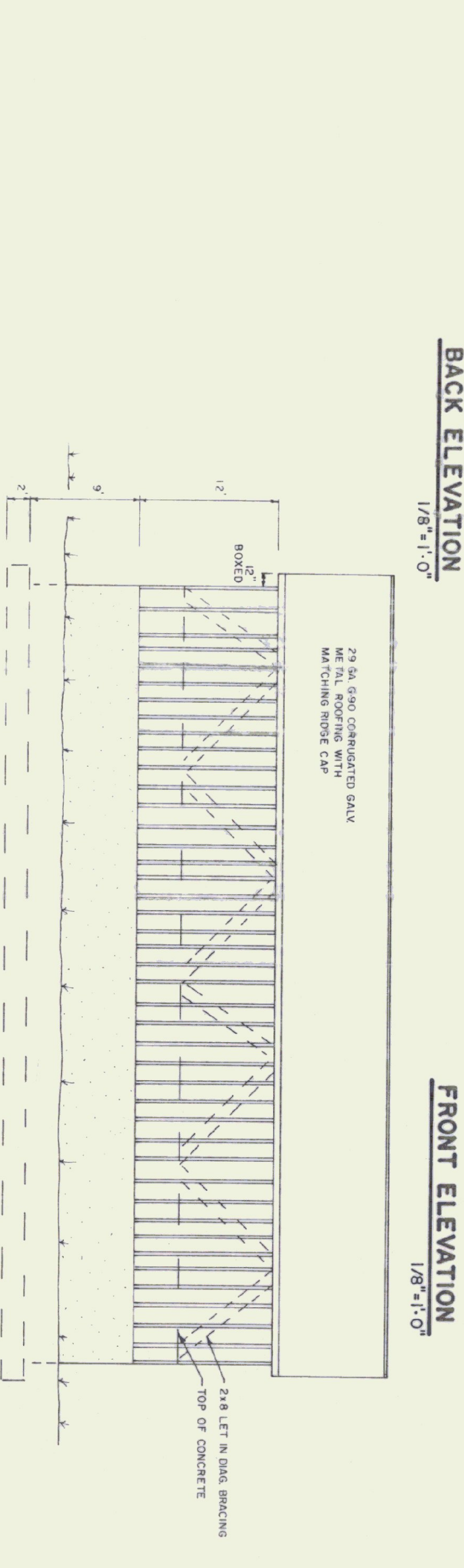
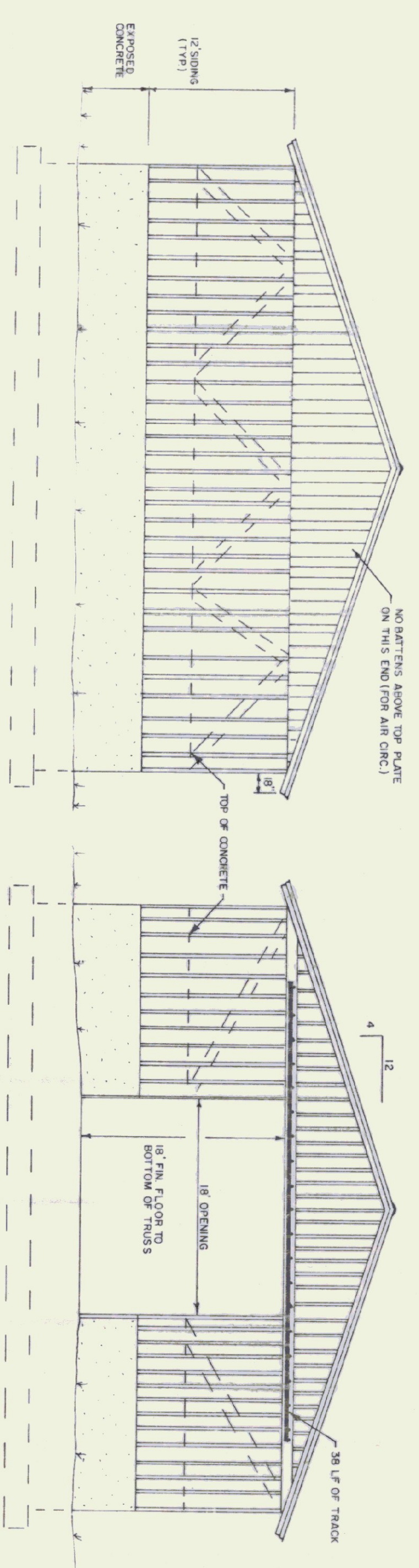
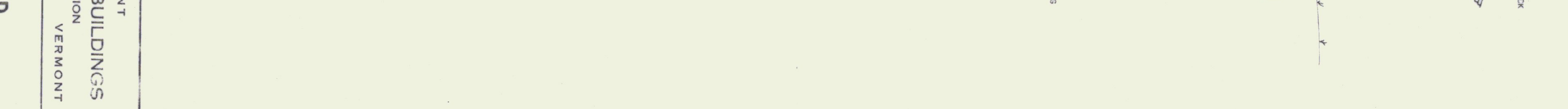
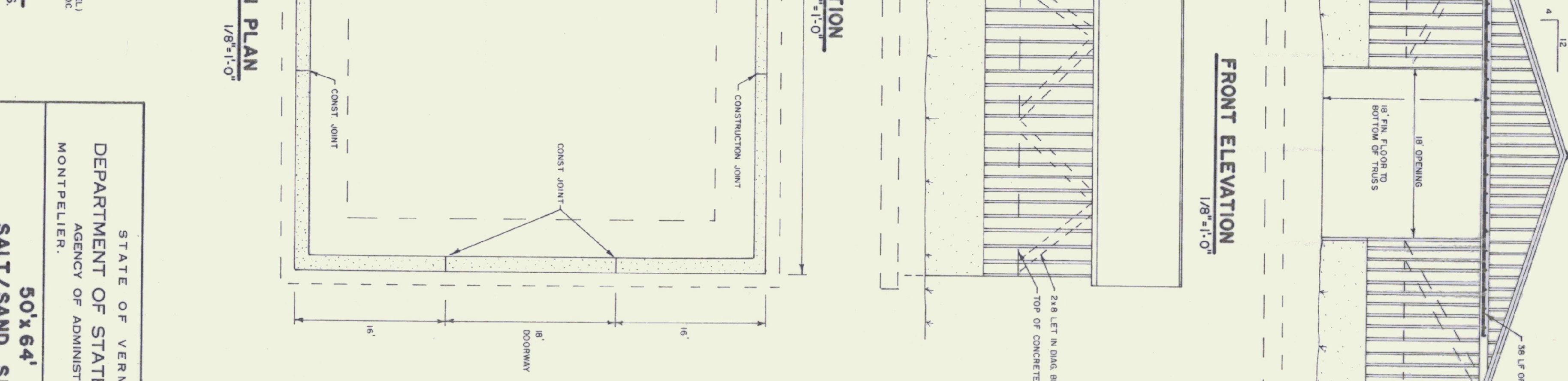
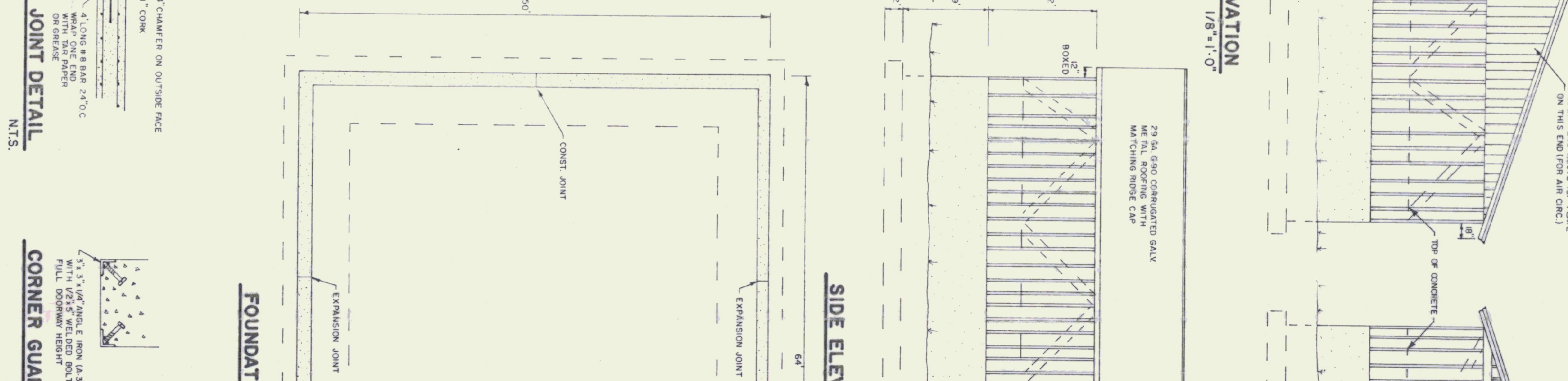
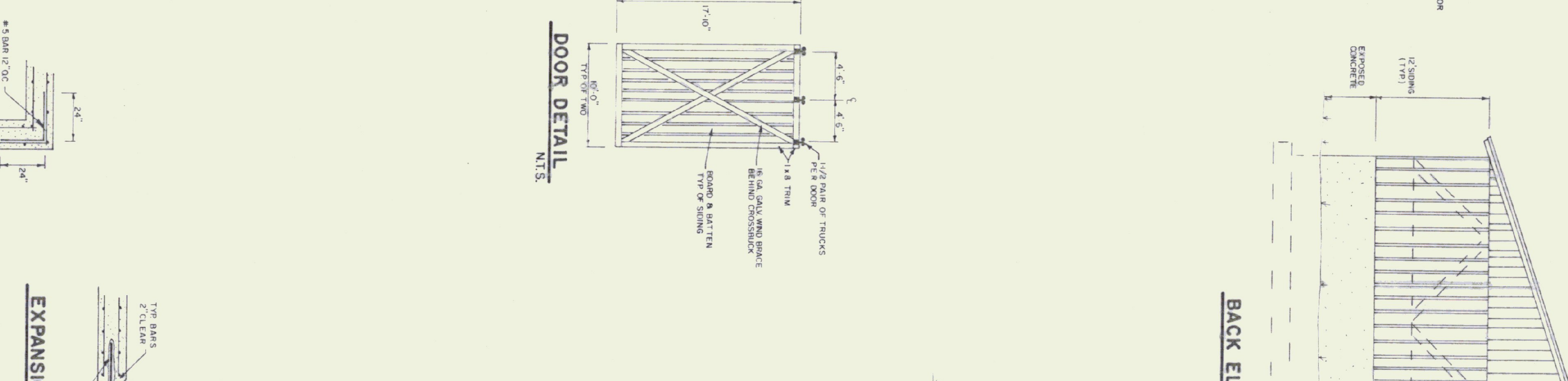
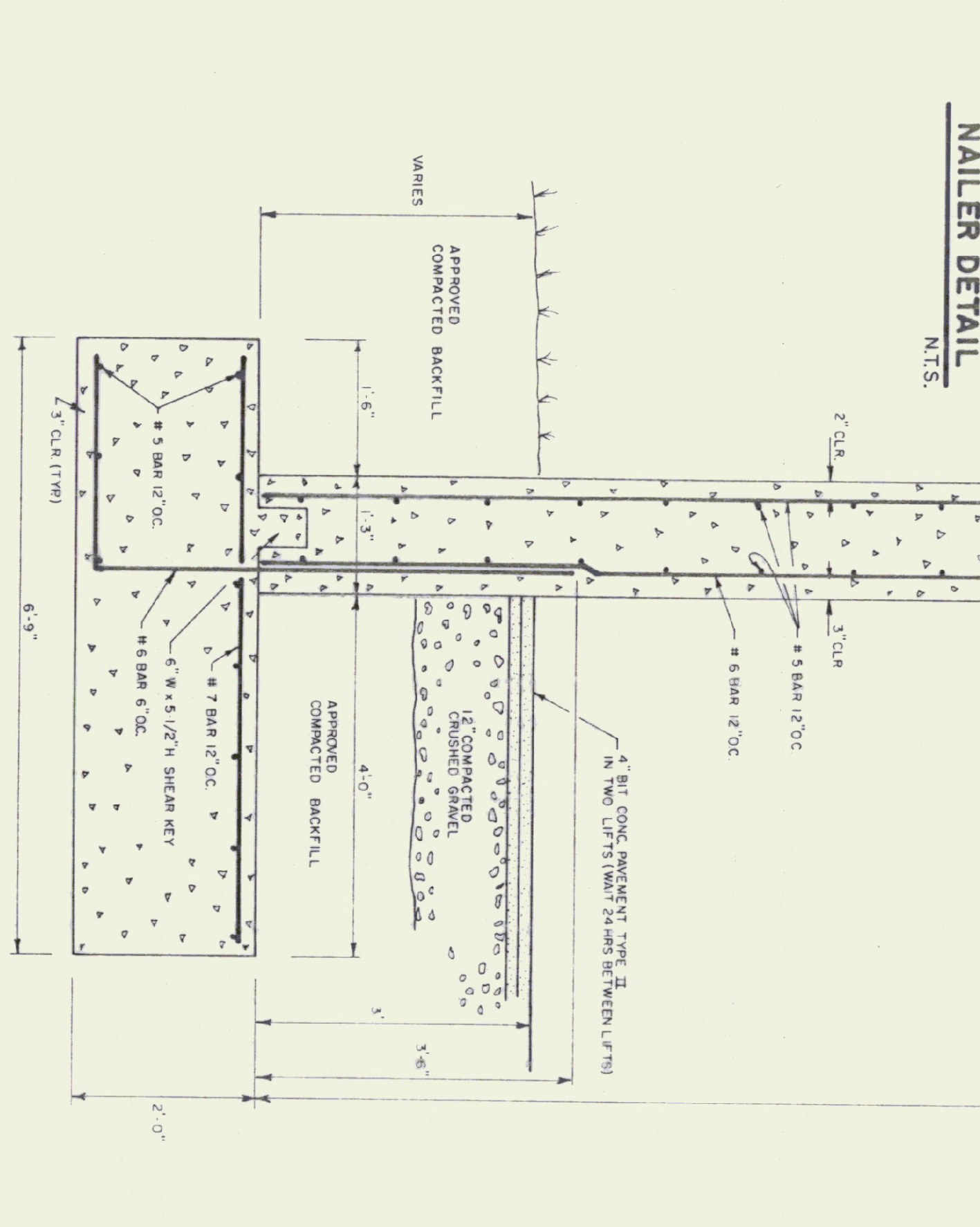
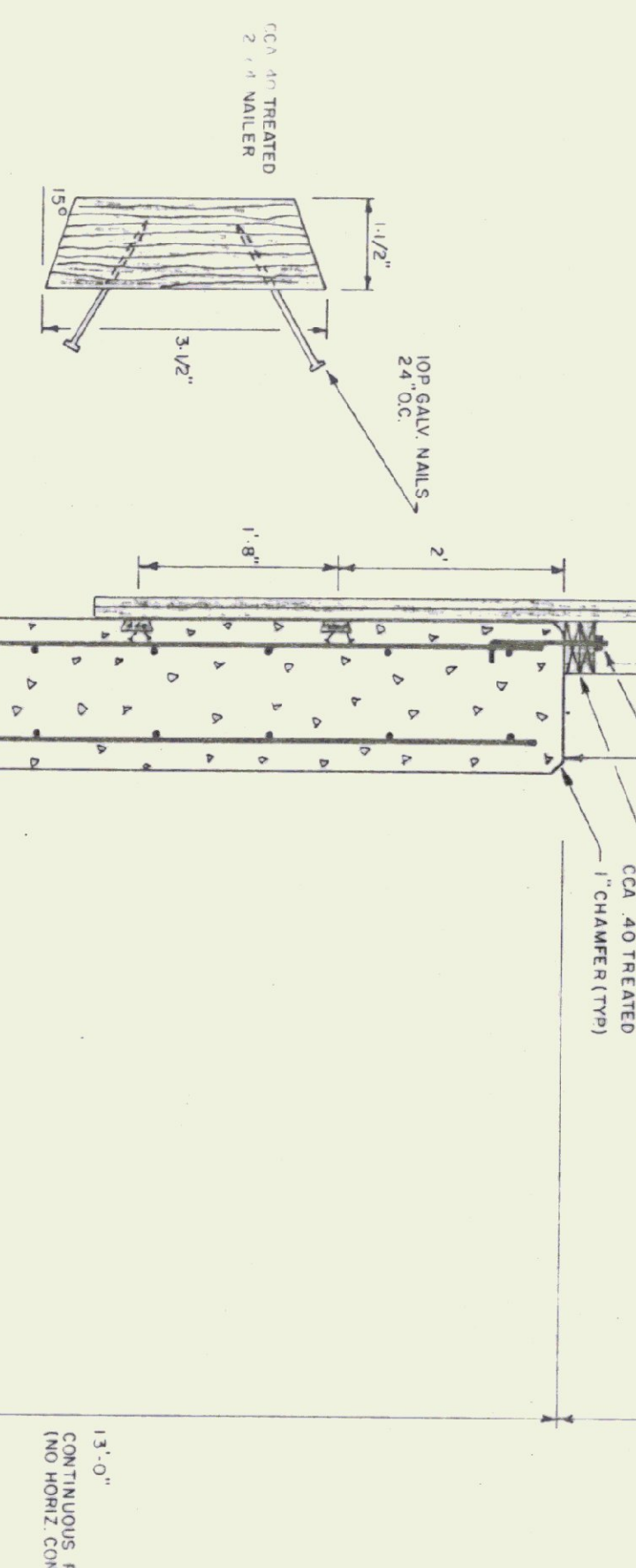
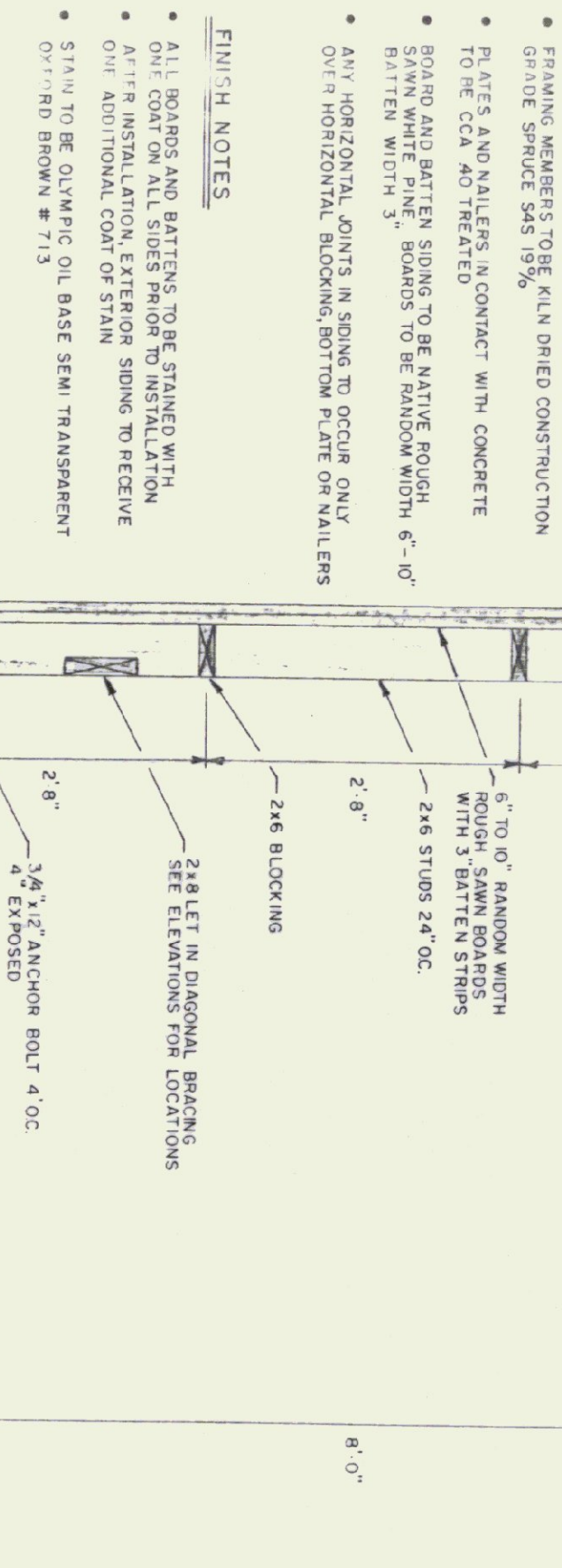
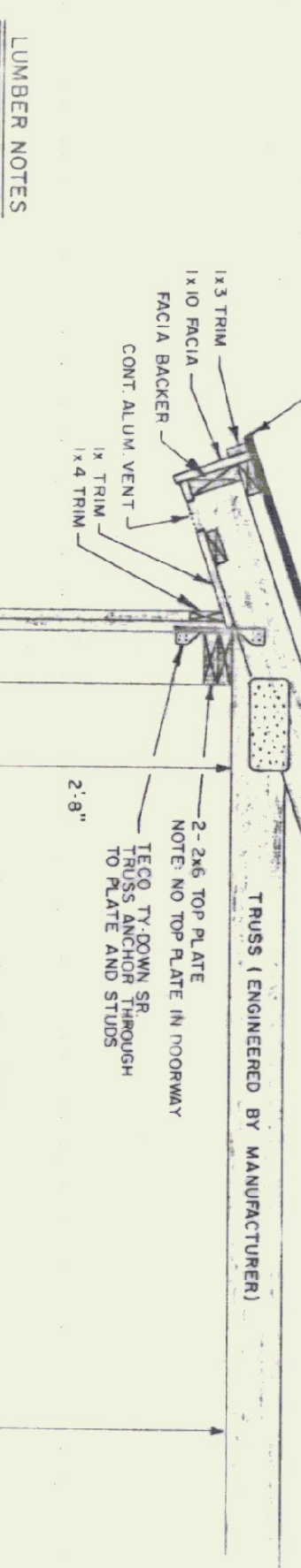
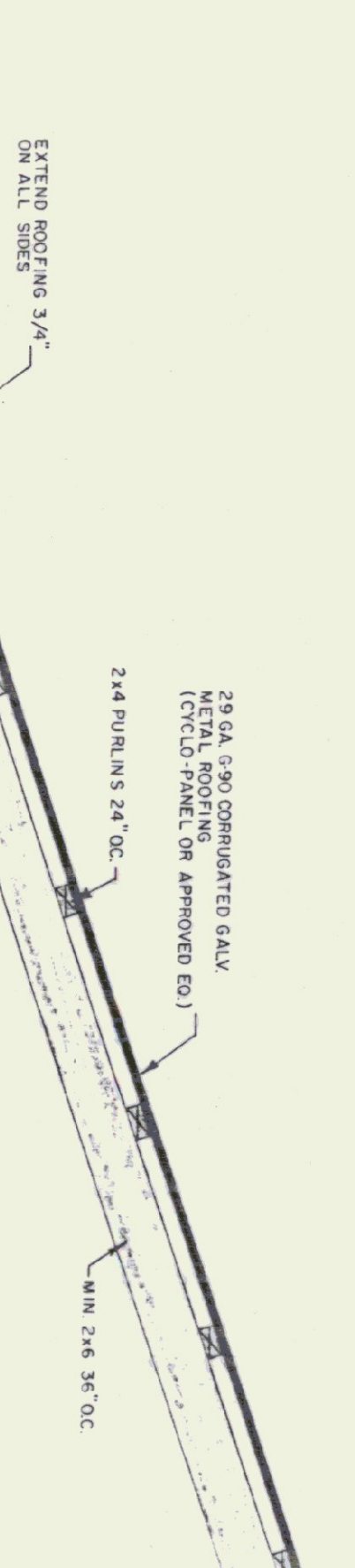
AGENCY OF TRANSPORTATION
133 STATE STREET
MONTPELIER, VERMONT 05602
PATRICK J. GARAHAN, SECRETARY

AGENCY OF ADMINISTRATION
DEPARTMENT OF STATE BUILDINGS
2 GOVERNOR AIKEN AVENUE
MONTPELIER, VERMONT 05602
JOHN J. ZAMPIERI, COMMISSIONER



GOVERNOR HOWARD DEAN





STATE OF VERMONT		DEPARTMENT OF STATE BUILDINGS	
MIDDLESEX MAINTENANCE FACILITY		MIDDLESEX VERMONT	
DATE: SEPT 5, 1991	SCALE: AS NOTED	REVISIONS:	DWG. NO. 1 OF 1
DRAWN BY: S.K. JANANWICZ	APPROVED BY: [Signature]		