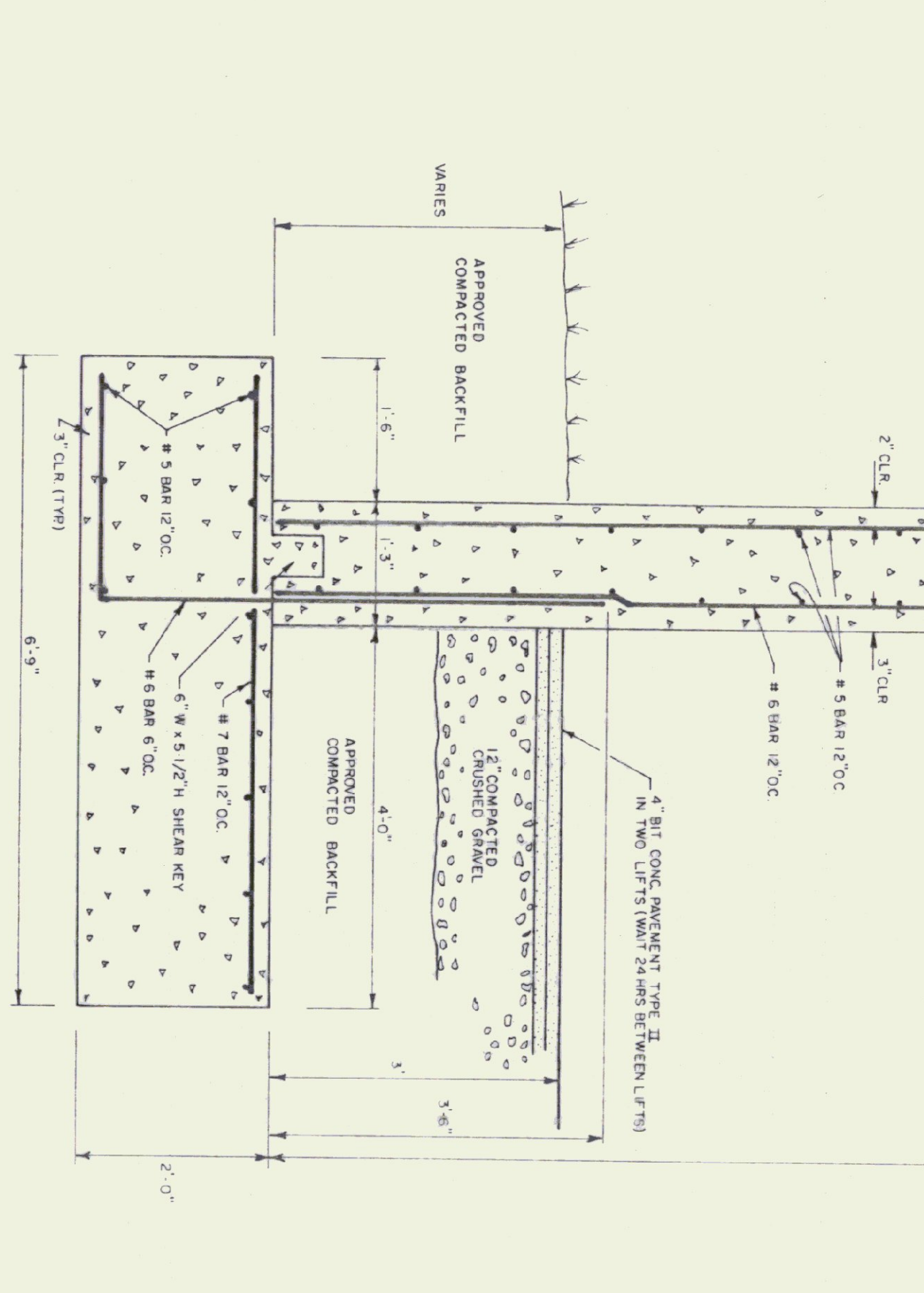


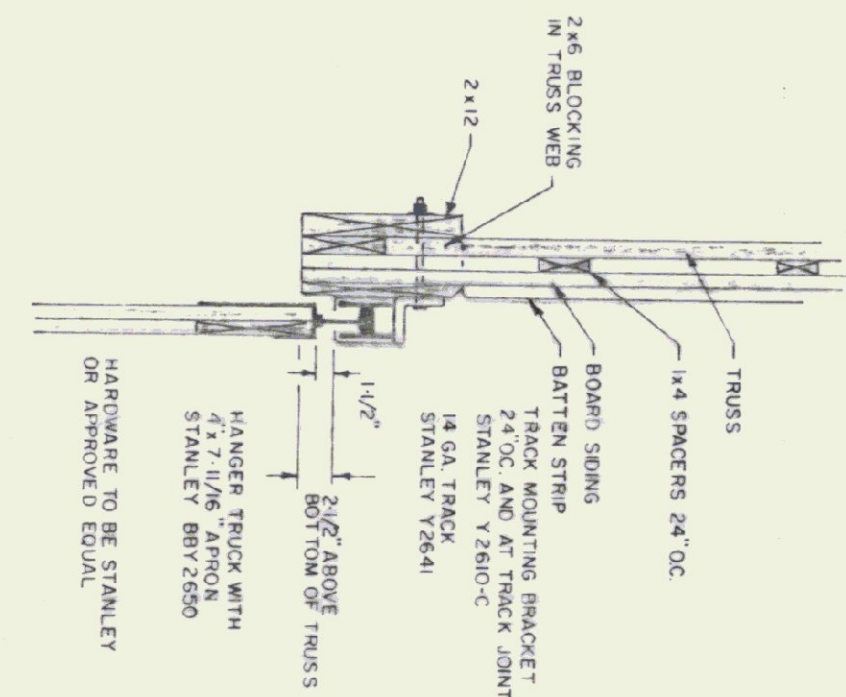
NAILER DETAIL
N.T.S.



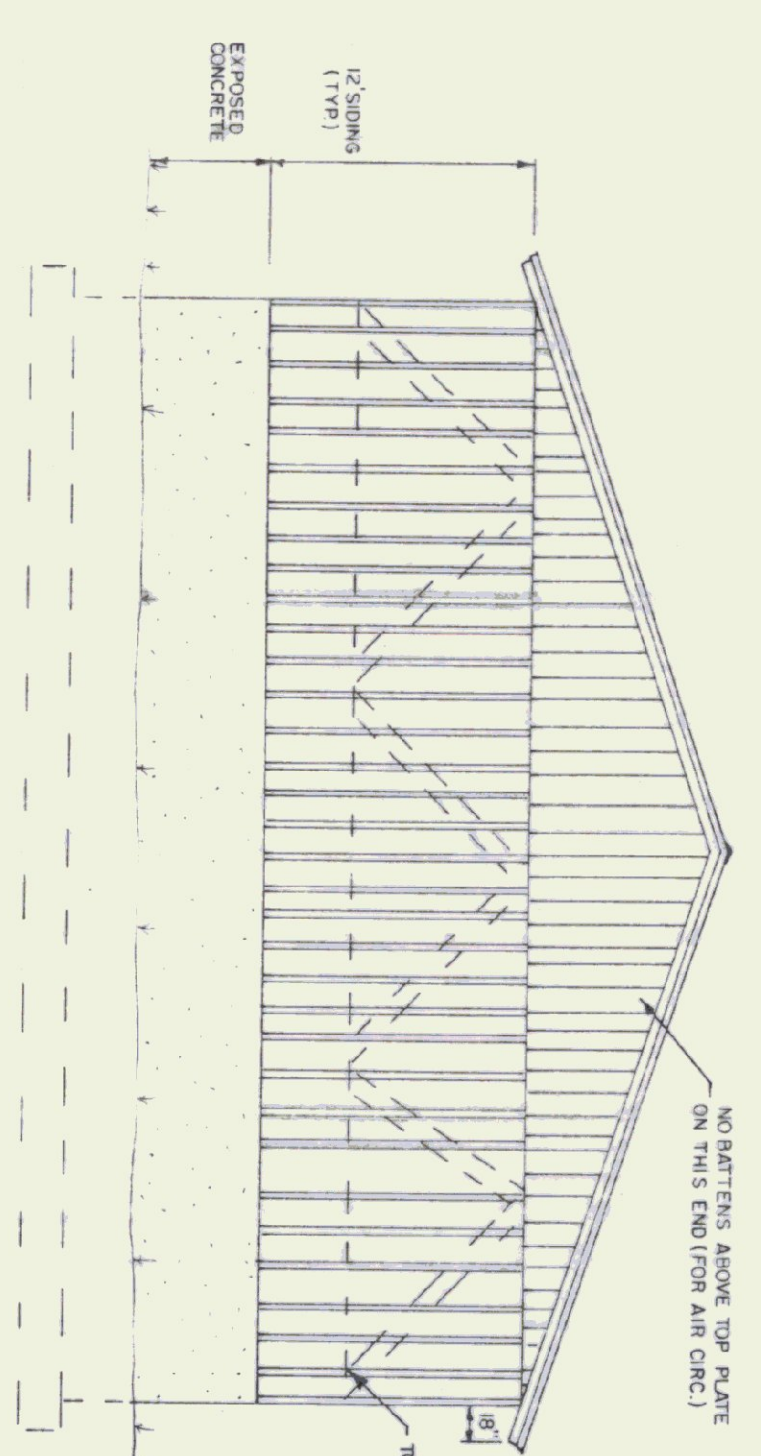
TYPICAL WALL SECTION
3/4\"/>

- CONCRETE NOTES**
- ALL CONCRETE TO BE 3000 PSI AT 28 DAYS WITH MAXIMUM SLUMP OF 4"
 - EXPOSED WALLS TO BE DRESS FINISHED
 - 1/2" V JOINTS IN EXPOSED FACE OF CONST JOINTS
 - 3/4" CHAMFER IN OUTER FACE OF EXPANSION JOINTS
 - L IRON CAST INTO WALL CORNERS AT DOOR OPENINGS
 - RE BAR TO BE CONTINUOUS THROUGH CONST JOINTS
 - NO HORIZONTAL CONST JOINTS IN WALLS
 - NO CONST OR EXP JOINTS REQUIRED IN FOOTINGS
 - ALL RE BAR TO BE GRADE 60
 - CONTRACTOR TO LEAVE NO METAL WITHIN 1" OF SURFACE OF CONCRETE
 - ALL RE BAR TO BE WELDED TO ALL OTHERS AND IN ALL TIE HOLES WITH AN APPROVED NON SHIMMING GRID
 - RE BAR TO BE STORIED ON BLOCKING 4" MIN ABOVE GROUND
 - CONCRETE SUPPLIER TO PROVIDE TEST CYLINDERS
 - FOR TESTING BY OWNER
 - CONCRETE SUPPLIER TO CONDUCT ON SITE AIR TEST

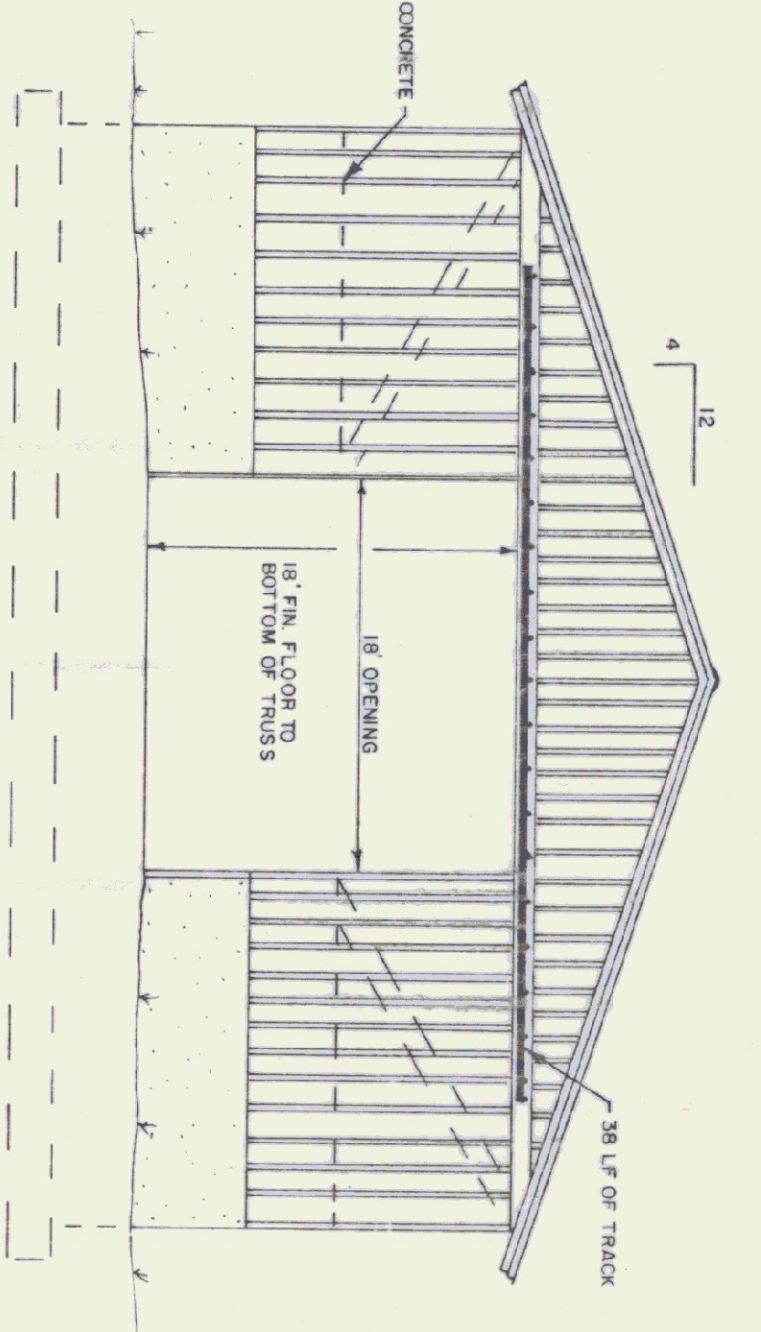
NOTE:
EXACT BUILDING LOCATION AND FLOOR ELEVATION TO BE DETERMINED IN THE FIELD BY THE ENGINEER.



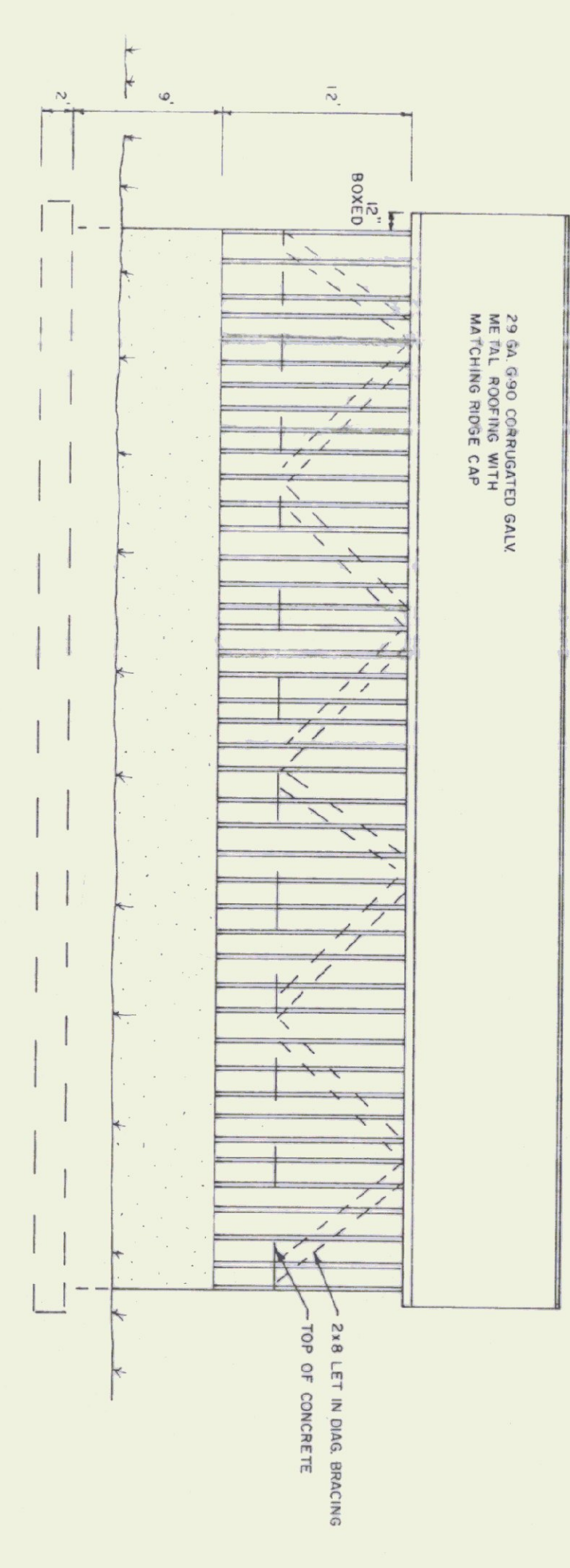
TRACK MOUNT DETAIL
N.T.S.



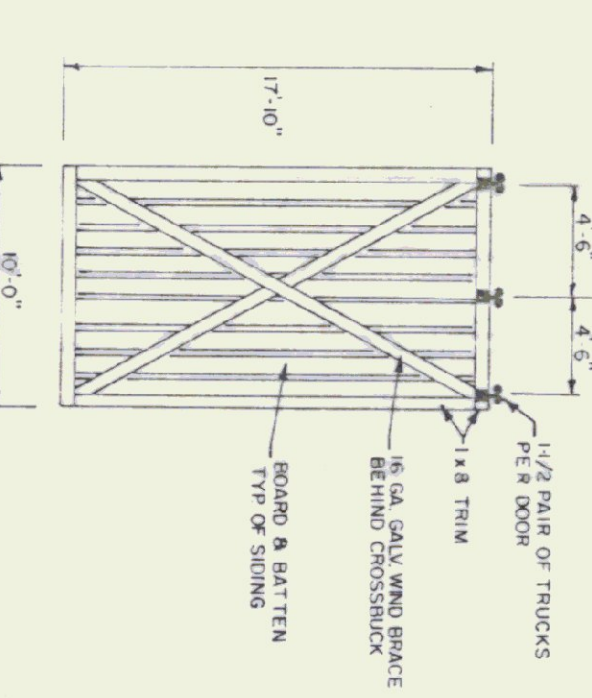
BACK ELEVATION
1/8\"/>



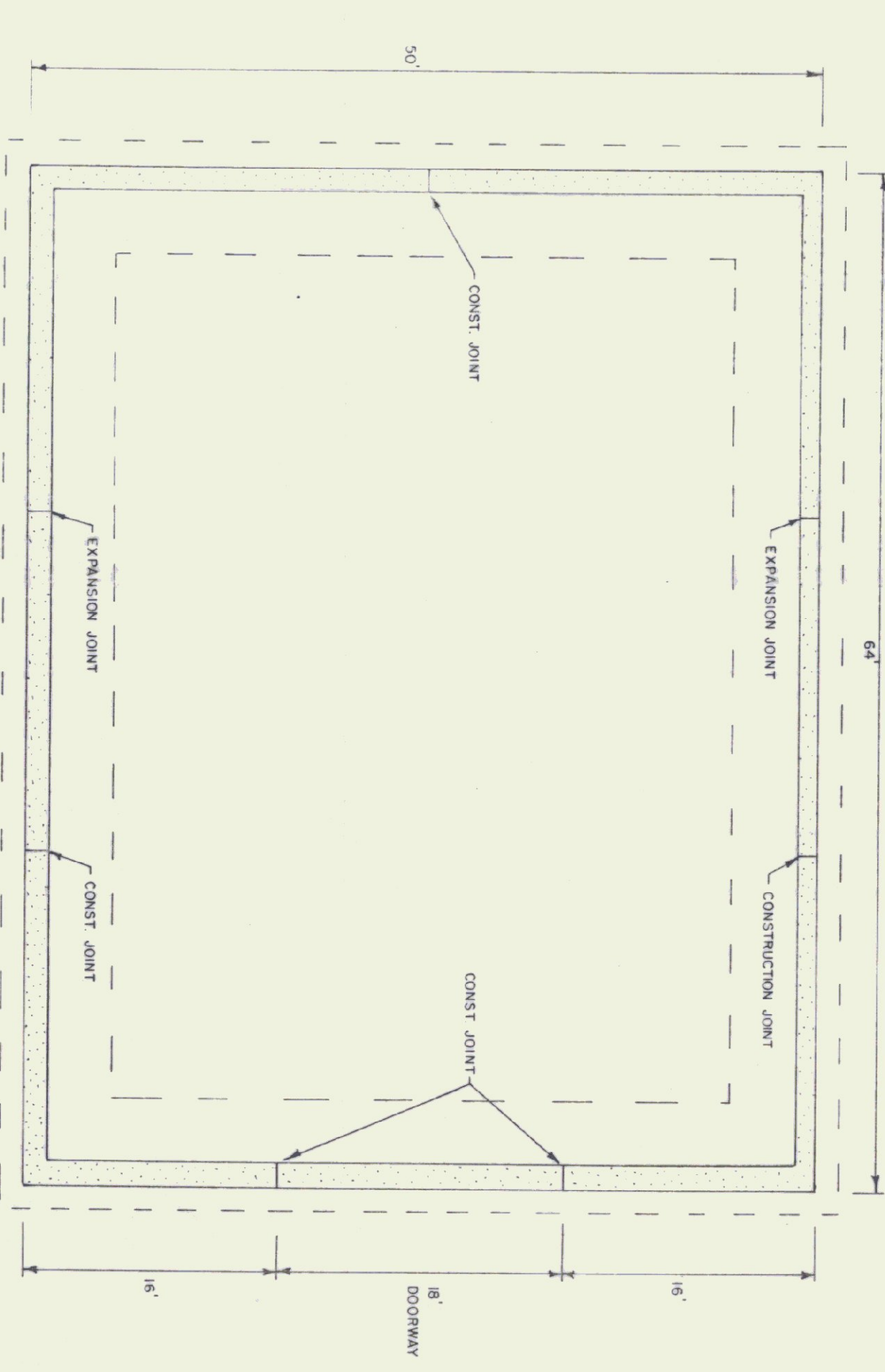
FRONT ELEVATION
1/8\"/>



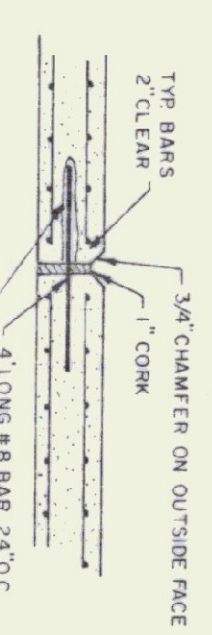
SIDE ELEVATION
1/8\"/>



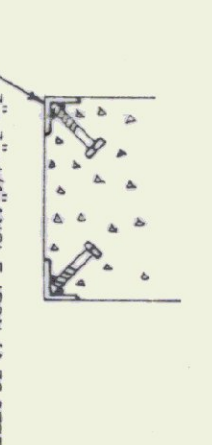
DOOR DETAIL
N.T.S.



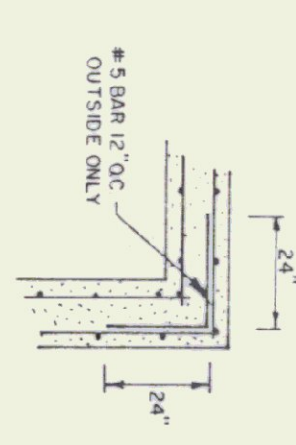
FOUNDATION PLAN
1/8\"/>



EXPANSION JOINT DETAIL
N.T.S.



CORNER GUARD
N.T.S.



CORNER DETAIL
N.T.S.

STATE OF VERMONT		DEPARTMENT OF STATE BUILDINGS	
MIDDLESEX MAINTENANCE FACILITY		MIDDLESEX VERMONT	
50' x 64'		SALT/SAND SHED	
MONTPELIER, VERMONT		MIDDLESEX VERMONT	
DATE: SEPT 5, 1991	SCALE: AS NOTED	REVISIONS:	DWG NO.
DRAWN BY: S.K. JANANWICZ	APPROVED BY: [Signature]		1 OF 1