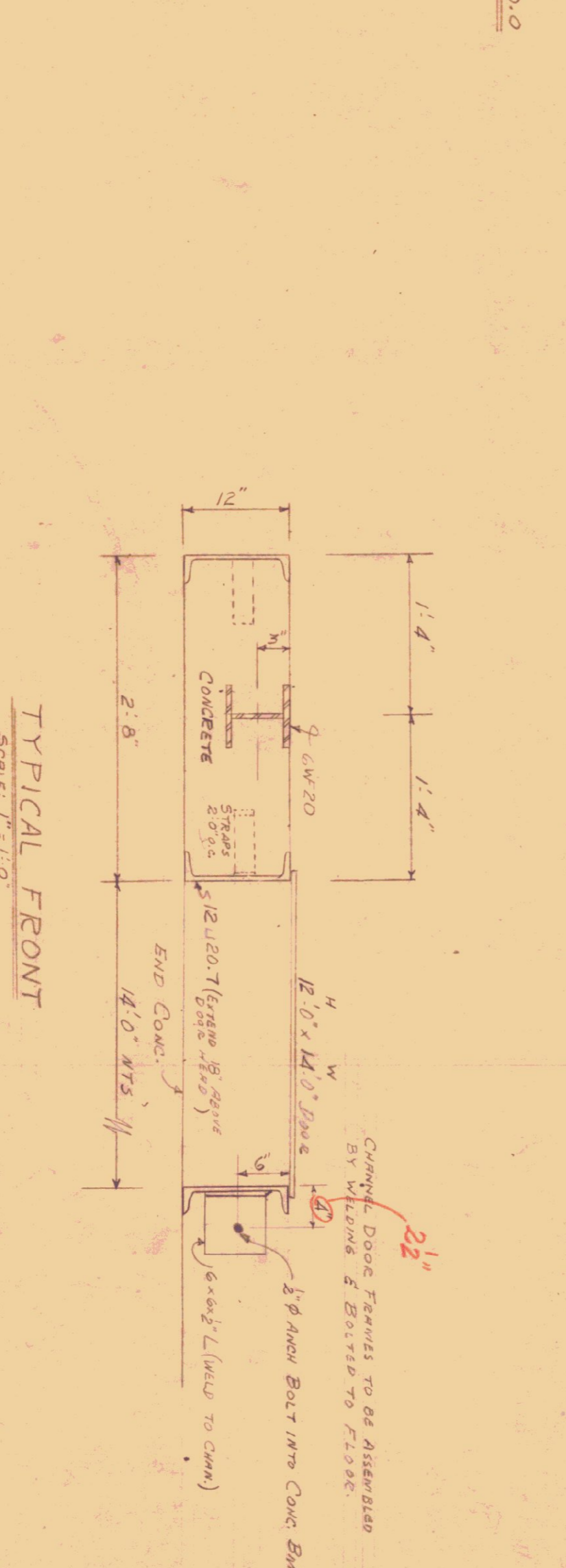
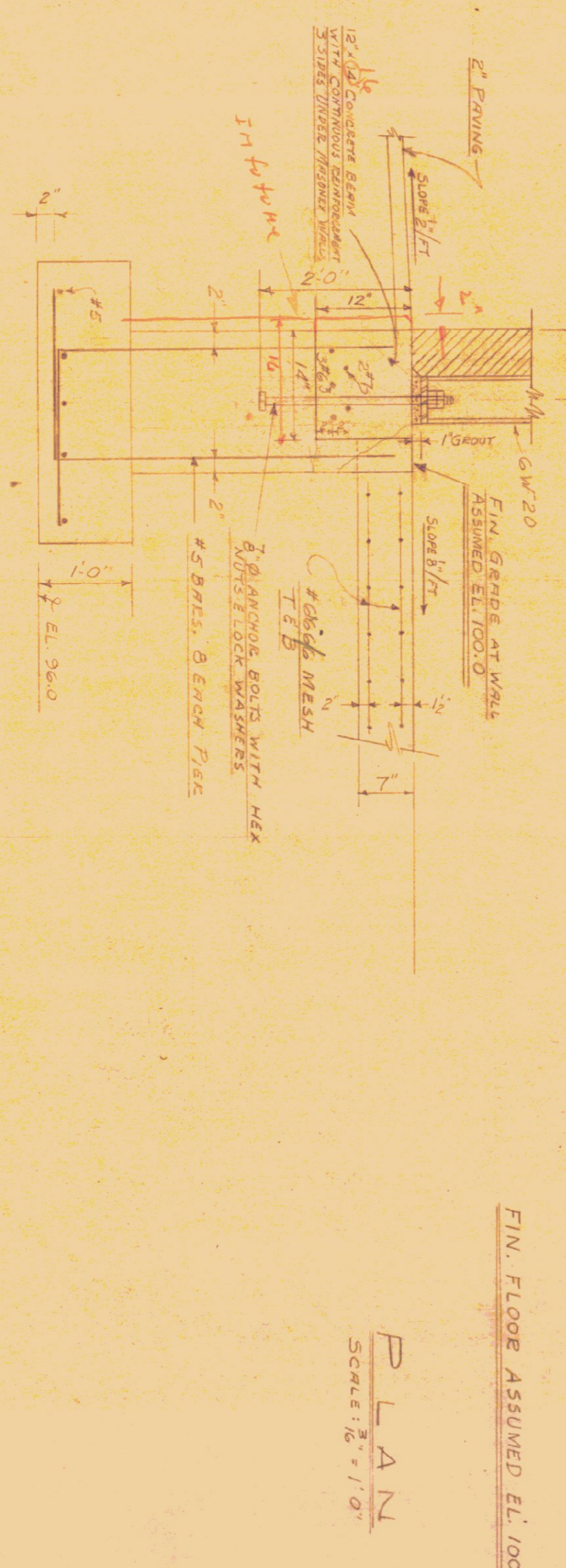
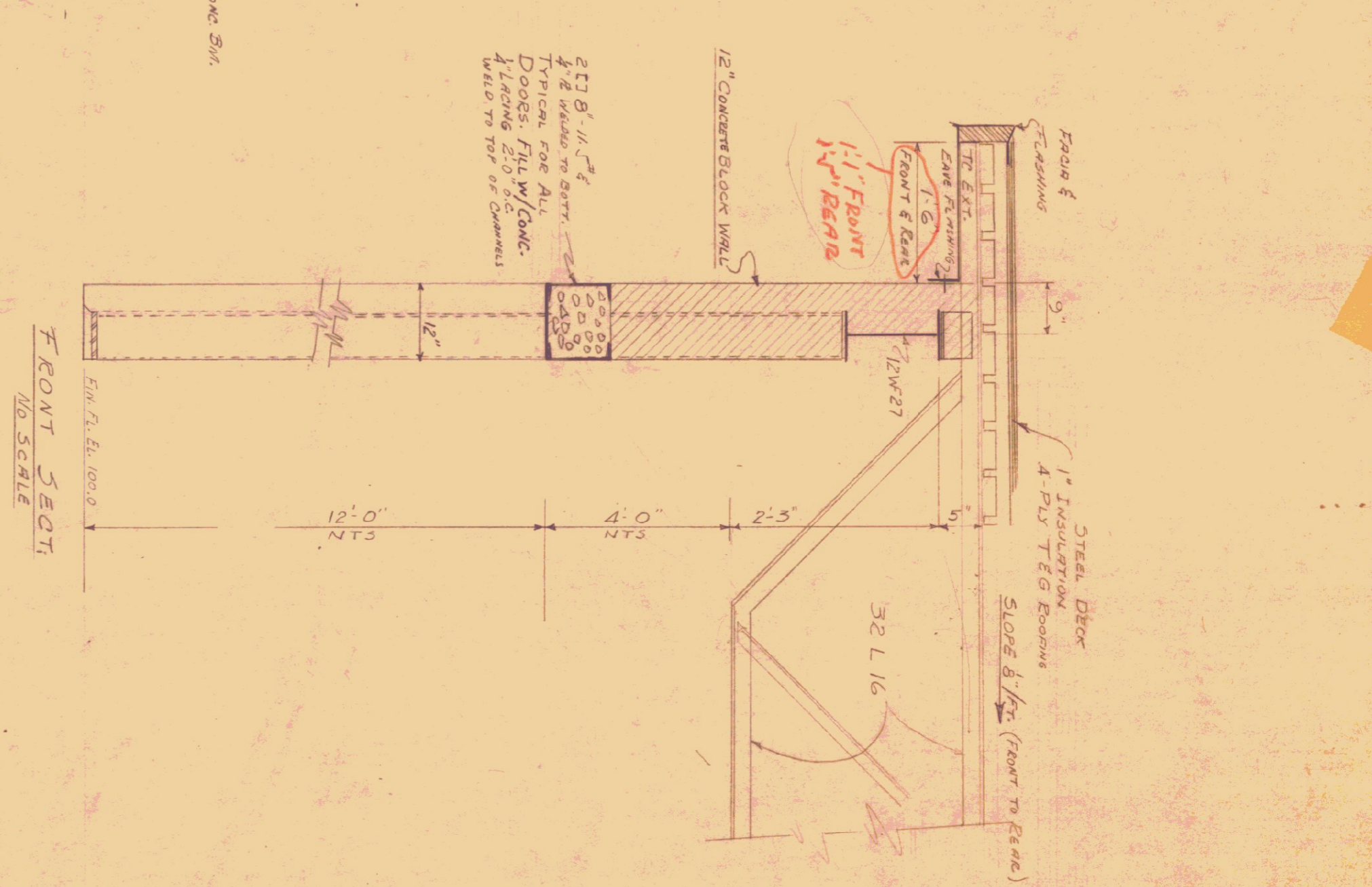
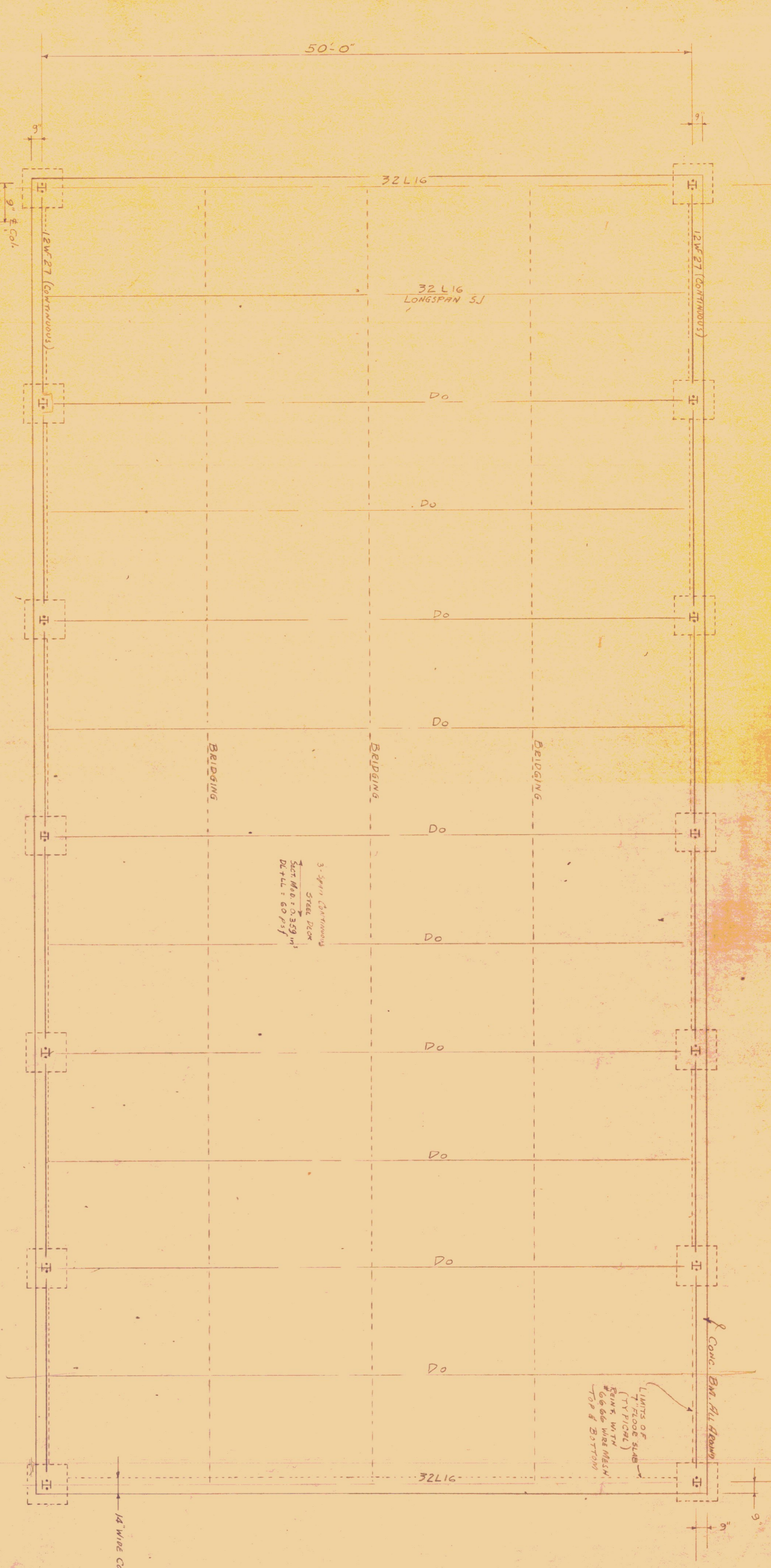


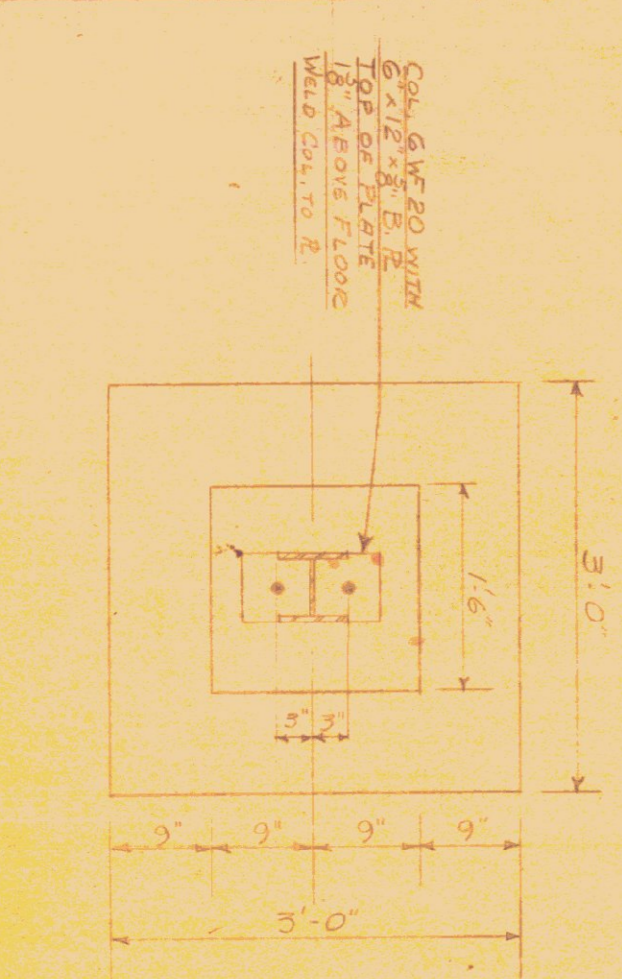
6 SPACINGS @ 16" 8" = 100'-0"



FOUNDATIONS STEEL

4 #7 @ 5'-0"	EW BM.	5'-25"	5'
6 #6 @ 1'-5'-0"			
6 #6 @ 1'-5'-0"			
6 #7 @ 2'-5'-0"			
6 #7 @ 2'-5'-0"			
16 #7 @ 2'-1'-0"	Side BM's	2'-24"	2'-24"
24 #6 @ 2'-1'-0"			
4 #7 @ 2'-1'-0"			
6 #6 @ 2'-1'-0"			

ALL LAPS 2'-0"



STRUCTURAL SHOP DRAWINGS ARE TO BE APPROVED BY THE ENGINEER BEFORE FABRICATION IS BEGUN.

STATE OF VERMONT
HIGHWAY DEPARTMENT
GARAGE FOR DISTRICT No. 9
MIDDLESEX
DESIGN BY: REINASCIO
October 1958

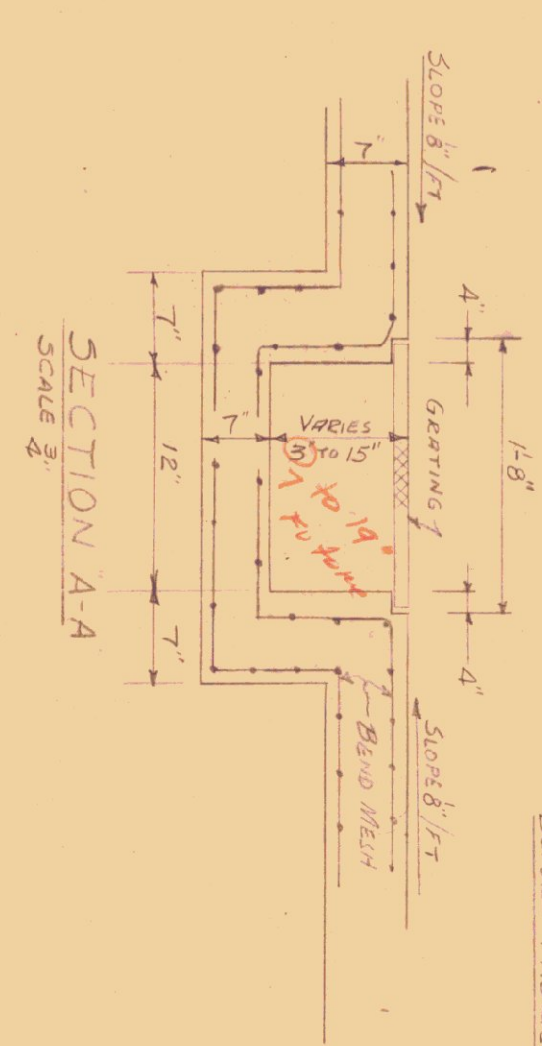
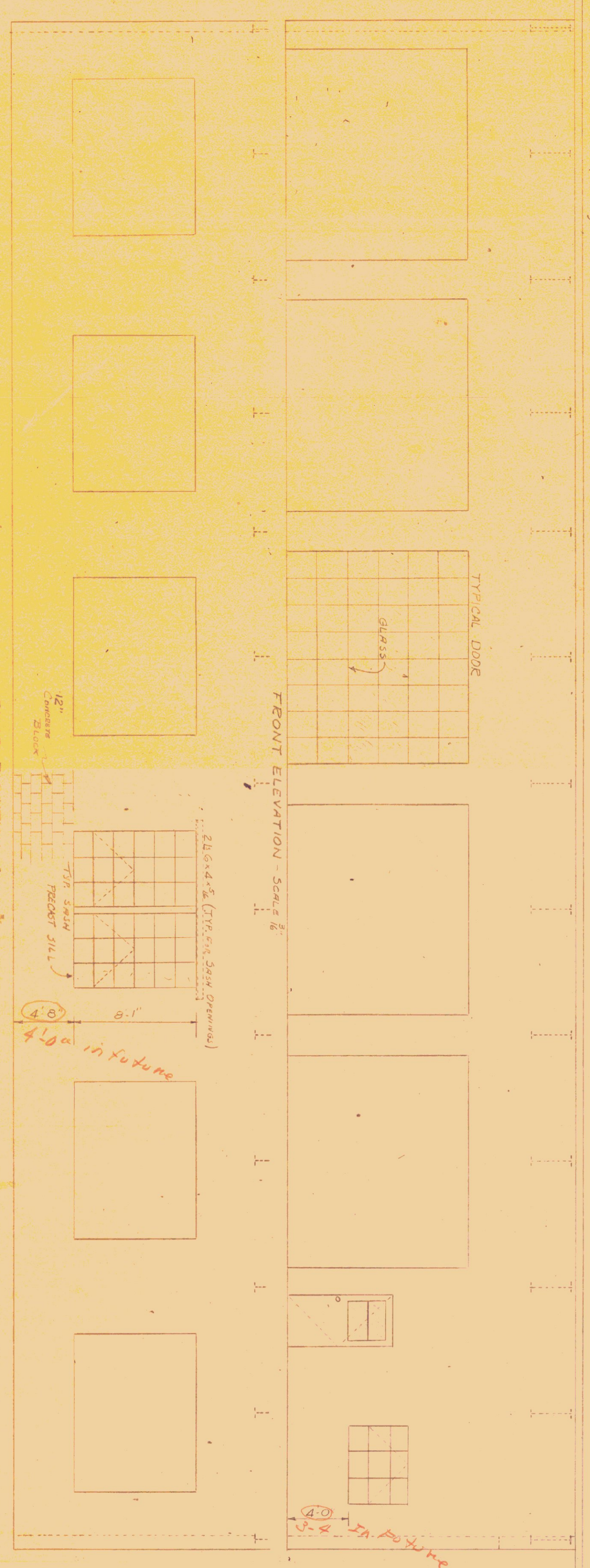
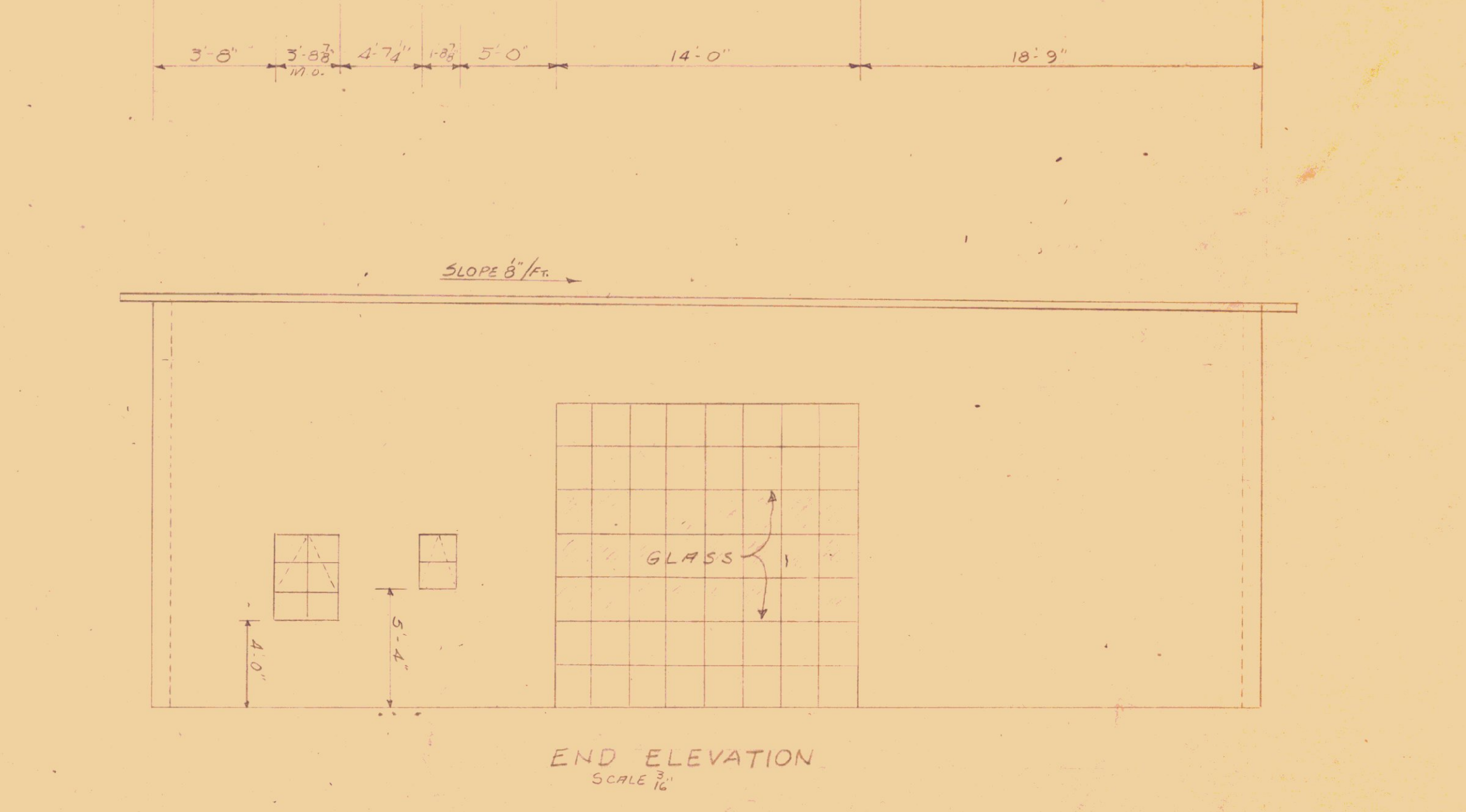
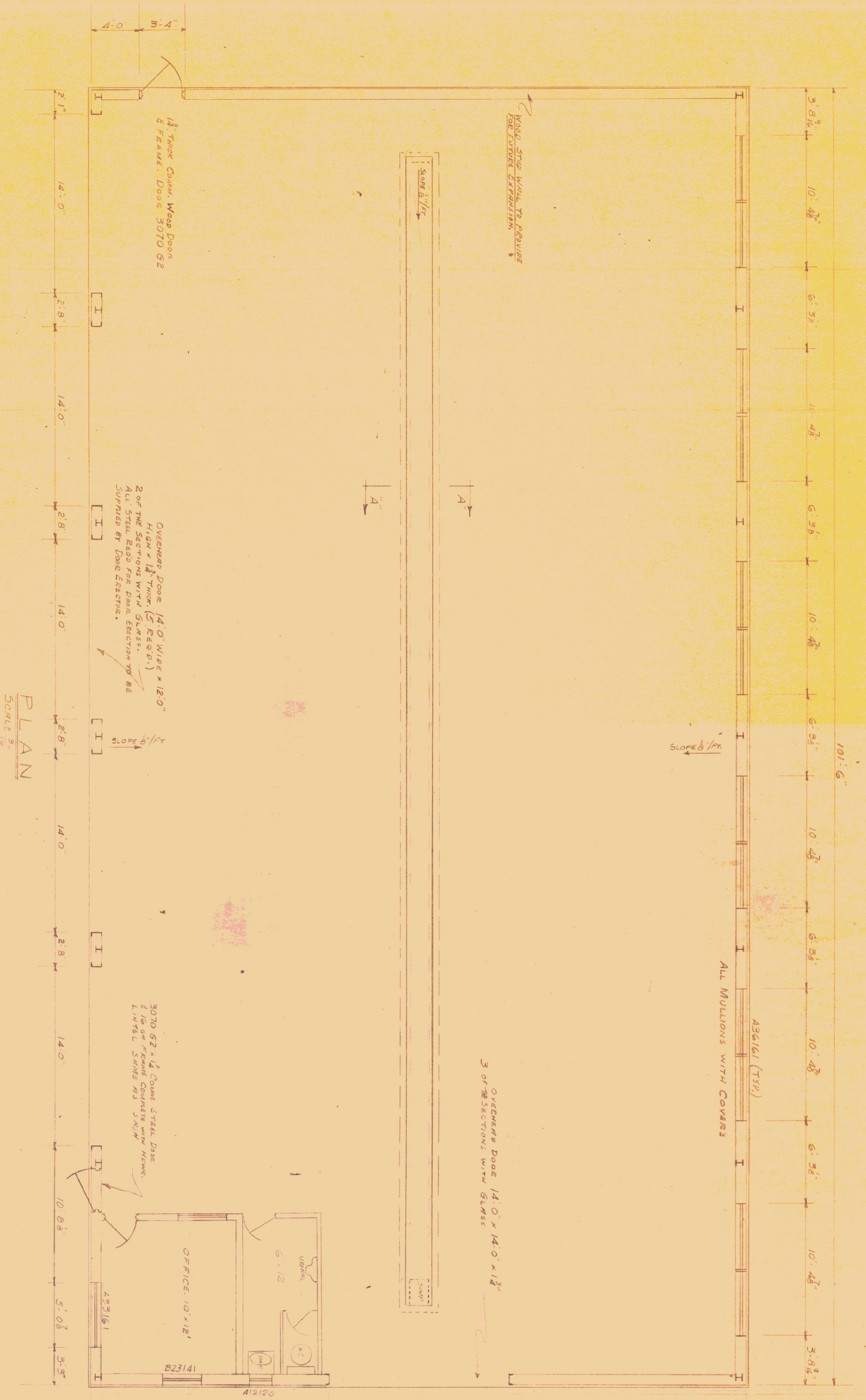
RECORD SET

M

110

Rev. Jan. 13, 1958

34.1



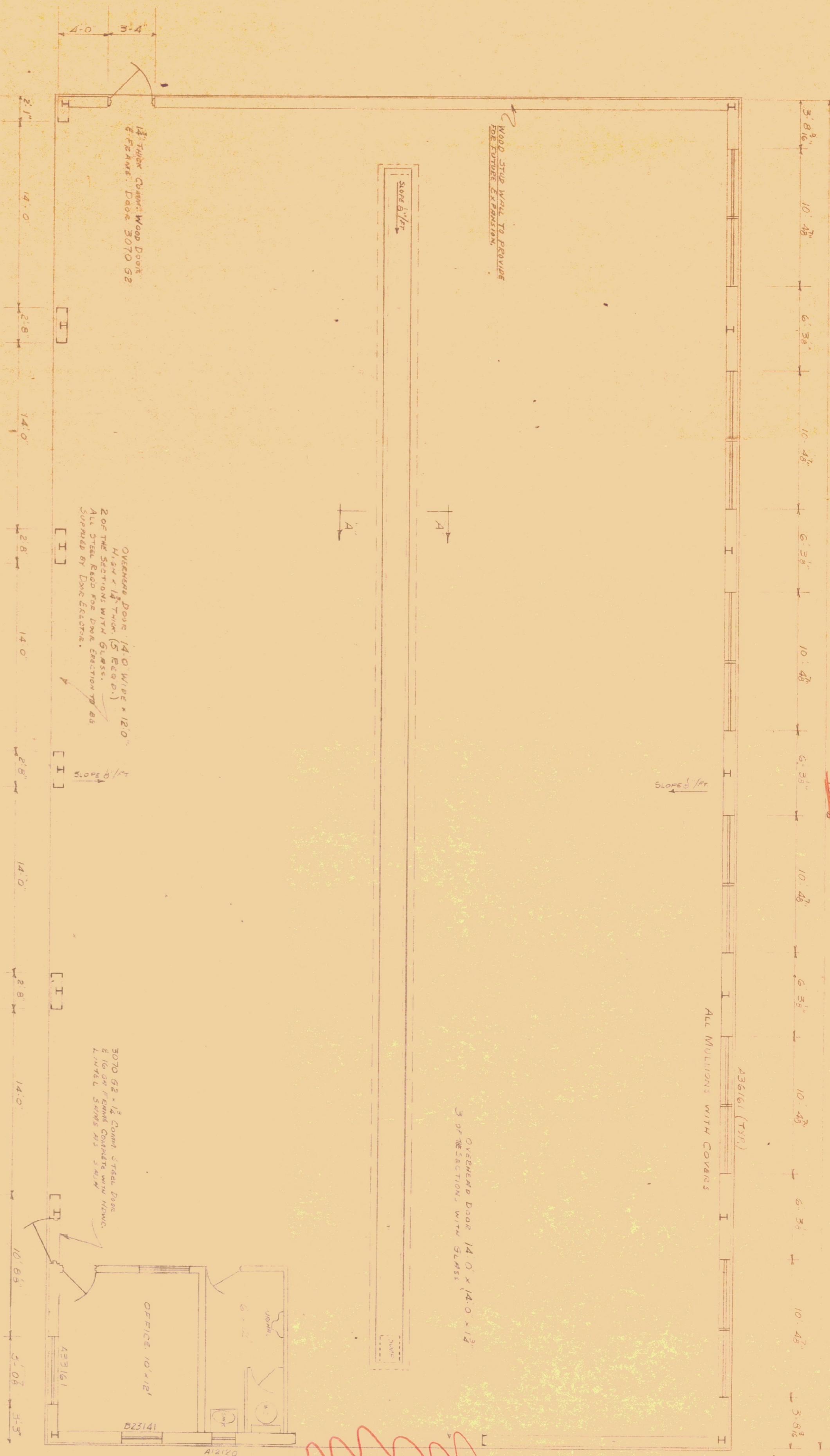
NOTE: DRAWINGS ARE TO BE SUBMITTED FOR APPROVAL BEFORE FABRICATION IS BEGUN

Record Set

STATE OF VERMONT
 HIGHWAY DEPARTMENT
 GARAGE FOR DISTRICT NO. 9
 U.S. ROUTE 2
 MIDDLESEX

DESIGN BY: RENASCO
 OCTOBER 1958

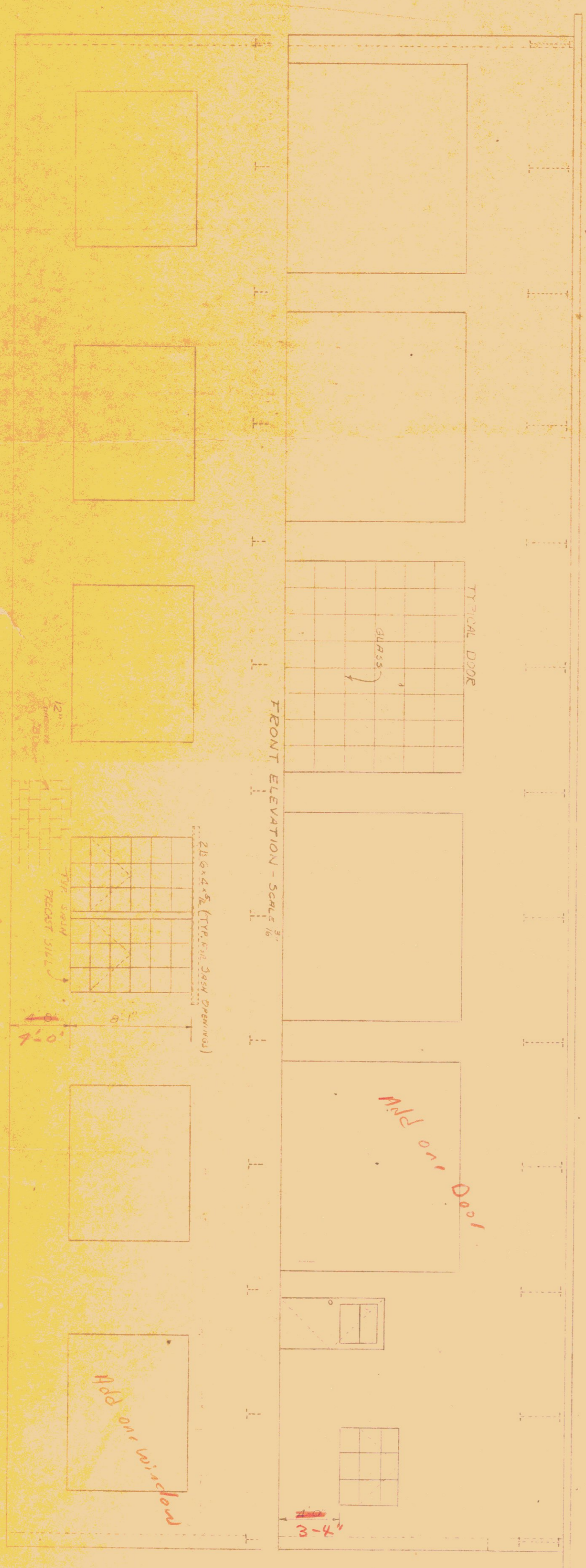
118-2" All 1 window B space



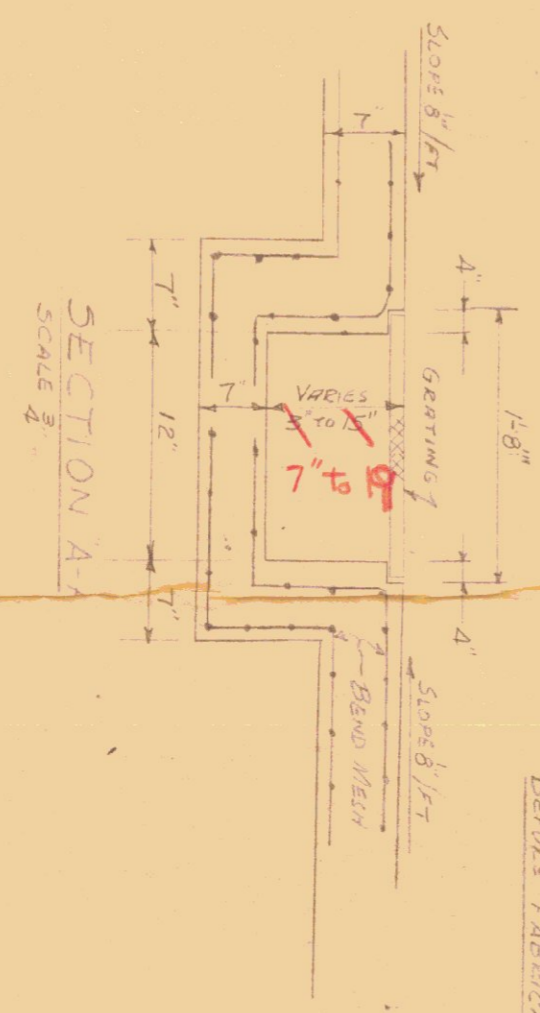
PLAN SCALE 1/8"



END ELEVATION SCALE 1/8"



FRONT ELEVATION SCALE 1/8"



SHORT DRAWINGS ARE TO BE SUBMITTED FOR APPROVAL BEFORE FABRICATION IS BEGUN

STATE OF VERMONT
HIGHWAY DEPARTMENT
GARAGE FOR DISTRICT NO. 9
U.S. ROUTE 2
MIDDLESEX
DESIGN BY E. F. MANASSO
OCTOBER 1938

