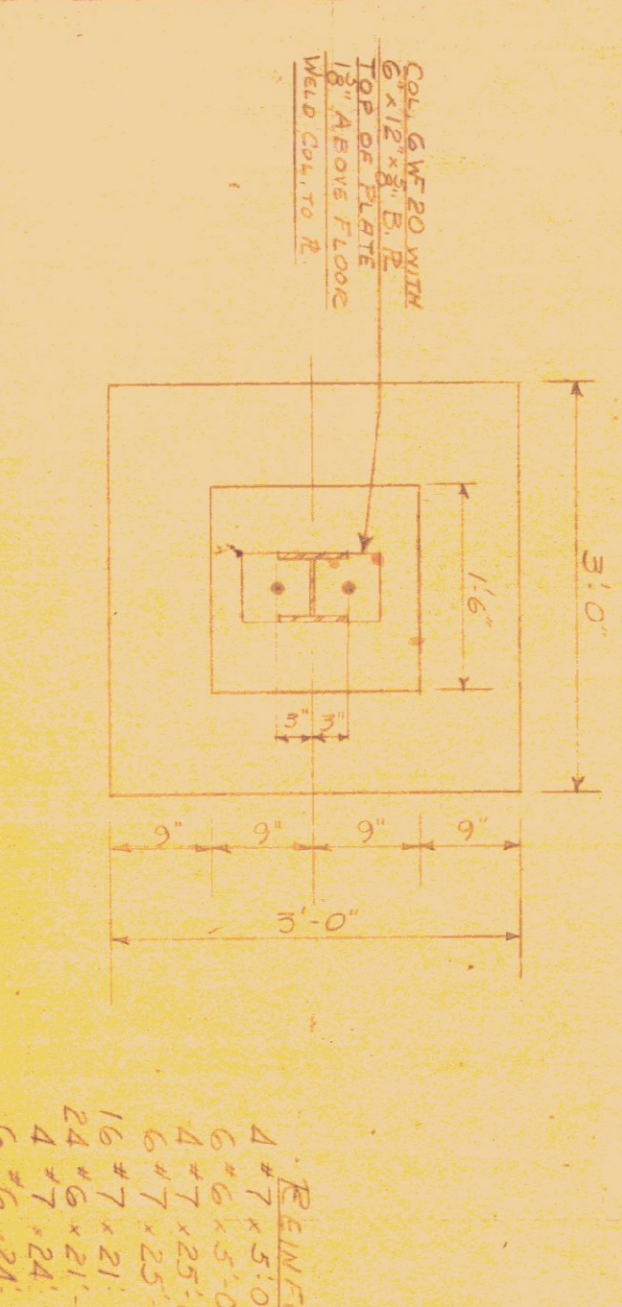
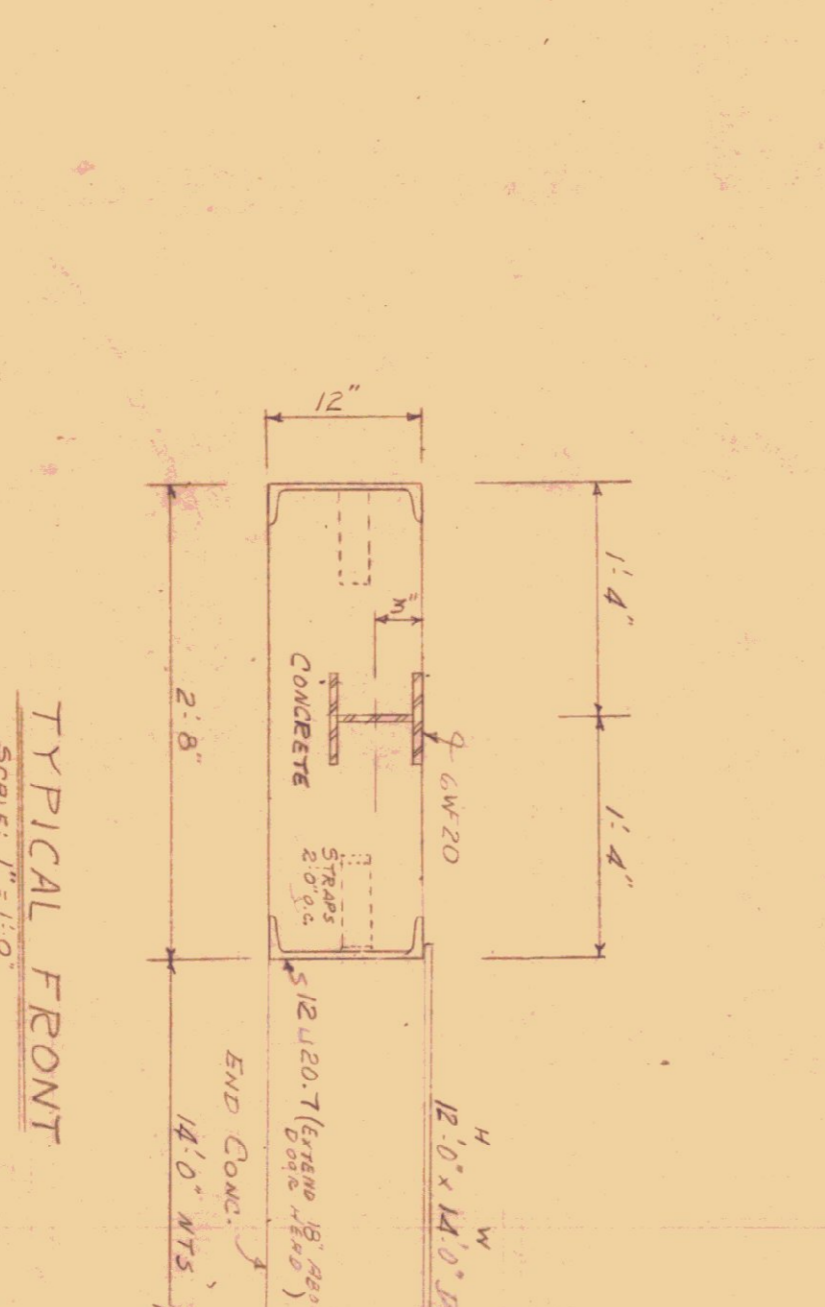
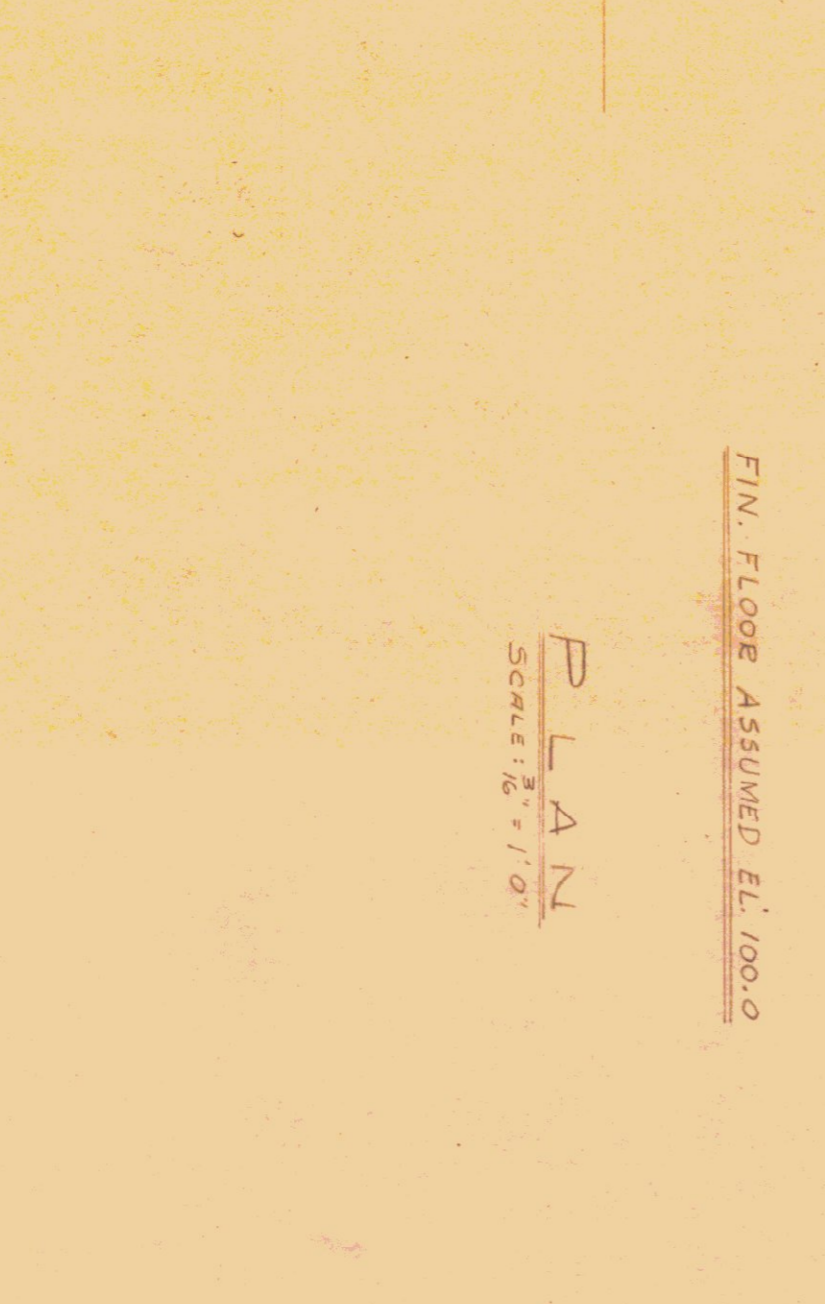
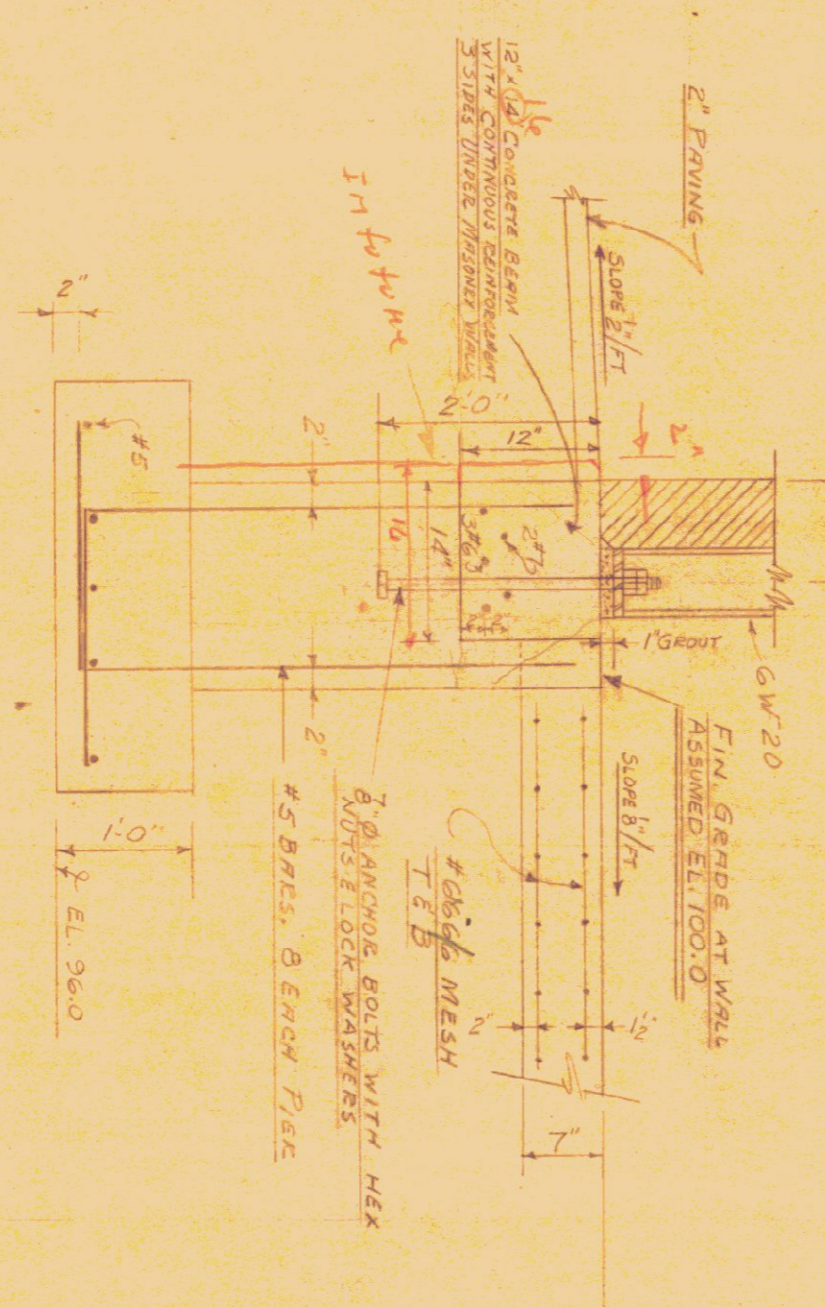
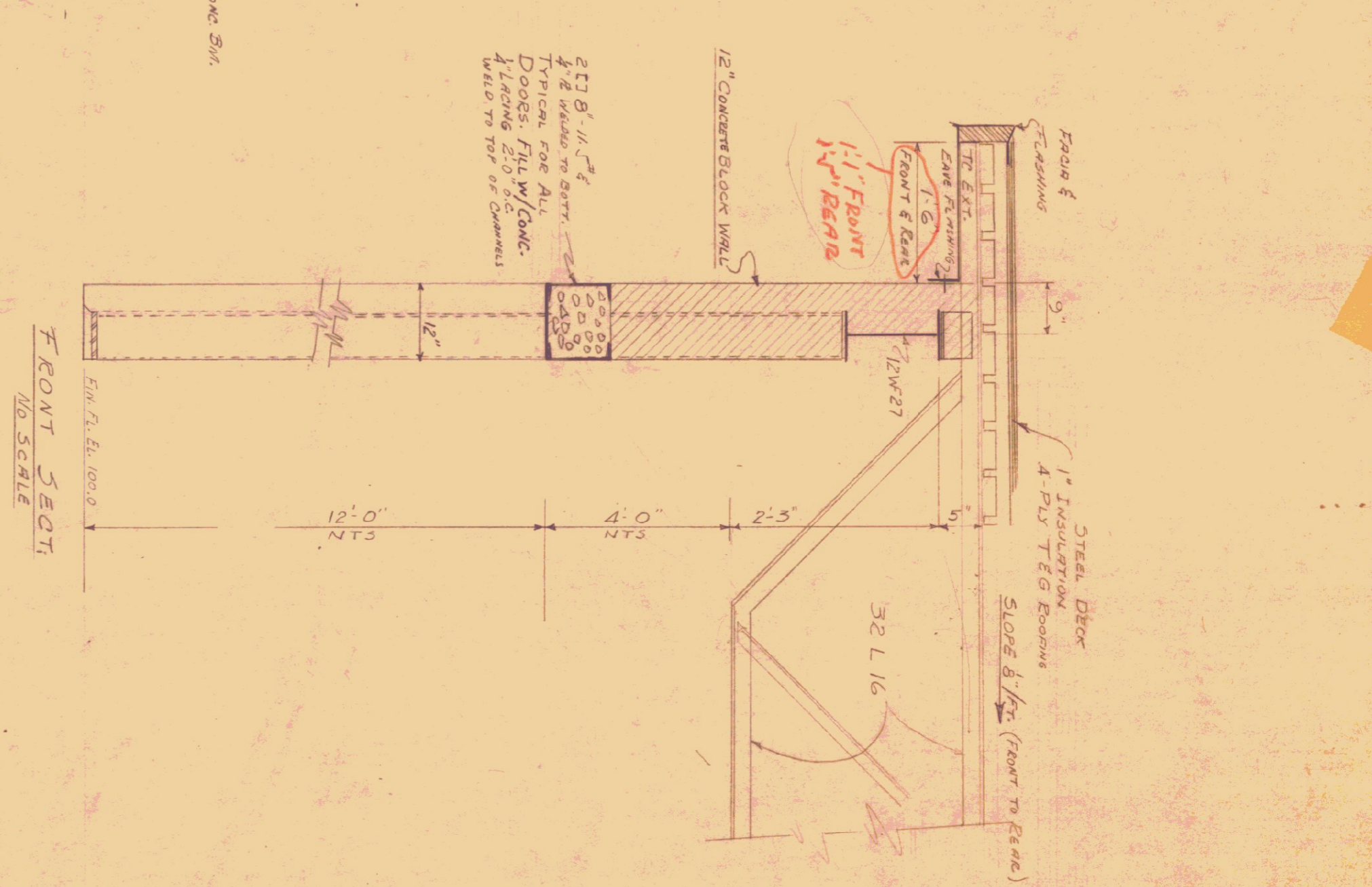
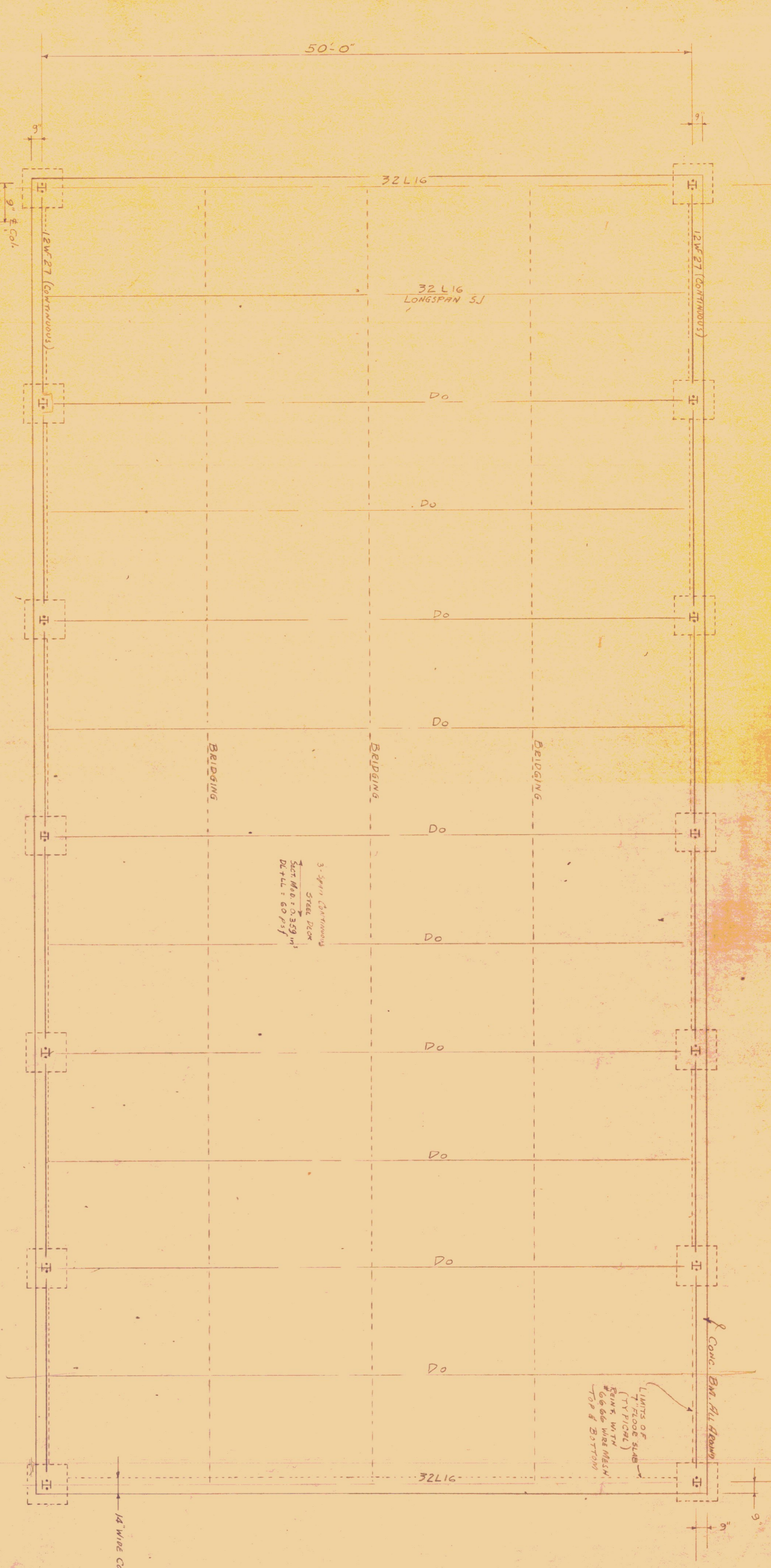


6 SPACINGS @ 16" 8" = 100'-0"



FOUNDATIONS STEEL

4 #7 @ 5'-0"	EW BM.	5'-25"	5'
6 #6 @ 5'-0"	EW BM.	5'-25"	5'
6 #7 @ 25'-0"	EW BM.	5'-25"	5'
6 #7 @ 25'-0"	EW BM.	5'-25"	5'
16 #7 @ 21'-0"	Side BM.	16'-24"	21'-24"
24 #6 @ 21'-0"	Side BM.	16'-24"	21'-24"
4 #7 @ 24'-0"	Side BM.	16'-24"	21'-24"
6 #6 @ 24'-0"	Side BM.	16'-24"	21'-24"

ALL LAPS 2'-0"

RECORD SET

STATE OF VERMONT
HIGHWAY DEPARTMENT
GARAGE FOR DISTRICT NO. 9
U.S. ROUTE 2
MIDDLESEX
DESIGN BY: REINASCIO
OCTOBER 1958

STRUCTURAL SHOP DRAWINGS ARE TO BE APPROVED BY THE ENGINEER BEFORE FABRICATION IS BEGUN.

110

34.1