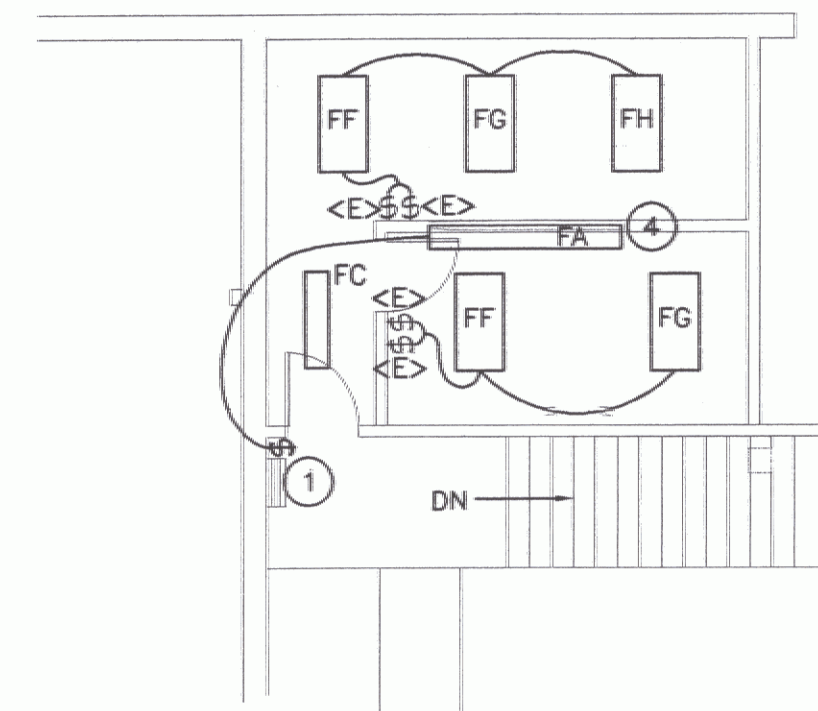
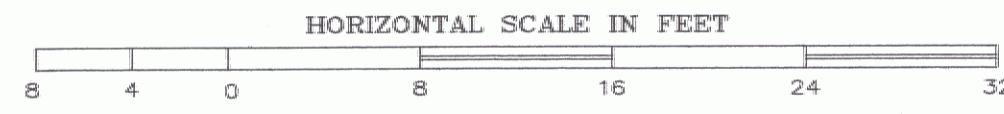


NOTE: ALL FIXTURES AND LAMPS ARE PROVIDED BY OWNER. CONTRACTOR SHALL NOT PURCHASE FIXTURES

NEW LIGHTING PLAN (2ND FLOOR)

SCALE: 1/8" = 1'-0"

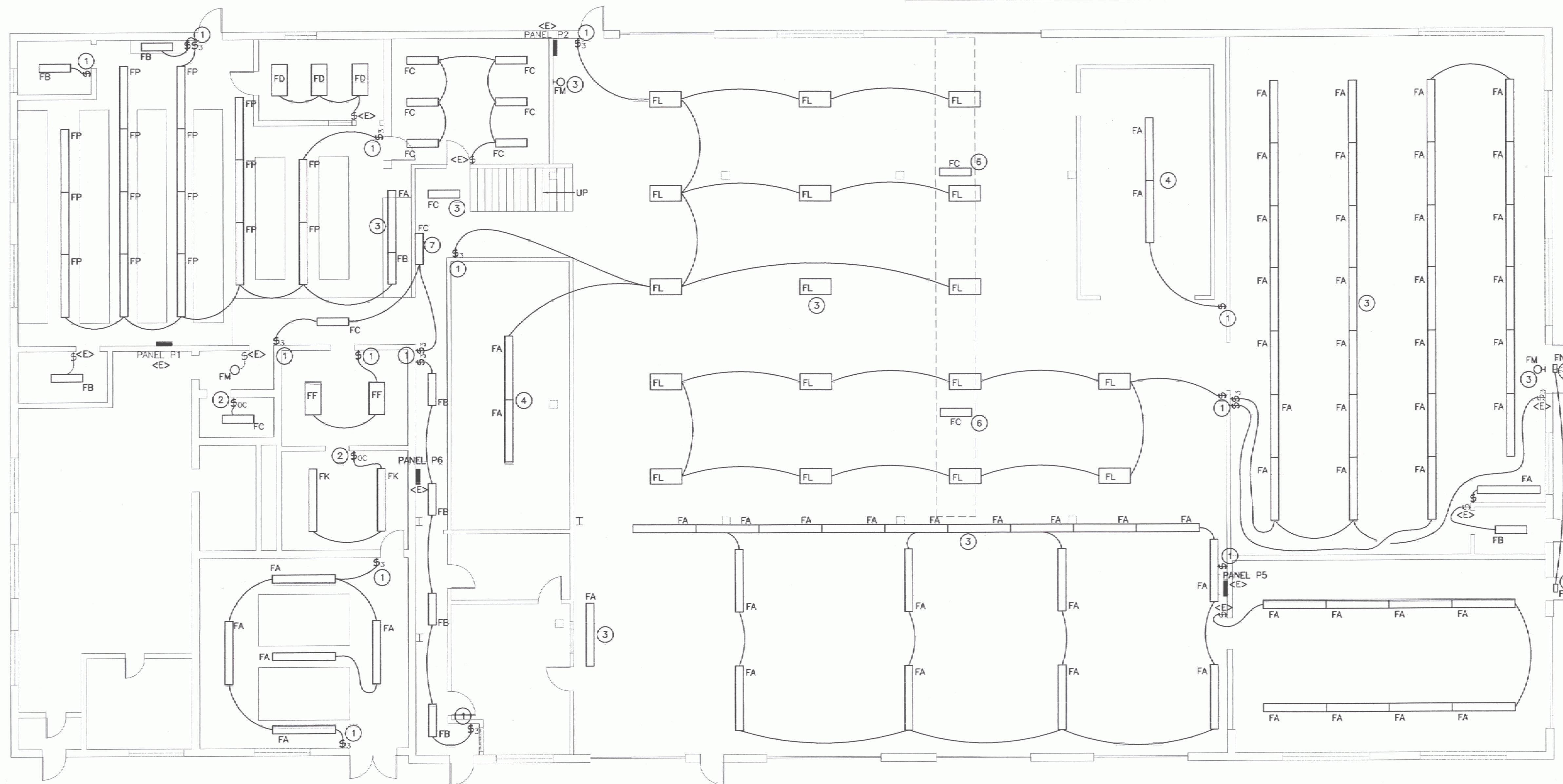


LIGHTING FIXTURE SCHEDULE

TYPE	MANUFACTURER & MODEL NO.	MOUNTING	LAMPS	VOLTS	REMARKS
FA	COLUMBIA KL-8-232-EB8-120-KHC-KL-WG-SUPER-T8	CHAIN-HUNG	(4) F032T8 CR185	120	"SUPER T-8" LAMPS & BALLAST
FB	COLUMBIA KL-4-232-EB8-120-KHC-KLWG-SUPERT8	CHAIN-HUNG	(2) F032T8 CR185	120	"SUPER T-8" LAMPS & BALLAST
FC	COLUMBIA AWN-4-232-EB8-120-SUPERT8	SURFACE	(2) F032T8 CR185	120	"SUPER T-8" LAMPS & BALLAST
FD	COLUMBIA SM-24-232-FS-PC1-EB8-120-SUPERT8	SURFACE	(2) F032T8 CR185	120	"SUPER T-8" LAMPS & BALLAST
FF, FG, FH	COLUMBIA SM-24-332-FS-PC1-EB8-120-SUPERT8	SURFACE	(3) F032T8 CR185	120	"SUPER T-8" LAMPS & BALLAST, DUAL BALLASTS FOR DUAL-LEVEL LIGHTING
FK	COLUMBIA LUN-8-232-EB8-210-SUPERT8	SURFACE	(4) F032T8 CR185	120	"SUPER T-8" LAMPS & BALLAST
FL	COLUMBIA LHR-4-632-M4R-ST-3EB8-120-F4C10-SUPERT8	SURFACE	(6) F032T8 CR185	120	"SUPER T-8" LAMPS & BALLAST
FM	PRESCOLITE 9424-13 HPF	SURFACE, WALL MOUNTED	(1) 13W TT	120	
FN	RUUD E4405-D-BS-120P	SURFACE	50W MH	120	WITH PHOTOCELL
FP	COLUMBIA CSR-8-132-EB8-120-SLR-SUPERT8	CHAIN-HUNG	(1) F032T8 CR185	120	"SUPER T-8" LAMPS & BALLAST

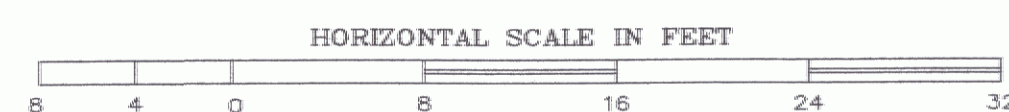
KEYED NOTES:

- 1 NEW SWITCH LOCATION, CONNECT TO EXISTING LIGHTING CIRCUIT. PROVIDE NEW WIRING FROM PANEL.
- 2 PROVIDE NEW OCCUPANCY SENSOR TO REPLACE EXISTING SWITCH.
- 3 THIS FIXTURE IS UNSWITCHED (ALWAYS ON).
- 4 THESE FIXTURES SHALL BE MOUNTED 12" FROM CEILING.
- 5 REPLACE EXISTING FIXTURES WITH NEW. WIRING SHALL REMAIN.
- 6 REPLACE EXISTING FIXTURES ON CRANE WITH NEW AS SHOWN, WIRING SHALL REMAIN.
- 7 WALL MOUNT THIS FIXTURE.

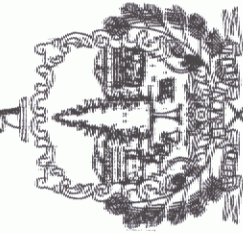


NEW LIGHTING PLAN

SCALE: 1/8" = 1'-0"



STATE OF VERMONT
Department of Buildings
and General Services
Agency of Administration
Montpelier, Vermont



Pearson & Associates
MECHANICAL & ELECTRICAL ENGINEERS
P.O. BOX 610 STOWE, VERMONT 05672
TEL. (802) 253-9607 FAX. (802) 253-9290
EMAIL: pearson@stowe.net

253-9607

STATE OF VERMONT
DEPARTMENT OF TRANSPORTATION
CENTRAL GARAGE, BERLIN
LIGHTING UPGRADE

REVISIONS
SCALE: AS NOTED
DATE: MARCH 2006
DRAWN BY: ASG
APPR. BY: EEP

AOT
CENTRAL GARAGE
BERLIN

NEW LIGHTING
PLAN
BERLIN